

QUALITY

Winnebago RVs are designed and built around you, with superior craftsmanship, advanced manufacturing technologies and steel-focused construction to enhance safety and reliability.

INNOVATION

From groundbreaking RVs to game-changing features to the spacious floorplans made possible by our SmartSpace™ design, our heritage is unrivaled for continuous industry firsts in vehicle technology and design.

SERVICE

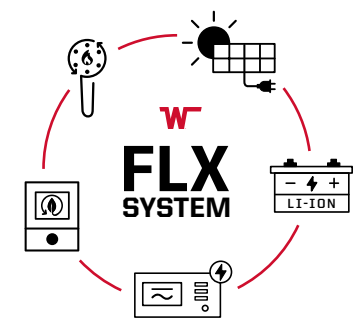
Our carefully chosen dealers are supported by factory training and our advanced parts supply system, while owners benefit from excellent real-world customer support as well as 24/7 access to online technical information.





Make Yourself at Home – Anywhere.

5 integrated technologies allow you to go off the grid for up to 5 days without a generator or external hook-ups.



FLX System Energy Components

To keep you powered up off-grid, two roof-mounted 200-watt Go Power!® solar panels charge the 320-amp-hour Lithionics® lithium-ion battery via the 30-amp MPPT charge controller, while the Xantrex™ 3,000-watt XC Pro pure sine wave inverter provides clean 110-volt AC current when you need it.



FLX System Climate and Water Components

The ultra-efficient Truma® AquaGo® water heater, VarioHeat™ furnace and Aventa air conditioner are all managed by a single intuitive controller. The Showermiser water reclamation system extends your water supply by recycling the freshwater normally wasted while heating up your shower water.



Outdoor Living

In camp, the power tongue jack and power stabilization jacks make setup and leveling easy. Deploy the powered patio awning with LED lighting and play your favorite playlist through the JBL® premium exterior speakers. A convenient camp-side spray port makes it easy to wash the day's dust off before calling it a night.



Standard Features

The Micro Minnie FLX comes with a long list of standard features, including a 2" accessory receiver hitch, fully enclosed holding tanks equipped with 12-volt pad heaters and an interior switch, Goodyear® Wrangler 15" off-road tires with aluminum wheel assemblies, Wi-Fi prep, USB charge ports, and a wireless cellphone charger.



Floorplan Shown: 2100BH



Comfortable Retreat From the Day's Adventures.

Expansive Space

Five available slideout-equipped floorplans provide plenty of living and storage space, and sleep up to five.

Flexible Furnishings

Stick with the standard dinette, which converts to a comfortable sleeping space, or upgrade to the EZ Glide Sofa Sleeper with hutch and table. Some models may be equipped with a Murphy bed that converts to a sofa for daytime use.



Full Galley

Enjoy your favorite meals anywhere you camp. The full galley includes a 3-burner cooktop, microwave-convection oven, and a large refrigerator that runs directly off the battery for added efficiency.

Choice Entertainment

When it's time to relax, fire up the Smart TV or set the mood with the JBL Aura Cube entertainment center with JBL premium speakers.

Complete Bath

Off the grid doesn't have to mean roughing it. All Micro Minnie FLX floorplans include a dry bath with full shower and stand-alone toilet.





WINNEBAGO

MICRO MINNIE FLX / Specifications

WEIGHTS & MEASURES	2100BH	2108DS	2108FBS	2108TB	2306BHS
Exterior Length	21'11"	22'5"	22'5"	22'5"	25'5"
Exterior Height ¹	10'3"	10'3"	10'3"	10'3"	10'3"
Exterior Width ²	7'	7'	7'	7'	7'
Awning Length	13'	15'	15'	15'	15'
Interior Height	6'4"	6'4"	6'4"	6'4"	6'4"
Freshwater Tank Capacity ³ (gal.)	31	31	31	31	31
Water Heater Capacity (gal.)	Tankless	Tankless	Tankless	Tankless	Tankless
Holding Tank Capacity - Black ³ (gal.)	25	25	25	25	25
Holding Tank Capacity - Gray 1 ³ (gal.)	25	25	25	25	25
Holding Tank Capacity - Gray 2 ³ (gal.)	N/A	N/A	N/A	N/A	N/A
LP Capacity ⁴ (lbs.)	40	40	40	40	40
GVWR (lbs.)	5,500	5,500	5,500	5,500	6,000
Axles (lbs.)	2 @ 3,000	2 @ 3,000	2 @ 3,000	2 @ 3,000	2 @ 4,000
Dry Weight (lbs.)	4,177	4,364	4,275	4,330	4,781
Furnace (BTU)	11,500	11,500	11,500	11,500	11,500
Dry Hitch Weight (lbs.)	486	404	472	462	678
Hitch Height	28"	28"	28"	28"	28"
Tire Size	235/75R15C	235/75R15C	235/75R15C	235/75R15C	235/75R15C
Sleeps ⁵	5	3	3	3	5

Interior

JBL Aura Cube high performance mechless media center with parametric lighting
 JBL premium sound interior speakers
 Full-overlay European style cabinetry
 Flip-up counter

OPTIONAL
 EZ Glide Sofa Sleeper with Hutch & Table

Galley

1.1 cubic ft. convection microwave
 10.3 cubic ft. 12-volt refrigerator
 Recessed 3 burner cooktop with backlit knobs and glass cover
 Undermount stainless steel dual bowl sink with cover

Bath

Full shower with skylight
 Roof vent

Bedroom

Versatile sleeping arrangements
 Sleeps up to 5 adults depending on the floorplan

Exterior

NXG engineered frame
 1.5" thick FILON® MAX fiberglass sidewalls with Azdel Onboard® composite panels
 Goodyear Wrangler 15" radial tires (Not applicable on 1700BH)
 Aluminum wheel assemblies
 Dexter® TORFLEX® torsion stub axles
 Powered patio awning with LED lighting
 All LED lighting with reverse lights integrated into brake lights

Power tongue jack
 Power stabilization jacks
 Fully enclosed underbelly with radiant foil insulation
 12-volt tank pad heaters with interior switch
 One-piece TPO roof membrane
 Roof ladder
 Fully walkable roof
 Gel-coat fiberglass front cap
 2" accessory receiver
 7-way plug holder
 Campside spray port
 JBL premium sound exterior speakers
 Rearview backup camera prep

Heating & Cooling System

Truma® VarioHeat™ furnace 11,500 BTU
 Truma low-profile Aventa A/C 13,500 BTU
 20 lb. LP tank

Electrical System

(2) 200-watt solar panel with 30-amp MPPT charge controller
 Side mount solar prep for additional panel
 Xantrex™ control panel
 Go Power! control panel
 Truma® control panel
 Winnebago all-in-one control panel
 320-amp-hour Lithium-ion battery
 3,000-watt pure sine wave inverter
 12-volt tank pad heaters with interior switch
 USB/ USB-C charge ports
 Wi-Fi Prep integrated into King® Omni Antenna
 Wireless cellphone charger
 Tire Pressure Monitoring System Prep

Plumbing System

Truma® AquaGo® water heater
 Showermiser freshwater reclamation system
 31-gallon freshwater tank
 25-gallon black tank
 25-gallon gray tank

Warranty

See your dealer for complete warranty information.

FOOTNOTES

- The height of each model is measured to the top of the tallest standard feature and is based on the curb weight of a typically equipped unit. The actual height of our vehicle may vary by several inches depending on chassis or equipment variations. Please contact your dealer for further information.
- Floorplans feature a wide-body design - over 96-inches. In making your purchase decision, you should be aware that some states restrict access on some or all state roads to 96-inches in body width. Before making your purchase decision, you should confirm the road usage laws in the states of interest to you.
- Capacities are based on measurements prior to tank installation. Slight capacity variations can result due to installation applications.
- Capacities shown are tank manufacturer's listed water capacity (W.C.). Actual filled LP capacity is 80% of listing due to overfilling prevention device on tank.
- Sleeping capacity is the maximum based on a specific floorplan.

Because features, specification, equipment, and options may vary from those highlighted on this website, the buyer is responsible for confirming with the dealer the features, specifications, equipment, and options included in their specific vehicle.

In addition, Winnebago's program of continuous product improvement may result in changes to vehicle specifications, equipment, model availability, and price without notice.

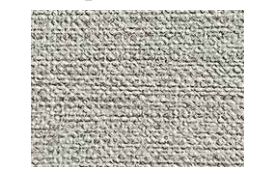
EXTERIOR



White

DECOR

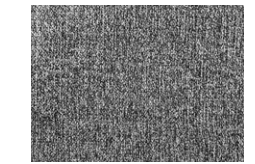
Paragon



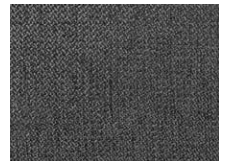
Fabric



Accent



Bedspread



Bedroom Curtain



Wall Board



Accent



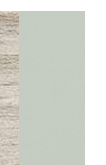
Countertop



Flooring

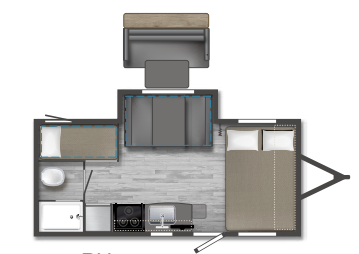


Cabinetry



Accent

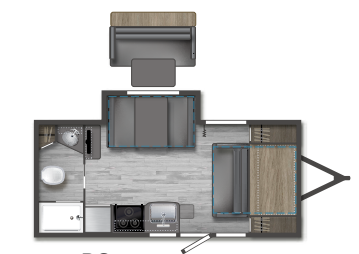
FLOORPLANS



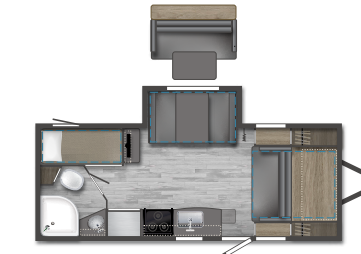
2100BH



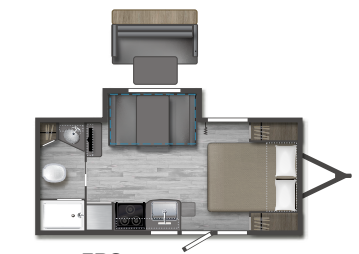
2108TB



2108DS



2306BHS



2108FBS

Dotted lines denote overhead storage area. Blue dashed lines denote sleeping areas. Floorplans are representations only and are subject to change. Please contact a certified Winnebago dealer for more information.