

Viva la Vita.



VITA

QUALITY INNOVATION SERVICE

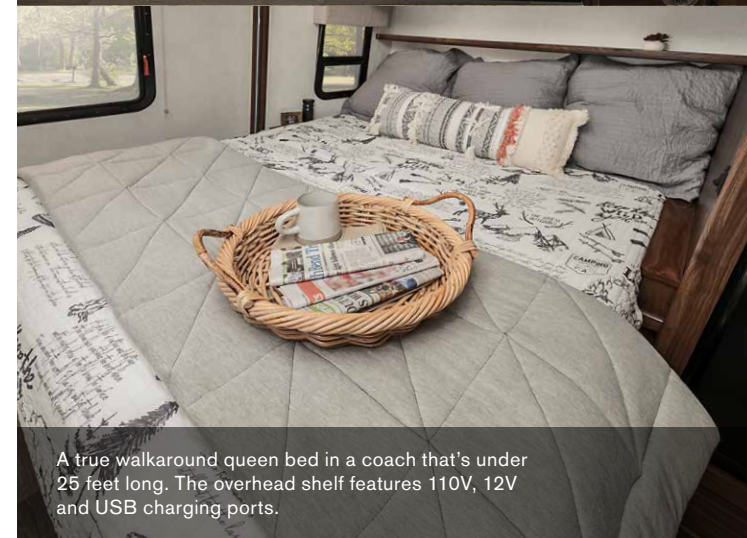
WINNEBAGO



24P Compass with Luxury Liner and Walnut cabinetry
Featured on the cover: Harbor Full-Body Paint



Enjoy your favorite meals wherever you go. The attractive Vita galley has everything you need to prepare delicious meals, and features plenty of storage for food, cookware and utensils.



A true walkaround queen bed in a coach that's under 25 feet long. The overhead shelf features 110V, 12V and USB charging ports.



The road is yours. In addition to comfortable swivel cab seats, the Vita features a full suite of the most current Mercedes-Benz safety features.

Easy driving meets easy living.

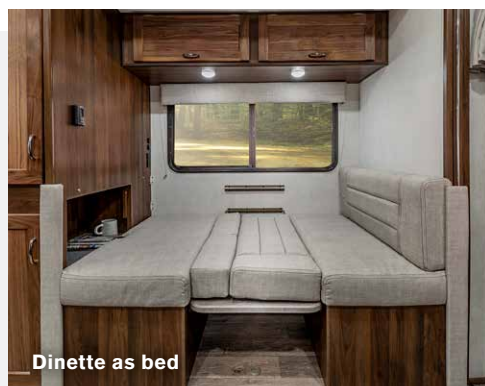
A modern update to the versatile Class C motorhome, the Winnebago® Vita® lets you pack a lot of living into its compact, easy-driving footprint.

The Vita combines the power, fuel economy and safety features of the Mercedes-Benz® Sprinter chassis with Winnebago's relentless focus on quality and innovation. With the largest carrying capacity, galley, holding tank capacity, and even bed length (24F) in its class, the Vita makes an ideal travel companion for families of all types.

The 3.0L V6 turbo-diesel-powered Vita comes equipped with the latest Mercedes-Benz safety features, two 100-watt solar panels, a Cummins Onan® MicroQuiet™ generator and 1,000-watt pure sine wave inverter, as well as available dual reclining theater seating with center console and removable pedestal table that help you viva la Vita!



With its large galley window, 32" HDTV, and the added room provided by the driver's-side slideout, the Vita's lounge is the perfect place to unwind after an active day. Comfortable swivel cab seats provide additional seating, while the available theater seating makes movie nights even more special. Our exclusive roof access wiring port makes it easy to run wiring for your own added equipment. And 110V, 12V and USB charging ports in the lounge and overhead bunk area keep devices charged and the action going.



Dinette as bed



110V, 12V,
USB charging port



Swivel cab seats



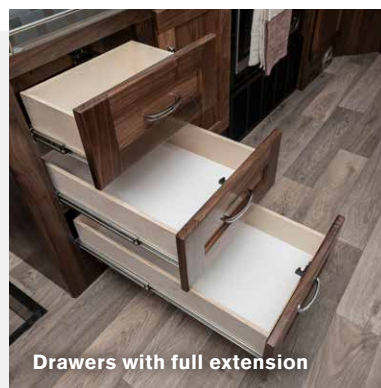
Dinette



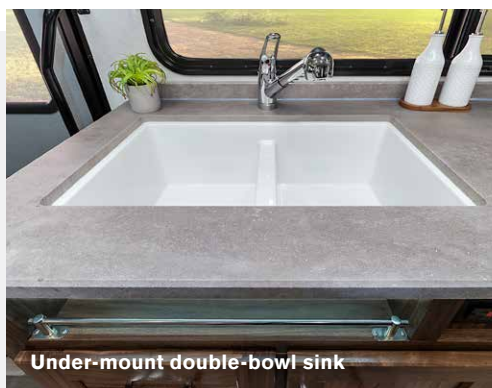
The Vita's well-equipped galley makes meal prep easy. The double-door residential refrigerator/freezer offers 7.3 cu. ft. of capacity, while the three-burner LP cooktop is augmented by the touch-control microwave convection oven, located below the cook-top for easier access. Storage is abundant, with multi-use storage/wardrobe areas, dinette storage (that can be utilized as nightstand or to extend the sleeping space), a lighted spice rack, and more.



Microwave/convection oven



Drawers with full extension



Under-mount double-bowl sink



Double-door refrigerator



Multi-use storage



The two Vita floorplans provide terrific options for sleep: the 80" bed in the 24F is the longest in its class, while the 24P features a true walkaround queen bed with nightstands and 110V, 12V and USB charging ports. The bi-fold door (24P) provides extra room in the bath, and eases access with the slideout in. Up front, the overhead bunk is quiet and comfortable, thanks to our SuperShell™ construction. Each bath features a shower with skylight, retractable self-cleaning shower door, medicine cabinet, linen cabinet (24F), robe hooks and powered roof vent.



Overhead bunk



Queen bed



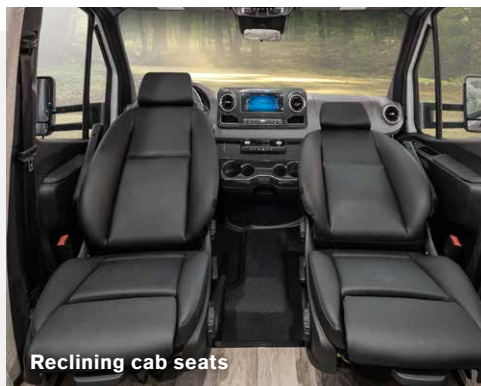
Bathroom



Shower with skylight



Settle in behind the Vita's multi-function steering wheel and take command, thanks to a full complement of Mercedes-Benz safety features. Among the highlights: Active Lane Keeping Assist detects lane departure, warns the driver and, if necessary, guides the vehicle back into the lane. Active Brake Assist can help avoid accidents with vehicles or pedestrians in front. The MBUX® infotainment center with navigation, voice interface, Wi-Fi hotspot and rear camera also aids driving and parking, and the fully adjustable, leatherette-covered cab seats provide superb support, and swivel to add seating to the lounge area in camp.



Reclining cab seats



Powered mirror



Dash storage



Infotainment center



In addition to its attractive graphics and full-body paint options, the Vita exterior features a host of amenities to make camp life even better. Automatic controls on the hydraulic front and rear leveling jacks make leveling your motorhome a snap. Efficient LEDs light the porch, powered patio awning and rear storage compartment, the screened entrance door lets the breeze in; there's even a pet loop attachment to keep your best friend in camp.



Rear exterior storage



Stainless steel wheel



Pet loop attachment



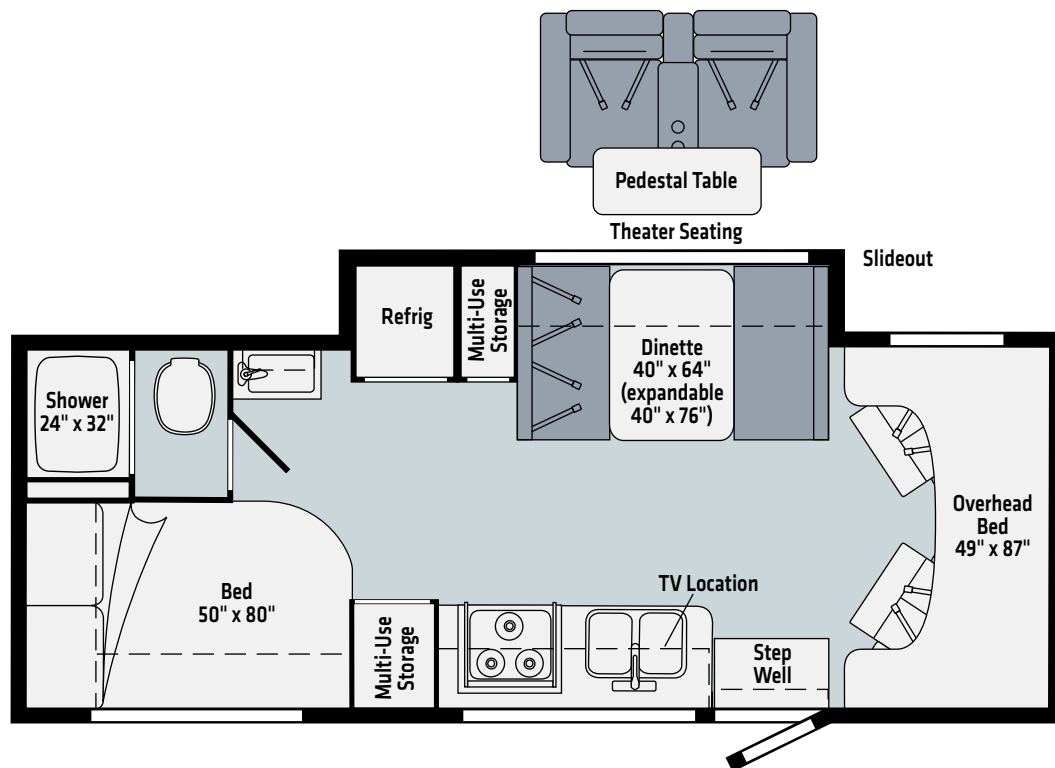
Entrance door



Screened entrance door

24F

Dealer Stock Only



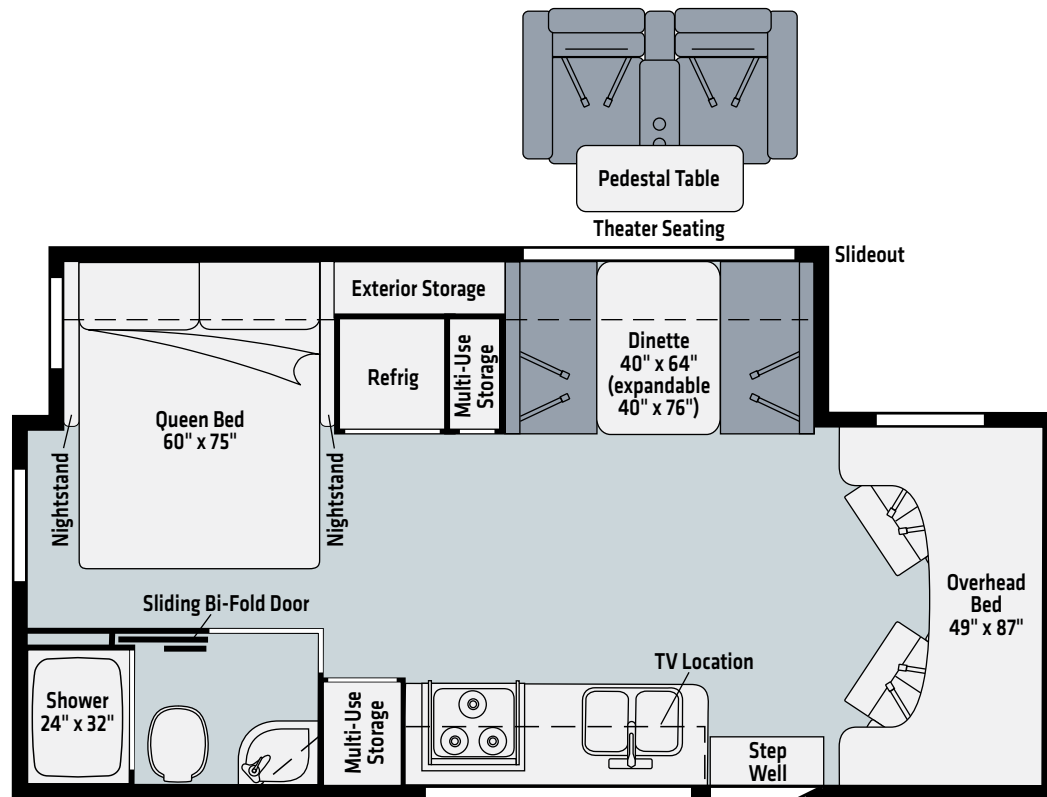
Luxury
Linen

Vinyl

Dashed lines denote overhead storage areas. Floorplans and specifications are also available online at Winnebago.com

24P

Dealer Stock Only



Luxury
Linen

Vinyl



Canyon Mist
DELUXE GRAPHICS



Pacific Mist
DELUXE GRAPHICS



Anthem
FULL-BODY PAINT



Spruce Mist
FULL-BODY PAINT



Harbor
FULL-BODY PAINT

Compass



Luxury Linen



Wall Board



Bed Cover



Countertop



Vinyl Flooring

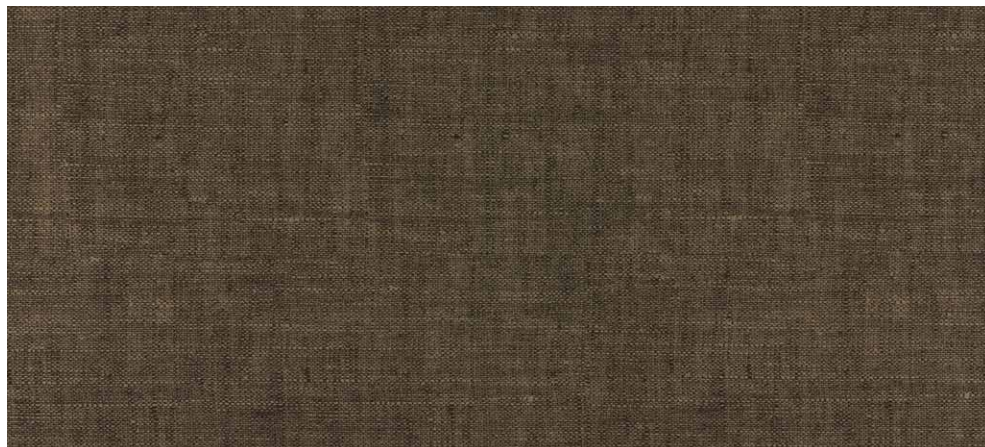
Wood



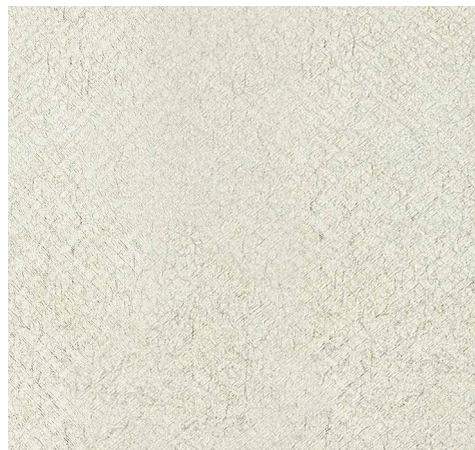
Walnut

Winnebago® reserves the right to change décor materials and specifications without notice or obligation.

Expedition



Luxury Linen



Wall Board



Bed Cover



Countertop



Vinyl Flooring

Wood



Weathered Teak

Winnebago® reserves the right to change décor materials and specifications without notice or obligation.

WEIGHTS & MEASURES	24F	24P
Length	24'5"	24'5"
Exterior Height ¹	11'7"	11'7"
Exterior Width	7'6"	7'6"
Exterior Storage ² (cu. ft.)	42	45
Awning Length	15'	15'
Interior Height	7'	7'
Interior Width	7'3"	7'3"
Freshwater Tank Capacity ³ (gal.)	37	37
Water Heater Capacity (gal.)	6	6
Holding Tank Capacity - Black/Gray ³ (gal.)	41/41	41/41
LP Capacity ⁴ (lbs.)	50.76	50.76
Fuel Capacity (gal.)	24.5	24.5
GCWR ⁵ (lbs.)	15,250	15,250
GVWR (lbs.)	11,030	11,030
GAWR - Front (lbs.)	4,410	4,410
GAWR - Rear (lbs.)	7,720	7,720
Wheelbase	170"	170"

Mercedes-Benz® Sprinter Chassis

3.0L 6-cylinder, 188-hp, turbo-diesel engine, 7G-Tronic transmission, 220-amp. alternator

Adaptive ESP® technology

LED headlights w/high beam assist

Hydraulic brakes w/ABS

Trailer hitch⁵ 5,000-lb. drawbar/500-lb. maximum vertical tongue weight w/7-pin connector

Stainless steel wheel liners

2-point electric stabilizing system

OPTIONAL EQUIPMENT

Hydraulic leveling jacks w/automatic controls (front and rear)

Cab Conveniences

MBUX® touchscreen multimedia infotainment center w/navigation, Wi-Fi hotspot, intelligent voice control and rear camera

Heated power control cab seats armrest, adjustable lumbar support, headrest, recline, swivel and manual swivel

Airbags driver and passenger

3-point seat belts

Climate control

Power door locks w/remote

Power windows

Power mirrors w/defrost and turn signals

DISTRONIC PLUS® (adaptive cruise control)

Power steering w/tilt wheel

Leather wrapped steering wheel

Active brake assist

Lane keeping assist

Hill start assist

Crosswind assist

Attention assist

Traffic sign assist

Rain sensor w/integrated wet wiper system

Sunvisors

12-volt/USB powerpoints

Folding privacy screens

2 cab seat lounge cushions

Interior

32" HDTV

LED lights

Systems monitor panel

Amplified digital HDTV antenna

Powered roof vent (front bunk)

Roof vent (galley)

Mini blinds (galley)

Pleated night shades

Tinted coach windows

Vinyl flooring throughout

Assist bar

USB charger

12V power outlets

OPTIONAL EQUIPMENT

Theater seating w/pedestal table

Galley

Thermoformed countertops and decorative backsplash

Microwave/convection oven

3-burner range w/cover

Double-door 7.3 cu. ft. residential refrigerator/freezer

Pantry w/adjustable shelves

Double sink w/cover

Roof vent

Lighted spice rack

Bath

Shower w/wall surround

Retractable, self-cleaning shower screen

Flexible showerhead

Shower skylight

Toilet w/hand flush

Powered roof vent

Towel bar (24P)

Tissue holder

Robe hook(s)

Medicine cabinet

Decorative backsplash (24F)

Sliding bathroom door (24P)

Linen cabinet (24F)

Bedroom

Corner bed w/foam mattress, mattress cover (24F)

Queen bed w/cabinet, foam mattress and mattress cover (24P)

Wardrobe w/metal clothes rod

Exterior

LED porch light w/interior switch

Front mud flaps

Powered patio awning w/LED lights

Lighted storage compartments

Ladder

Entrance screen door

Running board w/logo tread

Pet leash attachment

Heating & Cooling

13,500 BTU Coleman®-Mach® 10 Quiet air conditioner

20,000 BTU low-profile furnace

Electrical System

Exterior AC duplex
Exterior antenna jack
Battery disconnect system (coach)
Automatic dual-battery charge control
AC/DC load center, 55-amp. converter/charger
2 deep-cycle, Group 31 RV batteries
3,600-watt Cummins Onan® MicroQuiet™ LP generator
1,000-watt pure sine wave DC/AC inverter
(2) 100-watt solar panel/battery charger w/controller, junction box, and plug for additional portable solar panel
Cable TV input
30-amp. power cord
Portable satellite dish hookup
Roof port wiring access

OPTIONAL EQUIPMENT

3,200-watt Cummins Onan® Diesel generator

Plumbing System

Pressurized city water hookup
6-gal. LP water heater w/electric ignition
Permanent-mount LP Tank
On-demand water pump
LPG accessory connection (patio area)
Holding tank flushing system

Safety

LP, smoke, and carbon monoxide detectors
10 BC fire extinguisher
Ground fault interrupter
Child seat tether anchor
High-mount brake lamps
Daytime running lamps

Warranty⁶

12-month/15,000-mile basic limited warranty⁷
36-month/36,000-mile limited warranty on structure⁷
15-year warranty on PVC roofing system⁷

FOOTNOTES

1. The height of each model is measured to the top of the tallest standard feature and is based on the curb weight of a typically equipped unit. The actual height of your vehicle may vary by several inches depending on chassis or equipment variations. Please contact your dealer for further information.
2. The load capacity of your motorhome is designated by weight, not by volume, so you cannot necessarily use all available space when loading your motorhome.
3. Capacities are based on measurements prior to tank installation. Slight capacity variations can result due to installation applications.
4. Capacities shown are tank manufacturer's listed water capacity (W.C.). Actual filled LP capacity is 80% of listing due to overfilling prevention device on tank.
5. Actual towing capacity is dependent on your particular loading and towing circumstances which includes the GVWR, GAWR, and GCWR, as well as adequate trailer brakes. Please refer to the Operator's Manual of your vehicle for further towing information.
6. See separate chassis warranty.
7. See your dealer for complete warranty information.

NA Not Available

Not all items available in combination. See dealer for details.

Because features, specifications, equipment, and options may vary from those highlighted in this brochure, the buyer is responsible for confirming with the dealer the features, specifications, equipment, and options included in their specific vehicle. In addition, Winnebago's program of continuous product improvement may result in changes to vehicle specifications, equipment, model availability, and price without notice.