

Treat roads more
like suggestions.



REVEL

QUALITY INNOVATION SERVICE

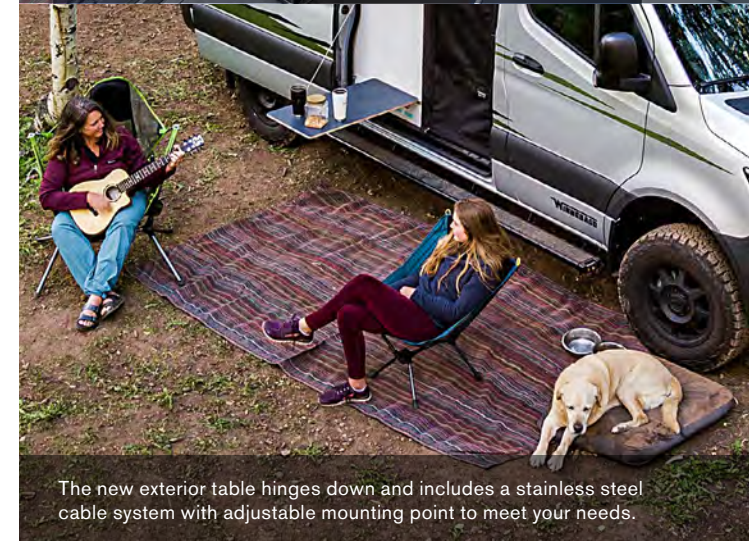
WINNEBAGO



On the Cover: 44E Blue Grey with Graphics
Interior: Intrepid with Pewter and Silver Springs Cabinetry



The redesigned galley includes a larger refrigerator, now more easily accessible from inside or out, a fixed faucet, and an induction burner that stores in a drawer to free up counter space.



The new exterior table hinges down and includes a stainless steel cable system with adjustable mounting point to meet your needs.

Get Out and Stay Out

The most off-road capable Camper Van we've ever built, the Winnebago® Revel® took the adventure van community by storm when it was introduced. Built on the 4WD version of the Mercedes-Benz® Sprinter chassis, the rugged Revel features a Power Lift platform bed that raises up to reveal a spacious Gear Garage, a cassette-style toilet to minimize weight and simplify operation, user-configurable storage solutions, and a host of other innovations.

The latest edition of the Revel continues to break new ground, with a redesigned galley, improved cabinetry, more durable interior, enhanced dinette and more. Two 125-amp-hour lithium iron phosphate (LiFePO4) batteries are charged via solar, shorepower or the dedicated second alternator. Together with the 2,000-watt inverter, this system provides enough power to run the Coleman®-Mach® 10 quiet A/C system when you need to cool down after a long hike.



The innovative bath can also be configured to provide additional storage, or to serve as a drying space for wet gear.

WINNEBAGO REVEL / Lounge



The Revel lounge is comfortable and highly functional. The cab seats swivel to face the lounge and the redesigned, more ergonomic bench seat. You'll also find storage below and behind the seat, plus in-floor storage ahead of it. Two seat belts (one 3-point and one lap belt) accommodate passengers, while a sturdier new removable pedestal table adds flexibility.

The Revel's new Hydronic Heating System provides comfortable, quiet heating, controlled by a user-friendly LED touchscreen panel. The new colorway (Intrepid, with Silver Springs or Pewter cabinets) features durable, easy-to-maintain surfaces, industrial-strength honeycomb flooring, and reverse-cove molding at cabinet bases to ease cleanup. The overhead cabinets now feature lightweight folded and welded aluminum construction to maximize internal storage volume, and new, more durable positive-latching slam latches. And rugged RAM® Tough-Track™ mounts provide a simple, uncluttered way to mount devices where you'd like them.



In-floor storage



Swiveling cab seats



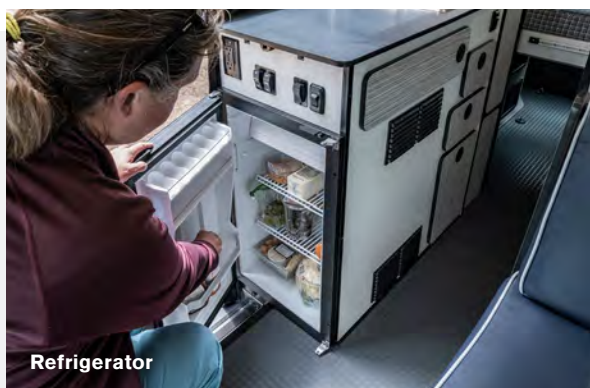
Cassette shades



Hydronic heating system panel



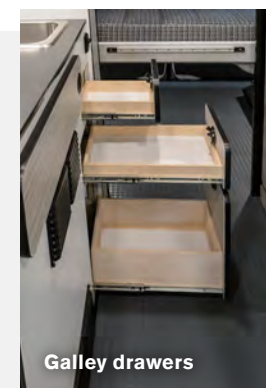
The redesigned galley makes efficient uses of available space to streamline cooking. The speedy induction cooktop now easily stores in a drawer when not in use to provide more counter space, and the larger refrigerator has been relocated for easy access from inside or out. A removable counter extension and new rectangular sink enhance working space; drawer space has been increased as well, with one drawer large enough to hold a small wastebasket.



Refrigerator



Removable counter extension and movable induction cooktop



Galley drawers



Induction storage drawer



The Revel's signature rear bump-outs allow the comfortable Power Lift bed to run cross-coach to provide added living space. Raising the bed transforms the living space into a Gear Garage with additional pocket storage, and provides easy access to the new gear bag storage beneath the bed, as well as access to the battery system, new internal freshwater tank and simplified water center panel.

The innovative wet bath includes a flexible showerhead, swiveling cassette toilet, and powered roof vent; deploying the two removable shelves or clothes hanger converts the bath to a handy storage locker for wet gear.



Gear bag storage



Pocket storage and water center panel



Wet bath



Cassette toilet disposal



Supportive, fully adjustable cab seats perfectly position you to take command of the Revel, aided by a full complement of Mercedes-Benz safety and performance features. The 4WD system includes high-low range, electronic stability, traction control and four-wheel ABS brakes as well as active brake assist to help avoid accidents with vehicles or pedestrians in front, **DISTRONIC PLUS®** adaptive cruise control, which maintains a defined distance from vehicles in front, and blind spot monitoring to help during lane changes, backing up and exiting the cab. Navigation help comes courtesy of the **MBUX®** infotainment center, which includes voice interface, Wi-Fi hotspot and rear camera.



Dash storage



MBUX infotainment center



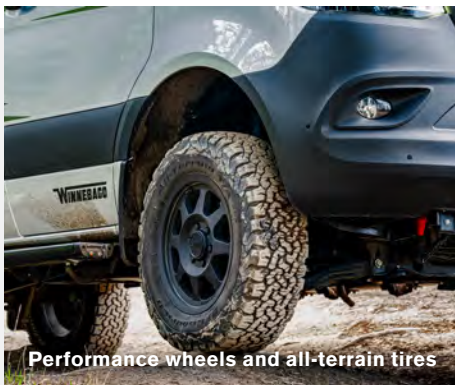
Steering wheel



Cab seats with privacy panels



The Revel exterior continues the emphasis on rugged functionality. A newly redesigned exterior table easily hinges down using a height-adjustable stainless steel cable support system, while the movable ladder provides easy access to the durable metal roof rack. Extend the Bluetooth®-controlled awning from your smart phone or tablet, deploy the side and rear screen doors to let the fresh air in, then sit back and relax after your latest adventure.



Performance wheels and all-terrain tires



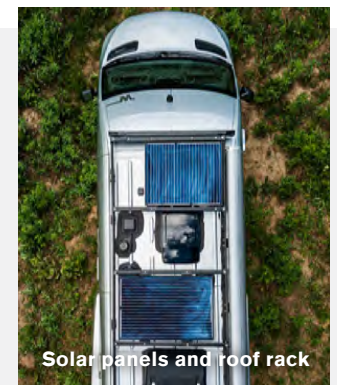
Movable ladder



Rear screen door

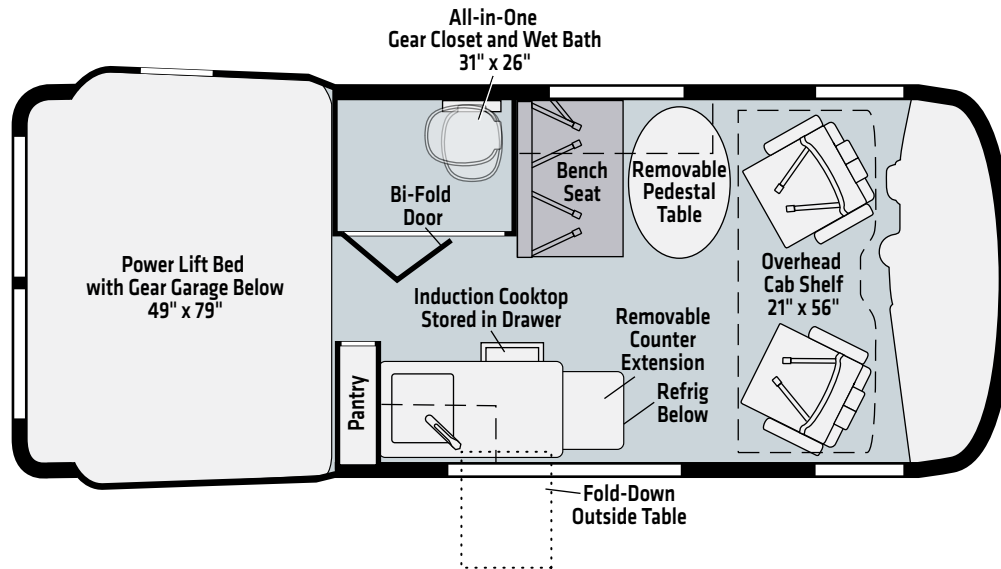


Bluetooth-controlled awning



Solar panels and roof rack

44E



Dashed lines denote overhead storage areas. Floorplans and specifications are also available online at Winnebago.com

WINNEBAGO
REVEL / Exterior



Blue Grey
FULL-BODY PAINT



Pebble Grey
FULL-BODY PAINT



Silver Forest
FULL-BODY PAINT



Pebble Grey with Graphics
FULL-BODY PAINT

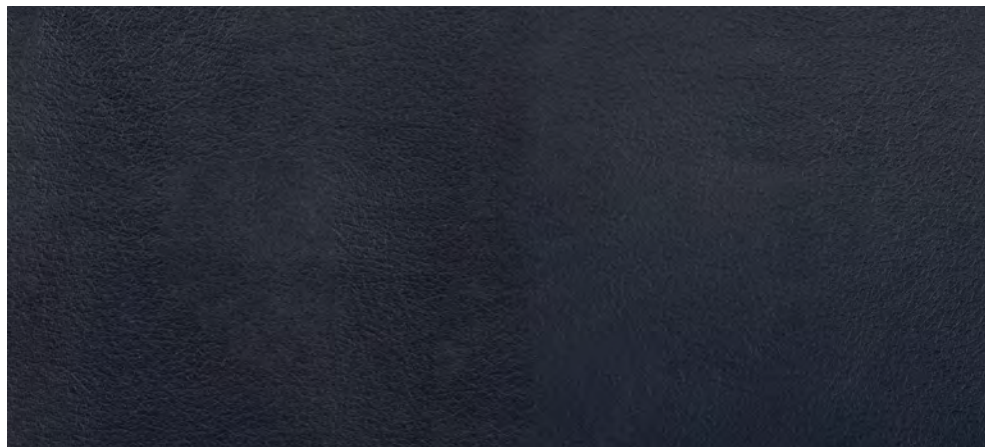


Blue Grey with Graphics
FULL-BODY PAINT



Silver Forest with Graphics
FULL-BODY PAINT

Intrepid



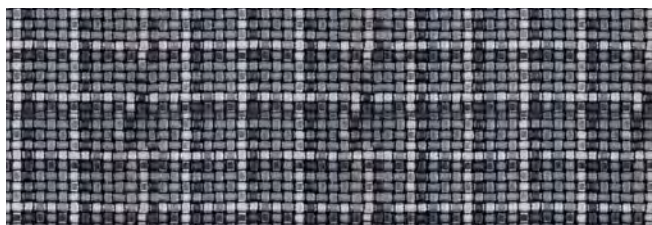
Ultraleather



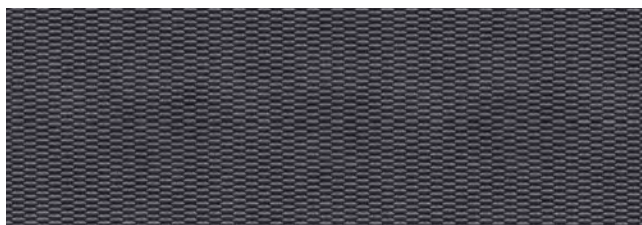
Accent



Wall Material



Bed Cover

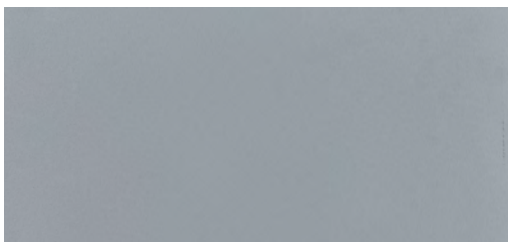


Countertop

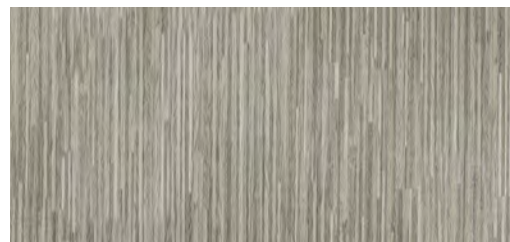


Vinyl Flooring

Cabinets



Pewter



Silver Springs

Winnebago® reserves the right to change décor materials and specifications without notice or obligation.



WEIGHTS & MEASURES	44E
Length	19'7"
Exterior Height ¹	10'
Exterior Width	7'1"
Awning Length	9'6"
Interior Height	6'3"
Interior Width	5'8"
Freshwater Tank Capacity ² (gal.)	21
Water Heater Capacity (gal.)	Continuous
Cassette Toilet Capacity ² (gal.)	5
Holding Tank Capacity - Gray ² (gal.)	21
LP Capacity (gal.)	NA
Fuel Capacity (gal.)	24.5
GCWR ³ (lbs.)	13,930
GVWR (lbs.)	9,050
GAWR - Front (lbs.)	4,101
GAWR - Rear (lbs.)	5,359
Wheelbase	144"

Mercedes-Benz® Sprinter Chassis

3.0L 6-cylinder, 188-hp, turbo-diesel engine, 7G-Tronic automatic transmission, 220-amp. alternator

On-demand 4WD w/Hi/Lo range, electronic stability and traction control

4-wheel ABS brakes

Trailer hitch⁴ 5,000-lb. drawbar/500-lb. maximum vertical tongue weight

7-pin wiring connector

OPTIONAL EQUIPMENT

Performance wheels and BF Goodrich® T/A® KO2 all-terrain tires

Cab Conveniences

MBUX® touchscreen multimedia infotainment center w/navigation, Wi-Fi hotspot, intelligent voice control and rear camera

Cab seats armrests, adjustable lumbar support, adjustable headrest, and slide/swivel/recline

3-point seat belts

Dual airbags

DISTRONIC PLUS® (adaptive cruise control)

Power steering w/tilt wheel

Power mirrors w/defrost and turn signals

Power door locks w/remote

Power windows

12-volt powerpoints

Sunvisors

Folding privacy screens for cab door windows

Appliqué package

Keyless entry w/remote

Entry door assist handle w/RAM® Tough-Track™ mounts

Rain sensor w/integrated wet wiper system

High beam assist

Active brake assist

Dash charging station

Active lane keeping assist

Blind spot assist

Traffic sign assist

Interior

LED ceiling lights w/dimmer switch

Tinted dual-pane euro acrylic windows w/cassette shades

Deluxe powered ventilator fan w/rain cover

Systems monitor panel

USB charging points

RAM® Tough-Track™ mounts throughout

Heavy-duty vinyl flooring throughout

Galley

Removable counter extension

Laminate countertop

Portable single burner induction range top

3.0 cu. ft. 12V compressor driven refrigerator/freezer

Stainless steel sink w/single control faucet

Pantry

Removable, pedestal table

Full-extension drawers

Bath

Flexible showerhead

Shower curtain

Shower w/wall surround

Wet bath 31"x26"

2 removable shelves convert to wet storage cabinet

Removable clothes rod

Swiveling cassette toilet

Powered roof vent

Bedroom

Power lift bed w/molded pockets and zip storage below

Under-bed gear garage storage w/six removable cargo tie-down anchors

Powered roof vent

Reading lights

Exterior

Side screen door w/magnetic closure system

Rear screen door w/blackout panel

Powered patio awning w/LED lighting and Bluetooth® control

Porch light w/interior switch

Running boards w/ground effect lighting and rubber trim

Rear mud guards

Movable ladder

Luggage rack

Fold-down exterior table

Heating & Cooling System

Hydronic Heating System w/LED touchscreen panel

OPTIONAL EQUIPMENT

Coleman®-Mach® 10 NDQ air conditioner w/directional vents, Bluetooth® control and built-in thermostat

Electrical System

AC/DC load center/converter

(2) 125-amp.-hour Lithium ion batteries w/dedicated second alternator to charge system

Coach battery disconnect system

Dual-battery charge system

30-amp. power cord

Solar panel/battery charger

2,000-watt inverter/charger

Roof port wiring access



Plumbing System

Water center control panel includes all control valves, connection points and exterior wash station w/pump switch

Winterization Package w/valve and siphon tube

On-demand water pump

Galley drain pump

Insulated/heated gray water holding tank

Potable water tank

Safety

Smoke and carbon monoxide detectors

10 BC fire extinguisher

Ground fault interrupter

High-mount brake lamps

Daytime running lamps

Warranty⁴

12-month/15,000-mile basic warranty⁵

FOOTNOTES

1. The height of each model is measured to the top of the tallest standard feature and is based on the curb weight of a typically equipped unit. The actual height of your vehicle may vary by several inches depending on chassis or equipment variations. Please contact your dealer for further information.
2. Capacities are based on measurements prior to tank installation. Slight capacity variations can result due to installation applications.
3. Actual towing capacity is dependent upon your particular loading and towing circumstances, which includes the GVWR, GAWR and GCWR as well as adequate trailer brakes. Please refer to the Operator's Manual of your vehicle for further towing information.
4. See separate chassis warranty.
5. See your dealer for complete warranty information.

NA Not Available

Not all items available in combination. See dealer for details.

Because features, specifications, equipment, and options may vary from those highlighted in this brochure, the buyer is responsible for confirming with the dealer the features, specifications, equipment, and options included on their specific vehicle. In addition, Winnebago's program of continuous product improvement may result in changes to vehicle specifications, equipment, model availability, and price without notice.