

Best-in-Class  
comfort with  
style to spare.



# PORTO

QUALITY INNOVATION SERVICE

**WINNEBAGO**



**24F** Compass with Luxury Linen and Walnut cabinetry  
Featured on the cover: Anthem, Full-Body Paint



The roomy, fully equipped Porto galley features a double-door refrigerator, three-burner range, and plenty of light.



The optional reclining theater seating includes footrests, a center console with dual cupholders, and a removable pedestal table.



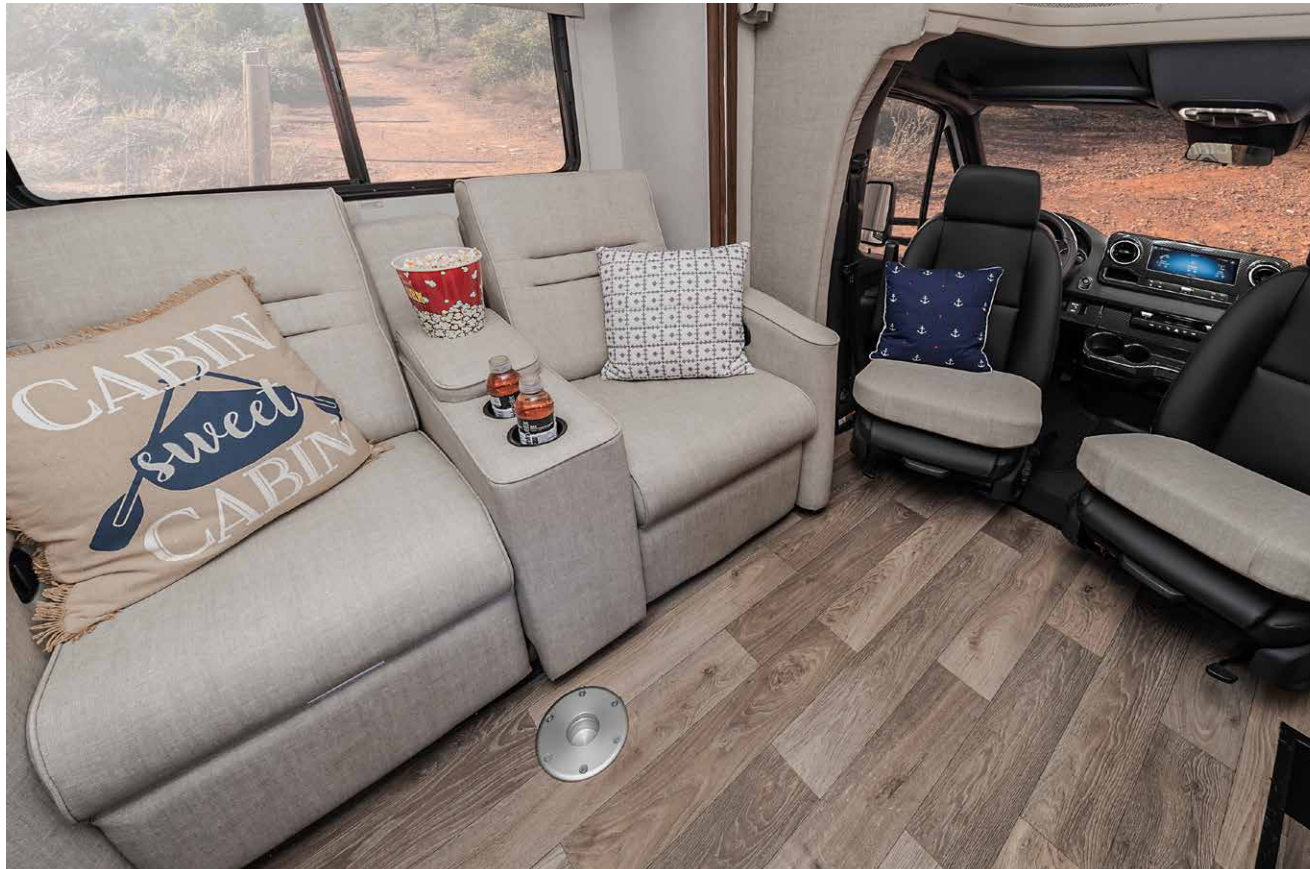
The comfortable corner bed in the 24F is a class-leading 80" long – perfect for stretching out after a big day.

## New thinking from the ground up.

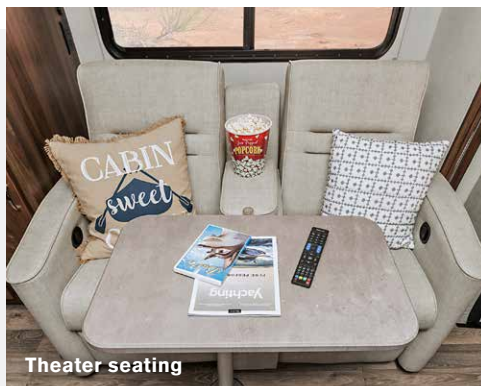
The Winnebago® Porto® may be the ultimate compact Class C motorhome. In addition to the power, fuel economy and latest safety features of its Mercedes-Benz® Sprinter chassis, the Porto incorporates numerous best-in-class innovations, including the largest galley, highest carrying capacity, largest holding tank capacity, and longest bed (24F), placing this sub-25-foot coach head and shoulders above the competition.

The Porto's two slideout-equipped, budget-friendly floorplans come with a long list of standard features, including two 100-watt solar panels, a 1,000-watt pure sine wave inverter, Cummins Onan® MicroQuiet™ generator and dual group 31 batteries for extended camping. And available dual reclining theater seating with center console and removable pedestal table, and new full-body paint and interior colorways let you make your Porto truly your own.

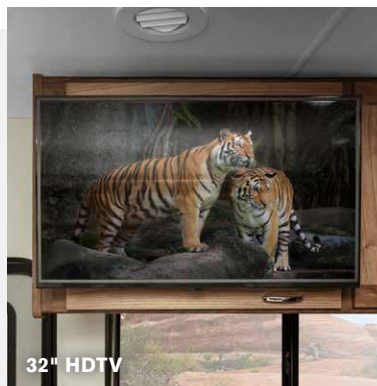




Extend the driver's-side slideout and relax in the Porto's comfortable lounge. The dinette is perfect for reading or games, and offers a terrific view out the large galley window. The cab seats swivel for even more seating options. Movie buffs can enjoy the 32" HDTV from the available theater seating, and 110V, 12V, and USB charging ports in the lounge and overhead bunk make it easy to keep devices fully charged and ready to go.



Theater seating



32" HDTV



Swivel cab seats



Lounge window





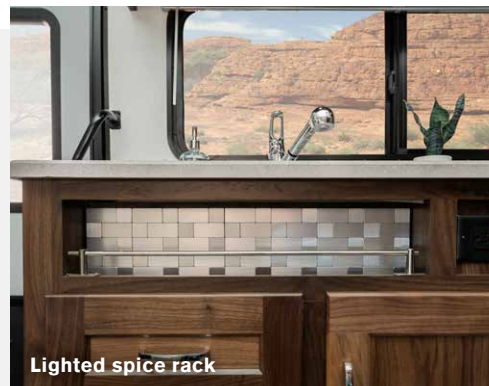
Channel your inner gourmet with the Porto's spacious, well-equipped galley. Cooking is easy with the three-burner LP cooktop and touch-control microwave convection oven (just below the cook-top for easy access), and the 7.3 cu. ft. double-door residential refrigerator/freezer keeps things chill. Storage abounds, with multi-use storage/wardrobe areas, dinette storage that can also serve as a nightstand or extend the sleeping space, even a lighted rack to keep spices in place.



Range



Drawer extension



Lighted spice rack



Double-door refrigerator



Multi-use storage





At day's end, turn in to the 80" bed (24F), longest in the class, or the walkaround queen bed with dual nightstands in the 24P, each equipped with 110V, 12V and USB charging ports. In both floorplans, our SuperShell™ construction enhances the comfort and quiet of the overhead bunk. In the bath, you'll find a shower with skylight, retractable self-cleaning shower door, powered roof vent, medicine cabinet, linen cabinet (24F) and robe hooks.



Overhead bunk



Medicine cabinet and vanity



Shower with skylight



Linen cabinet





When you hit the road, the Porto's multi-function steering wheel puts control at your fingertips. Standard Mercedes-Benz safety features include: Active Lane Keeping Assist which warns of lane departure and, if necessary, guides the vehicle back into the lane; and Active Brake Assist to help avoid accidents with vehicles or pedestrians in front. The MBUX® infotainment center is also standard, and features navigation, voice interface, Wi-Fi hotspot and rear camera. The comfortable leatherette-covered cab seats are fully adjustable, and easily swivel to provide additional lounge seating.



Infotainment center



Dash storage



Steering wheel



Swiveling cab seats



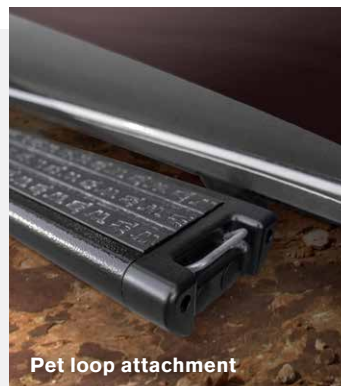
# WINNEBAGO PORTO / Exterior



With its attractive full-body paint or graphics package, the Porto enhances any campsite. Hydraulic front and rear jacks with automatic controls make it easy to keep things on the level. Use the screened entrance to aid airflow, and when night falls, the porch, powered awning and large rear storage compartments are lit by LEDs. And the included pet loop attachment makes it easy to keep pets from venturing off to explore on their own.



Stainless steel wheel



Pet loop attachment



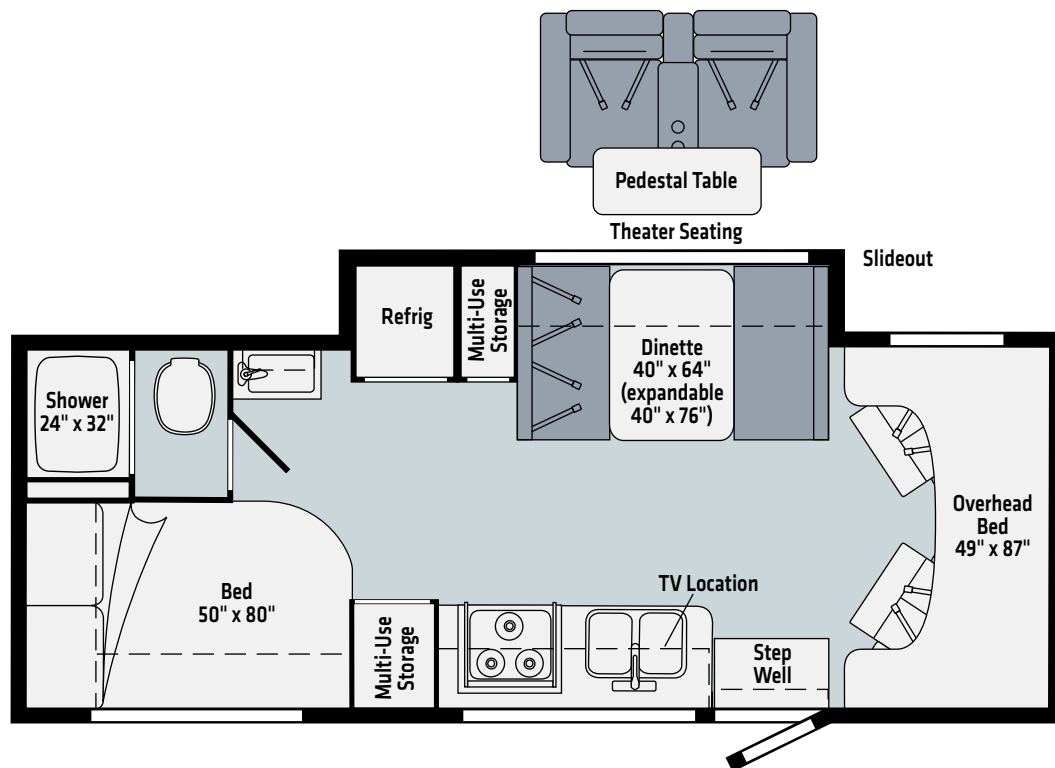
Rear storage



Screened entrance door

## 24F

*Dealer Stock Only*



Luxury  
Linen

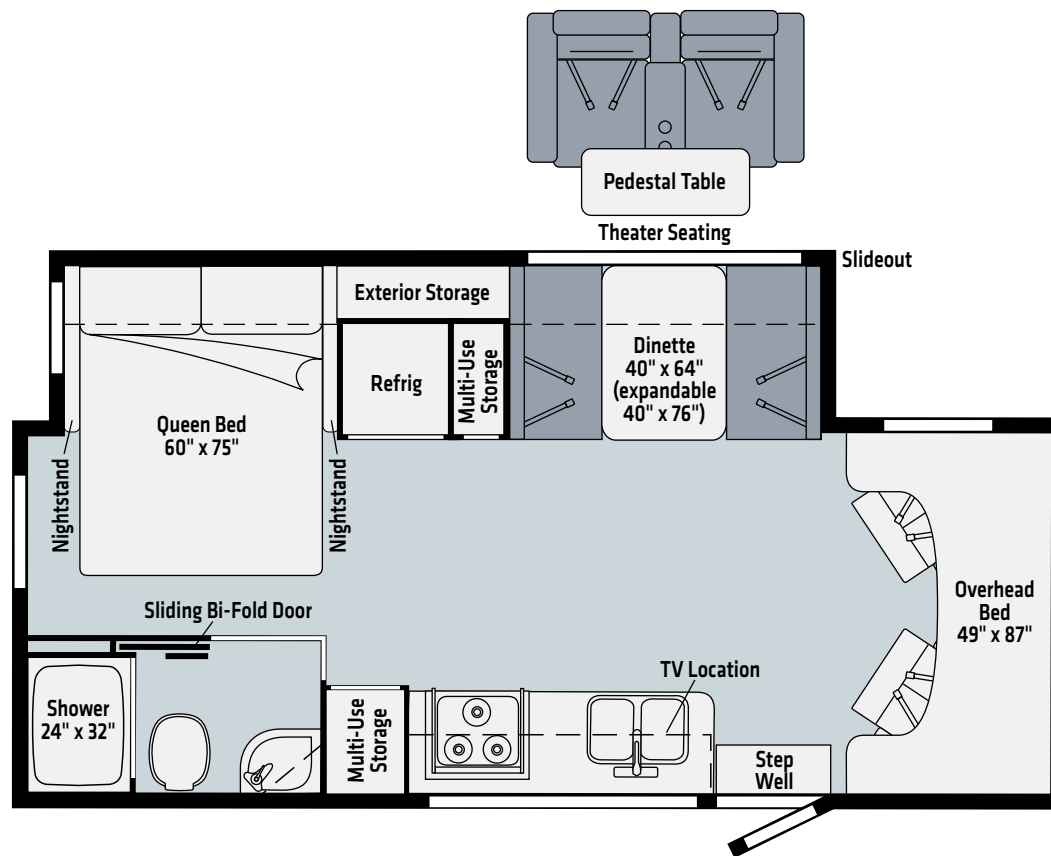
Vinyl

*Dashed lines denote overhead storage areas. Floorplans and specifications are also available online at [Winnebago.com](http://Winnebago.com)*



## 24P

*Dealer Stock Only*



Luxury  
Linen

Vinyl

*Dashed lines denote overhead storage areas. Floorplans and specifications are also available online at [Winnebago.com](http://Winnebago.com)*



**Canyon Mist**  
DELUXE GRAPHICS



**Pacific Mist**  
DELUXE GRAPHICS



**Anthem**  
FULL-BODY PAINT



**Spruce Mist**  
FULL-BODY PAINT



**Harbor**  
FULL-BODY PAINT



## Compass



Luxury Linen



Wall Board



Bed Cover



Countertop



Vinyl Flooring

## Wood

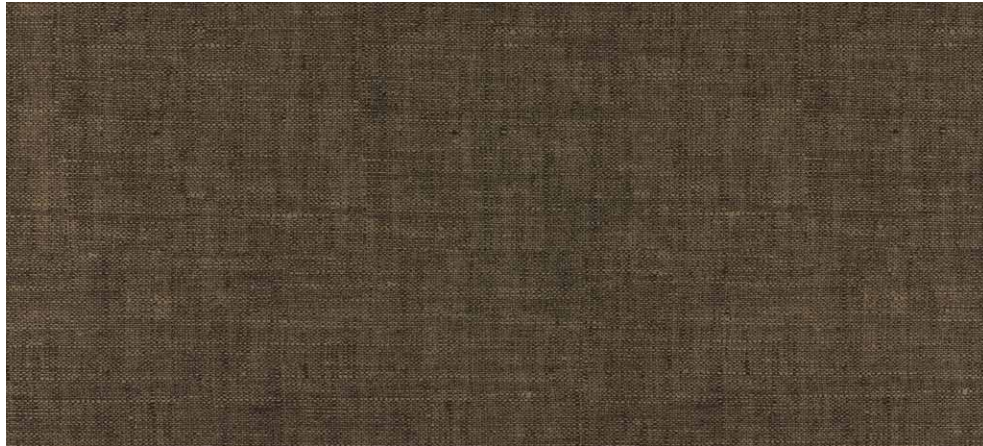


Walnut

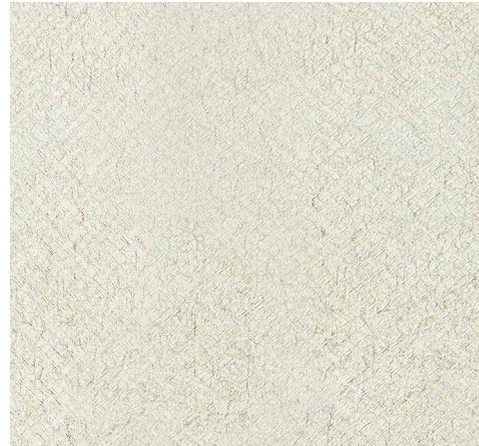
*Winnebago® reserves the right to change décor materials and specifications without notice or obligation.*



## Expedition



Luxury Linen



Wall Board



Bed Cover



Countertop



Vinyl Flooring

## Wood



Weathered Teak

*Winnebago® reserves the right to change décor materials and specifications without notice or obligation.*



WEIGHTS & MEASURES	24F	24P
Length	24'5"	24'5"
Exterior Height <sup>1</sup>	11'7"	11'7"
Exterior Width	7'6"	7'6"
Exterior Storage <sup>2</sup> (cu. ft.)	42	45
Awning Length	15'	15'
Interior Height	7'	7'
Interior Width	7'3"	7'3"
Freshwater Tank Capacity <sup>3</sup> (gal.)	37	37
Water Heater Capacity (gal.)	6	6
Holding Tank Capacity - Black/Gray <sup>3</sup> (gal.)	41/41	41/41
LP Capacity <sup>4</sup> (lbs.)	50.76	50.76
Fuel Capacity (gal.)	24.5	24.5
GCWR <sup>5</sup> (lbs.)	15,250	15,250
GVWR (lbs.)	11,030	11,030
GAWR - Front (lbs.)	4,410	4,410
GAWR - Rear (lbs.)	7,720	7,720
Wheelbase	170"	170"

## Mercedes-Benz® Sprinter Chassis

**3.0L 6-cylinder, 188-hp, turbo-diesel engine, 7G-Tronic transmission, 220-amp. alternator**

**Adaptive ESP® technology**

**LED headlights** w/high beam assist

**Hydraulic brakes** w/ABS

**Trailer hitch<sup>5</sup>** 5,000-lb. drawbar/500-lb. maximum vertical tongue weight w/7-pin connector

**Stainless steel wheel liners**

**2-point electric stabilizing system**

### OPTIONAL EQUIPMENT

**Hydraulic leveling jacks** w/automatic controls (front and rear)

## Cab Conveniences

**MBUX® touchscreen multimedia infotainment center** w/navigation, Wi-Fi hotspot, intelligent voice control and rear camera

**Heated power control cab seats** armrest, adjustable lumbar support, headrest, recline, swivel and manual swivel

**Airbags** driver and passenger

**3-point seat belts**

**Climate control**

**Power door locks** w/remote

**Power windows**

**Power mirrors** w/defrost and turn signals

**DISTRONIC PLUS®** (adaptive cruise control)

**Power steering** w/tilt wheel

**Active brake assist**

**Leather wrapped steering wheel**

**Lane keeping assist**

**Hill start assist**

**Crosswind assist**

**Attention assist**

**Traffic sign assist**

**Rain sensor** w/integrated wet wiper system

**Sunvisors**

**12-volt/USB powerpoints**

**Folding privacy screens**

**2 cab seat lounge cushions**

## Interior

**32" HDTV**

**LED lights**

**Systems monitor panel**

**Amplified digital HDTV antenna**

**Powered roof vent** (front bunk)

**Roof vent** (galley)

**Mini blinds** (galley)

**Pleated night shades**

**Tinted coach windows**

**Vinyl flooring** throughout

**Assist bar**

**USB charger**

**12V power outlets**

### OPTIONAL EQUIPMENT

**Theater seating** w/pedestal table

## Galley

**Thermoformed countertops and decorative backsplash**

**Microwave/convection oven**

**3-burner range** w/cover

**Double-door 7.3 cu. ft. residential refrigerator/freezer**

**Pantry** w/adjustable shelves

**Double sink** w/cover

**Roof vent**

**Lighted spice rack**

## Bath

**Shower** w/wall surround

**Retractable, self-cleaning shower screen**

**Flexible showerhead**

**Shower skylight**

**Toilet** w/hand flush

**Powered roof vent**

**Towel bar** (24P)

**Tissue holder**

**Robe hook(s)**

**Medicine cabinet**

**Decorative backsplash** (24F)

**Sliding bathroom door** (24P)

**Linen cabinet** (24F)

## Bedroom

**Corner bed** w/foam mattress, mattress cover (24F)

**Queen bed** w/cabinet, foam mattress and mattress cover (24P)

**Wardrobe** w/metal clothes rod

## Exterior

**LED porch light** w/interior switch

**Front mud flaps**

**Powered patio awning** w/LED lights

**Lighted storage compartments**

**Ladder**

**Entrance screen door**

**Running board** w/logo tread

**Pet leash attachment**

## Heating & Cooling

**13,500 BTU Coleman®-Mach® 10 Quiet air conditioner**

**20,000 BTU low-profile furnace**

## Electrical System

**Exterior AC duplex**

**Exterior antenna jack**

**Battery disconnect system** (coach)

**Automatic dual-battery charge control**

**AC/DC load center, 55-amp. converter/charger**

**2 deep-cycle, Group 31 RV batteries**

**3,600-watt Cummins Onan® MicroQuiet™ LP generator**

**1,000-watt pure sine wave DC/AC inverter**

**(2) 100-watt solar panel/battery charger** w/controller, junction box, and plug for additional portable solar panel

**Cable TV input**

**30-amp. power cord**

**Portable satellite dish hookup**

**Roof port wiring access**

## OPTIONAL EQUIPMENT

**3,200-watt Cummins Onan® Diesel generator**

## Plumbing System

**Pressurized city water hookup**

**6-gal. LP water heater** w/electric ignition

**Permanent-mount LP Tank**

**On-demand water pump**

**LPG accessory connection** (patio area)

**Holding tank flushing system**

## Safety

**LP, smoke, and carbon monoxide detectors**

**10 BC fire extinguisher**

**Ground fault interrupter**

**Child seat tether anchor**

**High-mount brake lamps**

**Daytime running lamps**

## Warranty<sup>6</sup>

**12-month/15,000-mile basic limited warranty<sup>7</sup>**

**36-month/36,000-mile limited warranty on structure<sup>7</sup>**

**15-year warranty on PVC roofing system<sup>7</sup>**

## FOOTNOTES

1. The height of each model is measured to the top of the tallest standard feature and is based on the curb weight of a typically equipped unit. The actual height of your vehicle may vary by several inches depending on chassis or equipment variations. Please contact your dealer for further information.
2. The load capacity of your motorhome is designated by weight, not by volume, so you cannot necessarily use all available space when loading your motorhome.
3. Capacities are based on measurements prior to tank installation. Slight capacity variations can result due to installation applications.
4. Capacities shown are tank manufacturer's listed water capacity (W.C.). Actual filled LP capacity is 80% of listing due to overfilling prevention device on tank.
5. Actual towing capacity is dependent on your particular loading and towing circumstances which includes the GVWR, GAWR, and GCWR, as well as adequate trailer brakes. Please refer to the Operator's Manual of your vehicle for further towing information.
6. See separate chassis warranty.
7. See your dealer for complete warranty information.

NA Not Available

Not all items available in combination. See dealer for details.

Because features, specifications, equipment, and options may vary from those highlighted on this brochure, the buyer is responsible for confirming with the dealer the features, specifications, equipment, and options included in their specific vehicle. In addition, Winnebago's program of continuous product improvement may result in changes to vehicle specifications, equipment, model availability, and price without notice.