

Choose your own
adventure.



QUALITY INNOVATION SERVICE

MINNIE WINNIE

WINNEBAGO



Ready When You Are.

With six versatile floorplans ranging from 24'5" to just under 33 feet long, and sleeping accommodations for up to eight, the Winnebago® Minnie Winnie® is the perfect choice for families of all shapes and sizes.

Built on the proven Ford® E-350/E-450 chassis, this classic Class C coach is back and better than ever, with new and returning floorplans, each loaded with the features and amenities you need to enjoy both the journey and the destination. The Minnie Winnie provides plenty of storage solutions to handle your favorite toys and gear, and a new second coach battery and 1,000-watt inverter provide added juice when you need it.

Best of all, the Minnie Winnie delivers all the benefits of Winnebago's decades of RV manufacturing experience, from its many innovative features to our legendary build quality – all at a family-friendly price point.

WINNEBAGO

MINNIE WINNIE / Lounge



The large U-shaped dinette (N/A 25B) makes the Minnie Winnie lounge meeting-place central for planning or unwinding after the day's activities. The large tinted windows provide great views in camp or on the road, and the blackout roller shades ensure privacy when deployed. The 32" HDTV with DVD player is standard, as is the amplified digital HDTV antenna, and available theater seating (26T, 31H, 31K) with individually operated recliners and footrests makes movie nights an extra special treat. Our TrueComfort+™ sofa/bed, available on the 31K, extends to a full double bed (58" X 74") and offers a comfortable night's rest.



U-shaped dinette



Sofa



Swiveling cab seats



Theater seating

WINNEBAGO

MINNIE WINNIE / Galley



Feeding hungry troops or creating a gourmet masterpiece is a joy in the Minnie Winnie's well-appointed galley. Standard amenities include durable Corian® solid surface countertops, a three-burner range with glass cover (glass cover N/A 22R) and oven, microwave oven with touch controls, double-door refrigerator/freezer, stainless steel sink and vented range hood with light.



Corian® countertops



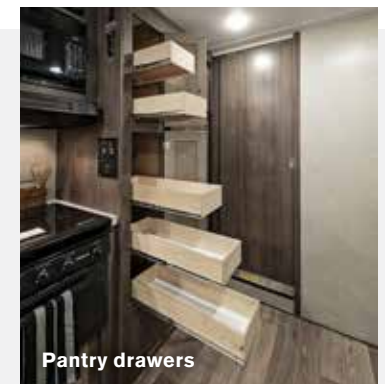
Refrigerator/freezer



Three-burner range



Stainless steel sink



Pantry drawers



Each Minnie Winnie floorplan features a rear bedroom with double or queen bed, wardrobe, and 24" HDTV – perfect for when the kids are sleeping. Up front, the large (57" x 95") cabover bunk, dinette and sofa/bed (N/A 22M, 22R) provide additional sleep spaces, and the bunkbeds in the 31H boost sleeping capacity to eight. The spacious bath includes a shower with flexible showerhead, lavatory and medicine cabinets, skylight, powered roof vent, and robe hook(s) and towel bar(s).



Cabover bunk



Dinette bed



Bathroom



Shower with skylight

WINNEBAGO

MINNIE WINNIE / Cab



The Minnie Winnie cab provides a commanding view of the road, and the new 7.3L Ford V-8 – dishing out an impressive 350 horsepower and 468 lb.-ft. of torque at 3,900 rpm – lets you navigate hills with ease. Standard safety features include Electronic Stability Control, which can automatically apply selective braking to prevent the vehicle from sliding sideways or skidding; Traction Control, to keep wheels from excessively spinning and helping maintain traction; and Hill Start Assist, which helps keep you from rolling backward while you transition from brake to accelerator.

Winnebago is the only conventional Class C manufacturer to offer the NEW Smart Driver-Assist Technology Package. The Smart Driver-Assist Technology Package adds numerous additional features, including Automatic Emergency Braking, which provides a visual warning, audible alert and display message when the vehicle detects a potential collision, and brake assist if corrective action is not taken; Lane Departure Warning; and Adaptive Cruise Control which employs both radar and camera technology to automatically adjust cruising speed according to traffic.



Cab seats



Radio/rearview monitor system



Cab privacy curtains

WINNEBAGO

MINNIE WINNIE / Exterior



In camp, unfurl the powered patio awning with LED lighting, unpack the lawn chairs from the large lighted trunk storage compartment, and admire how your Minnie Winnie really shines, thanks to its premium high-gloss fiberglass skin. Two attractive graphics packages and two full-body paint options are available; coupled with the variety of floorplans and options, you can pretty much bet you'll have the only Minnie Winnie of its kind wherever you roam.



Awning lights



Exterior rear storage



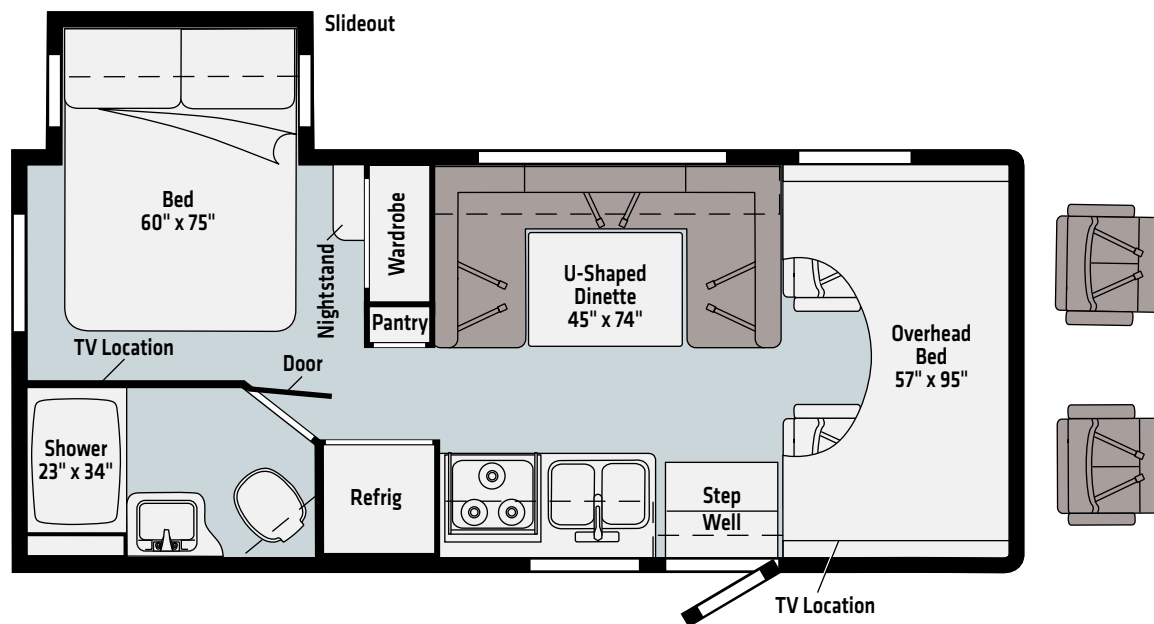
Stainless steel wheel liners

WINNEBAGO

MINNIE WINNIE / Floorplan



22M



Ultrafabrics
UF2 Premium
Leatherette

Vinyl

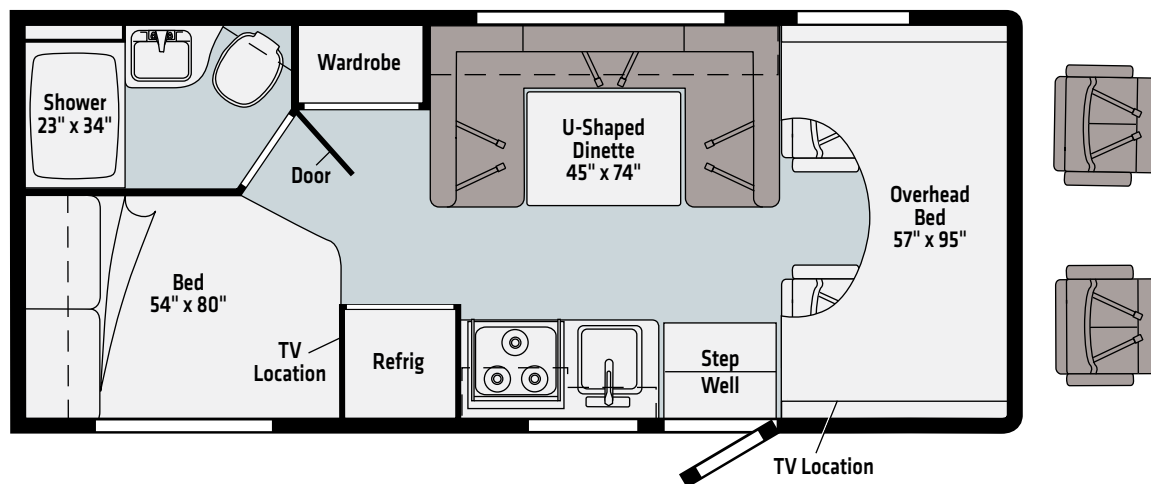
Dashed lines denote overhead storage areas. Floorplans and specifications are also available online at Winnebago.com

WINNEBAGO

MINNIE WINNIE / Floorplan



22R

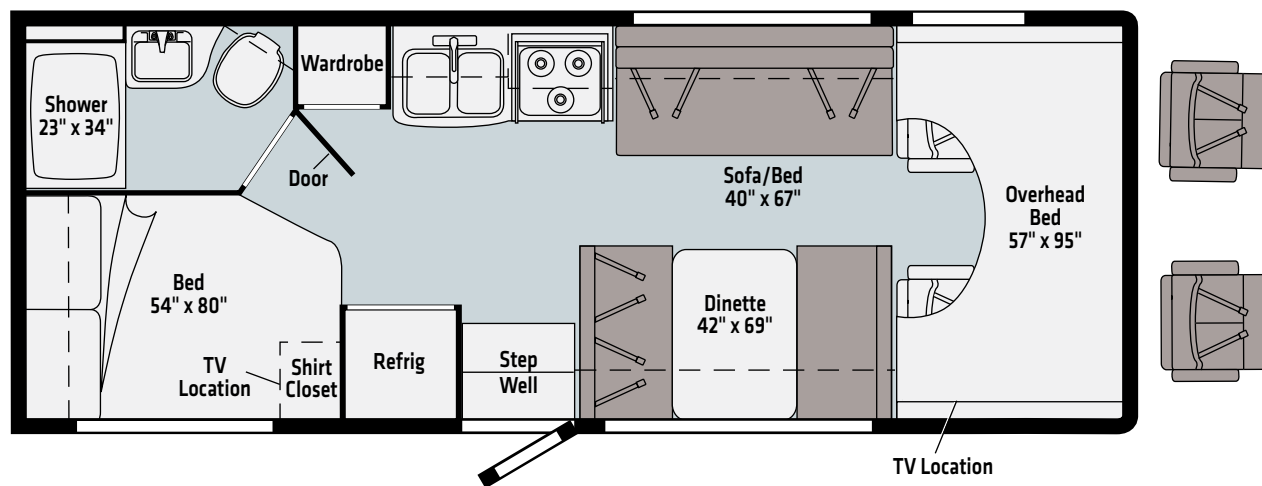


Ultrafabrics
UF2 Premium
Leatherette

Vinyl

Dashed lines denote overhead storage areas. Floorplans and specifications are also available online at Winnebago.com

25B



Ultrafabrics
UF2 Premium
Leatherette

Vinyl

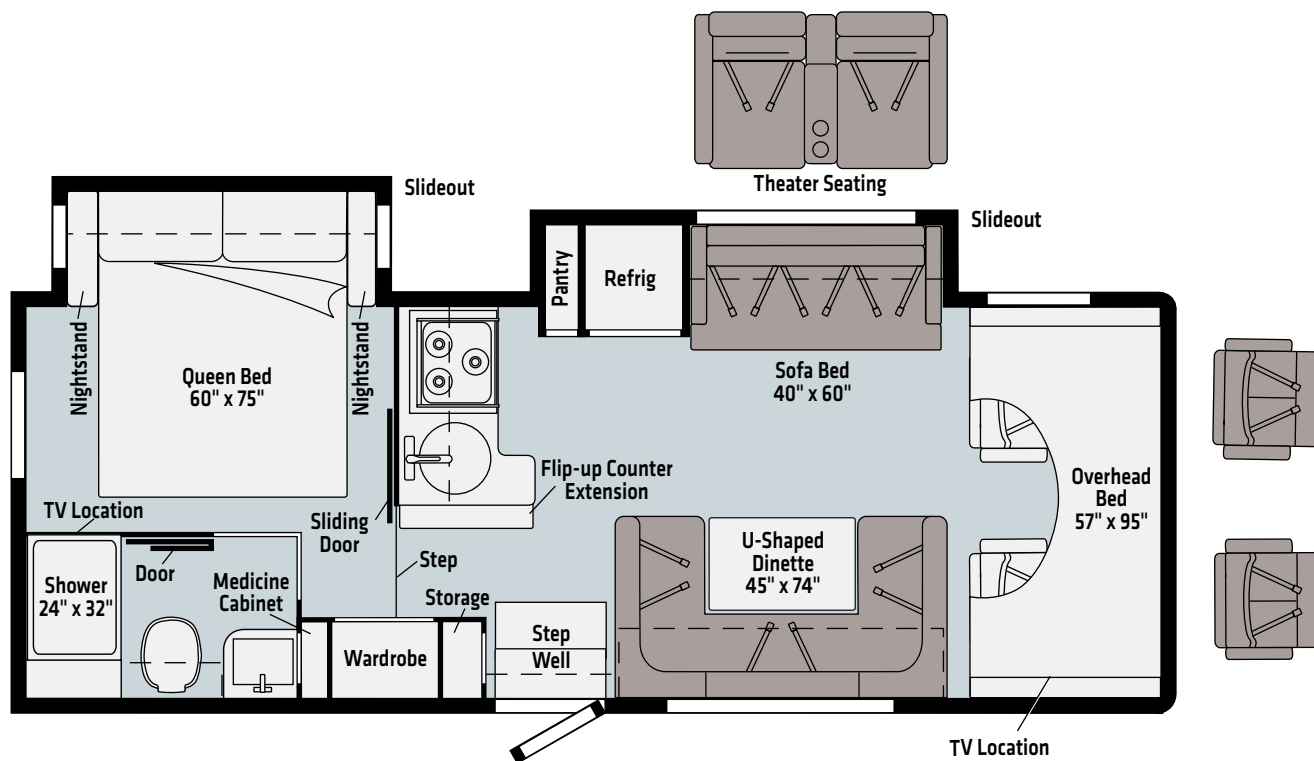
Dashed lines denote overhead storage areas. Floorplans and specifications are also available online at Winnebago.com

WINNEBAGO

MINNIE WINNIE / Floorplan



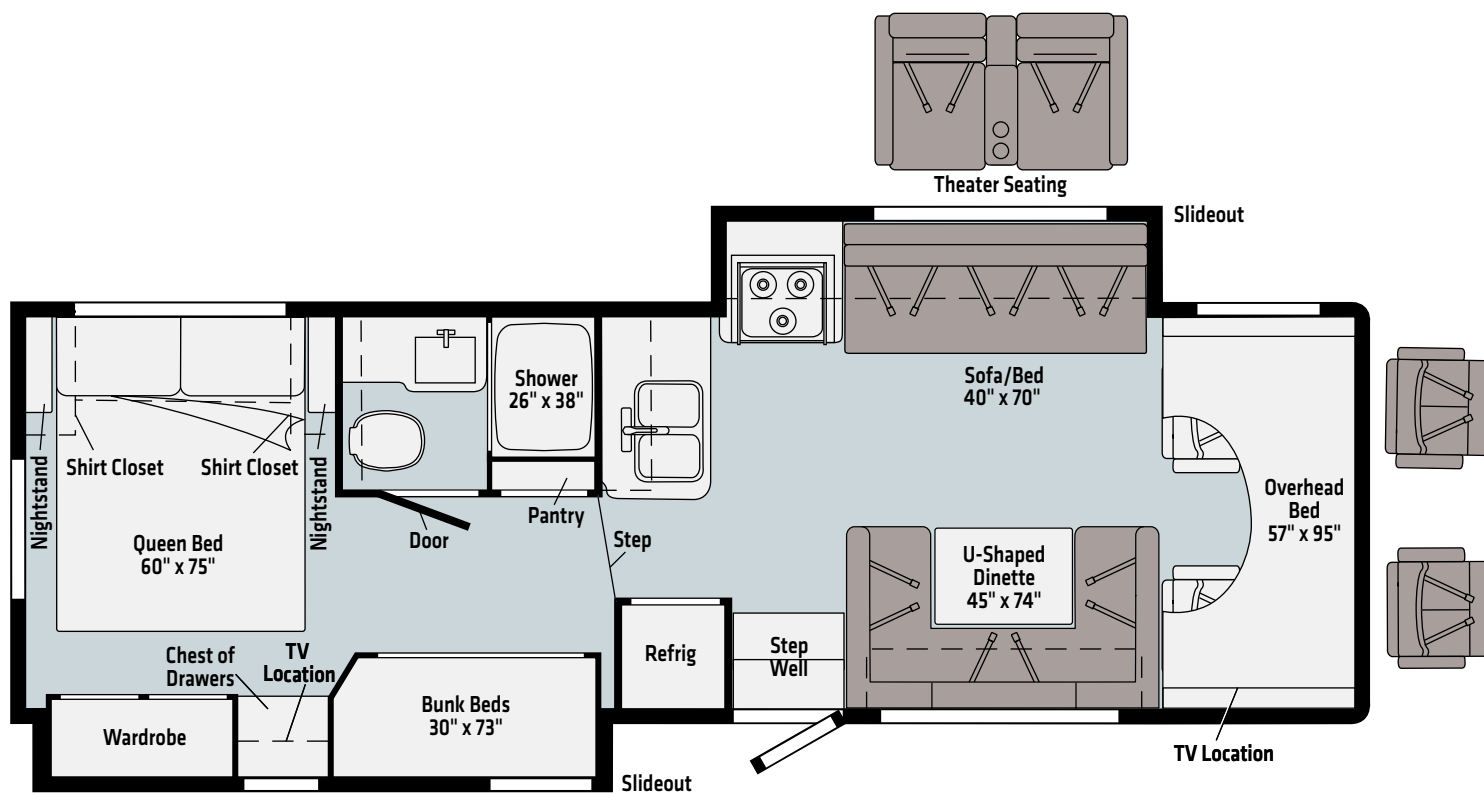
NEW
26T



Ultrafabrics
UF2 Premium
Leatherette

Vinyl

31H

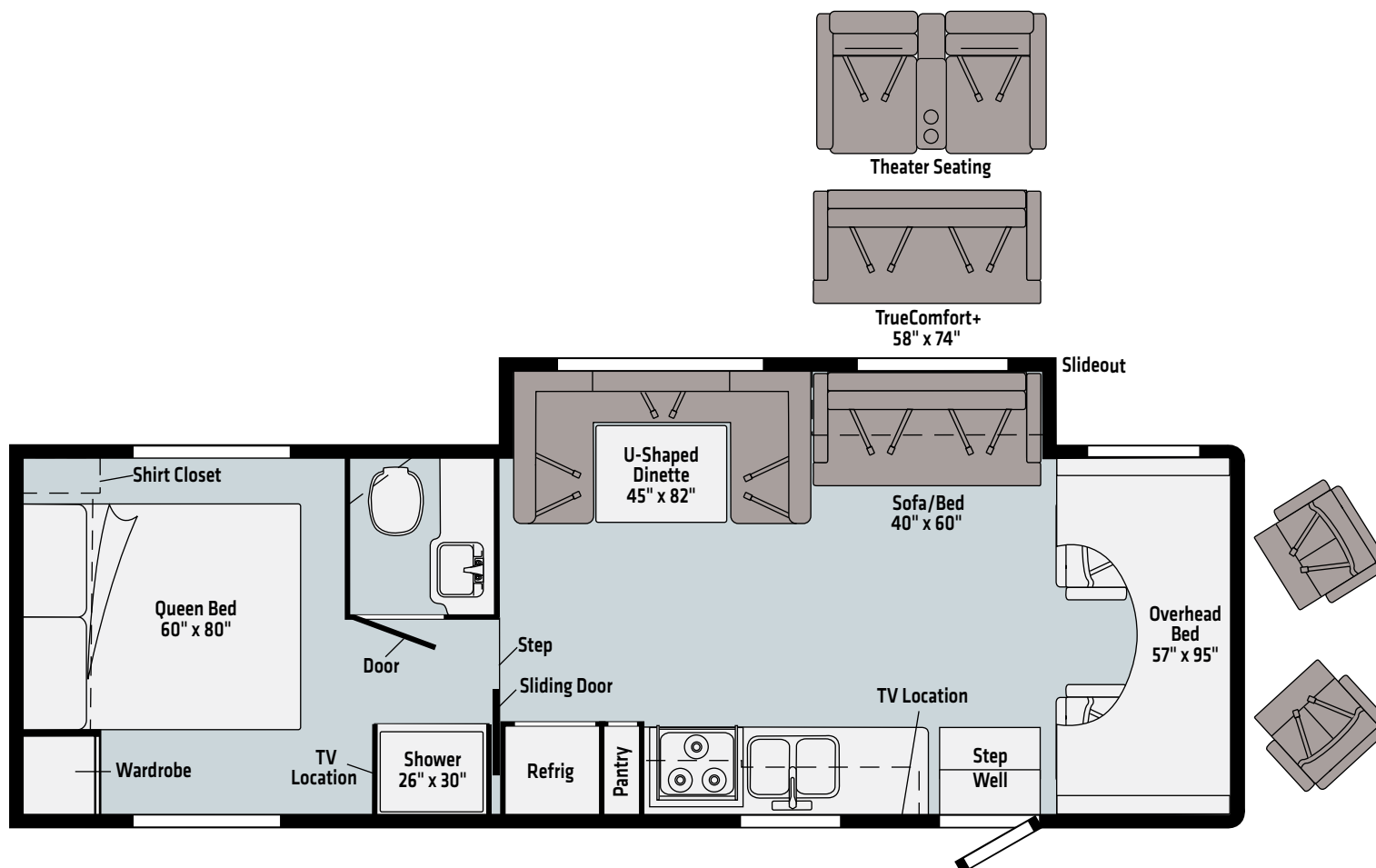


Ultrafabrics
UF2 Premium
Leatherette

Vinyl

Dashed lines denote overhead storage areas. Floorplans and specifications are also available online at Winnebago.com

31K



Ultrafabrics
UF2 Premium
Leatherette

Vinyl

Dashed lines denote overhead storage areas. Floorplans and specifications are also available online at Winnebago.com

WINNEBAGO

MINNIE WINNIE

Exterior Graphics



Catalina

DELUXE GRAPHICS



Chestnut

DELUXE GRAPHICS



Cool Mist

FULL-BODY PAINT



Suede

FULL-BODY PAINT

Starr



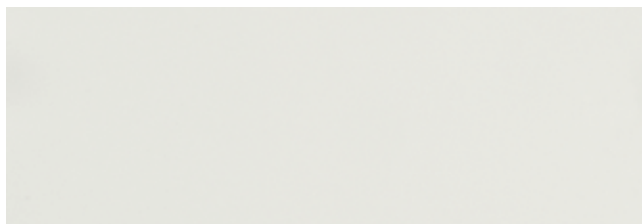
Ultrafabrics UF2 Premium Leatherette



Wall Board



Bed Cover



Countertop



Vinyl Flooring

Wood



Walnut

Winnebago® reserves the right to change décor materials and specifications without notice or obligation.

Lennon with Charcoal



Ultrafabrics UF2 Premium Leatherette



Wall Board



Bed Cover



Countertop



Vinyl Flooring

Wood



Driftwood II

Winnebago® reserves the right to change décor materials and specifications without notice or obligation.

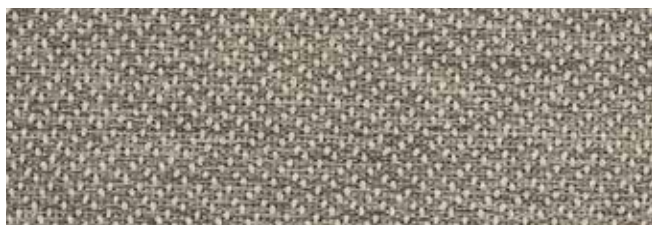
Lennon with Medium Gray



Ultrafabrics UF2 Premium Leatherette



Wall Board



Bed Cover



Countertop



Vinyl Flooring

Wood



Driftwood II

Winnebago® reserves the right to change décor materials and specifications without notice or obligation.

WEIGHTS MEASURES	22M	22R	25B	26T	31H	31K
Length	24'5"	23'10"	26'4"	28'5"	32'9"	32'9"
Exterior Height¹	10'11" ^A /11' ^B	10'11" ^A /11' ^B	11'	11'	11'	11'
Exterior Width²	8'5.5"	8'5.5"	8'5.5"	8'5.5"	8'5.5"	8'5.5"
Exterior Storage³ (cu. ft.)	44.5	60.4	73.1	45	85	108.3
Awning Length	14'	14'	17'	17'	10'4"	20'
Interior Height	6'10"/6'5.5"*	6'10"	6'10"	6'10"/6'5.5"*	6'10"/6'5.5"*	6'10"/6'5.5"*
Interior Width	8'	8'	8'	8'	8'	8'
Freshwater Tank Capacity⁴ (gal.)	40	40	40	44	44	44
Water Heater Capacity (gal.)	6	6	6	6	6	6
Holding Tank Capacity-Black/Gray⁴ (gal.)	40/45	21/24	21/26	35/41	37/34	30/30
LP Capacity⁵ (lbs.)	76.14	76.14	76.14	76.14	76.14	76.14
Fuel Capacity (gal.)	55	55	55	55	55	55
GCWR⁶ (lbs.)	18,500 ^A /22,000 ^B	18,500 ^A /22,000 ^B	22,000 ^B	22,000 ^B	22,000 ^B	22,000 ^B
GVWR (lbs.)	12,500 ^A /14,500 ^B	12,500 ^A /14,500 ^B	14,500 ^B	14,500 ^B	14,500 ^B	14,500 ^B
GAWR - Front (lbs.)	5,000	5,000	5,000	5,000	5,000	5,000
GAWR - Rear (lbs.)	8,500 ^A /9,600 ^B	8,500 ^A /9,600 ^B	9,600 ^B	9,600 ^B	9,600 ^B	9,600 ^B
Wheelbase	158"	158"	182"	190"	220"	220"

* Rear of Coach ^A Ford E350 Chassis ^B Ford E450 Chassis

Chassis

Ford® E350 Chassis 350-hp 7.3L V8 Premium Engine, TorqShift 6-speed automatic transmission w/overdrive, 210-amp. alternator (22M, 22R)

Ford E450 Chassis 350-hp 7.3L V8 Premium Engine, TorqShift 6-speed automatic transmission w/overdrive, 210-amp. alternator (25B, 26T, 31H, 31K)

4-wheel ABS

Rear auxiliary springs (26T, 31H, 31K)

Trailer hitch⁶ 7,500-lb. drawbar/500-lb. maximum vertical tongue weight

Stainless Steel wheel liners and valve extenders

OPTIONAL EQUIPMENT

Ford E450 Chassis 350-hp 7.3L V8 Premium Engine, TorqShift 6-speed automatic transmission w/overdrive, 210-amp. alternator (22M, 22R)

Hydraulic leveling jacks (front and rear) (26T, 31H, 31K)

Electric stabilizing jacks (22M, 22R, 25B)

Spare tire

Cab Conveniences

Cab seats armrests, fixed lumbar support, and multi-adjustable slide/recline

3-point seat belts

Airbags driver and passenger

12-volt powerpoint

Power steering w/tilt and cruise control

Power door locks

Sunvisors

Radio/Rearview monitor system w/integrated 8.95" multi-function touchscreen monitor and rear color camera, Bluetooth®, Apple CarPlay®, Android Auto™ and Sirius XM® ready (requires available receiver w/antenna upgrade)

Mirrors w/defrost, remote and video camera

Cab mat

Remote keyless entry

Auto headlight control

Electronic stability control

Hill start assist

Traction control

Adaptive cruise control

Automatic emergency braking

Auto high beam control

Distance alert

Driver monitoring

Forward collision warning

Lane departure warning

Post-collision braking

Tire pressure monitoring

OPTIONAL EQUIPMENT

Swivel cab seat pedestal (31K) (driver and passenger)

Interior

Amplified digital HDTV antenna

MCD® Roller Shades (lounge, dinette, and bedroom)

Mini blinds (galley/bath)

Systems monitor panel

Roof vent (bedroom and front bunk area)

Front wraparound curtain

Tinted windows

Vinyl ceiling

USB charger (dinette and bedroom)

LED lighting

32" HDTV w/DVD player

Vinyl flooring throughout

Sofa/bed (25B, 26T, 31H, 31K)

Assist bar

Dream dinette table mechanism (25B)

OPTIONAL EQUIPMENT

Dual-glazed, thermo-insulated windows

Sofa sleeper (31K)

Theater seating (26T, 31H, 31K)

Galley

Corian® Solid Surface Countertops

Microwave oven w/touch control

Vented range hood w/light

3-burner range w/glass cover (NA 22R), and oven

Pantry (22M, 26T, 31H, 31K)

Double-door refrigerator/freezer w/woodgrain paneling (22M, 22R, 25B)

Large double-door refrigerator/freezer w/woodgrain paneling (26T, 31H, 31K)

Single stainless steel sink (22R, 26T)

Double stainless steel sink (22M, 25B, 31H, 31K)

Flip-up counter extension (26T)

Bath

Shower 23"x 34" (22M, 22R, 25B)

Shower 24"x 32" (26T)

Shower 26"x 30" (31K)

Shower 26"x 38" (31H)

Lavatory cabinet

Medicine cabinet

Shower w/wall surround

Shower door w/textured glass (31K)

Shower door w/retractable screen (22M, 22R, 25B, 26T, 31H)

Flexible showerhead

Skylight

Powered roof vent

Toilet w/foot pedal

Tissue holder

Robe hook(s)

Towel bar(s)



Bedroom

Double bed w/foam mattress, headboard and mattress cover (22R, 25B)

Queen bed w/foam mattress, headboard, and mattress cover (22M, 26T, 31H, 31K)

Bunk beds w/covered foam mattresses, mattress covers, storage compartment, and privacy curtains (31H)

Wardrobe (22M, 22R, 25B, 26T)

24" HDTV

Exterior

Premium high-gloss fiberglass skin

Porch light w/interior switch

Running boards

Large lighted trunk storage compartment

Powered patio awning w/LED lighting

Molded front cap

Ladder

Heating & Cooling

20,000 BTU furnace (22M, 22R, 25B)

30,000 BTU furnace (26T, 31H, 31K)

15,000 BTU air conditioner

Electrical System

AC/DC load center, 55-amp. converter/charger

30-amp. power cord

TV jack and AC receptacle near entrance door

Coach battery disconnect system

Automatic dual-battery charge control

4,000-watt Cummins Onan® Microquiet generator

2-deep cycle, Group 24 battery

Auxiliary start circuit

AC/DC 1,000-watt inverter

Plumbing System

Pressurized city water hookup w/tank fill

On-demand water pump

6-gallon LP water heater w/electronic ignition

Heated drainage system

Holding tank flushing system (Black tank only)

Permanent-mount LP tank w/gauge

Safety

LP, smoke, and carbon monoxide detectors

Fire extinguisher

Ground fault interrupter

Child seat tether anchor

Warranty⁷

12-month/15,000-mile basic limited warranty⁸

36-month/36,000-mile limited warranty on structure⁸

10-year limited parts-and-labor warranty on roof skin⁸

FOOTNOTES

1. The height of each model is measured to the top of the tallest standard feature and is based on the curb weight of a typically equipped unit. The actual height of your vehicle may vary by several inches depending on chassis or equipment variations. Contact your dealer for further information.
2. Floorplans feature a wide-body design - over 96". You should be aware that some states restrict access on some or all state roads to 96" in body width. You should confirm the road usage laws in the states of interest to you.
3. The load capacity of your motorhome is designated by weight, not by volume, so you cannot necessarily use all available space when loading your motorhome.
4. Capacities are based on measurements prior to tank installation. Slight capacity variations can result.
5. Capacities shown are the tank manufacturer's listed water capacity (W.C.). Actual filled propane capacity is 80% of listing due to overfilling prevention device on tank.
6. Actual towing capacity is dependent on your particular loading and towing circumstances which includes the GVWR, GAWR, and GCWR as well as adequate trailer brakes. Refer to the chassis operator's manual of your motorhome for further towing information.
7. See separate chassis warranty.
8. See your dealer for complete warranty information.

Not all items available in combination. See dealer for details.

Because features, specifications, equipment, and options may vary from those highlighted in this brochure, the buyer is responsible for confirming with the dealer the features, specifications, equipment, and options included on their specific vehicle. In addition, Winnebago's program of continuous product improvement may result in changes to vehicle specifications, equipment, model availability, and price without notice.