

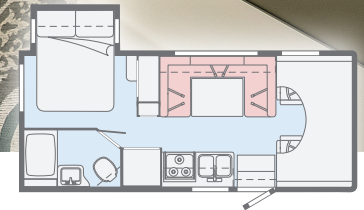


**SPIRIT**

**WINNEBAGO**



*On the Cover: Tuscan Gold Standard Graphics with Front Cap  
Interior: Inspire with Coffee-Glazed Vienna Maple Cabinetry*



This brochure features the Spirit 22M Floorplan

An adventurous Spirit can take you anywhere

From the new 22M with a U-shaped dinette that converts to a cozy bed, all the way up to the triple slideout 31D, there's a Winnebago® Spirit® that's just right for you. Every Spirit features a comfortable lounge/dining area, private rear bedroom, and – thanks to the

included cabover bunk – a variety of sleeping options for family and friends. Each Spirit also includes a large rear trunk, energy-efficient LED lighting, HDTV with DVD player, patio awning, and much more, making the Spirit the smart choice for families on the go.

# Spirit | Lounge

Family gatherings are easy and comfortable on board the Spirit. After dinner, game night comes alive around the U-shape dinette (22M, 22R, 26A, 31K). The standard dinette and sofa bed on the 25B, 31D and 31G are ideal for curling up with a book, catching a movie on the 32" HDTV with a DVD player, or just hanging out. Choose the available swivel cab seats (26A, 31D, 31K) for even more seating options. Each of the Spirit's interior décor collections include Primera® by Ultrafabrics® seat covers for comfort and durability.





Overhead Bed



Lounge HDTV



Overhead Bed Ladder



Pleated Shades

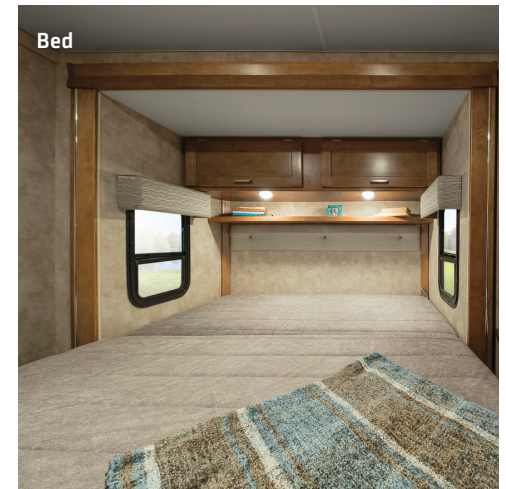
# Spirit | Galley

Whether you're crafting a gourmet masterpiece for two or feeding the hungry hordes, the Spirit's galley is ready to serve, thanks to the included three-burner range with oven, microwave, two-door refrigerator/freezer and double-bowl sink (NA 22R). Available upgrades include a microwave/convection oven (26A, 31D, 31G, 31K), four-door refrigerator/freezer with an icemaker (31K), and a large double-door refrigerator/freezer (26A, 31D, 31G, 31K). And the Spirit's Premium Package (26A, 31D, 31G, 31K) enhances the galley's look and functionality, with a Corian® countertop, stainless steel undermount sink, and Corian sink covers.





Every Spirit offers a variety of comfortable sleeping options, beginning with the multi-layer queen bed with memory foam (double in the 22R and 25B) in the private rear bedroom. Family members or friends can take advantage of the overhead bed above the cab, as well as a dinette and/or sofa/bed that quickly converts to a cozy bed, or even bunk beds on the 31G. Every Spirit floorplan includes a spacious shower with flexible shower head, making cleanup after a busy day a refreshing treat.





Bathroom



Vanity Sink



Shower



The user-friendly cab makes it easy to take charge of your Spirit. Cab seats with armrests and lumbar support are fully adjustable for your comfort. An available backup camera and exterior mirrors with defrost aid in backing up. Once you're at camp, swivel the cab seats on the 26A, 31D and 31K for added seating capacity in the lounge.





Powered Patio Awning

The Spirit's attractive high-gloss fiberglass exterior is available in two standard and one deluxe graphics packages. To keep things powered up while you're off the grid, a 4,000-watt Cummins Onan® generator is standard, as are the patio awning, porch light, running boards and a lighted trunk storage compartment. Exterior options include a powered patio awning with LED lighting and, when it's too nice to stay inside, an available exterior entertainment center with an HDTV, DVD player, and AM/FM radio on the 31D.



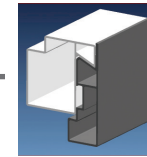
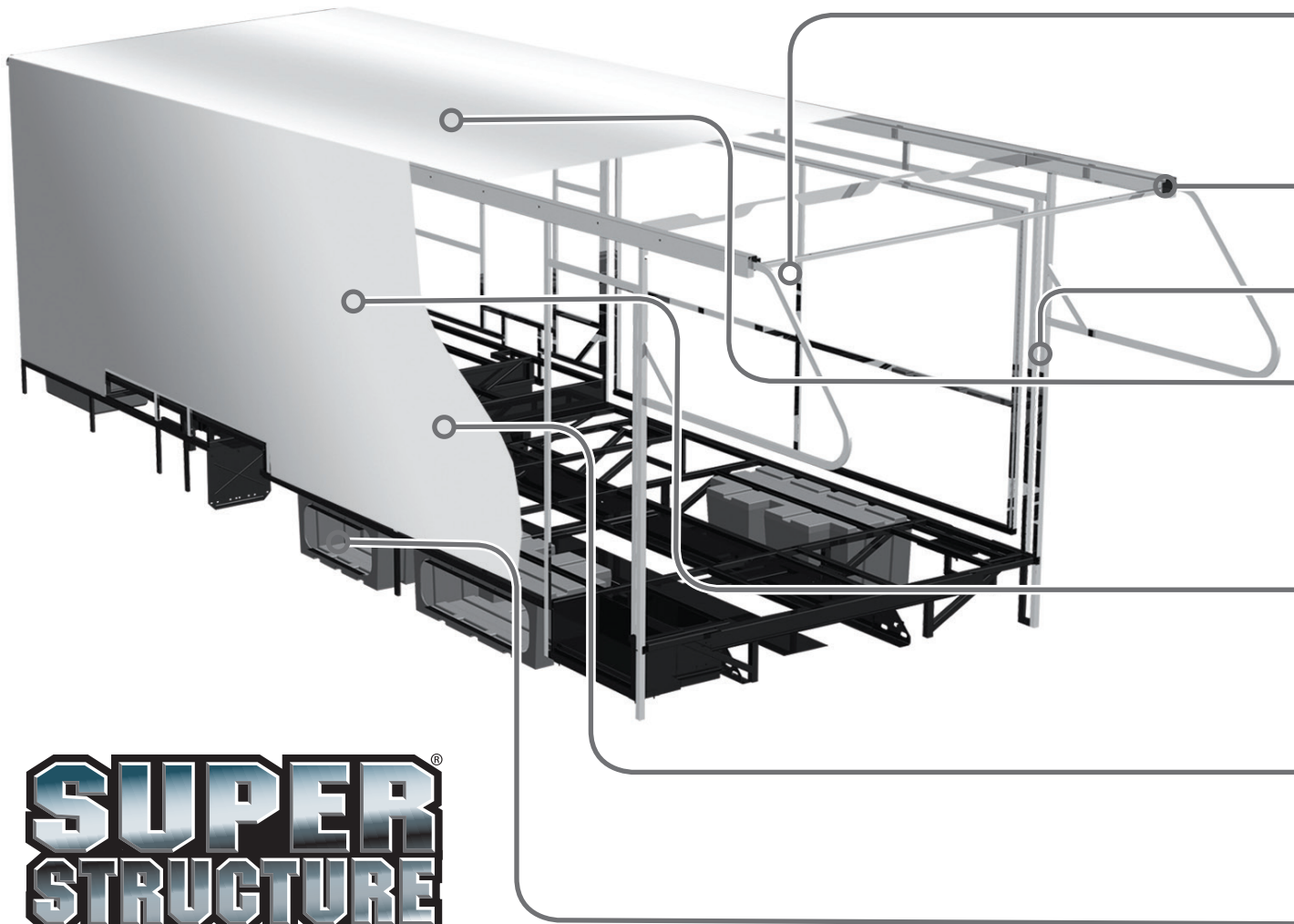
Running Board



Awning LED Lights



Exterior Storage



**Interlocking Joints** Specially engineered interlocking joints connect the floor, sidewalls, and roof where competitors often rely on simple screws to bear the weight.



**Laser-Cut Tubing** Precision laser cutters create precise joints in structural steel that are stronger and require less welding.

**Solid Framework** Structural extruded aluminum creates an extremely strong and solid frame.

**Fiberglass Roof** The one-piece fiberglass roof is backed by a 10-year limited parts-and-labor roof skin warranty.

**Thermo-Panel® Sidewalls** By layering fiberglass and high-density block foam insulation with welded aluminum support structures, we create some of the industry's strongest, most durable, and lightweight sidewalls..

**Embedded Steel** Metal substructures embedded into the sidewall provide solid attachment points to keep cabinets and appliances mounted securely in place.

**E-coating** An electrodeposition coating helps protect critical steel components.

**SUPER  
STRUCTURE**

BUILT TO LAST

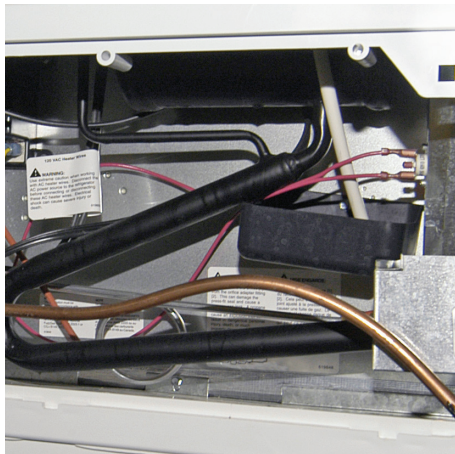
From our smallest Class C coach to our largest diesel-pusher, coaches are built to Winnebago's legendary SuperStructure® construction design. It's a process developed and refined over more than 60 years of building some of the strongest, most durable coaches in the industry.

**TESTING** Before rolling out of our factories, every coach undergoes an extensive 113-point inspection. Each coach also passes a high-pressure water test that simulates rain at a rate of 50-inches per hour to check for leaks. During the design process, our computer simulations, physical testing center, and rigorous test track ensure each model is built to last.



Visit [BetterBuiltRVs.com](http://BetterBuiltRVs.com) to gain real insight into what goes into a Winnebago motorhome.

**DETAILS** At Winnebago, we treat the features you can't see with the same care as the ones you can. Look in the access panels of some of our competitors' coaches and you'll see loose insulation and wires haphazardly strewn about. Winnebago maintains a clean fit and finish throughout so your coach will last for the long haul.



**BUILT IN-HOUSE** We process and finish key aluminum parts. We rotocast our own plastic components. In fact, we manufacture most of our own parts so they are designed to fit the space, rather than fitting the space to an awkward off-the-shelf component size.



**SUPER  
STRUCTURE**  
BUILT TO LAST

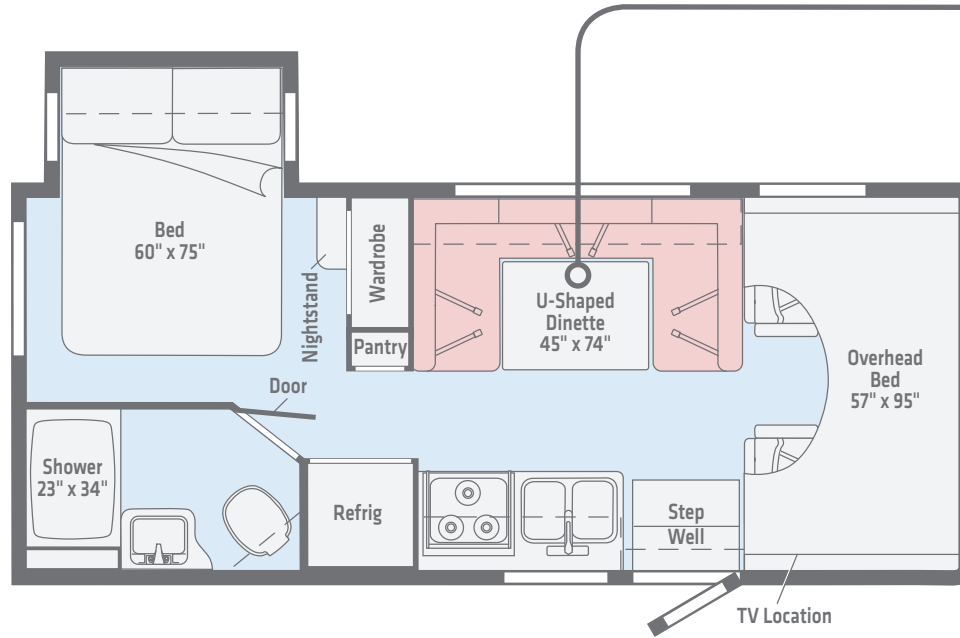
**TAKE A TOUR** We're proud of our processes, state-of-the-art facilities, and the people who make Winnebago number one. We invite you to visit our complex in Forest City, Iowa, for a firsthand look at the dedication and technology behind every motorhome we build.



Call (641) 585-6936 or (800) 643-4892 or visit us online at [WinnebagoInd.com/company/visit](http://WinnebagoInd.com/company/visit) for more information.

# NEW 22M

The slideout provides added room to the rear master suite, while the U-shaped dinette quickly converts to a comfortable bed for added sleeping capacity.



Primera

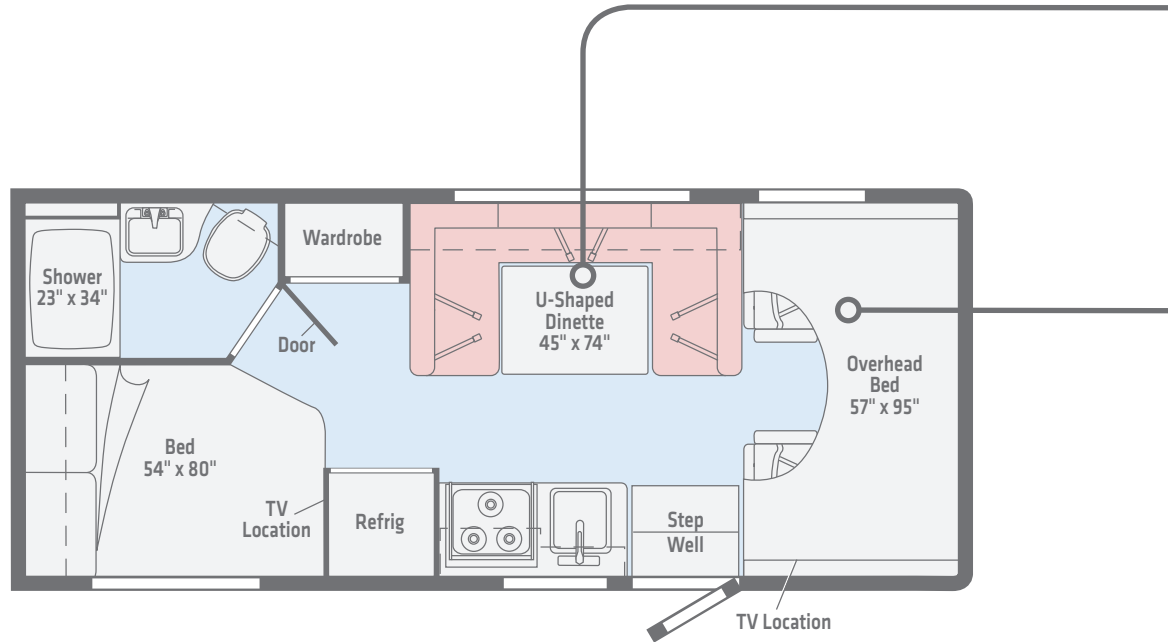
Vinyl

Length 24'2"  
 Ext. Storage (cu. ft.) 44.5  
 Seating 5

*Dimensions shown are for sleeping and shower space only and may vary due to styling differences. Dashed lines denote overhead storage areas. Floorplans and specifications are also available online at [WinnebagoInd.com](http://WinnebagoInd.com).*

# 22R

Located opposite the galley, the U-shaped dinette highlights this floorplan, and brings extra coziness to family dinners and game nights.



Primera



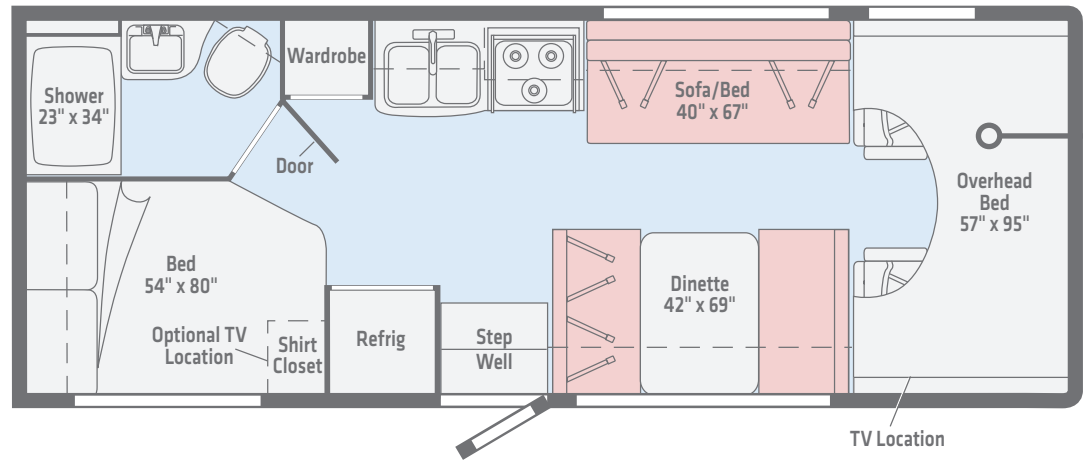
Vinyl

**Length** 23'10"  
**Ext. Storage** (cu. ft.) 60.4  
**Seating** 5

*Dimensions shown are for sleeping and shower space only and may vary due to styling differences. Dashed lines denote overhead storage areas. Floorplans and specifications are also available online at [WinnebagoInd.com](http://WinnebagoInd.com).*

# 25B

Several people can enjoy all the comforts of home in a floorplan that lives much bigger than its compact size, thanks to the sofa/bed and overhead bed.

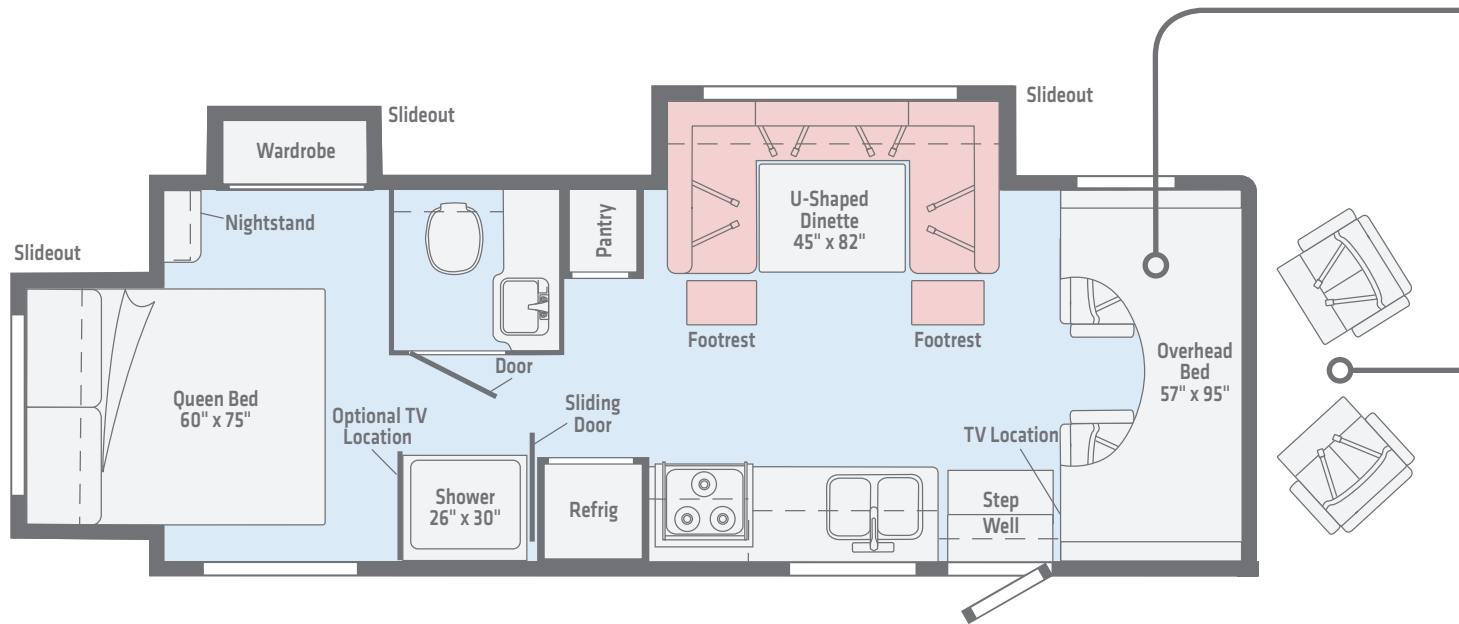


**Length** 26'2"  
**Ext. Storage** (cu. ft.) 73.1  
**Seating** 6

*Dimensions shown are for sleeping and shower space only and may vary due to styling differences. Dashed lines denote overhead storage areas. Floorplans and specifications are also available online at [WinnebagoInd.com](http://WinnebagoInd.com).*

# 26A

The spacious, functional living area is matched by the large private master bedroom with walk-around queen bed, thanks to three slideouts and the versatile U-shaped dinette with footrests.



Primera



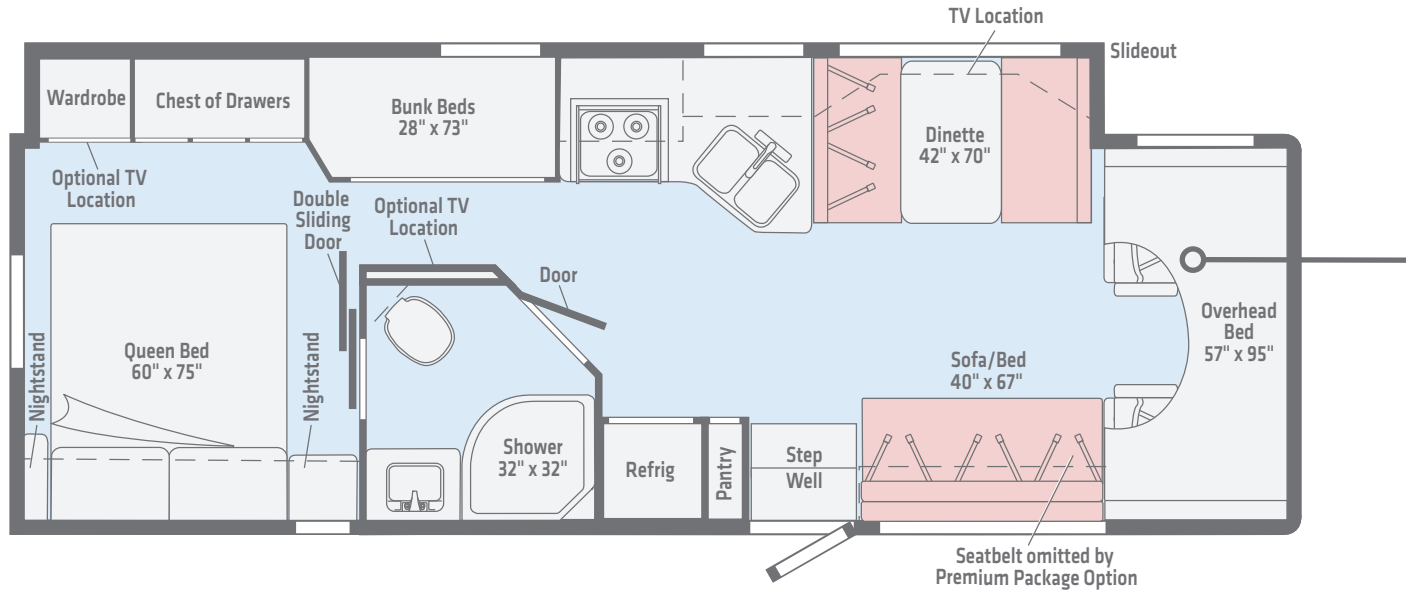
Vinyl

**Length** 27'1"  
**Ext. Storage** (cu. ft.) 45  
**Seating** 6

*Dimensions shown are for sleeping and shower space only and may vary due to styling differences. Dashed lines denote overhead storage areas. Floorplans and specifications are also available online at [WinnebagoInd.com](http://WinnebagoInd.com).*

# 31G

The full-wall slideout adds living space throughout the coach, while bunk beds and an available Exterior Tailgate Package make the 31G a big hit with growing families.

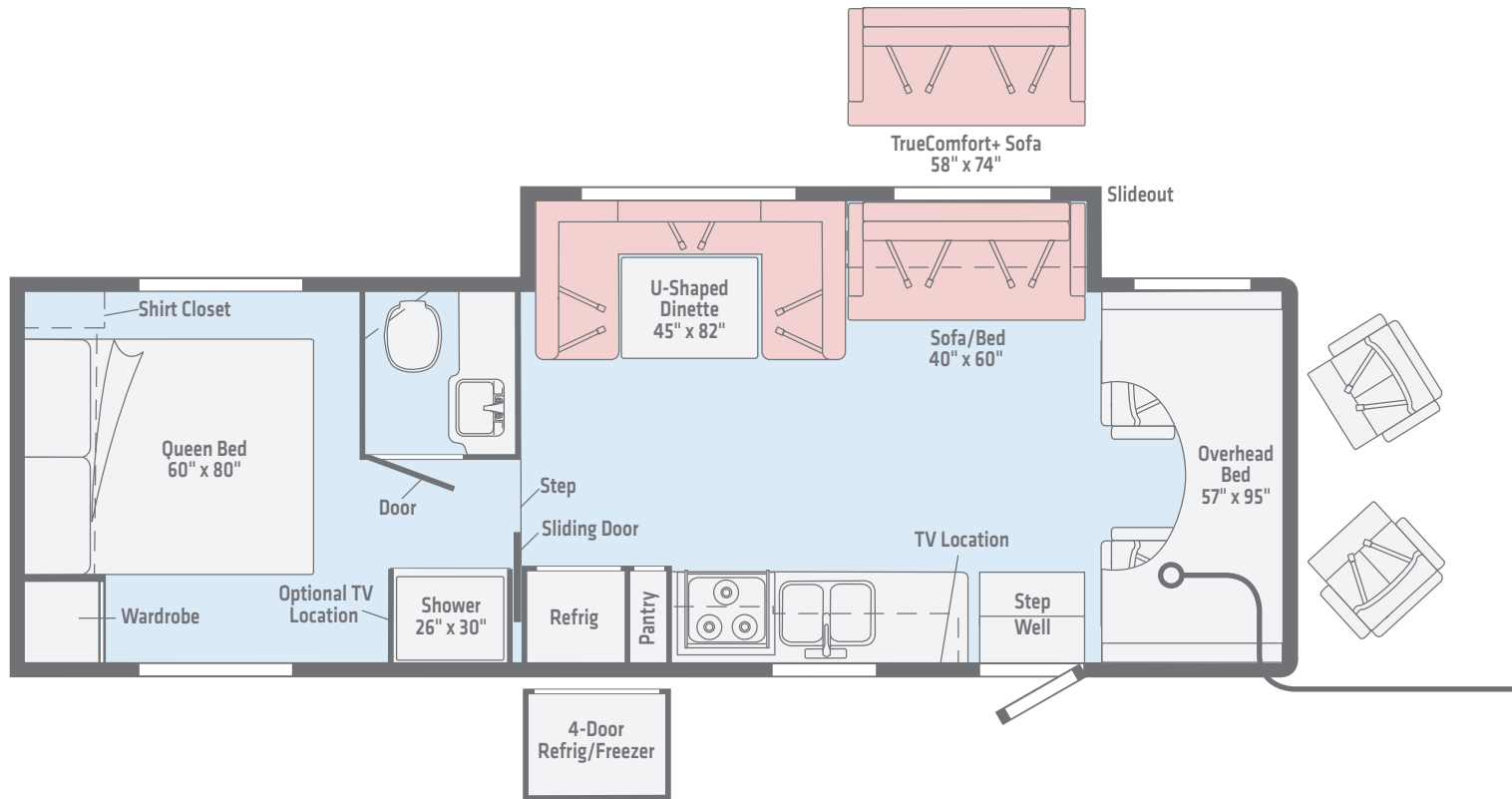


**Length** 32'9"  
**Ext. Storage** (cu. ft.) 80.7  
**Seating** 7 (6 with Premium Package)

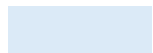
*Dimensions shown are for sleeping and shower space only and may vary due to styling differences. Dashed lines denote overhead storage areas. Floorplans and specifications are also available online at [WinnebagoInd.com](http://WinnebagoInd.com).*

# 31K

A split bath sets off the roomy master bedroom, while a U-shaped dinette plus options like a 4-door refrigerator/freezer and TrueComfort+ Sofa make the 31K a perennial favorite.



Primera



Vinyl

**Length** 32'9"  
**Ext. Storage** (cu. ft.) 108.3  
**Seating** 7

*Dimensions shown are for sleeping and shower space only and may vary due to styling differences. Dashed lines denote overhead storage areas. Floorplans and specifications are also available online at [WinnebagoInd.com](http://WinnebagoInd.com).*

Available Front Cap



**Polar Tuscan Gold**  
STANDARD GRAPHICS

Available Front Cap



**Tuscan Gold**  
STANDARD GRAPHICS

Available Front Cap



**Bronze Mist**  
DELUXE GRAPHICS

Choose from four collections and three wood finishes.

## Legend - Dealer Stock Only



Primera by Ultrafabrics



Primera Accent



Feature Fabric



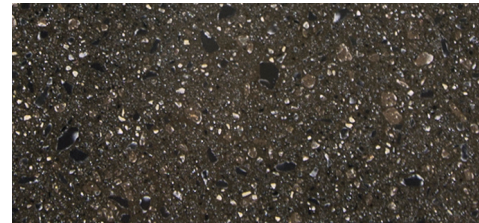
Vinyl Flooring



Bedspread



Bed Cover



Corian Countertop



Laminate Countertop

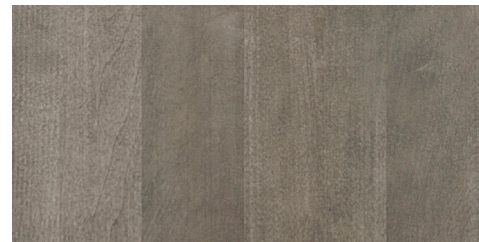
## Woods



Coffee-Glazed Vienna Maple



Honey Cherry



Glazed Driftwood

Winnebago® reserves the right to change décor materials and specifications without notice or obligation.

Choose from four collections and three wood finishes.

# Inspire



Primera by Ultrafabrics



Primera Accent



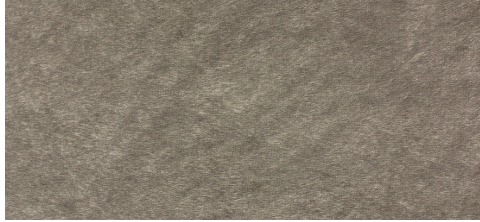
Feature Fabric



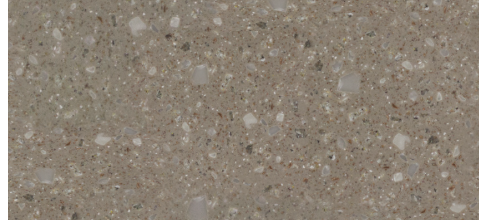
Vinyl Flooring



Bedsread



Bed Cover



Corian Countertop



Laminate Countertop

# Woods



Coffee-Glazed Vienna Maple



Honey Cherry



Glazed Driftwood  
*Dealer Stock Only*

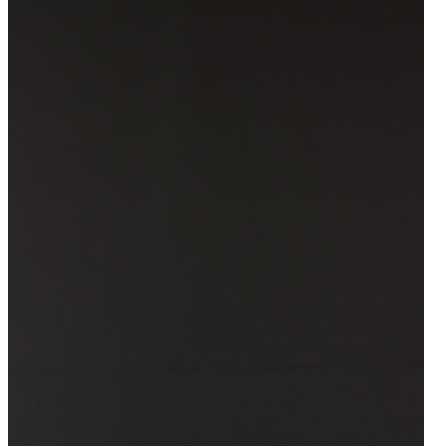
Winnebago® reserves the right to change décor materials and specifications without notice or obligation.

Choose from four collections and three wood finishes.

## Pinnacle



Primera by Ultrafabrics



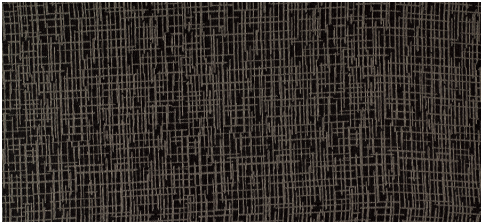
Primera Accent



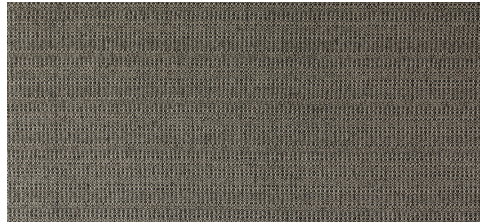
Feature Fabric



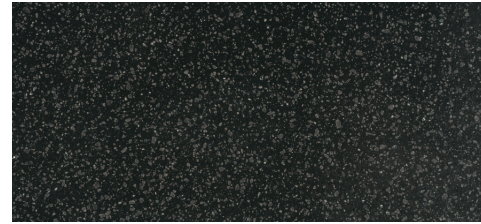
Vinyl Flooring



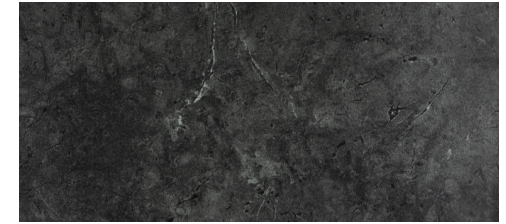
Bedspread



Bed Cover



Corian Countertop



Laminate Countertop

## Woods



Coffee-Glazed Vienna Maple



Honey Cherry

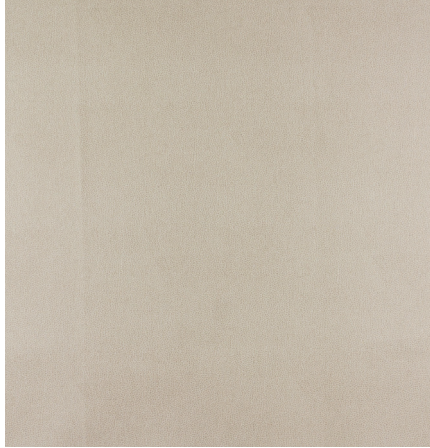


Glazed Driftwood  
*Dealer Stock Only*

Winnebago® reserves the right to change décor materials and specifications without notice or obligation.

Choose from four collections and three wood finishes.

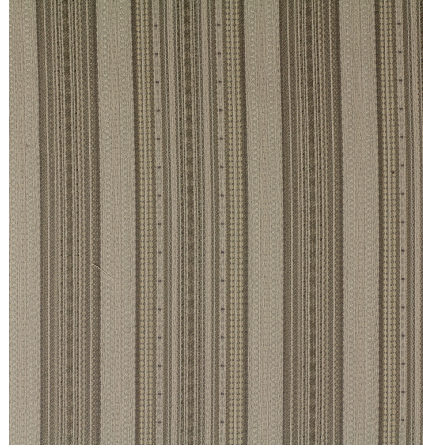
## Cascade - Dealer Stock Only



Primer by Ultrafabrics



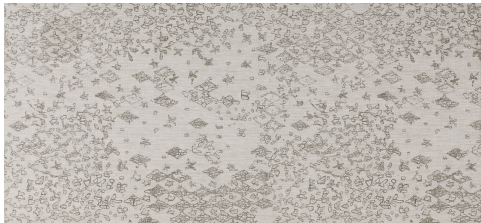
Primer Accent



Feature Fabric



Vinyl Flooring



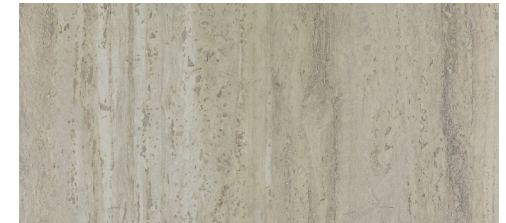
Bedspread



Bed Cover



Corian Countertop



Laminate Countertop

## Woods



Coffee-Glazed Vienna Maple



Honey Cherry



Glazed Driftwood

Winnebago® reserves the right to change décor materials and specifications without notice or obligation.

## The Holcombes

Peter, Kathy, and Abby have been full-time RVing since 2014. Using photos and videos shot by Peter, a professional photographer, the family has documented their many adventures around the continent including hiking, paddling, climbing, canyoneering, fishing, and more. All from the comfort of their Winnebago.

You can follow their journey at [WinnebagoLife.com](http://WinnebagoLife.com). You'll also find hundreds of other great stories from GoLife's outstanding contributors, along with how-to articles, gear reviews, RVing tips, and much more.



To learn more about the Holcombes' adventures, visit:



[WinnebagoLife.com/about](http://WinnebagoLife.com/about)



Weights & Measures	22M	22R	25B	26A	31D	31G	31K
<b>Length</b>	24'2"	23'10"	26'2"	27'1"	32'9"	32'9"	32'9"
<b>Exterior Height<sup>1</sup></b>	11'	11'	11'	11'1"	11'1"	11'1"	11'1"
<b>Exterior Width<sup>2</sup></b>	8'5.5"	8'5.5"	8'5.5"	8'5.5"	8'5.5"	8'5.5"	8'5.5"
<b>Exterior Storage<sup>3</sup> (cu. ft.)</b>	44.5	60.4	73.1	45	95	80.7	108.3
<b>Awning Length</b>	14'	14'	17'	18'	17'	19'	20'
<b>Interior Height</b>	6'10"/6'5.5"***	6'10"	6'10"	6'10"/6'5.5"***	6'10"/6'5.5"***	6'10"/6'5.5"***	6'10"/6'5.5"***
<b>Interior Width</b>	8'	8'	8'	8'	8'	8'	8'
<b>Freshwater Tank Capacity<sup>4</sup> (gal.)</b>	40	40	40	40	44	44	44
<b>Water Heater Capacity (gal.)</b>	6	6	6	6	6	6	6
<b>Holding Tank Capacity - Black/Gray<sup>4</sup> (gal.)</b>	40/45	21/24	21/26	35/39	37/30	37/57	30/30
<b>LP Capacity<sup>5</sup> (gal.)</b>	18	18	18	18	18	18	18
<b>Fuel Capacity (gal.)</b>	55	55	55	55	55	55	55
<b>GCWR<sup>6</sup> (lbs.)</b>	18,500 <sup>A</sup> /22,000 <sup>B</sup>	18,500 <sup>A</sup> /22,000 <sup>B</sup>	18,500 <sup>A</sup> /22,000 <sup>B</sup>	22,000 <sup>B</sup>	22,000 <sup>B</sup>	22,000 <sup>B</sup>	22,000 <sup>B</sup>
<b>GVWR (lbs.)</b>	11,500 <sup>A</sup> /14,500 <sup>B</sup>	11,500 <sup>A</sup> /14,500 <sup>B</sup>	11,500 <sup>A</sup> /14,500 <sup>B</sup>	14,500 <sup>B</sup>	14,500 <sup>B</sup>	14,500 <sup>B</sup>	14,500 <sup>B</sup>
<b>GAWR - Front (lbs.)</b>	4,600 <sup>A</sup> /5,000 <sup>B</sup>	4,600 <sup>A</sup> /5,000 <sup>B</sup>	4,600 <sup>A</sup> /5,000 <sup>B</sup>	5,000 <sup>B</sup>	5,000 <sup>B</sup>	5,000 <sup>B</sup>	5,000 <sup>B</sup>
<b>GAWR - Rear (lbs.)</b>	7,800 <sup>A</sup> /9,600 <sup>B</sup>	7,800 <sup>A</sup> /9,600 <sup>B</sup>	7,800 <sup>A</sup> /9,600 <sup>B</sup>	9,600 <sup>B</sup>	9,600 <sup>B</sup>	9,600 <sup>B</sup>	9,600 <sup>B</sup>
<b>Wheelbase</b>	158"	158"	182"	190"	220"	220"	220"
<b>Seating Capacity</b>	5	5	6	6	7	6*/7	7

\*Included with Premium Package \*\*Rear of Coach <sup>A</sup> Ford E350 Chassis <sup>B</sup> Ford E450 Chassis

## Optional Package Upgrades

**Convenience Package** front bunk ladder, bunk privacy curtain, additional deep-cycle, Group 24 battery, glass shower door (NA 31G), rear ladder, Radio/Rearview Monitor System (DVD receiver with 6.2" LCD color touch screen, Bluetooth, Siri Eyes Free, SiriusXM ready, Spotify, AppRadio One, rear color camera), stainless steel wheel liners and valve extenders, black tank flushing system, TrueLevel™ monitoring system, full mosaic tile backsplash, recessed range w/conventional burners and glass cover (NA 22R)

**Premium Package** (26A, 31D, 31G, 31K) Corian® countertop, galley w/stainless steel undermount sink and Corian sink cover, Primera cab seat covers, 40" HDTV upgrade (31K), headboard upgrade (NA 26A), Dream Dinette™ table mechanism (31D, 31G), bedspread (NA 26A) w/pillow shams and

fillers, power ventilator w/rain cover, electric lift, remote, exhaust airflow, DSI gas/electric water heater, dash appliqué, MCD solar/blackout roller shades (MCD blackout roller shades in bedroom), porcelain toilet w/sprayer, stainless steel bathroom sink, single-control faucets, window treatment upgrade, sofa pillows (NA 26A), frosted mirror refrigerator inserts, frosted mirror overhead door inserts, automatic generator change over switch

**Exterior Tailgate Package** (31G) 32" HDTV, stereo w/remote, AM/FM radio, DVD player w/remote, two exterior speakers, radio antenna, exterior wash station w/lighted pump switch, coiled water hose, quick-disconnect and sprayer head, refrigerator (2.6 cu. ft.), cabinet, LP QuickConnect, 110 V/AC receptacle

## Chassis

**Ford® E350 Chassis** 305-hp 6.8L SEFI Triton V10 engine, TorqShift 6-speed automatic transmission w/overdrive, 155-amp. alternator (22M, 22R, 25B)

**Ford E450 Chassis** 305-hp 6.8L SEFI Triton V10 engine, TorqShift 6-speed automatic transmission w/overdrive, 155-amp. alternator (26A, 31D, 31G, 31K)

### 4-wheel ABS

**Rear auxiliary springs** (31G)

**Trailer hitch<sup>6</sup>** 7,500-lb. drawbar/500-lb. maximum vertical tongue weight (NA 31D, 31G), 350-lb. maximum vertical tongue weight (31D, 31G)

### OPTIONAL EQUIPMENT

**Ford E450 Chassis** 305-hp 6.8L SEFI Triton V10 engine, TorqShift 6-speed automatic transmission w/overdrive, 155-amp. alternator (22M, 22R, 25B)

**Rear auxiliary springs** (26A, 31D, 31K)

**Hydraulic leveling jacks** (front and rear) (31D, 31G, 31K)

**Electric stabilizing jacks** (22M, 22R, 26A) (25B w/E450 Chassis)

**Spare tire** (NA 25B w/E350 Chassis)

## Cab Conveniences

**Cab seats** armrests, fixed lumbar support, and multi-adjustable slide/recline

### 3-point seat belts

**Airbags driver and passenger**

### 12-volt powerpoint

**Power steering** w/tilt and cruise control

### Power door locks

### Sunvisors

**Manual mirrors** w/pivoting arms

### Cab mat

### OPTIONAL EQUIPMENT

**Swivel cab seat pedestal** (26A, 31D, 31K) (driver and passenger)

**Mirrors** w/defrost, remote and video camera

## Interior

**Amplified digital HDTV antenna**

**Pleated night shades** (lounge, dinette, and bedroom)



**Mini blinds** (galley, bath)

**Systems monitor panel**

**Roof vent** (bedroom and front bunk area)

**Blackout cab divider curtain** (22M, 22R, 25B, 31G)

**Front wraparound curtain** (26A, 31D, 31K)

**Tinted windows**

**Vinyl ceiling**

**USB charger** (dinette and bedroom)

**LED lighting**

**32" HDTV w/DVD player**

**Vinyl flooring throughout**

**Assist bar**

### OPTIONAL EQUIPMENT

**Dual-glazed, thermo-insulated windows** (NA 25B w/E350 Chassis)

**Sofa sleeper** (31D, 31K)

## Galley

**Microwave oven** w/touch control

**Vented range hood** w/light

**2-door refrigerator/freezer**

**Pantry** (NA 22R, 25B)

### OPTIONAL EQUIPMENT

**Microwave/convection oven** w/touch control (26A, 31D, 31G, 31K)

**4-door refrigerator/freezer** w/icemaker (31K)

**Large double-door refrigerator/freezer** w/woodgrain paneling (26A, 31D, 31G, 31K)

## Bath

**Shower** 23"x34" (22M, 22R, 25B)

**Shower** 26"x30" (26A, 31K)

**Shower** 26"x38" (31D)

**Shower** 32"x32" (31G)

**Shower door** (31G)

**Flexible showerhead**

**Skylight**

**Towel ring(s)**

**Powered roof vent**

**Toilet** w/foot pedal

**Tissue holder**

**Robe hook(s)**

**Towel bar(s)** (31D, 31G)

## Bedroom

**Double bed** w/2" foam mattress topper and mattress cover (22R, 25B)

**Queen bed** w/foam mattress and mattress cover (22M, 26A)

**Queen bed** w/foam mattress and bedspread (22M, 31D, 31G, 31K)

**Headboard** (NA 26A)

**Bunk beds** w/covered foam mattresses, mattress covers, storage compartment, and privacy curtains (31G)

### OPTIONAL EQUIPMENT

**24" HDTV**

**Bunk bed 24" HDTV** (31G)

## Exterior

**Premium high-gloss fiberglass skin**

**Porch light** w/interior switch



**Running boards**

**Large lighted trunk storage compartment**

**Patio awning**

### OPTIONAL EQUIPMENT

**Powered patio awning** w/LED lighting

**Molded front cap** (NA 25B w/E350 Chassis)

**Entertainment center** w/HDTV, DVD player, AM/FM radio, speakers (31D)

## Heating & Cooling

**20,000 BTU furnace** (22M, 22R, 25B)

**30,000 BTU furnace** (26A, 31D, 31G, 31K)

**Coleman®-Mach® 15 A/C**

## Electrical System

**AC/DC load center, 55-amp. converter/charger**

**30-amp. power cord**

**TV jack and AC receptacle near entrance door**

**Deep-cycle, Group 24 battery**

**Coach battery disconnect system**

**Automatic dual-battery charge control**

**4,000-watt Cummins Onan® Microquiet™ generator**

**Auxiliary start circuit**

### OPTIONAL EQUIPMENT

**AC/DC, 1,000-watt inverter** w/remote panel

## Plumbing System

**Pressurized city water hookup** w/tank fill

**On-demand water pump**

**6-gallon LP water heater** w/electronic ignition

**Permanent-mount LP tank** w/gauge

### OPTIONAL EQUIPMENT

**Heated drainage system**

## Safety

**LP, smoke, and carbon monoxide detectors**

**10 BC fire extinguisher**

**Ground fault interrupter**

**Child seat tether anchor**

## Warranty<sup>7</sup>

**12-month/15,000-mile basic limited warranty<sup>8</sup>**

**36-month/36,000-mile limited warranty on structure<sup>8</sup>**

**10-year limited parts-and-labor warranty on roof skin<sup>8</sup>**

### FOOTNOTES

- The height of each model is measured to the top of the tallest standard feature and is based on the curb weight of a typically equipped unit. The actual height of your vehicle may vary by several inches depending on chassis or equipment variations. Please check with your dealer for further information.
- Floorplans feature a wide-body design - over 96" in making your purchase decision, you should be aware that some states restrict access on some or all state roads to 96" in body width. Before making your purchase decision, you should confirm the road usage laws in the states of interest to you.
- The load capacity of your motorhome is designated by weight, not by volume, so you cannot necessarily use all available space when loading your motorhome.
- Capacities are based on measurements prior to tank installation. Slight capacity variations can result due to installation applications.
- Capacities shown are tank manufacturer's listed water capacity (W.C.). Actual filled LP capacity is 80% of listing due to overfilling prevention device on tank.
- Actual towing capacity is dependent on your particular loading and towing circumstances which includes the GVWR, GAWR, and GCWR as well as adequate trailer brakes. Please refer to the Operator's Manual of your vehicle for further towing information.
- See separate chassis warranty.
- See your dealer for complete warranty information.

NA Not Available

Not all items available in combination. See dealer for details.

Winnebago's® continuing program of product improvement makes specifications, equipment, model availability, and prices subject to change without notice. Published content reflects the most current product information at time of printing. Please consult your dealer for individual vehicle features and specifications.