

# Fuse

# WINNEBAGO



## Why Fuse?

- Two functional floorplans
- Convenience Package upgrade
- Soft-touch Primera furniture
- Available bike racks
- Flex Bed System
- Exterior speaker system
- All-new Ford® Transit diesel cutaway chassis
- Contemporary, fun, and affordable with features that support active owners
- Unique and modern interior
- Optional solar panel/battery charger system
- Powered, armless patio awning with LED lighting



On the Cover: 23A Lunar Sky Deluxe Graphics

23A Blueprint with Glazed Driftwood Cabinetry

## Get Moving

The all-new Winnebago Fuse™ was built from the ground up to cater to your active lifestyle. It starts with the new Ford® Transit diesel cutaway chassis and its aggressive nose styling that begs you to cut through the wind on the open road, offering some of the best ergonomics and visibility you will find in a Class C

motorhome. Available bike racks and sizable rear storage accommodate life on the go, while a private bedroom and overhead entertainment center are waiting for you when the day is done. If you have a spark for life, the Winnebago Fuse is waiting. Get yourself behind the wheel and let's get moving.

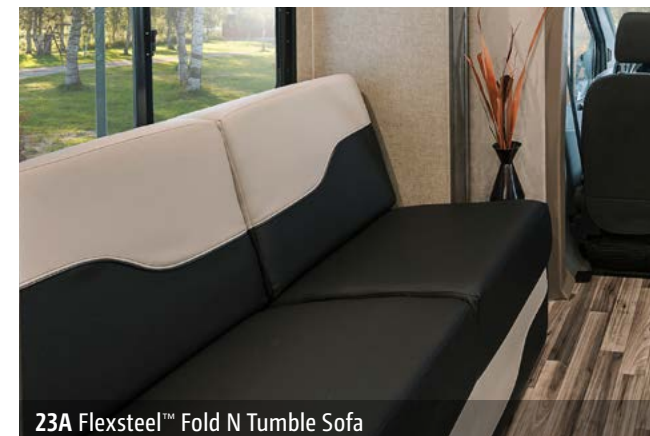


### Recognized Quality

The Recreation Vehicle Dealer Association annually rates RV manufacturers and awards the Quality Circle Award to manufacturers that provide exceptional products, service and support. Winnebago Industries is proud to be the only manufacturer that has received this award every year since its inception.



The Fuse makes fun affordable, starting with a lounge that is comfortable, contemporary, and designed to fit your lifestyle. The entertainment center over the cab houses an HDTV and CD/DVD stereo system. You'll always have a great view from the Fold N Tumble sofa in the 23A or the bench seats in the 23T, which quickly convert into comfortable sleeping spaces when the show is over.



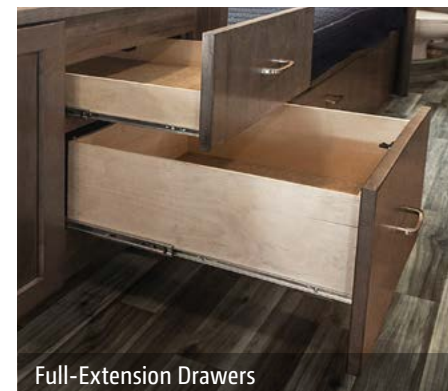
The galley captures the contemporary design of the Fuse with a decorative backsplash, indirect lighting, and a stainless steel sink. A full complement of appliances includes a touch-control microwave oven, range top, and double-door refrigerator/freezer. The cabinetry comes in your choice of Washed Maple or Glazed Driftwood from components that are made in the U.S.A.



23A Refrigerator



23A Galley



Full-Extension Drawers



23A Glass Range Covers



23A Microwave/Convection Oven

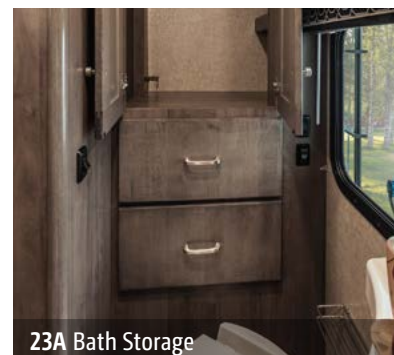


23A Bedroom

Flexible sleeping spaces make the Fuse an ideal motorhome for those traveling alone, with family, or with friends. The 23T features a large queen bed in a rear slideout. The 23A employs the versatility of the Flex Bed System to offer two twin beds that quickly convert into a single queen bed. Both models include a full bath and an available wall-mounted bedroom HDTV.



Skylight



23A Bath Storage



23A Bathroom



23A Shower



Dash

The Ford® Transit chassis is known for its responsive performance and superior visibility. Standard features include a rearview monitor system and cab stereo system with AM/FM, CD player, and a 4" multifunction display with SYNC® capabilities. You can upgrade to the Convenience Package for a swivel passenger seat with booster cushion that becomes part of the lounge when you are parked.



Radio



Cab Seat



Cab Seat Reclined

The Fuse beckons you to spend more time outdoors in the places you enjoy with exterior enhancements such as exterior speakers and the powered patio awning with LED lights. Bring more with you in the rear storage trunk in the 23A; you can even add a bike rack to both models if you want to hit the trails.



23A Powered Patio Awning



Awning LED Lighting



Stainless Steel Wheel Liner



Powered Mirror with Defrost



Exterior Storage



Available Bike Rack



Automatic Entrance Door Step

## Fiberglass Roof

The crowned, one-piece fiberglass roof is backed by a 10-year limited parts-and-labor roof skin warranty.

## Rubber Can't Cut It

Rubber roofs used by competitors can streak and degrade over time.

## Thermo-Panel® Sidewalls

By layering fiberglass and high-density block foam insulation with welded aluminum support structures, we create some of the industry's strongest, most durable and lightweight sidewalls.

**E-Coating** An electrodeposition coating helps protect critical steel components.

**Embedded Steel** Metal substructures embedded into the sidewall provide solid attachment points to keep cabinets and appliances mounted securely in place.

**Solid Framework** Aluminum extruded in our own facility to our exacting standards creates an extremely strong and solid structural framework.

## Laser-Cut Tubing

Precision laser cutters create precise joints in structural steel that are stronger and require less welding.



## Interlocking Joints

Specially engineered interlocking joints connect the floor, sidewalls and roof where competitors often rely on simple screws to bear the weight.



# SUPER STRUCTURE®

BUILT TO LAST

Every coach—from our smallest Class C to our largest diesel-pusher model—is built to Winnebago's® legendary SuperStructure® construction design. It's a process developed and refined over more than 50 years of building some of the strongest, most durable coaches in the industry.

## TESTING

Before rolling out of our factories, every coach undergoes an extensive 113-point inspection. Each coach also passes a high-pressure water test that simulates rain at a rate of 50-inches per hour to check for leaks. During the design process, our computer simulations, physical testing center, and rigorous test track ensure each model is built to last.



## DETAILS

At Winnebago, we treat the features you can't see with the same care as the ones you can. Look in the access panels of some of our competitors' coaches and you'll see loose insulation and wires haphazardly strewn about. Winnebago maintains a clean fit and finish throughout so your coach will last for the long haul.



## BUILT IN-HOUSE

We process and finish key aluminum parts. We rotocast our own plastic components. In fact, we manufacture most of our own parts so they are designed to fit the space, rather than fitting the space to an awkward off-the-shelf component size.



**SUPER  
STRUCTURE**  
BUILT TO LAST

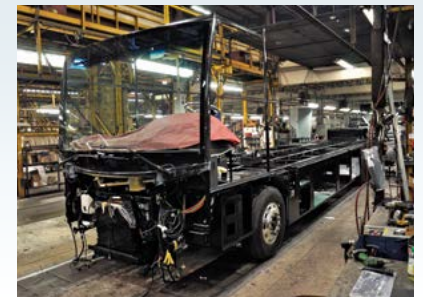


Visit [BetterBuiltRVs.com](http://BetterBuiltRVs.com) to gain real insight into what goes into a Winnebago motorhome.

## TAKE A TOUR

We're proud of our processes, state-of-the-art facilities, and the people who make Winnebago number one. We invite you to visit our complex in Forest City, Iowa, for a firsthand look at the dedication and technology behind every motorhome we build.

Call (641) 585-6936 or (800) 643-4892 or visit us online at [WinnebagoInd.com/company/visit](http://WinnebagoInd.com/company/visit) for more information.

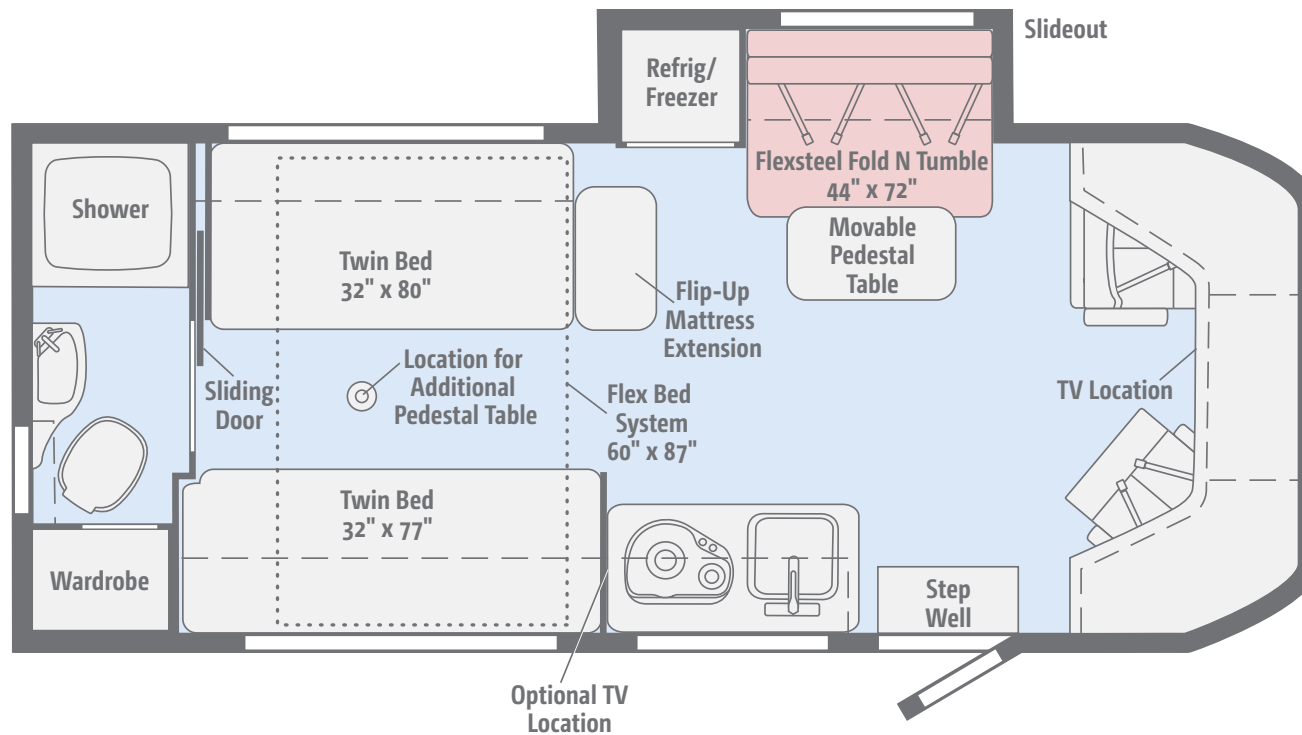




Click here to explore this floorplan's web page.

## 23A

The Flex Bed System, Flexsteel® Fold N Tumble sofa and a pedestal table that can be moved to multiple locations making the 23A one of the most versatile RVs on the road.

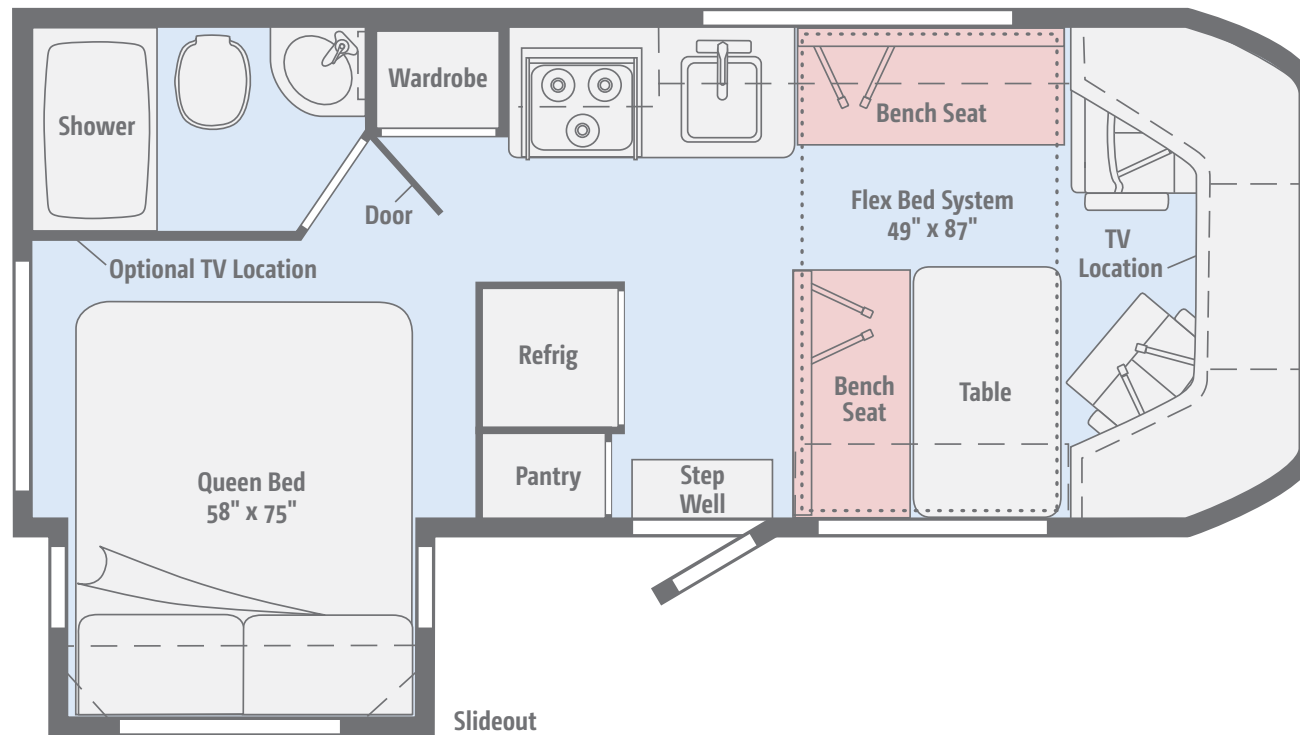




Click here to explore this floorplan's web page.

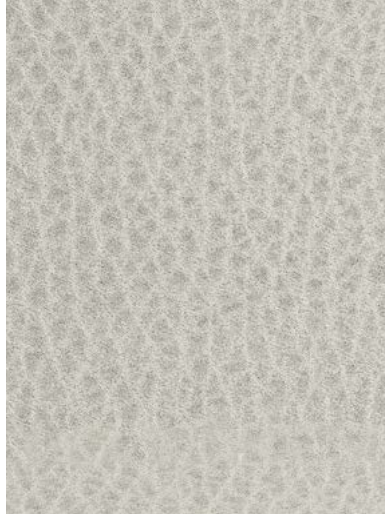
## 23T

A bedroom slideout allows for a queen bed and a full bathroom. Up front, the Flex Bed System converts the bench seats and table into a second large sleeping area.

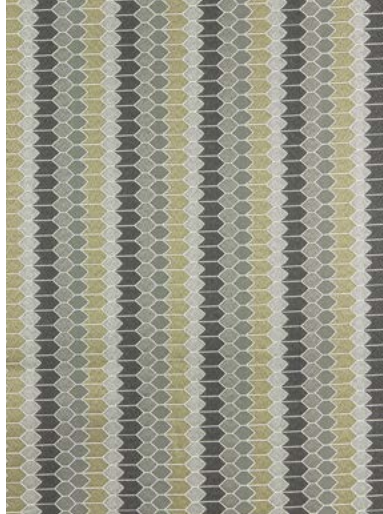


Choose from three fabric collections and two wood finishes.

## Spark



Primera



Feature Fabric



Bed Cover



Laminate Countertop



Vinyl Flooring



Washed Maple



Glazed Driftwood

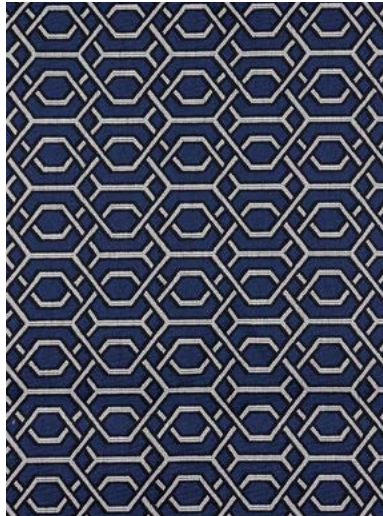
Winnebago® reserves the right to change décor materials and specifications without notice or obligation.

Choose from three fabric collections and two wood finishes.

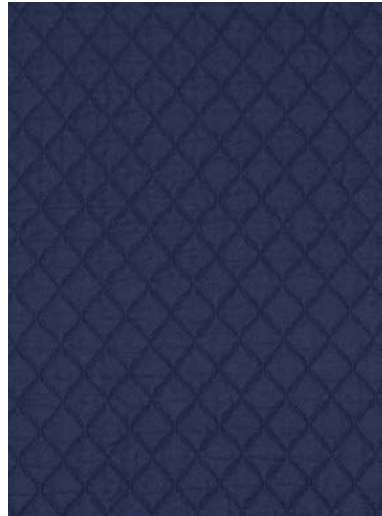
## Blueprint



Primera



Feature Fabric



Bed Cover



Laminate Countertop



Vinyl Flooring



Washed Maple



Glazed Driftwood

Winnebago® reserves the right to change décor materials and specifications without notice or obligation.

Choose from three fabric collections and two wood finishes.

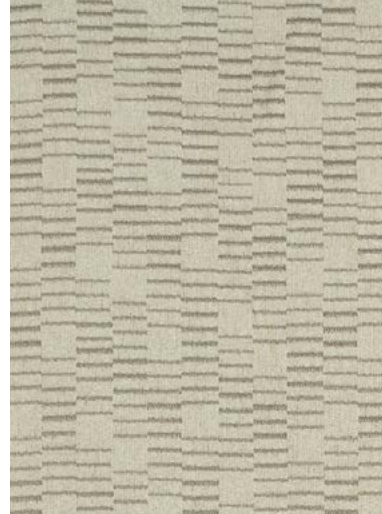
## Jumper



Primera



Feature Fabric



Bed Cover



Laminate Countertop



Vinyl Flooring



Washed Maple



Glazed Driftwood

Winnebago® reserves the right to change décor materials and specifications without notice or obligation.

The Fuse comes standard in deluxe graphics.



**Magnetic**  
DELUXE GRAPHICS PACKAGE

Weights & Measures	23A	23T
Length	24'	24'
Exterior Height <sup>1</sup>	10'2"	10'2"
Exterior Width <sup>2</sup>	7'6"	7'6"
Exterior Storage <sup>3</sup> (cu. ft.)	23.1	36.2
Awning Length	16'	10'4"
Interior Height	6'8"	6'8"
Interior Width	7'3"	7'3"
Freshwater Tank Capacity <sup>4</sup> (gal.)	27	33
Water Heater Capacity (gal.)	6	6
Holding Tank Capacity - Black/Gray <sup>4</sup> (gal.)	43/41	41/43
LP Capacity <sup>5</sup> (gal.)	13	13
Fuel Capacity (gal.)	25	25
GCWR <sup>6</sup> (lbs.)	13,500	13,500
GVWR (lbs.)	10,360	10,360
GAWR - Front (lbs.)	4,130	4,130
GAWR - Rear (lbs.)	7,275	7,275
Wheelbase	156"	156"
Seating Capacity	4	4

**Ford® Transit Chassis**  
 185-hp. 3.2L I5 diesel engine, 6-speed automatic overdrive transmission w/SelectShift®  
 Trailer Hitch®  
 4-pin trailer connector  
 Stainless steel wheel liners

**Optional Upgrade Package**  
**Convenience Package** cab steps, Coleman® Mach® 10 Powersaver low profile roof A/C w/1,800-watt heat strip, slide-out cover, swivel passenger cab seat w/booster cushion, additional coach battery, powered patio awning w/LED lights and Flexguard awning cover, rear ladder

**Cab Conveniences**  
**Cab seats** armrests, fixed lumbar support, adjustable headrest, and multi-adjustable recline/slide (driver seat only)  
**Radio** AM/FM stereo, CD, audio input jack, 4" multi-function display, HD and SiriusXM™ ready  
**Rearview Monitor System** w/color camera  
**Airbags** driver and front passenger  
**3-point seat belts**  
**Cruise control**  
**Power steering** w/tilt wheel  
**12-volt powerpoints**  
**Power door locks**  
**Sunvisors**  
**Power exterior mirrors** w/defrost/turn signal  
**Cab window privacy panels**

**Interior**  
 32" HDTV  
**Coach Stereo System** AM/FM, CD/DVD player, Bluetooth,™ front input jack, and alarm clock  
**Satellite system ready**  
**MCD blackout roller shades**  
**Tinted windows**  
**Amplified digital HDTV antenna**  
**Systems monitor panel**  
**Roof vent**  
**Vinyl ceiling**  
**Mirror** (23T)  
**LED lighting**  
**Assist bar**  
**Vinyl flooring throughout**  
**USB chargers**

**OPTIONAL EQUIPMENT**  
 Powered ventilation fan

**Galley**  
**Laminate countertops**  
**Flip-up countertop extension** (23A)  
**Double-door refrigerator/freezer**  
**2-burner range top** w/glass cover (23A)  
**3-burner range top** (23T)  
**Microwave oven** w/touch control (23T)  
**Microwave/convection oven** w/touch control (23A)  
**Decorative backsplash** w/indirect lighting  
**Stainless steel sink** w/sink cover

**OPTIONAL EQUIPMENT**  
 3-burner range top w/oven (23T)

**Bath**  
 Skylight  
 Flexible showerhead  
 Retractable, self-cleaning shower screen  
 Toilet w/foot pedal  
 Fiberglass sink molded into countertop  
 Shower w/wall surround  
 Powered roof vent  
 Mirror (23A)  
 Medicine cabinet (23A)  
 Robe hook(s)  
 Towel ring(s) (23A)  
 Tissue holder

**Bedroom**  
 Room divider curtain  
 Flex Bed System (23A)  
 Deluxe Sleep System w/adjustable headrest (23A)  
 Twin beds w/foam mattresses and access to storage below (23A)  
 Queen bed w/memory foam mattress and mattress cover (23T)

**OPTIONAL EQUIPMENT**  
 24" HDTV

**Exterior**  
 Porch light w/interior switch  
 Premium high-gloss skin  
 Lighted storage compartments  
 Exterior speaker system

**OPTIONAL EQUIPMENT**  
 Bike rack  
 Powered patio awning w/LED lighting

## Heating & Cooling System

20,000 BTU low-profile, ducted furnace

## Electrical System

Exterior AC duplex receptacle and TV jack

AC/DC load center, 45-amp. converter/charger

30-amp. power cord

Coach battery disconnect system

Automatic dual-battery charge control

Auxiliary start circuit

Deep-cycle, Group 24 battery

### OPTIONAL EQUIPMENT

Solar panel/battery charger

2,500-watt Cummins® Onan® LP generator

## Plumbing System

**Service Center** city water hookup, exterior wash station w/lighted pump switch, sewer hose, coiled water hose, QuickConnect®, and sprayer head

**Water tank fill** w/lockable door

**Water heater**

**TrueLevel™** holding tank monitoring system

**Permanent-mount LP tank** w/gauge

**On-demand water pump**

### OPTIONAL EQUIPMENT

Heated drainage system

## Safety

**Child seat tether anchor** (23T)

**LP, smoke, and carbon monoxide detectors**

**10 BC fire extinguisher**

**Ground fault interrupter**

## Warranty<sup>7</sup>

**12-month/15,000-mile basic limited warranty<sup>8</sup>**

**36-month/36,000-mile limited warranty on structure<sup>8</sup>**

**10-year limited parts-and-labor warranty on roof skin<sup>8</sup>**

### FOOTNOTES

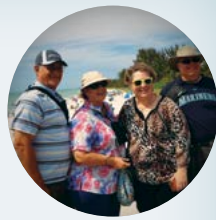
1. The height of each model is measured to the top of the tallest standard feature and is based on the curb weight of a typically equipped unit. The actual height of your vehicle may vary by several inches depending on chassis or equipment variations. Please contact your dealer for further information.
2. Floorplans feature a wide-body design – over 96" In making your purchase decision, you should be aware that some states restrict access on some or all state roads to 96" in body width. Before making your purchase decision, you should confirm the road usage laws in the states of interest to you.
3. The load capacity of your motorhome is designated by weight, not by volume, so you cannot necessarily use all available space when loading your motorhome.
4. Capacities are based on measurements prior to tank installation. Slight capacity variations can result due to installation applications.
5. Capacities shown are tank manufacturer's listed water capacity (W.C.). Actual filled LP capacity is 80% of listing due to overfilling prevention device on tank.
6. Actual towing capacity is dependent on your particular loading and towing circumstances which includes the GVWR, GAWR, and GCWR, as well as adequate trailer brakes. Please refer to the Operator's Manual of your vehicle for further towing information.
7. See separate chassis warranty.
8. See your dealer for complete warranty information.

NA Not Available

Not all items available in combination. See dealer for details.

Winnebago's® continuing program of product improvement makes specifications, equipment, model availability, and prices subject to change without notice. Published content reflects the most current product information at time of printing. Please consult your dealer for individual vehicle features and specifications.





Let us host  
your next

# Adventure



[WGOAdventures.com](http://WGOAdventures.com)

Connect with Winnebago (Click one of the following)



Like us



Follow us



Watch us



Show your Winnebago love  
with high-quality gifts and wearables.



Apparel | Gifts | Parts | Gear

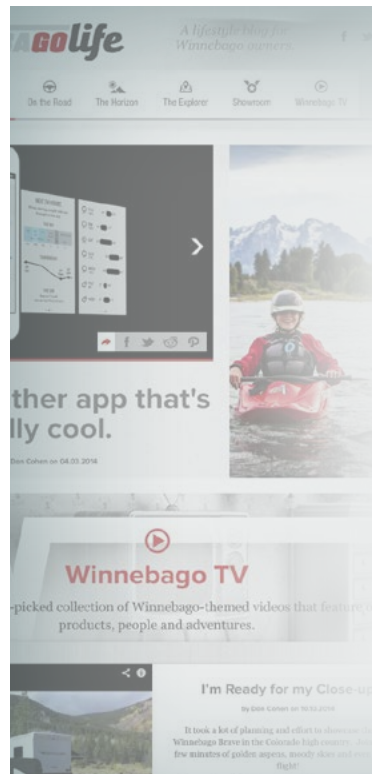
[WinnebagoOutdoor.com](http://WinnebagoOutdoor.com)

Find your style



## WinnebagoInd.com Has All The Answers

Visit [WinnebagoInd.com](http://WinnebagoInd.com) on your computer, smartphone, or tablet for the latest product information and updates.



## Welcome to GoLife!

Visit our lifestyle blog  
for motorhome news,  
personal travelogues,  
and community stories.

[WinnebagoLife.com](http://WinnebagoLife.com)

**GoLife**

# **PREFERRED CARE PROGRAM**

We back our motorhomes with best-in-class support both before and after the sale:

- 12-month/15,000-mile basic limited warranty
- 36-month/36,000-mile limited warranty on structure
- 10-year limited parts-and-labor warranty on fiberglass roof
- Complimentary 24-hour roadside assistance program



- TripSaver® Fast Track Parts guarantees that in-stock warranty parts ship directly to your dealer within 24 hours
- National dealer service network



For more information:  
**WGOService.com**



From RV to personal insurance, Winnebago RV Insurance can provide all the coverage and services you need to feel at home on the road.

**For more information:**  
**(800) 642-4892**



## **CONTACT US**

### **GENERAL INQUIRIES**

Corporate Switchboard  
(641) 585-3535

### **CURRENT PRODUCT OWNER AND SERVICE-RELATED INQUIRIES**

(800) 537-1885  
or @winnebagoind.com

### **NEW VEHICLE SALES INQUIRIES**

sales@winnebagoind.com

### **FAX**

(641) 585-6966

### **POSTAL ADDRESS**

Winnebago Industries, Inc.  
P.O. Box 152  
Forest City, IA 50436

### **STREET ADDRESS**

Winnebago Industries, Inc.  
605 West Crystal Lake Road  
Forest City, IA 50436



## **Join the Club, Join the Fun**

Here's the perfect way to begin your life on the road as the owner of a new Winnebago – by joining the exclusive WIT Club. Start your adventure with other fun-loving WIT Club members from across the country and get the most out of your new Winnebago motorhome.



### **Members enjoy:**

- Caravans and rallies
- Newsletters
- Local and state group activities
- RV travel benefits

See more at  
**WITClub.com**



## **Grand National Rally**

Each year, thousands of Winnebago owners descend upon Forest City, Iowa. Rally-goers enjoy an unforgettable week reconnecting with friends, taking tours, participating in activities, and more. Join the adventure next July!