

# 08 SUNOVA





**SMARTSPACE**  
WEB

### TRY SOMETHING NEW.

A great new look and plenty of new features make 2008 a great model year to get into a new Itasca Sunova®. Five models give you plenty to choose from, each with elegant, curved cabinetry and several innovative SmartSpace™ features that make the most of the available interior space. Choose between plush carpeting and easy-to-clean vinyl floorcovering in the living area. You

can also add plenty of upgrades such as rope accent lighting, a decorative range backsplash as well as an UltraLeather™ package for the Stitchcraft furniture. More features, a stylish new look and quality Winnebago Industries® construction – that's the 2008 Itasca Sunova.

## START COOKING

Get ready for some home cookin' in a galley loaded with residential features, including a three-burner range top, a large microwave oven and a sink with a contemporary faucet. For even more galley flexibility, select the Interior Upgrade Package with a range back-splash, range cover, Titanium Touch™ stainless refrigerator insert and sink covers. This package also provides rope accent lighting, throw pillows and storage baskets below the dinette seats.

For your viewing pleasure, a 19" LCD TV is positioned for optimal viewing. For added convenience it is wired to the dash stereo system, which includes a CD/DVD player so you can enjoy your favorite movies. The stereo system even includes an input jack for your video camera so you can wind down by watching home movies of your adventures. The TV runs off 12-volt power so you can watch it without shoreline or generator power — no inverter required.

For enhanced climate control, choose the dual-glazed, thermo-insulated windows and a heat pump that actually uses the air conditioning system to take the chill off cool mornings without using LP. For guests, the available sofa/sleeper opens up to reveal an air mattress and automatic pump (available 30B, 34M, 35J) that promises an air-cushioned good night's sleep.

**WEB** Select a Key Feature

The **WEB** icon designates a Winnebago Industries Key Feature. For further in-depth information and photos, use the Drop-down Menu or click on the 'Key Features' page at [winnebagoind.com](http://winnebagoind.com).



30B Rain Storm with Washed Maple

**CABINETS** Curved cabinetry in your choice of woods lends an elegant touch to the Sunova.



**WEB**

### ONEPLACE™

Frequently used gauges and controls are conveniently placed in one location for easy access.



**BUNK BEDS** The 35J features bunk beds with an available DVD player for each bunk.



**WEB** **TRUEREVEAL** Eliminate tank-level guesswork with our exclusive TrueLevel™ holding tank monitoring system. It incorporates detector cells that determine liquid levels from outside the tank. No probes means no more corrosion, just accurate readings, time after time.



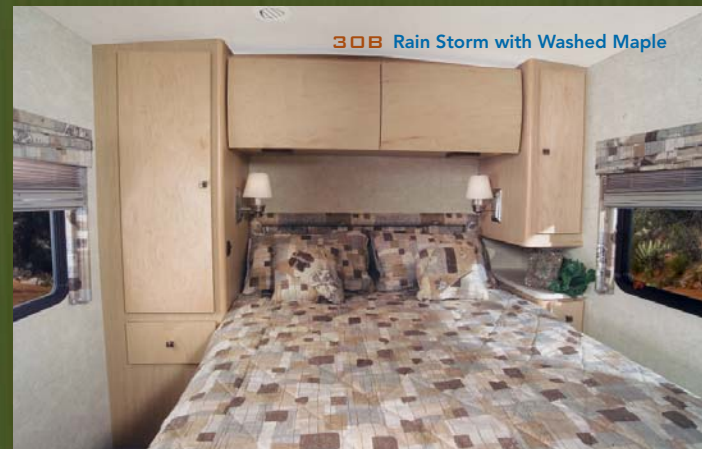
**DASH RADIO** The dash radio includes an alarm clock and an easy to operate CD/DVD player with remote that connects to the TV.



**FULL-EXTENSION DRAWER SLIDES** Drawers are sized to maximize storage, hold tight with positive latches and open fully for easy access to stored items.



**TV** The TV runs on 12-volt power so you can watch it without shoreline hookup, a generator or even an inverter.



30B Rain Storm with Washed Maple

**BEDROOM** The bedroom offers roomy overhead cabinets and a wardrobe.

## HAVE A SEAT

Whether you're driving or relaxing at night, the high-back cab seats with recline, swivel and lumbar support keep you comfortable and at ease. Add UltraLeather for a more luxurious ride. Driving the Sunova is easy with switches, gauges and controls at your fingertips, plus an available rearview monitor to assist with backing.

The QuickPort® service connection hatch makes hookups refreshingly simple. It even allows the service compartment door to close while hookups are connected. The standard hitch<sup>6</sup> lets you tow up to 5,000 pounds and includes a seven-pin connector for easy hookups to towed items. Traveling is just more fun in a Sunova.



**DASH** You're in command with a stylish dash that places driver controls at your fingertips. Exterior mirrors are positioned for optimal viewing. Available UltraLeather cab seats slide, swivel and recline for all-day comfort.

**SIDEVIEW CAMERAS** The available sideview video camera system is activated by your turn signals and allows the driver to view the sides of the coach through the available rearview monitor.



**REAR STORAGE** The 30B features a large, rear storage compartment that you can access from the rear or right sidewall — perfect for larger items.

**EXTERIOR SERVICE CENTER** Connections and controls use color-coded labels for easy identification. The available wash station is great for quick cleanups, while heated holding tanks and a winterization valve let you extend the camping season.

**WEB QuickPort** The QuickPort service connection hatch is fast and simple, allowing the bay door to close while your hookups are connected.



**WEB STOREMORE** No need to crawl on your hands and knees, thanks to our exclusive slideout system that allows exterior compartments to extend with the slideroom for easy storage access.



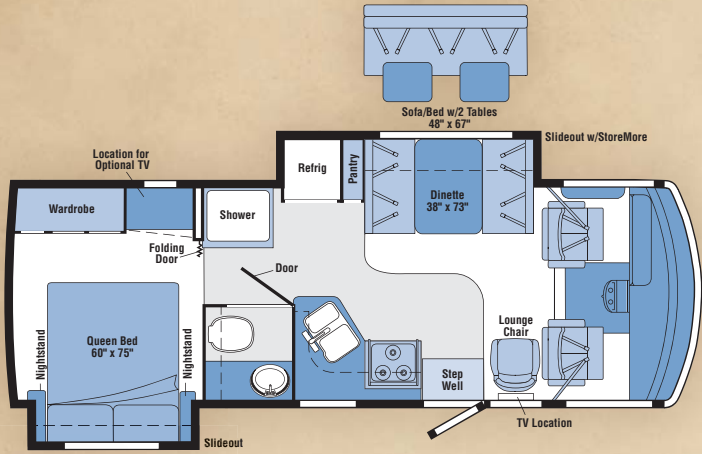
## WEB 3 position controls

Raise and lower the hydraulic jacks from any of three convenient locations. Do the job from the driver's seat or step outside and use the controls at the entrance door or service center to monitor the jacks as you lower them. No hassle. No guesswork. Just a level coach at your convenience.

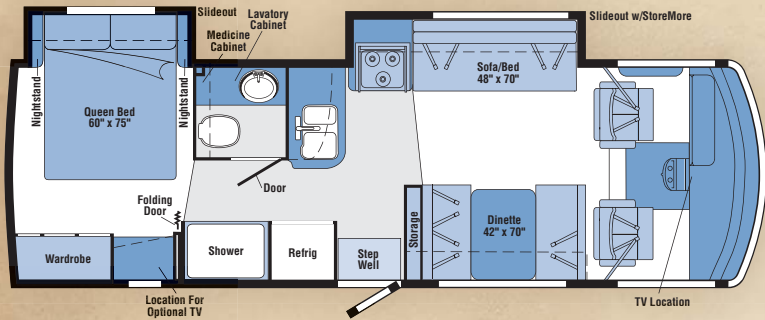
# 08 SUNOVA FLOORPLANS

Carpet
  Vinyl Floorcovering
 

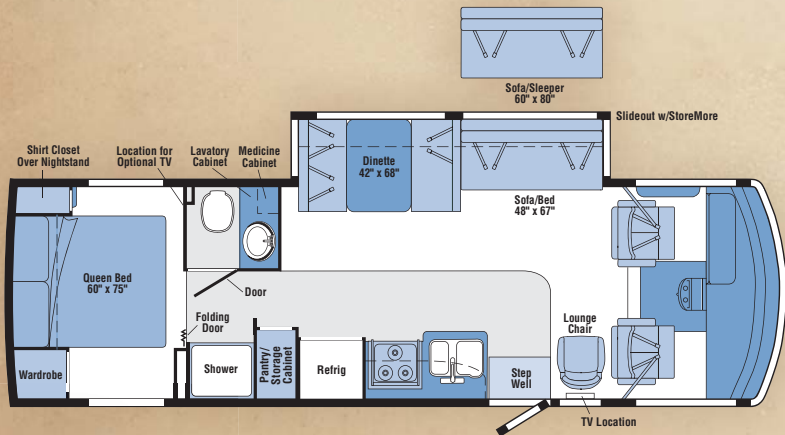
 Seat Belts
 
*Note: Dimensions shown are for sleeping space only and may vary due to styling differences. Dashed lines denote overhead storage areas.*



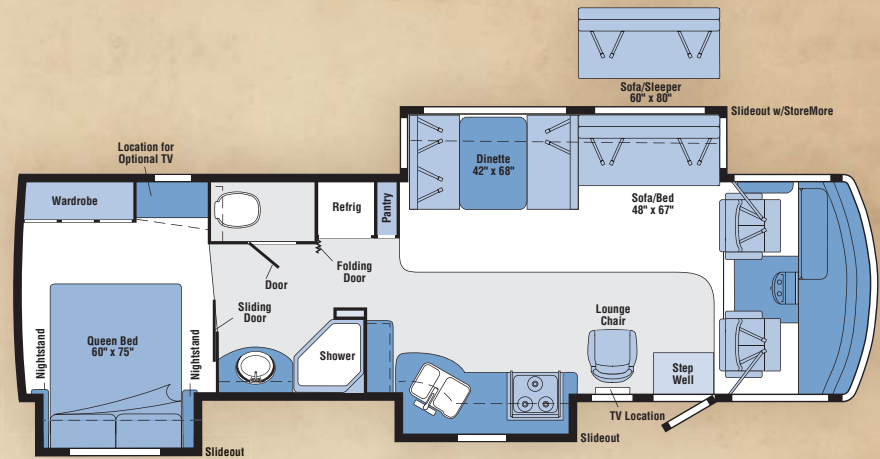
**26P**



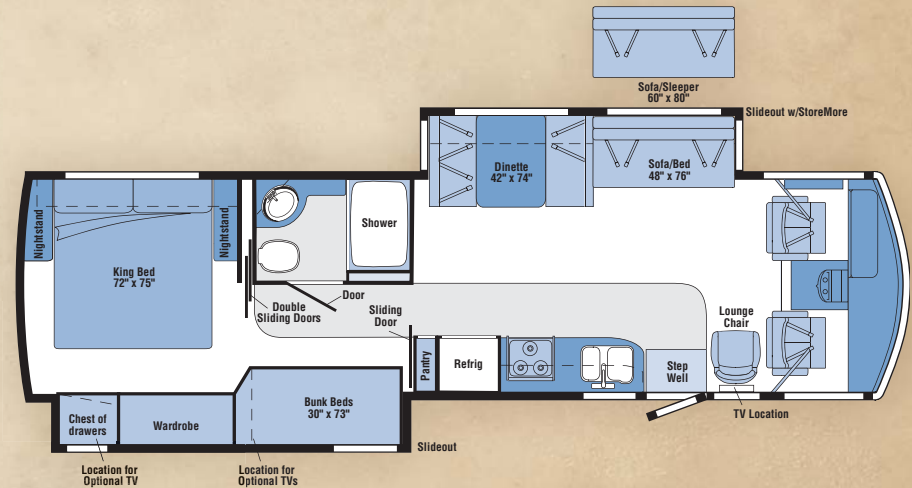
**29R**



**30B**



**34M**



**35J**

# 08 SUNOVA SPECIFICATIONS

WEIGHTS & MEASURES	26P	29R	30B	34M	35J
Length	26'11"	29'9"	30'1"	34'7"	35'3"
Exterior Height <sup>1</sup>	12'1"	12'3"	12'3"	12'3"	12'3"
Exterior Width <sup>2</sup>	8'5.5"	8'5.5"	8'5.5"	8'5.5"	8'5.5"
Exterior Storage <sup>3</sup> (cu. ft.)	67.3	81.2	126.2	98.9	101.8
Awning Length	11'6"	16'	16'	18'	13'
Interior Height	6'8"	6'8"	6'8"	6'8"	6'8"
Interior Width	8'0.5"	8'0.5"	8'0.5"	8'0.5"	8'0.5"
Freshwater Capacity w/Heater <sup>4</sup> (gal.)	67	75	62	72	75
Holding Tank Capacity - Black/Gray <sup>4</sup> (gal.)	39 / 36	37 / 41	41 / 57	41 / 57	44 / 48
LP Capacity <sup>5</sup> (gal.)	18	18	18	18	18
Fuel Capacity (gal.)	60	75	75	75	75
GCWR <sup>6</sup> (lbs.)	22,000 <sup>B</sup>	26,000 <sup>A</sup> / 22,000 <sup>B</sup>	26,000 <sup>A</sup> / 22,000 <sup>B</sup>	26,000 <sup>A</sup> / 26,000 <sup>C</sup>	26,000 <sup>A</sup> / 26,000 <sup>C</sup>
GVWR (lbs.)	16,000 <sup>B</sup>	18,000 <sup>A</sup> / 18,000 <sup>B</sup>	18,000 <sup>A</sup> / 18,000 <sup>B</sup>	20,500 <sup>A</sup> / 21,200 <sup>C</sup>	20,500 <sup>A</sup> / 21,200 <sup>C</sup>
GAWR - Front (lbs.)	6,500 <sup>B</sup>	7,000 <sup>A</sup> / 7,000 <sup>B</sup>	7,000 <sup>A</sup> / 7,000 <sup>B</sup>	7,500 <sup>A</sup> / 8,000 <sup>C</sup>	7,500 <sup>A</sup> / 8,000 <sup>C</sup>
GAWR - Rear (lbs.)	10,500 <sup>B</sup>	11,000 <sup>A</sup> / 12,000 <sup>B</sup>	11,000 <sup>A</sup> / 12,000 <sup>B</sup>	13,500 <sup>A</sup> / 13,500 <sup>C</sup>	13,500 <sup>A</sup> / 13,500
Wheelbase	159"	190"	190"	228"	228"

AUTOMOTIVE/CHASSIS	26P	29R	30B	34M	35J
<b>A Ford® Chassis</b> – 6.8L SOHC Triton® V10 362-hp, TorqShift™ 5-speed automatic overdrive transmission, hydraulic brakes, 4-wheel ABS, 130-amp. alternator, <b>Wheel Liners</b> stainless steel	S	S	S	S	S
<b>B Workhorse™ Chassis</b> – W-Series 8.1L Vortec V8 340-hp, 4L85-E 4-speed overdrive transmission, hydraulic brakes, 4-wheel ABS, 145-amp. alternator, <b>Wheels</b> stylized aluminum, <b>Wheel Liners</b> stainless steel (26P)	S	0	0		
<b>C Workhorse Chassis</b> – W-Series 8.1L Vortec V8 340-hp, Allison® 6-speed overdrive transmission, hydraulic brakes, 4-wheel ABS, 145-amp. alternator, <b>Wheels</b> stylized aluminum				0	0
<b>Trailer Hitch</b> ® 5,000-lb. drawbar/500 lbs. maximum vertical tongue weight & wiring w/7-pin connector	S	S	S	S	S
<b>Leveling Jacks</b> hydraulic, automatic controls w/ remote, 3-position controls	0	0	0	0	0

CAB AREA & DRIVER CONVENIENCES	26P	29R	30B	34M	35J
<b>Beverage Holder</b> passenger side, <b>Cab Seats (Fabric)</b> armrests, lumbar support (fixed), multiadjustable slide/recline & swivel, <b>Convenience Tray</b> w/cupholders, <b>Cruise Control</b> , <b>Map Lights</b> , <b>Map Pocket</b> , <b>Powerpoint 12-Volt DC/Cigarette Lighter</b> , <b>Receptacle</b> AC duplex, <b>Steering Wheel</b> tilt w/power-assist, <b>Trim Panel</b> driver side w/cupholder, storage tray, <b>Window</b> (driver & passenger) partial slider w/screen, <b>Windshield Wipers</b> intermittent, pantograph arms	S	S	S	S	S
<b>Cab Seats</b> UltraLeather™, <b>Defroster Fans (2)</b> auxiliary 2-speed w/instrument panel switch, <b>Monitor System</b> rearview b/w w/single camera & 1-way audio, Audiovox®, <b>Video Camera System</b> side-mounted cameras	0	0	0	0	0

ENTERTAINMENT	26P	29R	30B	34M	35J
<b>Radio (Cab)</b> AM/FM stereo/CD/DVD/MP3, speakers (4), alarm clock, remote, MP3 input jack, Jensen™ <b>C.B. Wire Prep</b> , <b>Radio Antenna</b> roof-mounted, rubber, <b>Radio Power Switch</b> main/auxiliary battery, <b>Satellite System Ready</b> , <b>TV</b> DC 19" LCD color stereo w/remote, <b>TV Enhancement Package</b> antenna (amplified), 12-volt DC powerpoints, interior jacks, exterior jack, coax wiring, cable input, splitter, shelf (NA 30B)	S	S	S	S	S

ENTERTAINMENT	26P	29R	30B	34M	35J
<b>Entertainment Center (Exterior)</b> w/CD player, DC receptacle, AC duplex receptacle, AM/FM radio, radio antenna, speakers (2), lockable compartment, removable TV table, <b>Satellite Dish Antenna</b> RV digital, manual, remote control extender	0	0	0	0	0
<b>DVD w/8.5" LCD Screen (2)</b> bunk area, headphones, remotes & AV ports					0
<b>TV 14"</b> color DC w/remote (bedroom)			0		
<b>TV 19"</b> color AC w/remote (bedroom)	0	0		0	0

INTERIOR	26P	29R	30B	34M	35J
<b>Blinds</b> mini (lounge, dinette & galley), <b>Ceiling</b> fabric, <b>Countertops</b> laminate radius edge, <b>Curtain</b> wraparound w/track (front), <b>Lights</b> reading, adjustable halogen (overheads), <b>Lights</b> ceiling, incandescent w/wall switches, <b>Roof Vent</b> nonpowered (lounge), powered (bath), <b>Shades</b> pleated (bedroom), <b>Telephone Input</b> interior jack (bedroom or dinette area)	S	S	S	S	S
<b>Wainscoting w/Chair Rail</b>	S		S	S	S
<b>Floorcovering</b> vinyl, front to bedroom, <b>Interior Upgrade Package</b> range backsplash, Titanium Touch™ stainless refrigerator door insert, dinette storage wire baskets, rope accent lighting, range cover, sink covers (2), throw pillow(s), <b>Roof Vent</b> powered, ventilator fan, lounge, <b>Shades</b> day/night pleated (lounge, dinette & bedroom), <b>UltraLeather Upgrade Package</b> cab seats, sofa, lounge chair, <b>Windows</b> dual-glazed/thermo-insulated/flush-mounted	0	0	0	0	0

FURNITURE	26P	29R	30B	34M	35J
<b>Dinette</b> w/access to storage below, cupholders	S	S		S	S
<b>Lounge Chair</b> pedestal, swivel/slide	S		S	S	S
<b>Sofa</b> w/storage below, tables (2), shelves behind sofa (2)	0				
<b>Sofa(s)</b> w/storage below, throw pillow, shelves (NA 29R)	S	S	S	S	S
<b>Sofa/Sleeper</b> air mattress, throw pillow, shelf			0	0	0

GALLEY	26P	29R	30B	34M	35J
<b>Countertop</b> w/flip-up extension (NA 34M), <b>Faucet</b> single-control, Moen® <b>Microwave Oven</b> , <b>Pantry</b> , <b>Range Hood</b> vented w/light & fan, <b>Range Top</b> 3-burner w/storage below, <b>Receptacle(s)</b> duplex, <b>Refrigerator/Freezer</b> double-door	S	S	S	S	S
<b>Microwave/Convection Oven</b> , <b>Range</b> 3-burner w/oven	0	0	0	0	0

BATH	26P	29R	30B	34M	35J
<b>Cabinets</b> lavatory, medicine, <b>Faucet (Lavatory)</b> dual-control, <b>Faucet (Shower)</b> dual-control w/flexible showerhead, <b>Light</b> shower, <b>Shower Door</b> textured glass, <b>Shower Skylight</b>	S	S	S	S	S

BEDROOM	26P	29R	30B	34M	35J
<b>Bedsread</b> pillow shams, pillows, throw pillow, <b>Lights</b> decorative wall lamps (NA 35J)	S	S	S	S	S
<b>Bed</b> queen, Serta® innerspring w/underbed storage	S	S		S	
<b>Bed</b> queen, Serta innerspring, <b>Headboard</b>			S		
<b>Bed</b> king, innerspring w/underbed storage					S
<b>Bunk Beds</b> w/drawer below, privacy curtain, mattress cover, pillows & shams, storage pockets, shelves					S

EXTERIOR	26P	29R	30B	34M	35J
<b>Awning Rails</b> w/rain gutters, <b>Door</b> entrance w/ separate screen door, deadbolt lock, <b>Entrance Door Steps</b> double, electric w/doorjamb switch, <b>Exterior Light</b> porch w/interior switch, <b>Fuel-Fill Door</b> , <b>Mirrors</b> manual adjust w/convex, <b>Mudflaps</b> front, <b>Receptacle</b> AC duplex (passenger side storage compartment w/ QuickPort®), <b>Sidewall Skin</b> 1-piece smooth fiberglass, <b>Storage Compartments</b> valance panels, gas strut, single-paddle latch, lights, trunk liner, TriMark® KeyOne™ System	S	S	S	S	S
<b>Awning</b> patio, <b>Ladder</b> , <b>Mirrors</b> electric/remote w/ defrost, <b>Sidewall Skin</b> premium high-gloss Vetrolite®	0	0	0	0	0

SYSTEMS	26P	29R	30B	34M	35J
<b>HEATING &amp; A/C – Automotive Heater/Air Conditioner</b> blend air system	S	S	S	S	S
<b>Air Conditioner (Roof)</b> 14,800 BTU, ceiling-ducted w/wall thermostat, <b>Furnace</b> 30,000 BTU, low-profile, ducted, in-floor, <b>Generator</b> 4,000-watt, Cummins Onan® MicroQuiet™ gas	S	S	S		
<b>Air Conditioners (2) (Roof)</b> high-efficiency/ceiling-ducted w/wall thermostat, includes PowerLine® energy management system, <b>Furnace</b> 40,000 BTU, low-profile, ducted, in-floor, <b>Generator</b> 5,500-watt, Cummins Onan Marquis Gold™ gas				S	S
<b>Air Conditioner w/Heat Pump (Roof)</b> 14,800 BTU, ceiling-ducted w/wall thermostat	0	0	0		
<b>Air Conditioner w/Heat Pump (2) (Roof)</b> high-efficiency/ceiling-ducted w/wall thermostat, includes PowerLine energy management system				0	0
<b>ELECTRICAL – Auxiliary Start Circuit, Batteries (2) (Coach)</b> Group 24 deep-cycle, <b>Battery (Coach)</b> Disconnect System, <b>Dual Battery</b> charge control, <b>Electrical Distribution System</b> AC breakers, DC fuses, 45-amp. converter/charger (26P, 29R & 30B), AC & DC breaker panels, 45-amp. converter/charger (34M & 35J), <b>Generator Prep Kit</b> , <b>OnePlace® Systems Center</b> wall-mounted, energy management display (34M & 35J), battery condition gauge, generator hourmeter gauge, generator start/stop switch, heating & A/C thermostat, holding tank levels, LP tank level, water heater lights, water heater switch, water pump switch, water tank level, <b>Power Cord</b> 30-amp.	S	S	S	S	S
<b>PLUMBING – Service Center</b> city water hookup/ tank diverter fill, drainage valves, QuickPort service connection hatch, cable TV input, power cord, portable satellite hookup, 10' sewer hose, telephone input, <b>Tank</b> holding, heated compartment, <b>Tank LP</b> , permanent mount w/gauge, <b>TrueLevel™ Holding Tank Monitoring System</b> , <b>Water Heater</b> 6-gallon, electronic ignition, LP gas, <b>Water Pump</b> demand, <b>Water System Winterization Package</b> water heater bypass valve, siphon tube	S	S	S	S	S
<b>Wash Station</b> exterior w/pump switch located in service center, <b>Water Heater</b> 6-gallon, electronic ignition/110 VAC/LP w/motoraid & auxiliary auto heater, includes energy management system (26P, 29R & 30B)	0	0	0	0	0

SAFETY	26P	29R	30B	34M	35J
<b>Assist Handle</b> exterior, <b>Assist Bar</b> interior, <b>Bumpers</b> front & rear, <b>Child Seat Tether Anchor</b> , <b>Detectors/Alarms</b> LP leak, smoke, carbon monoxide, <b>Fire Extinguisher</b> 10 BC, <b>Ground Fault Interrupter</b> , <b>Brakelamp</b> high-mount, <b>Seat Belts</b> cab, 3-point, <b>Seat Belts</b> lap (in selected areas), <b>Slideroom Master Lock Switch</b> key activated, <b>Window</b> escape, <b>Windshield</b> laminated safety glass	S	S	S	S	S

WARRANTY <sup>7</sup>	26P	29R	30B	34M	35J
<b>12-month/15,000-mile basic warranty<sup>8</sup></b> , <b>36-month/36,000-mile limited warranty on structure<sup>8</sup></b> , <b>10-year limited parts &amp; labor warranty on roof skin<sup>8</sup></b>	S	S	S	S	S

- The height of each model is measured to the top of the tallest standard feature and is based on the curb weight of a typically equipped unit. The actual height of your vehicle may vary by several inches depending on chassis or equipment variations. Please contact your dealer for further information.
- Sunova floorplans feature a wide-body design - over 96". In making your purchase decision, you should be aware that some states restrict access on some or all state roads to 96" in body width. Before making your purchase decision, you should confirm the road usage laws in the states of interest to you.
- The load capacity of your motor home is designated by weight, not by volume, so you cannot necessarily use all available space when loading your motor home.
- Capacities are based on measurements prior to tank installation. Slight capacity variations can result due to installation applications.
- Capacities shown are tank manufacturer's listed water capacity (W.C.). Actual filled LP capacity is 80% of listing due to overfilling prevention device on tank.
- Actual towing capacity is dependent on your particular loading and towing circumstances which includes the GVWR, GAWR, and GCWR as well as adequate trailer brakes. Please refer to the Operator's Manual of your vehicle for further towing information.
- See separate chassis warranty details.
- See your dealer for complete warranty information.

NA Not Available

S Standard

0 Optional

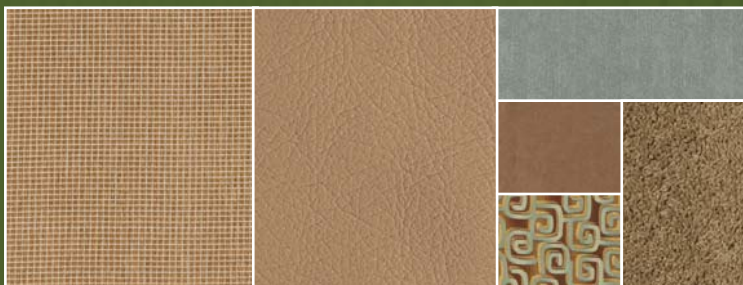
Not all items available in combination. See dealer for details.

Winnebago Industries® continuing program of product improvement makes specifications, equipment, model availability, and prices subject to change without notice. Comparisons to other motor homes are based on the most recent information available at printing.

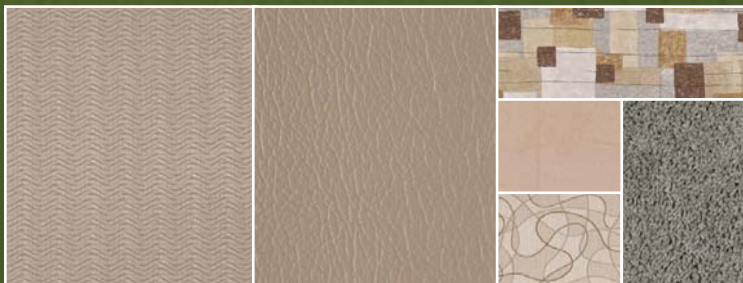
## INTERIOR DECOR

Choose from three fabric selections and two cabinet wood choices.

MAIN	ULTRA-LEATHER	BEDSPREAD	
		ACCENT	CARPET
		ACCENT	



Winter Surf w/available Timber UltraLeather™



Rain Storm w/available Papyrus UltraLeather



Boardwalk w/available Timber UltraLeather



Honey Cherry



Washed Maple



## STANDARD GRAPHICS



Medium Parchment w/Sunset/Dark Cherry/Nutmeg



Medium Parchment w/Blue/Dark Blue/Flintstone

## DELUXE GRAPHICS



Metallic Gold



Catalina Blue Metallic

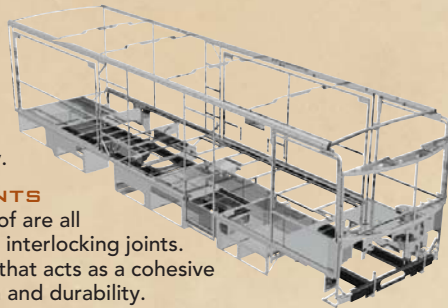


**BUILT BY WINNEBAGO INDUSTRIES.  
BUILT TO LAST.**

Itasca motor homes are built by Winnebago Industries, the company that defined motor homes. The company that built its reputation on quality construction. The company that transformed the motor home concept into a way of life.

Today, Winnebago Industries brings that reputation for quality and its 49-year history of motor home innovation to the design and construction of every motor home. It's all a part of SuperStructure<sup>®</sup>, our exclusive system of proprietary structural components that instills each motor home with improved strength and durability.

**SOLID FOUNDATION** Steel and aluminum truss work provides a solid, flat foundation for the floor and sidewalls. Winnebago Industries engineers also take special care to distribute the weight of components to ensure proper handling and stability.



**INTERLOCKING JOINTS**  
The floor, sidewalls and roof are all integrally connected using interlocking joints. This creates a coach body that acts as a cohesive unit for improved strength and durability.

**E-COATING** Winnebago Industries employs an exclusive 12-stage automotive-style dip tank process to apply an advanced electrodeposition coating on critical steel components for superior corrosion protection.



**WEB**

**THERMO-PANEL<sup>®</sup> SIDEWALLS** Invented by Winnebago Industries, Thermo-Panel construction combines a fiberglass panel, high-density, block-foam insulation and aluminum support structures to create some of the most durable, lightweight sidewalls in the industry.

**ATTENTION TO DETAIL** Whether it's sending every coach through a high-pressure water tunnel to check for leaks or labeling each individual wire and barcoding parts to save time and frustration during service, Winnebago Industries considers every detail to ensure your Itasca motor home provides you with years of pleasure.

**STRONG AS STEEL** Appliances are secured directly to embedded steel plates for added safety. Windshields are also mounted in steel with an automotive-style sealant; lesser designs use a rubber gasket to mount the windshield in fiberglass.



1-year-old Itasca fiberglass roof



1-year-old competitor's rubber roof

**FIBERGLASS ROOF** The Sunova features a crowned, one-piece fiberglass roof, backed with a 10-year limited parts-and-labor roof skin warranty. Fiberglass offers superior strength, attractiveness and durability over the rubber roofs found on many competitive models which can chalk, streak and degrade over time. Fiberglass also provides increased puncture and tear resistance.



**TAKE A TOUR** We're proud of our process, state-of-the-art facilities and the people who make Winnebago Industries number one. We invite you to visit our factory in Forest City, Iowa, for a first-hand look at the dedication and technology behind every motor home we build.



**RECOGNIZED QUALITY** The Recreation Vehicle Dealer Association annually rates RV manufacturers and awards the Quality Circle award to manufacturers who provide exceptional products, service and support. Winnebago Industries is proud to be the only manufacturer to receive this award every year since its inception.



**COMMITTED TO SERVICE** We back our motor homes with the industry's best service after the sale.

- 12-month/15,000-mile basic limited warranty
- 36-month/36,000-mile warranty on structure
- Standard 10-year limited parts-and-labor roof skin warranty
- Complimentary 24-hour roadside assistance program
  - RV Technical Assistance Hotline
  - RV Service Appointment Assistance
  - Emergency Trip Interruption
  - Emergency Message Service
  - Nationwide Trip Routing
  - Fee-Free Travelers Cheques
- TripSaver Fast Track Parts. TripSaver guarantees that in-stock warranty parts ship directly to your dealer within 24 hours.
- National dealer service network



**WIT CLUB** Itasca owners are like family. Joining the Winnebago-Itasca Travelers is a great way to meet and travel with other Itasca enthusiasts. Members enjoy:

- Caravans and rallies
- Local and state group activities
- RV travel benefits



**WINNEBAGOIND.COM** Visit us on the web for more info on all of our motor homes, the latest product updates and a host of web-exclusive content.

For Sales and Service Information Contact:



Built proudly by



NYSE listing: WGO

©2007 Winnebago Industries, Inc.

Printed in USA

Seat belts are your most important hookup. Always buckle up.