

# 08 DESTINATION





 SMARTSPACE  
WEB

### YOU'VE FOUND YOUR DESTINATION.

There's a new breed of Class A motor homes hitting the road and the 2008 Winnebago Destination™ leads the way, giving you the option of a gas pusher or diesel pusher chassis. It's the first coach to take full advantage of the all-new Workhorse UFO™ gas chassis and its powerful 8.1L, 340-hp rear engine. You can

also choose the Freightliner® XC diesel chassis with a Cummins® 6.7L ISB diesel engine. Two innovative models are loaded with storage and contemporary features like beautiful curved cabinetry and a 7'2.5" ceiling height. For more power and more fun, make plans for a Winnebago Destination.

## JUST LIKE HOME

Wherever your destination, you'll have all the comforts of home. Watch movies in full surround sound on the entertainment center, complete with a 30" TV, CD/DVD player and Home Theater Sound System. A 600-watt inverter lets you enjoy TV without shoreline or generator power. You'll receive broadcast channels from an amplified antenna, or choose the available King-Dome® dual LNB satellite system\* and receive digital satellite programming to two different receivers. Enjoy it all from the comfort of the Flexsteel® sofa or the UltraLeather™ Euro Chair.

Your meal selection will be limited only by your imagination in the full-featured galley. The 3-in-1 range/microwave/convection oven by Apollo® cooks and browns like a conventional oven in half the time. It includes a stainless steel cook top with three sealed burners. Plenty of storage is found in the contemporary cabinets that come in your choice of Honey Cherry or Honey Cherry with Washed Maple accents including a large pantry for all of your food.

\*Digital satellite programming requires a subscription to a digital service provider.

**WEB** Select a Key Feature

The **WEB** icon designates a Winnebago Industries Key Feature. For further in-depth information and photos, use the Drop-down Menu or click on the 'Key Features' page at [winnebagoind.com](http://winnebagoind.com).



**PANTRY** A four-door refrigerator/freezer and two slideout pantries are available on the 39W.



**RANGE** The stainless steel range top cleans up as easily as it cooks.



**DINETTE** The dinette offers additional underseat storage and quickly converts into a comfortable bed.



**FULL-EXTENSION DRAWER SLIDES** Drawers are sized to maximize storage, hold tight with positive latches and open fully for easy access to stored items.



### SMARTSPACE

The Winnebago Destination is more spacious by design. Only Winnebago Industries employs the SmartSpace™ design philosophy to make the most of the available interior space and amenities in each coach. Rethinking the way motor home features are packaged leads to innovative features like TrueAir® residential central air conditioning.

TrueAir uses a Coleman®-Mach® cooling unit that cools 40% faster and runs 10% quieter than traditional roof air units. The cooling unit is located in the basement, eliminating condensation runoff and creating a lower vehicle profile. A heat pump is also available to warm the coach on cool mornings without starting the furnace.

Other SmartSpace features include the OnePlace® systems center, PowerLine® energy management system and the TrueLevel™ holding tank monitoring system.



**SOFA/SLEEPER** Guests will love the new FlexAir™ Sleep System. A queen-size mattress with an electric pump stores beneath the sofa and inflates in minutes for a comfortable night's sleep.



**WEB TRUEAIR**

Get residential cooling comfort from TrueAir residential central air conditioning.



**WEB POWERLINE**

This energy management system monitors electrical usage and automatically cycles appliances on and off to prevent power overloads.



**WEB ONEPLACE**

This complete systems center places frequently used switches, gauges and controls in one central location.



**WEB TRUELEVEL** Eliminate tank-level guesswork with our exclusive TrueLevel holding tank monitoring system. It incorporates detector cells that detect liquid levels from outside the tank. No probes means no more corrosion, just accurate readings time after time.

## CAB COMFORT

The cab is geared for driver and passenger comfort alike with controls close at hand and a spacious area with storage and flip-up table tops for the passenger. The Flexsteel® cab seats are perfectly designed for extended trips on the road. Because of the mid-coach entry, the cab area provides a more comfortable and spacious setting with no need for a step-well cover.

The Destination is easy to maneuver using the rearview monitor with one-way audio and the available side-view video cameras. Flip a switch to light the auxiliary lamps to see the way when backing in the dark. A one-piece windshield gives you a complete view of the road.

The RV Radio® includes AM/FM stereo, CD player, weather band, and an auxiliary input for your iPod/MP3 player. Adjust the stereo using the steering wheel remote or the handheld remote from the living area.



## WEB RV•RADIO®



**CAB SEATS** Flexsteel cab seats come in UltraLeather and offer an available six-way power pedestal for the driver and an available foot rest for the passenger.



**REARVIEW MONITOR** You'll feel more confident when backing and maneuvering with the rearview monitor.



**WARDROBE** Pack your clothes in a large wardrobe with extra drawers.

### SLEEP SOUNDLY

Make yourself at home in the bedroom featuring a queen-size bed or an available king-size bed (39W only). Beneath the bed on the 37G you'll find easily accessible storage for some of your larger items. Windows on both sides of the bedroom create a spacious feeling and provide great cross-coach ventilation. Abundant cabinetry and a large wardrobe make it easy to pack for longer trips.



**UNDERBED STORAGE** Lift the bed to reveal a hidden storage compartment that's great for extra blankets and pillows (37G only).

## AMENITIES EVERYWHERE

A walk-around queen-size bed and spacious flat-floor design help you feel right at home in the bedroom. The 39W offers a bench seat and an available king-size bed so you can sleep like royalty.

Catch the news before you snooze on the 20" LCD bedroom TV. It connects to the DVD player in the available bedroom stereo system for even more viewing options. The stereo system includes AM/FM radio, a CD player and alarm clock to get you up and ready for the new day. Connect headphones or an MP3 player for a more personal music experience.

Getting ready for a night out is a pleasure with a well-lit, mirrored vanity. The shower has a flexible showerhead to fit you perfectly.



39W Windy Pines with Honey Cherry/Washed Maple



### WASHER/ DRYER

Wash your clothes at your convenience on the road in the available washer/dryer.



**SHOWER** The spacious shower features a dual-control faucet for precision temperature control.



**VANITY** Apply makeup in front of the handy vanity.

## SIMPLE STORAGE

There's a place for everything in your Destination. Smart Storage™ provides large, pass-through storage bays for oversized items like chairs and golf clubs. Side-hinged compartment doors make loading those items even easier. The compartments feature a rotocast lining that is exceptionally strong and is easy to clean.

An exterior service center houses water and electrical components for quick and easy hookups at the campground. Large, color-coded labels make identifying connection points a snap. Use the QuickPort® service connection hatch to close the service door with hoses attached.

Control the automatic leveling jacks using the main controls by the entrance door or the additional switch in the service bay that lets you watch the jacks lower onto the jack pads.



**FULL-BODY PAINT** Give your Destination a distinct look with a full-body paint scheme.



**EXTERIOR STORAGE** Smart Storage provides room for all your gear in pass-through storage compartments.



**WEB** **QuickPort** Shut the service compartment door with hookups connected using the QuickPort service connection hatch.



**KEYONE** Open the entrance door, storage compartments and fuel door with the same key.



**SERVICE CENTER** A wash station lets you rinse off muddy shoes before entering the coach.



PUSHER LUXURY AND CONVENIENCE WITH  
YOUR CHOICE OF GAS OR DIESEL.



## WORKHORSE UFO CHASSIS

Get pusher performance with the convenience of a gas engine. The all-new Workhorse UFO chassis gives you pusher power with a rear GM Vortec 8.1L gas engine. It delivers 340-hp and 455 lb.-ft. of torque for your toughest climbs. Combined with an Allison 2100 Series 6-speed transmission, the Workhorse UFO chassis brings the GVWR up to an impressive 26,000 pounds — the same GVWR of many traditional diesel pushers.

Enjoy a smooth ride over rough roads on a Hendrickson® suspension built exclusively for the UFO chassis. A Quadraulic™ braking system employs four-wheel disc brakes for short stopping distance and anti-lock braking in harsh conditions.

- 26,000 lbs. GVWR
- GM Vortec 8.1L engine
- Adjustable pedals
- Allison 2100 Series 6-speed transmission
- Touchpad shifter
- 55° wheel cut
- Bilstein® shocks
- 5,000 lbs. hitch

## FREIGHTLINER XC DIESEL CHASSIS

Diesel enthusiasts can choose the Freightliner XC chassis as the foundation of their Destination. Climb hills with ease using the 340-hp<sup>9</sup> Cummins ISB 6.7L diesel engine with 660 lb.-ft. of torque.

A full-air braking system delivers excellent stopping power, including four-wheel anti-lock brakes for wet or snowy roads. You won't even notice bumps in the road, thanks to the NeWay® front and rear air suspension.

- 27,910 lbs. GVWR
- Cummins ISB 6.7L diesel engine
- Touchpad shifter
- 55° wheel cut
- Allison® 2500MH Series 6-speed transmission
- Sachs Shocks
- 10,000 lbs. hitch

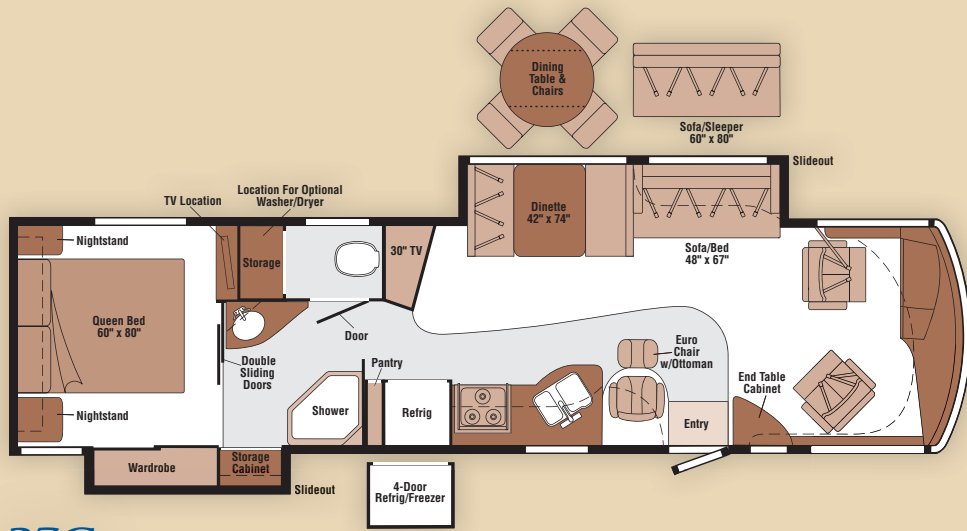


THE LEADER AT EVERY TURN™

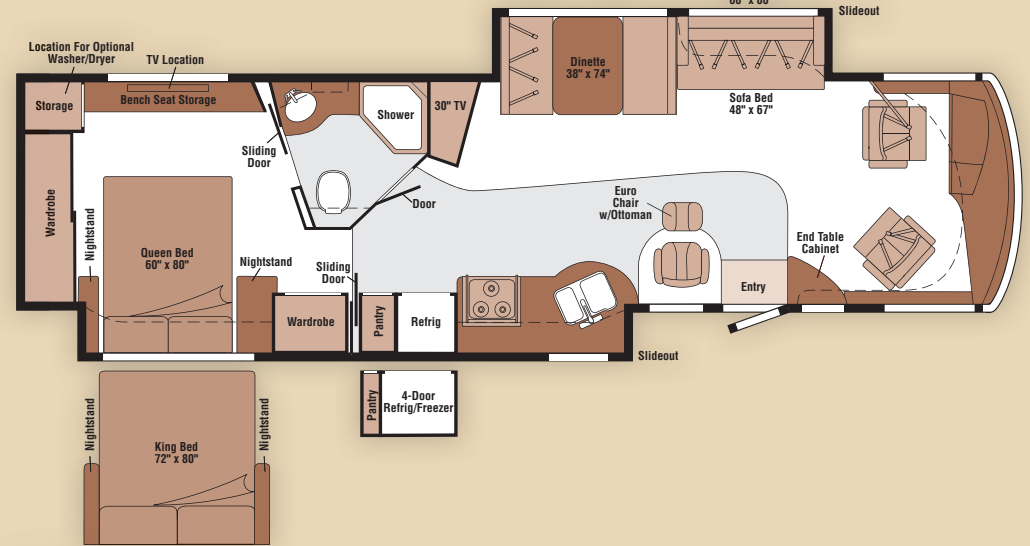
# 08 DESTINATION FLOORPLANS

Carpet
  Vinyl Floorcovering
  Seat Belts

*Note: Dimensions shown are for sleeping space only and may vary due to styling differences. Dashed lines denote overhead storage areas.*



**37G**  
NEW



**39W**  
NEW

# 08 DESTINATION SPECIFICATIONS

WEIGHTS & MEASURES	37G NEW	39W NEW
Length	37'7"	39'3"
Exterior Height <sup>1</sup>	12'4"	12'4"
Exterior Width <sup>2</sup>	8'5.5"	8'5.5"
Exterior Storage <sup>3</sup> (cu. ft.)	111.2	127.6
Awning Length	19'6"	19'6"
Interior Height	7'2.5"	7'2.5"
Interior Width	8'0.5"	8'0.5"
Freshwater Capacity w/Heater <sup>4</sup> (gal.)	92	92
Holding Tank Capacity - Black/Gray <sup>4</sup> (gal.)	62 / 66	62 / 72
LP Capacity <sup>5</sup> (gal.)	28	28
Fuel Capacity (gal.)	100A / 90B	100A / 90B
GCWR <sup>6</sup> (lbs.)	30,000A / 33,000B	30,000A / 33,000B
GVWR (lbs.)	26,000A / 27,910B	26,000A / 27,910B
GAWR - Front (lbs.)	9,500A / 10,410B	9,500A / 10,410B
GAWR - Rear (lbs.)	17,500A / 17,500B	17,500A / 17,500B
Wheelbase	242"	262"

AUTOMOTIVE/CHASSIS	37G	39W
<b>A Workhorse™ Chassis</b> GM Vortec™ 8.1L, 340-hp, Allison® 2100 series 6-speed with two overdrive gears, 145-amp. alternator, 4-wheel ABS, <b>Trailer Hitch</b> ® 5,000-lb. drawbar/500 lbs. maximum vertical tongue weight & 7-pin wiring, <b>Wheel Liners</b> stainless steel	S	S
<b>B Freightliner® Chassis</b> Cummins® ISB 6.7L turbo-charged diesel, 340-hp <sup>9</sup> , rear radiator, Allison 6-speed electronic 2500 MH transmission, NeWay® front & rear air suspension, 170-amp. alternator, engine exhaust brake, 4-wheel ABS, <b>Wheel Liners</b> stainless steel, <b>Exhaust Brake Switch, Trailer Hitch</b> ® 10,000-lb. drawbar/500 lbs. maximum vertical tongue weight & 7-pin wiring	0	0
<b>Leveling Jacks</b> hydraulic, automatic controls, <b>Steering Wheel</b> power/tilt	S	S

CAB AREA & DRIVER CONVENIENCES	37G	39W
<b>C.B. Wire Prep, Cab Seats (UltraLeather™)</b> armrests, lumbar support, multiadjustable slide/recline & swivel, <b>Console Center Cabinet, Cruise Control, Map Lights, Monitor System</b> rearview b/w monitor w/single camera & 1-way audio, <b>Power Door Lock</b> keyless entry, <b>Powerpoints</b> 12-volt DC, <b>Sunvisors, Window (Driver &amp; Passenger)</b> full-slider w/screen, <b>Windshield Wipers</b> intermittent	S	S
<b>Air Horns</b> (w/Freightliner chassis), <b>Cab Seat</b> passenger w/footrest, <b>Cab Seat</b> 6-way power assist (driver), <b>Video Camera System</b> 2 cameras, side-mounted, turn signal activated	0	0

ENTERTAINMENT	37G	39W
<b>Home Theater Sound System</b> amplifier, AM/FM, CD/DVD player, receiver, speakers (5), subwoofer, <b>RV Radio® (Cab)</b> AM/FM stereo/CD, iPod/MP3 input, weather band, remotes, roof-mounted flexible rubber antenna, speakers, <b>Radio Power Switch</b> main/auxiliary battery, <b>Satellite System Ready, Telephone Input</b> interior jacks, <b>TV LCD (Rear)</b> AC 20" color, stereo w/remotes, <b>TV Slim CRT (Front)</b> AC 30" color w/remotes, <b>TV Enhancement Package</b> antenna (amplified), interior jack(s), coax wiring, exterior jack, <b>Video Selection System</b>	S	S
<b>Satellite Dish Antenna</b> RV digital, automatic, dual LNB's, King-Dome® <b>Stereo System (Rear)</b> AM/FM, CD/DVD player, front auxiliary input (plays MP3's), front headphone jack, alarm clock	0	0

INTERIOR	37G	39W
<b>Ceiling</b> fabric, <b>Countertops</b> laminate, <b>Curtain</b> front wraparound, <b>Lights</b> ceiling, wall switches, incandescent throughout coach, <b>Light</b> decorative, dinette, <b>Lights</b> reading, lounge, bedroom area, <b>Mini Blinds</b> galley, bath on 37G, <b>Roof Vent</b> bath area, powered fan, <b>Roof Vent</b> galley, powered ventilator fan, <b>Shades</b> pleated, lounge, dinette & bedroom areas, <b>Windows</b> dual-glazed/thermo-insulated/flush-mounted	S	S

FURNITURE	37G	39W
<b>Chair Lounge (UltraLeather)</b> Euro Recliner w/ottoman, <b>Dinette (Fabric)</b> w/access to storage below, child seat tether anchor, <b>Sofa/Bed (Fabric/UltraLeather)</b> jack knife	S	S
<b>Dining Table &amp; Chairs</b> freestanding (4), <b>Sofa/Sleeper (Fabric/UltraLeather)</b> w/air mattress	0	0

GALLEY	37G	39W
<b>Faucet</b> single-control, <b>Pantry, Range</b> 3-burner, w/convection oven/microwave, Apollo®, <b>Range Hood</b> vented w/light & fan, <b>Refrigerator/Freezer</b> large double-door, Norcold®, <b>Sink Cover</b> wood	S	S
<b>Refrigerator/Freezer</b> 4-door w/icemaker, Norcold	0	0

BATH	37G	39W
<b>Cabinet</b> lavatory, <b>Cabinet</b> linen/storage, <b>Faucet (Lavatory)</b> dual-control, <b>Faucet (Shower)</b> dual-control, flexible showerhead, <b>Light</b> shower, <b>Lights</b> makeup, <b>Shower Door</b> glass	S	S

BEDROOM	37G	39W
<b>Bed</b> queen, innerspring w/underbed storage (NA 39W), bedspread, pillow shams, headboard	S	S
<b>Bed</b> king, innerspring, Serta®	0	0

EXTERIOR	37G	39W
<b>Awning</b> patio, <b>Awning Rails</b> w/rain gutters, <b>Door</b> entrance w/screen door, deadbolt lock, <b>Entrance Door Steps</b> triple, electric w/doorjamb switch, <b>Ladder, Lights</b> porch & stepwell, <b>Fuel-Fill Door</b> locking, <b>Mirrors</b> remote w/defrost, <b>Receptacle</b> AC duplex, <b>Sidewall Skin</b> 1-piece smooth fiberglass, high-gloss, <b>Storage Compartments</b> valance panels, gas struts, TriMark® KeyOne™ System, paddle latch, lights, TV jack	S	S
<b>Awning</b> 19'6" passenger-side rear, electric w/wind sensor (w/full-body paint), <b>Front Protective Mask</b> w/full-body paint	0	0
<b>Awning</b> 8' passenger-side front, electric w/wind sensor (w/full-body paint)	0	0

SYSTEMS	37G	39W
<b>HEATING &amp; A/C - Automotive Heater/Air Conditioner</b> blend air system, <b>Furnace</b> 40,000 BTU, <b>TrueAir® Residential Central Air Conditioning</b>	S	S
<b>TrueAir Residential Central Air Conditioning</b> w/heat pump	0	0
<b>ELECTRICAL - Auxiliary Start Circuit, Batteries (Coach)</b> deep-cycle (2), <b>Battery Disconnect</b> manual, chassis, <b>Battery Disconnect Switch</b> coach, <b>Dual Battery Charge Control</b> automatic, <b>Electrical Distribution System</b> AC & DC breaker panels, converter/charger 55-amp., remote, electric, <b>Generator</b> 5,500-watt, Cummins Onan® Marquis Gold™ (w/Workhorse), <b>Generator/Shoreline Automatic Changeover Switch, Inverter</b> DC/AC, 600-watt, <b>OnePlace® Systems Center</b> wall-mounted, battery condition gauge, PowerLine® energy management display, generator hourmeter gauge, generator start/stop switch, heating & A/C thermostat, holding tank levels, LP tank level, water heater switch & lights, water pump switch, water tank level, <b>Power Cord</b> 50-amp., <b>PowerLine Energy Management System, Service Center (Electrical)</b> cable TV input, power cord, shoreline/generator automatic changeover switch, telephone input, portable satellite dish hookup, QuickPort® service connection hatch, <b>Solar Panel</b> 10-watt battery charger	S	S
<b>Generator</b> 6,000-watt Cummins Onan Quiet Diesel™ (w/Freightliner)	0	0

SYSTEMS	37G	39W
<b>PLUMBING - Drain</b> 1½" water tank, <b>Service Center (Water/Drainage)</b> city water hook-up/tank diverter fill, drain for fresh water system, drainage valves, exterior wash station w/lighted pump switch, holding tank flushing system, 10' sewer hose, QuickPort® service connection hatch, <b>Tank</b> flushing system, black tank only, <b>Tank</b> holding, heated compartment, <b>Tank LP</b> , permanent mount w/gauge, <b>TrueLevel™ Holding Tank Monitoring System, Water Heater</b> 10-gallon electronic ignition, LP gas/120 VAC w/motoraid, <b>Water Pump</b> demand, <b>Water Tank Fill</b> pressurized city hookup w/diverter valve, <b>Water System Filtration Package</b> replaceable filter, filter housing, wrench, <b>Water System Winterization Package</b> water heater bypass valve, water pump diverter valve & siphon tube	S	S
<b>Washer/Dryer Combination</b>	0	0

SAFETY	37G	39W
<b>Assist Bar</b> interior, <b>Assist Handle</b> exterior, <b>Bumpers</b> front & rear, <b>Child Seat Tether Anchor, Detectors/Alarms</b> LP leak, smoke, carbon monoxide, <b>Docking Lamps, Fire Extinguisher</b> 10 BC, <b>Fog Lamps, Ground Fault Interrupter, Lamps</b> auxiliary, rear sides, illumination, <b>Lights</b> high-mount brakelamps, <b>Light(s)</b> courtesy w/wall switch(es), <b>Seat Belts</b> cab, 3-point, <b>Seat Belts</b> lap (in selected areas), <b>Window</b> escape, <b>Windshield</b> one piece, laminated safety glass	S	S

WARRANTY <sup>7</sup>	37G	39W
<b>12-month/15,000-mile basic warranty<sup>8</sup>; 36-month/36,000-mile limited warranty on structure<sup>9</sup>; 10-year limited parts &amp; labor warranty on roof skin<sup>8</sup></b>	S	S

- The height of each model is measured to the top of the tallest standard feature and is based on the curb weight of a typically equipped unit. The actual height of your vehicle may vary by several inches depending on chassis or equipment variations. Please contact your dealer for further information.
- Floorplans feature a wide-body design – over 96". In making your purchase decision, you should be aware that some states restrict access on some or all state roads to 96" in body width. Before making your purchase decision, you should confirm the road usage laws in the states of interest to you.
- The load capacity of your motor home is designated by weight, not by volume, so you cannot necessarily use all available space when loading your motor home.
- Capacities are based on measurements prior to tank installation. Slight capacity variations can result due to installation applications.
- Capacities shown are tank manufacturer's listed water capacity (W.C.). Actual filled LP capacity is 80% of listing due to overfilling prevention device on tank.
- Actual towing capacity is dependent on your particular loading and towing circumstances which includes the GVWR, GAWR, and GCWR as well as adequate trailer brakes. Please refer to the Operator's Manual of your vehicle for further towing information.
- See separate chassis warranty.
- See your dealer for complete warranty information.
- Models manufactured before 4/23/07 feature a 300-hp Cummins ISB 6.7L diesel engine.

NA Not Available

S Standard

0 Optional

Not all items available in combination. See dealer for details.

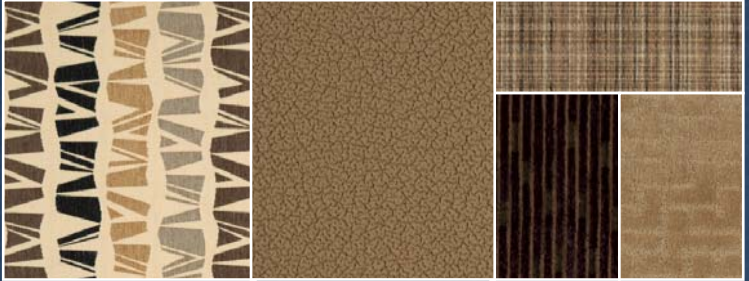
Winnebago Industries® continuing program of product improvement makes specifications, equipment, model availability, and prices subject to change without notice. Comparisons to other motor homes are based on the most recent information available at printing.

## INTERIOR DECOR

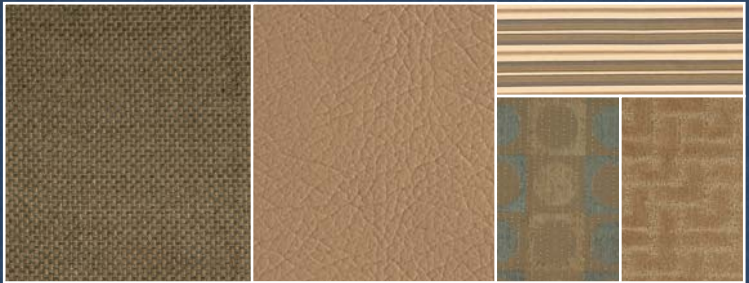
Choose from three fabric selections and two cabinet wood choices with hidden hinges.



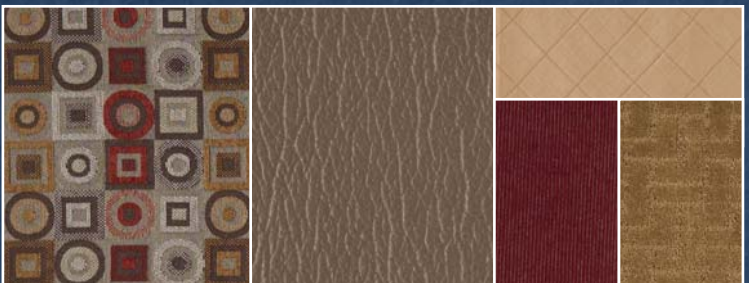
MAIN	ULTRA-LEATHER	BEDSPREAD	
		ACCENT	CARPET



Manchester w/available Ragweed UltraLeather™



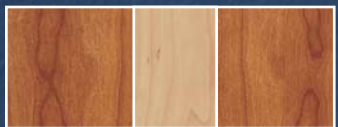
Windy Pines w/available Timber UltraLeather



Roasted Pepper w/available Pine Cone UltraLeather



Honey Cherry



Honey Cherry w/Washed Maple

## EXTERIOR PAINT WITH GRAPHICS



Limestone



Red Twig



## FULL-BODY PAINT



Granite



Golden Beige



Silver Sky



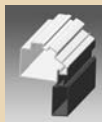
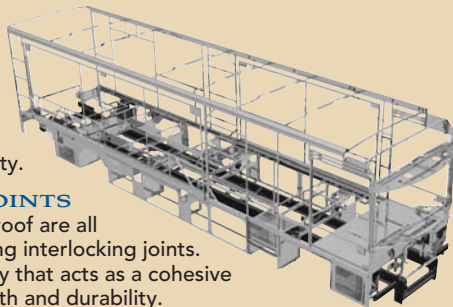


**BUILT BY WINNEBAGO INDUSTRIES.  
BUILT TO LAST.**

Winnebago motor homes are built by Winnebago Industries, the company that defined motor homes. The company that built its reputation on quality construction. The company that transformed the motor home concept into a way of life.

Today, Winnebago Industries brings that reputation for quality and its 49-year history of motor home innovation to the design and construction of every motor home. It's all a part of SuperStructure,<sup>®</sup> our exclusive system of proprietary structural components that instills each motor home with improved strength and durability.

**SOLID FOUNDATION** Steel and aluminum truss work provides a solid, flat foundation for the floor and sidewalls. Winnebago Industries engineers also take special care to distribute the weight of components to ensure proper handling and stability.



**INTERLOCKING JOINTS**

The floor, sidewalls and roof are all integrally connected using interlocking joints. This creates a coach body that acts as a cohesive unit for improved strength and durability.

**E-COATING** Winnebago Industries employs an exclusive 12-stage automotive-style dip tank process to apply an advanced electrodeposition coating on critical steel components for superior corrosion protection.



**WEB**

**THERMO-PANEL<sup>®</sup> SIDEWALLS** Invented by Winnebago Industries, Thermo-Panel construction combines a fiberglass panel, high-density, block-foam insulation and aluminum support structures to create some of the most durable, lightweight sidewalls in the industry.

**ATTENTION TO DETAIL** Whether it's sending every coach through a high-pressure water tunnel to check for leaks or labeling each individual wire and bar-coding parts to save time and frustration during service, Winnebago Industries considers every detail to ensure your Winnebago motor home provides you with years of pleasure.

**STRONG AS STEEL** Appliances are secured directly to embedded steel plates for added safety. Windshields are also mounted in steel with an automotive-style sealant; lesser designs use a rubber gasket to mount the windshield in fiberglass.



1-year-old Winnebago fiberglass roof



1-year-old competitor's rubber roof

**FIBERGLASS ROOF** The Destination features a crowned, one-piece fiberglass roof, backed with a 10-year limited parts-and-labor roof skin warranty. Fiberglass offers superior strength, attractiveness and durability over the rubber roofs found on many competitive models which can chalk, streak and degrade over time. Fiberglass also provides increased puncture and tear resistance.



**TAKE A TOUR** We're proud of our process, state-of-the-art facilities and the people who make Winnebago Industries number one. We invite you to visit our factory in Forest City, Iowa, for a first-hand look at the dedication and technology behind every motor home we build.



**RECOGNIZED QUALITY** The Recreation Vehicle Dealer Association annually rates RV manufacturers and awards the Quality Circle award to manufacturers who provide exceptional products, service and support. Winnebago Industries is proud to be the only manufacturer to receive this award every year since its inception.



**COMMITTED TO SERVICE** We back our motor homes with the industry's best service after the sale.

- 12-month/15,000-mile basic limited warranty
- 36-month/36,000-mile warranty on structure
- Standard 10-year limited parts-and-labor roof skin warranty
- Complimentary 24-hour roadside assistance program
  - RV Technical Assistance Hotline
  - RV Service Appointment Assistance
  - Emergency Trip Interruption
  - Emergency Message Service
  - Nationwide Trip Routing
  - Fee-Free Travelers Cheques
- TripSaver Fast Track Parts. TripSaver guarantees that in-stock warranty parts ship directly to your dealer within 24 hours.
- National dealer service network



**TRIP Saver**  
FAST TRACK PARTS



**WIT CLUB** Winnebago owners are like family. Joining the Winnebago-Itasca Travelers is a great way to meet and travel with other Winnebago enthusiasts.

- Members enjoy:
- Caravans and rallies
  - Local and state group activities
  - RV travel benefits



**WINNEBAGOIND.COM**  
Visit us on the web for more info on all of our motor homes, the latest product updates and a host of web-exclusive content.

For Sales and Service Information Contact:

Built proudly by



NYSE listing: WGO

©2007 Winnebago Industries, Inc.

Printed in USA

Seat belts are your most important hookup. Always buckle up.