

# 08 ASPECT







**SMARTSPACE™**  
WEB

### SIZED FOR MAXIMUM FUN.

Have more fun in the full-featured, easy-to-drive 2008 Winnebago Aspect.® Its sleek design and carefully selected amenities make it perfect for long weekends or even longer vacations. Two unique models give you more of what you want in your home on the road, including a U-shaped dinette (shown here) on the 26A,

and a day bed that expands your leisure space in the 29H. It's all part of the SmartSpace™ design philosophy that allows us to make the most of the available space. Live large in the Winnebago Aspect.



## LIVE LARGE

Though sized for easy handling, the Aspect is big on residential features. The entertainment center includes an AM/FM stereo, iPod/MP3 hookup, and a CD/DVD player so you can watch a movie on the 12-volt 19" LCD TV without generator or shoreline power. Enjoy that at-home feeling wherever you go in comfortable furniture with available UltraLeather™ and day/night pleated shades. Heating and air conditioning are both controlled by a residential-style wall thermostat for accurate climate control.

You'll have plenty of hot water with the standard LP water heater or choose the available electric/LP water heater with EMS (energy management system). This system temporarily postpones the electric operation of the water heater while the microwave is running to minimize the possibility of tripping a campground circuit breaker. Add the 300-watt inverter for 110-volt power and watch the available 27" LCD TV when a shoreline source is not available.

**WEB** Select a Key Feature

The **WEB** icon designates a Winnebago Industries Key Feature. For further in-depth information and photos, use the Drop-down Menu or click on the 'Key Features' page at [winnebagoind.com](http://winnebagoind.com).



**ENTERTAINMENT** The overhead cab area provides additional storage and an entertainment center with a 19" LCD TV or available 27" LCD TV. Select the King-Dome® RV digital in-motion satellite system for even more viewing options on the road.



**GALLEY** The full-featured galley includes a slideout pantry on the 26A, a double-bowl sink with cover and other space-saving features that make meal preparation quick and easy. A water filtration system is also available.



**FULL-EXTENSION DRAWER SLIDES** Drawers are sized to maximize storage, hold tight with positive latches and open fully for easy access to stored items.



**DINETTE** The U-shaped dinette table sits on a single pedestal for more legroom and easily converts into a comfortable bed (26A).





**LIVE IT UP**

Choose the 29H floorplan and enjoy the abundant living space created by front and rear slideouts. The rear bed converts from a comfortable lounge to a queen-size bed to give you more flexibility on trips. It's also a great place to watch a movie on the available 14" LCD TV.

Other thoughtful touches throughout the motor home include a skylight in the shower, vinyl floorcovering in the galley and bath areas, and a child safety-seat tether anchor in the dinette. The unique layout of the 29H also incorporates a large, fully enclosed rear bath, full-size wardrobe and a spacious chest of drawers.

**DAY BED** By day it's a comfortable lounge. At night you'll get a great night's sleep in the queen-size bed.



**BEDROOM TV** The available 14" LCD TV in the 29H swivels out of the way when not in use. It is mounted to the wall near the mirrored wardrobe and chest of drawers.



## HOP IN

The Aspect begs you to go for a drive. You'll find all the controls, including power windows and door locks, positioned for a comfortable driving experience in the fully-adjustable, high-back cab seats. Choose the available Leather Laser-Wave dash appliqué to give your Aspect a distinct look and feel.

While you drive, listen to the radio, CDs or weather updates on the RV Radio.® Large buttons and two convenient remotes make it easy to operate. There is even an auxiliary input for your iPod/MP3 player.

Upgrade your RV radio with the available Sirius® Satellite radio package for 130 channels of crystal clear programming. A six-month subscription is complimentary with this package. This system is also iPod ready so you can listen to, and control, your iPod through the dash stereo.

**WEB SIRIUS® RV•RADIO**



**REARVIEW MONITOR** Gain peace of mind when backing and maneuvering by using the available rearview monitor, which mounts neatly between the sunvisors.



**STORAGE** The Aspect features large, convenient exterior storage bays for easy access to all your gear.



**EXTERIOR ENTERTAINMENT CENTER** Enjoy your favorite music with the available exterior entertainment center. It features an AM/FM stereo, CD player, 12-volt DC powerpoint, TV jack and a removable table.



**WEB TRUELEVEL** Eliminate tank-level guesswork with our exclusive TrueLevel™ holding tank monitoring system. It incorporates detector cells that determine liquid levels from outside the tank. No probes means no more corrosion, just accurate readings time after time.



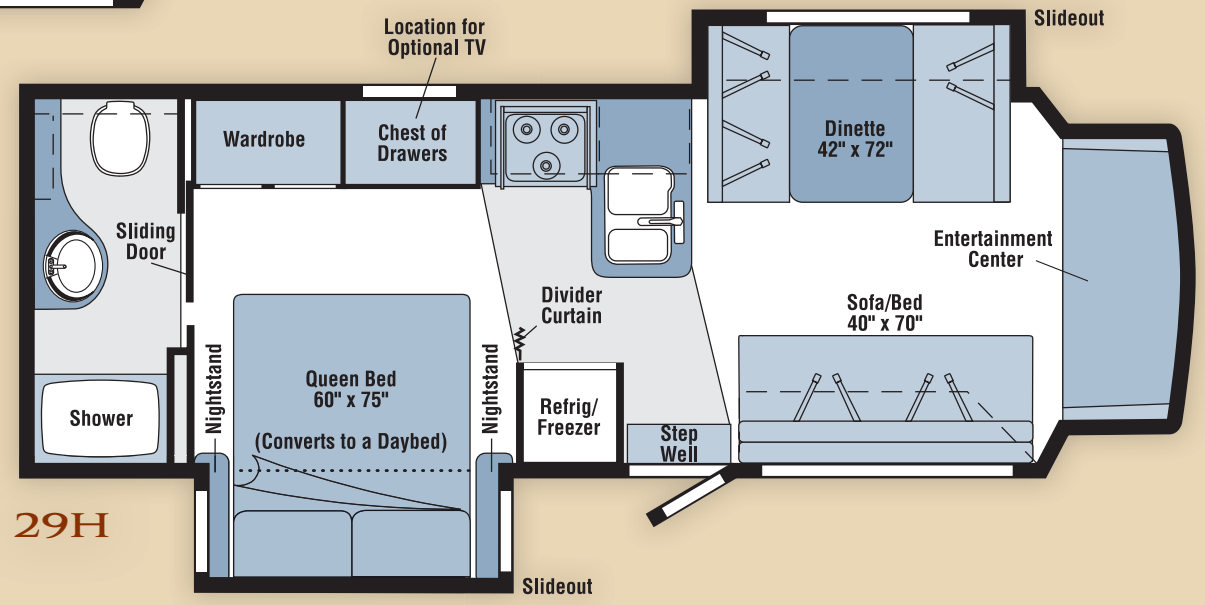
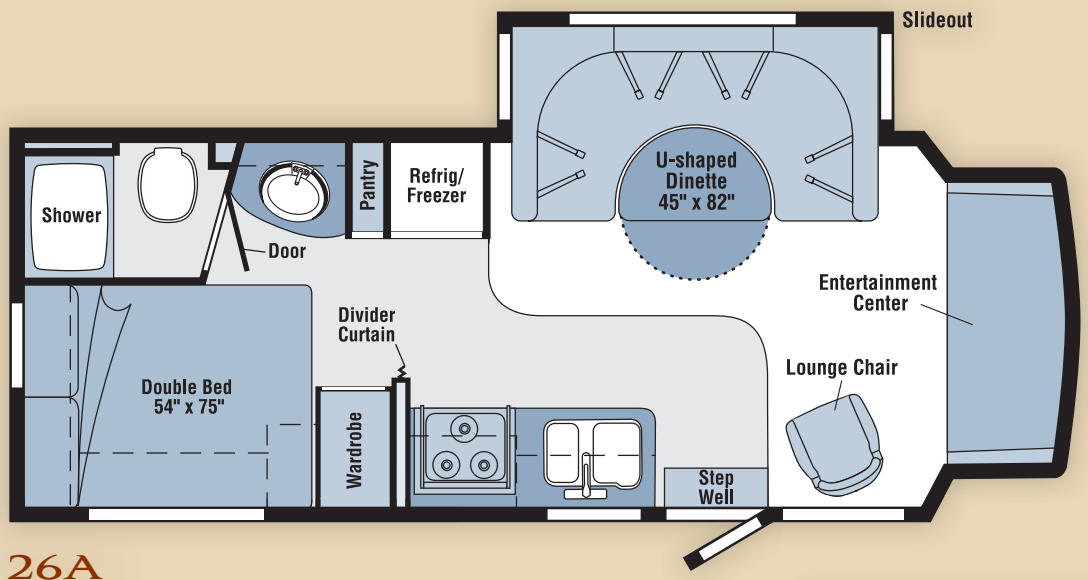
**LEVELING JACKS** Control the automatic leveling jacks from the entrance door so you can watch them lower into position.



**CAB SEATS** Enjoy the ride in comfortable cab seats with armrests, fixed lumbar support, slide/recline adjustments and available UltraLeather.

# 08 ASPECT FLOORPLANS

Carpet
  Vinyl Floorcovering
  Seat Belts
 
 Note: Dimensions shown are for sleeping space only and may vary due to styling differences. Dashed lines denote overhead storage areas.



# 08 ASPECT SPECIFICATIONS

WEIGHTS & MEASURES	26A	29H
<b>Length</b>	26'7"	29'11"
<b>Exterior Height<sup>1</sup></b>	10'5"	10'5"
<b>Exterior Width</b>	7'11.2"	7'11.2"
<b>Exterior Storage<sup>2</sup></b> (cu. ft.)	43.1	38.3
<b>Awning Length</b>	17'	19'
<b>Interior Height</b>	6'5"	6'5"
<b>Interior Width</b>	7'8"	7'8"
<b>Freshwater Capacity w/Heater<sup>3</sup></b> (gal.)	43	44
<b>Holding Tank Capacity - Black/Gray<sup>3</sup></b> (gal.)	29 / 37	36 / 29
<b>LP Capacity<sup>4</sup></b> (gal.)	18	18
<b>Fuel Capacity</b> (gal.)	55	55
<b>GCWR<sup>5</sup></b> (lbs.)	20,000	20,000
<b>GVWR</b> (lbs.)	14,050	14,050
<b>GAWR - Front</b> (lbs.)	4,600	4,600
<b>GAWR - Rear</b> (lbs.)	9,450	9,450
<b>Wheelbase</b>	182"	220"

AUTOMOTIVE/CHASSIS	26A	29H
<b>Ford® E450 Chassis</b> – 6.8L Super-Duty V10 SOHC Triton® engine, 305-hp, automatic transmission, TorqShift™ 5-speed w/tow/haul feature, 4-wheel ABS, 130-amp. alternator, dual air bags	S	S
<b>Trailer Hitch<sup>4</sup></b> 5,000-lb. drawbar/350 lbs. maximum vertical tongue weight & wiring, 7-pin connector, <b>Wheel Liners</b> stainless steel	S	S
<b>Air Springs</b> auxiliary rear, <b>Leveling Jacks (Front &amp; Rear)</b> HWH® hydraulic, automatic, <b>Wheels</b> stylized aluminum	0	0

CAB AREA & DRIVER CONVENIENCES	26A	29H
<b>Beverage Holder, Cab Seats (Fabric)</b> armrest, fixed lumbar support, multiadjustable slide/recline, <b>Cruise Control, Curtain</b> cab divider, <b>Power Door Locks</b> driver/passenger/main entry, <b>Power Cab Windows, Powerpoint 12-Volt DC/Cigarette Lighter, Steering Wheel</b> tilt w/power-assist, <b>Sunvisors, Trim Panels</b> driver & passenger doors	S	S
<b>Cab Seats</b> UltraLeather™ <b>Instrument Panel</b> appliqué, <b>Leather Laser-Wave, Monitor System</b> rearview w/single camera, monitor, Audiovox®	0	0

ENTERTAINMENT	26A	29H
<b>RV Radio® (Cab)</b> AM/FM stereo/CD player, iPod/MP3 input, weatherband, speakers (4) w/remotes, Jensen™ <b>Radio Power Switch</b> main/auxiliary battery, <b>TV</b> 12-volt, 19" LCD, stereo w/remote, <b>Stereo System (Coach)</b> AM/FM radio, CD/DVD player, iPod/MP3 input, speakers (2), subwoofer, <b>TV Enhancement Package</b> 12-volt DC powerpoint, interior jack, coax wiring, cable input	S	S
<b>Entertainment Center (Exterior)</b> AM/FM radio w/CD player & remote, DC receptacle, AC duplex receptacle, TV jack, radio antenna, speakers (2), lockable compartment, removable TV table, <b>Satellite Radio</b> Sirius® includes 6-month paid subscription, iPod interface connector, <b>Satellite Dish Antenna</b> RV digital, manual, <b>Satellite System</b> King-Dome® RV digital, in-motion w/elevation sensing unit, <b>TV</b> 27" LCD, color AC, stereo w/remote	0	0
<b>TV</b> 14" LCD stereo w/remote, 12-volt DC	0	0

INTERIOR	26A	29H
<b>Ceiling</b> fabric, <b>Countertops</b> laminate, <b>Lights</b> ceiling, incandescent w/wall switches, <b>Powerpoint 12-Volt DC, Shades</b> day/night pleated (lounge, dinette & bedroom), <b>Mini Blinds</b> (galley & bath), <b>Roof Vent</b> nonpowered (lounge) powered (bath), <b>Telephone Input</b>	S	S
<b>Roof Vent</b> powered ventilator fan, lounge, <b>Windows</b> dual-glazed/thermo-insulated	0	0
<b>Light</b> decorative dinette area	S	S

FURNITURE	26A	29H
<b>Dinette</b> w/access to storage below	S	S
<b>Sofa/Bed</b> 70" x 40", w/throw pillow	S	S
<b>Chair</b> lounge, hoop-base, swivel/glider, <b>Dinette</b> U-shaped w/access to storage below, slide-out baskets	S	S
<b>UltraLeather Furniture Package</b> cab seats, dinette, sofa (29H), lounge chair (26A)	0	0

GALLEY	26A	29H
<b>Faucet</b> single-control, Moen®, <b>Microwave/Convection Oven</b> Sharp®, <b>Range Top</b> 3-burner, drawer below, <b>Range Hood</b> vented w/light & fan, <b>Refrigerator/Freezer</b> large, double-door, 2-way, Norcold®, sink cover	S	S
<b>Countertop</b> flip-up extension	S	S
<b>Pantry</b>	S	S
<b>Range</b> 3-burner w/oven, drawer below, Magic Chef®, <b>Water Filtration System</b>	0	0

BATH	26A	29H
<b>Cabinet</b> lavatory, <b>Cabinet(s)</b> medicine, <b>Faucet (Lavatory)</b> single-control, <b>Faucet (Shower)</b> dual-control w/flexible showerhead, <b>Light</b> shower, <b>Shower Door</b> retractable, <b>Skylight</b>	S	S

BEDROOM	26A	29H
<b>Bed</b> double, removable bed cover, pillows, pillow shams, throw pillow	S	S
<b>Day Bed</b> queen, split mattress	S	S

EXTERIOR	26A	29H
<b>Awning Rails</b> w/rain gutters, <b>Door</b> entrance w/separate screen door, deadbolt lock, <b>Entrance Door Step</b> single, manual, <b>Ladder, Light</b> porch w/interior switch, <b>Mirrors</b> plate-mounted, manual adjust w/convex, <b>Mudflaps</b> rear, <b>Receptacle</b> AC duplex, <b>Running Boards</b> fiberglass w/front mud guard, <b>Sidewall Skin</b> 1-piece smooth fiberglass, <b>Storage Compartments</b> w/trunk liner	S	S
<b>Awning patio, Entrance Door Step</b> single, electric w/doorjamb switch, <b>Mirrors</b> plate-mounted, electric/remote w/defroster, white (silver w/deluxe graphics)	0	0

SYSTEMS	26A	29H
<b>HEATING &amp; A/C – Automotive Heater/Air Conditioner</b> blend air system, <b>Air Conditioner (Roof)</b> 13,500 BTU, ceiling-ducted w/wall thermostat, <b>Furnace</b> 30,000 BTU, low-profile	S	S
<b>A/C Heat Pump</b>	0	0
<b>ELECTRICAL – Auxiliary Start Circuit, Battery (1) (Coach)</b> Group 24 deep-cycle, <b>Battery (Coach) Disconnect System, Dual Battery</b> charge control (automatic), <b>Electrical Distribution System</b> AC breaker panels, DC automotive fuses, 45-amp. converter/charger, <b>Generator Prep Kit, Monitor Panel</b> battery condition gauge, generator hourmeter gauge, generator start/stop switch, holding tank levels, LP tank level, water heater lights, water heater switch, water pump switch, water tank level, <b>Power Cord</b> 30-amp., 25', <b>Service Center (Electrical)</b> cable input, power cord, portable satellite dish hookup	S	S
<b>Batteries (2)</b> Group 24 deep-cycle, <b>Generator</b> 4,000-watt Cummins Onan® MicroQuiet™ gas, <b>Inverter</b> DC/AC, 300-watt	0	0
<b>PLUMBING/LP – Drain</b> water tank, 1" brass ball valve w/lever, <b>Service Compartment (Drainage/Water)</b> pressurized city water hookup/tank diverter fill, drainage valves, 10' sewer hose, <b>Tank</b> holding, heated compartment, <b>Tank LP</b> , permanent mount w/gauge, <b>TrueLevel™ Holding Tank Monitoring System, Water Heater</b> 6-gallon electronic ignition, LP gas, <b>Water System Winterization Package</b> water heater bypass valve & siphon tube, <b>Water Pump</b> demand, permanent magnet motor w/diaphragm	S	S
<b>Exterior Wash Station</b> w/lighted pump switch, <b>Water Heater</b> 6-gallon electronic ignition, 120 VAC/LP gas w/energy management system	0	0

SAFETY	26A	29H
<b>Airbags</b> driver & passenger, <b>Assist Bar</b> interior, <b>Assist Handle</b> exterior, soft-touch, <b>Bumpers</b> front & rear, <b>Child Seat Tether Anchor, Courtesy Light(s)</b> interior, <b>Detectors/Alarms</b> LP leak, smoke, carbon monoxide, <b>Fire Extinguisher</b> 10 BC, <b>Ground Fault Interrupter, Lights</b> high-mount brakelamps, <b>Seat Belts</b> cab, 3-point adjustable, <b>Seat Belts</b> lap (in selected areas), <b>Window</b> escape	S	S

WARRANTY <sup>6</sup>	26A	29H
<b>12-month/15,000-mile basic warranty<sup>7</sup>; 36-month/36,000-mile limited warranty on structure<sup>7</sup>; 10-year limited parts &amp; labor warranty on roof skin<sup>7</sup></b>	S	S

- The height of each model is measured to the top of the tallest standard feature and is based on the curb weight of a typically equipped unit. The actual height of your vehicle may vary by several inches depending on chassis or equipment variations. Please contact your dealer for further information.
- The load capacity of your motor home is designated by weight, not by volume, so you cannot necessarily use all available space when loading your motor home.
- Capacities are based on measurements prior to tank installation. Slight capacity variations can result due to installation applications.
- Capacities shown are tank manufacturer's listed water capacity (W.C.). Actual filled LP capacity is 80% of listing due to overfilling prevention device on tank.
- Actual towing capacity is dependent on your particular loading and towing circumstances which includes the GVWR, GAWR, and GCWR as well as adequate trailer brakes. Please refer to the Operator's Manual of your vehicle for further towing information.
- See separate chassis warranty.
- See your dealer for complete warranty information.

NA Not Available

S Standard

O Optional

Not all items available in combination. See dealer for details.

Winnebago Industries® continuing program of product improvement makes specifications, equipment, model availability, and prices subject to change without notice. Comparisons to other motor homes are based on the most recent information available at printing.

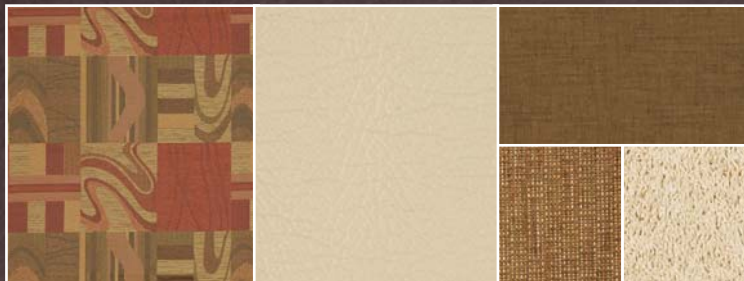


## INTERIOR DECOR

Choose from three fabric selections and two cabinet wood choices.



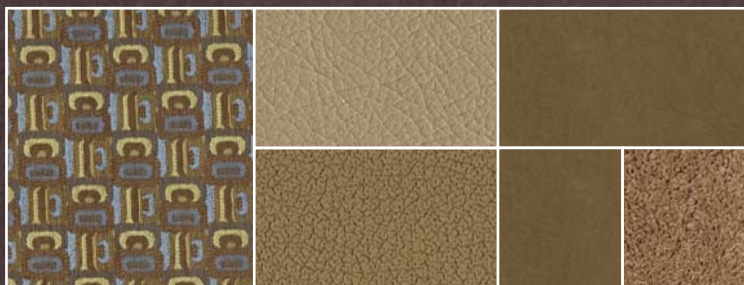
MAIN	ULTRA-LEATHER	BEDSPREAD	
		ACCENT	CARPET



Cinnamon Spice w/available Buff UltraLeather™



Silverscreen w/available Papyrus UltraLeather



Peppergrass w/available Timber/Ragweed UltraLeather



Washed Maple



Sierra Maple



## STANDARD GRAPHICS



Metallic Gold



Granite Metallic



## FULL-BODY PAINT

*Full-body Paint option includes front fiberglass running boards and wheel lips.*



Seamist



Wine





**BUILT BY WINNEBAGO INDUSTRIES.  
BUILT TO LAST.**

Winnebago motor homes are built by Winnebago Industries, the company that defined motor homes. The company that built its reputation on quality construction. The company that transformed the motor home concept into a way of life.

Today, Winnebago Industries brings that reputation for quality and its 49-year history of motor home innovation to the design and construction of every motor home. It's all a part of SuperStructure<sup>®</sup>, our exclusive system of proprietary structural components that instills each motor home with improved strength and durability.

**SOLID FOUNDATION** Steel and aluminum truss work provides a solid, flat foundation for the floor and sidewalls. Winnebago Industries engineers also take special care to distribute the weight of components to ensure proper handling and stability.



**INTERLOCKING JOINTS**

The floor, sidewalls and roof are all integrally connected using interlocking joints. This creates a coach body that acts as a cohesive unit for improved strength and durability.

**E-COATING** Winnebago Industries employs an exclusive 12-stage automotive-style dip tank process to apply an advanced electrodeposition coating on critical steel components for superior corrosion protection.



**WEB**

**THERMO-PANEL<sup>®</sup> SIDEWALLS** Invented by Winnebago Industries, Thermo-Panel construction combines a fiberglass panel, high-density, block-foam insulation and aluminum support structures to create some of the most durable, lightweight sidewalls in the industry.

**ATTENTION TO DETAIL** Whether it's sending every coach through a high pressure water tunnel to check for leaks or labeling each individual wire and bar-coding parts to save time and frustration during service, Winnebago Industries considers every detail to ensure your Winnebago motor home provides you with years of pleasure.

**STRONG AS STEEL** Appliances are secured directly to embedded steel plates for added safety.



1-year-old Winnebago fiberglass roof



1-year-old competitor's rubber roof

**FIBERGLASS ROOF** The Aspect features a crowned, one-piece fiberglass roof, backed with a 10-year limited parts-and-labor roof skin warranty. Fiberglass offers superior strength, attractiveness and durability over the rubber roofs found on many competitive models which can chalk, streak and degrade over time. Fiberglass also provides increased puncture and tear resistance.



**TAKE A TOUR** We're proud of our process, state-of-the-art facilities and the people who make Winnebago Industries number one. We invite you to visit our factory in Forest City, Iowa, for a first-hand look at the dedication and technology behind every motor home we build.



**RECOGNIZED QUALITY** The Recreation Vehicle Dealer Association annually rates RV manufacturers and awards the Quality Circle award to manufacturers who provide exceptional products, service and support. Winnebago Industries is proud to be the only manufacturer to receive this award every year since its inception.



**COMMITTED TO SERVICE** We back our motor homes with the industry's best service after the sale.

- 12-month/15,000-mile basic limited warranty
- 36-month/36,000-mile warranty on structure
- Standard 10-year limited parts-and-labor roof skin warranty
- Complimentary 24-hour roadside assistance program
- TripSaver Fast Track Parts. TripSaver guarantees that in-stock warranty parts ship directly to your dealer within 24 hours.
- National dealer service network



**WIT CLUB** Winnebago owners are like family. Joining the Winnebago-Itasca Travelers is a great way to meet and travel with other Winnebago enthusiasts. Members enjoy:

- Caravans and rallies
- Local and state group activities
- RV travel benefits



**WINNEBAGOIND.COM** Visit us on the web for more info on all of our motor homes, the latest product updates and a host of web-exclusive content.

For Sales and Service Information Contact:

Built proudly by



NYSE listing: WGO