

**NOT ALL MOTOR HOMES ARE CREATED EQUAL.** As you take a closer look, you'll see that there is much more to the Winnebago Minnie Winnie than a long list of standard features and compelling floorplans. Beneath it all you'll find a SuperStructure® foundation of strength and durability, and Winnebago Industries' recognized service and warranty support.



**WE ARE COMMITTED TO SERVICE.** We back our motor homes with the best after-the-sale service in the industry. This includes a 12-month/15,000-mile basic limited warranty; 36-month/36,000-mile warranty on structure; standard 10-year limited parts-and-labor roof skin warranty; and complimentary 24-hour Roadside Assistance Program. TripSaver Fast Track Parts guarantees that in-stock warranty parts ship directly to your dealer within 24 hours. Winnebago Industries has a nationwide dealer service network.



**CERTIFIED QUALITY.** Recreation Vehicle Dealer Association members annually rate RV manufacturers on the quality of their products, and on their sales and service support. Winnebago Industries has achieved the coveted Quality Circle Award every year since its inception, the only RV manufacturer to do so.



**WARNING: JOINING WIT HAS BEEN KNOWN TO CAUSE EXCESSIVE FUN.** Winnebago-Itasca Travelers (WIT) is a club for owners of Winnebago Industries motor homes. WIT is a great way to meet people and offers you caravans and rallies, local and state group activities, and other benefits for RVers.



**A**  
(close-up)



**SUPERSTRUCTURE** is the term given to Winnebago Industries' structural motor home design and construction. Rather than a single component, it is the culmination of design integration that incorporates steel and aluminum substructures; composite-design laminated floor risers; interlocking joint technology; and Thermo-Panel® floor, roof and sidewalls to form a high-strength, durable vehicle body.

Thermo-Panel manufacturing combines a durable exterior panel with welded aluminum support substructures. The substructures are embedded in a high-density, block-foam insulation core to create a strong, durable, yet lightweight sidewall. Just another Winnebago Industries' invention.

**A** Interlocking joint construction utilizes advanced extruded aluminum structural components to create integrated floor-to-sidewall and sidewall-to-roof joints. This design effectively distributes the weight of the walls and roof, making a stronger and more durable body than competitor designs that rely on screws to carry the weight.

**B** The foundation substructure assembly is precision-aligned to maximize strength and cross-coach support as well as durability.

**C** Laminated risers feature a welded aluminum core for superior strength and provide a stable base for the floor structure and storage compartments.

**D** Critical steel components are treated using an advanced electrodeposition coating process that provides superior corrosion protection.



One-year-old competitor's rubber roof



One-year-old Winnebago Industries fiberglass roof

**BUILT TO A HIGHER STANDARD.**

The Minnie Winnie features a crowned, one-piece fiberglass roof skin backed with a 10-year limited parts-and-labor roof skin warranty. Fiberglass offers superior strength, attractiveness and durability compared to rubber roofs found on many competitive models. Over time, rubber roofs are susceptible to chalking, streaking and degradation, and have less puncture and tear resistance than fiberglass.



©2004 Winnebago Industries, Inc., Forest City, IA 50436. Printed in USA.

Seat belts are your most important hookup. Always buckle up.

NYSE listing: WGO

Visit us at [www.winnebagoind.com](http://www.winnebagoind.com)





30V - Island Moss with Washed Maple

### CLASS A AMENITIES. CLASS C CONVENIENCE.

Striking the perfect balance between luxury and practicality, the 2005 Minnie Winnie is filled with features normally seen only in a Class A motor home. Minnie Winnie features Smart Space™—Winnebago Industries' innovative design philosophy that makes the most of interior living areas by maximizing functionality and focusing on user-friendly features. The plush Stitchcraft custom furniture features residential comfort and styling. Day/night pleated shades and custom interior lighting give you the privacy you desire. Thermostat-controlled, floor-ducted heating and ceiling-ducted air conditioning allow you to easily control your environment for maximum comfort.



## EVERYTHING YOU'RE LOOKING FOR.

Every aspect of the Minnie Winnie's interior is designed with your comfort in mind. The flush-mounted, dual-glazed, thermo-insulated windows are available to add thermal efficiency in all weather. Choose the optional heat pump to keep warm on cool mornings without needing to turn on the furnace.

Your living area becomes even more spacious with the help of the hydraulically powered front slideroom. The roomy interior cabinets are conveniently positioned and, for added beauty and durability, feature a catalyzed finish usually reserved for premium residential applications.

Step into the galley and you'll find it filled with high-quality appliances, including a standard convection microwave, a large double-door refrigerator/freezer with available icemaker and a three-burner Amana® range/oven with vented range hood. Solid-surface countertops, a sink cover and a flip-up countertop provide you with additional work space. Everything has its place, thanks to ample storage space provided by the pantry (not available on the 31C) and beautiful cabinetry. Enjoy purified water from the available water filtration system with separate faucet.

Venture back to the bedroom area and you'll find an abundance of storage in the large drawers and in the desk/vanity, and closet space in the wardrobe. For even more space, choose the 27P or 30V floorplan with a bedroom slideout area.

The bedroom features a queen-size Sleep Number® Bed by Select Comfort®. Using the hand-held remotes on each side of the bed, you can quickly and independently adjust the firmness level of the mattress to your ideal level of comfort and support.



## TAKE YOUR ENTERTAINMENT WITH YOU.

Entertainment is available anywhere the road takes you, thanks to the standard front entertainment center featuring a 24" flat-screen TV with a Video Selection System. The available Deluxe Sound System, featuring 5-Channel QSurrround™, provides added enjoyment of all your favorite movies and music. Further upgrade your entertainment system with the available DVD/VCR combo or the available 300-watt inverter, which provides 110-volt AC power to the TV when shoreline or generator power is not available.

Our engineers really outdid themselves when they created the BenchMark™ full comfort dinette. The BenchMark features innerspring cushioned seats—giving you the look and feel of residential furniture. The seats flip up, allowing access to a large storage space. It also quickly converts from a dinette to a comfortable bed. The 2005 Minnie Winnie features increased seat belt locations, providing you with greater seating flexibility while traveling. There's even an anchor for a child's safety seat.

For added sleeping capacity, you can choose the available front bunk option with 20" TV/DVD combo. It gives you the entertainment options you're looking for and gives the little ones a place of their own.

A



B



C



D



E



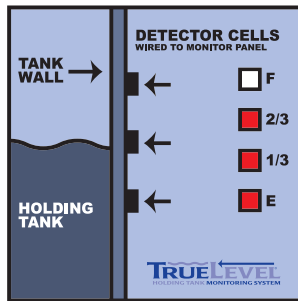
F



G



H



I



## THE DIFFERENCE IS IN THE DETAILS.

A) The well-designed cockpit has controls positioned for maximum driver convenience and can be enhanced with the available Carbon Fiber Black dash appliqué (shown). All switches and controls are easy to reach—including standard power windows and a remote control for driver, passenger and entrance door locks. An auxiliary start switch lets you start the engine in the event the chassis battery loses its charge. Driver and passenger-side airbags are standard.

B) The compact, exclusive Trimline™ console is another innovative Smart Space design developed by Winnebago engineers. It provides cupholders, a glove compartment and a storage compartment in front. The new sleek design provides easier access between the cab and the living area.

C) For added convenience when backing up, select the available rearview monitor system. It includes a 6" screen mounted between the visors on an adjustable swivel base. The system also includes one-way audio.

D) Always keep in touch with the four available two-way radios. They have up to a five-mile range and recharge at their built-in charging station.

E) The RV Radio® features large control knobs and easy-to-operate buttons. And you can run it from the house batteries by flipping the radio power switch. For added convenience, there are two remotes—one is hand-held and one is attached to the steering wheel.

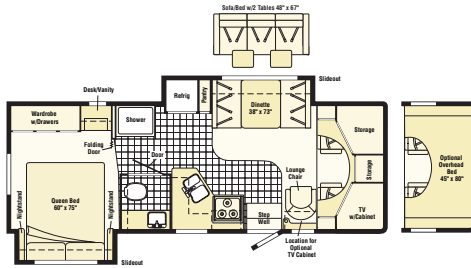
F) Take your entertainment outdoors with the available exterior entertainment center. It features an AM/FM stereo, CD player with remote, 12-volt DC receptacle, TV jack, 110-volt outlet, speakers and removable table. A portable satellite dish hookup is conveniently located in the electrical service compartment (portable satellite dish not included).

G) The Winnebago Industries' exclusive StoreMore® slideout system, featured on the 27P and 31C, allows you to easily access your belongings. That's because the exterior storage compartments extend along with the slideout. The large storage area easily accommodates oversized and odd-shaped items.

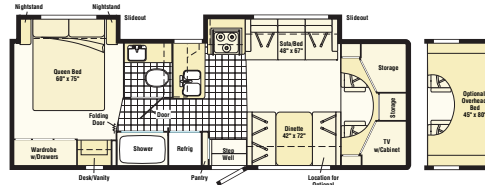
H) Winnebago Industries' exclusive TrueLevel™ holding tank monitoring system incorporates Mirus™ detector cells to ensure accurate fresh and wastewater tank level readings. Mirus detector cells produce a microelectric field that detects liquid levels from outside the tank. No more probes to corrode or clog. Just true, accurate readings time after time.

I) The exterior service center is located for easy access. The QuickPort™ service connection hatch allows you to close your compartment doors when connected to hookups at the campground. The hatch is large enough to accommodate hoses and power cords so you don't have to struggle putting cords through small holes, making hookups a snap.

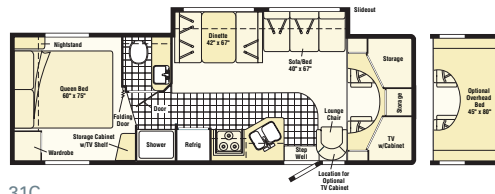
## FLOORPLANS AND EXTERIORS



27P



30V



31C



Vinyl Floorcovering



Seat Belts

Note: Dimensions shown are for sleeping space only and may vary due to styling differences. Dashed lines denote overhead storage areas.

Cirrus Blue Metallic  
(Standard wheel covers shown.)



Granite Metallic  
(Available stylized aluminum wheels shown.)



## INTERIORS



Island Moss



Loganbrook



Truffle



Concert Cherry



Portsmouth Oak



Washed Maple

### LOOKS GREAT INSIDE AND OUT.

We believe the same high standards we apply to construction should apply to interior design. That's why we design efficient floorplans based on customer input, why we look for durable fabrics in pleasing colors, and why we handcraft our own cabinets using traditional panel and rail construction.

To keep your Minnie Winnie looking great for years to come, we use one-piece, fiberglass sidewall construction for added durability and strength. Available stylized aluminum wheels resist corrosion, while the available flush-mounted, dual-glazed, thermo-insulated windows provide added thermal efficiency in all weather. Bring along some towable fun with the help of the standard 5,000-pound capacity, 350-pound vertical tongue weight hitch.<sup>9</sup>

# 2005 WINNEBAGO MINNIE WINNIE® SPECIFICATIONS

	27P	30V	31C
<b>Length</b>	27'11"	30'2"	31'4"
<b>Exterior Height w/A/C<sup>a</sup></b>	11'7"	11'6"	11'5"
<b>Exterior Width<sup>b</sup></b>	8'5.5"	8'5.5"	8'5.5"
<b>Exterior Storage<sup>c</sup> (cu. ft.)</b>	50.1	65.5	73.6
<b>Interior Height</b>	6'8"	6'8"	6'8"
<b>Interior Width</b>	8'	8'	8'
<b>Fresh Water Capacity w/Heater<sup>e</sup> (gal.)</b>	34	39	40
<b>Holding Tank Capacity – Black/Gray<sup>e</sup> (gal.)</b>	28 / 42	29 / 35	35 / 36
<b>LP Capacity<sup>f</sup> (gal.)</b>	18	18	18
<b>Fuel Capacity (gal.)</b>	55	55	55
<b>GCWR<sup>g</sup> (lbs.)</b>	20,000	20,000	20,000
<b>GVWR (lbs.)</b>	14,050	14,050	14,050
<b>GAWR – Front (lbs.)</b>	4,600	4,600	4,600
<b>GAWR – Rear (lbs.)</b>	9,450	9,450	9,450
<b>Wheelbase</b>	190"	205"	216"

Standard - S Optional - O

27P 30V 31C

## AUTOMOTIVE/CHASSIS

	27P	30V	31C
<b>Chassis</b> – Ford® E450 Super-Duty, 6.8L V10 SOHC Triton® engine, 306-hp, automatic 4-speed overdrive transmission, 4-wheel ABS, 130-amp. alternator, dual airbags	S	S	S
<b>Tire spare</b> , <b>Tire Tool</b> wrench, <b>Trailer Hitch<sup>g</sup></b> 5,000-lb. drawbar/350-lb. maximum vertical tongue weight & wiring, <b>Wheel Liners</b> stainless steel (4)	S	S	S
<b>Air Springs</b> auxiliary rear	O	O	O
<b>Wheels</b> stylized aluminum, hubcover kits	O	O	O

## CAB AREA & DRIVER CONVENIENCES

	27P	30V	31C
<b>Trimline Beverage Holder</b> , <b>Cab Seats</b> (fabric) w/3-point adjustable seat belts, armrest, fixed lumbar support, multi-adjustable slide/recline, <b>Cigarette Lighter/12-Volt DC Powerpoint</b> , <b>Cruise Control</b> , <b>Curtain</b> cab divider, <b>Domelights</b> , <b>Floor Mats</b> (rubber) driver & passenger, <b>Hood Release</b> , <b>Power Door Locks</b> w/remote control, driver/passenger/main entry, <b>Power Cab Windows</b> , <b>Steering Wheel</b> tilt w/power assist, <b>Sunvisors (2)</b> , <b>Trim Panels</b> driver & passenger doors (chassis supplied) w/map pocket	S	S	S
<b>Cab Seats</b> leather insert w/vinyl surround	O	O	O
<b>Instrument Panel/Beverage Holder</b> Carbon Fiber Black appliqué	O	O	O
<b>Monitor System</b> rearview w/single camera & 1-way audio, Audiovox®	O	O	O

## ENTERTAINMENT

	27P	30V	31C
<b>AV-RADIO (Cab)</b> AM/FM stereo cassette/CD player w/weather band & remote control, speakers (4), <b>Radio Power Switch</b> main/auxiliary, <b>Remote Control</b> steering wheel, <b>Satellite System Ready</b> , <b>Telephone</b> input & interior jack, <b>TV 24" Flat-Screen Color AC Stereo</b> w/remote, Video Selection System, RCA® <b>TV Enhancement Package</b> antenna (amplified), 12-volt DC powerpoint(s), interior jack(s), coax wiring, cable input	S	S	S

27P 30V 31C

	27P	30V	31C
<b>DVD/VCR</b> combo, stereo w/remote, RCA	O	O	O
<b>Entertainment Center (Exterior)</b> AM/FM radio w/CD player & remote, DC receptacle, AC duplex receptacle, TV jack, radio antenna, speakers (2), lockable compartment, removable TV table	O	O	O
<b>Radios (4)</b> 2-way w/docking port & charger	O	O	O
<b>Satellite Dish Antenna</b> RV digital, elevation sensing unit	O	O	O
<b>Sound System</b> deluxe, w/5-Channel QSURROUND sound, amplifier, speaker system	O	O	O
<b>TV/DVD Combo</b> 20" flat-screen, AC color w/remote, RCA, cabinet, w/front bunk option	O	O	O

## INTERIOR

	27P	30V	31C
<b>Ceiling</b> fabric, <b>Clock</b> , <b>Cupholder(s)<sup>d</sup></b> , <b>Lights</b> ceiling, incandescent w/wall switches, <b>Lights</b> halogen (over front TV cabinet), <b>Lights</b> reading, <b>12-Volt DC Powerpoint</b> , <b>Shades</b> day/night pleated (lounge, dinette, bedroom), mini blinds (galley)	S	S	S
<b>Light</b> swivel, above lounge chair			S
<b>Mirror</b> wall		S	S
<b>Picture</b>		S	S
<b>Bunk</b> front overhead w/mattress, ladder, side windows w/curtains, pleated privacy curtain, storage space, 20" TV/DVD combo w/cabinet (lounge chair window deleted with this option on 27P and 31C)	O	O	O
<b>Windows</b> dual-glazed/thermo-insulated, flush-mounted	O	O	O

## CABINETY

	27P	30V	31C
<b>Portsmouth Oak</b> stile-and-rail construction, raised-panel inserts on upper doors	S	S	S
<b>Concert Cherry</b> stile-and-rail construction, raised-panel inserts on upper doors	O	O	O
<b>Washed Maple</b> stile-and-rail construction, raised-panel inserts on upper doors	O	O	O

# 2005 WINNEBAGO MINNIE WINNIE® SPECIFICATIONS

Standard - S Optional - O 27P 30V 31C

## COUNTERTOPS

<b>Laminate</b> dinette, bath, bedroom, <b>Solid-Surface</b> galley	S	S	S
---	---	---	---

## FLOORCOVERING

<b>Carpeting</b> w/pad, <b>Vinyl</b> bath, galley & stepwell area	S	S	S
---	---	---	---

## FURNITURE

<b>BenchMark® Dinette</b> w/access to storage below	S	S	S
---	---	---	---

<b>Chair</b> lounge, hoop-base (swivel/gliders) (must be secure when traveling)	S		S
---	---	--	---

<b>Sofa</b> w/throw pillow		S	S
----------------------------	--	---	---

<b>Sofa</b> w/2 tables & throw pillow, adjustable reading lights	O		
--	---	--	--

## GALLEY

<b>Countertop</b> flip-up extension, <b>Faucet</b> Moen®, single-control, <b>Microwave/Convection Oven</b> touch control, Samsung®, <b>Range</b> sealed 3-burner w/oven, Amana® <b>Range Hood</b> vented w/light and fan, <b>Refrigerator/Freezer</b> large double-door, Norcold®, <b>Sink</b> double-bowl, molded w/sink covers, <b>Wall Border</b>	S	S	S
--	---	---	---

<b>Pantry</b>	S	S	
---------------	---	---	--

<b>Refrigerator/Freezer</b> large double-door w/icemaker, Norcold	O	O	O
---	---	---	---

<b>Wastepaper Basket</b>		S	S
--------------------------	--	---	---

<b>Water Purification</b> w/separate faucet	O	O	O
---	---	---	---

## BATH

<b>Cabinet</b> lavatory, <b>Cabinet</b> medicine, <b>Faucet</b> (lavatory) dual-control, <b>Faucet</b> (shower) dual-control w/flexible showerhead, <b>Light</b> shower, <b>Makeup Lights (3)</b> , <b>Magazine Rack</b> , <b>Mirror</b> w/frame, <b>Shower</b> w/removable clothes rod, <b>Shower Door</b> textured glass, <b>Shower Skylight</b> , <b>Sink</b> rectangular, <b>Tissue Holder</b> , <b>Toilet</b> w/foot-pedal flush, <b>Towel Bar</b> , <b>Towel Rack</b> 3-rod, mounted to door	S	S	S
--	---	---	---

<b>Towel Ring</b>	S	S	
-------------------	---	---	--

## BEDROOM

<b>Bed</b> queen, Sleep Number, w/underbed storage, bedspread, pillow shams, throw pillow, <b>Lights</b> decorative wall lamp(s), <b>Lights</b> reading, <b>Nightstand(s)</b> , <b>Wall Border</b> , <b>Wardrobe</b> w/drawers & mirrored door(s) (door-activated light on 27P & 30V)	S	S	S
---	---	---	---

<b>Headboard</b>			S
------------------	--	--	---

<b>Shirt Closet</b> w/2 drawers			S
---------------------------------	--	--	---

<b>Vanity Cabinet</b> w/flip-up countertop, mirror, stool, <b>12-Volt DC Powerpoint</b>	S	S	
---	---	---	--

## EXTERIOR

<b>Awning Rails</b> w/rain gutters, <b>Door</b> entrance w/separate screen door, deadbolt lock, remote keyless entry, <b>Entrance Door Steps</b> double, electric w/doorjamb switch, <b>Graphics Package</b> Cirrus Blue Metallic or Granite Metallic, <b>Ladder</b> , <b>Light</b> porch w/interior switch, <b>Mirrors</b> plate-mounted, electric/remote w/defrost, <b>Mudflaps</b> rear, <b>Receptacle</b> AC duplex, <b>Running Boards</b> painted fiberglass w/front wheel lips, <b>Sidewall Skin</b> one-piece smooth fiberglass, <b>Storage Compartments</b> valance panels, trunk liner, <sup>d</sup> gas cylinders, TriMark® KeyOne™ System, paddle latch, lights	S	S	S
--	---	---	---

<b>Awning patio</b>	O	O	O
---------------------	---	---	---

a The height of each model is measured to the top of the tallest standard feature and is based on the curb weight of a typically equipped unit. The actual height of your vehicle may vary by several inches depending on chassis or equipment variations. Please check with your dealer for further information.  
 b Minnie Winnie floorplans feature a wide-body design—over 96". In making your purchase decision, you should be aware that some states restrict access on some or all state roads to 96" in body width. Before making your purchase decision, you should confirm the road usage laws in the states of interest to you.  
 c The load capacity of your motor home is designated by weight, not by volume, so you cannot necessarily use all available space when loading your motor home.  
 d Not all items available in combination. See dealer for details.  
 e Capacities are based on measurements prior to tank installation. Slight capacity variations can result due to installation applications.

27P 30V 31C

## SYSTEMS

<b>Air Conditioner (Roof)</b> 14,800 BTU, ceiling-ducted w/wall thermostat, <b>Auxiliary Start Circuit</b> , <b>Batteries (Coach) (2)</b> deep-cycle, group 24, <b>Battery (Coach)</b> disconnect system, <b>Battery Charge Control</b> automatic dual, <b>Drain</b> water tank, <b>Electrical Distribution System</b> AC & DC breaker panels, 45-amp. converter/charger, <b>Furnace</b> 30,000 BTU, low profile, <b>Generator/Shoreline Automatic Changeover Switch</b> , <b>Generator Prep Kit</b> , <b>Monitor Panel</b> battery condition gauge, generator hourmeter gauge, <sup>d</sup> generator start/stop switch, <sup>d</sup> holding tank levels, <b>TRULEVEL</b> holding tank monitoring system, LP tank level, water heater light(s), water heater switch, water pump switch, water tank level, <b>Holding Tank Flushing System</b> black tank only, <b>Power Cord</b> 30-amp. 25', <b>Roof Vent</b> <sup>d</sup> nonpowered, lounge, bedroom, <b>Roof Vent</b> powered, bath, <b>Service Center (Electrical)</b> cable input, portable satellite dish hookup,  <b>QuickPort</b> service connection hatch, power cord, telephone input, <b>Tank</b> holding, heated compartment, <b>Tank LP</b> , permanent mount w/gauge, <b>Water Heater</b> 6-gallon, electronic ignition, LP gas, <b>Water System Winterization Package</b> water heater bypass valve & siphon tube, <b>Water Hookup</b> city, <b>Water Pump</b> demand, <b>Water Tank Fill</b> gravity, w/locking door	S	S	S
--	---	---	---

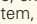
<b>Generator</b> <sup>d</sup> 4,000-watt, Onan® MicroQuiet™ gas	O	O	O
---	---	---	---

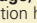
<b>Home Comfort Plus Package</b> <sup>d</sup> roof A/C heat pump, auxiliary automotive heater, nonpowered insulated roof vent (bedroom), powered insulated ventilator fans (lounge, bath)	O	O	O
---	---	---	---

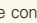
<b>Inverter</b> DC/AC, 300-watt	O	O	O
---------------------------------	---	---	---

<b>Roof Vent</b> powered ventilator fan, <sup>d</sup> lounge, <b>Solar Panel</b> <sup>d</sup> 10-watt w/battery charger	O	O	O
---	---	---	---

<b>Water Heater</b> 6-gallon, electronic ignition, 110 vac/LP gas w/motoraid, includes energy management system	O	O	O
---	---	---	---

<b>Service Compartment (Drainage/Water)</b> air chucks, <sup>d</sup> pressurized city water hookup/tank diverter fill, drainage valves, exterior wash station w/pump switch, 10' sewer hose, holding tank flushing system,  <b>QuickPort</b> service connection hatch	S		S
--	---	--	---

<b>Service Compartment (Drainage)</b> drainage valves, 10' sewer hose,  <b>QuickPort</b> service connection hatch			S
--	--	--	---

<b>Service Compartment (Water)</b> pressurized city water hookup/tank diverter fill, drainage valves, exterior wash station w/pump switch, holding tank flushing system,  <b>QuickPort</b> service connection hatch			S
--	--	--	---

## SLIDEOUT

<b>STORE MORE</b> <b>Slideout Room</b> dinette/pantry/refrigerator w/slidoor cover, <b>Slideout Room</b> bed w/slidoor cover	S		
--	---	--	--

<b>Slideout Room</b> sofa/range w/slidoor cover, <b>Slideout Room</b> bed w/slidoor cover		S	
---	--	---	--

<b>STORE MORE</b> <b>Slideout Room</b> sofa/dinette w/slidoor cover			S
---	--	--	---

## SAFETY

<b>Airbags</b> driver & passenger, <b>Assist Bar</b> interior, <b>Assist Handle</b> exterior, acrylic, <b>Bumpers</b> front & rear, <b>Child Seat Tether</b> dinette, <b>Detectors/Alarms</b> LP leak, smoke, carbon monoxide, <b>Fire Extinguisher</b> 10 B.C., <b>Ground Fault Interrupter</b> , <b>Light</b> center high-mount brake lamp, <b>Light(s)</b> courtesy w/wall switch(es), <b>Seat Belts</b> cab, 3-point, <b>Seat Belts</b> lap (in selected areas), <b>Window</b> escape	S	S	S
---	---	---	---

## WARRANTY<sup>h</sup>

<b>12-month/15,000-mile basic limited warranty; 36-month/36,000-mile warranty on structure; 10-year limited parts &amp; labor warranty on roof skin<sup>i</sup></b>	S	S	S
---	---	---	---

f Capacities shown are tank manufacturer's listed water capacity (W.C.). Actual filled LP capacity is 80% of listing due to overfilling prevention device on tank.  
 g Actual towing capacity is dependent on your particular loading and towing circumstances, which includes the GVWR, GAWR and GCWR, as well as adequate trailer brakes. Please refer to the Operator's Manual of your vehicle for further towing information.  
 h See separate chassis warranty details provided in owner's manual.  
 i See your dealer for complete warranty information.  
 Winnebago Industries' continuing program of product improvement makes specifications, equipment, model availability and prices subject to change without notice. Comparisons to other motor homes are based on the most recent information available.