

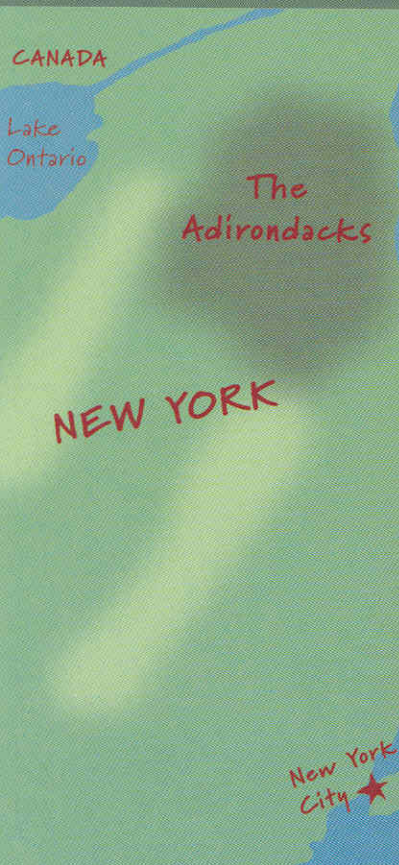


The open road is calling. Make this your answer.



*Tour the
country in the
2004
Ultimate
Advantage.*





Whatever your destination, whether it's the Adirondacks or the open road, there's no better way to experience your travels than with the 2004 Ultimate Advantage. Floorplans with triple slideouts are designed to maximize your living and bedroom space. If storage space is what you're looking for, you'll find it in here. The Ulti-Bay® diesel pusher 34,200 GVWR chassis also offers unsurpassed performance and handling, and an impressively smooth ride, as well as large, accessible basement storage. Towing and hill climbing power is delivered with the 370-hp Cummins® diesel engine.

Improved cockpit ergonomics, a compressed air center and full-body exterior paint are just some examples of Winnebago Industries' renowned craftsmanship. So match a stunning mountain environment with the equally stunning and luxurious 2004 Ultimate Advantage. Once you've been to this mountaintop, other luxury motor homes may not measure up.

If you thought you needed an extra excuse to stay in and enjoy the exquisite surroundings, check out the entertainment choices. The standard 27" Sony® flat-screen television is fully enhanced with crystal clear Dolby® 5-channel QSurround™ Sound by Sony for full theater enjoyment. An available RV In-Motion digital satellite dish or available RV digital satellite dish can enhance your programming options. You can even watch a show when you're not connected to shoreline or generator power, thanks to the standard 2,000-watt inverter/charger.



The cockpit puts you in total command with an ergonomic design that surrounds you with fingertip convenience. Standard, upscale features include an electronic compass with outdoor thermometer, driver and passenger map lights, stereo with a built-in six-disc CD changer, built-in Sony color rearview monitor and roof-mounted air horns. For added comfort, the SmartWheel™ steering wheel is wrapped in soft leather and tilts and telescopes for perfect positioning. It also incorporates the windshield wiper, cruise, courtesy blink lights and headlight dimmer controls for easy access. Bus-style power sunvisors are standard and the front privacy curtain features pull cords for easy opening and closing.

Upgrade your listening choices with Sirius™ Satellite Radio programming. It offers 100 channels of digital entertainment, with 60 commercial-free, original music channels. High-altitude satellites deliver crystal clear satellite programming anywhere in the United States with no signal fades. And the receiver has full scrolling capabilities that show artist names and song titles. (Sirius Satellite Radio programming requires a subscription.)

SIRIUS 



Enjoy the inner beauty of a distinguished luxury coach. You'll find only the finest interior furnishings, including premium Villa furniture (with available leather upgrades). We took special care to place the overhead lights for optimal illumination.





Creating a sumptuous feast or a quick snack is easy with the well-equipped galley. Upscale features include a 30" microwave/convection oven, Corian® solid-surface countertops, an available G.E. Advantium™ Speedcook microwave oven and even a built-in dishwasher. The molded, Swanstone™ solid-surface sink is stain-resistant for easy cleanup. It features a single-control Moen® faucet with pullout sprayer and a separate Everpure® faucet for purified drinking water. Beautiful Portsmouth Oak, Concert Cherry, Honey Cherry or Washed Maple cabinetry features dovetail construction and a beautiful catalyzed finish typically reserved for exclusive home cabinetry.

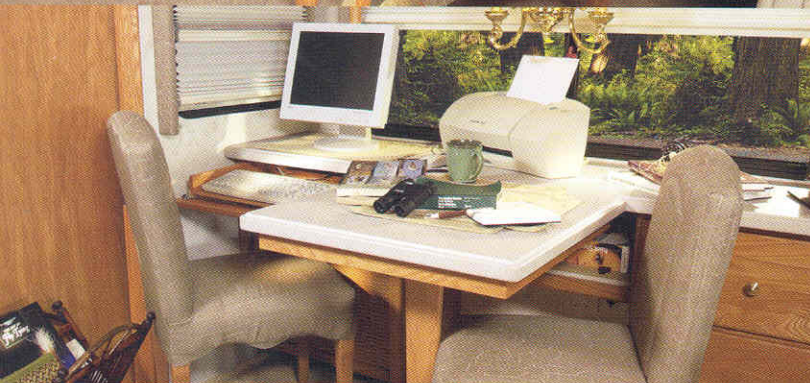


Customize your galley with two refrigerator choices. A large, double-door refrigerator/freezer comes standard. This choice includes a slideout side pantry for additional dry goods storage. Or you can choose a four-door refrigerator/freezer (shown here) if you prefer to keep more cold and frozen foods on hand. Both models include an icemaker.

The Rest Easy® Multi-Position Lounge offers unsurpassed seating flexibility and comfort. It starts as a plush sofa. Touch the button and it becomes a relaxing recliner with pullout ottoman. Touch the button again and it's a 60" x 75" bed. Rest Easy comes standard with fabric and is also available in leather.



This available, multi-function dining table seats two comfortably, expands to accommodate four and doubles as a convenient computer desk or hobby area.



A walk-through design creates a spacious bathroom area. Added conveniences include a residential-height porcelain toilet, ceramic tile floorcovering, a solid-surface sink, an adjustable Moen brass showerhead and a fold-down shower seat (not available on the 40K).

The standard, rear slideouts open wide to create a magnificent bedroom with a residential-size, walk-around, queen-size bed. Stretch out and relax while watching the 19" color TV or drift off to sleep listening to the rear stereo system. For your storage convenience, a spacious, cedar-lined wardrobe is provided, along with underbed storage.



Full-Body Paint

*Fieldstone
suggested with Opulance or Sandalwood interior*



*Graphite
suggested with Georgian Rosewood or Sandalwood interior*



*Sapphire
suggested with Blue Calais interior*



Concert Cherry



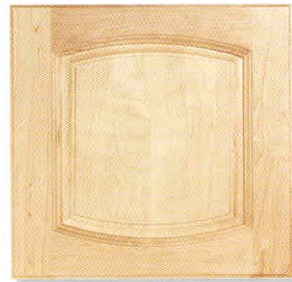
Honey Cherry



Portsmouth Oak



Washed Maple



Blue Calais



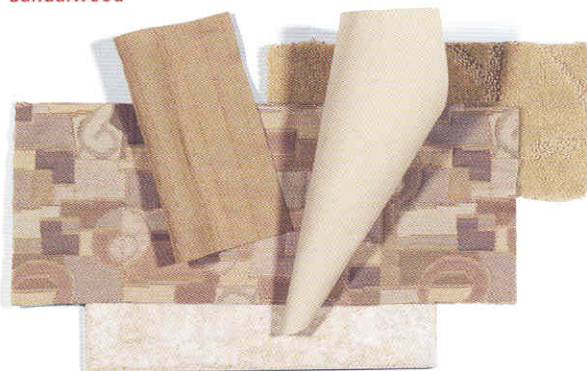
Georgian Rosewood



Opulence



Sandalwood



The available Euro Recliner comes with an ottoman so you can curl up with a good book or stretch out and watch a movie.



The available TripTek™ computer displays trip information on the rearview monitor, including distance to scheduled destination, time to destination, distance traveled, time traveled, fuel economy and a handy pre-trip checklist.

Take comfort in always knowing where you are and where you're going. An Alpine® GPS navigational system pinpoints your precise location and is available on every model.

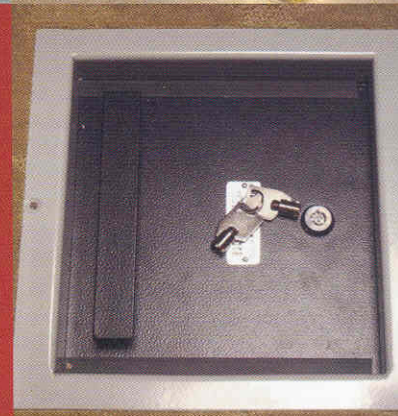
The available dash-mounted dual-climate controls allow the driver and passenger to regulate their own comfort settings (passenger controls shown).

A keyless remote locks and unlocks the entry and compartment doors. The KeyOne™ System also allows these doors to be opened with a single, double-bitted key. When using the remote, the passenger map light stays on for 20 seconds.

The available, built-in central vacuum cleaner from Dirt Devil® features a powered brush head, a full complement of accessories and a 30-ft. detachable hose that easily reaches the entire coach. There's also a VacPan® located at the base of the galley cabinets that whisks away sweepings without using any attachments. For exterior compartments, a second vacuum connection is located in the Ulti-Bay storage area.



The available, keyed security vault has its own concealed location. It provides a safe place to keep important documents and valuables.



The standard dining table provides a spacious dining area for two and quickly expands to accommodate four place settings when entertaining guests.

Laundry your clothes at your convenience with the available, built-in combination washer/dryer. It includes nine wash, and three time-and-temperature programmable dry cycles to accommodate a wide variety of fabrics and garments.



The bedroom features a queen-size Sleep Number® Bed by Select Comfort™. Using the hand-held remotes on each side of the bed, you can quickly and independently adjust the mattress firmness level to your ideal level of comfort and support...your Sleep Number, which is Your Key to a Perfect Night's Sleep™!

Both Kustom Fit leather cab seats feature electric, adjustable lumbar support and six-way power-assist seat pedestals for maximum comfort. Heated driver and passenger cab seats are available. The passenger area includes a convenient slider window and a powered stepwell cover, which provides flooring in front of the passenger seat for comfort while traveling. A powered footrest for the passenger seat is available.



The sewer hose features a QuickConnect™ Coupling Valve for quick, clean hookups and holster for easy storage.



The Ulti-Bay storage bays are spacious and include a pass-through section to accommodate oversized items, while the slideout trays make access even easier. The storage bay doors feature gas struts and single-paddle latches with enlarged finger clearance for easy, one handed operation.



Say good-bye to wrestling cords and hoses through small holes; the new QuickPort™ Service Connection Hatch makes hookup a snap. Plumbing connections and service functions are well-positioned and clearly labeled for ease of operation. Tank and system levels can also be checked at the convenient exterior monitor panel. Powered reels are available for your water supply hose and shoreline power cord.



StoreMore® is storage the way it is supposed to be. With the StoreMore slideout system, the driver-side front exterior storage bays actually move with the slideroom for easy access, even with the slideout extended.



Keep your electrical system running smoothly even when operating your central air conditioning on 30-amp. shore power. The PowerLine® Energy Management System monitors onboard 110-volt electrical usage and minimizes the nuisance of tripped campground circuits by regulating the operation of post-ponable electrical loads during periods of heavy usage. As demand decreases, PowerLine automatically returns power to the secondary appliances and systems.

TRUEAIR®
RESIDENTIAL CENTRAL AC

Precision climate control is assured, thanks to Winnebago Industries' exclusive TrueAir® Residential Central Air Conditioning. TrueAir utilizes superior cooling technology to supply optimum environmental control throughout the coach. At the heart of the system is a Coleman®-Mach® cooling unit located in the basement to provide a lower vehicle profile while reducing noise and eliminating condensation runoff. You'll also find this location is much easier to service and provides a lower center of gravity than traditional, roof-mounted air conditioning units. A heat pump comes standard so TrueAir can help keep your Ultimate Advantage warm on cool days without running the furnace.



The OnePlace™ Systems Center places important and frequently used switches, gauges, level indicators and controls in one convenient location.



For your outdoor enjoyment, we've included an exterior entertainment center. The AM/FM stereo with CD player is perfect for relaxing under the shade of the awning. It comes with a remote control and TV hookups.



Use the automatic leveling jacks for fast, convenient setup when you've stopped for the day. HWH® leveling jacks provide more than 20 tons of hydraulic power for rock-solid stabilization.

Mirrors

Top-mounted electronic remote control mirrors feature both flat and convex surfaces that are strategically positioned to provide increased visibility and safety. Electronic defrost helps keep the oversized mirrors clear.

82.77" Wheel Track

The Ultimate Advantage features an ultra-wide wheel track for better handling and increased stability.

Tires

Michelin® XZA1 tires are mounted on precision-machined, stylized aluminum wheels.

Dual Fuel Fills

Fuel fills are located on both sides of the coach for convenient fueling from any pump.



You'll love relaxing in the shade of the available Carefree® One-Touch™ patio awning. It extends and retracts electronically and is constructed with new anodized aluminum hardware that matches your coach's body color. The powered entrance door awning and new electric rear window awnings provide additional shade and protection. All units feature full-body paint.

Fiberglass Roof

Ultimate Advantage features a one-piece fiberglass roof backed with a 10-year limited parts-and-labor roof skin warranty.

Insulated Roof Vents

Roof vents improve circulation and are insulated for thermal efficiency.

Hitch

A 10,000-lb. drawbar capacity trailer hitch is standard to accommodate towing needs.*

Service Points

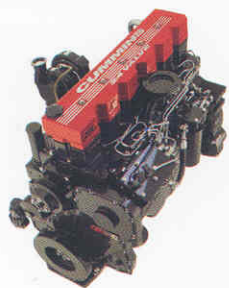
We designed the Ultimate Advantage to provide convenient access to service points such as the air cleaner, fluid fills and diagnostic plugs.

Side-Mounted Radiator

The radiator is mounted on the side of the coach for improved airflow and cooling.

Air-line System

Draining the air-line system of condensation is recommended on all vehicles with air brakes and air suspension. Automatic system dryers and heated air system drains include remote lanyard controls so you'll never have to crawl under the chassis to perform this routine maintenance.



The 370-hp ISL 8.9L Cummins diesel engine is equipped with a wastegated turbo-charger for improved power and efficiency and a Jacobs Engine Compression Brake™, which utilizes engine compression to slow the vehicle and promotes longer brake pad life. A four-point mounting system cradles the engine, isolating the coach from torque-induced vibration and noise. Basic recommended service intervals for oil and filter changes are 15,000 miles or 12 months under normal conditions and reduce routine maintenance costs.

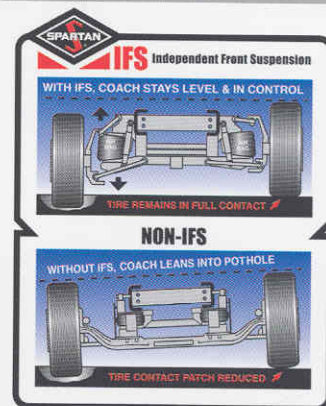
The Allison® 3000 MH six-speed transmission features adaptive electronic technology that actually enables it to adjust the shifting pattern based on your driving style. This results in smoother shifts between gears and, best of all, improved mileage.

A 7,500-watt Onan® Quiet Diesel™ generator provides plenty of AC power and slides out for easy servicing.



A full-width rear mud guard helps deflect dust and small stones from the undercarriage and helps keep the coach and tow vehicle clean.

Some luxury motor coaches still use straight axle technology that is popular in heavy trucks. But the Ultimate Advantage includes an advanced independent front suspension that provides greater lateral stability, eliminates bump steer and allows each wheel to move independently through its range of motion. As a result, each tire maintains better contact with the road for a smooth ride similar to that of a luxury sedan.





Bigger is better. You might assume all luxury-class motor coaches deliver high-performance ride and handling. But the fact is, not all luxury-class motor coaches are created equal. The Ultimate Advantage utilizes the proven performance of a large, high-volume air bag strategically positioned at each wheel-suspension point to deliver responsive handling and a velvety smooth ride. Beware of less-advanced systems that use smaller, lower-volume bags that require multiple air bag mountings at each wheel. Not only are they more cumbersome, the additional air lines and connections increase the opportunity for system leaks.

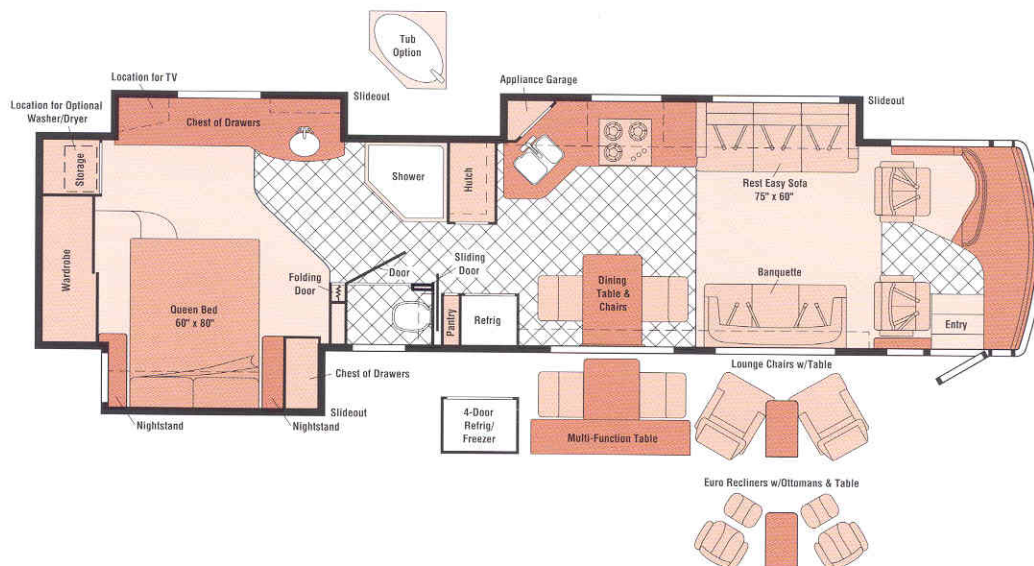
Full anti-lock air brakes deliver impressive stopping power. Both brake and accelerator pedals are adjustable for your driving convenience.



An auxiliary air supply with a detachable 50-ft. hose offers a ready supply of compressed air.



40E



40K



Seat Belts



Ceramic Tile Floorcovering

Note: Dimensions shown are for sleeping space only and may vary due to styling differences. Dashed lines denote overhead storage areas.

Measurements & Weights

	40E	40K
LENGTH	39'11"	39'11"
EXTERIOR HEIGHT ^a	12'0"	12'1"
EXTERIOR WIDTH ^b	8'5.5"	8'5.5"
EXTERIOR STORAGE ^c (cu. ft.)	174	161
INTERIOR HEIGHT	6'8"	6'8"
INTERIOR WIDTH	8'0.5"	8'0.5"
FRESH WATER CAPACITY W/HEATER (gal.)	100	100
HOLDING TANK CAPACITY - BLACK (gal.)	50	50

Automotive/Chassis

	40E	40K
Chassis - Spartan Mountain Master GT/Winnebago Industries® ULTI-BAY Monocoque, Engine Cummins ISL 8.9L turbo-charged/ after cooled diesel, 370-hp @ 1,900 RPM; 1,200 ft. lbs. @ 1,300 RPM, electronic speed control, engine block heater (1,000 W), Jacobs Engine Compression Brake , Allison 6-Speed Electronic 3000 MH World Transmission touch pad gear selector, oil-to-coolant transmission cooler, ratios: 4 = 1.00:1; 5 = .75:1; 6 = .65:1, side-mounted radiator w/hydraulically driven fan, 50-state certification emissions control system, Independent Front Suspension (IFS) Spartan®/Granning® IFS 1460, front suspension, Rear Axle Meritor® RS-19-145 w/Quick-Gear, axle ratio 4.88, Rear Suspension Reyco® RS240AR air suspension, Brakes full air, engine driven compressor, air dryer w/automatic heated moisture ejector, lanyards on air tanks, four-wheel ABS, front 16.5" x 5" drum, rear 16.5" x 7" drum, park: rear axle service brakes, Battery Group 31 commercial, 2,000 CCA, Alternator 160-amp., Fuel Tank 125-gallon, LH & RH fill; fuel/water separator, Tires Michelin XZA1	S	S
Air Accessory Manifold air hose, pressure gauge, quick connect, shutoff, manual, Air Suspension , Leveling Jacks HWH hydraulic, automatic touch pad w/indicator lights, Trailer Hitch ® 10,000-lb. drawbar/500-lb. maximum vertical tongue weight & wiring, Wheels stylized aluminum (4), steel (2)	S	S

Cab Area & Driver Conveniences

	40E	40K
Cigarette Lighter/12-Volt Powerpoint , Compass electronic w/outdoor thermometer, Console Center Cabinet , Defroster Fans (2) auxiliary 2-speed w/instrument panel switch, Floor Mat carpeted, driver, Hood Release w/exterior key locks, Instruments/Gauges speedometer/odometer, tachometer, voltmeter, oil pressure, engine coolant temperature, fuel gauge, headlamp switch, transmission temperature gauge, dual air pressure gauge, turbo-boost gauge, ignition switch, horn, Leather Cab Seats 6-way power assist w/integrated seat belts, multi-adjustable armrests, adjustable electric lumbar support, map pocket, swivel & recline, Map Lights (2) , Color Monitor System rearview w/single camera & 1-way audio, Sony, Power Door Locks keyless entry w/remote, Shades light filtering, cab windows, wraparound w/pull cords, Steering custom 18" multi-plex SmartWheel leather wrapped w/Ultimate® logo & controls for windshield wipers, ICC courtesy blink lights, cruise, tilt, telescope w/power assist, Sunvisors (2) powered, Trim Panel driver side w/drink holder, 12-volt powerpoint, transmission shift pad, cellular phone holder, switches, Trim Panel passenger side w/drink holder, Turbo-boost Gauge , Window (driver & passenger) partial slider w/screen, dual-glazed	S	S
Cab Seat passenger w/powered footrest	0	0
Cab Seats driver and passenger heated	0	0
GPS Navigation System ® Alpine	0	0
Trip Computer TripTek	0	0

Entertainment

	40E	40K
CB Prep antenna, antenna lead, 12-volt power supply, Entertainment Center (Exterior) AM/FM/CD w/remote, 12-volt powerpoint, AC duplex receptacle, TV jack, radio antenna, speakers (2), telephone jack, Radio (Cab) satellite ready, AM/FM stereo CD w/6-disc CD changer, roof-mounted flexible rubber antenna, Radio Power Switch main/auxiliary battery, Sound System Deluxe Sony, 5-channel w/QSurround, VCR/DVD stereo w/remote, amplifier, cube speakers (5), sub-woofer (1), Stereo System (Bedroom) ® AM/FM CD player, Telephone input & interior jacks, TV 19" Color AC w/remote, bedroom, TV 27" Color AC w/remote, Sony flat screen, TV Enhancement Package antenna (amplified), antenna check reminder light, coax wiring, cable input, exterior jack, interior jack(s), Video Selection System	S	S
Satellite Dish ® Winegard®, RV digital, elevation sensing unit, manual	0	0

Measurements & Weights (continued)

	40E	40K
HOLDING TANK CAPACITY - GRAY (gal.)	54	54
LP CAPACITY ® (gal.)	39	39
FUEL CAPACITY (gal.)	125	125
GCWR (lbs.)	44,200	44,200
GVWR (lbs.)	34,200	34,200
GAWR - FRONT (lbs.)	14,200	14,200
GAWR - REAR (lbs.)	20,000	20,000
WHEELBASE	267"	267"

Entertainment (continued)

	40E	40K
Satellite Dish ® Winegard, RV digital, power	0	0
Satellite Dish RV Digital, In-Motion	0	0
Satellite System Sirius antenna, receiver, 1-year pre-paid subscription	0	0

Interior

	40E	40K
Blinds micro galley, micro pleated day/night lounge, dining and bedroom area, Ceiling vinyl, Ceiling Trim Panel with lighting, lounge and galley area, Cupholder(s) , Shade pleated, front wraparound w/pull cords, Light decorative dining w/dimmer switch, Lights fluorescent, recessed w/wall switches, Lights incandescent, Lights halogen, under overheads, Lights reading, Light(s) wall lamp(s), Picture(s) , Shade Package roller design, blackout for all roof vents, Sliding Stepwell Cover Panel powered, Windows dual-glazed/ thermo-insulated	S	S
Central Vacuum Cleaner	0	0

Cabinetry

	40E	40K
Concert Cherry stile-and-rail construction w/pencil edge, double arch raised panels, hidden hinge	0	0
Honey Cherry stile-and-rail construction w/pencil edge, double arch raised panels, hidden hinge	0	0
Portsmouth Oak stile-and-rail construction w/pencil edge, double arch raised panels, hidden hinge	0	0
Washed Maple stile-and-rail construction w/pencil edge, double arch raised panels, hidden hinge	0	0

Countertops

	40E	40K
Solid-Surface Countertops Corian w/beveled edge, galley & bath	S	S

Floorcovering

	40E	40K
Ceramic Tile used throughout galley, cab entrance & bath areas	S	S
Carpeting w/pad		

Furniture/Dining and Lounge Area

	40E	40K
Banquette (Fabric) Villa w/throw pillows & slideout storage drawer	S	
Banquette (Leather) Villa w/throw pillows & slideout storage drawer	0	
Dining Table & Chairs (2) free standing, (2) folding	S	S
Dining/Computer Table & Chairs (2) free standing, (2) folding	0	0
Lounge Chairs (2) (Leather) Euro Recliner w/ottoman	0	
Lounge Chairs (2) (Leather) Villa hoop-base, w/end table	0	
REST EASY® Multi-Position Lounge (Fabric) Villa w/throw pillows & fold-down beverage tray	S	S
REST EASY® Multi-Position Lounge (Leather) Villa w/throw pillows & fold-down beverage tray	0	0
REST EASY® Multi-Position Lounge (Leather) Villa dual control w/heat and massage	0	0
J-Lounge ® (Fabric) Villa w/slideout storage drawer		S
J-Lounge ® (Leather) Villa w/slideout storage drawer		0

Galley	40E	40K
Coffemaker, Faucet single-control w/pull-out sprayer, Moen, Hutch, Light fluorescent, under cabinet, Microwave/Convection Oven w/Range Fan ^f residential 30", G.E.® Mirrors, Pantry slideout, ^f Range Top 3-burner, recessed, sealed burners, Princess, Range Cover w/solid-surface, Refrigerator/Freezer large double-door, w/wood raised-panel inserts, icemaker, Norcold® Roof Vent powered ventilator fan, Silverware Tray, Sink double-bowl molded Swanstone w/solid-surface sink covers, Wastepaper Basket, Water Purification System separate faucet, Everpure	S	S
Appliance Storage Cabinet	S	
Cutting Board slideout	S	
Dishwasher built-in under countertop	0	0
Island storage		S
Microwave/Speedcook Oven w/Range Fan ^f residential 30", G.E. Advantium	0	0
Refrigerator/Freezer 4-door w/wood raised-panel inserts, icemaker, Norcold	0	0

Bath	40E	40K
Cabinet linen w/adjustable shelves, Faucet (lavatory) single-control Moen Posi-Temp® Faucet (shower) single-control w/flexible showerhead, Light shower, Lights makeup, Roof Vent(s) powered ventilator fan w/rain sensor, Shower, Shower Door glass, Showerhead hand-held, Skylight, Sink(s) oval, solid-surface, Tissue Holder, Toilet (Porcelain) w/hand lever, Towel Bar	S	S
Cabinet(s) lavatory		S
Cabinet(s) medicine		S
Magazine Rack	S	
Mirror	S	
Shower/Garden Tub ^f	0	
Shower Seat ^f fold-down	S	
Towel Ring(s)		S

Bedroom	40E	40K
Bed queen-size mattress, Sleep Number by Select Comfort, w/underbed storage, Bedsprad w/pillow shams, Throw Pillows, Sleeping Pillows, Headboard, Lights decorative wall lamps, Light ceiling w/dimmer switch, Lights adjustable reading, Nightstands (2), Shirt Cabinet, Storage Cabinet w/louvered doors, Wainscoting w/chair rail, Wardrobe Cabinet carpeted floor, cedar-lined, clothes rod, light, shelf, shoe shelf	S	S
Cabinet lavatory with sink, drawers and doors	S	0
Dresser with six drawers and mirror		S
Lounge Chair fabric, Flexsteel® ottoman w/inside storage		0
Lounge Chair leather, Euro Recliner w/ottoman		0
Mirror w/beveled edge	S	
Roof Vent(s) powered ventilator fan w/rain sensor	S	S

Exterior	40E	40K
Air Horns roof-mounted, Assist Handle acrylic, lighted w/Ultimate logo & doorbell button, Awnings electric patio w/wind sensor and remote, entrance door, Awning Rail, Door entrance w/separate screen door, deadbolt lock, keyless entry w/remote, dual-glazed window, Door fuel-fill, locking LH & RH sides, Entrance Door Step single, electric w/doorjamb switch, Exterior Full-Body Paint Sapphire, Fieldstone or Graphite, Ladder, Lights docking lamps, Lights fog lamps, Light porch light w/interior switch, Light service, driver side, Light under hood, Mirrors top-mount, wide angle, electric remote w/defrost, Mudflaps (2) rear, Mud Guard full-width (stainless steel w/lettering), Receptacle AC duplex, Sidewall Skin 1-piece smooth fiberglass, high-gloss, Squeegee, Storage Compartments smooth valance panels, trunk liner, gas struts, TriMark® KeyOne System w/power locks & remote, lights, Undercoating	S	S
Awnings ^f window	0	0
Compartment Tray slideout	0	0
Refrigerator/Freezer portable, Norcold	0	0
Spotlight roof mounted w/wireless remote	0	0

Systems	40E	40K
Automotive Heater/Air Conditioner blend air system, Auxiliary Start Circuit, Batteries (Coach) (3) deep cycle, Battery Disconnect System (Coach), Battery Charge Control automatic dual, Battery Charging System (Chassis), Drain 1 1/2" water tank, Electrical Distribution System AC & DC breaker panels, Furnace (2) 35,000 BTU, low profile, Generator ^f 7,500-watt, Onan Quiet Diesel, Generator/Shoreline Automatic Changeover Switch, Inverter/Charger converter, 2,000-watt w/remote panel, ONEPLACE® Systems Center wall-mount, battery digital voltmeter, battery condition gauge, POWERLINE™ energy management display, generator hourmeter gauge, generator start/stop switch, heating/A/C thermostat, holding tank levels, LP tank level, solar panel/battery charger light, water heater switch, water heater on light & pilot indicator light, water pump switch, water tank level, Power Cord 50-amp, Superflex cord, POWERLINE™ Energy Management System, Service (Drainage/Water) drainage valves, holding tank flushing system, sewer hose with Quick CONNECT Coupling Valve, QuickPort Service Connection Hatch, monitor panel, city water hookup/tank diverter fill, drain for fresh water system, exterior wash station w/pump switch, paper towel holder, soap dispenser, Service Center (Electrical) cable TV input, power cord, telephone input, Solar Panel 10-watt battery charger, Tank Flushing System black tank only, Tank holding, heated compartment, Tank LP , permanent mount w/gauge, TRUEAIR® Residential Central Air Conditioning System heat pump, Water Heater 10-gallon electronic ignition, LP gas/120 vac w/Motoraid® Water Heater Winterization Bypass Valve manual, Water Pump demand variable speed tank, Water System Winterization Package water heater bypass valve & siphon tube, Water Tank Fill gravity, Water Tank Fill pressurized city hookup w/diverter valve	S	S
Dual Climate Control automotive heater A/C	0	0
Power Cord Reel 12-volt	0	0
Washer/Dryer Combination ^f	0	0
Water Supply Hose Reel 12-volt	0	0

Slideout	40E	40K
Slideout Room bed w/slidoor cover	S	S
Slideout Room rear chest of drawers/vanity w/slidoor cover	S	
STOREMORE® Slideout Room galley/sofa w/slidoor cover	S	
STOREMORE® Slideout Room J-lounge/galley w/slidoor cover		S
STOREMORE® Slideout Room dining/sofa w/slidoor cover		S

Safety	40E	40K
Assist Bar(s) interior, Detectors/Alarms LP leak, smoke, carbon monoxide, Fire Extinguisher 10 B.C., Ground Fault Interrupter, Light center high-mount brake lamp, Lights courtesy w/wall switches, Lights daytime running lamps, Seat Belts cab, 3-point, integrated with seat, Seat Belts lap (in selected areas), Window escape, Windshield laminated safety glass	S	S
Security Vault w/key	0	0

Warranty ^g	40E	40K
12-month/15,000-mile basic warranty ^h	S	S
36-month/36,000-mile warranty on structure ^h		
10-year limited parts & labor warranty on roof skin ^h		

a The height of each model is measured to the top of the tallest standard feature and is based on the curb weight of a typically equipped unit. The actual height of your vehicle may vary by as much as 2' depending on chassis or equipment variations. Your vehicle may be equipped with optional features that increase the overall height. Please check with your dealer for further information.

b Ultimate Advantage floorplans feature a wide-body design — over 96" in making your purchase decision, you should be aware that some states restrict access on some or all state roads to 96" in body width. Before making your purchase decision, you should confirm the road usage laws in the states of interest to you.

c Your motor coach's load capacity is designated by weight, not by volume, so you cannot necessarily use all available space when loading your motor coach.

d Capacities shown are tank manufacturer's listed water capacity (W.C.). Actual filled LP capacity is 80% of listing due to overfilling prevention device on tank.

e Actual towing capacity is dependent on your particular loading and towing circumstances, which includes the GVWR, GAWR and GCWR, as well as adequate trailer brakes. Please refer to your vehicle's operator's manual for further towing information.

f Not all items available in combination. See dealer for details.

g See separate chassis warranty details provided in owner's packet.

h See your dealer for complete warranty information.

S Standard

0 Optional

Winnebago Industries continuing program of product improvement makes specifications, equipment, model availability and prices subject to change without notice. Comparisons to other motor coaches are based on the most recent information available.

ULTI-BAY CHASSIS

Ulti-Bay is Winnebago Industries' exclusive monocoque chassis design that provides abundant mid-coach storage, impressive driving and handling performance, as well as 10,000 pounds of towing capacity.**

Ulti-Bay combines front and rear Spartan Custom Chassis elements with an advanced truss design that eliminates bulky, cumbersome center rails. To provide even more mid-coach storage, large components such as the water heater, furnace and holding tanks are located fore and aft of the mid-section to create large, unobstructed storage bays.



The Ulti-Bay chassis, combined with Winnebago Industries' proven SuperStructure® construction process, helps make the Ultimate Advantage one of the strongest and most durable motor homes on the road. It's all part of making the Ultimate Advantage the Ultimate Motor Home Experience.

Interlocking joint construction utilizes advanced aluminum structural components to create integrated floor-to-sidewall and sidewall-to-roof joints. This design effectively distributes the weight of the walls and roof, making a stronger and more durable body than some competitors' designs, which rely on screws to carry the weight.

Winnebago Industries invented and perfected Thermo-Panel® manufacturing. The result is an advanced composite construction that combines a low-maintenance, durable exterior panel with welded aluminum support substructures embedded in a high-density block foam insulation core to create a very strong, durable and lightweight sidewall.

** Ultimate Advantage features a tow bar rated at 10,000-lbs. capacity as a standard feature. Actual towing capacity can be further limited by other factors such as the weight of the vehicle as loaded and the type of towing to be performed. Check with your Ultimate Advantage dealer for additional towing specifications.



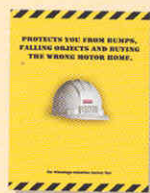
Recognized quality. Recreation Vehicle Dealer Association members annually rate RV manufacturers on the quality of their products and sales and service support. Winnebago Industries has achieved the coveted Quality Circle Award every year since its inception, the only major motor home manufacturer to do so.



Committed to service. We back our motor coaches with the best service after the sale in the industry.

- 12-month/15,000-mile basic limited warranty
- 36-month/36,000-mile warranty on structure
- Standard 10-year limited parts-and-labor roof skin warranty
- Complimentary 24-hour roadside assistance program
- TripSaver Fast Track Parts. TripSaver guarantees that in-stock warranty parts ship directly to your dealer within 24 hours.
- National dealer service network

For sales and service information contact:



All motor homes are not created equal.

Learn more about what sets Winnebago Industries apart. Ask your dealer for this guide. It will help you learn what makes Winnebago Industries motor homes distinctly superior to other brands.



Warning: Joining WIT has been known to cause excessive fun. Winnebago-Itasca Travelers (WIT) is a club for owners of Winnebago Industries motor coaches. WIT is a great way to meet people and offers you:

- Caravans and rallies
- Local and state groups
- RV travel benefits

winnebagoind.com

Seat belts are your most important hookup. Always buckle up.
NYSE listing: WGO

©2003 Winnebago Industries, Inc. Printed in USA.

