

The Class A
that redefines
comfort.





It's in the details.

The spacious interior has been planned and executed to the smallest detail. You'll notice the eye-catching Stitchcraft premium furniture the moment you walk in. The available BenchMark™ Full Comfort Dinette (not available on the 37C and 38R) offers the same plush comfort as residential-style furniture. Day/night pleated shades cover dual-glazed, thermo-insulated windows and offer several levels of light and privacy. Choose from oak or cherry cabinetry that features a catalyzed finish for unsurpassed beauty and durability. The galley's vinyl floor extends to the entrance door for easy clean up of muddy footprints.

Nothing is left to chance when it comes to being user-friendly and comfortable. The standard heat pump takes the chill off cool mornings without running the furnace. Increased living space is made possible by the StoreMore® slideout system. It moves interior cabinets and exterior storage compartments out with the slideroom for easy access. And the ceiling-ducted TrueAir® Residential Central Air Conditioning system delivers quiet, efficient cooling.

33V-Estate Green with Concert Cherry

We heard you.

Extensive feedback from RV enthusiasts and fine-tuning through rigorous testing and field trials are just some of the reasons the Adventurer is the best-selling Class A in the industry. Its fusion of homey features and well-planned designs was created with one thing in mind: your comfort.

Check out the PowerLine® Energy Management System, which automatically senses and controls 110-volt electrical usage; the RV Radio®, designed specifically for RV use with large knob controls, cassette/CD player and weather band; the solid-surface countertops in the bath and galley; a Sony® flat-screen stereo TV with remote; the OnePlace™ Systems Center; and the available Sleep Number® Bed by Select Comfort.™

You will notice these and many other key features pictured in this brochure, along with informative text. We provide this expanded level of detailed information so you can select the features that will make the Adventurer perfect for you.



38G-Beechwood with Portsmouth Oak

First-class entertainment.

Enjoy the added dimension you get from a variety of entertainment options, including the standard Sony 24" flat-screen stereo TV with remote (27" Sony on the 38R). The available stereo Sony DVD/VCR combo with remote, and a manual, powered or In-Motion RV digital satellite dish ensure that you'll never have to do without your favorite programs or movies. Enjoy the luxury of movie-theatre-quality sound with the available Deluxe Sound System with 5-channel QSurrround™. Select the available 300-watt inverter and enjoy these features even when you're not connected to shoreline or generator power.



38G-Beechwood with Portsmouth Oak

Pleasant dreams.

The bedroom slideout offers abundant living and storage space, a tip-out clothes hamper (most models), mirrored wardrobe and a changing area. You'll enjoy a good night's rest on the walk-around queen-size bed with either the Serta® innerspring mattress or the available Sleep Number Bed.



What's your number?

The available queen-size Sleep Number Bed by Select Comfort is another Winnebago Industries exclusive. Using the hand-held remotes on each side of the bed, you can quickly and independently adjust the mattress firmness level to your ideal level of comfort and support.



A little bit of everything.

Enjoy the spacious, well-designed bathroom. A single-control shower faucet with fixed showerhead includes a shutoff valve and Moen® Posi-Temp® control, which maintains a consistent shower even when water pressure fluctuates. Standard features include an overhead shower skylight; makeup lights; wall-mounted hair dryer with night-light; roof-mounted, power ventilator fan; abundant cabinetry and solid-surface countertops. Choose the available shower package with fold-down shower seat and hand-held showerhead on select models.



Grab brunch or go gourmet.

It's a pleasure to prepare meals in this spacious galley. Convenient features include a three-burner range with oven, a large double-door refrigerator/freezer and a 30" residential microwave with a sensor cook feature for perfect food preparation every time. A microwave convection oven is also available, as is a four-door refrigerator/freezer with icemaker (shown; not available on the 31Y or 33V). The recessed, molded sink is stain resistant, easy to clean and includes a water purification system with a separate faucet. Solid-surface countertops come with a flip-up extension (not available on the 37C) for even more valuable counter space.



Personal space or work space.

The desk/vanity area (not available on the 38R) features a multi-purpose countertop with a tip-up storage area, an additional phone/modem jack and a chair that folds for easy stowing. There is also a standard, built-in 19" TV.



Stock up.

Bring along the makings for all your favorite meals. It's easy with Adventurer's slideout pantry and adjustable shelves (not available on the 31Y). The double-door refrigerator with available icemaker is standard.



Have a seat.

The available BenchMark Full Comfort Dinette is a Winnebago Industries exclusive and features innerspring seat cushions to provide the look, feel and comfort of residential furniture. Flip up the seats to access the large storage space or fold down the table to quickly convert the dinette into a comfortable bed (not available on the 37C or 38R).



Park anywhere.

Not only is it attractive and comfortable, the hoop-base recliner can be repositioned anywhere you want when the motor home is not moving. It rocks, reclines, has a foot-rest and is also available in luxurious leather.



Dinner is served.

The standard dining table provides comfortable dining for two and easily expands to accommodate four place settings to entertain guests.



Flexibility.

The multi-function table provides dining for two, expands to accommodate four and also functions as a computer or hobby table (available on the 35U, 37C and 38G).



Sit back and relax.

It's a sofa! It's a recliner! It's a bed! It's all three! It's the Rest Easy® Multi-Position Lounge.



At the touch of a button, it goes from a sofa to a recliner with a pull-out ottoman.



Touch the button again and it's a comfortable 60" x 75" bed. A Winnebago Industries exclusive, Rest Easy features a flip-down center cushion with beverage tray (not available with dual recline). Fabric covering is standard or you can upgrade to the available leather. A dual recliner feature is also available.



Take to the road.

The cockpit of the Adventurer is designed with your driving pleasure in mind. A low-profile engine cover design allows for easier access to the driver and passenger front seats. The dash controls are conveniently located and feature large, easy-to-read switches and gauges that are sized for easier operation. The standard dash-mounted electronic compass is a helpful navigation tool and provides the exterior temperature at the touch of a button. Power sunvisors are available. The available Sony rearview color monitor system is built into the dash and includes one-way audio for safe backing and maneuvering.



Upfront convenience.

Pull out the standard passenger-side, dash-mounted workstation and you'll find a handy place for using your laptop computer, writing letters or playing cards. There is also a convenient storage area underneath.



Drive in comfort.

Arrive refreshed from your travels thanks to premium high-back cab seats. With multi-position armrests, swivel, recline and slide features, which are easy to reach and operate, you can adjust to the position that fits you best. Available upgrades include six-way power assist and leather.



Convenience center.

The 110-volt AC and 12-volt DC breaker panels along with two-way radios, rechargeable flashlight and hand-held vacuum cleaner are located in the easily accessible convenience center. On the 37C and the 38R, the two-way radios are located in a cabinet below the monitor panel in the hallway.



This radio's a "wow."

The RV Radio features large control knobs, easy-to-operate buttons, an AM/FM stereo cassette/CD player, a built-in weather band and a 10-disc CD changer. And you can run it from the house batteries by flipping the radio power switch.



Wash and wear.

Skip the trip to the Laundromat. Equip your Adventurer with the available washer/dryer combo (in the 37C, 38G and 38R only).



Stay in touch.

For communication in the campground or peace of mind on day trips, the four available two-way radios recharge from the coach's house batteries at their built-in charging station. The nickel-metal hydride batteries provide 15 hours of standby and 90 minutes of talk time on a single charge.

100 stations on this dial. SIRIUS

Upgrade your listening choices with Sirius™ Satellite Radio programming (requires the satellite-ready radio available fall 2003). It offers 100 channels of digital entertainment. High-altitude satellites deliver crystal-clear satellite programming anywhere in the U.S. with no signal fades. (Sirius Satellite Radio programming requires a subscription.)



Store more gear conveniently.

A Winnebago Industries original, StoreMore is still the industry's premium slideout system. StoreMore features large, well-lit exterior storage compartments that are designed to accommodate bulky and odd-shaped items. Automatic exterior compartment lights are door activated and a master light switch is located in the entrance area. Best of all, these compartments extend along with the slideroom for easy access without crawling under the slideroom. You'll also appreciate how easy it is to open the exterior compartment doors, thanks to single-paddle latches and gas struts.



No drips.

We don't overlook even the smallest detail: built-in rain gutters channel rain away from the sidewalls, doors and windows to help keep your Adventurer's exterior clean and streak free.

The quiet powerful type.

A 5,500-watt Onan® Marquis Gold™ generator is standard. Or select the available 7,000-watt model (shown) for even more capacity. Both feature digital voltage regulation and a self-diagnostic capability for simpler troubleshooting. An advanced vibration reduction design makes both of them the quietest RV generators in their class.



Easy in. Easy out.

The smooth-operating driver-side door and large assist handles make entry and exit more convenient.



Central water works.

Rinse off muddy or sandy gear outside at the exterior wash station. The same heated compartment also houses the major plumbing connections and service points for added convenience. Say goodbye to wrestling cords and hoses through small holes. QuickPort™ Service Connection Hatches make hookups a snap. And storage prep of the plumbing system is a breeze with the water system winterization package.



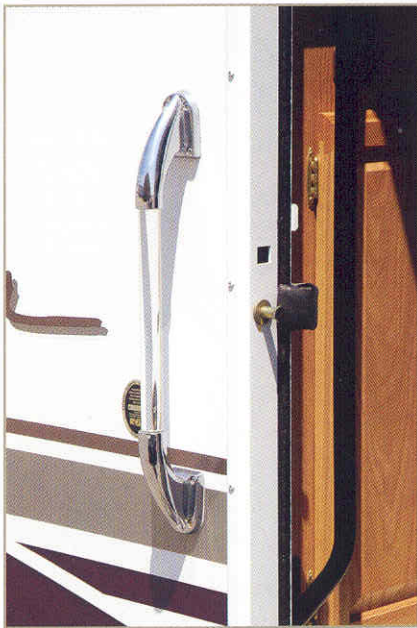
Less fuss.

The sewer hose includes the new QuickConnect™ Coupling Valve and storage holster for added convenience.



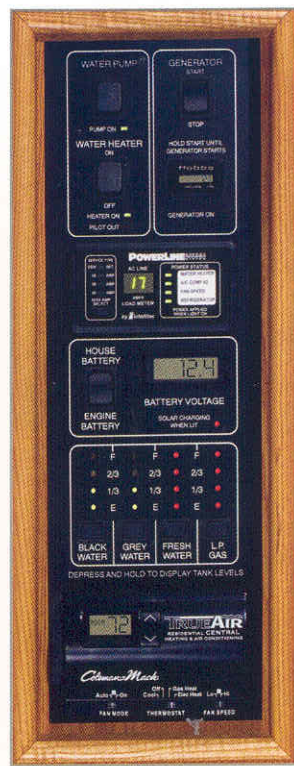
Seeing is believing.

Exterior mirrors feature amber turn signal lights and large flat and convex surfaces for expanded visibility and safety. Adjusting them is a snap thanks to the standard electric remote controls, which also include a defrost feature. The mirrors fold in easily for storage.



Get a handle on it.

Whether you are setting up at a campground or making a quick stop at a convenience store, the easy-to-grab exterior assist handle and extra-large interior assist bar help you get in and out with ease.



ONE PLACE
systems center

Everything is A-OK.

The OnePlace Systems Center places important and frequently used switches, gauges, levels and controls in one convenient location so you can check them at a glance. A courtesy light located above OnePlace allows you to easily locate the monitor panel at night.



The key to it all.

The KeyOne™ System allows one key to open most door locks. What could be simpler? For added convenience, the key is double-bitted so it easily fits into the lock no matter which way the key is inserted.



Now that's entertainment.

Adventurer comes equipped with an exterior entertainment center that includes AM/FM stereo with an antenna, CD player, 12-volt DC receptacle, TV jack, 110-volt outlet, speakers and a removable table. The compartment locks securely.



Enjoy the power.

Keep your electrical system running smoothly, even when operating your central air conditioning on a 30-amp. shoreline, with the PowerLine Energy Management System. It monitors onboard 110-volt electrical usage and automatically minimizes the nuisance of campground circuit breaker tripping by controlling the operation of "postponable" electrical loads during heavy power usage. As demand decreases, PowerLine automatically returns power to the secondary appliances and systems.

Select your perfect climate.

Interior climate control has never been better, thanks to Winnebago Industries' exclusive TrueAir Residential Central Air Conditioning. It utilizes superior cooling technology to supply optimum environmental control throughout the coach. At the heart of the system is a Coleman®-Mach® unit, which is located below the floor line of the coach. This not only provides a lower vehicle profile, it reduces interior noise and enables easier servicing. It also eliminates roof runoff from A/C related condensation and lowers the vehicle's center of gravity.



TrueAir's custom-designed electronic thermostat is easy to use and offers superior temperature control. Dual high-efficiency cooling circuits supply conditioned air through ceiling-routed ducts specifically designed to reduce airflow restrictions that can rob cooling efficiency. Improved interior air quality is provided by a residential-style filter that is larger and easier to replace than foam pad filters used on most roof-mounted A/C units. For more precise comfort, airflow volumes to specific areas are easily regulated to accommodate personal preferences, with individual ceiling-mounted vents that adjust for both airflow and direction.

The standard Home Comfort Plus Package includes an auxiliary automotive heater, insulated power roof vents in the bath and galley, and a heat pump for a convenient source of heat on cool mornings without starting the LP-fueled furnace.

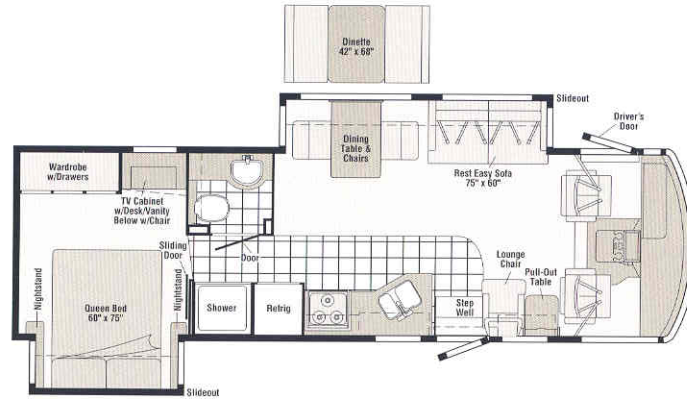
EXTERIORS

FLOORPLANS



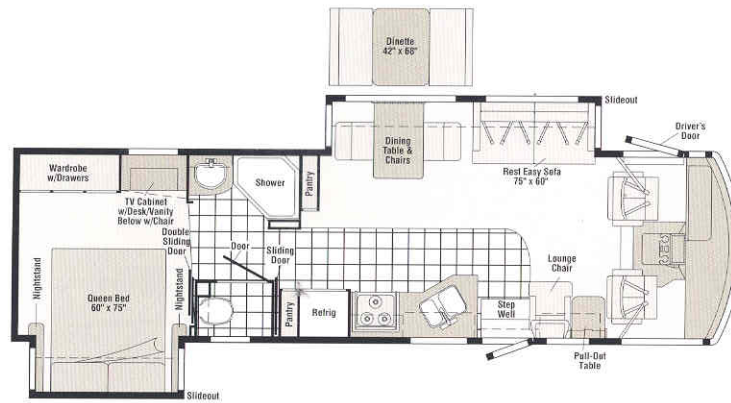
Cypress Green Metallic

Model 31Y



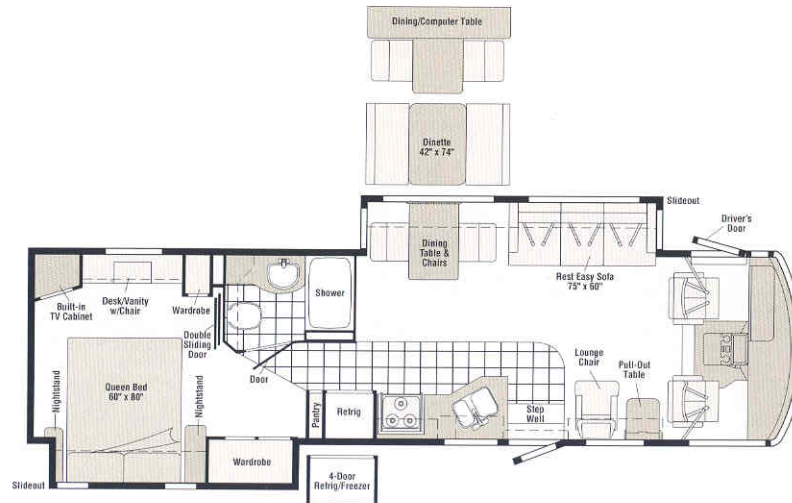
Sand Metallic

Model 33V



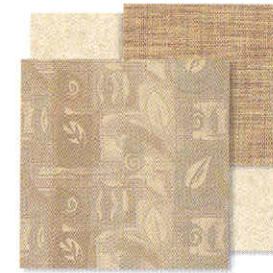
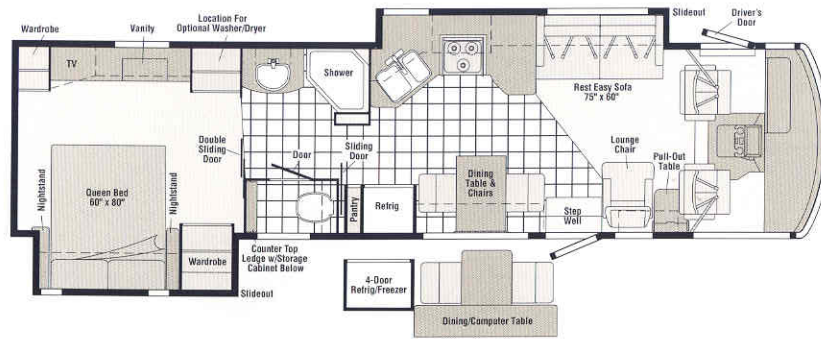
Warm Silver Metallic

Model 35U



Exterior valance colors are DuPont FlexShield™ basecoat/clearcoat, which provides a low-maintenance, high-gloss, automotive finish with maximum durability and chip resistance.

Model 37C

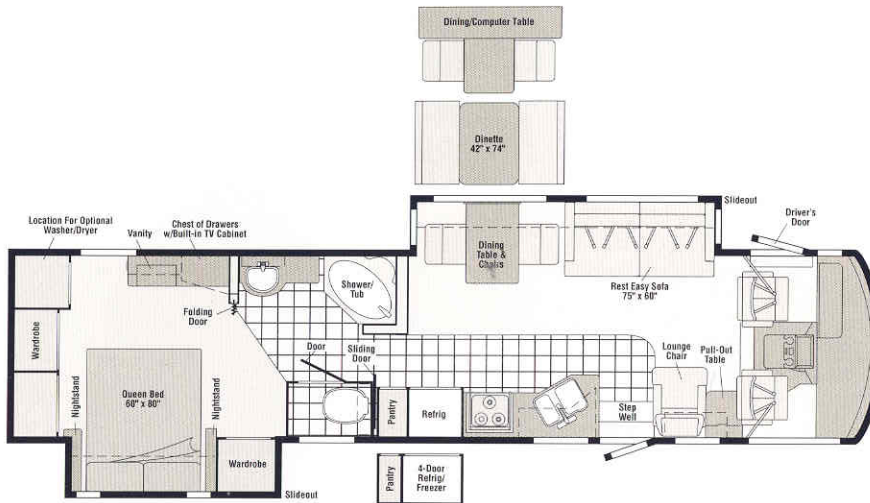


Beechwood

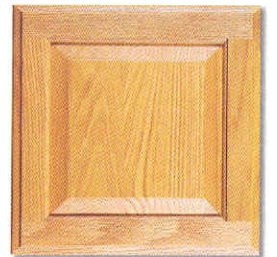


Concert Cherry

Model 38G

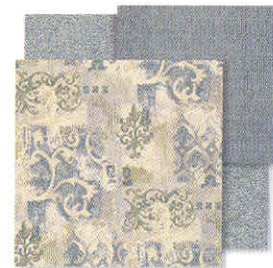


Estate Green



Portsmouth Oak

Model 38R



Loganbrook



Note: Dimensions shown are for sleeping space only and may vary due to styling differences. Dashed lines denote overhead storage areas.



The outside story.

Stainless steel wheel liners add a touch of class. Standard and available Ford® and Workhorse™ chassis ranging from 20,500 to 22,000-lb. gross vehicle weight ratings let you tailor your coach to perfectly fit your driving requirements. The 22,000-lb. Workhorse chassis offers 22.5" tires for a more diesel-like look and ride performance.

2004 Winnebago Adventurer® Specifications

	31Y	33V	35U	37C	38G	38R
Length	31'7"	33'7"	35'7"	37'4"	38'2"	38'11"
Exterior Height ^a – Ford/Workhorse	11'0" or 11'3"/11'2"	11'5" or 11'8"/11'4"	11'7" or 12'0"/10'11"¹/11'6"¹	10'11" or 11'2"/11'10"¹	11'5" or 11'8"/11'6"	NA/11'10"¹
Exterior Width ^b	8'6"	8'6"	8'6"	8'6"	8'6"	8'6"
Exterior Storage ^c (cu. ft.)	52.7	60.4	75.9	101.1	98.1	76.0
Interior Height	6'8"	6'8"	6'8"	6'8"	6'8"	6'8"
Interior Width	8'1"	8'1"	8'1"	8'1"	8'1"	8'1"
Fresh Water Capacity w/Heater (gal.)	90	90	90	90	90	90
Holding Tank Capacity – Black/Gray (gal.)	45/41	52/45	40/54	53/55	53/55	40/54
LP Capacity ^d (gal.)	28	28	28	28	28	28
Fuel Capacity (gal.)	75	75	75	75	75	75
GCWR (lbs.) ^e – Ford/Workhorse	26,000/26,000¹	26,000/26,000¹	26,000/26,000¹/26,000¹	26,000/26,000¹	26,000/26,000¹	26,000¹
GVWR (lbs.)	20,500/20,700¹	20,500/20,700¹	22,000/20,700¹/22,000¹	22,000/22,000¹	22,000/22,000¹	22,000¹
GAWR – Front (lbs.)	7,000/7,500¹	7,000/7,500¹	7,500/7,500¹/8,500¹	7,500/8,500¹	7,500/8,500¹	8,500¹
GAWR – Rear (lbs.)	13,500/13,500¹	13,500/13,500¹	14,500/13,500¹/15,000¹	14,500/15,000¹	14,500/15,000¹	15,000¹
Wheelbase	190"	208"	228"	248"	248"	248"

¹=Workhorse 20,700-lb. GVWR Chassis ²=Workhorse 22,000-lb. GVWR Chassis w/22.5" Tires

Standard - S Optional - O

AUTOMOTIVE/CHASSIS

Chassis – Ford 6.8L Super-Duty V10 SOHC Triton® engine, 310-hp, 4R100 electronic, 4-speed overdrive transmission, 130-amp. alternator, 4-wheel anti-lock brakes

Chassis – Workhorse 8.1L Vortec V8, 340-hp, Allison® 1000 electronic 5-speed overdrive transmission, 145-amp. alternator, 4-wheel anti-lock brakes

Leveling Jacks HWH® hydraulic, manual touchpad w/chime, **Tire spare** (NA on Workhorse 22,000-lb. chassis), **Tire Tool** wrench, **Trailer Hitch** 5,000-lbs. drawbar/350-lbs. (500-lbs. Workhorse) maximum vertical tongue weight & wiring, **Wheel Liners** stainless steel

CAB AREA & DRIVER CONVENIENCES

Cab Seats (Fabric) w/3-point adjustable seat belts, armrests, headrest, lumbar support, multi-adjustable swivel/slide/recline, **Cab Sound Control Package**, **Cigarette Lighter/12-Volt Powerpoint**, **Compass** electronic w/outdoor thermometer, **Convenience Tray**, **Cruise Control**, **Door** driver w/power window, assist bar, KeyOne (common key w/entrance door & exterior storage compartments), **Courtesy Light**, **Shade** front wraparound, pleated w/wands, **Driver Door** trim panel, w/beverage holder, power mirror controls, **Floor Mats** carpet driver & passenger, **Map Lights**, **Shades** light filtering, cab windows, **Shelf** passenger side w/beverage holder, storage, powerpoint, **Steering Wheel** tilt w/power assist, **Sunvisors (2)**, **Window** (passenger) full-slider w/screen, dual-glazed/thermo-insulated, **Windshield Wipers** intermittent, **Workstation** in dash

	31Y	33V	35U	37C	38G	38R
Cab Seats leather insert w/vinyl surround seating surface	O	O	O	O	O	O
Cab Seat Pedestal 6-way power assist (driver)	O	O	O	O	O	O
Cab Seat Pedestal 6-way power assist (driver & passenger)	O	O	O	O	O	O
Defroster Fans (2) auxiliary 2-speed w/instrument panel switch, Monitor System rearview w/single camera & 1-way audio, Sony, Sunvisors (2) powered, switch	O	O	O	O	O	O
GPS Navigation System (available fall 2003)	O	O	O	O	O	O

31Y 33V 35U 37C 38G 38R

Steering Wheel custom (only w/Workhorse 22,000-lb. chassis)

ENTERTAINMENT

CB Prep antenna, antenna lead, 12-volt powerpoint, **Entertainment Center (Exterior)** w/CD Player DC receptacle, AC duplex receptacle, AM/FM radio, exterior antenna jack, TV jack, radio antenna, speakers (2), lockable compartment, removable table, **MP3 Player**, **(Cab) AM/FM stereo cassette/CD w/weather band**, remote, roof-mounted flexible rubber antenna, speakers (4), **Radio Power Switch** main/auxiliary battery, **Satellite System Ready**, **Telephone** input & interior jacks, **TV 19" Color AC** w/remote, bedroom, **TV 24" Stereo Color AC** w/remote, flat screen, Sony, **TV Enhancement Package** antenna (amplified), interior jacks, coax wiring, cable input, antenna check reminder light, **Video Selection System**

	31Y	33V	35U	37C	38G	38R
Compact Multi-disc Changer , DVD/VCR Stereo combo w/remote, Sony	O	O	O	O	O	O
Entertainment Center TV 27" stereo color AC w/remote, Sony						S
Radios (4) two-way	O	O	O	O	O	O
Satellite Dish Antenna Winegard® RV digital, elevation sensing unit, manual	O	O	O	O	O	O
Satellite Dish Antenna Winegard RV digital, power	O	O	O	O	O	O
Satellite Dish RV digital, In-Motion, Winegard, Sound System Deluxe w/QSurround amplifier, speakers (5), sub-woofers (2)	O	O	O	O	O	O
Satellite Radio Sirius™ (available fall 2003)	O	O	O	O	O	O

INTERIOR

Accessory Package rechargeable flashlight, rechargeable vacuum cleaner, **Ceiling** fabric, **Clock**, **Lights** ceiling, incandescent, bath, bedroom w/wall switches, **Light** decorative oval, dining, **Lights** fluorescent, recessed, galley, lounge w/wall switches, **Lights** reading, **Mini Blind** galley & bath, **Shades** day/night pleated, lounge, dinette & bedroom, **Windows** dual-glazed/thermo-insulated

	31Y	33V	35U	37C	38G	38R
Standard - S Optional - O						
Light wall lamp (lounge area)			S	S	S	
Picture				S		S
Mirror	S	S	S	S	S	
CABINETRY						
Portsmouth Oak stile-and-rail construction w/raised panel inserts	O	O	O	O	O	O
Concert Cherry stile-and-rail construction w/raised panel inserts	O	O	O	O	O	O
FLOORCOVERING						
Carpeting w/pad, Vinyl Tile bath, galley	S	S	S	S	S	S
FURNITURE						
Dining Table & Chairs ^f (2) free standing, (2) folding	S	S	S	S	S	S
BenchMark [®] Full Comfort Dinette access to storage below	O	O	O		O	
Entertainment Center TV 27" stereo color AC w/remote						S
Lounge Chair ^f (Fabric) w/cabinet & table w/magazine rack, hoop-base, recliner, rocker, footrest	S	S	S	S	S	
Lounge Chair (Leather) hoop-base	O	O	O	O	O	O
Lounge Chair (Fabric) hoop-base, recliner, rocker, footrest						S
Multi-Purpose Table & Chairs ^f (2) free standing, (2) folding			O	O	O	
Reese [®] Easy [®] Multi-Position Lounge (Fabric) w/throw pillows (2) & fold-down beverage holder	S	S	S	S	S	O
Reese [®] Easy [®] Multi-Position Lounge (Leather)	O	O	O	O	O	O
Sofa (Fabric) J-Lounge, power, recline						S
Sofa (Leather) J-Lounge, power, recline						O
GALLEY						
Coffeemaker, Countertops solid surface, Faucet single-control, Light fluorescent, under cabinet, Microwave w/vented range fan, Range recessed, three-burner (one high-output) w/large oven, glass door, sealed burners, Amana [®] Range Cover, Refrigerator/Freezer large double-door, Norcold [®] Sink double-bowl molded w/sink covers (countertop material), Wastepaper Basket, Water Purification System w/separate faucet, Wall Border	S	S	S	S	S	S
Countertop Flip-up Extension	S	S	S		S	S
Magazine Rack						S
Microwave/Convection Oven Sharp [®]	O	O	O	O	O	O
Pantry w/adjustable shelves (33V w/dual pantries)		S	S	S	S	S
Range Top three-burner w/storage below, sealed burners, Amana	O	O	O	O	O	O
Refrigerator/Freezer large double-door w/icemaker, Norcold	O	O	O	O	O	O
Refrigerator/Freezer ^f four-door w/icemaker, Norcold			O	O	O	O
Utility Tray tip-out				S		S
BATH						
Cabinet lavatory, Cabinet medicine, Countertops solid-surface, Faucet (lavatory) single-control, Faucet (shower) single-control w/fixed shower head, Hair Dryer wall mounted w/night-light, Light shower, Lights makeup, Mirror, Shower Door textured glass, Shower Skylight, Sink oval, Tissue Holder, Toilet (Porcelain) w/foot-pedal flush & sprayer, Towel Rack 3-rod, mounted to door	S	S	S	S	S	S
Cabinet linen			S			S
Magazine Rack	S		S	S	S	S
Robe Hook	S			S	S	S
Shower	S	S		S		S
Shower w/removable clothes rod			S			
Shower/Tub						S
Shower Head hand-held	O			O		
Shower Package hand-held showerhead, fold-down shower seat		O	O	O		O
Towel Bar	S		S	S	S	S
Towel Ring	S	S		S	S	

- a The height of each model is based on the curb weight of a typically equipped unit on the standard chassis. The actual height of your vehicle may vary by as much as 2" depending on chassis or equipment variations.
- b Adventurer floorplans feature a wide-body design—over 96" in making your purchase decision, you should be aware that some states restrict access on some or all state roads to 96" in body width. Before making your purchase decision, you should confirm the road usage laws in the states of interest to you.
- c Your motor home's load capacity is designated by weight, not by volume, so you cannot necessarily use all available space when loading your motor home.
- d Capacities shown are tank manufacturer's listed water capacity (W.C.). Actual filled LP capacity is 80% of listing due to overfilling prevention device on tank.

	31Y	33V	35U	37C	38G	38R
BEDROOM						
Bed queen, innerspring mattress, w/underbed storage, Bedspread, Pillows, Throw Pillow, Ceiling Molding, Headboard, Lights decorative wall lamps (2), Nightstands (2), Powerpoint 12-volt DC receptacle(s), Wall Border, Wardrobe Cabinet carpeted floor, clothes rod, drawers (NA 35U & 38R), light, shelves (37C, 38G)	S	S	S	S	S	S
Hamper tip-out			S	S	S	S
Mirror backwall w/wood frame	S	S	S	S		S
Sleep Number Bed pillow-top	O	O	O	O	O	O
Vanity Cabinet w/fold-up countertop, folding chair	S	S	S	S	S	S
EXTERIOR						
Awning ^f patio, Awning Rails w/rain gutters, Door entrance w/separate screen door, deadbolt lock, Door fuel-fill, Entrance Door Steps electric w/doorjamb switch, Exterior Graphics Packages Sand Metallic Or Warm Silver Metallic Or Cypress Green Metallic, Ladder, Lights fog lamps, Light porch w/interior switch, Light driver-side service, Mirrors electric/remote w/defrost, Mudflaps front and rear, Receptacle AC duplex, Sidewall Skin one-piece smooth fiberglass, high-gloss, Storage Compartments smooth valance panels, trunk liner, gas struts, TriMark [®] KeyOne System, paddle latch, lights	S	S	S	S	S	S
Awning ^f patio, electric, w/wind sensor, remote, Undercoating Workhorse	O	O	O	O	O	O
SYSTEMS						
Automotive Heater/Air Conditioner, Auxiliary Start Circuit, Batteries (Coach) (2) deep cycle, group 24, Battery (Coach) disconnect system, Battery Charge Control automatic dual, Drain 1" water tank, Electrical Distribution System AC breaker, 55-amp. electronic converter/charger, Generator 5,500-watt, Onan Marquis Gold, gas, Generator/Shoreline Automatic Changeover Switch, ONEPLACE [®] Systems Center wall-mounted, battery digital voltmeter, energy management display, generator hourmeter gauge, generator start/stop switch, holding tank levels, LP tank level, solar panel/battery charger light, water heater switch & lights, water pump switch & light, water tank level, courtesy light, ceiling mounted, Power Cord 30-amp., POWERLINE [™] Energy Management System, Service Center (Drainage/Water), QuickPort [®] Service Connection Hatch city water hookup/tank diverter fill, drainage valves, exterior wash station w/pump switch, 10' sewer hose with QuickConnect [®] Coupling Valve, Service Center (Electrical) cable input, power cord, QuickPort [®] Service Connection Hatch, telephone input, Solar Panel 10-watt battery charger, Tank flushing system, black tank only, Tank holding, heated compartment, Tank LP, permanent mount w/gauge, TRUEAIR [™] Central Air Conditioning System, Water Heater 10-gallon electronic ignition, 120 vac/LP gas w/Motoraid, Water System Winterization Package water heater bypass valve & siphon tube, Water Pump demand, Water Tank Fill gravity w/locking door, Water Tank Fill pressurized city hookup w/diverter valve	S	S	S	S	S	S
Furnace 35,000 BTU, low profile	S	S				
Furnace 40,000 BTU, low profile			S	S	S	S
Generator 7,000-watt, Onan Marquis Gold, gas, Inverter ^f DC/AC, 300-watt Power Cord 50-amp.	O	O	O	O	O	O
Home Comfort Plus Package central air heat pump, auxiliary automotive heater, insulated powered ventilator fans (bath & galley)	S	S	S	S	S	S
Washer/Dryer Combination				O	O	O
Washer/Dryer Prep				S	S	S
SLIDEOUT						
Slideout Room (bed 31Y, 33V & bed/wardrobe 35U, 37C, 38G, 38R)	S	S	S	S	S	S
STORMORE [®] Slideout Room (sofa/dinette) w/slidoor cover	S	S	S		S	
STORMORE [®] Slideout Room (galley/sofa) w/slidoor cover				S		
STORMORE [®] Slideout Room (lounge/galley) w/slidoor cover						S
SAFETY						
Assist Bar interior, Assist Handle exterior, acrylic, Bumpers front & rear, Detectors/Alarms LP leak, smoke, carbon monoxide, Fire Extinguisher 10 B.C., Ground Fault Interrupter, Light center high-mount brake lamp, Light courtesy w/wall switch, Lights daytime running lamps, Window escape, Windshield laminated safety glass	S	S	S	S	S	S
WARRANTY^g						
12-month/15,000-mile basic limited warranty, ^h 36-month/36,000-mile warranty on structure, ^h 10-year limited parts & labor warranty on roof skin ^h	S	S	S	S	S	S

e Actual towing capacity is dependent on your particular loading and towing circumstances, which includes the GVWR, GAWR and GCWR, as well as adequate trailer brakes. Please refer to your vehicle's operator's manual for further towing information.

f Not all items available in combination. See dealer for details.

g See separate chassis warranty details provided in owner's packet.

h See your dealer for complete warranty information.

NA Not Available

Winnebago Industries' continuing program of product improvement makes specifications, equipment, model availability and prices subject to change without notice. Comparisons to other motor homes are based on the most recent information available.

Not all motor homes are created equal.

As you take a closer look, you'll see that there is much more to the Winnebago Adventurer than a long list of standard features and compelling floorplans. Beneath it all you'll find a SuperStructure® foundation of strength and durability, and Winnebago Industries' recognized service and warranty support.



We are committed to service.

We back our motor homes with the best after-the-sale service in the industry.

- 12-month/15,000-mile basic limited warranty
- 36-month/36,000-mile warranty on structure
- Standard 10-year limited parts-and-labor roof skin warranty
- Complimentary 24-hour Roadside Assistance Program
- TripSaver Fast Track Parts. TripSaver guarantees that in-stock warranty parts ship directly to your dealer within 24 hours
- Nationwide dealer service network



Certified quality.

Recreation Vehicle Dealer Association members annually rate RV manufacturers on the quality of their products, and on their sales and service support. Winnebago Industries has achieved the coveted Quality Circle Award every year since its inception, the only RV manufacturer to do so.



Learn more about what sets Winnebago Industries apart.

Ask your dealer for this guide. It will help you learn what makes Winnebago Industries motor homes distinctly superior to other brands.

Warning: Joining WIT has been known to cause excessive fun.

Winnebago-Itasca Travelers (WIT) is a club for owners of Winnebago Industries motor homes. WIT is a great way to meet people and offers you:

- Caravans and rallies
- Local and state group activities
- Benefits for RVers



WINNEBAGO Built proudly by
WINNEBAGO INDUSTRIES

©2003 Winnebago Industries, Inc., Forest City, IA 50436. Printed in USA.

Seat belts are your most important hookup. Always buckle up.

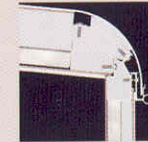
NYSE listing: WGO

Visit us at www.winnebagoind.com

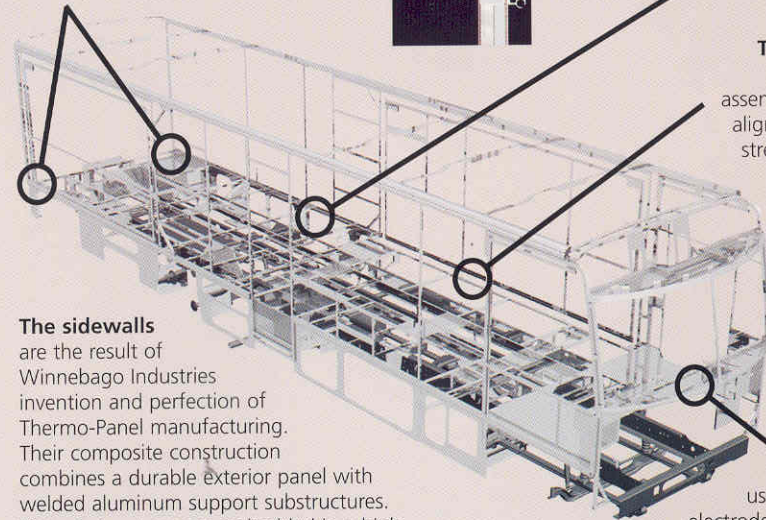
SUPER STRUCTURE

is the term given to Winnebago Industries' structural motor home design and construction. Rather than a single component, it is the culmination of design integration that incorporates steel and aluminum substructures; composite design laminated floor risers; interlocking joint technology; and Thermo-Panel® floor, roof and side-walls to form a high-strength, durable vehicle body.

Interlocking joint construction utilizes advanced extruded aluminum structural components to create integrated floor-to-sidewall and sidewall-to-roof joints. This design effectively distributes the weight of the walls and roof, making a stronger and more durable body than competitor designs that rely on screws to carry the weight.



Laminated risers feature a welded aluminum core for superior strength and provide a stable base for the floor structure and storage compartments.



The sidewalls

are the result of Winnebago Industries invention and perfection of Thermo-Panel manufacturing. Their composite construction combines a durable exterior panel with welded aluminum support substructures. The substructures are embedded in a high-density block foam insulation core to create a strong, durable, yet lightweight sidewall.

The foundation substructure

assembly is precision-aligned to maximize strength and cross-coach support as well as durability.

Critical steel components

are treated using an advanced electrodeposition coating process that provides superior corrosion protection.

Built to a higher standard.

Adventurer features a crowned, one-piece fiberglass roof skin backed with a 10-year limited parts-and-labor roof skin warranty. Fiberglass offers superior strength, attractiveness and durability over rubber roofs found on many competitive models. Over time, rubber roofs are susceptible to chalking, streaking and degradation, and have less puncture and tear resistance than fiberglass.



One-year-old competitor's rubber roof



One-year-old Winnebago Industries fiberglass roof