

The Ultimate Motor Home Experience.

2003 Ultimate Advantage®



2003 Ultimate Advantage
a rare gem

From the crisp, clean exterior design to the well-appointed interior, the 2003 Ultimate Advantage is everything a luxury motor coach should be.

This year's model lineup includes four unique floorplans that are each designed to maximize your living and bedroom space, including a triple slideout on the new 40K. If storage space is what you're looking for, you'll find it in the Ultimate Advantage. Its innovative Ulti-Bay® chassis offers incredibly responsive driving and handling characteristics with an impressively smooth ride, as well as large, accessible basement storage. We continue to raise the bar with improved cockpit ergonomics, a compressed air center and available full body exterior paint.

With all this, plus the finest amenities and Winnebago Industries' renowned craftsmanship, it's easy to see why the 2003 Ultimate Advantage is making waves in the luxury motor coach market.



▲ A leather love seat provides a cozy spot and is J-shaped for added comfort. (Available on the 38K and 40K)



▲ Take comfort in always knowing where you are and where you're going. An Alpine® GPS navigational system pinpoints your precise location and is available on every model.



▲ The cockpit puts you in total command with an ergonomic design that surrounds you with fingertip convenience. Standard, upscale features include an electronic compass with outdoor thermometer, stereo with a built-in 6-disc CD changer, built-in Sony® color rearview monitor and roof-mounted air horns. For added comfort, the SmartWheel™ steering wheel is wrapped in soft leather, tilts and telescopes for perfect positioning. It also incorporates the windshield wiper, cruise, courtesy blink lights and headlight dimmer controls for easy access. Bus-style power sunvisors are standard and the front privacy curtain features pull cords for easy opening and closing.

► Enjoy the inner beauty of a distinguished luxury coach. You'll find only the finest interior furnishings, including premium Villa furniture (with available leather upgrades). We took special care to place the overhead lights for optimal illumination.



40E – Taj Mahal interior with Portsmouth Oak



► Villa leather cab seats feature electric, adjustable lumbar support and 6-way power-assist seat pedestals for maximum comfort. The passenger area includes a convenient slider window and a powered stepwell cover which provides flooring in front of the passenger seat for comfort while traveling.



▲ The available TripTek™ computer displays trip information on the rearview monitor, including: distance to scheduled destination, time to destination, distance traveled, time traveled, fuel economy and a handy pre-trip checklist.

► If you thought you needed an extra excuse to stay in and enjoy the exquisite surroundings, check out the entertainment choices. The standard 25" television is fully enhanced with crystal clear 5-channel QSurround™ Sound for full theater enjoyment. An available In-Motion RV digital satellite system with receiver or available RV digital satellite dish can enhance your programming options. You can even watch a show when you're not connected to shoreline or generator power, thanks to the standard 1,500 watt inverter/charger.



2003 Ultimate Advantage
unrivaled sophistication



40E - Taj Mahal interior with Portsmouth Oak

▲ Creating a sumptuous feast or a quick snack is easy with the well-equipped galley. Upscale features include a 30" microwave/convection oven, solid-surface countertops, an available G.E. Advantium™ Speedcook microwave oven and even an available dishwasher (NA 36C). The molded, Swanstone™ solid-surface sink is stain-resistant for easy cleanup. It features a single-control Moen® faucet with pull-out sprayer and a separate Everpure® faucet for purified drinking water. Beautiful Portsmouth Oak, Concert Cherry or Washed Maple woodgrain cabinetry features dovetail construction and a beautiful catalyzed finish typically reserved for exclusive home cabinetry.



▲ Customize your galley with two refrigerator choices. A large, double-door refrigerator/freezer comes standard. This choice includes a slideout side pantry for additional dry goods storage. Or you can choose a 4-door refrigerator/freezer (shown here) if you prefer to keep more cold and frozen foods on hand. Both models include a standard icemaker.



▲ The available, keyed security vault has its own concealed location. It provides a safe place to keep important documents and valuables.



1



2



3

▲ The Rest Easy® Multi-Position Lounge offers unsurpassed seating flexibility and comfort.

1 It starts as a plush couch.

2 Touch the button and it becomes a relaxing recliner with pull-out ottoman.

3 Touch the button again and it's a 60" x 75" bed. Rest Easy is available in leather or fabric.



▲ This available, multi-function dining table seats two comfortably, expands to accommodate four and doubles as a convenient computer desk or hobby area.



◀ A walk-through design creates a spacious bathroom area. Added conveniences include a residential-height porcelain toilet, ceramic tile floorcovering, a solid-surface sink, an adjustable Moen® brass showerhead and a fold-down shower seat (NA 40K).



▲ The standard dining table provides a spacious dining area for two and quickly expands to accommodate four place settings when entertaining guests.



40E - Taj Mahal interior with Portsmouth Oak

▲ The standard, rear slideout opens wide to create a magnificent bedroom with a residential-size, walk-around queen-size bed. Stretch out and relax while watching the 19" color TV or drift off to sleep listening to the available rear stereo. For your storage convenience, a spacious, cedar-lined wardrobe is provided, along with underbed storage. The 40K even includes a convenient bedroom lavatory.



◀ Launder your clothes at your convenience with the available, built-in combination washer/dryer. It includes nine wash, and three time and temperature programmable cycles to accommodate a wide variety of fabrics and garments.

➤ The bedroom features a queen-size Sleep Number® Bed by Select Comfort™. Using the hand-held remotes on each side of the bed, you can quickly and independently adjust the mattress firmness level to your ideal level of comfort and support. . . your SLEEP NUMBER, which is The Key to a Perfect Night's Sleep!™



2003 Ultimate Advantage
interior/exterior color schemes

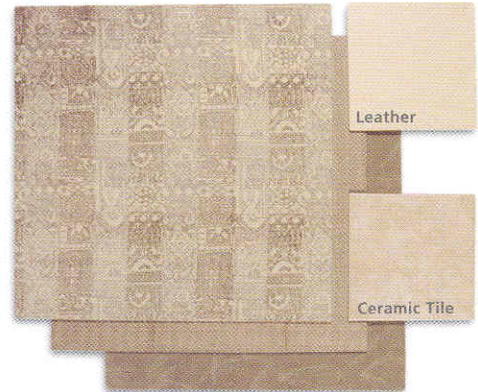
Blue Calais



Georgian Rosewood



Taj Mahal



Portsmouth Oak Woodgrain



Concert Cherry Woodgrain



Washed Maple Woodgrain



Slate Blue



Slate Blue (Full Body Paint)



Rosewood



Rosewood (Full Body Paint)



Harvest



Harvest (Full Body Paint)



2003 Ultimate Advantage
interior/exterior features



◀ The available, built-in central vacuum cleaner features a powered brush head, a full complement of accessories and a 30-ft. detachable hose that easily reaches the entire coach. There's also a VacPan® located at the base of the galley cabinets that whisks away sweepings without using any attachments. For exterior compartments, a second vacuum connection is located in the Ulti-Bay® storage area.



◀ A keyless remote locks and unlocks the entry and compartment doors. The KeyOne™ System also allows these doors to be opened with a single, double-bitted key.



◀ The Ulti-Bay® storage bays are spacious and include a pass-through section to accommodate oversized items, while the slideout trays make access even easier (NA 36C). The storage bay doors feature gas struts and single-paddle latches with enlarged finger clearance for easy, one-handed operation.



▲ For your outdoor enjoyment, we've included an exterior entertainment center. The AM/FM stereo with CD player is perfect for relaxing under the shade of the awning. It comes with a remote control and TV hookups.



◀ StoreMore® is storage the way it is supposed to be. With the StoreMore slideout system, the driver-side front exterior storage bays actually move with the slideroom for easy access, even with the slideout extended.



▲ You'll love relaxing in the shade of the available Carefree® One-Touch™ patio awning. It extends and retracts electronically and is constructed with new anodized aluminum hardware that matches your coach's body color. The powered entrance door awning and manual rear window awnings provide additional shade and protection.



◀ Major plumbing connections and service functions are well-positioned and clearly labeled for ease of operation. Tank and system levels can also be checked at the convenient exterior monitor panel. A hand-held showerhead, soap dispenser and paper towel holder are at hand for quick clean-ups. There are also powered reels available for your water supply hose and shoreline power cord.

POWERLINE ENERGY MANAGEMENT SYSTEM

Keep your electrical system running smoothly even when operating your central air conditioning on 30-amp. shore power. The PowerLine™ Energy Management System monitors onboard 110-volt electrical usage and minimizes the nuisance of tripped campground circuits by regulating the operation of postponable electrical loads during periods of heavy usage. As demand is lowered, PowerLine automatically returns power to the secondary appliances and systems.



TRUE AIR RESIDENTIAL CENTRAL AIR

Precision climate control is assured thanks to Winnebago Industries' exclusive TrueAir™ Residential Central Air Conditioning. TrueAir utilizes superior cooling technology to supply optimum environmental control throughout the coach. At the heart of the system is a Coleman®-Mach® cooling unit located in the basement to provide a lower vehicle profile while reducing noise and eliminating condensation runoff. You'll also find this location is much easier to service and provides a lower center of gravity than traditional, roof-mounted air conditioning units. A heat pump comes standard so TrueAir can help keep your Ultimate Advantage warm on cool days without running the furnace.

ONE PLACE systems center



The OnePlace Systems Center places important switches, gauges, level indicators and controls in one convenient location so you can easily check them at a glance.

2003 Ultimate Advantage exterior and chassis features

Mirrors Top-mounted electronic remote control mirrors feature both flat and convex surfaces that are strategically positioned to provide increased visibility and safety. Electronic defrost helps keep the oversized mirrors clear.

Service Points We designed the Ultimate Advantage to provide convenient access to service points such as the air cleaner, fluid fills and diagnostic plugs.

82.77" Wheel Track The Ultimate Advantage features an ultra-wide wheel track for better handling and increased stability.

Hitch A 10,000-lb. draw bar capacity trailer hitch is standard to accommodate towing needs.†

Fiberglass Roof Ultimate Advantage features a one-piece fiberglass roof backed with a 10-year limited parts and labor roof skin warranty.

Insulated Roof Vents Roof vents improve circulation and are insulated for thermal efficiency.



Tires Michelin® XZA2 tires are mounted on precision-machined, stylized aluminum wheels (XZA1-40K).

Dual Fuel Fills Fuel fills are located on both sides of the coach for convenient fueling from any pump.

Air Intake The engine air intake is positioned high on the sidewall to prevent road grime and debris from entering the engine air supply. This prolongs filter life and allows the engine to perform to its potential.

Air-line System Draining Draining the air-line system of condensation is recommended on all vehicles with air brakes and air suspension. Automatic system dryers and heated air system drains include remote lanyard controls so you'll never have to crawl under the chassis to perform this routine maintenance on your Ultimate Advantage.

Side Mounted Radiator The radiator is mounted on the side of the coach for improved airflow and cooling.



▲ An optional, full-width rear mud guard helps deflect dust and small stones from the undercarriage and helps keep the coach and tow vehicle clean.



▲ An auxiliary air supply with a detachable 50-ft. hose offers a ready supply of compressed air.

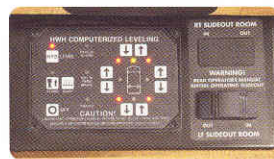


◀ Full anti-lock air brakes deliver impressive stopping power. The treadle foot brake pedal is mounted solidly to the steel cab deck to provide maximum brake pedal feel and control.



◀ Bigger is better. You might assume all luxury-class motor coaches deliver high-performance ride and handling. But the fact is, not all luxury-class motor coaches are created equal. The Ultimate Advantage utilizes the proven performance of a large, high-volume air bag strategically positioned at each wheel-suspension point to deliver responsive handling and a velvety smooth ride. Beware of less-advanced systems that use smaller, lower-volume bags that require multiple air bag mountings at each wheel. Not only are they more cumbersome, the additional air lines and connections increase the opportunity for system leaks.

▶ A 7,500 watt Onan® Quiet Diesel™ generator provides plenty of AC power. For added convenience, the generator slides out for easy servicing.



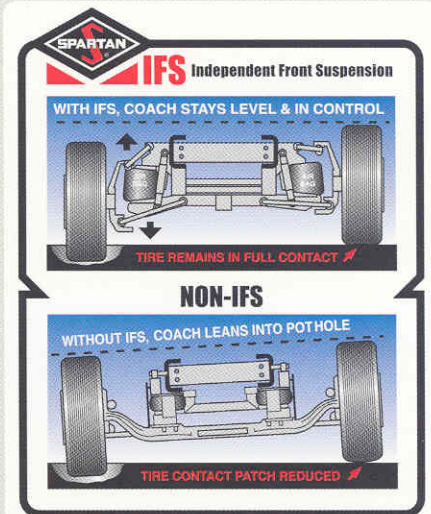
◀ Use the automatic leveling jacks for fast, convenient set-up when you've stopped for the day. HWH® leveling jacks provide over 20 tons of hydraulic power for rock-solid stabilization.



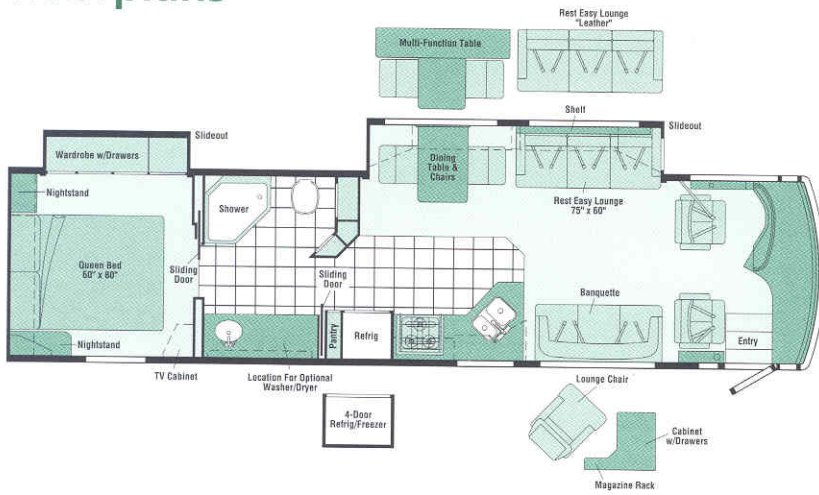
◀ A great engine deserves a great transmission, and that's exactly what you'll find in the Allison® 3000 MH. This six-speed transmission features adaptive electronic technology that actually enables it to adjust the shifting pattern based on your driving style. This results in smoother shifts between gears and, best of all, improved mileage.



◀ The 24-valve, 350-hp ISC 8.3L Cummins® diesel engine is equipped with a waste-gated turbo-charger for improved power and efficiency. It is also equipped with a Jacobs Exhaust Brake™ which utilizes engine exhaust to slow the vehicle and promotes longer brake pad life. A four-point mounting system cradles the engine, isolating the coach from torque-induced vibration and noise. Basic service intervals for oil and filter changes are recommended at 15,000 miles or 12 months under normal conditions, which reduces routine maintenance costs.

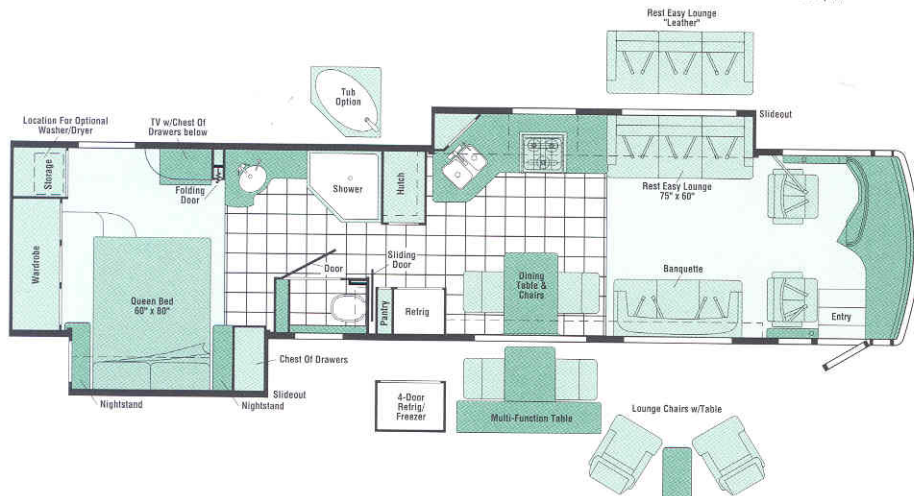
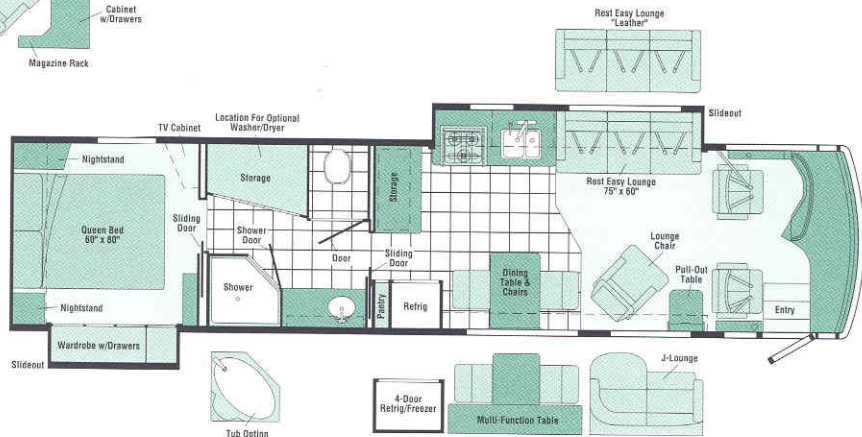


▲ Some luxury motor coaches still use straight axle technology that is popular in heavy trucks. But the Ultimate Advantage includes an advanced independent front suspension that provides greater lateral stability, eliminates bump steer and allows each wheel to move independently through its range of motion. As a result, each tire maintains better contact with the road for a smooth ride similar to that of a luxury sedan.



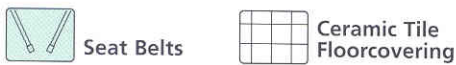
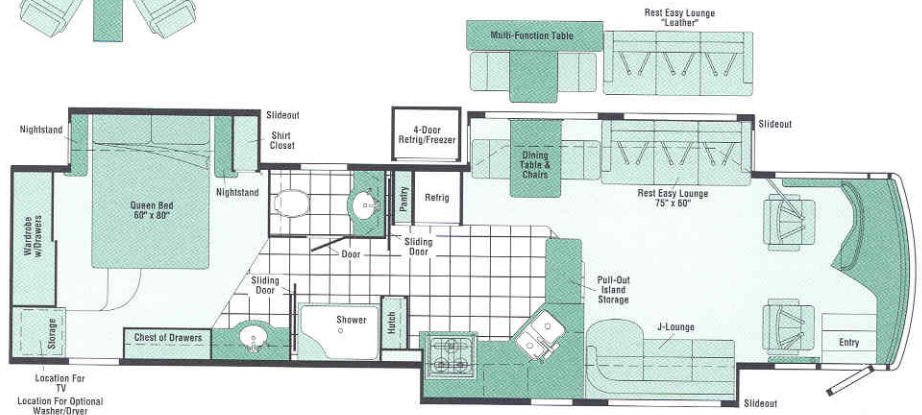
38K

- Lounge/galley w/ **STOREMORE** slideout system
- Bedroom wardrobe slideout
- Available dining/multi-function table
- **REST EASY** Multi-Position Lounge



40K NEW

- Lounge/dining table w/ **STOREMORE** slideout system
- Bed/nightstand slideout
- Available dining/multi-function table
- **REST EASY** Multi-Position Lounge
- J-Lounge/galley slideout



Note: Dimensions shown are for sleeping space only and may vary due to styling differences. Dashed lines denote overhead storage areas.

2003 Ultimate Advantage
specifications

Measurements & Weights

	36C	38K	40E	NEW 40K
LENGTH	36'7"	37'11"	39'11"	39'11"
EXTERIOR HEIGHT*	11'10 ⁵ / ₈ "	11'9 ⁵ / ₈ "	11'10"	11'10 ⁵ / ₈ "
EXTERIOR WIDTH [^]	8'5.5"	8'5.5"	8'5.5"	8'5.5"
EXTERIOR STORAGE ^{oo} (cu. ft.)	131 ⁸ / ₈	155 ⁸ / ₈	174	176 ⁸ / ₈
INTERIOR HEIGHT	6'8"	6'8"	6'8"	6'8"
INTERIOR WIDTH	8'0"	8'0"	8'0"	8'0"
FRESH WATER CAPACITY W/HEATER (gal.)	109	109	109	109
HOLDING TANK CAPACITY - BLACK (gal.)	50	50	50	50

Measurements & Weights (cont.)

	36C	38K	40E	NEW 40K
HOLDING TANK CAPACITY - GRAY (gal.)	54	54	54	54
LP CAPACITY ^o (gal.)	39	39	39	39
FUEL CAPACITY (gal.)	100	100	100	100
GCWR (lbs.)	42,000	42,000	42,000	43,700
GVWR (lbs.)	32,000	32,000	32,000	33,700
GAWR - FRONT (lbs.)	12,000	12,000	12,000	13,700
GAWR - REAR (lbs.)	20,000	20,000	20,000	20,000
WHEELBASE	227"	243"	267"	267"

Automotive/Chassis

	36C	38K	40E	40K
Chassis - Spartan® Mountain Master GT/Winnebago Industries®	S	S	S	S
ULTRA-BAY® Monocoque, Engine Cummins® ISC 8.3L turbo-charged/after cooled diesel, 350-hp @ 2,000 RPM; 1,050 ft. lbs. @ 1,400 - 1,600 RPM, electronic speed control, engine block heater (1,000 W), Jacobs Exhaust Brake, Allison® 6-Speed Electronic 3000 MH World Transmission touch pad gear selector, oil-to-coolant transmission cooler, ratios: 4 = 1.00:1; 5 = .75:1; 6 = .65:1, side-mounted radiator w/hydraulically driven fan, 50-state certification emissions control system, Independent Front Suspension (IFS) Spartan®/Granning, IFS1200, front suspension, (IFS/1370-40K), 82.77" track width, (83.14"-40K), Rear Axle Meritor® RS-19-145 w/Quiet-Gear, axle ratio 4.63, track width 72.87", Rear Suspension Reyco® 240AR air suspension, Brakes full air, engine driven compressor, air dryer w/automatic heated moisture ejector, lanyards on air tanks, four-wheel ABS, front 15" x 4" drum, rear 16.5" x 7" drum, park: rear axle service brakes, Battery Group 31 commercial, 1,140 CCA (2), Alternator 160-amp., Fuel Tank 100-gallon, LH & RH fill; fuel/water separator, Tires Michelin® XZA2 (XZA1-40K)				
Air Accessory Manifold air hose, pressure gauge, quick connect, shutoff, manual, Air Suspension, Leveling Jacks hydraulic, automatic touch pad w/indicator lights, Trailer Hitch 10,000-lb. draw bar/500-lb. maximum vertical tongue weight & wiring, Wheels stylized aluminum	S	S	S	S

Cab Area & Driver Conveniences

	36C	38K	40E	40K
Cigarette Lighter/12-Volt Powerpoint, Compass electronic w/outdoor thermometer, Console Center Cabinet, Defroster Fans (2) auxiliary 2-speed w/instrument panel switch, Floor Mat rubber, driver, Hood Release w/exterior key locks, Instruments/Gauges speedometer/odometer, tachometer, voltmeter, oil pressure, engine coolant temperature, fuel gauge, headlamp switch, transmission temperature gauge, dual air pressure gauge, turbo-boost gauge, ignition switch, horn, Leather Cab Seats (Villa) 6-way power assist w/3-point adjustable seat belts, multi-adjustable armrests, adjustable electric lumbar support, map pocket, swivel, recline, Map Lights (2), Color Monitor System rearview w/single camera & 1-way audio, Sony®, Power Door Locks keyless entry w/remote, Shades light filtering, cab windows, Steering Wheel custom 18" multi-plex SmartWheel™ leather wrapped w/Ultimate® logo & controls for windshield wipers, ICC courtesy blink lights, cruise, tilt w/power assist, Sunvisors (2) powered, Trim Panel driver side w/drink holder, 12-volt powerpoint, transmission shift pad, cellular phone holder, switches, Trim Panel passenger side w/drink holder, Window (driver & passenger) partial slider w/screen, dual-glazed	S	S	S	S
GPS Mapping System* Alpine®	0	0	0	0
Trip Computer TripTek™	0	0	0	0

Entertainment

	36C	38K	40E	40K
CB Prep antenna, antenna lead, 12-volt power supply, Entertainment Center (Exterior) AM/FM/CD Radio w/remote, 12-volt powerpoint, AC duplex receptacle, TV jack, radio antenna, speakers (2), telephone jack, Radio (Cab) AM/FM stereo CD w/6-disc CD changer, roof-mounted flexible rubber antenna, Radio Power Switch main/auxiliary battery, Satellite System Ready, Sound System Deluxe 5-channel w/QSurround™ front TV 25" AC color stereo w/remote, VCR stereo w/remote, amplifier, cube speakers (5), sub-woofers (2), Telephone input & interior jacks, TV 19" Color AC w/remote, bedroom, TV Enhancement Package antenna (amplified), antenna check reminder light, coax wiring, cable input, exterior jack, interior jack(s), Video Selection System	S	S	S	S
DVD (digital video disc) player w/remote	0	0	0	0
Satellite Dish Antenna* Winegard® RV digital, elevation sensing unit, manual	0	0	0	0
Satellite Dish Antenna* Winegard® RV digital, elevation sensing unit, power	0	0	0	0
Satellite System RV Digital, In-Motion w/receiver	0	0	0	0
Stereo System (Bedroom)* AM/FM CD player	0	0	0	0

Interior

	36C	38K	40E	40K
Blinds, Ceiling fabric, Ceiling Molding, Cupholder(s), Curtain front wraparound, pleated shade w/pull cords, Light decorative dining w/dimmer switch, Lights fluorescent, recessed w/wall switches, Lights incandescent, Lights halogen, under overheads, Lights reading, Light(s) wall lamp(s), Shades micro-pleated, day/night, lounge, dining & bedroom areas, Sliding Stepwell Cover Panel powered, Windows dual-glazed/thermo-insulated	S	S	S	S
Picture(s)		S	S	S
Central Vacuum Cleaner	0	0	0	0

	36C	38K	40E	40K
Woodgrain Portsmouth Oak stile-and-rail construction w/arched raised-panel inserts on upper doors & raised-panel inserts on lower doors	0	0	0	0
Woodgrain Concert Cherry stile-and-rail construction w/arched raised-panel inserts on upper doors & raised-panel inserts on lower doors	0	0	0	0
Woodgrain Washed Maple stile-and-rail construction w/arched raised-panel inserts on upper doors & raised-panel inserts on lower doors	0	0	0	0

Countertops

	36C	38K	40E	40K
Solid-Surface Countertops w/beveled edge, galley & bath	S	S	S	S

Floorcovering

	36C	38K	40E	40K
Ceramic Tile used throughout galley & bath areas, Carpeting w/pad	S	S	S	S

Furniture

	36C	38K	40E	40K
Banquette (Fabric) Villa w/throw pillows	S		S	
Banquette (Leather) Villa w/throw pillows	0		0	
Dining Table & Chairs (2) free standing, (2) folding	S	S	S	S
Dining/Computer Table & Chairs (2) free standing, (2) folding	0	0	0	0
Lounge Chair (Fabric) Villa hoop-base, (36C w/cabinet; 38K w/pull-up table)	0	S		
Lounge Chair (Leather) Villa hoop-base, (36C w/cabinet; 38K w/pull-up table)	0	0		
Lounge Chair (Leather) Villa Euro Recliner w/ottoman	0	0		
Lounge Chairs (2) (Leather) Villa Euro Recliner w/ottoman, hoop-base, w/fixed table in center			0	
Lounge Chairs (2) (Leather) Villa hoop-base, w/fixed table in center			0	
REST EASY® Multi-Position Lounge (Fabric) Villa w/throw pillows	S	S	S	S
REST EASY® Multi-Position Lounge (Leather) Villa w/throw pillows	0	0	0	0
J-Love Seat* (Fabric) Villa				S
J-Love Seat* (Leather) Villa		0	0	

Galley

	36C	38K	40E	40K
Coffeemaker, Faucet single-control w/pull-out sprayer, Moen® Light ceiling, fluorescent w/decorative wood frame, Light fluorescent, under cabinet, Microwave/Convection Oven w/Range Fan* residential 30", G.E.®, Mirrors, Pantry slideout, Range Top 3-burner w/storage below, recessed, sealed burners, Amana®, Range Cover bi-fold w/solid-surface overlay, Refrigerator/Freezer large double-door, w/wood raised-panel inserts, icemaker, Norcold®, Roof Vent powered ventilator fan	S	S	S	S

Galley (cont.)	36C	38K	40E	40K
Silverware Tray, Sink double-bowl molded Swanstone™ w/solid-surface sink covers, Towel Rack, Wastepaper Basket, Water Purification System separate faucet, Everpure®	\$	\$	\$	\$
Appliance Storage Cabinet			\$	
Cutting Board slideout		\$	\$	
Dishwasher built-in under countertop	0	0	0	0
Hutch		\$	\$	
Island			\$	
Microwave/Speedcook Oven w/Range Fan* residential 30" G.E. Advantium™	0	0	0	0
Range 3-burner w/large oven, glass door, recessed, sealed burners, Amana®	0	0	0	0
Refrigerator/Freezer* 4-door w/icemaker, w/wood raised-panel inserts, Norcold®	0	0	0	0
Utility Tray tip-out, located in front of sink		\$		

Bath	36C	38K	40E	40K
Cabinet(s) lavatory, Cabinet linen w/adjustable shelves, Cabinet(s) medicine, Faucet (shower) single-control w/flexible showerhead, Faucet(s) (lavatory) single-control, Moen® Light shower, Lights makeup, Roof Vent powered ventilator fan, Shower, Shower Door glass, Showerhead hand-held, Skylight, Sink(s) oval, solid-surface, Tissue Holder, Toilet (Porcelain) w/foot pedal flush & sprayer, Towel Bar	\$	\$	\$	\$
Hand Assist Rail	\$			
Magazine Rack			\$	
Mirror(s)			\$	
Roof Vent Fan lift & remote switch (private toilet area)		\$	\$	\$
Shower/Garden Tub*		0	0	
Shower Seat* fold-down	\$	\$	\$	
Shower Seat molded				\$
Towel Ring(s)				\$

Bedroom	36C	38K	40E	40K
Bed queen-size mattress, Sleep Number® by Select Comfort™ w/underbed storage, Bedspread w/pillow shams, Throw Pillows, Sleeping Pillows, Headboard, Ceiling Molding, Lights decorative wall lamps, Light ceiling w/dimmer switch, Lights adjustable reading, Nightstands (2), Wainscoting w/chair rail, Wardrobe Cabinet carpeted floor, cedar-lined, clothes rod, light, shelf, shoe shelf (40E, 40K)	\$	\$	\$	\$
Mirror w/beveled edge	\$	\$	\$	
Roof Vent powered ventilator fan	\$	\$		

Exterior	36C	38K	40E	40K
Air Horns roof-mounted, Assist Handle acrylic, lighted w/Ultimate® logo & doorbell button, Awning* patio, entrance door, Awning Rail, Door entrance w/separate screen door, deadbolt lock, keyless entry w/remote, dual-glazed window, Door fuel-fill, locking LH & RH sides, Doorbell, Entrance Door Step single, electric w/doorjamb switch, Exterior Graphics Packages Slate Blue recommended w/Blue Calais or Taj Mahal, Rosewood recommended w/Taj Mahal or Georgian Rosewood, Harvest recommended w/Taj Mahal or Georgian Rosewood, Ladder, Lights docking lamps, Lights fog lamps, Light porch light w/interior switch, Light service, driver side, Light under hood, Mirrors top-mount, electric remote w/defrost, Mudflaps rear, Receptacle AC duplex, Sidewall Skin 1-piece smooth fiberglass, high-gloss, Squeegee, Storage Compartments smooth valance panels, trunk liner, gas struts, Tri/Mark® KeyOne™ System w/power locks & remote, lights, Undercoating	\$	\$	\$	\$
Awning* window	0	0	0	0
Awnings* patio, entrance door, electric	0	0	0	0
Compartment Tray slideout	0	0	0	0
Exterior Full Body Paint Slate Blue recommended w/Blue Calais or Taj Mahal, Rosewood recommended w/Taj Mahal or Georgian Rosewood, Harvest Recommended w/Taj Mahal or Georgian Rosewood	0	0	0	0
Mud Guard full-width (stainless steel w/lettering)	0	0	0	0
Spotlight roof mounted w/wireless remote	0	0	0	0
Water Supply Hose Reel 12-volt	0	0	0	0

Systems	36C	38K	40E	40K
Automotive Heater/Air Conditioner, Auxiliary Start Circuit, Batteries (Coach) (3) deep cycle, Battery Disconnect System (Coach), Battery Charge Control automatic dual, Battery Charging System (Chassis), Drain 1 1/2" water tank, Electrical Distribution System AC & DC breaker panels, Generator* 7,500 watt, Onan® Quiet Diesel, Generator/Shoreline Automatic Changeover Switch, Inverter/Charger converter, 1,500 watt w/remote panel, ONEPLACE™ Systems Center wall-mount, battery digital voltmeter, battery condition gauge, POWERLINE™ energy management display, generator hourmeter gauge, generator start/stop switch, heating/A/C thermostat, holding tank levels, LP tank level, solar panel/battery charger light, water heater switch, water heater on light & pilot indicator light, water pump switch, water tank level, Power Cord 50-amp, Superflex cord, POWERLINE™ Energy Management System, Service Center (Drainage/Water) drainage valves, holding tank flushing system, sewer hose, monitor panel, city water hookup/tank diverter fill, drain for fresh water system, exterior wash station w/pump switch, paper towel holder, soap dispenser, Service Center (Electrical) cable TV input, power cord, telephone input, Solar Panel 10 watt battery charger, Tank Flushing System black tank only, Tank holding, heated compartment, Tank LP, permanent mount w/gauge, TRUEAIR Residential Central Air Conditioning System heat pump, Water Heater 10-gallon electronic ignition, LP gas/120 vac w/Motoraid® Water Heater Winterization Bypass Valve manual, Water Pump demand w/accumulator tank, Water System Winterizing Valve manual, Water Tank Fill gravity, Water Tank Fill pressurized city hookup w/diverter valve	\$	\$	\$	\$
Furnace 25,000 BTU, low profile, secondary		\$	\$	\$
Furnace 35,000 BTU, low profile, primary		\$	\$	\$
Furnace 40,000 BTU, low profile, primary		\$		
Power Cord Reel 12-volt	0	0	0	0
Washer/Dryer Combination*	0	0	0	0
Water System Winterizing Kit automatic	0	0	0	0

Slideout	36C	38K	40E	40K
Slideout Room flat floor, lounge/dining table w/slideroom cover, STOREMORE®	\$			
Slideout Room lounge/dining table w/slideroom cover, STOREMORE®				\$
Slideout Room lounge/galley w/slideroom cover				\$
Slideout Room lounge/galley w/slideroom cover, STOREMORE®		\$	\$	
Slideout Room rear wardrobe w/slideroom cover	\$	\$		
Slideout Room bed w/slideroom cover		\$	\$	

Safety	36C	38K	40E	40K
Assist Bar(s) interior, Detectors/Alarms LP leak, smoke, carbon monoxide, Fire Extinguisher 10 B.C., Ground Fault Interrupter, Light center high-mount brake lamp, Lights courtesy w/wall switches, Lights daytime running lamps, Seat Belts cab, 3-point, Seat Belts lap (in selected areas), Window escape, Windshield laminated safety glass	\$	\$	\$	\$
Security Vault w/key	0	0	0	0

Warranty	36C	38K	40E	40K
12-month/15,000-mile basic warranty,	\$	\$	\$	\$
36-month/36,000-mile warranty on structure,**				
10-year limited parts & labor warranty on roof skin				

- The height of each model is based on the curb weight of a typically equipped unit on the standard chassis. The actual height of your vehicle may vary by as much as 2' depending on chassis or equipment variations.
 - Measurements are based on the most recent information available. See your dealer for specifications.
 - Ultimate Advantage® floorplans feature a wide-body design — over 96". In making your purchase decision, you should be aware that some states restrict access on some or all state roads to 96" in body width. Before making your purchase decision, you should confirm the road usage laws in the states of interest to you.
 - Your motor coach's load capacity is designated by weight, not by volume, so you cannot necessarily use all available space when loading your motor coach.
 - Capacities shown are tank manufacturer's listed water capacity (W.C.). Actual filled LP capacity is 80% of listing due to overfilling prevention device on tank.
 - Standard
 - Optional
 - Actual towing capacity is dependent on your particular loading and towing circumstances which includes the GVWR, GAWR and GCWR as well as adequate trailer brakes. Please refer to your vehicle's operator's manual for further towing information.
 - Not all items available in combination. See dealer for details.
 - See your dealer for complete warranty information.
- Winnebago Industries® continuing program of product improvement makes specifications, equipment, model availability and prices subject to change without notice. Comparisons to other motor coaches are based on the most recent information available.

2003 Ultimate Advantage
foundation of quality

ULTI-BAY CHASSIS

Ulti-Bay is Winnebago Industries' exclusive monocoque chassis design that provides abundant mid-coach storage, impressive driving and handling performance, as well as 10,000 pounds of towing capacity.**

Ulti-Bay combines front and rear Spartan® Custom Chassis elements with an advanced truss design that eliminates bulky, cumbersome center rails. To provide even more mid-coach storage, large components such as the water heater, furnace and holding tanks are located fore and aft of the mid-section to create large, unobstructed storage bays.

The Ulti-Bay chassis, combined with Winnebago Industries' proven SuperStructure™ construction process, helps make the Ultimate Advantage one of the safest and most durable motor homes on the road. It's all part of making the Ultimate Advantage the Ultimate Motor Home Experience.

** Ultimate Advantage features a tow bar rated at 10,000-lbs. capacity as a standard feature. Actual towing capacity can be further limited by other factors such as the weight of the vehicle as loaded and the type of towing to be performed. Check with your Ultimate Advantage dealer for additional towing specifications.



◀ Interlocking joint construction utilizes advanced aluminum structural components to create integrated floor-to-sidewall and sidewall-to-roof joints. This design effectively distributes the weight of the walls and roof, making a stronger and more durable body than competitors' designs which rely on screws to carry the weight.



◀ Winnebago Industries invented and perfected Thermo-Panel® manufacturing. The result is an advanced composite construction which combines a low-maintenance, durable exterior panel with welded aluminum support substructures

embedded in a high-density block foam insulation core to create a very strong, durable and lightweight sidewall.

For Sales and Service information contact:



Committed to service. We back our motor coaches with the best service after the sale in the industry.

- 12-month/15,000-mile basic limited warranty
- 36-month/36,000-mile warranty on structure
- Standard 10-year limited parts and labor roof skin warranty
- Complimentary 24-hour roadside assistance program
- TripSaver Fast Track Parts. TripSaver guarantees that in-stock warranty parts ship directly to your dealer within 24 hours.
- National dealer service network



Recognized quality. Recreation Vehicle Dealer Association members annually rate RV manufacturers on the quality of their products and sales and service support. Winnebago Industries has achieved the coveted Quality Circle award every year since its inception, the only major motor home manufacturer to do so.



All motor homes are not created equal. Learn more about what sets Winnebago Industries apart. Ask your dealer for this guide. It will help you learn what makes Winnebago Industries motor homes distinctly superior to other brands.



Warning: Joining WIT has been known to cause excessive fun. Winnebago-Itasca Travelers (WIT) is a club for owners of Winnebago Industries motor coaches. WIT is a great way to meet people and offers you:

- Caravans and rallies
- Local and state groups
- RV travel benefits

winnebagoind.com

Seat belts are your most important hookup. Always buckle up.

©2002 Winnebago Industries, Inc. Printed in the USA.

