

2003 Winnebago Journey®



*Journey*

A great beginning to diesel pusher adventures.



**Where convenience and luxury intersect.**

Expand your living space at the touch of a button with the StoreMore® slideout system. Premium Stitchcraft furniture adds comfort and durability and is available in leather for added luxury. In keeping with the functional beauty of the coach, the interior cabinetry is designed to optimize storage space and access to it. The doors and drawers also feature a catalyzed protective topcoat process that provides a highly durable, luxurious satin finish.

Superior interior climate comfort is maintained with floor-ducted, forced-air heating and ceiling-ducted TrueAir Residential Central Air Conditioning. The available heat pump lets you take the chill off on cool mornings without starting the furnace. Available dual-glazed windows offer increased thermal efficiency while standard day/night pleated shades enable you to select your level of light and privacy.

36L-Venice Green

**A diesel pusher that stands out from the crowd.**

Not ordinary, not even close. That's the 2003 Winnebago Journey. Not a stripped down coach on a diesel chassis, but an economically priced true diesel pusher with true diesel pusher features. The Freightliner® chassis has been specifically designed for the Journey with a powerful 300-hp Cummins® engine, Allison® 2000 MH electronic transmission and advanced suspension systems for more responsive driving and handling.

Created to meet the needs of serious diesel enthusiasts, the Journey is packed with comfort-enhancing amenities. Front and rear bedroom slideouts, the RV Radio™, TrueAir™ Residential Central Air Conditioning, premium Stitchcraft furniture, the OnePlace™ Systems Center and PowerLine® Energy Management System to name a few.

Exclusive features. State-of-the-art diesel pusher performance. Tried-and-true comfort and value. The Journey has everything you've come to expect in a Winnebago Industries motor home.



36C-Imperial Beige

**It's all about choices.**

Journey's variety of entertainment options begins with the 25" color TV, strategically positioned in a handsome wood-faced cabinet to provide great viewing angles from any seat in the house. The amplified antenna, video selection system, and the available VCR and/or digital satellite dish let you select from network programming, movies or premium channels. Enjoy movie-theater-quality sound when you select the Deluxe Sound System with 5-channel QSurround™. Additional available Journey entertainment features include a DVD player and a 300-watt inverter. Power additional 110-volt appliances with your house batteries when you choose the available 1,500-watt inverter/charger.

Journey offers the flexibility in features and floorplans that experienced RVers desire. Exhibit A: the variety of available seating and dining arrangements.



**Just the two of you.**

A banquette is a great place to relax and provides a cozy spot for two (available on the 34H, 36C and 36L).



**For the King or Queen of the road.**

The hoop-base lounge chair is a cozy rocker and a comfortable recliner with footrest. Best of all, it can be easily moved to your favorite spot when you're not traveling. Standard or available on all models.



**Eat. Store. Snore.**

The newly designed BenchMark™ Full Comfort Dinette features innerspring seat construction for residential style and comfort. Flip up the seats for easy access to large storage areas. BenchMark also quickly converts into a comfortable bed.



**Two plus two.**

The dining table provides spacious dining for two, and easily expands to accommodate four place settings for entertaining guests (available on the 34H, 36C and 36L).

**Sit back and relax.**

The Rest Easy™ Multi-Position Lounge offers seating flexibility and comfort.



It starts as a plush couch.



At the touch of a button, it becomes a relaxing recliner with pull-out ottoman.



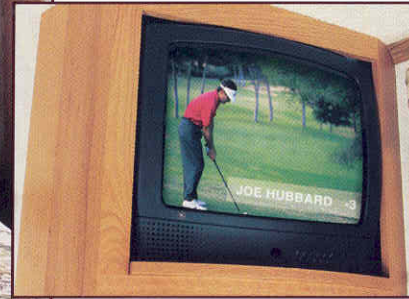
Touch the button again and it's a comfortable, contoured 60" x 75" bed (not available on the 32T).



36L-Venice Green

**Sweet dreams.**

The standard rear bedroom slideout comes with a walk-around queen-size bed, Serta® innerspring mattress and underbed storage. The spacious built-in wardrobe features large drawers and plenty of hanging storage space. Passenger and driver-side bedroom windows provide improved cross ventilation.



**And in this corner.**

The built-in, 19" rear bedroom TV is corner-mounted for optimum viewing.



**Compliments to the chef.**

The galley in the Journey features spacious solid-surface countertops, low-maintenance vinyl plank flooring, recessed fluorescent lighting, a 30" residential microwave and available microwave convection oven.



**Put it on ice.**

A double-door refrigerator and the pull-out pantry cabinet are standard. An icemaker is also available. Select the available four-door model for even more cold storage capacity.



**At your convenience.**

The available built-in, combination washer/dryer features multiple wash, time and temperature cycles for a wide variety of fabrics (not available on the 32T).



**Bathe yourself in comfort.**

A skylight lends a spacious feel to the bath area. Upscale features include a residential-height porcelain toilet, molded sink and single-control brass faucet. Enjoy plenty of hot water thanks to the 10-gallon water heater with Motoraid that operates on LP or 110-volt electrical. The linen cabinet offers abundant storage space. Available Journey bath upgrades include solid-surface countertops, hand-held showerhead and fold-down shower seat.



**Plugged in.**

A Black and Decker® rechargeable flashlight and vacuum are conveniently located so you won't be caught in the dark and you'll always be ready for a quick cleanup. In the bathroom, the wall-mounted hair dryer has a convenient night-light.



**Take a load off.**

High-back, custom-designed Stitchcraft driver and passenger cab seats provide a perfect fit. Popular upgrades include leather, six-way power assist and this convenient footrest for the passenger seat. The power stepwell cover closes at the touch of a button to create a flat floor in front of the passenger seat.



**Trip computer.**

The available TripTek™ computer collects, analyzes and saves vehicle data while displaying trip information on the rear vision monitor. Displays include miles and time to destination, time traveled, fuel economy and a handy pre-trip checklist.



**Everything's right there.**

You're in command because the cockpit-style dash places precision driving controls at your fingertips. The steering wheel is sized for responsive handling and features both tilt and telescoping functions. The electronic transmission controls and engine exhaust brake are located on the left-side driver's panel for easy visual reference and operation. Get your bearings or the outside temperature with the electronic compass/thermometer. The available dash-mounted Sony® rearview monitor system simplifies backing and maneuvering.



**One look.**

The OnePlace Systems Center puts vital switches, gauges, levels and controls in one convenient location, so you can check them at a glance.

**Spread the cool around.**

Interior climate control has never been more precise, thanks to Winnebago Industries TrueAir Residential Central Air Conditioning. It utilizes superior cooling technology to supply optimum comfort to every part of the coach. At the heart of the system is a Coleman®-Mach® cooling unit, located below the floor line of the coach. The unit provides a low vehicle profile and center of gravity, plus reduced interior noise and easy access for service. On cool days, the available heat pump provides heat, minimizing the need to use LP.



**Power manager.**

Keep your electrical system running smoothly, even when operating your central air conditioning on a 30-amp. shoreline, with the PowerLine Energy Management System. It monitors onboard electrical usage and automatically minimizes the nuisance of campground circuit breaker tripping by controlling the operation of "postponable" electrical loads when demand peaks during heavy power usage. As demand is lowered, PowerLine automatically returns power to the secondary appliances and systems.



**POWERLINE™**



**RV-RADIO™**

**Designed exclusively for RV use.**

Winnebago Industries engineers worked closely with the radio manufacturer to create the RV Radio—a radio designed specifically for motor home applications. Journey's AM/FM stereo radio has a cassette and CD player. Large control knobs and buttons are easy to operate. A weather band feature provides weather updates at the touch of a button.

**ONEPLACE™**



**The party starts here.**

Listen to your favorite music outdoors under the awning with the exterior entertainment center. A standard feature, it includes two speakers, a 12-volt power supply, TV jack and a patio table. Choose the standard AM/FM stereo with cassette or available CD player.



**Rain, rain go away.**

A rain gutter incorporated into the awning rail channels condensation and rainwater runoff away from the door and windows.



**You've got power.**

Enjoy electrical power wherever your travels take you with the standard LP-powered 6,500-watt Onan® Marquis Gold™ generator. A 7,500-watt Onan Quiet Diesel™ generator (shown) is also available.



**These mirrors don't miss a thing.**

Journey features exterior mirrors with increased surface area. But that's only part of the story. The mirror mounting positions were designed (after extensive research) to provide the best viewing angle. The result is exterior mirrors with a greater field of vision.

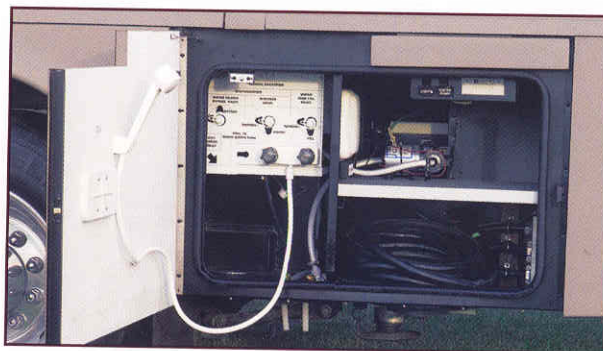
**Give your back a break.**

StoreMore features large, well-lit exterior storage compartments that are designed to accommodate bulky and odd-shaped items. Best of all, these compartments extend along with the slideroom for easy access without crawling under the slideroom. The exterior compartment doors open easily thanks to single-paddle latches and gas struts.



**One Key.**

Open almost everything with one key, thanks to the innovative KeyOne™ lock system. A single, double-bitted key opens most exterior compartments and doors so you won't have to fumble through a pocket full of keys.



**It's right in front of you.**

Service center features are user friendly with easy access and clearly labeled controls. The exterior wash station is handy for rinsing off equipment or sandy feet. 50-amp. electrical service is also available.



**Two-way radio.**

For communication in the campground or added peace of mind on day trips, the four available 14-channel radios have a 2-mile range and recharge from the coach's house batteries at their built-in charging station. Nickel metal hydride batteries provide up to 15 hours of standby and 90 minutes of talk time on a single charge.

### Easy maintenance.

Draining air line system condensation is a recommended service procedure on all vehicles that utilize air brakes and air suspension. Journey has automatic system dryers and heated air system drains that incorporate remote lanyard controls. This eliminates the need to crawl under the chassis to perform this routine maintenance function.



### High-mounted air intake.

The fresh air intake for the engine is positioned high on the sidewall to prevent road dust and grime from being introduced to the engine air supply. This prolongs filter life and increases engine performance.

### No gymnastics required.

The air filter and fluid level checkpoints are in easy-to-reach locations.

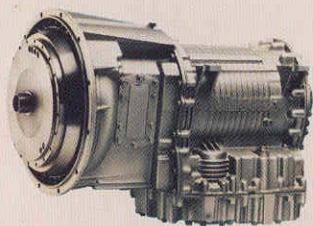


### Auxiliary air supply.

A convenient auxiliary air connection with detachable 50-ft. hose is standard and provides a ready source of compressed air for tires, balls, etc. (air chuck is not included).

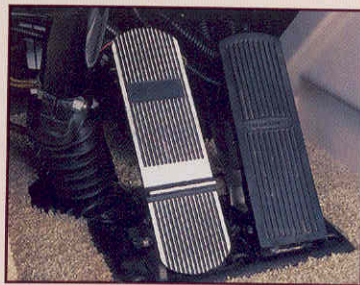
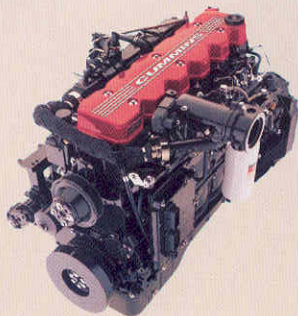
### These gears adjust to yours.

The 2000 MH five-speed Allison electronic control transmission is a proven performer. Smart logic enables it to "learn" your driving habits and fine-tune shift points accordingly for maximum performance.



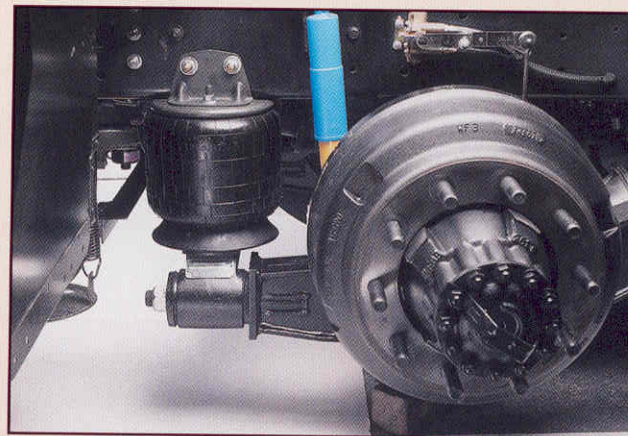
### More than enough horses.

Rugged diesel power provides exceptional torque and economy. The 5.9L 300-hp Cummins engine features advanced electronic controls for superior performance and fuel economy. The standard engine exhaust brake enables you to use the engine to slow the vehicle, promoting longer brake life.



### Stopping power.

Journey features anti-lock air brakes for improved braking in all conditions. Enjoy maximum brake feel and control thanks to the treadle foot-brake pedal mounted solidly to the steel cab deck.



### Floating on air.

The rear air suspension places larger air springs in a wide-track stance just inboard of the rear wheels. More efficient than less advanced multiple small-bag systems, it offers optimum stability while protecting the air springs from road debris kicked up by the tires. The air spring cushions the vehicle body from the travel movement of the rear axle. As the axle moves in relation to the coach, air pressure is automatically released or introduced to the air spring to maintain the proper ride height.

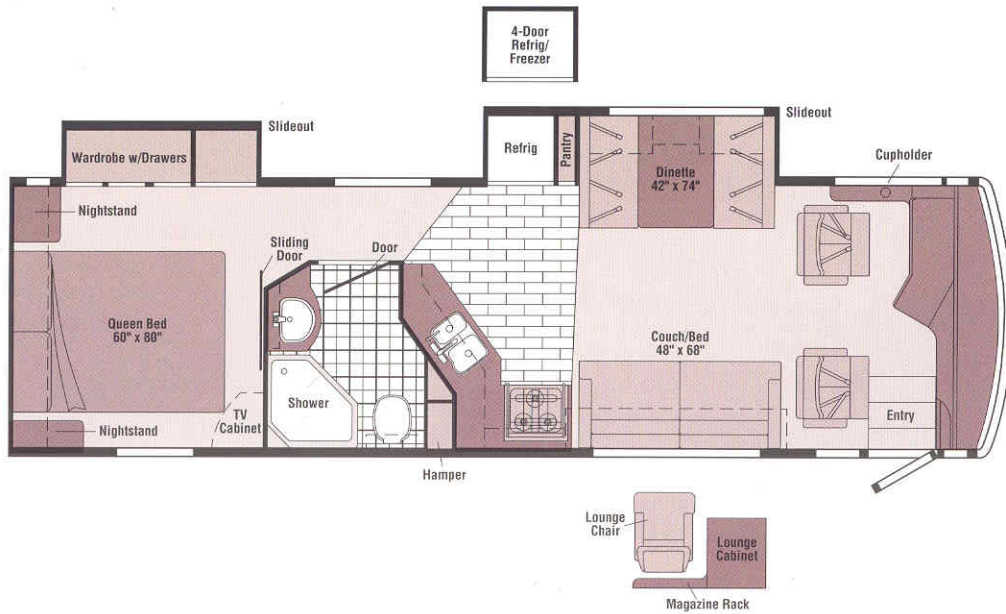
### Built to last.

When purchasing a new motor home, you may think that a chassis is a chassis is a chassis. But the chassis your RV is built on has a crucial impact on your overall experience. When it comes to a chassis, the manufacturer's history of design innovation with a proven track record of performance and a nationwide service network are significant factors to consider.

The Winnebago Journey is exclusively offered on a Freightliner chassis, specifically designed and created for its intended RV application. Freightliner has a well-known reputation for providing top-quality chassis and vehicles. This reputation and expertise is evident as you take the wheel of a Journey and experience the driving comfort, responsive handling and smooth ride. On top of that, you'll have access to a network of more than 350 Freightliner chassis service centers, many open 24 hours a day, seven days a week.



A Subsidiary of FREIGHTLINER CORPORATION



**32T**

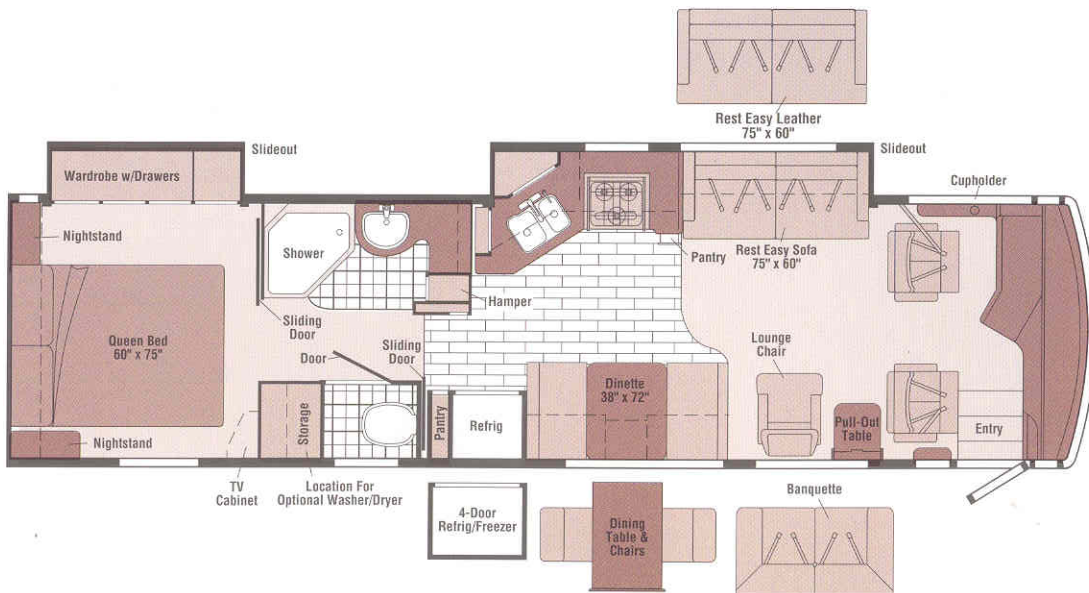
- Full Comfort Dinette
- Refrigerator/dinette **STOREMORE** slideout system
- Bedroom wardrobe slideout
- Large private bath area



Blue Dawn



Imperial Beige



**34H**

- Full Comfort Dinette
- Couch/galley **STOREMORE** slideout system
- Split bath design with private toilet area
- Bedroom wardrobe slideout
- Multi-Position Lounge
- Movable hoop-base lounge chair



Venice Green



Note: Dimensions shown are for sleeping space only and may vary due to styling differences. Dashed lines denote overhead storage areas.

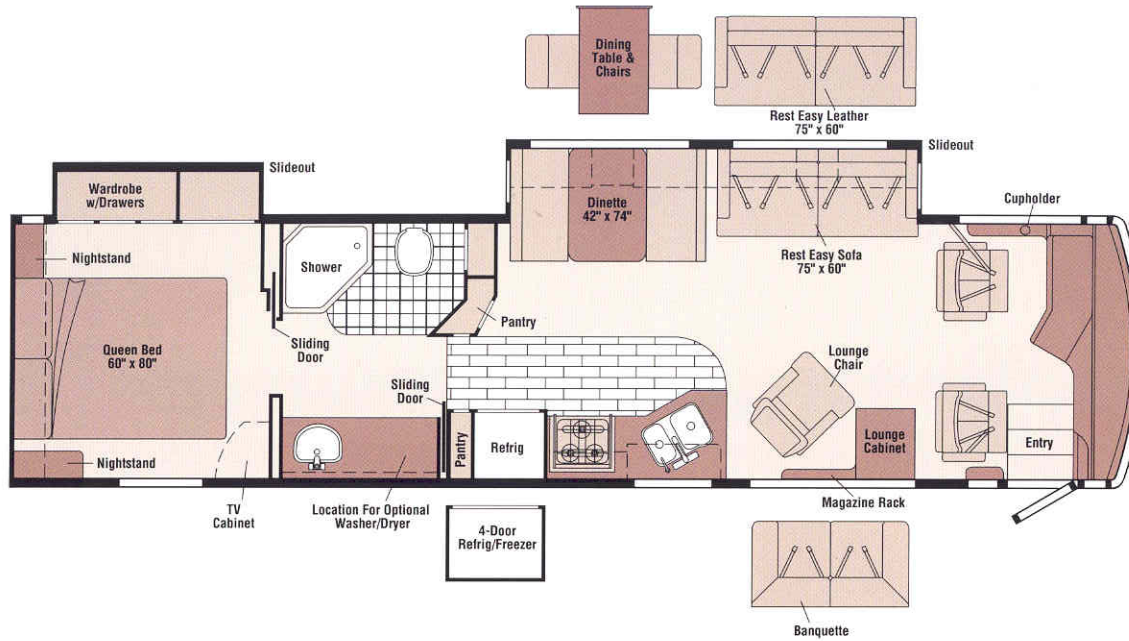




Concert Cherry Woodgrain

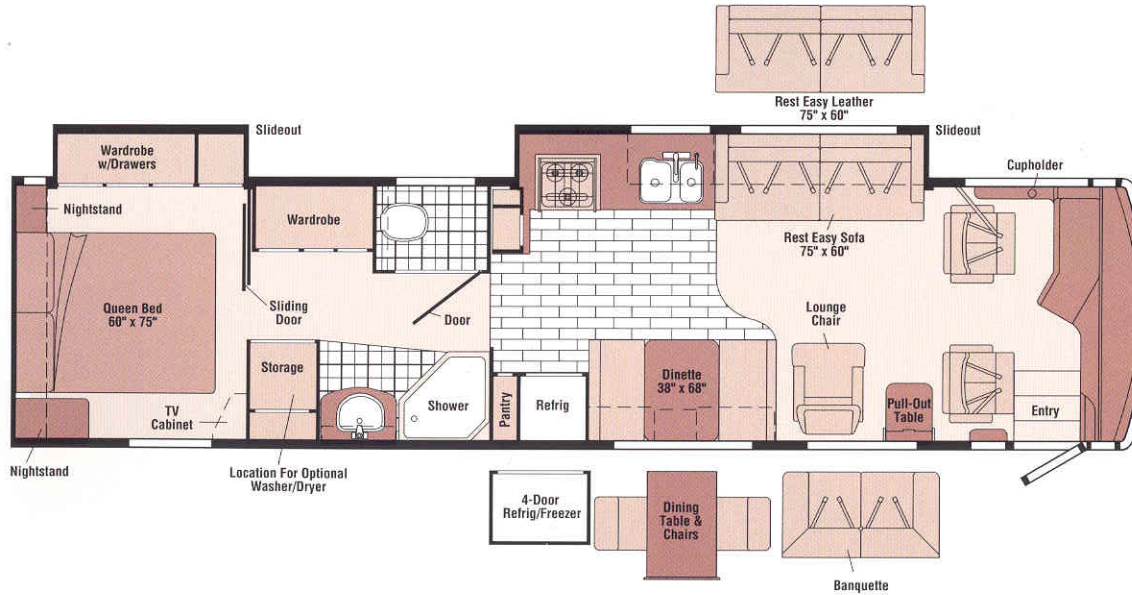


Portsmouth Oak Woodgrain



36C

- Full Comfort Dinette
- Dinette/couch **STOREMORE** slideout system
- Spacious bath area
- Bedroom/wardrobe slideout
- Multi-Position Lounge
- Movable hoop-base lounge chair



36L

- Full Comfort Dinette
- Couch/galley **STOREMORE** slideout system
- Split bath design with private toilet area
- Bedroom/wardrobe slideout and large bath area wardrobe
- Multi-Position Lounge
- Movable hoop-base lounge chair



### The outside story.

Journey's standard, one-piece, high-gloss fiberglass sidewall is amazingly tough—typical for Winnebago Industries design. Laterally mounted floor risers allow for true basement storage. Standard features include hydraulic jacks to keep your Journey super-stable and level when parked, and stainless steel wheel liners to resist corrosion over the long haul. A full-width mud guard is available.

## 2003 Winnebago Journey® Specifications

	32T	34H	36C	36L
<b>Length</b>	32'8"	34'9"	36'5"	36'5"
<b>Exterior Height*</b>	11'8"*	11'8"	11'8"	11'8"
<b>Exterior Width<sup>Δ</sup></b>	8'5.5"	8'5.5"	8'5.5"	8'5.5"
<b>Exterior Storage<sup>∞</sup> (cu. ft.)</b>	82.3*	98.0	108.4	117.3
<b>Interior Height</b>	6'8"	6'8"	6'8"	6'8"
<b>Interior Width</b>	8'0"	8'0"	8'0"	8'0"
<b>Fresh Water Capacity w/Heater* (gal.)</b>	96	96	96	96
<b>Holding Tank Capacity - Black/Gray (gal.)</b>	52/42	48/52	48/52	48/52
<b>LP Capacity<sup>◇</sup> (gal.)</b>	39	39	39	39
<b>Fuel Capacity (gal.)</b>	90	90	90	90
<b>GCWR (lbs.)</b>	28,000	28,000	28,000	28,000
<b>GVWR (lbs.)</b>	26,850	26,850	26,850	26,850
<b>GAWR - Front (lbs.)</b>	9,350	9,350	9,350	9,350
<b>GAWR - Rear (lbs.)</b>	17,500	17,500	17,500	17,500
<b>Wheelbase</b>	190"	208"	228"	228"

Standard - S Optional - O

32T 34H 36C 36L

### AUTOMOTIVE

<b>Chassis</b> - Freightliner, Cummins ISB 5.9L turbo-charged diesel 300-hp, rear radiator, Allison 5-speed electronic 2,000 MH transmission & NeWay® front and rear air suspension, 130-amp. alternator, exhaust brake, four-wheel ABS air brakes	S	S	S	S
<b>Air Accessory Manifold</b> quick connect, 50' air hose, pressure gauge, manual air shut off, <b>Leveling Jacks</b> hydraulic, manual touchpad, <b>Tire Tools</b> wrench & leverage bar, <b>Trailer Hitch</b> □ 5,000-lbs. drawbar/500-lbs. maximum vertical tongue weight & wiring, <b>Wheel Liners</b> stainless steel	S	S	S	S
<b>Wheels</b> stylized aluminum	O	O	O	O

### CAB AREA & DRIVER CONVENIENCES

<b>Cab Seats</b> (fabric) w/3-point adjustable seat belts, armrests, lumbar support (driver), multi-adjustable slide/recline & swivel, <b>Compass</b> electronic w/outdoor thermometer, <b>Console Center Cabinet</b> , <b>Cruise Control</b> , <b>Exhaust Brake Switch</b> , <b>Floor Mat</b> carpet, <b>Hood Release</b> , <b>Map Lights</b> , <b>Powerpoint</b> (2) 12-volt auxiliary, <b>Shades</b> light filtering, cab windows, <b>Steering Wheel</b> tilt w/power assist, <b>Sunvisors</b> (2), <b>Window</b> (driver) full slider w/screen, <b>Window</b> (passenger) dual-glazed, <b>Windshield Wipers</b> intermittent	S	S	S	S
<b>Cab Seat</b> 6-way power assist (driver)	O	O	O	O

32T 34H 36C 36L

<b>Cab Seats</b> 6-way power assist (driver & passenger)	O	O	O	O
<b>Cab Seats</b> leather insert w/vinyl surround	O	O	O	O
<b>Cab Seat*</b> passenger seat w/footrest	O	O	O	O
<b>Defroster Fans</b> (2) auxiliary 2-speed w/instrument panel switch	O	O	O	O
<b>Monitor System</b> rearview, w/black & white monitor, Sony	O	O	O	O
<b>Trip Computer</b> TripTek	O	O	O	O

### ENTERTAINMENT

<b>CB Prep</b> includes: antenna, antenna lead, 12-volt power supply, <b>CD Holder</b> , <b>Entertainment Center</b> (Exterior) w/ <b>Cassette</b> DC receptacle, AC duplex receptacle, AM/FM radio, TV jack, radio antenna, speakers (2), table, lockable compartment, <b>RV-RADIO</b> (Cab) AM/FM stereo cassette/CD, roof-mounted flexible rubber antenna, speakers (4), weather band, <b>Radio Power Switch</b> main/auxiliary battery, <b>Satellite System Ready</b> , <b>Telephone</b> input & interior jacks, <b>TV 19" Color AC</b> w/remote, bedroom, <b>TV 25" Color AC</b> w/remote, front, <b>TV Enhancement Package</b> antenna (amplified), interior jack(s), coax wiring, cable input, exterior jack, reminder light, <b>VCR</b> w/remote,* <b>Video Selection System</b>	S	S	S	S
<b>Compact Multi-disc Changer</b> Sony w/remote	O	O	O	O
<b>DVD Player*</b>	O	O	O	O
<b>Entertainment Center</b> (Exterior) w/ <b>CD Player</b> DC receptacle, AC duplex receptacle, AM/FM radio w/remote, TV jack, radio antenna, speakers (2), lockable compartment, table	O	O	O	O
<b>Radios</b> (4) two-way	O	O	O	O
<b>Satellite Dish Antenna</b> RV digital, elevation sensing unit	O	O	O	O
<b>Sound System</b> deluxe, w/5 channel QS surround sound, TV 25" stereo color AC, stereo VCR, amplifier, cube speakers (5), bass speakers (2)	O	O	O	O

### INTERIOR

<b>Ceiling</b> fabric, <b>Ceiling Fan*</b> Curtain front wraparound, pleated w/wands, <b>Light</b> wall lamp, <b>Lights</b> ceiling w/wall switches, incandescent, <b>Lights</b> fluorescent lights, recessed, galley, dinette, lounge w/2-way wall switches, <b>Lights</b> reading, <b>Picture</b> , <b>Shades</b> pleated, day/night, <b>Sliding Stepwell Cover Panel</b> powered	S	S	S	S
<b>Cupholder(s)</b>		S		S
<b>Accessory Package</b> rechargeable flashlight, rechargeable hand-held vacuum cleaner	O	O	O	O
<b>Mirror</b>		S	S	
<b>Windows</b> dual-glazed/thermo-insulated	O	O	O	O

### CABINETRY

<b>Woodgrain</b> Portsmouth Oak stile-and-rail construction w/raised panel inserts	O	O	O	O
<b>Woodgrain</b> Concert Cherry stile-and-rail construction w/raised panel inserts	O	O	O	O

### COUNTERTOPS

<b>Solid-Surface</b> galley, <b>Laminate</b> w/wood edge, bath, dinette, lounge table & bedroom	S	S	S	S
<b>Solid-Surface</b> bath	O	O	O	O


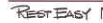
Standard - S Optional - O

32T 34H 36C 36L

**FLOORCOVERING**

Carpeting w/pad, Vinyl Plank galley and Vinyl bath	S	S	S	S
--	---	---	---	---

**FURNITURE**

BenchMark Full Comfort Dinette* access to storage below	S	S	S	S
Banquette* (fabric) w/throw pillows		O	O	O
Banquette* (leather) w/throw pillows		O	O	O
Chair lounge (hoop-base) w/magazine rack & cabinet	O		S	
Chair lounge (hoop-base) w/magazine rack & cabinet w/table			S	S
Lounge Chair* (leather) hoop-base	O	O	O	O
Dining Table & Chairs (2) free standing, (2) folding		O	O	O
Couch (fabric) w/throw pillows	S			
Couch (leather) w/throw pillows	O			
 Multi-Position Lounge (fabric) w/throw pillows		S	S	S
 Multi-Position Lounge (leather) w/throw pillows		O	O	O

**GALLEY**

Coffeemaker, Faucet single-control, Moen® Light fluorescent, under cabinet, Microwave w/exterior vent range fan, residential 30"; Sharp,® Pantry* slideout, Range 3-burner w/large oven, glass door w/storage below, recessed, sealed burners, Magic Chef® Range Cover flush-mounted, bi-fold (countertop material), Towel Rack wire, Refrigerator/Freezer large double-door, Norcold,® Roof Vent insulated powered ventilator fan, Silverware Tray, Sink molded double, w/sink covers (countertop material), Wastepaper Basket, Water Purification System Everpure®	S	S	S	S
Appliance Storage Cabinet		S		
Countertop Extension Flip-Up			S	
Magazine Rack*			S	
Microwave/Convection Oven w/range fan, residential 30", Sharp	O	O	O	O
Mirror			S	
Range Top 3-burner w/storage below, recessed, sealed burners, Amana®	O	O	O	O
Refrigerator/Freezer* 4-door w/icemaker, Norcold	O	O	O	O
Refrigerator/Freezer large double-door w/icemaker, Norcold	O	O	O	O
Spice Rack		S		
Utility Tray tip-out	S	S		S
Wall Border	S		S	S

**BATH**

Cabinet lavatory, Cabinet linen, Faucet (lavatory) single-control, Phoenix,® Faucet* (shower) single-control w/fixed showerhead, Hair Dryer wall-mounted w/night-light, Light shower, Lights make up, Roof Vent insulated, power, Shower w/wall surround, Shower Door textured glass, Shower Skylight, Sink oval, Tissue Holder, Toilet porcelain, w/foot-pedal flush & sprayer, Towel Ring(s), Towel Bar	S	S	S	S
Showerhead hand-held	O	O	O	O
Shower Package fold-down shower seat, hand-held shower head	O	O	O	O
Hamper tip-out	S	S		
Magazine Rack			S	
Medicine Cabinet	S		S	S
Mirror w/frame			S	
Robe Hook	S	S		S
Towel Rack 3-rod, mounted to door	S	S		S
Wall Border	S			S

**BEDROOM**








Bed queen, Serta, innerspring mattress w/underbed storage, Bedspread, Sleeping Pillows, Throw Pillow, Headboard, Ceiling Molding, Light decorative table lamp, Lights decorative wall lamps, Lights reading, Mirror beveled, Nightstands, Wall Border, Wardrobe Cabinet carpeted floor, clothes rod, drawers, light	S	S	S	S
---	---	---	---	---

32T 34H 36C 36L

**EXTERIOR**

Awning slideroom cover, Awning* patio, entrance door, Awning Rails w/rain gutters, Door entrance w/separate screen door, deadbolt lock, Entrance Door Step single, electric w/doorjamb switch, Exterior Graphics Packages Medium Titanium Metallic over Sand Metallic recommended w/Venice Green, Imperial Beige or Blue Dawn, Or Sand Metallic over Wineberry Metallic recommended w/Venice Green or Blue Dawn, Or Sand Metallic over Medium Titanium Metallic recommended w/Venice Green, Imperial Beige or Blue Dawn, Ladder, Lights fog lamps, Light porch light w/interior switch, Light under hood, Light compartment, Light service, driver side, Locking Fuel-fill Door, Mirrors electric remote w/defrost, Mud Flaps (2), Receptacle AC duplex, Sidewall Skin 1-piece smooth fiberglass, high-gloss, Storage Compartments smooth valance panels, trunk liner, gas cylinders, TriMark® KeyOne System, paddle latch, lights	S	S	S	S
Air Horns roof-mounted	O	O	O	O
Awning* patio, entrance door, electric	O	O	O	O
Mud Guard full width, rear	O	O	O	O
Undercoating	O	O	O	O

**SYSTEMS**

Automotive Heater/Air Conditioner, Auxiliary Start Circuit, Auxiliary 12-Volt PowerPoints (2), Batteries (Coach) (2) deep cycle, Battery (Coach) disconnect system, Battery Charge Control automatic dual,  Central Air Conditioning System, Drain 1 1/2" water tank, Electrical Distribution System AC & DC breaker panels, 55-amp. electronic converter/charger,* Generator 6,500-watt, Onan Marquis Gold, LP, Electronic Generator/Shoreline Automatic Changeover Switch,  Systems Center wall-mount, battery digital voltmeter,  energy management display, generator, hourmeter gauge, generator start/stop switch, heating/A/C thermostat, holding tank levels, LP tank level, solar panel/battery charger light,* water heater switch, water heater on light & pilot indicator light, water pump switch, water tank level, Power Cord 30-amp.,  Energy Management System, Service Center (Drainage) drainage valves, holding tank flushing system, 10' sewer hose, Service Center (Electrical/Water) cable inputs, city water hookup/tank diverter fill, drain for fresh water system, exterior wash station w/pump switch, power cord, shoreline/generator automatic changeover switch, telephone input, Solar Panel 10-watt battery charger, Tank flushing system, black tank only, Tank holding, heated compartment, Tank LP, permanent mount w/gauge, Water Heater 10-gallon electronic ignition, LP gas/110 vac w/Motoraid, Water Heater Winterization Bypass Valve manual, Water Hookup city, Wash Station exterior, Water Pump demand w/accumulator tank, Water System Winterizing Valve manual, Water Tank Fill pressurized city hookup w/diverter valve, Water Tank Fill w/locking door	S	S	S	S
Central Air Heat Pump	O	O	O	O
Furnace 35,000 BTU, low profile	S			
Furnace 40,000 BTU, low profile		S	S	S
Generator* 7,500-watt, Onan Quiet Diesel	O	O	O	O
Inverter* DC/AC, 300-watt	O	O	O	O
Inverter/Charger* DC/AC, 1,500-watt w/remote panel	O	O	O	O
Power Cord 50-amp. Superflex cord	O	O	O	O
Washer/Dryer Prep	S	S	S	S
Washer/Dryer Combination	O	O	O	O
<b>SLIDEOUT</b>				
Slideout Room wardrobe w/slideroom cover	S	S	S	S
Slideout Room couch/dinette w/slideroom cover, 			S	
Slideout Room couch/galley w/slideroom cover, 		S		S
Slideout Room refrigerator/dinette w/slideroom cover, 	S			
<b>SAFETY</b>				
Assist Bars interior, Assist Handle exterior, acrylic, Bumpers front & rear, Detectors/Alarms LP leak, smoke, carbon monoxide, Fire Extinguisher 10 B.C., Ground Fault Interrupter, Light center high-mount brake lamp, Light(s) courtesy w/wall switch(es), Seat Belts cab, 3-point, Seat Belts lap (in selected areas), Window escape, Windshield laminated safety glass	S	S	S	S

**WARRANTY**

12-month/15,000-mile basic limited warranty, 36-month/36,000-mile warranty on structure,** 10-year limited parts & labor warranty on roof skin	S	S	S	S
--	---	---	---	---

\* The height of each model is based on the curb weight of a typically equipped unit on the standard chassis. The actual height of your vehicle may vary by as much as 2" depending on chassis or equipment variations.

Δ Journey floorplans feature a wide-body design—over 96" in making your purchase decision, you should be aware that some states restrict access on some or all state roads to 96" in body width. Before making your purchase decision, you should confirm the road usage laws in the states of interest to you. \*Not all items available in combination. See dealer for details.

◇ Capacities shown are tank manufacturer's listed water capacity (W.C.). Actual filled LP capacity is 80% of listing due to overfilling prevention device on tank. \*\*See your dealer for complete warranty information.

□ Actual towing capacity is dependent on your particular loading and towing circumstances, which includes the GVWR, GAWR and GCWR as well as adequate trailer brakes. Please refer to your vehicle's operator's manual for further towing information.

∞ Your motor home's load capacity is designated by weight, not by volume, so you cannot necessarily use all available space when loading your motor home.

\* Measurements are based on the most recent information available. See your dealer for updated specifications.

Winnebago Industries' continuing program of product improvement makes specifications, equipment, model availability and prices subject to change without notice. Comparisons to other motor homes are based on the most recent information available.

## Not all motor homes are created equal.

As you take a closer look, you'll see that there is much more to the Winnebago Journey than a long list of standard features and compelling floorplans. Beneath it all you'll find a SuperStructure™ foundation of strength and durability, and Winnebago Industries' recognized service and warranty support.



### We are committed to service.

We back our motor homes with the best after-the-sale service in the industry.

- 12-month/15,000-mile basic limited warranty
- 36-month/36,000-mile warranty on structure
- Standard 10-year limited parts-and-labor roof skin warranty
- Complimentary 24-hour Roadside Assistance Program
- TripSaver Fast Track Parts. TripSaver guarantees that in-stock warranty parts ship directly to your dealer within 24 hours
- Nationwide Dealer service network



### Certified quality.

Recreation Vehicle Dealer Association members annually rate RV manufacturers on the quality of their products, and on their sales and service support. Winnebago Industries has achieved the coveted Quality Circle Award every year since its inception, the only major motor home manufacturer to do so.



### Learn more about what sets Winnebago Industries apart.

Ask your dealer for this guide. It will help you learn what makes Winnebago Industries motor homes distinctly superior to other brands.

### Warning: Joining WIT has been known to cause excessive fun.



Winnebago-Itasca Travelers (WIT) is a club for owners of Winnebago Industries motor homes. WIT is a great way to meet people and offers you:

- Caravans and rallies
- Local and state group activities
- Benefits for RVers

**WINNEBAGO** Built proudly by  
**WINNEBAGO**  
INDUSTRIES

© 2002 Winnebago Industries, Inc., Forest City, IA 50436. Printed in USA.

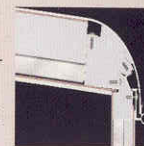
Seat belts are your most important hookup. Always buckle up.  
Visit us at [www.winnebagoind.com](http://www.winnebagoind.com)

# SUPER STRUCTURE

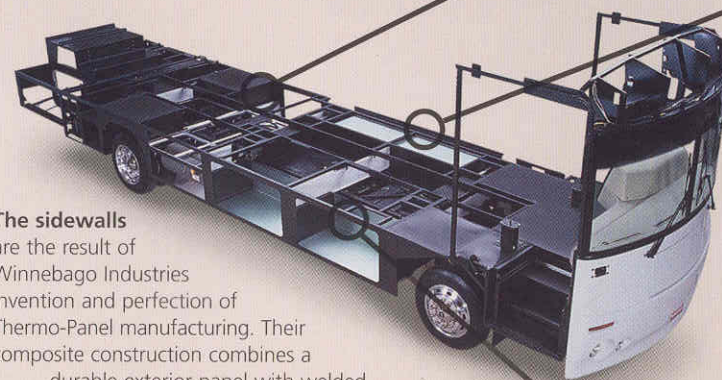
is the term given to Winnebago Industries' structural motor home design and construction. Rather than a single component, it is the culmination of design integration that incorporates steel and aluminum substructures, composite design laminated floor risers, interlocking joint technology, and Thermo-Panel® floor, roof and sidewalls to form a high-strength, durable vehicle body.

### Interlocking joint construction

Utilizes advanced extruded aluminum structural components to create integrated floor-to-sidewall, and sidewall-to-roof joints. This design effectively distributes the weight of the walls and roof, making a stronger and more durable body than competitor designs that rely on screws to carry the weight.



**Laminated risers** feature a welded aluminum core for superior strength and provide a stable base for the floor structure and storage compartments.

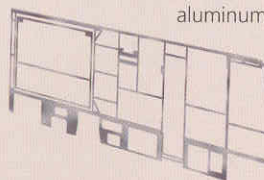


### The foundation substructure

assembly is precision-aligned to maximize strength and cross-coach support as well as durability.

### The sidewalls

are the result of Winnebago Industries invention and perfection of Thermo-Panel manufacturing. Their composite construction combines a durable exterior panel with welded aluminum support substructures.



The substructures are embedded in a high-density block foam insulation core to create a strong, durable, yet lightweight sidewall.

**Critical steel components** are treated using an advanced electrodeposition coating process that provides superior corrosion protection.

### Built to a higher standard.

Journey features a crowned, one-piece fiberglass roof backed with a 10-year limited parts-and-labor roof skin warranty. Fiberglass offers superior strength, attractiveness and durability over rubber roofs found on many competitive models. Over time, rubber roofs are susceptible to chalking, streaking and degradation, and have less puncture and tear resistance than fiberglass.



One-year-old competitor's rubber roof



One-year-old Winnebago Industries fiberglass roof