

Chieftain®

2001 WINNEBAGO



Chieftain 35U – Cloudburst

Chieftain's StoreMore® Hydraulic Slideout System creates an inviting living space and abundant interior and exterior storage access. TrueAir™ residential central air conditioning, located below the floor, provides convenient climate control. Thoughtfully positioned reading lights; updated furniture; window styling with available dual-glazed, thermo-insulated windows and the front 25-inch color TV and VCR add to the comfort and beauty of the interior.

**EVERYTHING YOU WANT IN A MOTOR HOME.**

As the gas-powered flagship of the Winnebago line, Chieftain's quality design, contemporary styling and luxury features are legendary. And you'll find even more new features for 2001, including the new Rest Easy™ Multi-Position Lounge (available in the 35U and 36W), an available deluxe sound system and additional lighting in the Chieftain's convenient StoreMore® compartments.

Practical upgrades that are standard features on Chieftain include a recessed, sealed-burner range; driver's door power window; a 25-inch front color TV and 19-inch rear bedroom TV; large 10-gallon LP/electric water heater and the new ultra-quiet Onan® Marquis Gold™ generator. Simply put, the new Chieftain makes getting away from it all more enjoyable than ever.

**Chieftain 35U – Cloudburst**

The extra space created by the bedroom slideout makes room for plenty of storage and work space, which includes a desk/vanity area, a tipout hamper, drawers and a built-in 19-inch TV cabinet.

Chieftain 35U – Cloudburst The Chieftain's spacious bedroom/wardrobe slideout creates an open and roomy area. Bedside nightstands with drawers, overhead storage and a large mirrored wardrobe give you plenty of places to keep your things. The queen-size Serta® innerspring mattress makes for comfortable sleeping or lounging.

WINNEBAGO

BUILT WITH YOU IN MIND



Rest Easy™ Multi-Position Lounge (Available on the 35U and 36W.)

We believe that this is the most innovative lounge you'll find in a motor home. It's a lounge, it's a recliner with a pull-out ottoman, and it's a 60-inch x 75-inch queen bed that folds down with the push of a button.



STORE MORE

StoreMore® Hydraulic Slideout System

Allows interior and exterior storage compartments to move with the slide room for easy access. Large exterior compartments accommodate bulky, oversized items.

PRACTICAL FEATURES FOR CAREFREE LIVING

Driver-Friendly Cab

The Chieftain's thoughtfully designed cab includes large, clearly labeled and easy to operate switches and controls. Standard amenities include a driver-side power window, large cupholders, a beverage tray, and a standard AM/FM cassette stereo. Reminder lights alert you to check TV/satellite antennae position whenever you turn on the ignition. And you'll stay on course with the dash-mounted, electronic compass and temperature gauge.

Cab seats feature adjustable armrests and a comfortable contoured front design. Available upgrades include six-way adjustable power driver and passenger seats, passenger-side footrest, and leather for both.

The passenger-side pull-out workstation is designed as a multi-purpose area that allows you to use a laptop computer, write letters or play cards. It doubles as a glove box storage area when closed.



Roomy Galley (34Y)

The Chieftain galley features a roomy pantry area, solid surface countertops, a stainless steel recessed double sink with single-control faucet, and a residential-style microwave/convection oven. You'll find the double-door refrigerator/ freezer with icemaker and Magic Chef® sealed three-burner range to be efficient, functional and a pleasure to use.



Spacious Bathroom (34Y)

Feel at home in the full-size shower with single-control faucet (fold-down seat and hand-held showerhead are available). Residential-height, foot-pedal flush toilet is standard, as are the roof vent and hair dryer with night-light.



Exterior Assist Handle

A large exterior and interior assist handle and smooth operating door latch are easy to grab to help you get in and out with confidence.



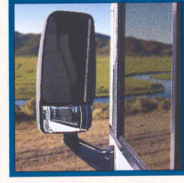
Awning Rail

Our innovative awning rail features a gutter system to channel water to the front and rear of the coach.



Hoop-Base Chair

It rocks, it reclines (with foot rest) and while the motor home is parked it can be moved wherever you need a comfortable place to sit.



Exterior Mirrors

Heated, electric adjustable mirrors offer a 58 percent larger view and repositioned mountings for added convenience.



Washer and Dryer

The available washer/dryer combo gives you the freedom to wash clothes whenever you want to. Stylish louvered doors conceal the unit when not in use.



ONE PLACE systems center

Check tank levels and power usages, and adjust the thermostat in one convenient location. The PowerLine™ Energy Management System minimizes campground circuit breaker tripping by temporarily cycling off "postponable" appliances when on-demand appliances such as a toaster or coffeemaker are in use. Power is returned once the load is reduced.



New Onan® Marquis Gold™ Generator

Your choice of the 5,500 or 7,000 watt Marquis Gold produces quiet, reliable power. The Marquis Gold is one of ON's finest, most efficient and quietest RV generators yet. That's good for you, your neighbors and the environment.

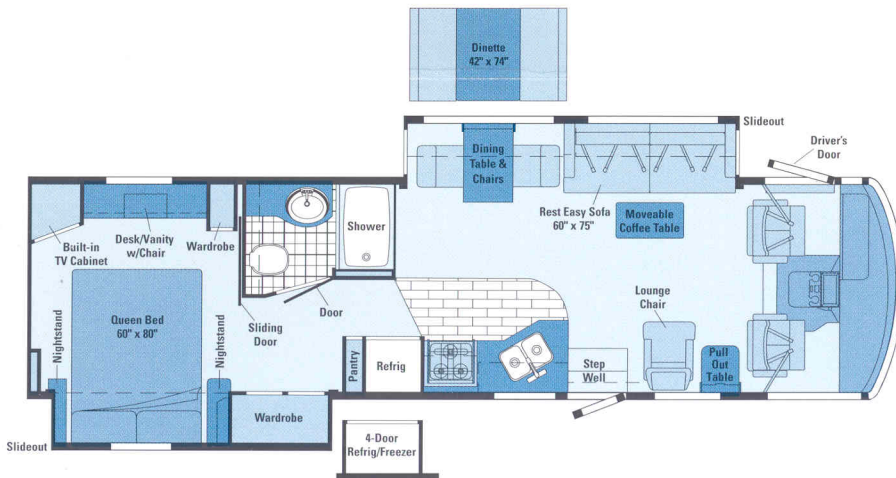
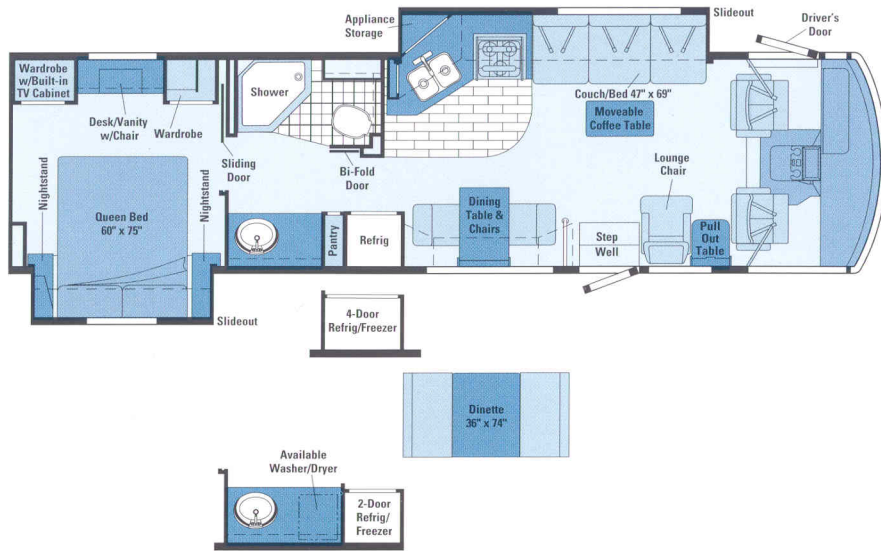


E X T E R I O R S D E S I G N E D F O R T R A V E L



WINNEBAGO CHIEFTAIN 2001 FLOORPLAN OPTIONS

CHIEFTAIN INTERIO



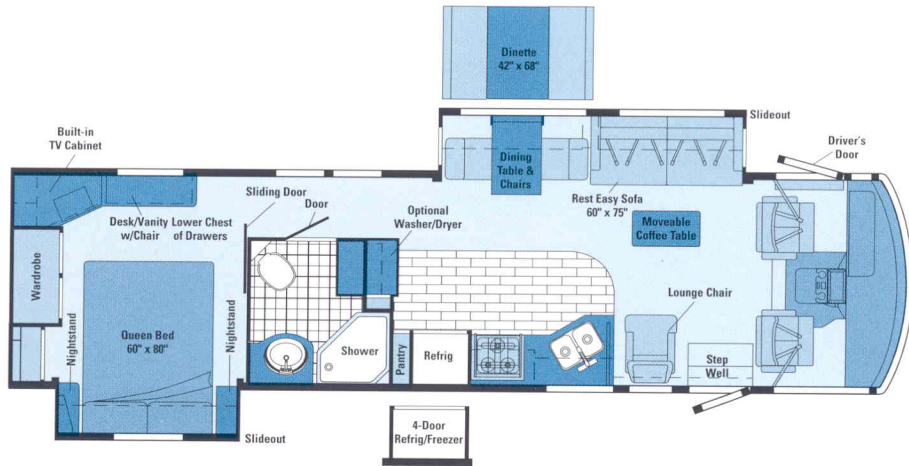
34Y

- **STOREMORE** angled galley/couch slideout
- Bedroom slideout
- Desk/vanity area with folding chair, dual wardrobes and built-in TV
- Walk-through bath with large vanity countertop

35U

- **STOREMORE** dining table/sofa slideout with flat floor design
- Bed/wardrobe slideout
- Desk/vanity area with folding chair and built-in TV
-  Multi-position lounge





Note: Dimensions shown are for sleeping space only and dashed lines denote overhead storage areas.

36W

- **STOREMORE** dining table/sofa slideout with flat floor design
- Bedroom slideout
- Large desk/vanity area with folding chair, chest of drawers, tip-out hamper and built-in TV
-  Multi-position lounge

Salem Cherry Woodgrain

Portsmouth Oak Woodgrain

WINNEBAGO CHIEFTAIN 2001 SPECIFICATIONS

	34Y	35U	36W
Length	34'11"	35'6"	36'4"
Exterior Height*	11'5"	11'7"	11'8"
Exterior Width ^Δ	8'5.5"	8'5.5"	8'5.5"
Exterior Storage	70 cu. ft.	72 cu. ft.	68 cu. ft.
Interior Height	6'8"	6'8"	6'8"
Interior Width	8'0.5"	8'0.5"	8'0.5"
Fresh Water Capacity w/Heater	90 gal.	90 gal.	90 gal.
Holding Tank Capacity - Black/Gray	58/67 gal.	40/54 gal.	45/67 gal.
LP Capacity [◇]	28 gal.	28 gal.	28 gal.
Fuel Capacity	75 gal.	75 gal.	75 gal.
GVWR	20,500 lbs.	20,500 lbs.	20,500 lbs.
Wheelbase	216"	228"	228"

Standard - S Optional - O

AUTOMOTIVE/CHASSIS

	34Y	35U	36W
Chassis - Ford 6.8L 50HC Triton V-10 @ 310 hp, 130-amp alternator, 4-wheel anti-lock brake system, 4-speed overdrive transmission, Hydraulic Leveling Jacks , Spare Tire , Stainless Steel Wheel Liners , Tire Tools wrench & leverage bar, Trailer Hitch 5000# drawbar/350# maximum vertical tongue weight & wiring	S	S	S

CAB AREA & DRIVER CONVENIENCES

	34Y	35U	36W
Cab Seats w/Seat Belts 3-point shoulder w/adjustable D-loop & lap w/retractors, armrests, manual lumbar support (driver seat), multi-adjustable slide/recline, fabric covered, Cigarette Lighter/12-Volt Electrical Supply , Convenience Tray , Cruise Control , Defroster Fans (2) auxiliary 2-speed, Driver Entrance Door w/power window, Electronic Compass w/Outdoor Thermometer Module , Hood Release exterior key locks, Intermittent Windshield Wipers , Light Filtering Shades cab windows, Map Light , Power Assist Steering w/Tilt Wheel , Rearview Monitor System w/single camera & 1-way audio, Sony® , Rubber Driver & Passenger Floor Mats , Seat Pedestal swivel/slide, Sunvisors (2) , Trim Panel driver door w/beverage holder, Wall Shelf passenger side w/beverage holder, Window (Passenger) full slider w/screen	S	S	S
Cab Seats leather insert w/vinyl surround	O	O	O
Cab Seat Pedestal* 6-way power assist, driver & passenger seats	O	O	O
Cab Seat Pedestal 6-way power assist, driver seat	O	O	O
Cab Seat (Passenger) w/Footrest*	O	O	O
Pull-out Workstation passenger side	O	O	O

ENTERTAINMENT

	34Y	35U	36W
19" AC Color TV w/remote, bedroom, 25" AC Color TV (Front) w/remote, CB Prep includes: antenna, antenna lead, 12-volt power supply, amplifier, speakers (6), stereo TV, stereo VCR, Exterior Entertainment Center w/Cassette DC receptacle, AC duplex receptacle, AM/FM radio, TV jack, radio antenna, speakers (2), table, lockable compartment, Radio (Cab) AM/FM stereo cassette, Sony, roof-mounted flexible rubber antenna, speakers, Radio Power Switch main/auxiliary battery, Satellite System Ready , TV Enhancement Package cable input, coax wiring & interior antenna jacks, exterior antenna jack, antenna check reminder light, VCR w/Remote , Video Selection System	S	S	S
19" AC Color TV* w/remote & video selection system, dinette	O		

	34Y	35U	36W
Appliance Storage Cabinet	S		
Coffeemaker	O	O	O
Counter Flip-up Extension		S	
Glass Partition forward end of galley countertop	S		S
Halogen Lights			S
Range 3-burner w/large oven, glass door, sealed burners, Magic Chef	O	O	O
Refrigerator/Freezer* 4-door w/icemaker, Norcold	O	O	O
Spice Rack	S		
Utility Tray tip-out	S		

BATH

	34Y	35U	36W
Hair Dryer wall-mounted w/night-light, Lavatory Cabinet , Makeup Lights , Medicine Cabinet , Oval Sink , Porcelain Toilet w/foot pedal flush & sprayer, Power Roof Vent , Shower , Shower Door textured glass, Shower Light , Single-control Lavatory Faucet , Single-control Shower Faucet w/fixed showerhead, Skylight , Tissue Holder , Wall Mirror w/beveled edge	S	S	S
3-Rod Towel Rack mounted to door		S	S
Magazine Rack	S	S	
Removable Clothes Rod shower		S	
Shower Package hand-held showerhead, fold-down shower seat	O	O	O
Towel Bar		S	
Towel Ring(s)	S		S

BEDROOM

	34Y	35U	36W
Bedspread , Pillow Shams , Throw Pillow , DC Receptacles (2) , Decorative Wall Lamps (2) , Innerspring Mattress (Serta®) access to storage below, Vanity Cabinet tip-up mirror, folding chair, Wall Border	S	S	S
Backwall Mirror	S	S	
Hamper tip-out		S	S

EXTERIOR

	34Y	35U	36W
AC Duplex Receptacle , Awning* patio, Awning Rails w/rain gutter, Double-door Step electric w/door jamb switch, Entrance Door main	S	S	S

Compact Multi-disc Changer Sony, 10-disc changer w/remote	0	0	0
Exterior Entertainment Center w/CD Player DC receptacle, AC duplex receptacle, AM/FM radio, TV jack, radio antenna, speakers (2), table, lockable compartment			
Radio (Cab) AM/FM stereo CD, Sony	0	0	0
Satellite Dish Antenna RV digital, digital elevation sensing unit	0	0	0
Sound System Deluxe w/Q® Surround 25" AC stereo color TV, stereo VCR, amplifier, cube speakers (5), subwoofers (2)	0	0	0
Stereo System (Bedroom)* AM/FM cassette, alarm clock	0	0	0
Stereo System (Bedroom)* CD player, alarm clock	0	0	0

INTERIOR

Accessory Package rechargeable flashlight, rechargeable vacuum cleaner,	\$	\$	\$
Ceiling Lights fluorescent lights, recessed, galley & lounge areas, Ceiling Lights incandescent, Cupholder(s) , Day/Night Pleated Shades , Decorative Clock , Decorative Dining Light , Front Wraparound Pleated Shade w/Wands , Reading Lights , Stepwell Light w/Interior Switch , Textured Fabric Ceiling , Wall Switches all ceiling lights, Wardrobe Cabinet (bedroom area) carpeted floor, clothes rod, light, shelf (34Y, 36W)			
Decorative Picture	\$		\$
Decorative Wall Lamp lounge area	\$	\$	
Dual-Glazed/Thermo-Insulated Windows	0	0	0

CABINETY

Portsmouth Oak or Salem Cherry Woodgrain stile-and-rail construction raised panel inserts	\$	\$	\$
--	----	----	----

COUNTERTOPS

Solid Surface Countertops galley, bath & bedroom vanity, Laminate w/solid wood edging, lounge table, dinette booth & bedroom nightstand	\$	\$	\$
---	----	----	----

FLOORCOVERING

Carpeting w/Pad , Vinyl Floorcovering bath, Vinyl Plank Floorcovering galley	\$	\$	\$
---	----	----	----

FURNITURE

Coffee Table, Dining Table & Chairs folding chairs (2), free-standing chairs (2)	\$	\$	\$
Couch w/throw pillows	\$		
Couch leather w/throw pillows	0		
Dinette access to storage below seats, slideout drawers	0	0	0
Lounge Chair hoop-base, leather	0	0	0
Lounge Chair hoop-base			\$
Lounge Chair hoop-base & cabinet w/table	\$	\$	
Rest Easy™ Sofa 4-way, sleeper/recliner/lounge, leather		0	0
Rest Easy Sofa 4-way, sleeper/recliner/lounge		\$	\$

GALLEY

Decorative Wall Border , Double Stainless Steel Sink sink covers (countertop material), Fluorescent Under Cabinet Light , Microwave/Convection Oven w/Range Fan residential 30"; Sharp® Pantry* slideout, Powered Ventilator Fan , Range Cover flush-mounted (countertop material), Range Top 3-burner w/storage below, recessed, sealed burners, Magic Chef® Refrigerator/Freezer large double-door w/icemaker, Norcold® Single-control Faucet , Wastepaper Basket , Water Purification System Everpure®	\$	\$	\$
---	----	----	----

w/Screen Door, w/Screen Key System, w/Storage Or Jadestone Metal recommended w/Aspen Glen & Cottage Blue, Ladder , Locking Fuel-fill Door , Mirrors low-mount, electric remote w/defrost, Porch Light w/interior switch, Rear Mudflaps , Service Light driver side, Sidewall Skin 1-piece fiberglass, smooth, high-gloss, Storage Compartments trunk liner, gas cylinders, common key system, single-paddle latch, lights, Under Hood Light			
Awning* patio electric		0	0

SYSTEMS

1" Water Tank Drain , 10-Gallon Electronic Ignition Water Heater w/Motoraid, 10-Watt Solar Panel/Battery Charger , 12-Volt Auxiliary Receptacle , 30-Amp Power Cord , AC/DC Electrical Distribution System AC & DC breaker panels, 55-amp converter/charger (45 amp 34Y), Accumulator Tank , Automatic Dual Battery Charge Control , Automotive Heater/Air Conditioner , Auxiliary Start Circuit , Coach Batteries* (2) deep cycle, Coach Battery Disconnect System , Exterior Wash Station , Furnace 40,000 BTU, Suburban® low profile, Generator 5,500 watt, Onan® Marquis Gold™ gas, Generator Prep Kit , Heated Holding Tank Compartment , Holding Tank Flushing System black tank only, Inverter* DC/AC, 300 watt, LP Tank permanent mount w/gauge, ONEPLACE™ systems Center wall mount, battery digital voltmeter, PowerLine energy management display, generator hourmeter gauge, generator start/stop switch, holding tank levels, LP tank level, solar panel/battery charger light, water heater switch, water heater on light & pilot indicator light, water pump switch, water tank level, POWERLINE™ Energy Management System , Service Center (Electrical/Water) cable TV input, city water hookup/tank diverter fill, drainage valves, exterior wash station w/pump switch, power cord, sewer hose, telephone input, Shoreline/Generator Automatic Changeover Switch , Telephone Input & Interior Jacks (2) , TRUEAIR™ Central Air Conditioning System , Water Heater Winterization Bypass Valve , Water Pump demand, Water System Winterizing Valve , Water Tank Fill pressurized city hookup w/diverter valve	\$	\$	\$
---	----	----	----

50-Amp Power Cord	0	0	0
Generator 7,000 watt, Onan Marquis Gold, gas	0	0	0
Home Comfort Plus Package central air heat pump, auxiliary automotive heater, insulated power ventilator fans (bath & galley)	0	0	0
Washer/Dryer Combination*	0		0
Washer/Dryer Prep			\$
Water System Winterizing Kit , Automatic	0	0	0
Water Tank Fill w/Locking Door		\$	\$

SLIDEOUT

Slideout Room (couch/galley 34Y & sofa/dining table 35U, 36W) flat-floor slideout 35U & 36W, slideroom cover (slideout section), STORAMORE™ , Slideout Room (bed 34Y, 36W & bed/wardrobe 35U)	\$	\$	\$
--	----	----	----

SAFETY

3-Point Cab Seat Belts , 10 B.C. Fire Extinguisher , Acrylic Exterior Assist Handle , Bumpers front & rear, Carbon Monoxide Detector/Alarm , Center High-mount Stop Lamp , Courtesy Light(s) w/Wall Switch(es), Daytime Running Lamps , Escape Window , Ground Fault Interrupter , Interior Assist Bar , LPG Leak Detector/Alarm , Laminated Safety Glass Windshield , Lap Belts In Selected Areas , Smoke Detector/Alarm	\$	\$	\$
--	----	----	----

WARRANTY

12-Month/15,000-Mile Basic Warranty , 36-Month/36,000-Mile Warranty On Structure , ** 10-Year Limited Parts & Labor Warranty On Roof	\$	\$	\$
---	----	----	----

• The height of each model is based on the curb weight of a typically equipped unit on the standard chassis. The actual height of your vehicle may vary by as much as 2" depending on chassis or equipment variations.
 Δ Chieftain floorplans feature a widebody design — over 96". In making your purchase decision, you should be aware that some states restrict access on some or all state roads to 96" in body width. Before making your purchase decision, you should confirm the road usage laws in the states of interest to you. *Not all items available in combination. See dealer for details.
 ◇ Capacities shown are tank manufacturer's listed water capacity (W.C.). Actual filled LP capacity is 80% of listing due to overflowing prevention device on tank. ** See your dealer for complete warranty documentation information.
 Winnebago Industries' continuing program of product improvement makes specifications, equipment, model availability and prices subject to change without notice. Comparisons to other motor homes are based on the most recent information available.

NOT ALL MOTOR HOMES ARE EQUAL.

When you purchase a Winnebago Chieftain you benefit from unique advantages, beginning with one of the most comprehensive warranty programs in the industry. It includes a 12-month/15,000-mile basic protection plan, 36-month/36,000-mile warranty on the structure and a standard 10-year limited parts and labor warranty on the roof.



Mechanical emergency while on vacation? Go to your nearest Winnebago Industries dealer. TripSaver guarantees that qualifying, in-stock emergency warranty repair parts will be air-shipped from our factory within 24 hours. Plus, every new purchase comes with a one-year membership in our Premium Roadside Assistance Program, a 24-hour nationwide plan that covers road emergencies with free services like jump starts, tire changes, fuel delivery and lockout assistance.



In addition, Winnebago Industries vehicle owners are eligible to enroll in the Winnebago-Itasca Travelers (WIT) Club. As a member, you'll enjoy many benefits, including mail forwarding, trip planning, rallies, caravans and more.



To learn more about what separates our motor homes from others, ask for this free guide next time you visit your Winnebago Industries dealer. It explains our superior manufacturing process. Use it to learn more about important safety and quality considerations as you shop for the motor home that's best for you.



QUALITY FROM THE GROUND UP.

FROM A SOLID SUPERSTRUCTURE™...

We start with a sturdy steel and extruded aluminum substructure, using interlocking joint construction to join the sturdy floor, roof and sidewalls into one solid unit. Sidewalls and backwalls use our patented Thermo-Panel® construction process, with pressure-bond exterior skin, lauan backing and block-foam insulation. Select appliances are solidly secured into embedded steel plates.

Built to last, key steel components are subjected to a 12-stage rustproofing process that cleans, preps, and electrostatically coats components inside and out. With a focus on quality, each new vehicle carries a structural warranty of 3 years or 36,000 miles.



SUPER STRUCTURE

...TO A MORE DURABLE ROOF

Unlike rubber roofs, our crowned one-piece seamless fiberglass Thermo-Panel® roof minimizes tearing and snagging. It also resists fading, chalking and deterioration, and expansion/contraction is minimal compared to rubber roofs.

In fact, our roof is so durable, it's backed by a 10-year limited warranty for parts and labor.



Visit us at www.winnebagoind.com
Seat belts are your most important hookup. Always buckle up.