

Adventurer

2001 WINNEBAGO





Adventurer 35U - Arbor
 Relax on the couch or hoop-base lounge chair, prepare a meal in the well-equipped galley or enjoy a snack in the dining area. The Adventurer's quality Stitchcraft furniture, solid surface galley countertop, available deluxe sound system and space-widening StoreMore® Hydraulic Slideout System with large, overhead storage cabinets are arranged with your convenience in mind. Ceiling-ducted TrueAir™ air conditioning and available dual-glazed, thermo-insulated windows keep you comfortable.

**IT TAKES A LOT OF RESEARCH
 TO CREATE THIS KIND OF COMFORT.**

The Adventurer is the most intensively researched vehicle Winnebago Industries has ever produced. Years of on-the-road experience and thoughtful improvements for 2001 have created an ideal fusion of features and design. Everything you need for enjoyable driving and living is close at hand and easy to use. You'll find amenities like TrueAir™ residential central air conditioning, a quieter Onan® Marquis Gold™ generator, Magic Chef® sealed three-burner range, improved lighting locations, larger electric remote-control mirrors, exterior entertainment center, solar panel battery charger, water purifier and much more.



Adventurer 35U - Arbor The bedroom slideout offers abundant living and storage space, mirrored wardrobe and changing area. Most important, you'll enjoy a good night's sleep on the walk-around queen-size bed with Serta® innerspring mattress.



Rest Easy™ Multi-Position Lounge (Available -32V)

It's one of the most comfortable loungers you'll find in a motor home. It starts as a comfy couch. At the touch of a button, Rest Easy becomes a relaxing recliner with a pull-out ottoman. Touch the button again and it's a contoured 60" x 75" bed.



Galley (35U)

The fully equipped galley provides ample countertop space. Standard features include stainless steel, recessed double sink with single-control faucet; microwave; refrigerator/freezer; Magic Chef® three-burner range and solid surface countertops.



Cabinet Pulls

Large 4-inch cabinet pulls make it easier to open doors and drawers.



Refrigerator/Pantry

A large, double-door Norcold® refrigerator is standard. A built-in icemaker is also available. The slideout pantry with adjustable shelves provides generous and easily accessible space for food and sundries.



Dining Table and Chairs (35U)

The available dining table and chairs provides a more home-like setting and comes with two free-standing chairs and two storable folding chairs.



Desk/Vanity (35U)

The bedroom desk/vanity area includes a folding storable chair, a large countertop, an additional phone/modem jack and plenty of storage space with drawers and a tip-out clothes hamper.



Bedroom TV (35U)

A built-in 19-inch color TV is conveniently positioned for bedtime viewing.



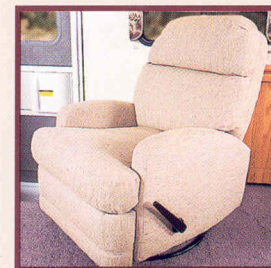
Washer/Dryer (35B & 37G)

The available washer and dryer combo lets you wash clothes whenever you want.



Bathroom (35U)

Bathroom amenities include ample storage space; vanity mirror; new foot-pedal flush, residential-height toilet; available fold-down shower seat (NA on the 37G) and a flexible handheld shower faucet.



Hoop-Base Chair

A Winnebago exclusive, the hoop-base lounge chair rocks, reclines (with foot rest) and while the motor home is parked it can be moved wherever you need a comfortable place to sit.

At Winnebago Industries, we understand how each feature and option must work in harmony with the entire vehicle. So nothing is just tacked on as an afterthought. We design the entire package from start to finish. It's our philosophy that overall product performance improves only when quality parts work together to truly enhance your RV experience.

This philosophy holds especially true in the Adventurer. Designed as a road-worthy vehicle and a comfortable home, this Class A motor home is a product of our ongoing lifestyle and ergonomic research. Once you drive it, walk around inside and live in it, we think you'll agree—the Adventurer is our most user-friendly RV ever.



Ergonomic Cab Area Design

Adventurer's well-appointed cab area features controls that are clearly labeled and easy to reach. A low-profile engine cover makes it easy to get in and out of the cab seats.

Digital Compass

Stay headed in the right direction with the Adventurer's easy-to-read, dash-mounted compass and outside temperature gauge.



Drivers Door

Easy in, easy out. The smooth-operating driver-side door with full-length assist handle makes entry and exit more convenient.



Rear Monitor

When towing or backing up, the conveniently located rear monitor helps provide a clear picture of what's behind the vehicle.



Beverage Tray

The beverage tray features large cup-holders and slideout map storage.



KeyOne™

No more fumbling with numerous keys. One key opens most doors and storage compartments on your Adventurer.



Workstation

The newly designed, available pull-out, passenger-side workstation is great for laptop computing, writing letters or doing craft projects.



Leather Cab Seat

The driver's seat comes standard with high-backed cloth seats and manual lumbar support. Or choose the available leather, and/or six-way power-assist for both driver and passenger seats.



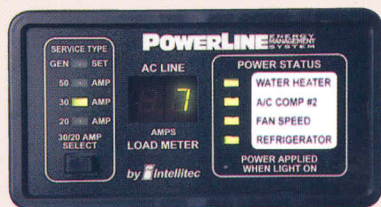
ONE PLACE
systems center

Check important levels and systems in one glance. The OnePlace™ Systems Center eliminates runaround by placing important and frequently checked switches, gauges and controls in one convenient location.



Deluxe Entertainment System

It's like taking a drive-in movie theater with you wherever you go. Only this way sounds better. With the available Deluxe Sound Mobile Theater System you'll always have the best seat in the house. The 25-inch stereo TV and VCR are included in this system.



POWERLINE ENERGY MANAGEMENT SYSTEM

The PowerLine™ Energy Management System lets you fully utilize your central air conditioning on a 30-amp shore-power circuit. By controlling the operation of the electric water heater, second compressor and refrigerator, PowerLine silently and automatically minimizes the nuisance of campground circuit breaker tripping. When on-demand appliances such as a toaster, coffeemaker or popcorn popper are operating, PowerLine manages the amount of current by temporarily turning off one or more of your vehicle's "postponable" appliances and then returning power once the load is reduced.



Satellite System

Select the available satellite dish and digital elevation sensor. Prewiring comes standard.



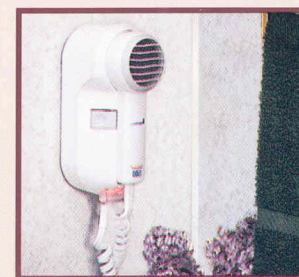
Custom Volume Control

The standard sound system features volume control knobs on the bottom of the overhead cabinets, which allows easy control of individual speaker volume.



Interior and Exterior Entry Assist Handles

Whether you are setting up at a campground or making a quick stop at a convenience store, the easy-to-grab assist handles help you get in and out with confidence.



Convenient Accessories

Accessory packages such as the standard wall-mounted hair dryer in the bath and available rechargeable cordless flashlight and vacuum combo make your travels even more convenient.



EXTERIOR FEATURES FOR EASY TRAVEL

At Winnebago Industries, we believe a motor home should be easy to operate whether you are on the inside or the outside. Walk around the Adventurer and you'll see that each feature is designed with your safety and convenience in mind.

SUPER STRUCTURE

Our exclusive SuperStructure™ design provides strength and durability.

- The entire cab structure is constructed with steel for added strength and support. (Some companies use wood in their cab construction.)
- Structural steel components are electroplated to resist rust and corrosion.
- Our unique interlocking joint design transfers the weight of the sidewalls and roof onto the metal substructure for optimal strength.



Exterior Mirrors

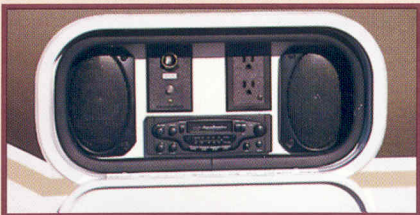
New mirrors offer a 58 percent larger view and repositioned mountings for added convenience.



STOREMORE

StoreMore® Hydraulic Slideout System

Extend your living space, then unload. Lighted exterior front slideout compartments extend with the slideout room to make loading and unloading easier anytime. Compartment doors feature long-lasting, gas-struts that give you easier access.



Exterior Entertainment Center

The exterior entertainment center includes an AM/FM stereo with antenna, cassette or available CD player, 12-volt DC receptacle, TV jack, 110-volt outlet and speakers in a lockable compartment. Listen to the news or music, or watch the big game while you enjoy the great outdoors.



Dual-Glazed Windows

Versatile and functional, our available dual-glazed, thermo-insulated windows are engineered to handle the elements.

STOREMORE

Storage compartments slide out with the room for easy access to needed space.



Valance Panels and Doors

Adventurer's valance panels and doors provide a clean look, reduce wind noise and provide easy access to basement storage.

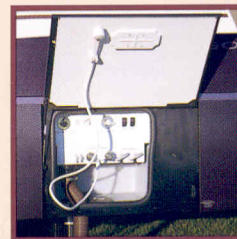
Awning

Easy to extend, the standard awning features a rain gutter built into the awning rail to help prevent water from pooling.



TrueAir residential central air conditioning is located below the floor so water runoff is no longer a problem, and the coach has a lower profile for better clearance. In addition, TrueAir is quieter, more efficient and easier to service. Air distribution is enhanced and residential air filters do a better job of removing air impurities.

On cool days the available TrueAir heat pump can operate the air conditioning system as a heating unit to keep you cozy inside and save on LP fuel.



Exterior Wash Station

Muddy boots? Messy grill? Clean up outside and keep your interior living space clean with the convenient exterior wash station.

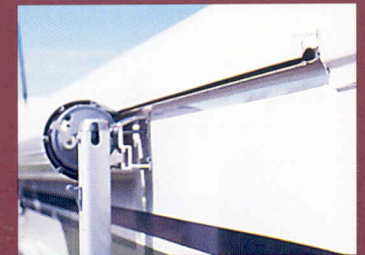
New Onan® Marquis Gold™ Generator

So quiet, you might forget you're not plugged in at a campground. The 5,500 and available 7,000-watt Marquis Gold generators are quiet and efficient. That's good for you, your neighbors and the environment.



Awning Rail

Have your picnic, rain or shine. An innovative awning rail with a built-in gutter helps keep things dry by channeling water to the front and rear of the coach.



WINNEBAGO ADVENTURER 2001

ADVENTURER EXTERIORS

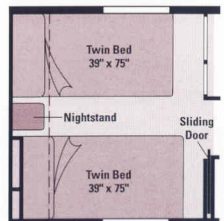
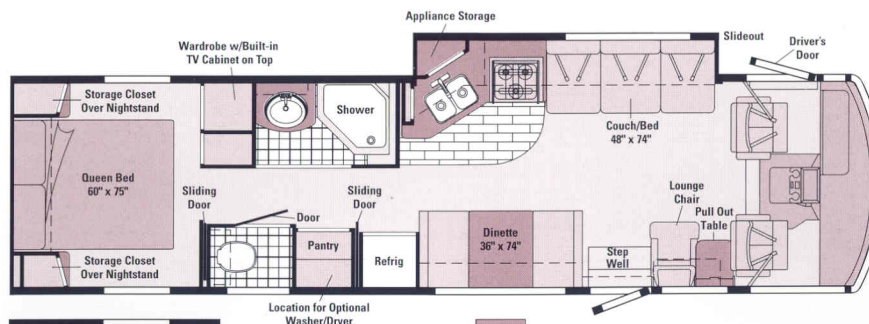
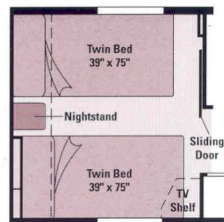


Lavender Frost Metallic



Sahara Metallic

The 2001 exterior paint colors are Lavender Frost Metallic, suggested with Arbor; and Sahara Metallic suggested with Calypso and Midnight Sun. However, you may order either exterior color, regardless of your interior choice.



32V

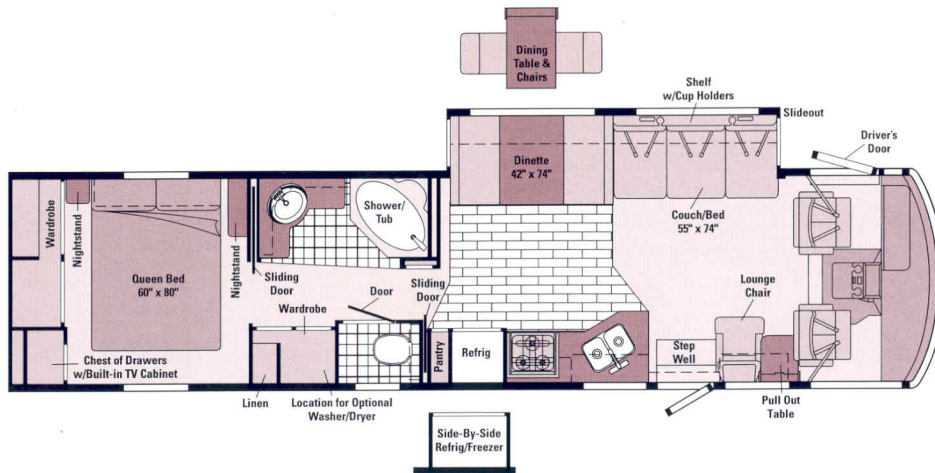
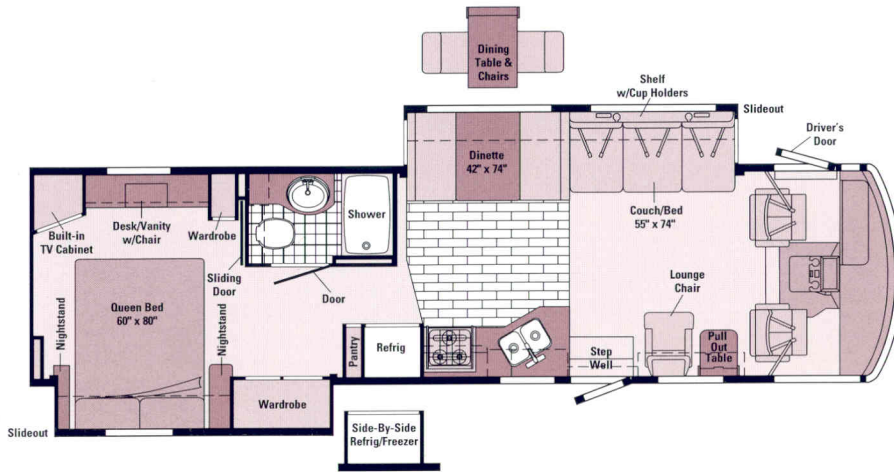
- **STOREMORE** Hydraulic Slideout System
- Large wardrobe for ample storage
- Queen or twin bed option
- **REST EASY** Multi-Position Lounge

35B

- **STOREMORE** Hydraulic Slideout System
- Angled galley/couch slideout floorplan
- Split bath with private toilet area
- Bedroom wardrobe with built-in TV cabinet

FLOORPLAN OPTIONS

ADVENTURER INTERIORS



Note: Dimensions shown are for sleeping space only and dashed lines denote overhead storage areas.



Portsmouth Oak Woodgrain



WINNEBAGO ADVENTURER 2001 SPECIFICATIONS

	32V	35B	35U	37G
Length	32'11"	34'11"	34'11"	37'5"
Exterior Height*	11'9"/11'7"	11'8"/NA	11'8"/NA	11'9"/NA
Exterior Width ^Δ	8'5.5"	8'5.5"	8'5.5"	8'5.5"
Exterior Storage	76 cu. ft.	73 cu. ft.	88 cu. ft.	97 cu. ft.
Interior Height	6'8"	6'8"	6'8"	6'8"
Interior Width	8'5"	8'5"	8'5"	8'5"
Fresh Water Capacity w/Heater* - Ford/Workhorse [®]	90/70 gal.	90 gal./NA	90 gal./NA	90 gal./NA
Holding Tank Capacity - Black/Gray	40/45 gal.	60/54 gal.	40/54 gal.	53/55 gal.
LP Capacity [◇]	28 gal.	28 gal.	28 gal.	28 gal.
Fuel Capacity	75 gal.	75 gal.	75 gal.	75 gal.
GVWR - Ford/Workhorse	20,500/18,000 lbs.	20,500/NA lbs.	20,500/NA lbs.	20,500/NA lbs.
Wheelbase - Ford/Workhorse	208"/200"	228"/NA	228"/NA	248"/NA

Standard - S Optional - O

	32V	35B	35U	37G
AUTOMOTIVE/CHASSIS				
Chassis - Ford 6.8L Triton V-10 @ 310 hp, 130-amp alternator, 4-speed overdrive transmission	O	S	S	S
Chassis - Workhorse 7.4L Vortec V-8 @ 290 hp, 124-amp alternator, anti-lock brake system, 4-speed overdrive transmission	S			
Chassis - Workhorse [™] 8.1L Vortec V-8 @ 340 hp, 130-amp alternator, anti-lock brake system, 4-speed overdrive transmission	S			
Hydraulic Leveling Jacks, Spare Tire, Stainless Steel Wheel Liners, Tire Tools wrench & leverage bar, Trailer Hitch 5000# drawbar/350# maximum vertical tongue weight & wiring	S	S	S	S
Front Shocks/Stabilizer Package Workhorse	O			
CAB AREA & DRIVER CONVENIENCES				
Cab Seats w/Seat Belts 3-point shoulder w/adjustable D-loop & lap w/retractors, armrests, fixed lumbar support passenger seat, manual adjust lumbar support driver seat, multi-adjustable swivel/slide/recline, fabric covered, Carpeted Driver & Passenger Floor Mats, Cigarette Lighter/12 Volt Electrical Supply, Convenience Tray, Cruise Control, Driver Entrance Door, Electronic Compass w/Outdoor Thermometer Module, Hood Release, Intermittent Windshield Wipers, Light Filtering Shades cab windows, Map Light, Power Assist Steering w/Tilt Wheel, Sunvisors (2), Wall Shelf passenger, 12-volt receptacle, Window (Driver) manual roll-down, Window (Passenger) full slider w/screen	S	S	S	S
Cab Seat Pedestal 6-way power assist, driver & passenger	O	O	O	O
Cab Seat Pedestal 6-way power assist, driver	O	O	O	O
Cab Seats leather insert w/vinyl surround	O	O	O	O
Defroster Fans (2) auxiliary 2-speed	O	O	O	O
Pull-out Workstation passenger side	O	O	O	O
Rearview Monitor System w/single camera & 1-way audio, Sony [®]	O	O	O	O

ENTERTAINMENT

25" AC Color TV (Front), CB Prep (includes: antenna, antenna lead, 12-volt power supply), Exterior Entertainment Center w/Cassette DC receptacle, AC duplex receptacle, AM/FM radio, TV jack, radio antenna, exterior antenna jack, speakers (2), lockable compartment, Radio (Cab) AM/FM stereo cassette, roof-mounted flexible rubber antenna, speakers (4), Radio Power Switch main/auxiliary battery, Satellite System Ready, TV Enhancement Package cable input, coax wiring & interior antenna jacks, antenna reminder light, telephone input & interior jack(s), Video Selection System	S	S	S	S
--	---	---	---	---

	32V	35B	35U	37G
13" 12-Volt Color TV w/remote, bedroom	S	S		
19" AC Color TV w/remote, bedroom			S	S
19" AC Color TV w/remote, video selection system, dinette		O		
Compact Multi-disc Changer Sony	O	O	O	O
Sound System Deluxe w/Q [®] Surround* 25" AC stereo color TV, stereo VCR, amplifier, speakers (5), subwoofers (2)	O	O	O	O
Exterior Entertainment Center w/CD Player DC receptacle, AC duplex receptacle, AM/FM radio, TV jack, radio antenna, exterior antenna jack, speakers (2), lockable compartment	O	O	O	O
Exterior Entertainment Center Table	O	O	O	O
Radio (Cab) AM/FM stereo CD, Sony	O	O	O	O
Satellite Dish Antenna RV digital, digital elevation sensing unit	O	O	O	O
VCR w/Remote*	O	O	O	O

INTERIOR

Ceiling Lights fluorescent lights, recessed, galley, lounge w/wall switches, Ceiling Lights incandescent w/wall switches, Cupholder, Day/Night Pleated Shades, Decorative Clock, Front Wraparound Pleated Shade w/Wands, Stepwell Light w/Interior Switch, Textured Fabric Ceiling, Wardrobe Cabinet carpeted floor, clothes rod, drawers (32V), light, shelf (NA 32V)	S	S	S	S
Accessory Package rechargeable flashlight, rechargeable vacuum cleaner	O	O	O	O
Decorative Picture	S	S		
Decorative Wall Lamp	S	S	S	
Dual-Glazed, Thermo-Insulated Windows	O	O	O	O

CABINetry

Portsmouth Oak Woodgrain stile-and-rail construction raised panel inserts	S	S	S	S
---	---	---	---	---

COUNTERTOPS

Solid Surface Countertops galley, Laminate w/wood-look T-mold edging, bath & bedroom (dinette with solid wood edging)	S	S	S	S
---	---	---	---	---

WINNEBAGO ADVENTURER 2001 SPECIFICATIONS

Standard - S Optional - O

32V 35B 35U 37G

FLOORCOVERING

Carpeting w/Pad, Vinyl Floorcovering bath, Woodgrain Vinyl Plank Floorcovering galley	S	S	S	S
---	---	---	---	---

FURNITURE

Dinette drawer storage below seats, Lounge Chair (hoop base)	S	S	S	S
Couch w/2 throw pillows		S	S	S
Couch leather w/2 throw pillows		O	O	O
Rest Easy™ Sofa 4-way, sleeper/recliner/lounge, powered, w/2 throw pillows	S			
Rest Easy Sofa 4-way, sleeper/recliner/lounge, powered, leather, w/2 throw pillows	O			
Dining Table & Chairs folding chairs (2), free-standing chairs (2)	O	O	O	O
Lounge Chair (Hoop Base) leather	O	O	O	O

GALLEY

Coffeemaker, Decorative Wall Border, Double Stainless Steel Sink sink covers (countertop material), Fluorescent Under Cabinet Light, Microwave Oven w/Range Fan residential 30", Pantry, Powered Ventilator Fan, Range 3-burner w/large oven, glass door, recessed, sealed burners, Magic Chef*, Range Cover, Refrigerator/Freezer large double-door, Norcold*, Single-control Faucet, Wastepaper Basket, Water Purification System	S	S	S	S
Appliance Storage Cabinet		S		
Counter Flip-up Extension	S		S	S
Glass Partition end of galley		S		
Microwave/Convection Oven w/Range Fan* residential 30"	O	O	O	O
Range Top 3-burner w/storage below, recessed, sealed burners, Magic Chef	O	O	O	O
Refrigerator/Freezer large double-door w/ice maker, Norcold	O	O	O	O
Refrigerator/Freezer side-by-side w/ice maker, Dometic™			O	O
Spice Rack		S		

BATH

3-Rod Towel Rack mounted to door, Hair Dryer, Lavatory Cabinet, Makeup Lights, Medicine Cabinet, Oval Sink, Porcelain Toilet w/Foot-Pedal Flush, Power Roof Vent, Single-control Lavatory Faucet, Single-control Shower Faucet w/Fixed Shower Head, Shower Light, Skylight, Tissue Holder	S	S	S	S
Magazine Rack	S		S	S
Robe Hook		S		
Shower	S	S	S	
Shower/Tub				S
Shower Door folding	S		S	
Shower Door textured glass		S		S
Shower Head handheld				O
Shower Package handheld shower head, fold-down shower seat	O	O	O	
Towel Bar		S	S	S
Towel Ring(s)	S	S	S	S
Wall Mirror(s)	S	S	S	S

BEDROOM

Bedspread, DC Receptacle(s), Decorative Wall Border, Decorative Wall Lamps, Innerspring Mattress Serta®, access to storage below, Pillow Shams, Reading Lights, Throw Pillow	S	S	S	S
Fabric Headboard	S	S		
Hamper			S	
Twin Beds	O	O		
Vanity Cabinet w/fold-up countertop, folding chair			S	
Wall Mirror backwall	S	S	S	

32V 35B 35U 37G

EXTERIOR

AC Duplex Receptacle, Awning* patio, Awning Rails w/rain gutter, Double-door Step electric w/door jamb switch, Entrance Door main w/screen door, deadbolt lock, Graphics Package Lavender Frost Metallic recommended w/Arbor Or Sahara Metallic recommended w/Calypto & Midnight Sun, Ladder, Locking Fuel-fill Door, Mirrors low mount, electric remote w/defrost, Porch Light w/interior switch, Rear Mudflaps, Service Light driver side, Sidewall Skin 1-piece fiberglass, smooth, high gloss, Storage Compartments smooth valance panels, trunk liner, gas cylinders, common key w/entrance doors, single paddle latch	S	S	S	S
Electric Awning* Patio (available September 2000)	O	O	O	O
Undercoating (Workhorse® Chassis only)	O			

SYSTEMS

1" Water Tank Drain, 10 Gallon Electronic Ignition LP Gas/110 VAC Motoraid Water Heater, 10-Watt Solar Panel/Battery Charger, 30-Amp Power Cord, AC/DC Electrical Distribution System AC & DC breaker panels, 45-amp converter/charger, Automatic Dual Battery Charge Control, Automotive Heater/Air Conditioner, Auxiliary Start Circuit, Coach Batteries 2 deep cycle, Coach Battery Disconnect System, Exterior Wash Station, Generator 5,500 watt, Onan® Marquis Gold™ gas Heated Drainage System*, Heated Holding Tank Compartment, Holding Tank Flushing System black tank only, LP Tank permanent mount w/gauge, ONEPLACE™ Systems Center wall mount, battery digital voltmeter, PowerLine™ energy management display, generator hourmeter gauge, generator start/stop switch, holding tank levels, LP-tank level, solar panel/battery charger light, water heater switch, water heater on light & pilot indicator light, water pump switch, water tank level, heating/AC thermostat, POWERLINE™ Energy Management System, Service Center (Drainage/Water) city water hookup/tank diverter fill, drainage valves, exterior wash station w/pump switch, sewer hose, Service Center (Electrical) cable input, power cord, telephone input, Shoreline/Generator Automatic Changeover Switch, TRUEAIR™ Central Air Conditioning System, Water Heater Winterization Bypass Valve, Water Pump demand, Water System Winterizing Valve, Water Tank Fill pressurized city hookup w/diverter valve, Water Tank Fill w/Locking Door	S	S	S	S
50 Amp Power Cord	O	O	O	O
Auxiliary Automotive Heater*		O	O	O
Furnace 35,000 BTU, Suburban®, low profile		S		
Furnace 40,000 BTU, Suburban, low profile		S	S	S
Generator 7,000 watt, Onan® Marquis Gold™ gas	O	O	O	O
Home Comfort Plus Package central air heat pump, auxiliary automotive heater, insulated power ventilator fans (bath & galley)	O	O	O	O
Inverter DC/AC, 130 watt	O	O		
Inverter DC/AC, 300 watt			O	O
Washer/Dryer Prep		S		S
Washer/Dryer combination	O	O		

SLIDEOUT

Slideout Room (couch/dinette 32V, 35U, 37G & couch/galley 35B), slideroom cover (slideout section), Slide Room	S	S	S	S
Slideout Room (bed/wardrobe)			S	

SAFETY

3-Point Cab Seat Belts, 10 B.C. Fire Extinguisher, Acrylic Exterior Assist Handle w/Logo, Bumpers front & rear, Carbon Monoxide Detector/Alarm, Center High-Mount Stop Lamp, Courtesy Light(s) w/Wall Switch(es), Escape Window, Ground Fault Interrupter, Interior Assist Bar, LPG Leak Detector/Alarm, Laminated Safety Glass Windshield, Lap Belts In Selected Areas, Smoke Detector/Alarm, Daytime Running Lamps (Ford Chassis only)	S	S	S	S
Daytime Running Lamps (Ford Chassis only)	O	S	S	S

WARRANTY

12-Month/15,000-Mile Basic Warranty, 36-Month/36,000-Mile Warranty On Structure,** 10-Year Limited Parts & Labor Warranty On Roof	S	S	S	S
---	---	---	---	---

* The height of each model is based on the curb weight of a typically equipped unit on the standard chassis. The actual height of your vehicle may vary by as much as 2" depending on chassis or equipment variations.

Δ Adventurer floorplans feature a widebody design—over 96" in making your purchase decision, you should be aware that some states restrict access on some or all state roads to 96" in body width. Before making your purchase decision, you should confirm the road usage laws in the states of interest to you. *Not all items available in combination. See dealer for details. NA=Not Available.

∅ Capacities shown are tank manufacturer's listed water capacity (W.C.). Actual filled LP capacity is 80% of listing due to overfilling prevention device on tank. **See your dealer for complete warranty documentation information.

Winnebago Industries' continuing program of product improvement makes specifications, equipment, model availability and prices subject to change without notice. Comparisons to other motor homes are based on the most recent information available.

™ Replaces standard 7.4L engine mid-year 2001 model year.

Adventurer

NOT ALL MOTOR HOMES ARE EQUAL.

When you purchase a Winnebago Adventurer you benefit from unique advantages, beginning with one of the most comprehensive warranty programs in the industry. It includes a 12-month/15,000-mile basic protection plan, 36-month/36,000-mile warranty on the structure and a standard 10-year limited parts and labor warranty on the roof.

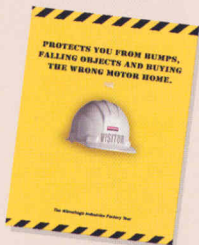


Mechanical emergency while on vacation? Go to your nearest Winnebago Industries dealer. TripSaver guarantees that qualifying, in-stock emergency warranty repair parts will be air-shipped from our factory within 24 hours. Plus, every new purchase comes with a one-year membership in our Premium Roadside Assistance Program, a 24-hour nationwide plan that covers road emergencies with free services like jump starts, tire changes, fuel delivery and lockout assistance.



In addition, Winnebago Industries vehicle owners are eligible to enroll in the Winnebago-Itasca Travelers (WIT) Club. As a member, you'll enjoy many benefits, including mail forwarding, trip planning, rallies, caravans and more.

To learn more about what separates our motor homes from others, ask for this free guide next time you visit your Winnebago Industries dealer. It explains our superior manufacturing process. Use it to learn more about important safety and quality considerations as you shop for the motor home that's best for you.



Visit us at www.winnebagoind.com
Seat belts are your most important hookup. Always buckle up.

© 2000 Winnebago Industries, Inc. Forest City, IA 50436. Printed in USA.

QUALITY FROM THE GROUND UP.

FROM A SOLID SUPERSTRUCTURE™ . . .

We start with a sturdy steel and extruded aluminum substructure, using interlocking joint construction to join the sturdy floor, roof and sidewalls into one solid unit. Sidewalls and backwalls use our patented Thermo-Panel® construction process, with pressure-bond exterior skin, lauan backing and block-foam insulation. Appliances are solidly secured into embedded steel plates.

Built to last, key steel components are subjected to a 12-stage rustproofing process that cleans, preps, and electrostatically coats components inside and out. With a focus on quality, each new vehicle carries a structural warranty of 3 years or 36,000 miles.



SUPER STRUCTURE

. . . TO A MORE DURABLE ROOF

Unlike rubber roofs, our crowned one-piece seamless fiberglass Thermo-Panel® roof minimizes tearing and snagging. It also resists fading, chalking and deterioration, and expansion/contraction is minimal compared to rubber roofs.

In fact, our roof is so durable, it's backed by a 10-year limited warranty for parts and labor.

