

**BRAVE**

2000 WINNEBAGO®



The motor home is fully loaded, not the price.

Traveling in comfort has never been easier, or more affordable, than in the new Winnebago Brave and Brave SE. Widebody designs create spacious living areas and ample space for your gear in the basement storage compartments. And every Brave comes equipped with an impressive list of standard features, including ducted roof air and a handy exterior wash station. Plus, many models offer the PowerLine™ Energy Management System. So on your next adventure, bring along all the comforts of home in a Winnebago Brave.



**32T in Ambrosia** The exceptionally large windshield and centrally located 19" TV with available satellite system both enhance your viewing pleasure.

Brave SE



**26P** The Brave step combined handles makes

Brave



**35C in Moonstone** The extended StoreMore™ slideout provides more space to relax and entertain guests. And with ceiling-ducted roof air conditioning, everyone will stay plenty cool inside.



**35C in Moonstone** The attractive galley in this 35C features vinyl plank flooring, generous cabinetry, adjustable shelves in the pantry, and a recessed, double basin stainless steel sink.



**32T** An ergonomic pull-out workstation on the passenger side maximizes function, and available leather seats add a touch of sophistication.



**32T** The comfortable bathroom has a residential-height toilet and full shower/tub surround. There's even a convenient hamper in the 32T and 35C.

Brave SE



**26P** The Brave's wide entryway and electric step combined with interior and exterior assist handles makes getting in and out a breeze.

**31B in Almond Cream** With a queen-size bed, luxurious wood cabinets and convenient bedside lighting, you'll wake up refreshed after a good night's sleep.

The Brave has all the features and technology you've come to expect from Winnebago Industries.



The Powerline™ Energy Management System allows two roof air conditioners to operate on 30 amps of available power.



Clean up after outdoor adventures before heading indoors with the convenient exterior wash station.



Wide handles make it easier to open and close cabinet doors and drawers.



**F35C** The StoreMore Hydraulic Slideout System features exterior storage compartments that extend with the room to make loading and unloading easier.



**31B in Almond Cream** Plush, comfortable seating along with ceiling-ducted roof air conditioning beckons the relaxation seeker, while ample cabinet space stows all your belongings to keep things neat and orderly.



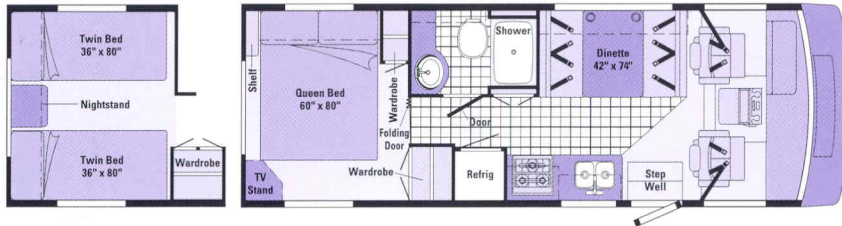
**F32T** The Brave's newly designed awning rail with built-in gutter keeps things dry by channeling water away from the awning.



Bathroom has... and full... there's even... the 32T

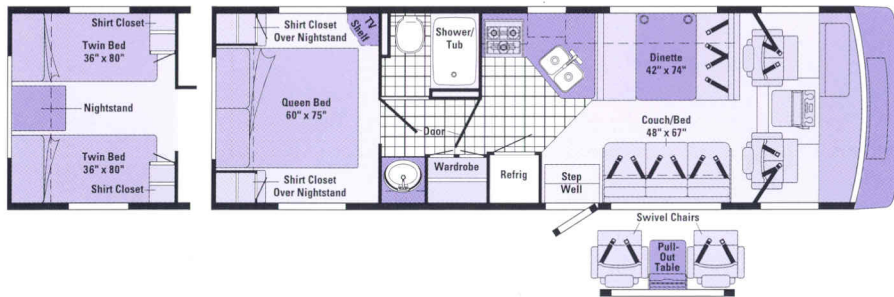
# One of these floorpl

BRAVE SE



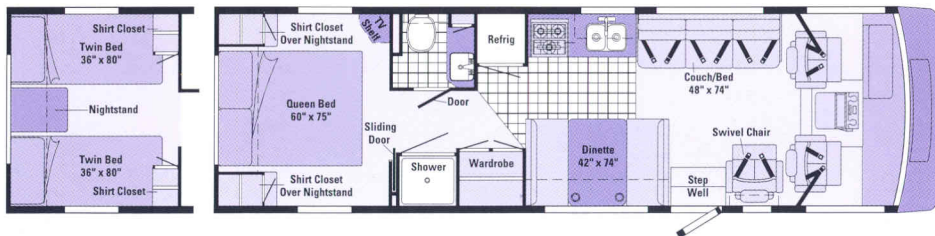
**26P**

- Private bath with large shower.
- Two wardrobes for ample storage.
- Widebody basement design
- Roomy in-line galley.



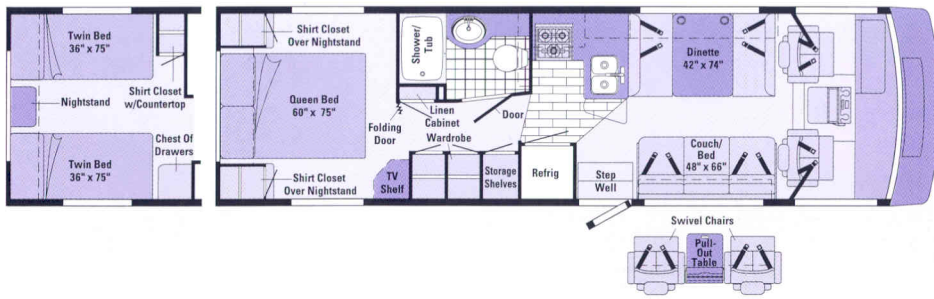
**29A**

- Split bath design with large shower/tub.
- Convenient angled galley.
- Widebody basement design.
- Swivel chairs and table available in lounge area.



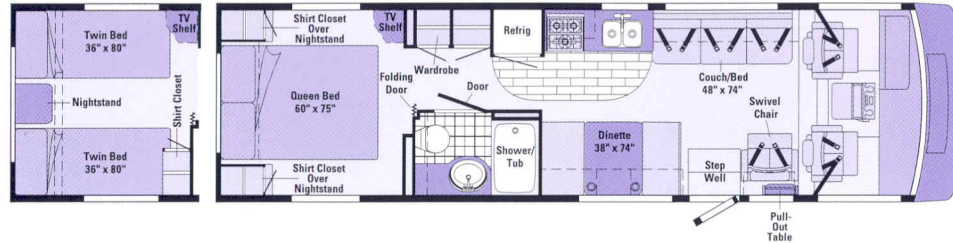
**31B**

- Split bath design with private shower.
- Roomy in-line galley.
- Widebody basement design.
- Swivel chair in lounge area.



### 30A

- Private bath with large shower/tub.
- Convenient L-shaped galley.
- Widebody basement design.
- Swivel chairs and table available in lounge area.



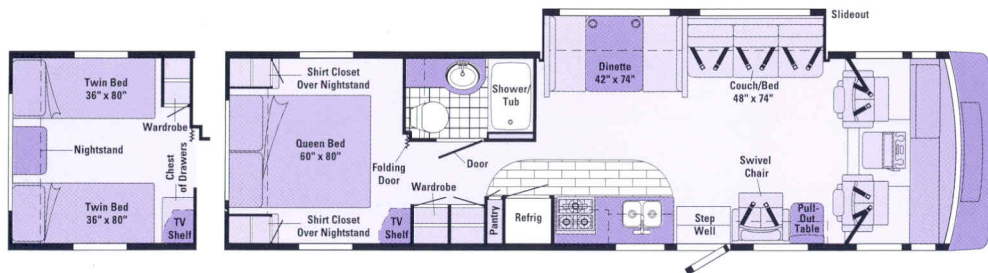
### 32T

- Private bath with large shower/tub.
- Roomy in-line galley.
- Widebody basement design.
- Choose from queen or twin bed option.



### 33V

- **STOREMORE™** Hydraulic Slideout System.
- Private bath with large shower/tub.
- Widebody basement design.
- Swivel chair and pullout table in lounge area.



### 35C

- **STOREMORE™** Hydraulic Slideout System.
- Private bath with large shower/tub.
- Widebody basement design.
- Choose from queen or twin bed option.



Standard Vinyl Flooring



Standard Plank Flooring



Seat Belts

Note: Dimensions shown are for sleeping space only and dashed lines denote overhead storage areas.

# ns will fit perfectly into your budget.



	BRAVE SE			BRAVE				
2000 BRAVE SPECIFICATIONS	26P	29A	31B	30A	32T	33V	35C	
Length	26'2"	29'9"	31'8"	30'8"	32'2"	33'1"	34'11"	
Exterior Width†	8'5.5"	8'5.5"	8'5.5"	8'5.5"	8'5.5"	8'5.5"	8'5.5"	
Interior Height	6'8"	6'8"	6'8"	6'8"	6'8"	6'8"	6'8"	
Interior Width	8'0.5"	8'0.5"	8'0.5"	8'0.5"	8'0.5"	8'0.5"	8'0.5"	
Fuel Capacity	40 gal.	75 gal.	75 gal.	75 gal.	75 gal.	75 gal.	75 gal.	
Fresh Water Capacity w/Heater*	56 gal.	71 gal.	71 gal.	85 gal.	85 gal.	66 gal.	67 gal.	
Holding Tank Capacity - Black/Gray	35/43 gal.	30/34 gal.	30/34 gal.	55/56 gal.	49/50 gal.	40/33 gal.	40/50 gal.	
LP Capacity◇	23 gal.	23 gal.	23 gal.	23 gal.	23 gal.	28 gal.	28 gal.	
Wheelbase	158.5"	178"	190"	190"	208"	200"	220"	
Exterior Height w/AC‡	11'5"	11'4"	11'5"	11'10"	11'10"	11'10"	11'9"	
Exterior Storage	46.2 cu. ft.	112.9 cu. ft.	117.3 cu. ft.	125.7 cu. ft.	137.2 cu. ft.	115.6 cu. ft.	143.1 cu. ft.	
GVWR - Standard/Option	12,300*/14,800 lbs.	14,800 lbs./NA	14,800 lbs./NA	14,800 lbs./NA	16,500 lbs./NA	16,500 lbs./NA	16,500 lbs./NA	

Optional	26P	29A	31B	30A	32T	33V	35C
<b>AUTOMOTIVE</b>							
<b>Chassis - Workhorse</b> 7.4L Vortec V-8 @ 290-HP, 124-Amp. Alternator, Anti-Lock Brake System	S	S	S	S	S	S	S
<b>Shocks/Stabilizer Pkg.</b> Frt.	O	O	O	O	O	O	O
<b>Tires (Radial)</b> w/Spare	S	S	S	S	S	S	S
<b>DRIVER CONVENIENCES</b>							
<b>Auto. Dual Battery Charge Control, w/Aux. Start Circuit</b>	S	S	S	S	S	S	S
<b>Aux. Battery Disconnect</b>	S	S	S	S	S	S	S
<b>Cab Seats (Stitchcraft®) Fabric w/3-Point Retracting Seat Belts</b> Reclining High-Back Design, Hinged Armrests, Fixed Lumbar Support, Swivel/Slide Pedestal	S	S	S	S	S	S	S
<b>Cab Seats (Stitchcraft®) Leather w/3-Point Retracting Seat Belts</b> Reclining High-Back Design, Hinged Armrests, Fixed Lumbar Support, Swivel/Slide Pedestal				O	O	O	O
<b>Cigarette Lighter/12-V Electrical Supply</b>	S	S	S	S	S	S	S
<b>Cruise Control</b>	S	S	S	S	S	S	S
<b>Curtain w/Track</b> Front w/Wrap-Around	S	S	S	S	S	S	S
<b>Convenience Tray</b>	S	S	S	S	S	S	S
<b>Heating/Air Conditioning</b> Auto. Blend Air System	S	S	S	S	S	S	S
<b>Hood Release</b> Ext. Key Locks	S	S	S	S	S	S	S
<b>Map Light, Map Pockets &amp; Floor Mats</b>	S	S	S	S	S	S	S
<b>Mirrors (Exterior)</b> Low Mounted, Manual Adjust	S	S	S	S	S	S	S
<b>Mirrors (Exterior)</b> Low Mounted, Electric Remote Control w/Defrost	O	O	O	O	O	O	O
<b>Rear View Monitor System (Videoman®),</b> Video/One-Way Audio	O	O	O	O	O	O	O
<b>Steering</b> Power Assisted w/Tilt Wheel	S	S	S	S	S	S	S
<b>Storage Cabinet</b> (Front Overhead)	S	S	S	S	S	S	S
<b>Sunvisors</b>	S	S	S	S	S	S	S
<b>Window (Driver &amp; Passenger Side)</b> Sliding, w/Screen	S	S	S	S	S	S	S
<b>Windshield Wipers</b> Pantograph Arms (Intermittent)	S	S	S	S	S	S	S
<b>Work Station</b> Pull-Out, Pass. Side, Dash	O	O	O	O	O	O	O
<b>ENTERTAINMENT</b>							
<b>Entertainment Center (Patio)*</b> DC Receptacle, AC Duplex Receptacle, TV Jack, Radio Antenna, w/AM/FM Cassette or CD, Speakers (2), Removable TV Table, Locking Door	O	O	O	O	O	O	O
<b>Satellite System Pre-Wiring</b>	S	S	S	S	S	S	S
<b>Stereo Power Switch</b> For Main or Aux. Battery Use	S	S	S	S	S	S	S
<b>Stereo w/Cassette Deck (Cab)</b> AM/FM, w/Speakers (4), Roof-Mounted Flexible Rubber Antenna	S	S	S	S	S	S	S
<b>Stereo w/CD Player (Cab)</b> AM/FM, w/Speakers (4), Roof-Mounted Flexible Rubber Antenna	O	O	O	O	O	O	O
<b>TV* Front (19" Color) w/Remote</b> Video Selection System	O	O	O	O	O	O	O
<b>TV* Front (19" Color) w/Remote &amp; VCR</b> Video Selection System	O	O	O	O	O	O	O
<b>TV Enhancement Package*</b> Antenna (Amplified), DC Recept. (2), Int. Jacks (2), Coax Wiring, Cable Input, TV Shelf or Stand	S	S	S	S	S	S	S
<b>SLIDEOUT</b>							
<b>StoreMore Slideout Room (Driver's Side Couch/Dinette)*</b> Overhead Cabinets, Ext. Room Cover, Compartments Slide Out w/Room, Includes Hydraulic Leveling Jacks					S	S	
<b>INTERIOR</b>							
<b>Cabinet Doors</b> Wood Stile & Rail w/Raised Panel on Upper Cabinets	S	S	S	S	S	S	S
<b>Carpeting w/Pad</b> Stain Resistant	S	S	S	S	S	S	S
<b>Ceiling Lights</b>	S	S	S	S	S	S	S
<b>Ceiling Vent*</b> Non-Powered, Lounge		S		S			
<b>Ceiling Vent</b> Non-Powered, Galley			S		S	S	S
<b>Ceiling Vent</b> Non-Powered, Bedroom*	S	S	S	S	S		
<b>Ceiling Vent</b> Powered, Bathroom	S	S	S	S	S	S	S
<b>Ceiling Ventilator Fan</b> Powered, Lounge				O			
<b>Ceiling Ventilator Fan</b> Powered, Galley					O		O
<b>Courtesy Light(s)</b>	S	S	S	S	S	S	S
<b>Color Themes (Interior)</b> Choice of Meadowbrook (Teal), Bluebonnet (Blue), Almond Cream (Beige)	S	S	S				
<b>Color Themes (Interior)</b> Choice of Seaspray (Teal), Cypress (Green), Ambrosia (Salmon), Moonstone (Blue)				S	S	S	S
<b>Comfort &amp; Convenience Package</b> Add - Wall Clock, Make-Up Lights, Exchange - Beverage Tray, High Intensity Reading Lights,* Wood Beveled Edge on Dinette Table & Galley Counter Tops, Upgraded Exterior Logos	O	O	O	O	O	O	O
<b>Lamp</b> Decorative Style, Wall-Mounted in Lounge			S		S	S	S
<b>Wardrobe</b> Mirrored Doors, Carpeted Floor, Upper Shelf (NA 33V), Clothes Rod, Drawers (33V)	S	S	S	S	S	S	S

Optional	26P	29A	31B	30A	32T	33V	35C
<b>BATHROOM</b>							
<b>Flooring (Vinyl)</b>	S	S	S	S	S	S	S
<b>Hamper</b>					S	S	S
<b>Lavatory Cabinet</b>	S	S	S	S	S	S	S
<b>Linen Cabinet</b>	S	S	S	S	S	S	S
<b>Magazine Rack</b>				S		S	
<b>Medicine Cabinet</b>	S	S	S	S	S	S	S
<b>Mirror(s)</b> Wall-Mounted	S		S	S	S	S	S
<b>Shower</b> w/Wall Surround, Flexible Shower Head, Dual Control	S		S				
<b>Shower/Tub</b> w/Wall Surround, Flexible Shower Head, Dual Control		S		S	S	S	S
<b>Shower Door</b> Pleated, w/Track	S	S	S	S	S	S	S
<b>Sink</b> Rectangular, Molded Soap Dishes			S				
<b>Sink</b> Oval, Ledge Back	S	S		S	S	S	S
<b>Skylight</b> w/Light (Shower Area)	S	S	S	S	S	S	S
<b>Toilet</b> (Residential Height) & Tissue Holder	S	S	S	S	S	S	S
<b>Towel Bars</b>	S	S	S	S	S	S	S
<b>Towel Ring(s)</b>	S	S			S	S	
<b>EXTERIOR</b>							
<b>Awning Rail w/Gutter</b>	S	S	S	S	S	S	S
<b>Awning (Patio)*</b>	O	O	O	O	O	O	O
<b>Bumpers</b> Front: Integrated into Front Cap, Rear: Aluminum w/End Caps	S	S	S	S	S	S	S
<b>Entrance Door w/Screen Door</b> Latch & Deadbolt	S	S	S	S	S	S	S
<b>Entrance Door Step (Electric)</b> w/Door Jamb Switch, Single	S	S	S				
<b>Entrance Door Steps (Electric)</b> w/Door Jamb Switch, Double				S	S	S	S
<b>Ext. Wash Station</b> w/Water Pump Switch	S	S	S	S	S	S	S
<b>Holding Tanks</b> Heated	S	S	S	S	S	S	S
<b>Ladder</b>	S	S	S	S	S	S	S
<b>Lower Exterior Paint</b>				S	S	S	S
<b>Outlet</b> 110-V, Curbside	S	S	S	S	S	S	S
<b>Porch Light</b> w/Int. Switch	S	S	S	S	S	S	S
<b>Sewer Hose &amp; Storage Compartment</b>	S	S	S	S	S	S	S
<b>Storage Compartments</b> w/Trunk Liner, Locking Doors, Single Paddle Latch	S	S	S	S	S	S	S
<b>Trailer Towing Package w/Hitch</b> (5,000 lb. Rating)	S	S	S	S	S	S	S
<b>Trunk*</b> Compartment, Rear				S	S	S	S
<b>Water Tank, Gravity Fill Door</b> Lockable	S	S	S	S	S	S	S
<b>Water Hookup</b> City	S	S	S	S	S	S	S
<b>Wheel Covers &amp; Rear Mud Flaps</b>	S	S	S	S	S	S	S
<b>Wheel Liners</b> Stainless Steel	O	O	O	O	O	O	O
<b>SYSTEMS</b>							
<b>Air Conditioner</b> Roof, 14,800-BTU	S	S	S	S	S		
<b>Air Conditioners*</b> Roof, Front/Rear: 13,500/13,500-BTU			O		O	S	S
<b>Air Conditioners (2)*</b> Roof, High Efficiency w/PowerLine Energy Management System					O	O	O
<b>Batteries (2)</b> Deep Cycle RV	S	S	S	S	S	S	S
<b>Electrical Control Center</b> 110-V AC Breakers, 12-V DC Fuses w/45-Amp. Integral Power Converter	S	S	S	S			
<b>Electrical Control Center</b> 110-V AC Breakers, 12-V DC Fuses w/Remote Mounted 45-Amp. Power Converter					S	S	S
<b>Furnace (Suburban®)</b> Ducted, Low Profile, 30,000-BTU	S	S					
<b>Furnace (Suburban®)</b> Ducted, Low Profile, 35,000-BTU			S	S	S	S	
<b>Furnace (Suburban®)</b> Ducted, Low Profile, 40,000-BTU							S
<b>Generator Prep Kit</b> Fuel Line, 12-V Wiring	S	S	S	S	S	S	S
<b>Generator* (Onan® Emerald™)</b> 4,000-Watt			O		O		
<b>Generator* (Onan® MicroLite™)</b> 4,000-Watt	O	O		O			
<b>Generator* (Onan® Emerald™)</b> 5,000-Watt			O		O	O	O
<b>Generator* (Onan® Emerald™)</b> 6,500-Watt			O		O	O	O
<b>Holding Tank Flushing System</b> Black Tank Only						S	
<b>Inverter*</b> 130-Watt for TV/VCR	O	O	O	O	O	O	O
<b>LP Tank</b> Permanent Mount w/Gauge	S	S	S	S	S	S	S
<b>Monitor Panel</b> Water, Holding & LP Tank Levels, Battery Condition Gauge, Water Heater Ignition Switch w/Pilot Indicator Light, Water Pump Switch, Located in Galley	S	S	S	S	S	S	S
<b>Power Cord</b> 30-Amp.	S	S	S	S	S	S	S

<b>Monitor &amp; Convenience Package</b> Absorbent Floor, Power Lock, Make-Up Lights, Extended Beverage Tray, High Intensity Reading Lights,* Wood Beveled Edge on Dinette Table & Galley Counter Tops, Upgraded Exterior Logos	S	S	S	S	S	S	S
<b>Lamp</b> Decorative Style, Wall-Mounted in Lounge		S		S	S	S	
<b>Wardrobe</b> Mirrored Doors, Carpeted Floor, Upper Shelf (NA 33V), Clothes Rod, Drawers (33V)	S	S	S	S	S	S	S
<b>Windows</b> Tinted	S	S	S	S	S	S	S
<b>Windows*</b> Dual Glazed, Thermo-Insulated (Single Panel Tip-Out in Bedroom)	O	O	O	O	O	FP	O
<b>GALLEY</b>							
<b>Coffee Maker</b>	O	O	O	O	O	O	O
<b>Counter Extension</b> Flip-Up	S			S			
<b>Decorative Dinette Light</b>							S
<b>Flooring (Vinyl)</b>	S	S	S				
<b>Flooring (Vinyl Plank)</b>				S	S	S	S
<b>Microwave</b> Touch Control	S	S	S	S	S	S	S
<b>Mirror</b> Wall-Mounted		S					
<b>Pantry</b>	S			S		S	S
<b>Range Hood</b> w/Light, Powered Vent	S	S	S	S	S	S	S
<b>Range w/Oven</b> 3-Burners, Magic Chef®	S	S	S	S	S	S	S
<b>Refrigerator/Freezer</b> Double-Door, 2-Way Electronic Controls	S	S	S	S	S	S	S
<b>Sink (Double)</b> Stainless Steel, Recessed w/Cover, Single Control Faucet	S	S	S	S	S	S	S
<b>Storage</b> below Dinette Seats	S	S	S	S	S	S	S
<b>Wall Border</b> Decorative	S	S	S	S	S	S	S
<b>BEDROOM</b>							
<b>Bedsprad(s), Pillows, Pillow Shams</b>	S	S	S	S	S	S	S
<b>Decorative Wall Border</b>				S	S	S	S
<b>Lamp(s)*</b> Decorative Style, Wall-Mounted	S	S	S	S	S	S	S
<b>Mattress*</b> Serta® Innerspring	S	S	S	S	S	S	S

<b>LP Tank</b> Permanent Mount w/Gauge	S	S	S	S	S	S	S
<b>Monitor Panel</b> Water, Holding & LP Tank Levels, Battery Condition Gauge, Water Heater Ignition Switch w/Pilot Indicator Light, Water Pump Switch, Located in Galley	S	S	S	S	S	S	S
<b>Power Cord</b> 30-Amp.	S	S	S	S	S	S	S
<b>Service Center (Electrical)</b> Cable TV Input, Power Cord				S	S	S	S
<b>Service Center</b> Provides Access to Sewer Drainage Valves, Ext. Shower, City Water Hookup	S	S	S	S	S	S	S
<b>Water Heater (Atwood®)</b> 6-gal., Elec. Ignition, Motoraid & Rear Auto. Heater	S	S	S	S	S	S	S
<b>Water Heater Winterization By-Pass Valve</b> Manual	S	S	S	S	S	S	S
<b>Water Pump (Demand)</b>	S	S	S	S	S	S	S
<b>Water System Winterizing Valve</b> Manual	S	S	S	S	S	S	S
<b>Water Tank Drain</b>	S	S	S	S	S	S	S
<b>SAFETY</b>							
<b>3-Point Cab Seat Belts</b>	S	S	S	S	S	S	S
<b>Assist Bar</b> Interior, Metal				S	S	S	S
<b>Assist Handle</b> Interior Wood, Exterior Metal*	S	S	S				
<b>Assist Handle*</b> Exterior				S	S	S	S
<b>Assist Strap</b> Interior	S	S	S				
<b>Carbon Monoxide Detector/Alarm, Fire Extinguisher (10-B.C.), Ground Fault Interrupter, LP Leak Detector/Alarm, Smoke Detector/Alarm</b>	S	S	S	S	S	S	S
<b>Escape Window</b>	S	S	S	S	S	S	S
<b>Lap Belts</b> in Designated Areas	S	S	S	S	S	S	S
<b>Rear High Mount Brake Light</b>	S	S	S	S	S	S	S
<b>Windshield</b> Laminated Safety Glass	S	S	S	S	S	S	S
<b>WARRANTY</b>							
<b>12-Month/15,000-Mile Basic Warranty, 36-Month/36,000-Mile Warranty on Structure,** 10 Year Limited Parts &amp; Labor Warranty on Roof</b>	S	S	S	S	S	S	S

† The Brave floorplans feature a widebody design—over 96." In making your purchase decision, you should be aware that some states restrict access on some or all state roads to 96" in body width. Before making your purchase decision, you should confirm the road usage laws in the states of interest to you.

\* Not all items available in combination. See dealer for details. NA=Not Available ◇ Capacities shown are tank manufacturer's listed water capacity (W.C.). Actual filled LP capacity is 80% of listing due to overfilling prevention device on tank.

† The height of each model is based on the curb weight of a typically equipped unit on the standard chassis. The actual height of your vehicle may vary by as much as 2" depending on chassis or equipment variations.

†P Feature Pending. \*\*See your dealer for complete warranty documentation information.

©Innebago Industries' continuing program of product improvement makes specifications, equipment, model availability and prices subject to change without notice. Comparisons to other motor homes are based on the most recent information available.



# Not all motor homes are built the same, or supported the same.

When you purchase a Winnebago Brave you benefit from unique advantages, beginning with some of the most comprehensive warranty programs in the industry. It includes a 12-month/15,000-mile basic protection plan, 36-month/36,000-mile warranty on the structure and a standard 10-year limited parts and labor warranty on the roof.

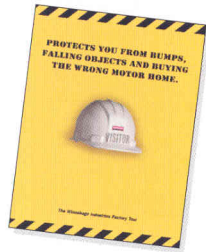


Mechanical emergency while on vacation? Go to your nearest Winnebago Industries dealer. TripSaver guarantees that qualifying, in-stock emergency warranty repair parts will be air-shipped from our factory within 24 hours. Plus, every new purchase comes with a one-year membership in our Premium Roadside Assistance Program, a 24-hour nationwide plan that covers road emergencies with free services like jump starts, tire changes, fuel delivery and lockout assistance.



In addition, Winnebago Industries vehicle owners are eligible to enroll in the Winnebago-Itasca Travelers (WIT) Club. As a member, you'll enjoy many benefits including mail forwarding, trip planning, rallies, caravans and more.

To learn more about what separates our motor homes from others, ask for this free guide next time you visit your Winnebago Industries dealer. It explains our superior manufacturing process. Use it to learn more about important safety and quality considerations as you shop for the motor home that's best for you.



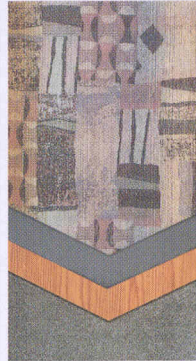
Visit us at [www.winnebagoind.com](http://www.winnebagoind.com)

• Seat belts are your most important hookup. Always buckle up.

## Interiors

### Brave SE

Meadowbrook  
with Waterford Oak



Bluebonnet  
with Waterford Oak



Almond Cream  
with Waterford Oak



### Brave

Seaspray  
with Waterford Oak



Ambrosia  
with Waterford Oak



Cypress  
with Waterford Oak



Moonstone  
with Waterford Oak

