

1999

MINNIE WINNIE®



1999 MINNIE WINNIE

We put our Minnie Winnie together with so many floorplans and options, it has a tendency to spoil its occupants.

Traveling long distances should be relaxing and enjoyable. That's the kind of thinking that went into the design of our widebody Minnie Winnie lineup. So don't be surprised as you become accustomed to the standard heated basement storage, or options like the TV/VCR in the front entertainment center, or the ducted roof air conditioning. There's also a new galley/couch slideout on our 30V that gives you plenty of room to cook, eat and relax. Of course, this kind of pampering is aided by one of the largest selections of floorplan options you're likely to find. And though it probably goes without saying, every floorplan is built from the ground up with the kind of strict construction standards that has made the Minnie Winnie superior to any other motor home in its class.



30V You'll appreciate the extra room the galley/couch slideout gives you in this new model. Furnishings like a flip-up counter top extension, recessed stainless steel double sink and available ducted roof air conditioning with adjustable ceiling vents make it easy to feel at home in the Minnie Winnie.



31A Whether you're relaxing on the couch or enjoying a nice meal at the dinette, the available overhead television is easy to see. The dinette, couch and slideout bunk all give you added sleeping space.



29U-DL The upgraded couch, fluorescent ceiling lights and cherry wood cabinets of our DL model add a touch of elegance to the already luxurious 29U. The pantry with mirrored doors gives you lots of extra storage space for food and other items.



30V This L-shaped galley makes cooking a pleasure, with conveniences like a three-burner range and abundant storage. With the slideout extended, you get even more space. An appliance cabinet against the back of the galley counter makes wise use of space, and a glass partition prevents splashing into the lounge area.



31A Widebody construction adds space in the bedroom to give you plenty of storage and more room to move around. There's also a queen-size bed, shirt closets, nightstands and a shelf for your TV.



29U-DL There's always plenty of light in the bathroom with a skylight and larger ceiling lights. It also contains a pleated fabric shower door and a three-rod towel rack in the door.



30V Widebody basement storage features heated compartments for multi-season use. Most models feature pass-through storage. The belt-line storage doors are fully hinged and insulated, with single handle latches and gas struts for your convenience.

1999 MINNIE WINNIE SPECIFICATIONS

1999 MINNIE WINNIE	29U	30V	31A
Length	29'4"	30'2"	30'10"
Exterior Width ^Δ	8'3.9"	8'3.9"	8'3.9"
Interior Height	6'7"	6'7"	6'7"
Interior Width	8'	8'	8'
Fuel Capacity	55 gal.	55 gal.	55 gal.
Fresh Water Capacity w/Heater	37 gal.	41 gal.	37 gal.
Holding Tank Capacity - Black/Gray	34/31 gal.	35/38 gal.	34/31 gal.
LP Capacity ^Δ	18 gal.	18 gal.	18 gal.
Wheelbase	190"	205"	205"
Exterior Height w/Roof Air†	11'5"	11'5"	11'5"
Exterior Storage (Std.)	83.6 cu. ft.	83 cu. ft.	96.9 cu. ft.
GVWR	14,050 lbs.	14,050 lbs.	14,050 lbs.

S Standard
O Optional

29U
30V
31A

AUTOMOTIVE			
Chassis - Ford - 6.8L Triton V10 @ 265 HP, 130-amp. alternator, driver & passenger airbags (second generation)	S	S	S
Engine*- diesel 7.3L power stroke turbo diesel V8 @ 215 HP	O		
Tires & spare (radial)	S	S	S
DL UPGRADE PACKAGE			
Deluxe upgrade package* Exterior: wheel liners, automotive rear bumper, radius transition panel, additional graphics & paint, fiberglass running boards w/wheel well trim, elec. mirrors w/defrost Interior: deluxe cab seats, adjustable reading lights, raised panel cabinet doors stile & rail (overhead), upgraded wall lamps, day/nighter pleated blinds, upgraded furniture style, lounge pillow (couch module), black galley appliances, upgraded conv. tray, upgraded vinyl floor covering, carpet & sidewall material, fluorescent light in galley, move monitor panel to range hood	O	O	O
DRIVER CONVENIENCES			
3-point retracting seat belts (drv./frt. pass.) - seats w/single armrest, recline, slide pedestal, lumbar support	S	S	S
Battery charge control - dual, automatic	S	S	S
Beverage holder	S	S	S
Cab carpet & rubber floor mats	S	S	S
Cigarette lighter/12-V electrical supply	S	S	S
Convenience tray	S	S	S
Cruise control	S	S	S
Divider curtain - cab	S	S	S
Dome light	S	S	S
Heating/air conditioning - automotive blend air system	S	S	S
Hood release - interior	S	S	S
Mirrors (exterior)* - electric remote w/defrost	O	O	O
Mirrors (exterior) - manual adjust	S	S	S
Power door locks & windows	S	S	S
Start circuit - auxiliary	S	S	S
Steering - power assisted w/tilt wheel	S	S	S
Sunvisors	S	S	S
Trim panels - driver & passenger doors (chassis supplied)	S	S	S
Windshield wipers (intermittent)	S	S	S

S Standard
O Optional

29U
30V
31A

ENTERTAINMENT			
Entertainment center (patio) - AM/FM radio, cassette deck, speakers (2), DC receptacle, 110-V outlet, TV jack, radio antenna, removable TV table, locking door	O	O	O
Overhead TV storage* - roll-up tambour door, TV strap	S	S	S
Stereo (cab) - (factory supplied) AM/FM cassette deck, speakers (4)	S	S	S
TV enhancement package* - antenna (amplified), DC receptacles (2), int. jacks (2), coax wiring, cable input, bedroom TV shelf or stand	S	S	S
TV, front (19" color)* & VCR w/remote - video selection system, w/slideout single bunk	O	O	O
TV, front (19" color)* w/remote - video selection system, w/slideout single bunk	O	O	O
TV, lounge (13" color)* & VCP w/remote, 12-volt - slide/swivel shelf, locking safety latch	O	O	O
Satellite system pre-wiring	S	S	S
Satellite system [∞] - without receiver, digital elevation sensor	O	O	O
SLIDEOUT			
Slideout room (driver's side) - galley/couch, slideout cover		S	
INTERIOR			
Bed (front overhead) - sliding side windows, privacy curtain, storage cabinets	S	S	S
Cabinet doors - wood stile and rail, raised panel on upper cabinet doors	S	S	S
Carpeting w/pad - stain resistant	S	S	S
Ceiling lights	S	S	S
Ceiling vent - powered, bathroom	S	S	S
Ceiling ventilator fan* - powered, front bunk	O	O	O
Ceiling vents* - non-powered, bedroom, front overhead bed & galley	S	S	S
Clock - decorator style	S	S	S
Color themes (interior) - choice of Mint (green), Castleton (taupe), w/Waterford Oak woodgrain	S	S	S
Color themes (interior) DL upgrade - choice of Willow (taupe), Cloud (gray), w/Salem Cherry woodgrain	O	O	O
Courtesy lights - w/wall switches	S	S	S
Decorator lamp	S		
Ladder* - overhead bed	O	O	O
Wardrobe - carpeted floor, clothes rod, mirrored door(s), (shelf & drawers on 31A)	S		S
Window coverings* - day/nighter pleated blinds, lounge, dinette & bedroom	O	O	O

[∞]TV satellite system options do not include programming activation. Quality reception is available only in the lower 48 states.

Winnebago Industries' continuing program of product improvement makes specifications, equipment, model availability and prices subject to change without notice. Comparisons to other motor homes are based on the most recent information available.

S Standard
O Optional

	29U	30V	31A
Windows - dual glazed, thermo-insulated	O	O	O
Windows - tinted, 62% light transmittal	S	S	S
GALLEY			
Appliance storage cabinet		S	
Coffee maker	O	O	O
Counter extension - flip-up		S	
Flooring (vinyl)	S	S	S
Folding chairs* (2)			O
Galley rail	S		S
Glass partition - with wood trim		S	
Microwave oven - touch control	S	S	S
Microwave prep kit	S	S	S
Pantry	S	S	S
Range hood - w/light, powered vent	S	S	S
Range w/oven - 3 burners, drawer below	S	S	S
Refrigerator/freezer - double-door, flush mounted	S	S	S
Sink (double) - stainless steel, single control faucet, recessed w/countertop cover	S	S	S
Spice rack	S		
Storage - below dinette seats	S	S	S
Table & chairs (2)			O
BEDROOM			
Mattress(es), bedspread(s), pillows, pillow shams	S	S	S
Underbed storage - gas spring bed lifts	S	S	S
Wall border, decorative	S	S	S
BATHROOM			
Clothes rod - removable	S	S	S
Flooring (vinyl)	S	S	S
Lavatory cabinet	S	S	S
Linen cabinet			S
Magazine rack		S	
Medicine cabinet	S	S	S
Mirror - wall-mounted		S	
Shower - flexible shower head		S	
Shower/tub - flexible shower head	S		S
Shower door - pleated	S	S	S
Shower light, skylight	S	S	S
Sink - rectangular, molded soap dishes	S	S	S
Toilet - marine style, tissue holder	S	S	S
Towel bar		S	
Towel rack 3 rods - built into door	S	S	S
Towel ring	S	S	
Water pump switch	S	S	S
EXTERIOR			
Awning* - patio, 14'	O	O	O
Awning rail	S	S	S
Bumper - front: chrome	S	S	S
Entrance door step (electric)	S	S	S
Entrance door w/screen door - deadbolt lock	S	S	S
Graphics package (exterior)* - choice of Blue Green Metallic (recommended w/Willow) or Platinum (recommended w/Cloud)	S	S	S
Holding tank compartment - heated	S	S	S
Ladder	S	S	S

‡ Capacities shown are tank manufacturer's listed water capacity (W.C.). Actual filled LP capacity is 80% of listing due to safety shut-off required on tank.

† The height of each model is based on the curb weight of a typically equipped unit on the standard chassis. The actual height of your vehicle may vary by as much as 2" depending on chassis or equipment variations.

△ The Minnie Winnie floorplans feature a widebody design - over 96". In making your purchase decision, you should be aware that some states restrict access on some or all state roads to 96" in body width. Before making your purchase decision, you should confirm the road usage laws in the states of interest to you.

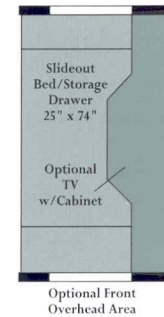
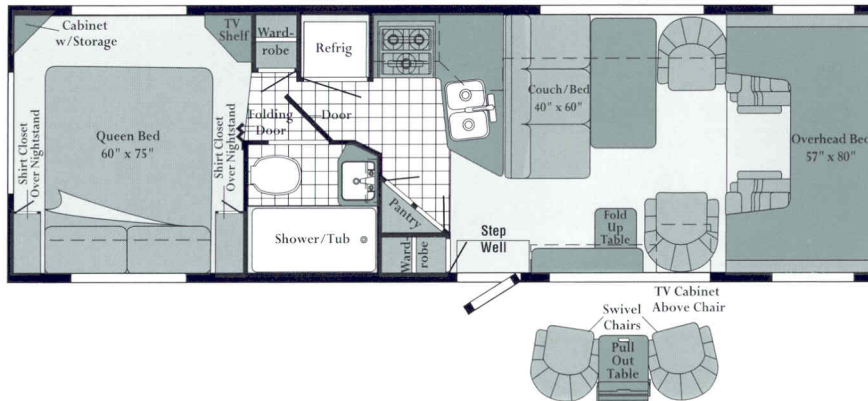
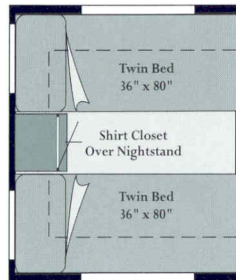
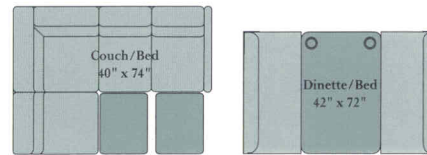
*Not all options available in combination. See your dealer for details.

**See your dealer for complete warranty documentation information.

S Standard
O Optional

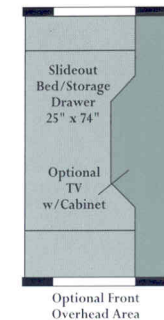
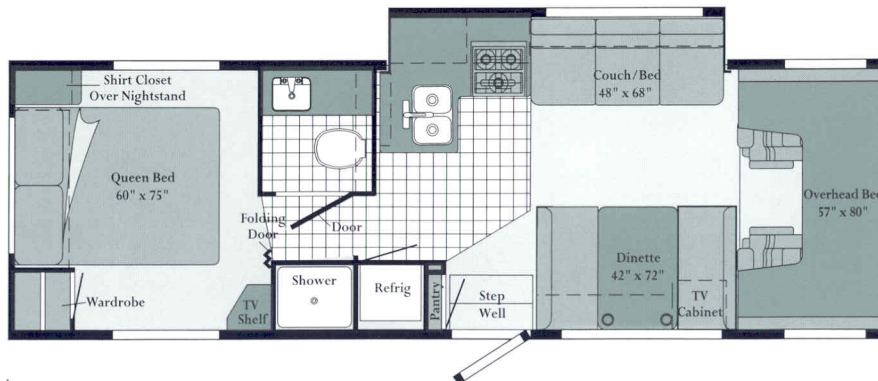
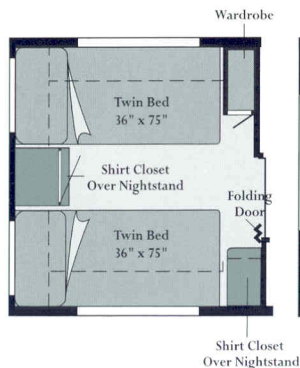
	29U	30V	31A
Mud flaps - rear	S	S	S
Outlet - 110-V, curbside	S	S	S
Porch light - interior switch	S	S	S
Power cord - 30-amp.	S	S	S
Running boards (aluminum)	S	S	S
Service center - w/cable TV input, city water hook-up, drainage valves, exterior wash station w/pump switch, power cord, light	S	S	S
Sewer hose - w/storage	S	S	S
Storage compartments - locking doors w/single latch & gas struts	S	S	S
Trailer towing package - w/hitch	O	O	O
Trailer wiring extension	S	S	S
Wheel covers	S	S	S
Wheel liners* - stainless steel	O	O	O
SYSTEMS			
2 maintenance free batteries*	O	O	O
AC/DC electrical distribution system - load center combination, 45 amp. converter/charger	S	S	S
Air conditioning pre-wiring - roof	S	S	S
Air conditioner (Coleman) - roof, 14,800-BTU	O	O	O
Auxiliary automotive heater		O	
Battery - deep cycle	S	S	S
Battery disconnect system	S	S	S
City water hook-up	S	S	S
Furnace - ducted, low profile, 30,000-BTU	S	S	S
Generator* (Onan) - 4,000-watt, hourmeter, 110-V wiring, switches, gas	O	O	O
Generator* (Onan) - 3,600-watt, hourmeter, 110-V wiring, switches, LP	O		
Generator prep kit* - gas line, 12-V wiring	S	S	S
Inverter* - 110-V for TV/VCR, 130-watt	O	O	O
LP tank - permanent mount w/gauge	S	S	S
Monitor panel - water, holding & LP tank levels, battery condition gauge, water pump switch, water heater ignition switch w/pilot indicator light, located in galley	S	S	S
Water drain system - through floor	S	S	S
Water fill door - lockable	S	S	S
Water heater - 6-gal., electronic ignition	S	S	S
Water heater (Motoraid) & auxiliary automotive heater	O		O
Water heater winterizing by-pass valve	S	S	S
Water pump (demand)	S	S	S
Water system winterizing valve	S	S	S
SAFETY			
3-point seat belts (drv./frt. pass.)	S	S	S
Assist handle* - exterior	S	S	S
Assist handle - interior, wood		S	S
Assist strap - interior	S	S	S
Carbon monoxide detector/alarm	S	S	S
Escape window	S	S	S
Fire extinguisher (10-B.C.)	S	S	S
Ground fault interrupter	S	S	S
High mount rear brake light	S	S	S
LP leak detector/alarm	S	S	S
Lap belts - in selected areas	S	S	S
Smoke detector/alarm	S	S	S
WARRANTY			
12 month/15,000 mile basic warranty, 36 month/36,000 mile warranty on structure,** 10 year limited parts & labor warranty on roof	S	S	S

PLENTY OF FLOORPLAN OPTIONS TO GO AROUND.



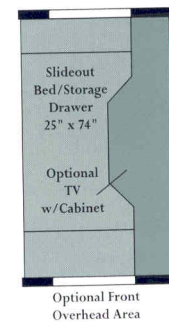
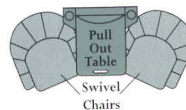
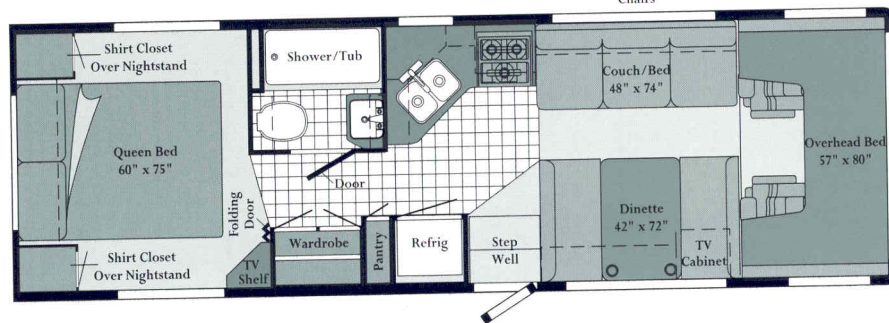
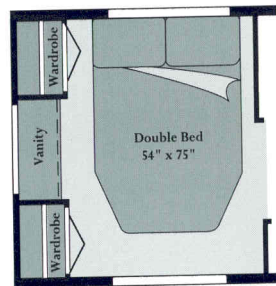
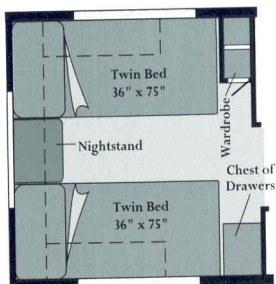
29U

- Widebody basement design.
- Large shower/tub in bathroom.
- L-shaped galley with corner pantry.
- Numerous floorplan options.



30V

- New galley/lounge slideout design.
- Wardrobe storage in queen and twin bedrooms.
- Widebody basement design.
- Lots of sleeping space.



31A

- Widebody basement design.
- Roomy lounge, galley and bedroom areas.
- Large bathroom.
- Extra storage space in the bedroom.



29U-DL



Our high standards made us one of the first motor home manufacturers to earn the title "Qualified Vehicle Modifier," identifying us as a leader among companies who build on Ford chassis.



Standard Vinyl Flooring

Note: Dimensions shown are for sleeping space only and dashed lines denote overhead storage areas.

INTERIORS

Mint
with Waterford Oak

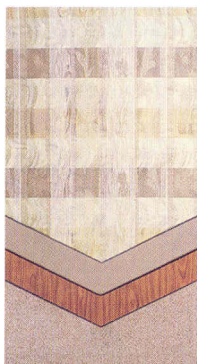


Castleton
with Waterford Oak



Every motor home interior is stitched, constructed, sanded and stained with care in our factory by our own employees. We even perform extensive wear tests to ensure long-lasting durability. This concept is called Home Comfort Design, and it gives us complete control over the fit and finish of the final product. We take great pride in offering you high-quality, handcrafted living spaces to match your lifestyle.

Willow (DL)
with Cherry Wood



Cloud (DL)
with Cherry Wood



EXTERIOR VALANCE PANELS



Platinum

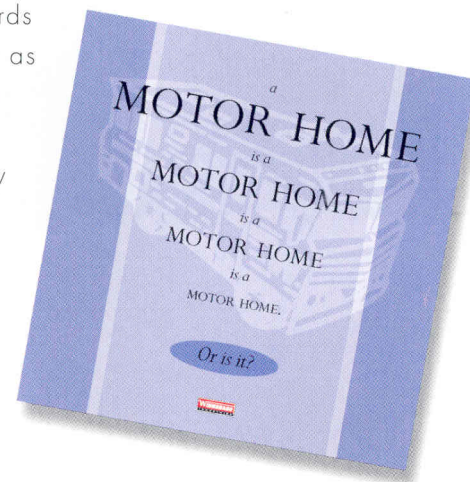


Blue Green

This year's exterior lower valance colors are Platinum, suggested with Cloud (DL); and Blue Green, suggested with Willow (DL). However, you may order either valance color, regardless of your DL interior choice.

Ask for the Winnebago Industries buyer's guide and discover why all motor homes are not created equal.

The process of buying a motor home can be intimidating, even if you're a veteran. And in a market saturated with flashy first impressions, the true signs of quality are often hard to spot. So we've put together a user-friendly guide to help you make some educated observations as you compare Winnebago Industries motor homes to the competition. It explains our uniquely superior on-site manufacturing processes, highlights the importance of meeting (and exceeding) industry standards and, best of all, it's free. Use it as a reference tool when shopping around, or familiarize yourself with some key safety and quality considerations. Ask for the guide next time you visit your Winnebago Industries dealer, and upgrade your motor home buying savvy.



Visit us at www.winnebagoind.com

WINNEBAGO Built proudly by
WINNEBAGO INDUSTRIES

© 1998 Winnebago Industries, Inc. Forest City, IA 50436. Printed in USA.

Seat belts are your most important hookup. Always buckle up.