

1998 SUNRISE® SERIES

SUNRISE SE

SUNRISE DL

SUNRISE



3100

You've never seen a

The 1998 Itasca Sunrise series provides more of what you're looking for in a motor home. More room, comfort, value and choices. The Sunrise SE, Sunrise DL and Sunrise lineups include nine widebody, basement storage models to choose from, each one offering something different. So if you haven't seen a Sunrise lately, take a look. You're bound to find one that works for you.

SUNRISE

Traveling on a budget does not require cutting your standards. Our four Sunrise models offer widebody comfort and full basement, pass through storage at a very attractive price. You'll even find a slideout available on the 35WP.

Sunrise goes far beyond custom-crafted furniture and professionally designed fabrics and carpet. Each Sunrise series widebody is a full 5 1/2" wider than the traditional motor home, meaning there's more living space inside and increased storage throughout the coach. For maximum comfort, each model features a 3 1/4" thick roof with ducted roof AC.



34WA

Designed with ease of use in mind, the Sunrise galley features easy care vinyl plank flooring and a maximum amount of counter and storage space.



34WA

Sunrise like this before.

SUNRISE SE

Our three Sunrise SE models offer travelers the perfect combination of comfort and floorplan flexibility in an entry level motor home with basement storage (not to mention heated holding tanks).



Like all Sunrise models, the Sunrise SE includes many features you won't find on most other manufacturer's motor homes, like a seamless fiberglass roof and steel appliance tie-downs.

SUNRISE DL

Sunrise DL luxury features include raised panel wood cabinetry, a water purification system and an available Mobile Theater Sound System. Standard exterior refinements include a convenient driver's door, lower valance paint and stainless steel wheel liners.

This bedroom features a TV shelf and dual shirt closets with nightstands below. Professionally designed fabrics nicely coordinate with the cabinetry and wainscoting.



SUNRISE SERIES DECOR OPTIONS

All fabrics selected for use in the Sunrise series must pass a series of tests to ensure strength and durability. Just one example is the double rub test, which mechanically simulates a person getting in and out of a seat up to 30,000 times to see how the fabrics wear.

SILVERSAGE



Main
Accent
Wood
Carpet

SUNRISE DL

EDENPARK



SUNRISE DL

BARCELONA



Main
Accent
Wood
Carpet

SUNRISE

GEMSTONE



SUNRISE SE/SUNRISE

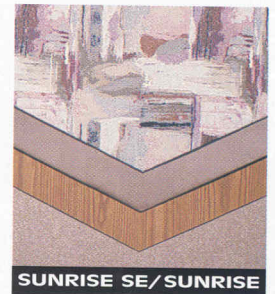
HORIZON



Main
Accent
Wood
Carpet

SUNRISE SE/SUNRISE

SANDPIPER



SUNRISE SE/SUNRISE

Our team of professional interior designers pride themselves on selecting color schemes and patterns that will look good for years to come.

EXTERIOR VALANCE PANELS

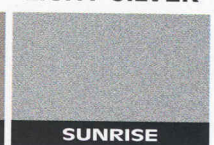
WINTERGREEN PLATINUM LIGHT SILVER



SUNRISE DL



SUNRISE DL



SUNRISE

Exterior lower valance colors for the Sunrise DL are Wintergreen, suggested with Silversage; and Platinum, suggested with Edenpark. However, you may order either valance color, regardless of your Sunrise DL interior choice. For the Sunrise, Light Silver is the lower valance color offered.

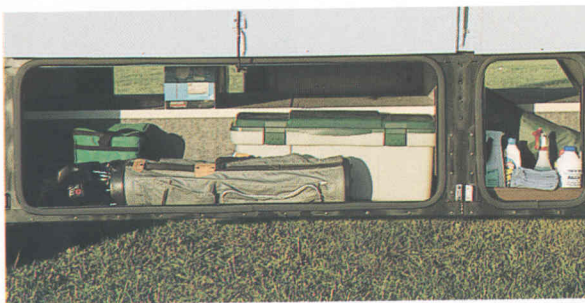
Choose from 9 Affordable All New Models.



32WQ

While our smooth, one-piece fiberglass exterior is certainly good looking, the advantages of this design go far beyond mere aesthetics. This outer skin is laminated to a rigid lauan backing material. A layer of block foam insulation is applied over this backing material. This insulation is then routed to embed the full welded aluminum framework. The result is one of the most durable, rigid sidewall constructions in the industry.

Pass through storage compartments provide easily accessible storage space for both large and small items. We added convenience by equipping the fully hinged and insulated belt-line storage doors with a single handle latch for easy one-handed opening.



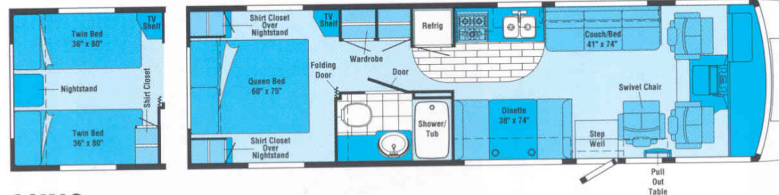
32WQ

SUNRISE



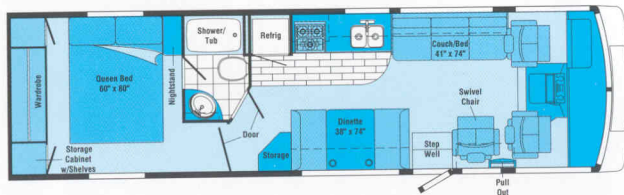
30WQ

Nowhere is floorplan flexibility more evident than in the 30WQ. Floorplan options include an available forward facing couch with twin swivel chairs in the living area.



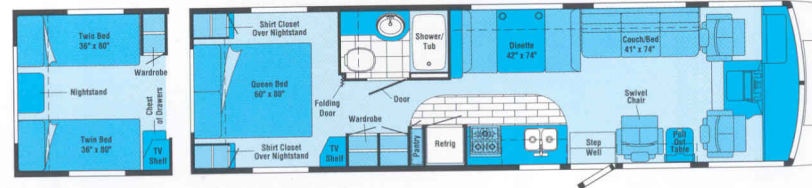
32WQ

This sensible floorplan includes plenty of living and storage space. A large wardrobe is conveniently located across the aisle from the bathroom.



34WA

The side aisle bedroom entrance offers several advantages, including increased privacy and a private entrance to the bath.



35WP

Our largest Sunrise includes an available slideout in the living area and a double wardrobe.

31WQ



SUNRISE SE

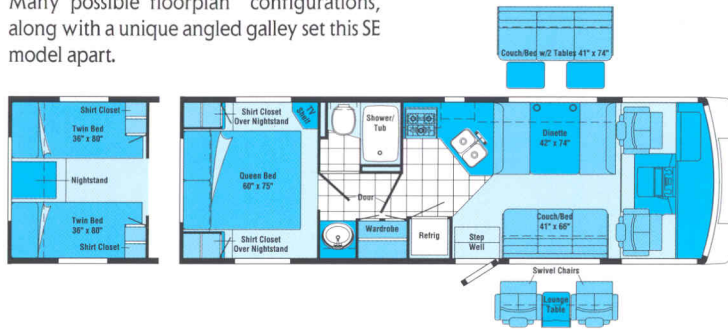


26WU

Travel is more convenient with easy cleaning vinyl flooring and large amounts of interior storage space. Includes a queen or available twin beds in the bedroom.

29WQ

Many possible floorplan configurations, along with a unique angled galley set this SE model apart.



31WQ

The roomy living area comes complete with couch, swivel chair and dinette. Includes a queen or available twin beds in the bedroom.

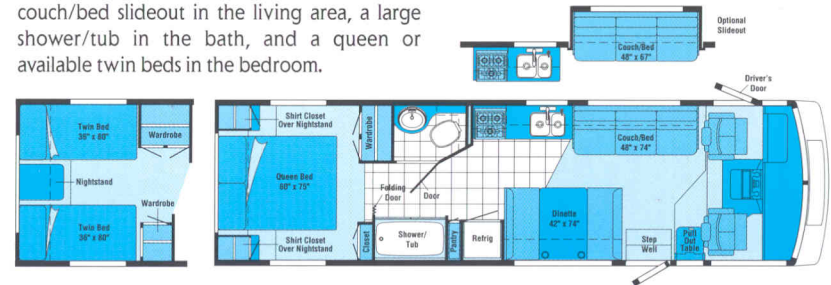
31DQ



SUNRISE DL

33DQ

Our largest DL model offers an available couch/bed slideout in the living area, a large shower/tub in the bath, and a queen or available twin beds in the bedroom.



31DQ

The same floorplan design as the 31WQ, accented with popular DL upgraded furniture styling and decorative interior lighting as well as a standard driver's door.



Note: Dimensions shown are for sleeping space only and dashed lines denote overhead storage areas.

GALLEY	Sunrise SE		Sunrise DL		Sunrise				
	26WU	29WQ	31WQ	31DQ	33DQ	30WQ	32WQ	34WA	35WP
Coffee Maker	O	O	O	O	O	O	O	O	
Counter Extension Flip-Up	S					S			
Flooring (Vinyl)	S	S	S	S	S				
Flooring (Vinyl Plank)						S	S	S	
Galley Rail	S	S	S	S	S	S	S	S	
Microwave Oven Touch Control	S	S	S	S	S	S	S	S	
Mirror Wall-Mounted in Dining Area			S	S	S				
Pantry	S				S	S		S	
Range Hood w/Light, Powered Vent	S	S	S	S	S	S	S	S	
Range w/Oven 3 Burners (1 High Output)	S	S	S	S	S	S	S	S	
Refrigerator/Freezer Double-Door	S	S	S	S	S	S	S	S	
Sink (Double) Stainless Steel, Recessed w/Cover(s)	S	S	S	S	S	S	S	S	
Storage below Dinette Seat	S	S	S	S	S	S	S	S	
Water Purification System Separate Faucet				S	S				
BEDROOM	26WU	29WQ	31WQ	31DQ	33DQ	30WQ	32WQ	34WA	35WP
Bedsprad(s), Pillows, Pillow Shams	S	S	S	S	S	S	S	S	S
Lamp(s)* Decorator Style, Wall-Mounted	S	S	S	S	S	S	S	S	S
Mattress Innerspring	S	S	S	S	S	S	S	S	S
Throw Pillow(s)*				S	S				
BATHROOM	26WU	29WQ	31WQ	31DQ	33DQ	30WQ	32WQ	34WA	35WP
Flooring (Vinyl)	S	S	S	S	S	S	S	S	S
Hamper							S	S	
Linen Cabinet	S	S	S	S	S	S	S	S	S
Magazine Rack						S			
Make-Up Lights				S	S				
Medicine Cabinet	S	S	S	S	S	S	S	S	S
Mirror Wall-Mounted, (2) on 31DQ	S	S	S	S	S	S	S	S	S
Lavatory Cabinet	S	S	S	S	S	S	S	S	S
Shelf Rear Bath Wall			S	S					
Shower Flexible Shower Head	S	S	S						
Shower/Tub Flexible Shower Head	S			S	S	S	S	S	S
Shower Door Pleated, w/Track	S	S	S	S	S	S	S	S	S
Sink Rectangular, Molded Soap Dishes			S	S					
Sink Large Oval, Ledge Back	S	S		S	S	S	S	S	S
Skylight w/Light (Shower Area) (Additional Skylight in 33DQ Bath Area)	S	S	S	S	S	S	S	S	S
Storage Cabinet				S					
Toilet (Marine Style) & Tissue Holder	S	S	S	S	S	S	S	S	S
Towel Bar	S	S	S	S	S	S	S	S	S
Towel Rack (3) Recessed into Door	S	S	S	S	S	S	S	S	S
Towel Ring	S	S		S	S	S			
EXTERIOR	26WU	29WQ	31WQ	31DQ	33DQ	30WQ	32WQ	34WA	35WP
Awning Rail	S	S	S	S	S	S	S	S	S
Awning (Patio)	O	O	O	O	O	O	O	O	O
Bumpers Rustproof, Front: Integrated into Front Cap, Rear: Formed Aluminum w/End Caps	S	S	S	S	S	S	S	S	S
Entrance Door w/Screen Door Latch & Deadbolt Lock	S	S	S	S	S	S	S	S	S
Entrance Door Step (Electric) w/Door Jamb Switch, Single	S	S	S	S	S				
Entrance Door Steps (Electric) w/Door Jamb Switch, Double						S	S	S	S
Holding Tanks Heated Compartment	S	S	S	S	S	S	S	S	S
Ladder	S	S	S	S	S	S	S	S	S
Lower Exterior Paint				S	S	S	S	S	S
Outlet 110-V, Curbside	S	S	S	S	S	S	S	S	S
Porch Light Interior Switch	S	S	S	S	S	S	S	S	S
Sewer Hose & Storage Compartment	S	S	S	S	S	S	S	S	S
Wash Station Pullout w/Water Pump Switch	S	S	S	S	S	S	S	S	S
Storage Compartments w/Trunk Liner, Steel Construction, Locking Doors	S	S	S	S	S	S	S	S	S

SYSTEMS	Sunrise SE		Sunrise DL		Sunrise				
	26WU	29WQ	31WQ	31DQ	33DQ	30WQ	32WQ	34WA	35WP
Tire Tools Wrench, Leverage Bar	S	S	S	S	S	S	S	S	S
Trailer Towing Package w/Class II Hitch	S	S	S	S	S	S	S	S	S
Water Fill Door Lockable	S	S	S	S	S	S	S	S	S
Water Hook-Up	S	S	S	S	S	S	S	S	S
Wheel Covers (NA 31DQ, 33DQ) & Rear Mud Flaps	S	S	S	S	S	S	S	S	S
Wheel Liners* Stainless Steel	O	O	O	S	S	O	O	O	O
SYSTEMS	26WU	29WQ	31WQ	31DQ	33DQ	30WQ	32WQ	34WA	35WP
Air-Conditioning Pre-Wiring Roof	S	S	S	S	S	S	S	S	S
Air-Conditioner* Roof, 14,800-BTU	O	O	O	O	O	O	O	O	O
Air-Conditioners* Roof, Front/Rear: 13,500/13,500-BTU			O	O	O	O	O	O	O
Batteries (2) Deep Cycle RV	S	S	S	S	S	S	S	S	S
Electrical Control Center 110-V AC/12-V DC, 15-Amp. Batt. Charger, 45-Amp. Converter, DC Fuses, AC Breakers	S	S	S	S	S	S	S	S	S
Electrical Distribution System AC Breakers, DC Breakers, 45-Amp. Converter/Charger								S	S
Furnace Ducted, Low Profile, 30,000-BTU	S	S							
Furnace Ducted, Low Profile, (Elec. Ign.), 35,000-BTU			S	S	S	S	S		
Furnace Ducted, Low Profile, (Elec. Ign.), 40,000-BTU								S	S
Generator Prep Kit* Fuel Line, 12-V Wiring	S	S	S	S	S	S	S	S	S
Generator* 4,000-Watt	O	O	O	O	O	O	O	O	O
Generator* 5,000 or 6,500-Watt			O	O	O	O	O	O	O
Hydraulic Leveling Jacks				O	O				
LP Tank Permanent Mount w/Gauge	S	S	S	S	S	S	S	S	S
Monitor Panel Water, Holding & LP Tank Levels, Battery Condition Gauge, Water Heater Ignition Switch w/Pilot Indicator Light, Water Pump Switch, Located in Galley	S	S	S	S	S	S	S	S	S
Power Cord 30-Amp.	S	S	S	S	S	S	S	S	S
Service Center Provides Access to Sewer Compartment, Power Cord (NA 35WP), Cable TV Input, City Water Hook-Up								S	S
Water Heater 6-gal., Electronic Ignition, Motoraid & Rear Automotive Heater	S	S	S	S	S	S	S	S	S
Water Heater Winterization By-Pass Valve	S	S	S	S	S	S	S	S	S
Water Pump (Demand)	S	S	S	S	S	S	S	S	S
Water System Winterizing Valve	S	S	S	S	S	S	S	S	S
SAFETY	26WU	29WQ	31WQ	31DQ	33DQ	30WQ	32WQ	34WA	35WP
3-Point Cab Seat Belts	S	S	S	S	S	S	S	S	S
Assist Handle Interior & Exterior	S	S	S	S	S	S	S	S	S
Assist Strap Interior	S	S	S	S	S	S	S	S	S
Carbon Monoxide Detector/Alarm, Fire Extinguisher (10-B.C.), Ground Fault Interrupter, LP Leak Detector/Alarm, Smoke Detector/Alarm	S	S	S	S	S	S	S	S	S
Escape Window	S	S	S	S	S	S	S	S	S
Lap Belts in Designated Areas	S	S	S	S	S	S	S	S	S
Rear High Mount Brake Light	S	S	S	S	S	S	S	S	S
Windshield Laminated Safety Glass	S	S	S	S	S	S	S	S	S

△ The Sunrise floorplans feature a widebody design — over 96". In making your purchase decision, you should be aware that some states restrict access on some or all state roads to 96" in body width. Before making your purchase decision, you should confirm the road usage laws in the states of interest to you.

◇ Capacities shown are tank manufacturer's listed water capacity (W.C.). Actual filled LP capacity is 80% of listing due to safety shut-off required on tank.

- The height of each model is based on the curb weight of a typically equipped unit on the standard chassis. The actual height of your vehicle may vary by as much as 2" depending on chassis or equipment variations.

* Not all options available in combination. See dealer for details.
S Standard
O Optional
NA Not Available

Winnebago Industries' continuing program of product improvement makes specifications, equipment, model availability and prices subject to change without notice. Comparisons to other motor homes are based on the most recent information available.

A Few More Details.



1998 SUNRISE.

IT'S A FEATURE PRESENTATION.

- Select appliances are secured with steel tie-downs, an exclusive Winnebago Industries safety feature. It's not something we're required to do. It just makes sense.
- Interior paneling is laminated with a unique hot melt adhesive proven to resist moisture and delamination.
- The Sunrise vehicles are truly versatile. One example of this is the 3 1/4" thick roof, which has an R factor of 14.62. The roof's one-piece fiberglass outer skin adds structural integrity, doesn't expand and contract like rubber membranes, and is far more durable. This design is so strong, it's backed by a 10-year parts and labor limited warranty.
- To maintain the highest quality, Winnebago Industries manufactures more than 80% of the components found in the Sunrise series. All components which aren't manufactured by Winnebago Industries must pass a series of stringent quality control tests before being specified for use in our motor homes.
- Safety features include pantograph windshield wipers for better cleaning, center brake light and an available Videoman® rearview monitor with audio feature on several models.
- Our popular exterior entertainment center includes a pull-out table, AM/FM cassette with auto reverse or an available AM/FM/CD player.
- Superior warranty coverage:
 - Transferable 12 month/15,000 mile limited warranty
 - 36 month/36,000 mile Customer First limited warranty
 - 1 year toll-free road assistance through Preferred Care
 - 10 year roof material limited warranty - parts and labor

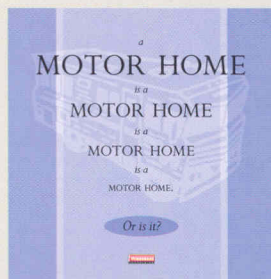
Winnebago Industries has been designated a "Qualified Vehicle Modifier" by Ford Motor Company. The QVM program promotes high standards for manufacturers who build motor homes on Ford chassis, and we are proud to be one of the first motor home manufacturers to qualify. Meeting QVM standards is a part of our policy of continuous quality improvement.



We're on the Web at: www.winnebagoind.com

CONSIDER IT AN ADVANCED EDUCATION IN MOTOR HOMES.

There's much more to buying a motor home than simply finding one with comfortable furniture and inviting interior fabrics (although those things are important). In fact, we recommend people spend as much time examining the motor home's "unseen" features as they do looking over the interior appointments. For instance, there's a great deal you can learn about how well a motor home is constructed by simply looking inside the storage compartments.



To help make your buying decision easier, we've put together a new user-friendly guide which lists the most important things you should be looking for in a motor home, no matter what make or model it is. "The Guide" also highlights the importance of meeting (and exceeding) industry standards, explains Winnebago Industries' one-of-a-kind construction process and details our industry-leading warranty and care programs. So ask for "The Guide" the next time you visit your Winnebago Industries dealer. This "advanced education" will definitely pay off down the road.

For Sales and Service Information Contact:



©1997 Winnebago Industries, Inc.

Printed in USA

Seat belts are your most important hookup. Always buckle up.