

1 9 9 8 S P I R I T<sup>®</sup>

 **ITASCA.**



29W0

# For every need

Every RVer is different. Some are interested in weekend vacations, some in cross-country touring, others in full-time motorhoming. But no matter what your individual needs are, you'll find the perfect solution in an Itasca Spirit. Each of Spirit's six models, including the new 31WT with slideout, offers an impressive array of standard features, along with unsurpassed design, construction strength, fit and finish, and warranty coverage. And every 1998 Spirit is a widebody, meaning there's even more Spirit to enjoy. Combine this with an extremely reasonable price and you can see why Spirit is one of the best motor home values on the road today. Now all you need to do is check out the Class C motor home that satisfies all classes of travelers.



29W0

Spirit interiors are equipped with amenities like custom crafted furniture, deep overhead cabinets with new door styling and large picture windows with available day/nighter shades. The 31WT slideout increases the floor space in both the living area and the galley, and uses our revolutionary **STOR:MORE** Slideout System which overcomes the perception of having to sacrifice storage space to accommodate a slide room. A galley overhead TV is another unique feature of the new 31WT.



31WT

# there's a Spirit.



31WU

The automotive-supplied cab and chassis provide the driver with familiar surroundings for the most comfortable driving experience. Itasca adds to your driving comfort by equipping all Spirit models with a unique recessed area over the cab that not only offers the driver superior field of vision, but also increases interior space in the overhead compartment.



Our efficient galley offers plenty of counter and cabinet space and can include a double-door refrigerator, 3-burner range with oven, touch control microwave, double sink, vinyl floor and built-in spice rack (spice rack on 29WQ only). New for 1998, you'll find a raised panel cabinet door and single control galley faucet upgrade package.

Floorplan configurations with bedrooms include a comfortable mattress, roomy overhead cabinets, beautifully coordinated window treatments, bedspread, pillows and pillow shams.

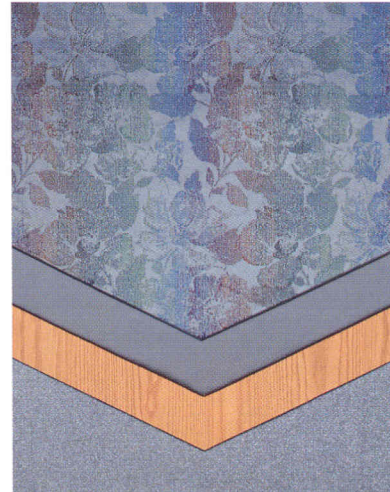


31WU

## SPIRIT DECOR OPTIONS

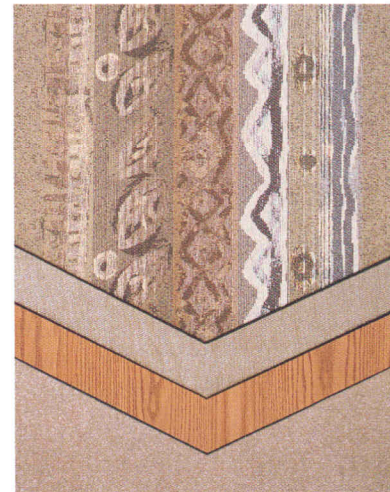
All fabrics selected for use in the Spirit must pass a series of tests to ensure strength and durability. Just one example is the double rub test, which mechanically simulates a person getting in and out of a seat up to 30,000 times to test how the fabrics will wear.

### NEWPORT with Waterford Oak



Main  
Accent  
Wood  
Carpet

### DUNE with Waterford Oak



Main  
Accent  
Wood  
Carpet

Our team of professional interior designers pride themselves on selecting color schemes and patterns that will look good for years to come.

# Another strong reason

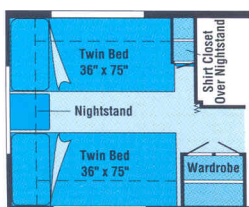


31WT

Thanks to our revolutionary StoreMore Slideout System you don't have to sacrifice interior or exterior storage space when you purchase the new Spirit 31WT slideout. Inside and out, you'll find storage compartments that extend with the slide room to provide easily accessible compartments that hold a surprising amount of gear.

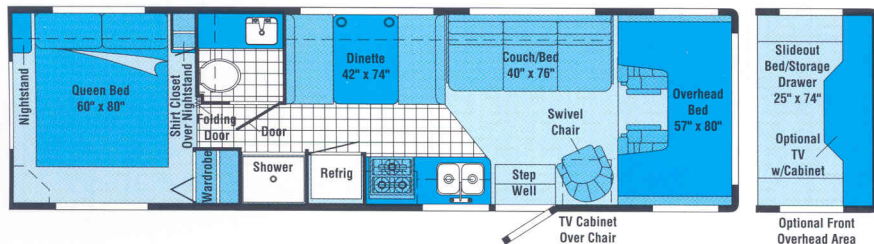
While our smooth, one-piece fiberglass Thermo-Panel® exterior is certainly good looking, the advantages of its design go far beyond mere aesthetics. The outer skin is laminated to a rigid lauan backing material. A layer of block foam insulation is applied over the backing material. The insulation is

then routed – using laser alignment for absolute precision – to embed the full welded aluminum framework, providing continuous insulation around the aluminum without holes or voids. The result is one of the most durable, rigid sidewall constructions in the industry.



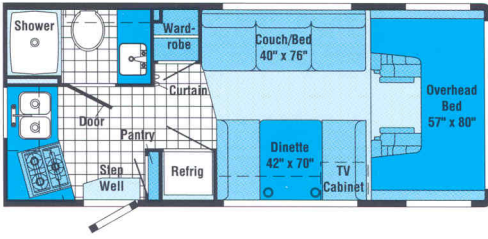
31WU

Includes a large living area, full-sized dinette and the choice of a queen or twin beds in the bedroom. Class A style in an affordable Class C. Overhead entertainment center available in place of overhead bed.



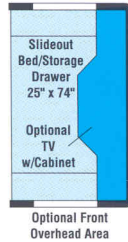
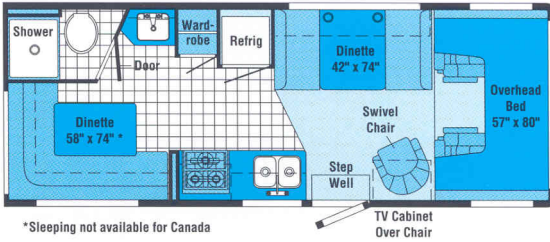
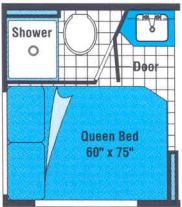
on to travel with us.

## 1998 SPIRIT FLOORPLANS



22WK

Features an efficient rear galley, adding seating and sleeping space in the living area.



\*Sleeping not available for Canada

Optional Front Overhead Area

### NEW 24WD

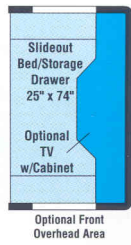
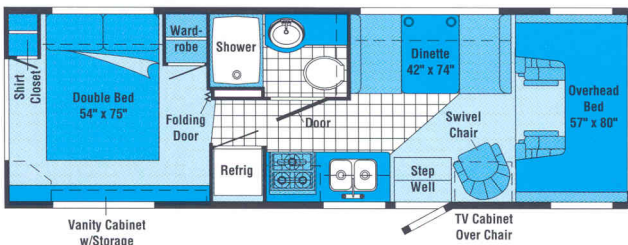
Includes a large corner dinette or queen bed and the choice of a dinette or couch/bed in the living area. Overhead entertainment center available in place of overhead bed.



### NEW 27WP

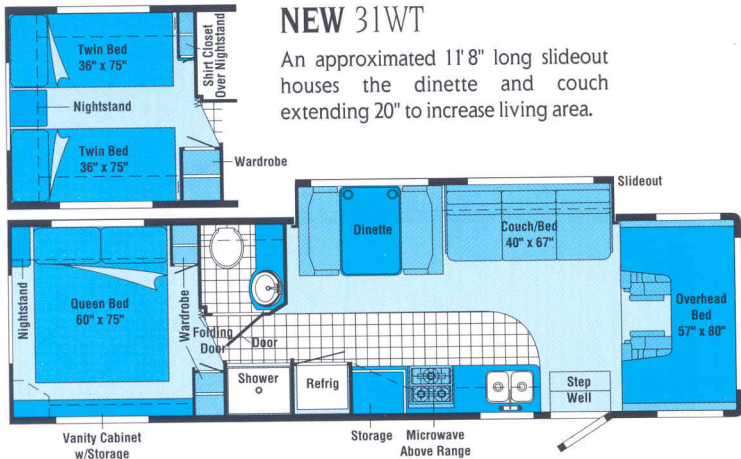
(Available January 1998)

This roomy floorplan includes either a double bed or twin beds. Overhead entertainment center available in place of overhead bed.



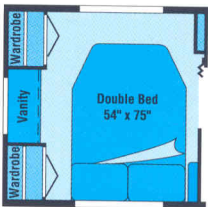
## NEW 31WT

An approximated 11' 8" long slideout houses the dinette and couch extending 20" to increase living area.



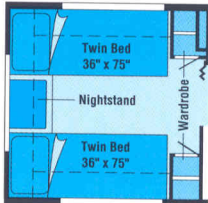
Standard  
Vinyl Flooring

Note: Dimensions shown are for sleeping space only and dashed lines denote overhead storage areas.

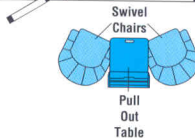
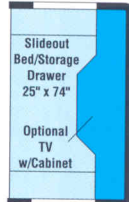
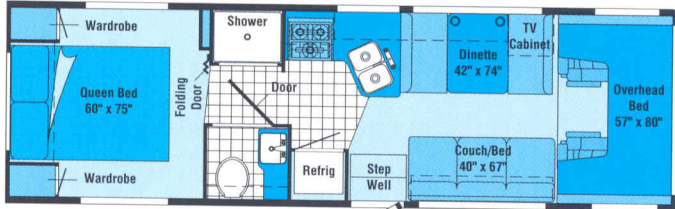
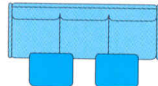


29WQ

Offers a unique angled galley and several possible configurations in the living area and bedroom. Overhead entertainment center available in place of overhead bed.



Couch/Bed w/2 Tables 40\"/>



Optional Front Overhead Area

# 1998 Spirit Specifications

|   | 22WK           | 24WD           | 27WP▲              | 29WQ               | 31WU               | 31WT           |
|---|----------------|----------------|--------------------|--------------------|--------------------|----------------|
| <b>Length - Ford/Chev</b>                 | 22'1"/22'6"    | 24'6"/24'11"   | 27'27"5"           | 29'4"/NA           | 31'4"/NA           | 31'4"/NA       |
| <b>Exterior Width</b> △                   | 8'3.9"         | 8'3.9"         | 8'3.9"             | 8'3.9"             | 8'3.9"             | 8'3.9"         |
| <b>Interior Height</b>                    | 6'11"          | 6'11"          | 6'7"               | 6'7"               | 6'7"               | 6'7"           |
| <b>Interior Width</b>                     | 8'             | 8'             | 8'                 | 8'                 | 8'                 | 8'             |
| <b>Fuel Cap. - Ford/Chev/Diesel</b>       | 37/35/NA gal.  | 55/55/NA gal.  | 55/55/55 gal.      | 55/NA/55 gal.      | 55/NA/55 gal.      | 55/NA/55 gal.  |
| <b>Fresh Water Capacity w/Heater</b>      | 36 gal.        | 46 gal.        | 39 gal.            | 37 gal.            | 42 gal.            | 37 gal.        |
| <b>Holding Tank Capacity - Black/Gray</b> | 30/36 gal.     | 30/36 gal.     | 34/42 gal.         | 27/40 gal.         | 40/32 gal.         | 34/32 gal.     |
| <b>LP Capacity</b> ◇                      | 12 gal.        | 12 gal.        | 12 gal.            | 12 gal.            | 18 gal.            | 18 gal.        |
| <b>Wheelbase - Ford/Chev</b>              | 138"/139"      | 158"/159"      | 188"/189"          | 190"/NA            | 205"/NA            | 220"/NA        |
| <b>Ext. Ht. w/AC - Ford*/Chev*</b>        | 10'9"/11'1"    | 10'8"/10'11"   | 10'9"/10'8"        | 10'9"/NA           | 10'9"/NA           | 10'10"/NA      |
| <b>Exterior Storage</b>                   | 10.8 cu. ft.   | 26.9 cu. ft.   | 48 cu. ft.         | 61.3 cu. ft.       | 52.9 cu. ft.       | 52 cu. ft.     |
| <b>GVWR - Ford/Ford Diesel</b>            | 10,700 lbs./NA | 11,500 lbs./NA | 14,050/14,050 lbs. | 14,050/14,050 lbs. | 14,050/14,050 lbs. | 14,050 lbs./NA |
| <b>GVWR - Chev</b>                        | 12,300 lbs.    | 12,300 lbs.    | 12,300 lbs.        | NA                 | NA                 | NA             |

## AUTOMOTIVE

|  | 22WK | 24WD | 27WP | 29WQ | 31WU | 31WT |
|--|------|------|------|------|------|------|
| <b>Chassis - Chevrolet</b> 7.4L Vortec Engine, 124-Amp. Alternator, Anti-Lock Brake System   | 0    | 0    | S    |      |      |      |
| <b>Chassis - Ford</b> Super-Duty 6.8L V-10 Triton Engine, 130-Amp. Alternator, Dual Air Bags, Anti-Lock Brake System (NA 29WQ, 31WU, 31WT) | S    | S    | 0    | S    | S    | S    |
| <b>Engine*</b> Navistar Diesel, Ford   |      |      | 0    | 0    | 0    |      |

## DRIVER CONVENIENCES

|  | 22WK | 24WD | 27WP | 29WQ | 31WU | 31WT |
|--|------|------|------|------|------|------|
| <b>Battery Charge Control</b> Dual, Automatic  | S    | S    | S    | S    | S    | S    |
| <b>Battery Disconnect System</b>   | S    | S    | S    | S    | S    | S    |
| <b>Beverage Holder</b> Chassis Supplied (Ford)   | S    | S    | S    | S    | S    | S    |
| <b>Cab Seats w/3-Point Retracting Seat Belts</b><br>Armrest, Slide Pedestal, Recline, Lumbar Support | S    | S    | S    | S    | S    | S    |
| <b>Cigarette Lighter/12-V Electrical Supply</b>  | S    | S    | S    | S    | S    | S    |
| <b>Cruise Control</b>  | S    | S    | S    | S    | S    | S    |
| <b>Divider Curtain</b> Cab   | S    | S    | S    | S    | S    | S    |
| <b>Dome Light</b>  | S    | S    | S    | S    | S    | S    |
| <b>Floor Mats</b>  | S    | S    | S    | S    | S    | S    |
| <b>Heating/Air Conditioning</b> Auto. Blend Air  | S    | S    | S    | S    | S    | S    |
| <b>Hood Release</b> Interior   | S    | S    | S    | S    | S    | S    |
| <b>Power Door Locks &amp; Windows*</b>   | 0    | 0    | 0    | 0    | 0    | 0    |
| <b>Start Circuit</b> Auxiliary   | S    | S    | S    | S    | S    | S    |
| <b>Steering</b> Power Assisted w/Tilt Wheel  | S    | S    | S    | S    | S    | S    |
| <b>Sunvisors</b>   | S    | S    | S    | S    | S    | S    |
| <b>Windshield Wipers</b> (Intermittent)  | S    | S    | S    | S    | S    | S    |

## ENTERTAINMENT

|  | 22WK | 24WD | 27WP | 29WQ | 31WU | 31WT |
|--|------|------|------|------|------|------|
| <b>Entertainment Center (Patio)*</b> DC Receptacle, 110-V Outlet, TV Jack, Radio Antenna, AM/FM Cassette Radio, Speakers (2), Removable TV Table, Locking Door | 0    | 0    | 0    | 0    | 0    | 0    |
| <b>Inverter*</b> 130-Watt for TV/VCR   |      | 0    | 0    | 0    | 0    | 0    |
| <b>Stereo (Cab)</b> AM/FM/Cassette Deck, Speakers (4)  | S    | S    | S    | S    | S    | S    |
| <b>TV Enhancement Package</b> Antenna (Amplified), 12-V, Interior Jack(s), Coax Wiring, Cable Input, (27WP, 29WQ, 31WU Include Bedroom TV Shelf or Stand*)     | S    | S    | S    | S    | S    | S    |
| <b>TV* Front (19" Color) &amp; VCR w/Remote</b><br>Switching System, w/Slideout Single Bunk  |      | 0    | 0    | 0    | 0    |      |
| <b>TV* (19" Color) &amp; VCR w/Remote</b> Switching System (Galley)  |      |      |      |      |      | 0    |

|   | 22WK | 24WD | 27WP | 29WQ | 31WU | 31WT |
|---|------|------|------|------|------|------|
| <b>TV* Front (19" Color) w/Remote</b><br>w/Slideout Single Bunk, Switching System         |      | 0    | 0    | 0    | 0    |      |
| <b>TV* (19" Color) w/Remote</b> Switching System (Galley)                                 |      |      |      |      |      | 0    |
| <b>TV* Front - Side (13" Color) &amp; VCP</b><br>w/Remote & Locking Slideout/Swivel Shelf | 0    | 0    | 0    | 0    | 0    |      |

## SLIDEOUT

|   | 22WK | 24WD | 27WP | 29WQ | 31WU | 31WT |
|---|------|------|------|------|------|------|
| <b>Slideout Room</b> Approximately 11'4" Long w/20" Extension |      |      |      |      |      | S    |

## INTERIOR

|  | 22WK | 24WD | 27WP | 29WQ | 31WU | 31WT |
|--|------|------|------|------|------|------|
| <b>Bed (Front Overhead)</b> Sliding Side Windows, Privacy Curtain, Storage Cabinets  | S    | S    | S    | S    | S    | S    |
| <b>Carpeting w/Pad</b> Stain Resistant   | S    | S    | S    | S    | S    | S    |
| <b>Ceiling Lights</b>  | S    | S    | S    | S    | S    | S    |
| <b>Ceiling Vent</b> Bedroom  |      |      | S    | S    | S    | S    |
| <b>Ceiling Vent</b> Powered, Bathroom  | S    | S    | S    | S    | S    | S    |
| <b>Ceiling Vents*</b> Front Bed & Galley   | S    | S    | S    | S    | S    | S    |
| <b>Color Themes (Interior)</b> Choice of Newport (Blue), Dune (Brown)                | S    | S    | S    | S    | S    | S    |
| <b>Courtesy Light(s)</b>   | S    | S    | S    | S    | S    | S    |
| <b>Ladder (Front Overhead Bunk)</b>  |      |      |      |      |      | S    |
| <b>Upgrade</b> Overhead Cabinet Door Style & Single Control Galley Faucet            | 0    | 0    | 0    | 0    | 0    | 0    |
| <b>Wardrobe</b> Carpeted Shelf, Clothes Rod, Wood-Frame Mirrored Door (Drawers 27WP) | S    | S    | S    | S    | S    | S    |
| <b>Window Day/Night Blinds</b> Lounge & Bedroom                                      | 0    | 0    | 0    | 0    | 0    | 0    |
| <b>Windows*</b> Dual Glazed, Thermo-Insulated, Tinted                                | 0    | 0    | 0    | 0    | 0    | 0    |
| <b>Windows</b>   | S    | S    | S    | S    | S    | S    |

## GALLEY

|  | 22WK | 24WD | 27WP | 29WQ | 31WU | 31WT |
|--|------|------|------|------|------|------|
| <b>Flooring (Vinyl)</b>                                | S    | S    | S    | S    | S    | S    |
| <b>Hinged Dinette Seat Back</b>                        | S    | S    | S    | S    |      |      |
| <b>Microwave Oven</b> Touch Control                    | S    | S    | S    | S    | S    | S    |
| <b>Pantry</b>  | S    |      |      |      |      |      |
| <b>Range Hood</b> Ducted w/Light & Fan                 |      | S    | S    | S    | S    | S    |
| <b>Range Hood</b> w/Light & Fan                        | S    |      |      |      |      |      |
| <b>Range w/Oven</b> 3-Burners                          | S    | S    | S    | S    | S    | S    |
| <b>Refrigerator/Freezer</b> Double-Door, Flush Mounted | 0    | S    | S    | S    | S    | S    |
| <b>Refrigerator/Freezer</b> Single-Door                | S    |      |      |      |      |      |

|  | 22WK | 24WD | 27WP | 29WQ | 31WU | 31WT |
|--|------|------|------|------|------|------|
| <b>Sink (Double)</b> Stainless Steel, w/Cover                          | S    | S    | S    | S    | S    | S    |
| <b>Spice Rack</b>  |      |      |      | S    |      |      |
| <b>Storage</b> below Dinette Seat                                      | S    | S    | S    | S    | S    | S    |
| <b>BEDROOM</b>   |      |      |      |      |      |      |
| <b>Bedsread(s), Pillow Shams, Pillows</b>                              |      | 0    | S    | S    | S    | S    |
| <b>Mattress(es)</b>  |      | 0    | S    | S    | S    | S    |
| <b>Underbed Storage</b>  |      |      |      | S    | S    | S    |
| <b>Vanity Cabinet</b>  |      |      | S    |      |      | S    |
| <b>BATHROOM</b>  |      |      |      |      |      |      |
| <b>Flooring (Vinyl)</b>  | S    | S    | S    | S    | S    | S    |
| <b>Lavatory Cabinet</b>  | S    | S    | S    | S    | S    | S    |
| <b>Medicine Cabinet</b>  | S    | S    | S    | S    | S    | S    |
| <b>Mirror</b> Wall-Mounted   | S    |      | S    | S    | S    | S    |
| <b>Shower</b> Flexible Shower Head                                     | S    | S    |      | S    | S    | S    |
| <b>Shower/Tub</b> Flexible Shower Head                                 |      |      | S    |      |      |      |
| <b>Shower Door</b> Pleated w/Track                                     | S    | S    | S    | S    | S    | S    |
| <b>Shower Light</b>  |      |      | S    | S    | S    | S    |
| <b>Sink</b> Oval   |      |      | S    |      |      | S    |
| <b>Sink</b> Rectangular, Molded Soap Dishes                            | S    | S    |      | S    | S    |      |
| <b>Skylight</b>  |      |      | S    | S    | S    | S    |
| <b>Tissue Holder</b>   | S    | S    | S    | S    | S    | S    |
| <b>Toilet</b> w/Hand Lever   | S    | S    | S    | S    | S    | S    |
| <b>Towel Bar</b>   | S    | S    | S    | S    | S    | S    |
| <b>Towel Rack</b> Built into Bath Door                                 | S    | S    | S    | S    | S    | S    |
| <b>Towel Ring</b>  | S    | S    |      | S    | S    |      |
| <b>EXTERIOR</b>  |      |      |      |      |      |      |
| <b>Assist Handle*</b>  | S    | S    | S    | S    | S    | S    |
| <b>Awning*</b>   | 0    | 0    | 0    | 0    | 0    | 0    |
| <b>Awning Rail*</b>  | S    | S    | S    | S    | S    | S    |
| <b>Bumper</b> Front: Steel, Chrome Plated                              | S    | S    | S    | S    | S    | S    |
| <b>Entrance Door Step</b>  | S    | S    | S    | S    | S    | S    |
| <b>Entrance Door w/Screen Door</b> Deadbolt Lock                       | S    | S    | S    | S    | S    | S    |
| <b>Graphics</b>  | S    | S    | S    | S    | S    | S    |
| <b>Ladder</b>  | S    | S    | S    | S    | S    | S    |
| <b>Mirrors (Rear View)</b> w/Convex on Both Sides                      | S    | S    | S    | S    | S    | S    |
| <b>Mud Flaps</b> Rear  | S    | S    | S    | S    | S    | S    |
| <b>Outlet</b> 110-V, Curbside  | S    | S    | S    | S    | S    | S    |
| <b>Porch Light</b> Interior Switch                                     | S    | S    | S    | S    | S    | S    |
| <b>Running Boards (Aluminum)</b>                                       | S    | S    | S    | S    | S    | S    |
| <b>Sewer Hose</b> w/Storage  | S    | S    | S    | S    | S    | S    |
| <b>Storage Compartments</b> E-Coated Steel, Locking Doors, Floor Liner | S    | S    | S    | S    | S    | S    |
| <b>Tire (Spare)</b>  | 0    | 0    | 0    | 0    | 0    | 0    |
| <b>Tire Tool</b> Lug Wrench  | S    | S    | S    | S    | S    | S    |
| <b>Tires (Radial)</b>  | S    | S    | S    | S    | S    | S    |
| <b>Trailer Towing Package</b> w/Class II Hitch                         | 0    | 0    | 0    | 0    | 0    | 0    |
| <b>Trailer Wiring Extension</b>  | S    | S    | S    | S    | S    | S    |
| <b>Wash Station</b>  | 0    | 0    | 0    | 0    | 0    | 0    |
| <b>Water Fill Door</b> Lockable  | S    | S    | S    | S    | S    | S    |
| <b>Wheel Covers</b> Stainless Steel                                    | S    | S    | S    | S    | S    | S    |
| <b>Wheel Liners*</b> Stainless Steel                                   | 0    | 0    | 0    | 0    | 0    | 0    |

|  | 22WK | 24WD | 27WP | 29WQ | 31WU | 31WT |
|--|------|------|------|------|------|------|
| <b>SYSTEMS</b>   |      |      |      |      |      |      |
| <b>2 Batteries*</b> Deep Cycle (Maintenance Free)  | 0    | 0    | 0    | 0    | 0    | 0    |
| <b>Air Conditioning Pre-Wiring</b> Roof  | S    | S    | S    | S    | S    | S    |
| <b>Air Conditioner</b> Roof, 13,500-BTU  | 0    | 0    | 0    | 0    |      |      |
| <b>Air Conditioner</b> Roof, 14,800-BTU  |      |      |      |      | 0    | 0    |
| <b>Battery</b> Deep Cycle  | S    | S    | S    | S    | S    | S    |
| <b>City Water Hook-Up</b>  | S    | S    | S    | S    | S    | S    |
| <b>Electrical Control Center</b> Automotive DC Fuses, AC Breakers, 9-Amp. Battery Charger/32-Amp. Converter, (45-Amp. Converter 31WU & 31WT) | S    | S    | S    | S    | S    | S    |
| <b>Furnace</b> Ducted, Low Profile, 25,000-BTU   | S    | S    |      |      |      |      |
| <b>Furnace</b> Ducted, Low Profile, 30,000-BTU   |      |      | S    | S    | S    | S    |
| <b>Generator*</b> 3,600-Watt, 110-V Wiring, Switches, LP, Requires Diesel Engine Option  |      |      | 0    | 0    | 0    | 0    |
| <b>Generator*</b> 4,000-Watt, 110-V Wiring, Switches, Gas  | 0    | 0    | 0    | 0    | 0    | 0    |
| <b>Generator Hourmeter Gauge, Generator Start/Stop Switch</b> on Range Hood (Available Only When Generator is Ordered)                       | 0    | 0    | 0    | 0    | 0    | 0    |
| <b>Generator Prep Kit*</b> Gas Line, 12-V Wiring (Gas Line NA w/Diesel Engine)   | S    | S    | S    | S    | S    | S    |
| <b>Monitor Panel</b> Water, Holding & LP Tank Levels, Battery Condition Gauge, Water Pump Switch, Located on Galley Wall                     | S    | S    | S    | S    | S    | S    |
| <b>Power Cord</b> 30-Amp., 25 Feet Long  | S    | S    | S    | S    | S    | S    |
| <b>Water Drain System</b> through Floor  | S    | S    | S    | S    | S    | S    |
| <b>Water Heater</b> 6-Gal., Electronic Ignition  | S    | S    | S    | S    | S    | S    |
| <b>Water Heater Winterization By-Pass Valve</b>  | S    | S    | S    | S    | S    | S    |
| <b>Water Line Winterization Valve</b>  | S    | S    | S    | S    | S    | S    |
| <b>Water Pump (Demand)</b>   | S    | S    | S    | S    | S    | S    |
| <b>SAFETY</b>  |      |      |      |      |      |      |
| <b>3-Point Cab Seat Belts</b>  | S    | S    | S    | S    | S    | S    |
| <b>Assist Strap</b> Interior   | S    | S    | S    | S    | S    | S    |
| <b>Carbon Monoxide Detector/Alarm</b>  | S    | S    | S    | S    | S    | S    |
| <b>Escape Window</b>   |      | S    | S    | S    | S    | S    |
| <b>Fire Extinguisher (10-B.C.)</b>   | S    | S    | S    | S    | S    | S    |
| <b>Ground Fault Interrupter</b>  | S    | S    | S    | S    | S    | S    |
| <b>High-Mount Brake Light</b>  | S    | S    | S    | S    | S    | S    |
| <b>Lap Belts</b> in Selected Areas   | S    | S    | S    | S    | S    | S    |
| <b>LPG Leak Detector/Alarm</b>   | S    | S    | S    | S    | S    | S    |
| <b>Smoke Detector/Alarm</b>  | S    | S    | S    | S    | S    | S    |

▲ Available January 1998

△ The Spirit floorplans feature a widebody design — over 96". In making your purchase decision, you should be aware that some states restrict access on some or all state roads to 96" in body width. Before making your purchase decision, you should confirm the road usage laws in the states of interest to you.

◇ Capacities shown are tank manufacturer's listed water capacity (W.C.). Actual filled LP capacity is 80% of listing due to safety shut-off required on tank.

• The height of each model is based on the curb weight of a typically equipped unit on the standard chassis. The actual height of your vehicle may vary by as much as 2" depending on chassis or equipment variations.

S Standard

0 Optional

\* Not all options available in combination. See dealer for details.

Winnebago Industries' continuing program of product improvement makes specifications, equipment, model availability and prices subject to change without notice. Comparisons to other motor homes are based on the most recent information available.

# A Few More Details.



31111

## 1998 SPIRIT. IT'S A FEATURE PRESENTATION.

- Select appliances are secured with steel tie-downs, an exclusive Winnebago Industries safety feature. It's not something we're required to do. It just makes sense.
- Interior paneling is laminated with a unique hot melt adhesive proven to resist moisture and delamination.
- Low profile driver and passenger doors provide easier entrances and exits.
- Superior insulation, available dual-pane windows and sensible placement of the fresh water tanks and lines above floor level provide enjoyment all year. The one-piece fiberglass roof adds structural integrity, doesn't expand or contract like rubber membranes, and is far more durable.
- Floor is 4" higher on all models 27' and longer to allow for taller storage compartments.
- Superior Warranty Coverage:
  - Transferable 12 month/15,000 mile limited warranty.
  - 36 month/36,000 mile Customer First limited warranty.
  - 1 year toll-free road assistance through Preferred Care.
  - 10 year roof material limited warranty - parts and labor.

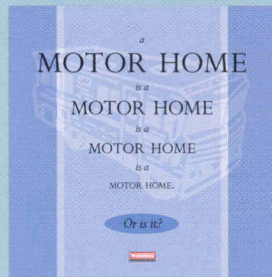
Winnebago Industries has been designated a "Qualified Vehicle Modifier" by Ford Motor Company. The QVM program promotes high standards for manufacturers who build motor homes on Ford chassis, and we are proud to be one of the first motor home manufacturers to qualify. Meeting QVM standards is a part of our policy of continuous quality improvement.



We're on the Web at: [www.winnebagoind.com](http://www.winnebagoind.com)

## CONSIDER IT AN ADVANCED EDUCATION IN MOTOR HOMES.

There's much more to buying a motor home than simply finding one with comfortable furniture and inviting interior fabrics (although those things are important). In fact, we recommend people spend as much time examining the motor home's "unseen" features as they do looking over the interior appointments. For instance, there's a great deal you can learn about how well a motor home is constructed by simply looking inside the storage compartments.



To help make your buying decision easier, we've put together a new user-friendly guide which lists the most important things you should be looking for in a

motor home, no matter what make or model it is. "The Guide" also highlights the importance of meeting (and exceeding) industry standards, explains Winnebago Industries' one-of-a-kind construction process and details our industry-leading warranty and care programs. So ask for "The Guide" the next time you visit your Winnebago Industries dealer. This "advanced education" will definitely pay off down the road.

*For Sales and Service Information Contact:*



©1997 Winnebago Industries, Inc.

Printed in USA

Seat belts are your most important hookup. Always buckle up.