

1998

MINNIE WINNIE®





# 1998 MINNIE WINNIE

Step into our Widebody  
Minnie Winnie and experience  
an entirely new attitude toward  
Class C luxury.

This year's widebody Minnie Winnie is designed with a wealth of new floorplan options, an enormous amount of living space and enough heated basement storage to make you forget you're in a Class C. One of the most exciting additions is our bedroom rear slideout. Its space-conscious design allows for extra living room throughout the rest of the coach. Clearly superior to other motor homes in its class, the Minnie Winnie starts with a strict set of construction standards that would make other assemblers cringe. It continues with a generous collection of features, skillfully designed to exceed Class C expectations. Like a GE TV/VCR option in the front entertainment center. And available ducted roof air conditioning. Best of all, it ends with a price that'll keep your wallet in working order.



**31WS** From the spacious dinette to our new rear slideout, calling it an open floorplan is an understatement. Upgraded fabrics, carpet and interior furnishings complete the picture, for a Class C motor home with a Class A feel.



**31WS-DL** Thanks to its widebody floorplan and new bedroom rear slideout, this redesigned lounge accommodates a lengthy sofa, swiveling chair and dinette with a roomy Class A feel.





**29WU-DL** Our innovative L-shaped sofa converts into a bed. Cherry wood cabinetry creates a homey interior for relaxing or entertaining.



**31WS** The in-line galley makes cooking a pleasure, with conveniences like an available overhead coffeemaker and extra-deep sink.



**31WS-DL** This new floorplan features a unique slideout bedroom that extends out the rear of the unit, and a cross-coach queen bed. You'll appreciate the extra comforts packed into this 31-foot unit.



**29WU-DL** The bathroom features a pleated fabric shower door and a combination shower/tub. The 2-shelf linen cabinet and recessed towel racks help you keep the area clutter-free.



**31WQ** Every model features plenty of heated basement storage for all-season use, and an available outside entertainment center to make pleasant weather even more enjoyable.



# 1998 MINNIE WINNIE SPECIFICATIONS

1998 MINNIE WINNIE	29WQ	29WU	31WQ	31WS
Length	29'4"	29'4"	30'10"	30'10"
Wheelbase	190"	190"	205"	205"
Fuel Capacity	55 gal.	55 gal.	55 gal.	55 gal.
Fresh Water Capacity w/Heater	37 gal.	37 gal.	37 gal.	41 gal.
Holding Tank Capacity - Black/Gray	34/31 gal.	34/31 gal.	34/31 gal.	32/36 gal.
LP Capacity <sup>∅</sup>	18 gal.	18 gal.	18 gal.	18 gal.
Exterior Height w/Roof Air <sup>t</sup>	11'4"	11'4"	11'4"	11'4"
Exterior Width <sup>∆</sup>	8'3.9"	8'3.9"	8'3.9"	8'3.9"
Interior Height	6'7"	6'7"	6'7"	6'7"
Interior Width	8'	8'	8'	8'
Exterior Storage (Std.)	83.0 cu. ft.	83.6 cu. ft.	96.9 cu. ft.	94.3 cu. ft.
GVWR	14,050 lbs.	14,050 lbs.	14,050 lbs.	14,050 lbs.

	29WQ	29WU	31WQ	31WS
S Standard				
O Optional				
<b>AUTOMOTIVE</b>				
Chassis - Ford 6.8L Triton V10 at 265 HP, 130-amp alternator, height sensing brake proportioning valve (14,050 GVWR), driver and passenger airbag	S	S	S	S
Engine* - 7.3L Power Stroke Turbo Diesel V8 at 215 HP	O	O		
Tires & spare (radial)	S	S	S	S
<b>DL UPGRADE PACKAGE</b>				
Deluxe upgrade package* Exterior - wheel liners, automotive rear bumper, radius transition panel, additional graphics & paint, fiberglass running boards w/wheel well trim, electric mirrors w/defrost Interior - deluxe cab seats, adjustable reading lights, raised panel cabinet doors stile & rail (overhead), upgraded wall lamps, day/nighter pleated blinds, upgraded furniture style, lounge pillow (couch module), black galley appliances, upgraded convenience tray	O	O	O	O
<b>DRIVER CONVENIENCES</b>				
3-point retracting seat belts (drv./frt. pass.) - seats w/single armrest, recline, slide pedestal, lumbar support	S	S	S	S
Battery charge control - dual, automatic	S	S	S	S
Beverage holder, cab carpet & rubber floor mats	S	S	S	S
Cigarette lighter/12-V electrical supply	S	S	S	S
Convenience tray	S	S	S	S
Cruise control	S	S	S	S
Divider curtain - cab	S	S	S	S
Dome light	S	S	S	S
Heating/air conditioning - automotive blend air system	S	S	S	S
Hood release - interior	S	S	S	S
Mirrors (rear view) - exterior, plate mount w/convex	S	S	S	S
Mirrors (rear view)* - exterior, electric remote w/defrost	O	O	O	O
Power door locks & windows	O	O	O	O
Start circuit - auxiliary	S	S	S	S
Steering - power assisted w/tilt wheel	S	S	S	S
Sunvisors	S	S	S	S
Trim panels - driver & passenger doors (chassis supplied)	S	S	S	S

	29WQ	29WU	31WQ	31WS
S Standard				
O Optional				
Windshield wipers (intermittent)	S	S	S	S
<b>ENTERTAINMENT</b>				
Entertainment center (patio) - AM/FM radio, cassette deck, speakers (2), DC receptacle, 110-V outlet, TV jack, radio antenna, removable TV table, locking door	O	O	O	O
Inverter* - 110-V for TV/VCR, 130-watt	O	O	O	O
Stereo (cab) - AM/FM cassette deck, speakers (4)	S	S	S	S
TV, lounge (13" color)* & VCR w/remote, 12-V - slide/swivel shelf, locking safety latch	O	O	O	O
TV, front (19" color)* & VCR w/remote, switching system, w/slideout single bunk	O	O	O	O
TV, front (19" color)* w/remote, switching system, w/slideout single bunk	O	O	O	O
TV enhancement package* - antenna (amplified), DC receptacles (2), interior jacks (2), coax wiring, cable input, bedroom TV shelf or stand	S	S	S	S
Satellite system pre-wiring	S	S	S	S
Satellite system <sup>∅</sup> - without receiver	O	O	O	O
<b>SLIDEOUT</b>				
Slideout room (backwall) - Queen bed and nightstand move out with the slideout, slideout cover				S
<b>INTERIOR</b>				
Bed (front overhead) - sliding side windows, privacy curtain, storage cabinets	S	S	S	S
Carpeting w/pad - stain resistant	S	S	S	S
Ceiling lights	S	S	S	S
Ceiling vent - powered, bathroom	S	S	S	S
Ceiling ventilator fan - powered, front bunk	O	O	O	O
Ceiling vents* - non-powered, bedroom, front overhead bed & galley	S	S	S	S
Clock - decorator style	S	S	S	S
Color themes (interior) - choice of Monaco (blush), Mink (taupe), both w/Waterford Oak	S	S	S	S
Color themes (interior) DL upgrade - choice of Chameleon (blue), Mercury (blush), both w/Cherry	O	O	O	O
Courtesy lights w/wall switches	S	S	S	S
Decorator lamp	S	S		
Ladder* - overhead bed	O	O	O	O

S Standard  
O Optional

	29WQ	29WU	31WQ	31WS
Wardrobe - carpeted floor, clothes rod, mirrored door(s) (drawer & shelf on 31WQ & 31WS)		S	S	S
Window coverings - day/nighter pleated blinds, lounge and bedroom	O	O	O	O
Windows - tinted, 62% light transmittal	S	S	S	S
Windows - dual glazed, thermo-insulated	O	O	O	
<b>GALLEY</b>				
Coffee maker	O	O	O	O
Counter extension - flip-up	S			
Flooring (vinyl)	S	S	S	S
Folding chairs* (2)			O	
Galley rail	S	S	S	S
Microwave prep kit	S	S	S	S
Microwave oven - touch control	S	S	S	S
Pantry		S	S	S
Range hood - w/light, powered vent	S	S	S	S
Range w/oven - 3 burners, drawer below	S	S	S	S
Refrigerator/freezer - double-door, flush-mounted	S	S	S	S
Sink (double) - stainless steel, single control faucet, recessed w/countertop cover	S	S	S	S
Spice rack	S	S		
Storage - below dinette seats	S	S	S	S
Table & chairs (2)			O	
<b>BEDROOM</b>				
Mattress(es), bedspread(s), pillows, pillow shams	S	S	S	S
Underbed storage - gas spring bed lifts	S	S	S	S
Wardrobe(s)	S	S	S	S
<b>BATHROOM</b>				
Clothes rod - removable	S	S	S	S
Flooring (vinyl)	S	S	S	S
Lavatory cabinet	S	S	S	S
Linen cabinet			S	S
Magazine rack				S
Medicine cabinet	S	S	S	S
Mirror - wall-mounted	S			S
Shower - flexible shower head	S			
Shower/tub - flexible shower head		S	S	S
Shower door - pleated	S	S	S	S
Shower light	S	S	S	S
Sink - rectangular, molded soap dishes	S	S	S	
Sink - oval w/ledge back				S
Skylight	S	S	S	S
Tissue holder	S	S	S	S
Toilet - marine style	S	S	S	S
Towel bar	S			S
Towel rack 3 rods - built into door	S	S	S	S
Towel ring	S	S		
Water pump switch	S	S	S	S
<b>EXTERIOR</b>				
Awning* - patio	O	O	O	O
Awning rail	S	S	S	S
Bumper - front: chrome	S	S	S	S
Entrance door step (electric)	S	S	S	S

S Standard  
O Optional

	29WQ	29WU	31WQ	31WS
Entrance door w/screen door - deadbolt lock	S	S	S	S
Holding tank compartment - heated	S	S	S	S
Ladder	S	S	S	S
Mud flaps - rear	S	S	S	S
Outlet - 110-V, curbside	S	S	S	S
Porch light - interior switch	S	S	S	S
Power cord - 30-amp	S	S	S	S
Running boards (aluminum)	S	S	S	S
Service center - w/cable TV input, city water hookup, drainage valves, exterior wash station w/pump switch, power cord	S	S	S	S
Sewer hose - w/storage	S	S	S	S
Storage compartments - locking doors w/single latch & gas struts	S	S	S	S
Trailer towing package - w/Class II hitch	O	O	O	O
Trailer wiring extension	S	S	S	S
Wheel covers	S	S	S	S
Wheel liners* - stainless steel	O	O	O	O
<b>SYSTEMS</b>				
Air conditioning pre-wiring - roof	S	S	S	S
Air conditioner - roof, 14,800-BTU	O	O	O	O
Battery (auxiliary) - deep cycle	S	S	S	S
Battery disconnect system	S	S	S	S
2 maintenance free batteries*	O	O	O	O
City water hook-up	S	S	S	S
AC/DC electrical distribution system - load center combination, 40-amp converter/charger	S	S	S	S
Furnace - ducted, low profile, 30,000-BTU	S	S	S	S
Generator prep kit* - gas line, 12-V wiring	S	S	S	S
Generator* - 4,000-watt, hourmeter, 110-V wiring, switches, gas	O	O	O	O
Generator* - 3,600-watt, hourmeter, 110-V wiring, switches, LP	O	O		
LP tank - permanent mount w/gauge	S	S	S	S
Monitor panel - water, holding & LP tank levels, battery condition gauge, water pump switch, water heater ignition switch w/pilot indicator light, located in galley	S	S	S	S
Water drain system - through floor	S	S	S	S
Water fill door - lockable	S	S	S	S
Water heater - 6-gal., electronic ignition	S	S	S	S
Water heater (Motoraid) & rear automotive heater	O	O	O	O
Water heater winterizing bypass valve	S	S	S	S
Water pump (demand)	S	S	S	S
Water system winterizing valve	S	S	S	S
<b>SAFETY</b>				
3-point seat belts (drv./frt. pass.)	S	S	S	S
Assist handle* - exterior	S	S	S	S
Assist handle - interior, wood	S		S	S
Assist strap - interior	S	S	S	S
Carbon monoxide detector/alarm	S	S	S	S
Escape window	S	S	S	S
Fire extinguisher (10-B.C.)	S	S	S	S
Ground fault interrupter	S	S	S	S
High mount rear brakelight	S	S	S	S
LP leak detector/alarm	S	S	S	S
Lap belts in selected areas	S	S	S	S
Smoke detector/alarm	S	S	S	S

∠ Capacities shown are tank manufacturer's listed water capacity (W.C.). Actual filled LP capacity is 80% of listing due to safety shut-off required on tank.

† The height of each model is based on the curb weight of a typically equipped unit on the standard chassis. The actual height of your vehicle may vary by as much as 2" depending on chassis or equipment variations.

△ The Minnie Winnie floorplans feature a widebody design - over 96". In making your purchase decision, you should be aware that some states restrict access on some or all state roads to 96" in body width. Before making your purchase decision, you should confirm the road usage laws in the states of interest to you.

\*Not all options available in combination. See dealer for details.

∞TV satellite system options do not include programming activation. Quality reception is available only in the lower 48 states.

Winnebago Industries' continuing program of product improvement makes specifications, equipment, model availability and prices subject to change without notice. Comparisons to other motor homes are based on the most recent information available.

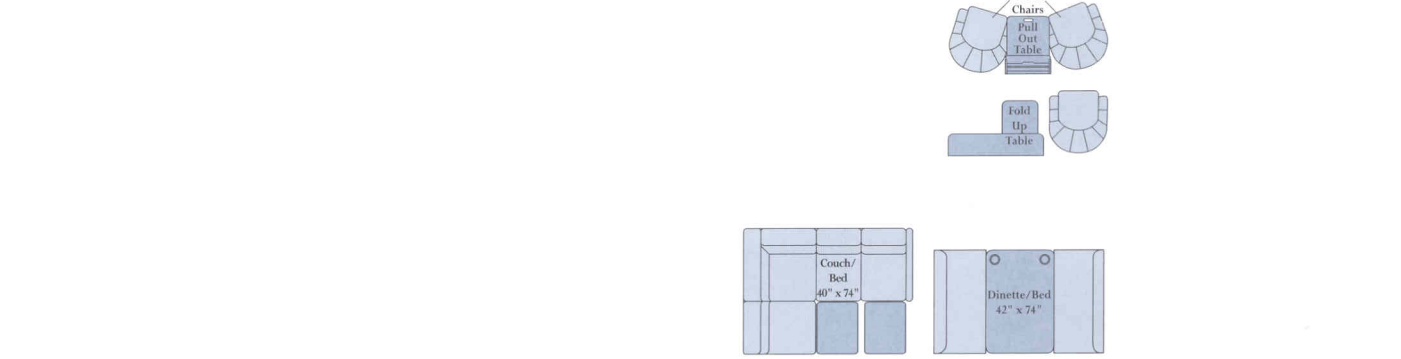


# MORE ROOM, EVERYWHERE YOU LOOK.



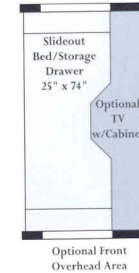
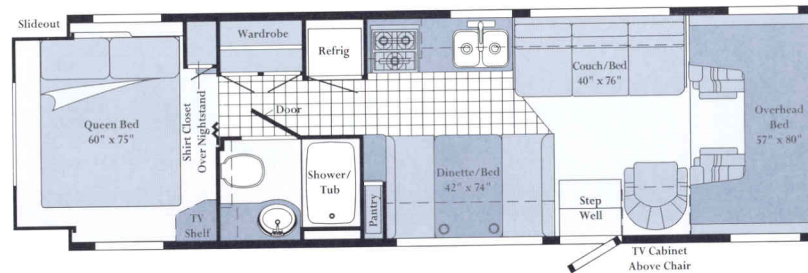
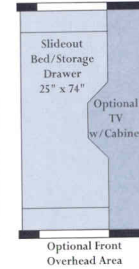
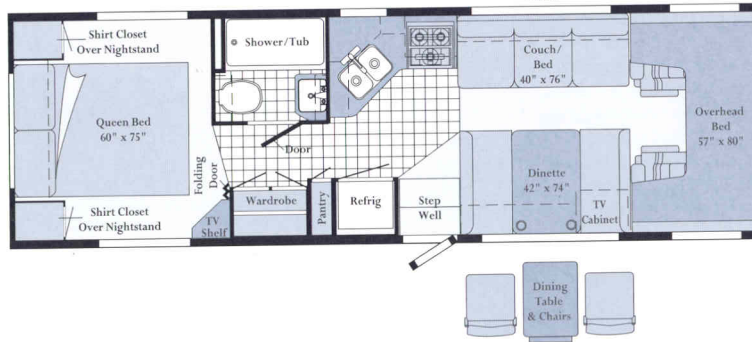
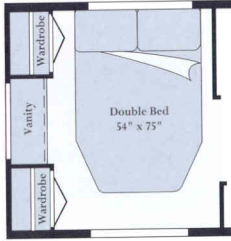
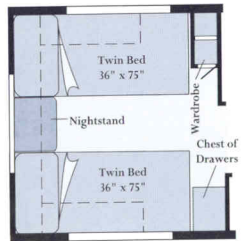
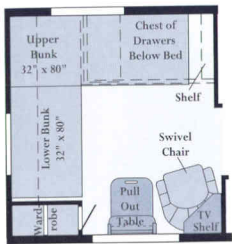
## 29WQ

- Widebody basement design.
- Wider dinette and galley.
- Deeper bathroom.
- Wider bedroom wardrobes.
- Numerous floorplan options.



## 29WU

- Widebody basement design.
- Larger dinette and galley.
- Corner pantry opposite the L-shaped galley.
- Flexible floorplan options.



### 31WQ

- Widebody basement design.
- Roomier lounge, galley and bedroom areas.
- Larger bathroom.
- More storage space in the bedroom.

### 31WS

- New widebody basement design.
- Standard bedroom slideout.
- In-line galley.
- Class C with a Class A feel.



Widebody designs are over 96" wide. Some states restrict access on some or all state roads to 96." You should confirm the road usage laws in the states of interest to you.  
Note: Dimensions shown are for sleeping space only and dashed lines denote overhead storage areas.



*Our high standards made us one of the first motor home manufacturers to earn the title "Qualified Vehicle Modifier," identifying us as a leader among companies who build on Ford chassis.*



Standard Vinyl Flooring

# MINNIE WINNIE INTERIORS

Mink  
with Waterford Oak



Monaco  
with Waterford Oak



Every motor home interior is stitched, constructed, sanded and stained with care in our factory by our own employees. We even perform extensive wear tests to ensure long-lasting durability. This concept is called Home Comfort Design, and it gives us complete control over the fit and finish of the final product. We take great pride in offering you high-quality, handcrafted living spaces to match your lifestyle.

Mercury (DL)  
with Cherry Wood



Chameleon (DL)  
with Cherry Wood



## EXTERIOR VALANCE PANELS



Platinum

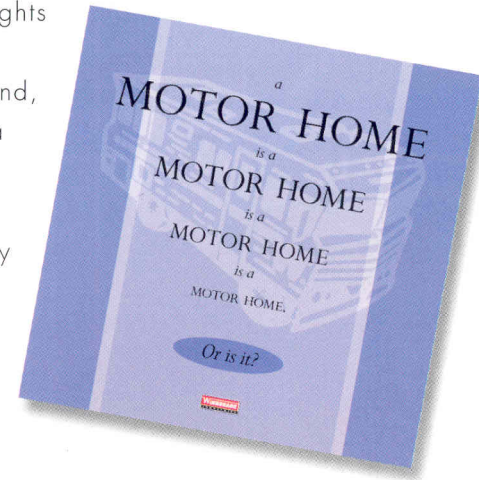


Light Green

This year's exterior lower valance colors are Platinum, suggested with Mercury (DL), and Light Green, suggested with Chameleon (DL). However, you may order either valance color, regardless of your DL interior choice.

Ask for the new Winnebago Industries buyer's guide and discover why all motor homes are not created equal.

The process of buying a motor home can be intimidating, even if you're a veteran. And in a market saturated with flashy first impressions, the true signs of quality are often hard to spot. So this year we put together a user-friendly guide to help you make some educated observations as you compare Winnebago Industries motor homes to the competition. It explains our uniquely superior on-site manufacturing processes, highlights the importance of meeting (and exceeding) industry standards and, best of all, it's free. Use it as a reference tool when shopping around, or familiarize yourself with some key safety and quality considerations. Ask for the guide next time you visit your Winnebago Industries dealer, and upgrade your motor home buying savvy.



Visit us at [www.winnebagoind.com](http://www.winnebagoind.com)

**WINNEBAGO** Built proudly by  
  
 © 1997 Winnebago Industries, Inc. Forest City, IA 50436. Printed in USA.

Seat belts are your most important hookup. Always buckle up.