



1998

MINNIE®



1998 MINNIE

The only news more exciting than our new widebody floorplans is the added features that come with them.

Anyone can add extra living space to a motor home. But to turn heads, you've got to fill it with extra benefits. Which is why our new widebody Minnie floorplans are chock-full of travel-friendly innovations. For starters, feast your eyes on our wider dinette, with elbow room for four (and then some). There's also a wider, deeper shower and more linen cabinet space than ever. And this year marks the debut of our cleverly designed 31WM model, with a dinette and lounge-area slideout room. But perhaps the most enticing feature of this year's Minnie is it offers all the warranty benefits found in our top-of-the-line model, for a price you'd normally expect to pay for a used motor home. All our 1998 Minnie models offer unexpected amenities at an exceptional value. The only thing entry level about them is the price.



31WM This Class C feels just like a Class A, thanks to its dinette/lounge slideout and in-line galley. And our exclusive StoreMore™ Slideout System allows you to enjoy a slideout without sacrificing storage space, inside or out. The new 31WM also includes an available 19" TV and VCR in the galley area.



31WU Higher-quality fabric and carpeting are just a few of the perks that create a living space superior to other entry-level Class C's. We call this attention to detail "Home Comfort Design."



29WQ Whether you need a good night's sleep or just a catnap, our generously sized queen bed is the perfect spot to catch some Z's.



31WU Here's a kitchen that's roomy enough to pass for a Class A. Its in-line design and flip-up counter extension puts every convenience within easy reach. Handcrafted cabinets with available raised panel doors complete the picture.



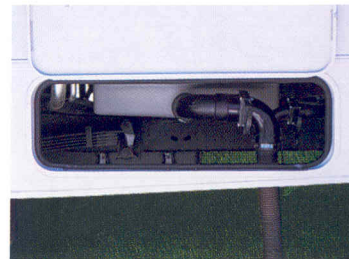
22WK This widebody model offers a carefully designed kitchen with Norcold refrigerator. There's also a TV cabinet with a sturdy tambour door and a locking/swivel TV shelf.



31WU A new frosty white bathroom skylight illuminates the bath area with a flood of natural light.



31WU From lawn chairs to golf clubs, the large pass-through storage compartment makes loading and unloading a breeze.



31WU The access door for dump valves makes emptying tanks quick and simple.

1998 MINNIE SPECIFICATIONS

1998 MINNIE	22WK	22RB	24RC	27WU ^A	29WQ	31WU	31WM
Length - Chevrolet	22'6"	22'6"	24'11"	27'5"	NA	NA	NA
Length - Ford	22'1"	22'1"	24'6"	27'	29'4"	31'4"	31'4"
Exterior Width	8'3.9"	7'10.5"	7'10.5"	8'3.9"	8'3.9"	8'3.9"	8'3.9"
Interior Height	6'11"	6'11"	6'11"	6'7"	6'7"	6'7"	6'7"
Interior Width	8'	7'7"	7'7"	8'	8'	8'	8'
Fuel Capacity - Chevrolet	35 gal.	35 gal.	55 gal.	55 gal.	NA	NA	NA
Fuel Capacity - Ford/Ford Diesel	37 gal./NA	37 gal./NA	55 gal./NA	55 gal./55 gal.	55 gal./55 gal.	55 gal./55 gal.	55 gal./55 gal.
Fresh Water w/Heater	36 gal.	36 gal.	46 gal.	39 gal.	37 gal.	42 gal.	37 gal.
Holding Tank Capacity - Black/Gray	30 gal./36 gal.	36 gal./30 gal.	30 gal./36 gal.	34 gal./42 gal.	27 gal./40 gal.	40 gal./32 gal.	34 gal./32 gal.
LP Capacity [∠]	12 gal.	12 gal.	12 gal.	12 gal.	12 gal.	18 gal.	18 gal.
Wheelbase - Chevrolet	139"	139"	159"	189"	NA	NA	NA
Wheelbase - Ford	138"	138"	158"	188"	190"	205"	220"
Exterior Height w/AC - Chevrolet*	11'1"	11'1"	10'11"	10'8"	NA	NA	NA
Exterior Height w/AC - Ford*	10'9"	10'9"	10'9"	10'9"	10'9"	10'9"	10'10"
Exterior Storage	10.8 cu. ft.	12 cu. ft.	26.7 cu. ft.	48 cu. ft.	61.3 cu. ft.	52.9 cu. ft.	43.8 cu. ft.
GVWR - Chevrolet	12,300 lbs.	12,300 lbs.	12,300 lbs.	12,300 lbs.	NA	NA	NA
GVWR - Ford/Ford Diesel	10,700 lbs./NA	10,700 lbs./NA	11,500 lbs./NA	14,050 lbs./14,050 lbs.	14,050 lbs./14,050 lbs.	14,050 lbs./14,050 lbs.	14,050 lbs./NA

S Standard
O Optional

	22WK	22RB	24RC	27WU	29WQ	31WU	31WM
AUTOMOTIVE							
Chassis - Chevrolet 7.4L Vortec engine, 124-amp. alternator, antilock brake system	O	O	O	S			
Chassis - Ford Super-Duty 6.8L V-10 Triton engine, 130-amp. alternator, dual air bags, antilock brake system (NA-29WQ, 31WU, 31WM)	S	S	S	O	S	S	S
Engine* Navistar diesel, Ford				O	O	O	
DRIVER CONVENIENCES							
Battery charge control - dual, automatic	S	S	S	S	S	S	S
Battery disconnect system	S	S	S	S	S	S	S
Beverage holder - chassis supplied	S	S	S	S	S	S	S
Cab seats w/3-point retracting seat belts - armrest, slide pedestal, recline, lumbar support	S	S	S	S	S	S	S
Cigarette lighter/12-V electrical supply	S	S	S	S	S	S	S
Cruise control	S	S	S	S	S	S	S
Divider curtain - cab	S	S	S	S	S	S	S
Dome light	S	S	S	S	S	S	S
Floor mats	S	S	S	S	S	S	S
Heating/air conditioning - auto. blend air	S	S	S	S	S	S	S
Hood release - interior	S	S	S	S	S	S	S
Power door locks & windows - Ford	O	O	O	O	O	O	O
Start circuit - auxiliary	S	S	S	S	S	S	S
Steering - power assisted w/tilt wheel	S	S	S	S	S	S	S
Sunvisors	S	S	S	S	S	S	S
Windshield wipers (intermittent)	S	S	S	S	S	S	S

S Standard
O Optional

	22WK	22RB	24RC	27WU	29WQ	31WU	31WM
ENTERTAINMENT							
Entertainment center (patio)* - DC receptacle, 110-V outlet, TV jack, radio antenna, AM/FM cassette radio, speakers (2), removable TV table, locking door	O	O	O	O	O	O	O
Inverter* - 130-watt for TV/VCR			O	O	O	O	O
Stereo (cab) - AM/FM/cassette deck, speakers (4)	S	S	S	S	S	S	S
TV enhancement package - antenna (amplified), 12-V, interior jack(s), coax wiring, cable input, (27WU, 29WQ, 31WU includes bedroom TV shelf or stand*)	S	S	S	S	S	S	S
TV* front (19" color) & VCR w/remote, switching system, w/slideout single bunk			O	O	O	O	
TV* (19" color) & VCR w/remote, switching system, w/swivel stand (galley)							O
TV* front (19" color) w/remote, switching system - w/slideout single bunk			O	O	O	O	
TV* (19" color) w/remote, switching system, w/swivel stand (galley)							O
TV* front - side (13" color) & VCP - w/remote & locking slideout/swivel shelf	O	O	O	O	O	O	
SLIDEOUT							
Slideout room (driver's side) - approximately 11'8" long w/20" extension							S
INTERIOR							
Bed (front overhead) - sliding side windows, privacy curtain, storage cabinet	S	S	S	S	S	S	S
Carpeting w/pad - stain resistant	S	S	S	S	S	S	S
Ceiling lights	S	S	S	S	S	S	S
Ceiling vent - bedroom				S	S	S	S
Ceiling vent - powered, bathroom	S	S	S	S	S	S	S

S Standard
O Optional

	22WK	22RB	24RC	27WU	29WQ	31WU	31WM
Ceiling vents* - front bed & galley	S	S	S	S	S	S	S
Color themes (interior) - choice of Gemstone (green), Sandpiper (tan)	S	S	S	S	S	S	S
Courtesy light(s)	S	S	S	S	S	S	S
Interior upgrade - overhead cab door style and single control galley faucet	O	O	O	O	O	O	O
Ladder (front overhead bunk)							S
Wardrobe - carpeted shelf, clothes rod, wood-frame mirrored door (drawers 27WU)	S	S	S	S	S	S	S
Window day/night blinds - lounge & bedroom	O	O	O	O	O	O	O
Windows* - dual-glazed, thermo-insulated, tinted	O	O	O	O	O	O	O
GALLEY							
Flooring (vinyl)	S	S	S	S	S	S	S
Hinged dinette seat back	S	S	S	S	S		
Microwave oven - touch control	S	S	S	S	S	S	S
Pantry	S	S					
Range hood - ducted w/light & fan		S	S	S	S	S	S
Range hood - w/light & fan	S						
Range w/oven - 3-burners	S	S	S	S	S	S	S
Refrigerator/freezer - double door, flush mounted	O	O	S	S	S	S	S
Refrigerator/freezer - single door	S	S					
Sink (double) - stainless steel, w/cover	S	S	S	S	S	S	S
Spice rack					S		
Storage - below dinette seat	S	S	S	S	S	S	S
BEDROOM							
Bedsread(s), pillow shams, pillows			S	S	S	S	S
Mattress(es)			S	S	S	S	S
Underbed storage				S	S	S	S
BATHROOM							
Lavatory cabinet	S	S	S	S	S	S	S
Flooring (vinyl)	S	S	S	S	S	S	S
Medicine cabinet	S	S	S	S	S	S	S
Mirror - wall-mounted	S			S	S	S	S
Shower - flexible shower head	S	S	S		S	S	S
Shower/tub - flexible shower head				S			
Shower door - pleated w/track	S	S	S	S	S	S	S
Shower light				S	S	S	S
Sink - oval				S			S
Sink - rectangular, molded soap dishes	S	S	S		S	S	
Skylight				S	S	S	S
Tissue holder	S	S	S	S	S	S	S
Toilet - w/hand lever	S	S	S	S	S	S	S
Towel bar	S	S	S	S	S	S	S
Towel rack - built into bath door	S	S	S	S	S	S	S
Towel ring	S	S	S		S	S	
EXTERIOR							
Assist handle*	S	S	S	S	S	S	S
Awning*	O	O	O	O	O	O	O
Awning rail*	S	S	S	S	S	S	S
Bumper - front: steel, chrome plated	S	S	S	S	S	S	S
Entrance door step	S	S	S	S	S	S	S
Entrance door w/screen door - deadbolt lock	S	S	S	S	S	S	S
Graphics	S	S	S	S	S	S	S

S Standard
O Optional

	22WK	22RB	24RC	27WU	29WQ	31WU	31WM
Ladder, Mirrors (rear view) - w/convex on both sides	S	S	S	S	S	S	S
Mudflaps - rear	S	S	S	S	S	S	S
Outlet - 110-V, curbside	S	S	S	S	S	S	S
Porch light - interior switch	S	S	S	S	S	S	S
Running boards (aluminum)	S	S	S	S	S	S	S
Sewer hose - w/storage	S	S	S	S	S	S	S
Storage compartments - steel is E-coated, locking doors, floor liner	S	S	S	S	S	S	S
Tire (spare)	O	O	O	O	O	O	O
Tire tool - lug wrench	S	S	S	S	S	S	S
Tires (radial)	S	S	S	S	S	S	S
Trailer towing package - w/Class II hitch	O	O	O	O	O	O	O
Trailer wiring extension	S	S	S	S	S	S	S
Wash station	O	O	O	O	O	O	O
Water fill door - lockable	S	S	S	S	S	S	S
Wheelcovers - stainless steel	S	S	S	S	S	S	S
Wheel liners* - stainless steel	O	O	O	O	O	O	O
SYSTEMS							
Air conditioner - roof, 13,500-BTU	O	O	O	O	O		
Air conditioner - roof, 14,800-BTU			O			O	O
Air conditioning pre-wiring - roof	S	S	S	S	S	S	S
Battery - deep cycle	S	S	S	S	S	S	S
2 batteries* - deep cycle (maintenance-free)	O	O	O	O	O	O	O
City water hookup	S	S	S	S	S	S	S
Electrical control center - automotive DC fuses, AC breakers, 9-amp. battery charger/32-amp. converter, (45-amp. converter 31WU & 31WM)	S	S	S	S	S	S	S
Furnace - ducted, low profile, 25,000-BTU	S	S	S				
Furnace - ducted, low profile, 30,000-BTU				S	S	S	S
Generator* - 3,600-watt, 110-V wiring, switches, LP, requires diesel engine option				O	O	O	O
Generator* - 4,000-watt, 110-V wiring, switches, gas	O	O	O	O	O	O	O
Generator hourmeter gauge, generator start/stop switch on range hood (available only when generator is ordered)	O	O	O	O	O	O	O
Generator prep kit* - gas line, 12-V wiring (gas line NA w/diesel engine)	S	S	S	S	S	S	S
Monitor panel - water, holding & LP tank levels, battery condition gauge, water pump switch, located on galley wall	S	S	S	S	S	S	S
Power cord - 30-amp., 25 feet long	S	S	S	S	S	S	S
Water drain system - through floor	S	S	S	S	S	S	S
Water heater - 6-gal., electronic ignition	S	S	S	S	S	S	S
Water heater winterization bypass valve	S	S	S	S	S	S	S
Water line winterization valve	S	S	S	S	S	S	S
Water pump (demand)	S	S	S	S	S	S	S
SAFETY							
3-point cab seat belts	S	S	S	S	S	S	S
Assist strap - interior	S	S	S	S	S	S	S
Carbon monoxide detector/alarm	S	S	S	S	S	S	S
Escape window			S	S	S	S	S
Fire extinguisher (10-B.C.)	S	S	S	S	S	S	S
Ground fault interrupter	S	S	S	S	S	S	S
High-mount brakelight	S	S	S	S	S	S	S
Lap belts - in selected areas	S	S	S	S	S	S	S
LPG leak detector/alarm	S	S	S	S	S	S	S
Smoke detector/alarm	S	S	S	S	S	S	S

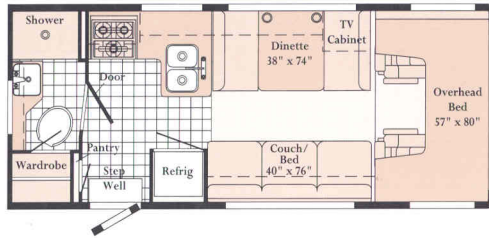
◇ Capacities shown are tank manufacturer's listed water capacity (W.C.). Actual filled LP capacity is 80% of listing due to safety shutoff required on tank.

Δ Available January 1998. NA Not Available.

* Not all options available in combination. See dealer for details.

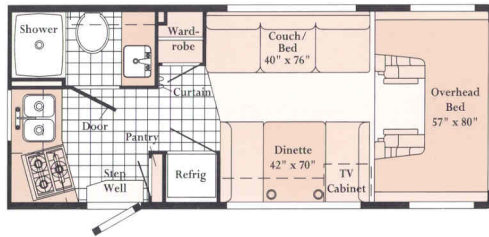
Winnebago Industries' continuing program of product improvement makes specifications, equipment, model availability and prices subject to change without notice. Comparisons to other motor homes are based on the most recent information available.

THIS YEAR'S FLOORPLAN SELECTION COULDN'T GET MUCH WIDER.



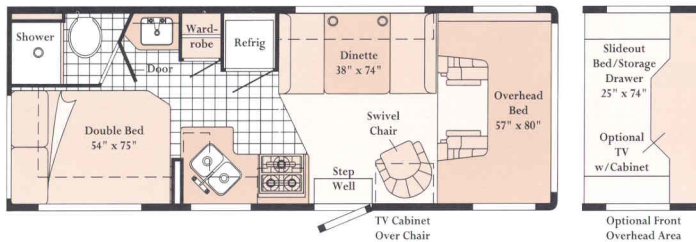
22RB

- Convenient L-shaped galley.
- Rear bath.
- Generous sleeping space.



22WK

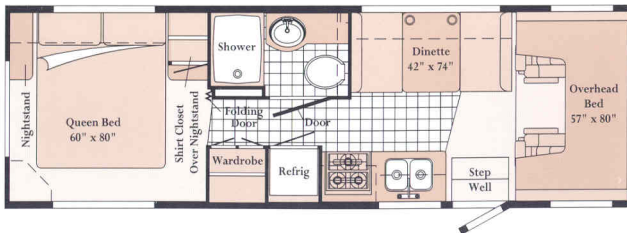
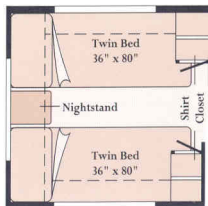
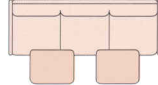
- New widebody design.
- Convenient rear galley.
- Rear bath.
- Generous sleeping space.



24RC

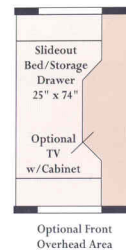
- Private rear bedroom and bath.
- Overhead bunk or available overhead entertainment center.
- Convertible dinette up front for more sleeping space.

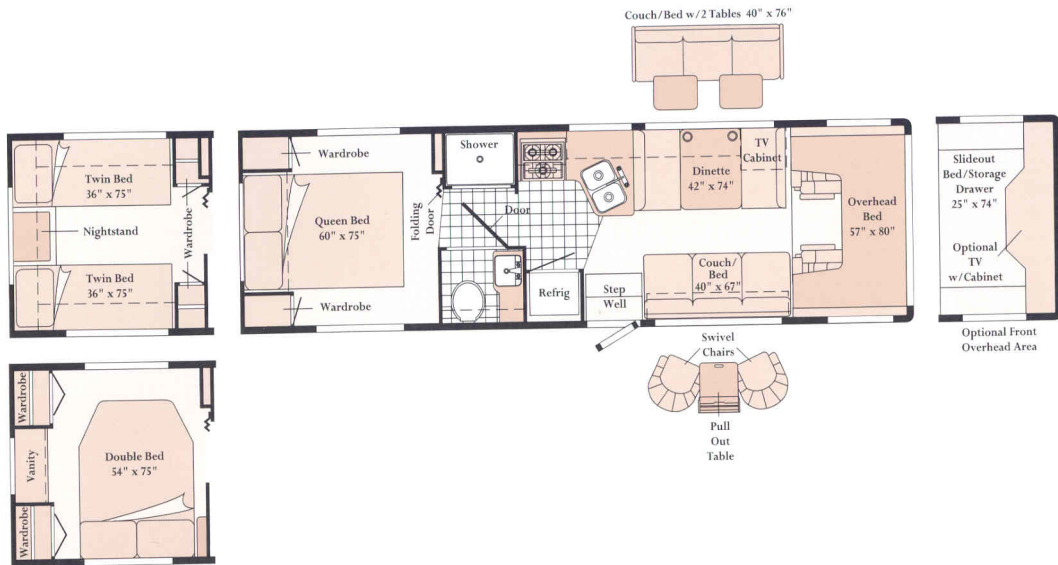
Couch/Bed w/2 Tables 40" x 76"



27WU

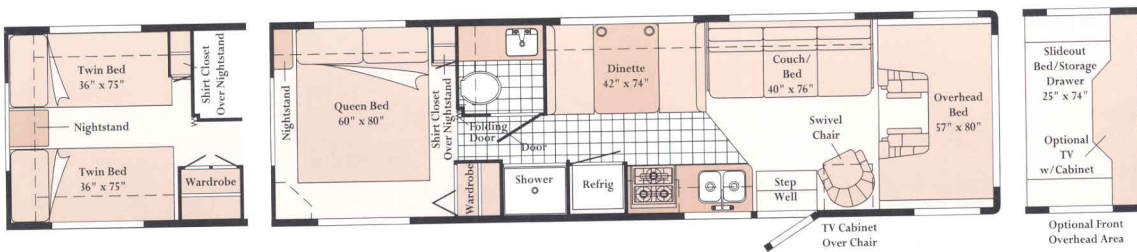
- New widebody design available January 1998.
- In-line galley.
- Private bath with shower/tub.
- Choose from queen or twin bed option.





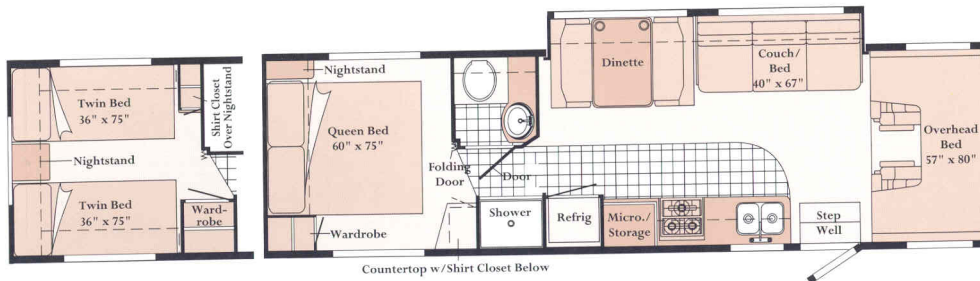
29WQ

- New widebody design.
- Wide range of floorplan options.
- Choose from double, queen or twin beds.
- Several dining and seating options.



31WU

- Widebody design.
- Separate lounge and dinette areas for a Class A feel.
- Choose from queen or twin bed option.



31WM

- New widebody slideout.
- Queen or twin bed option in the rear.
- In-line galley.
- Separate microwave cabinet.

Widebody designs are over 96" wide. Some states restrict access on some or all state roads to 96". You should confirm the road usage laws in the states of interest to you.
 Note: Dimensions shown are for sleeping space only and dashed lines denote overhead storage areas.



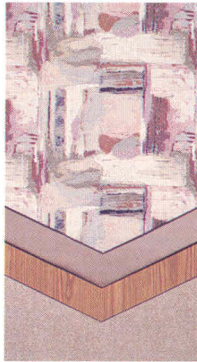
Standard Vinyl Flooring

MINNIE INTERIORS

Gemstone
with Waterford Oak



Sandpiper
with Waterford Oak



Every motor home interior is stitched, constructed, sanded and stained with care in our factory by our own employees. We even perform extensive wear tests to ensure long-lasting durability. This concept is called Home Comfort Design, and it gives us complete control over the fit and finish of the final product. We take great pride in offering you high-quality, handcrafted living spaces to match your lifestyle.



Our high standards made us one of the first motor home manufacturers to earn the title "Qualified Vehicle Modifier," identifying us as a leader among companies who build on Ford chassis.



Thanks to our exclusive design you don't have to sacrifice storage space when you purchase a slideout. Inside and out, you'll enjoy easy access compartments with a surprisingly generous amount of room for your gear.

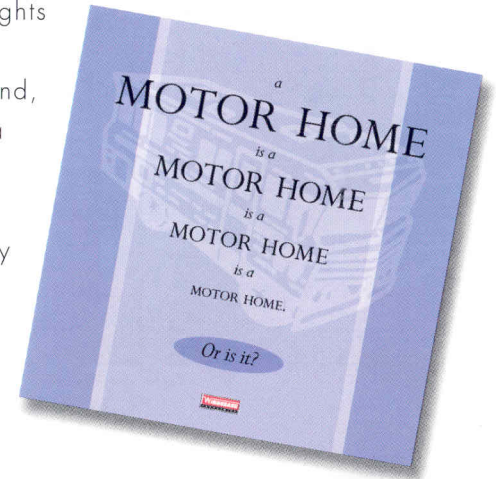


31WM

This dinette/lounge slideout offers the roominess of a Class A floorplan in a Class C motor home.

Ask for the new Winnebago Industries buyer's guide and discover why all motor homes are not created equal.

The process of buying a motor home can be intimidating, even if you're a veteran. And in a market saturated with flashy first impressions, the true signs of quality are often hard to spot. So this year we put together a user-friendly guide to help you make some educated observations as you compare Winnebago Industries motor homes to the competition. It explains our uniquely superior on-site manufacturing processes, highlights the importance of meeting (and exceeding) industry standards and, best of all, it's free. Use it as a reference tool when shopping around, or familiarize yourself with some key safety and quality considerations. Ask for the guide next time you visit your Winnebago Industries dealer, and upgrade your motor home buying savvy.



Visit us at www.winnebagoind.com

WINNEBAGO Built proudly by

 © 1997 Winnebago Industries, Inc. Forest City, IA 50436. Printed in USA.

Seat belts are your most important hookup. Always buckle up.