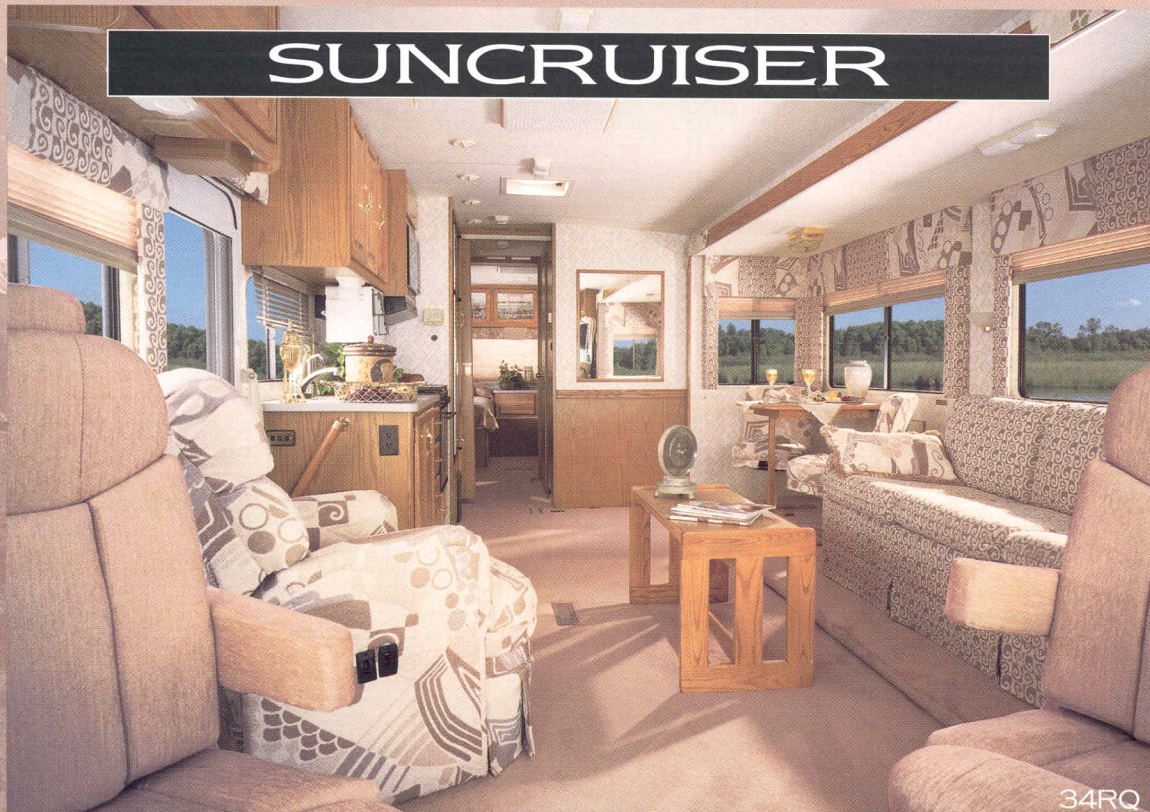


# SUNCRUISER



 ITASCA.





# QUALITY

*It comes in all shapes and sizes.*

At Winnebago Industries, we've never believed in the concept of one-size-fits-all. People are different, and their needs also are different. That's why we designed Suncruiser® with three distinctly different models.

Our conventional Suncruiser models offer travelers a surprisingly affordable choice for basement storage. Our popular Suncruiser slideout models provide significantly increased interior living space at the push of a button. And our all-new Suncruiser widebodies take affordable luxury to new widths with their roomier interior design and inviting seating arrangements. Each model includes a number of different floorplan configurations, making it easy to find the perfect Suncruiser to meet your needs.

Best of all, each model is designed and built using Winnebago Industries' exclusive interior design process — Home Comfort Design. This means the highest quality furniture, fabrics and carpet are tastefully integrated into Suncruiser's spacious living environments.

The 1996 Suncruiser, Suncruiser slideout and Suncruiser widebody — three different models built on just one foundation. Quality.



37RW

*Owning a Suncruiser slideout truly is a growing experience. To extend or retract the slideout, simply push the interior button and the innovative HWH® extension system automatically adjusts hydraulic fluid pressure to ensure smooth extension, retraction and seal. And all this happens in just 20 seconds. The slideout adds 39 more square feet of comfort, efficiency and livability to Suncruiser's already spacious living environment while maintaining a comfortable ceiling height in the slideout room.*





*Even when closed, the slideout's remarkable design offers an extremely large living area. Like all Suncruiser models, the slideout features rich cabinetry complemented by beautiful carpet, fabrics and window treatments.*







37RW

*Suncruiser's abundance of large, tinted windows offer incredible views of the passing scenery. When you're not enjoying the countryside, cast your eyes on the available front 19" color TV with remote. Also available is a remote controlled VCR with switching system to allow viewing on either the available front or rear TV.*



*New this year, an available digital satellite system offers more than 175 channels with CD-quality sound, clean pictures and remote control convenience. Not available in Canada. (Program activation fees not included.)*



*Any ideas of "roughing it" are instantly dismissed by the Suncruiser's well equipped galley. Standard features include a three-burner range with large oven, touch control microwave, water purification system and a stainless steel sink. A large side-by-side refrigerator/freezer is available on some models.*





*Handcrafted wood cabinetry and wainscoting provide a warm welcome to the bedroom. The rich wood is nicely complemented by our beautifully coordinated bedspread, pillow shams, throw pillows and window treatments.*

*Winnebago Industries' uncompromising commitment to fit and finish is evident throughout the coach. Our wardrobes are just one example. They include mirrored doors, carpeted flooring and a convenient light.*



*The bathroom is a good example of Suncruiser's efficient use of space. Amenities include medicine and lavatory cabinets, make-up lights, a large sink, shower door (glass or pleated depending on model) and skylight.*







3450

Multiple fabric choices allow you to customize your Suncruiser to your individual tastes. To ensure years of lasting beauty, all fabrics and carpet throughout the coach are treated with Scotchgard™ Brand Soil Repellent. For added protection all carpeting is color extruded, rather than dyed, and has a stain and mildew resistant hypoallergenic backing.



Suncruiser's flexible floorplans allow you to choose the features that fit your lifestyle. For dining, most Suncruiser models offer the choice of a dinette or table and chairs, shown here.





34RO

*Reading lamps, nightstands and comfortable Sealy® innerspring mattresses are just a few of the features that make our bedrooms so inviting. A spacious storage area under the beds of most models is the perfect place to store extra towels, blankets or clothing.*



34RA

*A wood stand or shelf allows you to watch TV from the comfort of the bedroom on our available 9" color TV with remote. Available front VCR with switching system allows you to watch videos in either the front lounge area or bedroom.*



# BEAUTY

*Definitely a Suncruiser.  
And a little more.*

From the moment our first RV hit the road more than 37 years ago, we've been learning — learning from our customers, and learning from experience. And the sum of that learning has been carefully poured into each and every Suncruiser.

Prepare to meet the newest Suncruiser, the widebody. This design takes the Suncruiser to a new level, offering the additional square footage needed for the features some travelers were requesting. Like a wider aisle, large sectional sofa, roomier kitchen, and the option of a king-size bed in the bedroom. Basically, a little more of

what the Suncruiser already offers.

And while the widebody is a new motor home from the ground up, strictly speaking the widebody is not new. It's just different. It takes everything Suncruiser is known for and simply expands on it. The way we see it, there's just more Suncruiser to enjoy.



36WQ

*The widebody offers two appealing floorplans to choose from. In the living area, choose from a large sectional sofa with coffee table, or a forward facing couch with fold up table and rear facing love seat or lounge chair with foot rest. In the bedroom, choose between a queen bed or the available king bed. Take comfort throughout the year knowing that all floorplans have a thick, insulated roof with ducting and wiring already in place for the available roof air conditioning system.*





*Like every Suncruiser model, the widebody's driver area features an impressive array of conveniences. A rear view video monitoring system with audio is available to make maneuvering safe and easy. The available solar panel charges the battery to make sure it never runs low. Both of the captain's chairs swivel to become part of the living area.*



*The standard table and chair configuration on this model includes two fixed chairs with two additional folding chairs available. A table expansion leaf lets you change table length to meet your varied seating needs.*



# DESIGN

*We take it a step further.*

Compare the interior of Suncruiser to any other comparably priced motor home and you'll notice a difference. Superior design.

Winnebago Industries' staff of highly-qualified interior designers utilizes a process called Home Comfort Design when creating each

and every Itasca motor home. As part of this process, they pore over fabrics, window treatments, wall coverings and carpeting until just the right combinations are found.

Once the fabrics and carpets are selected, each is subjected to a number of tests to ensure lasting beauty. For instance, all fabrics must pass our own double rub test (a machine

mechanically simulating getting in and out of a seat over 15,000 times to see how the fabric wears).

Granted, this is not the fastest way to design a motor home. But it is the Itasca way. A quick walk-through of any Suncruiser model will reveal the difference our designers make. It's a difference you'll appreciate today.

And years from now.



*With a variety of models and floorplans, Suncruiser truly does offer something for everyone. The 34RA's unique side aisle entrance to the bedroom provides increased privacy without sacrificing floorplan space.*





The 34RA's side aisle offers the added advantage of two bathroom entrances – one from the galley and one from the bedroom. Like every Suncruiser model, this roomy design includes a large stand-up shower with flexible shower head.

Another advantage of the 34RA side aisle design is the beautifully finished corner hutch across from the galley.



# STYLE

You can see it in the details.



WINTER MOSS\*



MAIN



ACCENT



CARPET



TUSCANY\*∞



MAIN



ACCENT



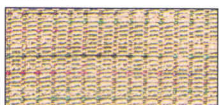
CARPET



NORTH SHORE\*



MAIN



ACCENT



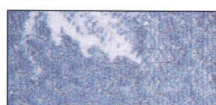
CARPET



REGENCY\*



MAIN

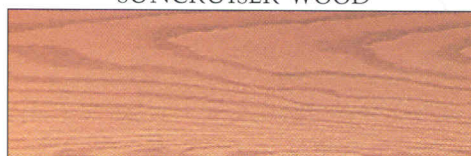


ACCENT



CARPET

SUNCRUISER WOOD



\*The style of chair shown is not available on the motor home you purchase. It is shown to represent fabric color and pattern only.

∞ A fifth interior option is also available. This Siena option incorporates the Tuscany accent fabric as the main fabric. Carpet color is from Tuscany. Ask your dealer for samples of this complete color scheme.

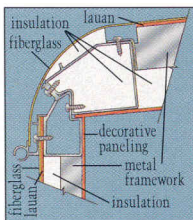


# STRUCTURE

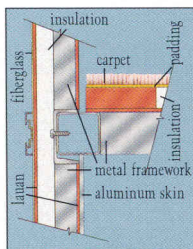
*A solid reason to drive a Suncruiser.*

The foundation is where Winnebago Industries' 37-plus years of experience really shows. Suncruiser is built on a solid steel foundation welded directly to the chassis. There's no stronger way to build a motor home. This substructure is reinforced with steel throughout the cab, dash and floor. Itasca's famous Thermo-Panel® sidewall construction completes the package, combining good looks with unmatched strength and insulation.

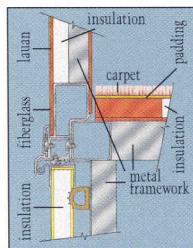
*A unique locking joint secures the sidewall to the roof. The crowned, overlapping design provides excellent water run-off.*



*On both the conventional and widebody models, a specially designed floor structure and joint lock provide support for the weight of the sidewall, resulting in Suncruiser's extraordinary strength and durability.*



Conventional



Widebody

Our engineers developed unique floor tie-downs to reduce stress, instead of the simple bracing most of our competition uses.

Foam sheet insulation prevents energy leaks and gaps in sidewalls.

Pick up your favorite stations with an available satellite TV system. (Not available in Canada.)

Our exclusive interlocking joint system connects the floor and walls to make a more durable, better-sealed body.

Windshield wipers are mounted in steel rather than fiberglass for strength and reliability.

Rooms are constructed with our own aluminum extrusions which provide additional strength, a flush-fitting appearance and reduced wind noise when traveling.

Safety glass windshield is mounted in steel, not wood or fiberglass, with automotive sealants for maximum strength.

Halogen headlights provide better visibility.

We invented Thermo-Panel® sidewall construction which combines light weight, structural integrity and durability.

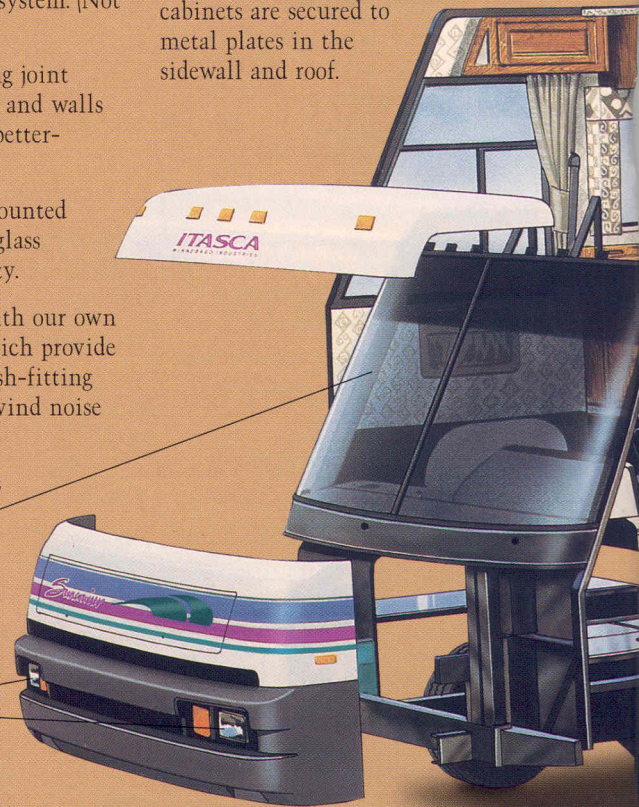
Every unit undergoes a water test simulating a rainfall of 50 inches per hour.

Seamless rotocast holding tanks make the best use of space and improve weight distribution.

Appliances are secured with steel tie-downs, an exclusive Winnebago Industries safety feature.

Gas shocks or die cast prop rods help to open and keep open side storage compartments.

For added safety, upper cabinets are secured to metal plates in the sidewall and roof.



Our locks are endurance & corrosion tested.

Wiring harnesses are built, tested and letter coded in our wire prep department to make service diagnosis faster and easier, and the electrical system is tested throughout the manufacturing process.



37RW

*The available color coordinated awning provides protection from the sun and rain. Slideout models include an automatic integrated awning.*



36WQ

*The driver's door is a convenient standard feature on diesel pusher models that is also available on every other model. In addition to running lights and integrated storage doors, contemporary graphics give Suncruiser a sleek, aerodynamic look.*



36WQ



The seamless fiberglass roof won't tear like rubber and has a standard 10-year limited parts and labor warranty, a Winnebago Industries exclusive.

All units are pre-wired for available roof air conditioning.

Each unit receives a final inspection where we check all dash functions as well as the fit and finish of the entire vehicle.

Windows have a non-hardening butyl sealant to prevent leakage.

Welded aluminum framework is strong enough to pass a drop test, yet light to maximize fuel efficiency and weight-carrying capacity.

Available solar panel/battery charger.

Smooth, one-piece fiberglass skin is strong, easy to clean, and free of exposed fasteners and bolts.

Exterior compartment doors are laminated with fiberglass skin on both sides and block foam insulation in the center for energy efficiency and sound absorption.

All welds are painted to prevent corrosion.

The steel substructure is laser-aligned and welded directly to the chassis frame rails to provide a square foundation.

Only Winnebago Industries subjects every new series to a computerized drop test that simulates dropping the unit upside down. This ensures that appliances and cabinets stay in place and that doors and windows operate.

Every unit is checked by computer for wheel alignment and checked at 75 chassis points.

The HWH® room extension mechanism carries a special extended three-year warranty, exclusive to Winnebago Industries-manufactured room extensions.

Slideout support rails are 6" deep, instead of the usual 4" on many competitors' models, minimizing deflection and eliminating the need for auxiliary room props.

Storage compartment steel is electrocoated to prevent corrosion.

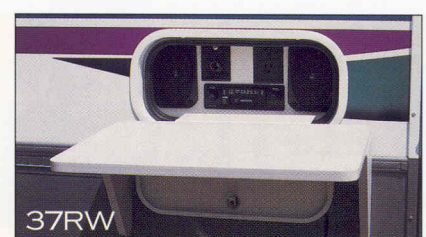
An available All Seasons Package includes luxury features like a driver's door, awning, exterior entertainment center, generator, roof air conditioner and more. Ask your dealer for details on this money saving option.



*Our large, locking pass-through compartments include durable weatherproof gaskets and carpeted floors to keep even the largest items safe, dry and easily accessible.*



*The heated service center neatly contains dump valves and cable input in one locking compartment.*



*Our patio entertainment center includes AM/FM/cassette radio with two speakers, TV jack, electrical outlets and a removable table.*



# 1996 SUNCRUISER FLOORPLANS

*Choose from forty-two floorplan  
combination possibilities*

## 29RQ

30'	Length
8'	Exterior Width
6'8"	Interior Height
7'7"	Interior Width
78 gal.	Fuel Capacity Chevrolet
75 gal.	Fuel Capacity Ford
86 gal.	Fresh Water w/Heater
111 gal.	Holding Tank Capacity
60 lbs.	LP Capacity
178"	Wheelbase

## 32RQ

32'2"	Length
8'	Exterior Width
6'8"	Interior Height
7'7"	Interior Width
78 gal.	Fuel Capacity Chevrolet
75 gal.	Fuel Capacity Ford
86 gal.	Fresh Water w/Heater
99 gal.	Holding Tank Capacity
80 lbs.	LP Capacity
208"	Wheelbase

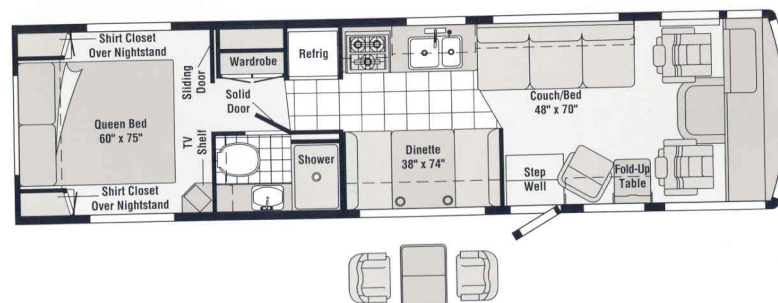
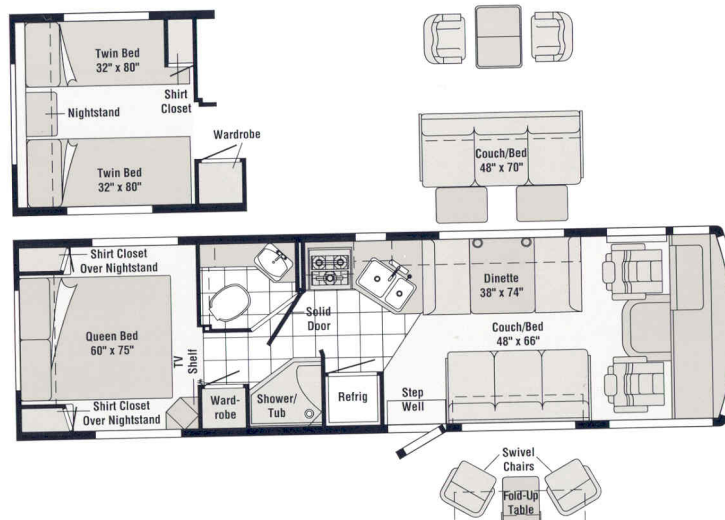
Note: Dimensions shown are for  
sleeping space only and dashed  
lines denote overhead storage areas.



Standard Vinyl



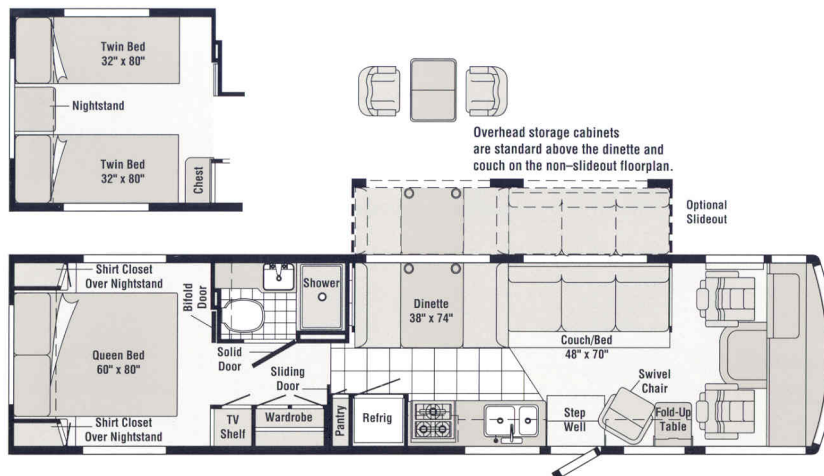
Optional Vinyl





## 34RQ

34'2"	Length
8'	Exterior Width
6'8"	Interior Height
7'7"	Interior Width
78 gal.	Fuel Capacity Chevrolet
75 gal.	Fuel Capacity Ford
70 gal.	Fresh Water w/Heater
105 gal.	Holding Tank Capacity
100 lbs.	LP Capacity
228"	Wheelbase



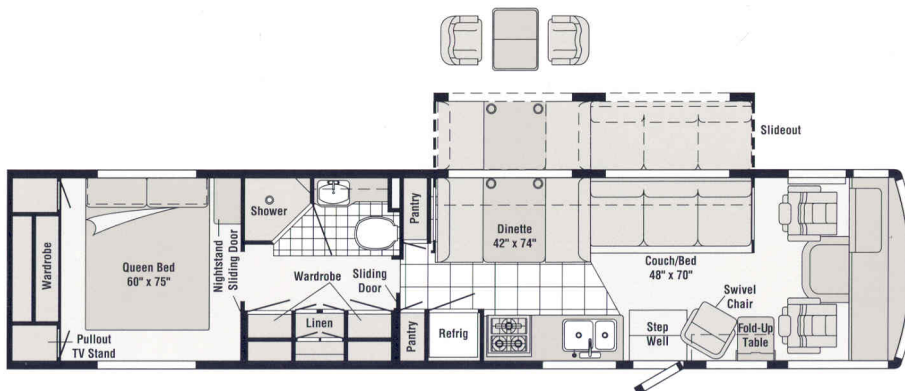
## 34RA

34'2"	Length
8'	Exterior Width
6'8"	Interior Height
7'7"	Interior Width
78 gal.	Fuel Capacity Chevrolet
75 gal.	Fuel Capacity Ford
86 gal.	Fresh Water w/Heater
99 gal.	Holding Tank Capacity
100 lbs.	LP Capacity
228"	Wheelbase



## 37RW

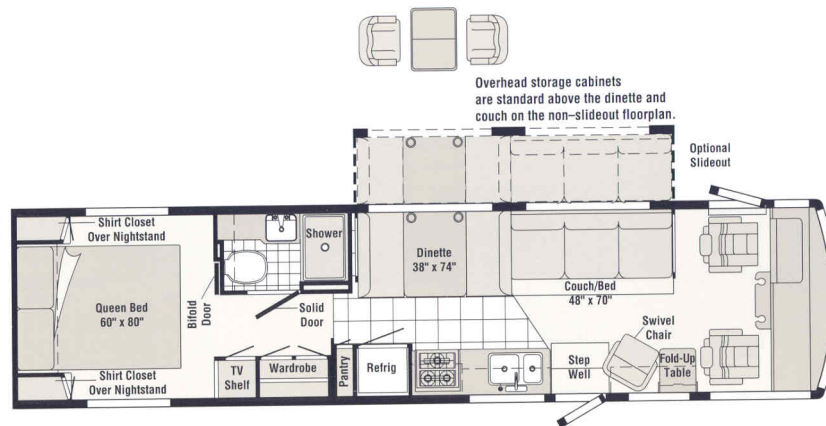
37'6"	Length
8'	Exterior Width
6'8"	Interior Height
7'7"	Interior Width
75 gal.	Fuel Capacity Ford
70 gal.	Fresh Water w/Heater
105 gal.	Holding Tank Capacity
100 lbs.	LP Capacity
228"+Tag	Wheelbase





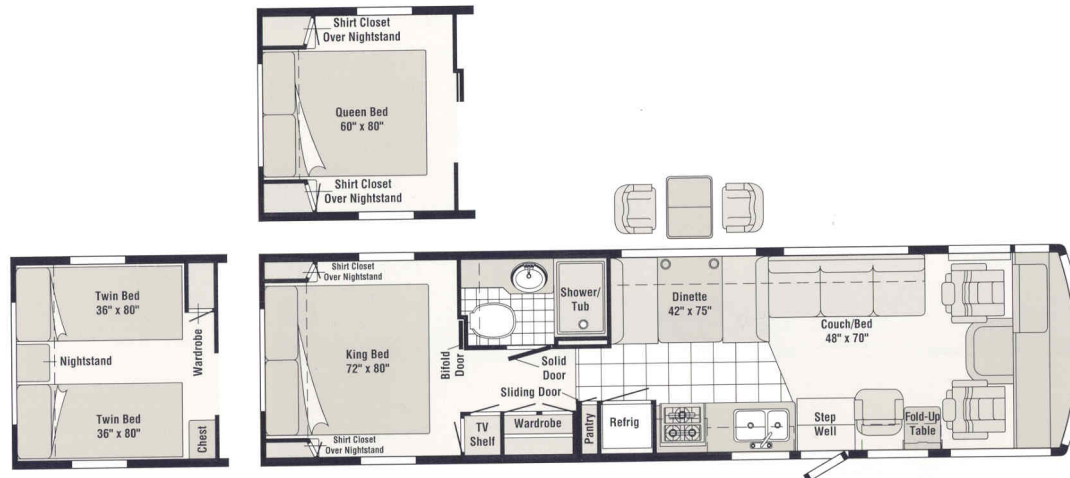
## 34RQ PUSHER

34'2"	Length
8'	Exterior Width
6'8"	Interior Height
7'7"	Interior Width
90 gal.	Fuel Capacity Freightliner
92 gal.	Fresh Water w/Heater
105 gal.	Holding Tank Capacity
130 lbs.	LP Capacity
228"	Wheelbase



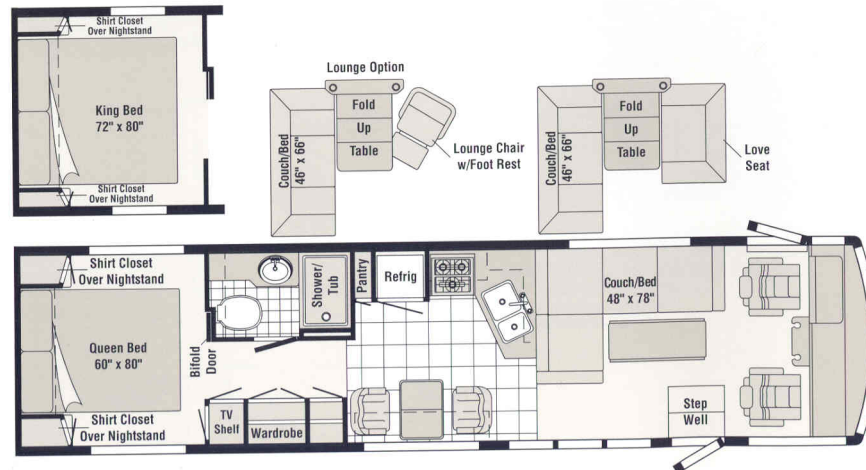
## 34WK

34'2"	Length
8'5.5"	Exterior Width
6'8"	Interior Height
8'	Interior Width
78 gal.	Fuel Capacity Chevrolet
75 gal.	Fuel Capacity Ford
86 gal.	Fresh Water w/Heater
96 gal.	Holding Tank Capacity
100 lbs.	LP Capacity
228"	Wheelbase



## 36WQ PUSHER

36'6"	Length
8'5.5"	Exterior Width
6'8"	Interior Height
8'	Interior Width
90 gal.	Fuel Capacity Freightliner
92 gal.	Fresh Water w/Heater
105 gal.	Holding Tank Capacity
130 lbs.	LP Capacity
252"	Wheelbase





# 1996 SUNCRUISER

29RQ	32RQ	34RQ	34RA	37RW	34RQ-P	34WK▼	36WQ-P▼	
30'	32'2"	34'2"	34'2"	37'6"	34'2"	34'2"	36'6"	Length
178"	208"	228"	228"	228" + Tag	228"	228"	252"	Wheelbase
78 gal.	78 gal.	78 gal.	78 gal.	NA	NA	78 gal.	NA	Fuel Capacity - Chevrolet
75 gal.	75 gal.	75 gal.	75 gal.	75 gal.	NA	75 gal.	NA	Fuel Capacity - Ford
NA	NA	NA	NA	NA	90 gal.	NA	90 gal.	Fuel Capacity - Freightliner
86 gal.	86 gal.	70 gal.	86 gal.	70 gal.	92 gal.	86 gal.	92 gal.	Fresh Water Capacity w/Heater
111 gal.	99 gal.	105 gal.	99 gal.	105 gal.	105 gal.	96 gal.	105 gal.	Holding Tank Capacity
60 lbs.	80 lbs.	100 lbs.	100 lbs.	100 lbs.	130 lbs.	100 lbs.	130 lbs.	LP Capacity
TBD	TBD	11'7"	11'7"	NA	NA	11'10"	NA	Exterior Height w/Roof Air - Chevrolet†
TBD	TBD	11'9"	11'7"	11'6"	NA	11'7"	NA	Exterior Height w/Roof Air - Ford†
NA	NA	NA	NA	NA	TBD	NA	11'10"	Exterior Height w/Roof Air - Freightliner†
8'	8'	8'	8'	8'	8'	8'5.5"	8'5.5"	Exterior Width
6'8"	6'8"	6'8"	6'8"	6'8"	6'8"	6'8"	6'8"	Interior Height
7'7"	7'7"	7'7"	7'7"	7'7"	7'7"	8'	8'	Interior Width
TBD	TBD	141.8 cu. ft.	126.9 cu. ft.	111.5 cu. ft.	TBD	159.5 cu. ft.	143.4 cu. ft.	Exterior Storage
14,800 lbs.	16,500 lbs.	16,500 lbs.	16,500 lbs.	NA	NA	16,500 lbs.	NA	GVWR - Chevrolet
15,200 lbs.	17,000 lbs.	17,000 lbs.	17,000 lbs.	20,000 lbs.	NA	17,000 lbs.	NA	GVWR - Ford
NA	NA	NA	NA	NA	19,840 lbs.	NA	19,840 lbs.	GVWR - Freightliner

## AUTOMOTIVE

29RQ	32RQ	34RQ	34RA	37RW	34RQ-P	34WK	36WQ-P	
●	●	●	●		●			<b>Chassis - Chevrolet</b> 7.4L 454 V-8 Fuel-Injected Gasoline Engine, Auto. Transmission w/Overdrive & Cooler, Front Suspension: Independent, Coil Spring w/Aux. Air Bags, Rear Suspension: Leaf Spring, 630-CCA Battery/105-Amp. Alternator
○								<b>Chassis - Chevrolet</b> 6.5L Turbo Diesel Engine, Auto. Transmission w/Overdrive & Cooler, Front Suspension: Independent, Coil Spring w/Aux. Air Bags, Rear Suspension: Leaf Spring, 630-CCA Battery/105-Amp. Alternator
○	○	○	○	●	○			<b>Chassis - Ford</b> 7.5L 460 V-8 Fuel-Injected Gasoline Engine, Auto. Transmission w/Overdrive & Cooler, Front Suspension: Mono-Beam Axle w/Leaf Spring, Rear Suspension: Multi-Leaf Spring, 650-CCA Battery/130-Amp. Alternator
					●	●		<b>Chassis - Freightliner</b> B5.9L 230-HP Turbo-Charged, After-Cooled Cummins Rear Diesel Engine, Auto. Transmission w/Cooler & 2 Speed Overdrive, I-Beam w/Leaf Spring Front Suspension, Leaf Spring Rear Suspension, Engine Block Heater, Fuel/Water Separator, Air Flow Indicator, 923-CCA Battery/100-Amp. Alternator
	○	○	○		○			<b>Engine Exchange*</b> Chevrolet, Increased HP
○	○	○	○		○			<b>Shocks (Gas)*</b> Front, Chevrolet
				●				<b>Springs (Air)</b> Tag Axle
●	●	●	●	●	●	●	●	<b>Tires (Radial)</b> w/Spare

## DRIVER CONVENIENCES

29RQ	32RQ	34RQ	34RA	37RW	34RQ-P	34WK	36WQ-P	
●	●	●	●	●	●	●	●	<b>12-V Electrical Supply/Lighter</b>
●	●	●	●	●	●	●	●	<b>Battery Charge Control</b> Dual, Automatic
●	●	●	●	●	●	●	●	<b>Battery Charger (Solar)</b> Wiring Prep

29RQ	32RQ	34RQ	34RA	37RW	34RQ-P	34WK	36WQ-P	
○	○	○	○	○	○	○	○	<b>Battery Charger (Solar)</b>
●	●	●	●	●	●	●	●	<b>Battery Disconnect</b> Auxiliary
								<b>Cabinet Center Console</b>
●	●	●	●	●		●		<b>Convenience Tray</b>
●	●	●	●	●	●	●	●	<b>Cruise Control</b>
●	●	●	●	●	●	●	●	<b>Curtain w/Track</b> Front Wrap-Around
○	○	○	○	○	○	○	○	<b>Defroster*</b> Auxiliary 2-Speed
○	○	○	○	○	●	○	○	<b>Driver's Door*</b>
●	●	●	●	●	●	●	●	<b>Heating/Air Conditioning</b> Automotive Blend Air System
●	●	●	●	●	●	●	●	<b>Hood Release</b> Exterior Key Locks
●	●	●	●	●	●	●	●	<b>Map Light</b>
●	●	●	●	●	●	●	●	<b>Mirrors (Rear View)</b> Exterior, Low Mounted, Includes Convex Element
○	○	○	○	○	○	○	○	<b>Mirrors (Rear View)</b> Exterior, Low Mounted, Electric w/Remote & Defrost
●	●	●	●	●	●	●	●	<b>Rear View Monitor System</b> Cable Ready
○	○	○	○	○	○	○	○	<b>Rear View Monitor System</b> Video/Audio
●	●	●	●	●	●	●	●	<b>Seats w/3-Point Retracting Seat Belts</b> Reclining High-Back Design, Hinged Armrests, Lumbar Support, Swivel/Slide Pedestal w/Manual Remote Control
○	○	○	○	○	○	○	○	<b>Seat*</b> Six-Way Manual Adjust Driver's Seat
●	●	●	●	●	●	●	●	<b>Service Light</b> Driver's Side
●	●	●	●	●	●	●	●	<b>Start Circuit</b> Auxiliary
●	●	●	●	●	●	●	●	<b>Steering Power</b> Assisted w/Tilt Wheel
●	●	●	●	●	●	●	●	<b>Storage Cabinet (Front &amp; Side Overheads)</b>
●	●	●	●	●	●	●	●	<b>Sunvisors</b> Multi-Adjustable
○	○	○	○	○	○	○	○	<b>Upgrade - Driver's Convenience Package</b> Carpeted Floor Mats, Wall-Mount Map Pockets
●	●	●	●	●	●	●	●	<b>Windows (Driver/Passenger)</b> Sliding, w/Screens
●	●	●	●	●	●	●	●	<b>Windshield Wipers (Intermittent)</b>



## ENTERTAINMENT

29RQ	32RQ	34RQ	34RA	37RW	34RQ-P	34WK	36WQ-P	
●	●	●	●	●	●	●	●	Antenna (Radio) Roof-Mounted, Flexible Rubber
○	○	○	○	○	○	○	○	C.B. Prep Kit* Antenna, Coax Wiring, 12-V Power Connection
○	○	○	○	○	○	○	○	Entertainment Center (Patio)* DC Receptacle, 110-V Outlet, TV Jack, Radio Antenna, AM/FM/Cassette Radio, Speakers (2), Removable TV Table, Locking Door
○	○	○	○	○	○	○	○	Inverter* 110-V for TV/VCR
●	●	●	●	●	●	●	●	Satellite System Pre-Wiring Roof
○	○	○	○	○	○	○	○	Satellite System Digital◆
○	○	○	○	○	○	○	○	Satellite System w/Receiver Digital◆
●	●	●	●	●	●	●	●	Stereo Power Switch For Main or Auxiliary Battery Use
●	●	●	●	●	●	●	●	Stereo w/Digital Clock (Cab) Electronic Tune AM/FM/Cassette Deck w/Speakers (4)
○	○	○	○	○	○	○	○	Stereo w/CD Player (Cab) Electronic Tune AM/FM w/Speakers (4)
○	○	○	○	○	○	○	○	TV* (9" Color) w/Remote Located in Bedroom
○	○	○	○	○	○	○	○	TV* (19" Color) w/Remote
○	○	○	○	○	○	○	○	TV* (19" Color) & VCR w/Remotes Switching System, Cabinet Exchange
●	●	●	●	●	●	●	●	TV Enhancement Package Antenna (Amplified), DC Receptacles (2), Interior Jacks (2), Coax Wiring, Cable Input, Exterior Antenna Jack, TV Shelf, Stand or Cabinet

## SLIDEOUT

29RQ	32RQ	34RQ	34RA	37RW	34RQ-P	34WK	36WQ-P	
		○		●	○			Slideout Room (Driver's Side)* Approximately 13' Long w/36" Extension, Switch Located on Instrument Panel, Decorative Wall Lamp, Decorative Dinette Light, Coffee Table, Cover & Window Awnings
				○	○			Slideout Overhead Cabinets* (Mandatory Option)

## INTERIOR

29RQ	32RQ	34RQ	34RA	37RW	34RQ-P	34WK	36WQ-P	
●	●	●	●	●	●	●	●	Cabinets Wood Doors
●	●	●	●	●	●	●	●	Carpeting w/Pad Stain Resistant w/Scotchgard™ Protector
●	●	●	●	●	●	●	●	Ceiling Fabric
●	●	●	●	●	●	●	●	Ceiling Lights
●	●	●	●	●	●	●	●	Ceiling Vent* Non-Powered, Lounge, Galley, Bedroom
○	○	○	○	○	○	○	○	Ceiling Vent Powered Ventilator Fan, Galley (Lounge 29RQ)
●	●	●	●	●	●	●	●	Ceiling Vent Powered, Bathroom
●	●	●	●	●	●	●	●	Clock Decorator Style
●	●	●	●	●	●	●	●	Color Themes (Interior) Choice of Winter Moss (Green), Tuscany (Taupe), Sienna (Taupe), North Shore (Taupe), Regency (Blue)
●		●			●	●		Divider Folding Door (Bi-Fold NA 29RQ)
	●	●		●	●	●		Divider Hinged Door
		●		●	●	●		Divider Sliding Door (2 Doors on 37RW)
	●	●	●	●	●	●		Lamp(s)* Decorator Style, Wall-Mounted in Lounge
●	●	●	●	●	●	●		Light (Aisle Courtesy) By Entrance Door

29RQ	32RQ	34RQ	34RA	37RW	34RQ-P	34WK	36WQ-P	
●	●	●	●	●	●	●	●	Wardrobe Mirrored Doors, Carpeted Floor, Drawers (NA on 29RQ & 32RQ), Light
				○				Washer/Dryer Combination*
●	●	●	●	●	●	●	●	Windows Tinted w/62% Light Transmittal
○	○	○	○	○	○	○	○	Windows* Dual Glazed, Thermo-Insulated

## GALLEY

29RQ	32RQ	34RQ	34RA	37RW	34RQ-P	34WK	36WQ-P	
○	○	○	○	○	○	○	○	Coffee Maker*
								Counter Extension Flip-Up
○	○	○	○	○	○	○	○	Flooring (Vinyl) Hutch
●	●	●	●	●	●	●	●	Microwave Oven Touch Control
		●		●	●	●	●	Pantry
	●	●			●	●		Picture* Framed
●	●	●	●	●	●	●	●	Range Hood w/Light, Powered Vent
●	●	●	●	●	●	●	●	Range w/Large Glass-Doored Oven 3-Burners, Range Cover
●	●	●	●	●	●	●	●	Refrigerator/Freezer Large, Double-Door, Flush-Mounted
		○		○	○	○	○	Refrigerator/Freezer* Side-by-Side w/Icemaker
●	●	●	●	●	●	●	●	Sink (Double) Stainless Steel, Recessed w/Countertop Covers, Single Control Faucet
								Skylight
●	●	●	●	●	●	●	●	Spice Rack
				●				Storage below Dinette Seats
				●				Storage Cabinet 2 Shelves, 3 Drawers
○	○	○	○	○	○	○	○	Table & Chairs (2)
								Table & Chairs (4)*
●	●	●	●	●	●	●	●	Two Folding Chairs
								Water Purification System

## BEDROOM

29RQ	32RQ	34RQ	34RA	37RW	34RQ-P	34WK	36WQ-P	
●	●	●	●	●	●	●	●	Bedsprad(s), Pillows, Pillow Shams, Throw Pillow
		●			●			Hamper*
●	●	●	●	●	●	●	●	Lamp(s) Decorator Style, Wall-Mounted
●	●	●	●	●	●	●	●	Mattress(es) Sealy® Innerspring w/Non-Slip Mat, Access to Storage below, Gas Springs
●	●	●			●	●		TV Shelf Also Available on 32RQ w/Twin Bed Option
			●	●				TV Stand
●	●	●	●	●	●	●	●	Wainscoting

## BATHROOM

29RQ	32RQ	34RQ	34RA	37RW	34RQ-P	34WK	36WQ-P	
○	●	●	●	●	●	●	●	Flooring (Vinyl)
						●		Hamper
●	●	●	●	●	●	●	●	Lavatory Cabinet
●	●	●			●	●		Linen Cabinet
●	●	●	●		●			Makeup Lights (3)
				●		●		Makeup Lights (4)
			●	●				Medicine Cabinet 2 Mirrored Doors on 37RW, 1 Mirrored Door on 34RA
●	●	●			●	●		Medicine Cabinet Wooden Doors
●	●	●		●	●	●		Mirror Wall-Mounted
	●	●	●	●	●			Shower Flexible Shower Head, Molded Single-Piece Walls
●						●		Shower/Tub Flexible Shower Head, Molded Single-Piece Walls



29RQ	32RQ	34RQ	34RA	37RW	34RQ-P	34WK	36WQ-P	
●				●				Shower Door (Glass)
	●	●	●		●	●	●	Shower Door (Pleated)
						●	●	Sink Oval, w/Ledge Back
●	●	●	●	●	●			Sink Rectangular, Molded Soap Dishes
●	●	●	●	●	●	●	●	Skylight
●	●	●	●	●	●	●	●	Tissue Holder Surface Mount
●	●	●	●	●	●	●	●	Toilet w/Sprayer Porcelain
				●				Towel Bar
●	●	●	●		●	●	●	Towel Rack
●	●	●	●	●	●	●	●	Towel Ring

## EXTERIOR

29RQ	32RQ	34RQ	34RA	37RW	34RQ-P	34WK	36WQ-P	
●	●	●	●	●	●	●	●	Awning Rail
○	○	○	○	○	○	○	○	Awning*
●	●	●	●	●	●	●	●	Bumpers Rustproof, Front: Steel Reinforced, Rear: Formed Aluminum w/End Caps
●	●	●	●	●	●	●	●	Entrance Door w/Screen Door Latch & Deadbolt Locks, Electric Step w/Door Jamb Switch
●	●	●	●	●	●	●	●	Holding Tank (Heated Compartment)
●	●	●	●	●	●	●	●	Ladder
●	●	●	●	●	●	●	●	Mud Flaps Rear
●	●	●	●	●	●	●	●	Outlet 110-V, Curbside
●	●	●	●	●	●	●	●	Porch Light Interior Switch
				●				Power Cord Storage Compartment
●	●	●	●	●	●	●	●	Sewer Hose & Storage Compartment
●	●	●	●	●	●	●	●	Storage Compartments Floor Lining, Steel Construction, Locks, Hold-Ups (Gas Struts on 34WK & 36WQ), Lights
●	●	●	●	●	●	●	●	Tire Tools Wrench, Leverage Bar, Tire Hoist Rod on 34RQ Pusher & 36WQ Pusher
●	●	●	●	●	●	●	●	Trailer Towing Package w/Class II Hitch
●	●	●	●	●	●	●	●	Trailer Wiring Extension
						●		Trunk* Access to Underbed Storage (NA w/Twin Bed Option)
○	○	○	○		○	○	○	Undercoating*
●	●	●	●	●	●	●	●	Wash Station Pullout w/Water Pump Switch
●	●	●	●	●	●	●	●	Water Fill Door Lockable
●	●	●	●	●	●	●	●	Water Tank Drain
●	●	●	●	●	●	●	●	Wheel Covers
○	○	○	○	○	○	○	○	Wheel Liners Stainless Steel

## SYSTEMS

29RQ	32RQ	34RQ	34RA	37RW	34RQ-P	34WK	36WQ-P	
●	●	●	●	●	●	●	●	Air Conditioning Pre-Wiring Roof
○								Air-Conditioner Roof, 14,800-BTU
	○	○	○	○		○		Air-Conditioners Roof, Front/Rear: 13,500/13,500-BTU
					○		○	Air-Conditioners* Roof, Low-Profile, Front/Rear: 13,500/13,500-BTU
●	●	●	●	●	●	●	●	Batteries (2) Deep Cycle RV
●	●	●	●	●	●	●	●	City Water Hook-Up
●	●	●	●	●	●	●	●	Electrical Control Center 110-V AC/12-V DC, 9-Amp. Battery Charger, 45-Amp. Converter, DC Automotive Fuses, AC Circuit Breakers, 30-Amp. Power Cord
●	●							Furnace Ducted, Low Profile, Electronic Ignition, 35,000-BTU
		●	●	●	●	●	●	Furnace Ducted, Low Profile, Electronic Ignition, 40,000-BTU
●	●	●	●	●	●	●	●	Furnace Ducting System Rigid, below Floor
●	●	●	●	●	●	●	●	Generator Prep Kit Fuel Line, 12-V Wiring
○								Generator* 3,600-Watt, LP w/Diesel

29RQ	32RQ	34RQ	34RA	37RW	34RQ-P	34WK	36WQ-P	
○	○	○	○	○		○		Generator* 4,000, 5,000 or 6,500-Watt, Gas
					○		○	Generator* 6,500-Watt, LP
○	○	○	○	●	○	○	○	Leveling System by HWH* (Mandatory Option on 34RQ & 34RQ Pusher w/Slideout Option)
●	●	●	●	●	●	●	●	LP Tank Permanent Mount w/Gauge
●	●	●	●	●	●	●	●	Monitor Panel Water, Holding & LP Tank Levels, Battery Condition Gauge, Water Heater Ignition Switch w/Pilot Indicator Light, Water Pump Switch, Located in Galley
●	●	●	●	●	●	●	●	Water Heater 6-gal., Electronic Ignition
○	○	○	○	○		○		Water Heater (Motoraid) & Rear Automotive Heater
●	●	●	●	●	●	●	●	Water Heater Winterization By-Pass Valve
●	●	●	●	●	●	●	●	Water Pump (Demand) 3 Switches

## SAFETY

29RQ	32RQ	34RQ	34RA	37RW	34RQ-P	34WK	36WQ-P	
●	●	●	●	●	●	●	●	Assist Handle* Interior & Exterior
●	●	●	●	●	●	●	●	Assist Strap Interior
●	●	●	●	●	●	●	●	Carbon Monoxide Detector/Alarm
●	●	●	●	●	●	●	●	Fire Extinguisher (10-B.C.)
●	●	●	●	●	●	●	●	Ground Fault Interrupter
●	●	●	●	●	●	●	●	LP Leak Detector/Alarm
●	●	●	●	●	●	●	●	Smoke Detector/Alarm
●	●	●	●	●	●	●	●	Windshield Laminated Safety Glass
●	●	●	●	●	●	●	●	Window Escape

▼ The exciting Suncruiser 34WK and 36WQ floorplans feature a widebody design - over 96". In making your purchase decision, you should be aware that some states restrict access on some or all state roads to 96" in body width. Before making your purchase decision, you should confirm the road usage laws in the states of interest to you.

† The height of each model is based on the curb weight of a typically equipped unit on the standard chassis. The actual height of your vehicle may vary by as much as 2" depending on chassis or equipment variations.

● Standard ○ Optional NA Not Available TBD To Be Determined

\* Not all options available in combination. See dealer for details.

◆ TV satellite system options do not include programming activation. Quality reception is only available in the lower 48 States.

Winnebago Industries' continuing program of product improvement makes specifications, equipment, model availability and prices subject to change without notice.



Itasca motor homes can be found all over the country. But they're built in Forest City, Iowa, at the most advanced RV production facility in the world. The vast majority of components found in Itasca motor homes are developed and manufactured here. Free tours of the factory are available. For tour information call Winnebago Industries at (515) 582-3535.



When you buy an Itasca, you're buying much more than just a great motor home. You're also getting the most comprehensive warranty package in the industry. No other motor home manufacturer offers the coverage Winnebago Industries' customers receive.

For starters, every Itasca's basic warranty includes coverage for 12-months/15,000 miles. And unlike many manufacturers' policies, this warranty is transferable at no charge. Our sidewalls and backwall are so strong, they're covered by a limited warranty for 36-months/36,000 miles. The roof is covered by a standard 10-year limited parts and labor warranty, by far the longest roof warranty anywhere. And unlike warranties on some motor homes, our basic warranty also applies to all appliances and equipment we install, giving you the convenience of one-stop service. Service personnel at our dealerships receive extensive factory training, so they're up to date on all models and equipment.

Down the road, it's nice to know we have an extensive parts warehousing and distribution system which makes parts readily available, even for older models.

In addition to the standard warranty package, a free one-year membership in the Winnebago Industries Preferred Care Program is included with every 1996 Itasca motor home. This program provides you with many benefits, including technical phone assistance and free 24-hour referral to any of our 20,000-plus factory authorized dealer locations across North America. After the first year, membership in the Preferred Care Program can be extended through membership in the WIT Club.

The Winnebago-Itasca Travelers Club (WIT) offers our RV owners a great magazine, professional trip routing, mail forwarding and available Preferred Care for their motor homes. A highlight of the year is the Grand National Rally held in Forest City each summer. For more information, see your Itasca dealer or call (515) 582-6874.



It's been said that three factors will determine the success of any business — location, location, location.

With a Commercial Vehicle from Winnebago Industries, you're guaranteed the best location possible — anywhere you have customers. We design and manufacture custom vehicles in a variety of models and sizes to meet your exact requirements. From mobile medical clinics to portable jails, we can put a commercial vehicle to work for you. Contact your dealer for more information.



*Winnebago Industries is making a big impact at raceways all across the country. A growing number of NASCAR® and NHRA® drivers are part of the Winnebago Motorsports Team, but this team isn't just for drivers. Many Winnebago Industries motor home owners have joined the team as well. The Winnebago Motorsports Team provides members with a quarterly newsletter, a racing merchandise catalog full of exciting products and the opportunity to participate in special on-track events at selected races. Winnebago Industries is proud to have been named the Official Motor Homes of NASCAR, but is even more proud of the Winnebago Motorsports Team and its growing membership.*

*For Sales and Service Information Contact:*

