

# Winnebago Warrior



How to spend more of your vacation on vacation.



25RU

You hear a lot of talk about the importance of quality time. But how many of us really have enough time for the people and pastimes we enjoy the most? That's why, when vacation finally rolls around, it's important to make every minute count.

That's one nice thing about having a Winnebago Warrior.<sup>®</sup> Because whether you're going for a week or a weekend, your vacation begins the second you pull out of the driveway. And you don't have to wait till you get somewhere else to start relaxing. You're already there.

The Warrior has everything you need in a motor home at a price that makes it comfortable to get into. And whether it's just the two of you on a weekend fishing trip, or the whole family on a summer vacation, you have more than just a room to come back to at night. You have a home.



"OUR FRIENDS LIKE TO RIB US ABOUT BEING TRENDSETTERS. IT ALL STARTED AFTER WE BOUGHT OUR WINNEBAGO WARRIOR. NEXT THING YOU KNOW OUR BEST FRIENDS FROM THE OLD NEIGHBORHOOD DECIDED TO GET ONE. THEN IT WAS MY BROTHER AND SISTER-IN-LAW. THEN THEIR NEXT-DOOR NEIGHBORS. NOW THERE ARE SIX COUPLES IN ALL, FRIENDS AND FAMILY, AND WE TAKE TRIPS TOGETHER EVERY YEAR. LAST YEAR WE MADE IT A GOLFING VACATION WITH STOPS IN ASHEVILLE, MYRTLE BEACH AND JEKYLL ISLAND."

Explore the wide open spaces in a motor home that has a few of its own.



25RU

It's a popularly accepted notion that a motor home that costs less, has less. But not the Warrior. It challenges your expectations of what an affordable motor home can be, from the hand-crafted cabinetry to the finely-appointed kitchen.

Throughout the variety of floorplans

you can choose from, you'll discover unexpected comfort.

It's no wonder. At Winnebago Industries, our long-standing commitment to manufacturing advances has set industry standards literally for decades. And our Home Comfort Design philosophy puts a continuous focus

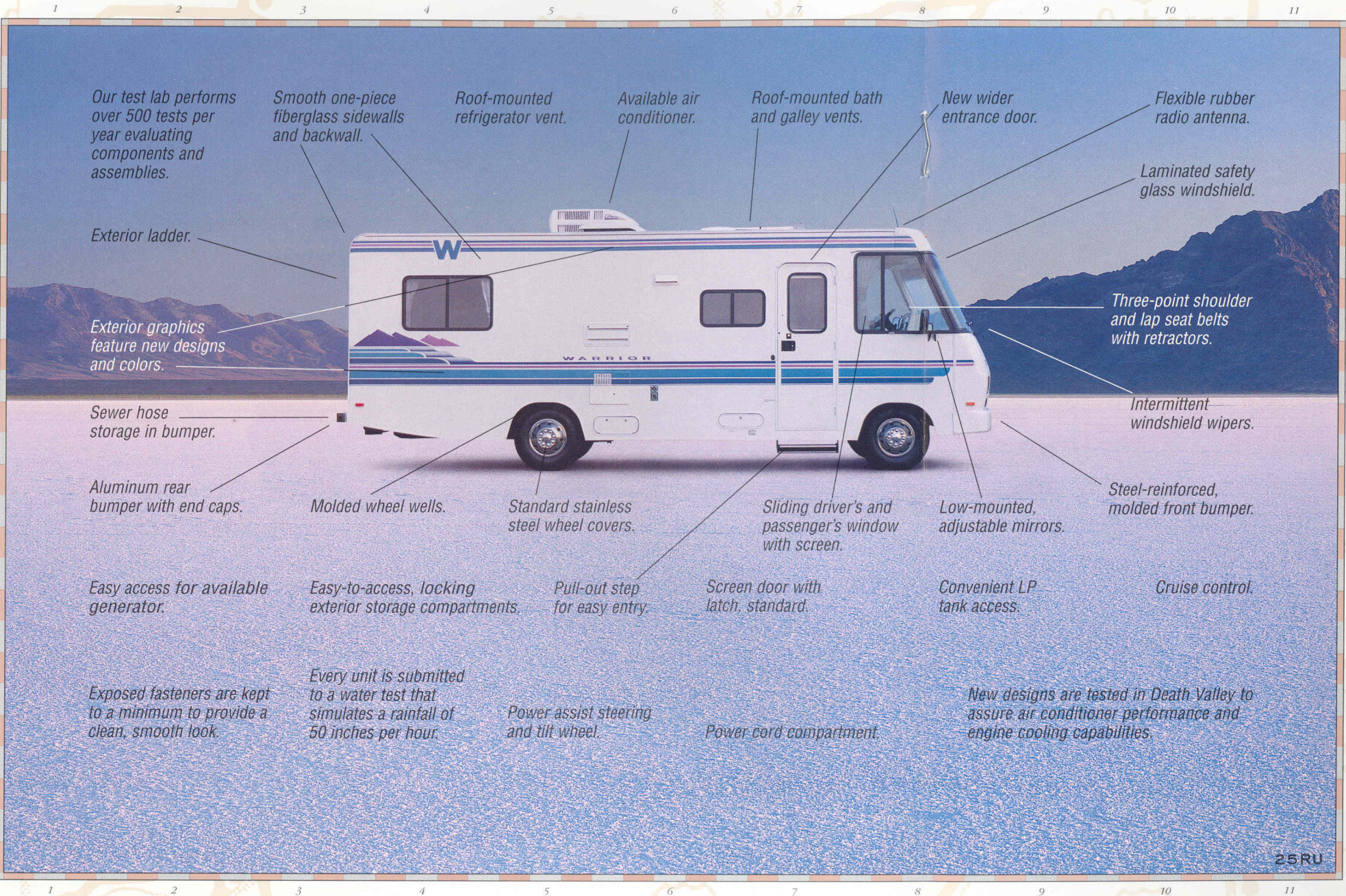
on creating a living space you can truly relax in. After all, isn't that what motorhoming is really all about?

We invite you to compare the Warrior to any motor home in its price range. Because the more motor homes you've looked at, the more you'll see in this one.



"OUR LAST FAMILY VACATION TOOK 350 YEARS TO COMPLETE. THE DRIVE DOWN U.S. 1 FROM MAINE TO FLORIDA TOOK US TO 14 STATES AND SOME OF THE MOST FAMOUS PLACES IN AMERICAN HISTORY. FROM PLYMOUTH ROCK TO INDEPENDENCE HALL. AND FROM CIVIL WAR BATTLEFIELDS TO SPACE-AGE LAUNCH PADS. THE KIDS TALKED TO COLONIAL SETTLERS IN WILLIAMSBURG AND SAW WHERE THE WRIGHT BROTHERS TOOK FLIGHT. BEST OF ALL, THEY DIDN'T EVEN REALIZE THEY'D SPENT THE WHOLE SUMMER STUDYING AMERICAN HISTORY."

We made room for everything except compromise.



Our test lab performs over 500 tests per year evaluating components and assemblies.

Smooth one-piece fiberglass sidewalls and backwall.

Roof-mounted refrigerator vent.

Available air conditioner.

Roof-mounted bath and galley vents.

New wider entrance door.

Flexible rubber radio antenna.

Exterior ladder.

Exterior graphics feature new designs and colors.

Sewer hose storage in bumper.

Aluminum rear bumper with end caps.

Easy access for available generator.

Exposed fasteners are kept to a minimum to provide a clean, smooth look.

Molded wheel wells.

Easy-to-access, locking exterior storage compartments.

Every unit is submitted to a water test that simulates a rainfall of 50 inches per hour.

Standard stainless steel wheel covers.

Pull-out step for easy entry.

Power assist steering and tilt wheel.

Screen door with latch, standard.

Power cord compartment.

Sliding driver's and passenger's window with screen.

Low-mounted, adjustable mirrors.

Convenient LP tank access.

New designs are tested in Death Valley to assure air conditioner performance and engine cooling capabilities.

Laminated safety glass windshield.

Three-point shoulder and lap seat belts with retractors.

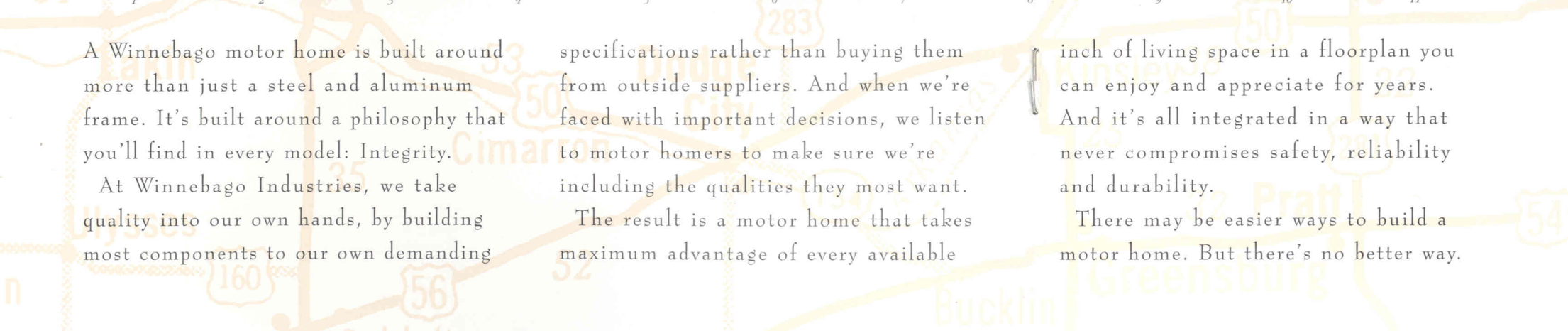
Intermittent windshield wipers.

Steel-reinforced, molded front bumper.

Cruise control.

25RU





A Winnebago motor home is built around more than just a steel and aluminum frame. It's built around a philosophy that you'll find in every model: Integrity.

At Winnebago Industries, we take quality into our own hands, by building most components to our own demanding

specifications rather than buying them from outside suppliers. And when we're faced with important decisions, we listen to motor homers to make sure we're including the qualities they most want.

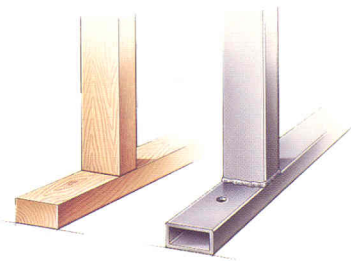
The result is a motor home that takes maximum advantage of every available

inch of living space in a floorplan you can enjoy and appreciate for years. And it's all integrated in a way that never compromises safety, reliability and durability.

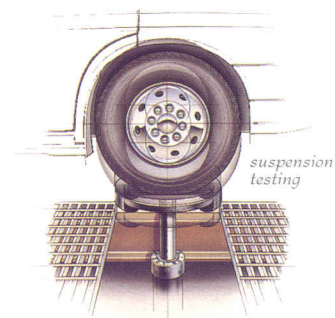
There may be easier ways to build a motor home. But there's no better way.



"ONE OF THE BEST TRIPS IN OUR MOTOR HOME WAS RIGHT IN OUR OWN BACKYARD. WE BELONG TO THE WINNEBAGO-ITASCA TRAVELERS CLUB. LAST YEAR THE KANSAS STATE WIT RALLY WAS RIGHT HERE IN SHAWNEE, AT THE EXPO CENTER JUST A SHORT WAY FROM OUR HOUSE. WE DROVE OUR WARRIOR OVER AND STAYED THERE THE WHOLE TIME. WE'D GO HOME TO CHECK THE MAIL, BUT OTHER THAN THAT, WE STAYED IN OUR WARRIOR AND ACTED LIKE WE'D DRIVEN HUNDREDS OF MILES TO GET THERE."



Believe it or not, some motor homes still use wood in their substructures. But each Winnebago motor home has a steel substructure for maximum strength and protection. It improves everything from the durability of your motor home to the way it handles. And that's the kind of solid feeling that's good to have after you've put a few miles behind you.



Our manufacturing process includes more safety checks, quality inspections and product testing than any other motor home builder. New designs are tested by computer, then subjected to our punishing on-site test track. And every single motor home that leaves our factory undergoes a systematic performance inspection of major systems, components and fit and finish.



Craving a hot snack at 3 a.m.? No problem. The Warrior's galley contains a microwave (with special equipment package) and a standard range top. Plus there's plenty of storage space and room to prepare your favorite foods.



A growing family will appreciate this extra sleeping space. The available pull-down bunk is ready to climb into faster than you can say "lights out." It's another example of how the Warrior maximizes space.



25RU

*The Warrior delivers a level of comfort you never dreamed possible for a motor home in its price range. For proof, just look at the finishing touches in the bedroom, from coordinated bedding and window treatments to a nightstand.*



25RU

*Camping no longer means living out of a duffel bag. This roomy wardrobe keeps your clothes clean and wrinkle-free.*



25RU

*The Warrior is designed to accommodate a growing family. For example, the dinette easily converts into a bed.*



25RU

*Power assist steering, a tilt wheel and cruise control add to the Warrior's drivability. Three-point shoulder and lap seat belts provide security and comfort.*



25RU

*Nothing like a hot shower after a day at the beach or on the golf course. In addition to a full size shower, this bath also has a roomy storage cabinet.*



25RU

*Even this molded storage bay is more than meets the eye. Its seamless corners help keep out dust, and the tall opening is designed for easier loading.*

# Winnebago Warrior Specifications

|   | 23RC          | 25RU          |
|---|---------------|---------------|
| <b>1995 WARRIOR</b>                     |               |               |
| Length                                  | 23'6"         | 25'4"         |
| Wheelbase                               | 137"          | 158.5"        |
| Fuel Capacity                           | 40 gals.      | 40 gals.      |
| Fresh Water Capacity w/Heater           | 36 gals.      | 60 gals.      |
| Holding Tank Capacity                   | 39 gals.      | 38 gals.      |
| LP Capacity                             | 42 lbs.       | 42 lbs.       |
| Exterior Height w/Roof Air <sup>†</sup> | 10'4"         | 10'4"         |
| Exterior Width                          | 8'            | 8'            |
| Interior Height                         | 6'5.7"        | 6'5.7"        |
| Interior Width                          | 7'7"          | 7'7"          |
| Exterior Storage                        | 37.68 cu. ft. | 14.58 cu. ft. |
| GVWR                                    | 11,800 lbs.   | 11,800 lbs.   |
| GVWR - Option                           | 12,300 lbs.   | 12,300 lbs.   |

- Standard
- Optional

|  | 23RC | 25RU |
|--|------|------|
| <b>AUTOMOTIVE</b>  |      |      |
| Chassis - Chevrolet - 7.4L 454 V-8 Fuel-Injected Gasoline Engine, Automatic Transmission w/Overdrive & Cooler, 630-CCA Battery/105-Amp. Alternator | ●    | ●    |
| Tires (Radial)   | ●    | ●    |
| Tire (Spare)   | ○    | ●    |
| <b>DRIVER CONVENIENCES</b>   |      |      |
| 12-V Electrical Supply/Lighter   | ●    | ●    |
| Battery Charge Control - Dual, Automatic   | ●    | ●    |
| Cab Carpet   | ●    | ●    |
| Cruise Control   | ●    | ●    |
| Curtain w/Track - Front Wrap-Around  | ●    | ●    |
| Heating/Air Conditioning - Flow Control System   | ●    | ●    |
| Hood Release - Exterior Key Locks  | ●    | ●    |
| Mirrors (Rear View) - Low Mounted  | ●    | ●    |
| Seats - Hinged Armrests, Seat Belts, Swivel/Slide Pedestal, Recline, Fabric Construction   | ●    | ●    |
| Steering - Power Assisted w/Tilt Wheel   | ●    | ●    |
| Sunvisors  | ●    | ●    |
| Windows (Driver & Passenger) - Sliding, w/Screens  | ●    | ●    |
| Windshield Wipers (Intermittent)   | ●    | ●    |
| <b>INTERIOR</b>  |      |      |
| Antenna (Radio) - Roof-Mounted, Flexible Rubber  | ●    | ●    |
| Bunk - Front Pull-Down   | ○    | ○    |
| Carpeting w/Pad - Selected Areas   | ●    | ●    |
| Ceiling Lights   | ●    | ●    |
| Ceiling Vent - Non-Powered, Galley   | ●    | ●    |
| Ceiling Vent - Non-Powered, Bathroom   | ●    | ●    |
| Color Themes (Interior) - Choice of Ocean Reef (Blue), Silverado (Grey)  | ●    | ●    |
| Divider Curtain  | ●    | ●    |
| Speakers (4)   | ●    | ●    |
| Storage - Front Overhead Shelf   | ●    | ●    |
| <b>GALLEY</b>  |      |      |
| Counter Extension - Flip Up  | ●    | ●    |
| Range Hood - w/Light, Vent   | ●    | ●    |
| Range Top  | ●    | ●    |
| Refrigerator - Single Door   | ●    | ●    |
| Sink (Double) - Stainless Steel, w/Countertop Cover  | ●    | ●    |
| Storage - Below Dinette Seat   | ●    | ●    |

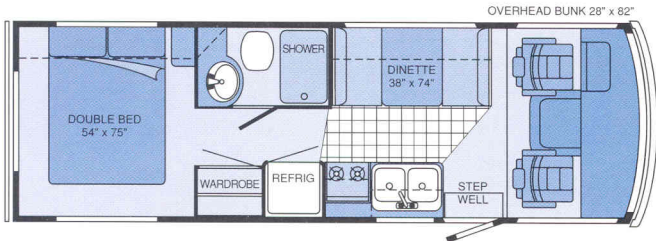
- Standard
- Optional

|  | 23RC | 25RU |
|--|------|------|
| <b>BEDROOM</b>   |      |      |
| Beds/Spread(s), Pillows (2), Pillow Shams (2)  | ●    | ●    |
| Double Bed - Underbed Storage (Outside Access on 23RC)   | ●    | ●    |
| Twin Beds w/Overhead Cabinet Bunks - Underbed Storage (Right Side Only) w/Prop Rod   |      | ○    |
| Wardrobe - Wooden Clothes Rod, Drawers   | ●    | ●    |
| <b>BATHROOM</b>  |      |      |
| Lavatory Cabinet   | ●    | ●    |
| Medicine Cabinet - Mirrored Door   | ●    |      |
| Medicine Cabinet - Wood Door   |      | ●    |
| Mirror - Wall Mount  |      | ●    |
| Shower - Flexible Shower Head, Wet Bath Paneling   | ●    | ●    |
| Shower Curtain - w/Track   | ●    | ●    |
| Sink - Large Oval, Ledge Back  | ●    | ●    |
| Skylight   | ○    |      |
| Tissue Holder - Surface Mount  | ●    | ●    |
| Toilet - Marine Style  | ●    | ●    |
| Towel Bar  | ●    | ●    |
| Towel Ring   | ●    |      |
| <b>EXTERIOR</b>  |      |      |
| Awning Rails - Both Sides  | ●    | ●    |
| Entrance Door Locks (2) - Latch, Deadbolt  | ●    | ●    |
| Entrance Door Step (Manual)  | ●    | ●    |
| Entrance Door w/Screen Door  | ●    | ●    |
| Graphics   | ●    | ●    |
| Sewer Hose Storage Area - in Rear Bumper   | ●    | ●    |
| Storage Compartments - Through Floor   | ●    | ●    |
| Tire Tools - Wrench, Leverage Bar  | ●    | ●    |
| <b>SYSTEMS</b>   |      |      |
| Air Conditioner - Roof, 13,500-BTU   | ○    | ○    |
| Air Conditioning Wire Path   | ●    | ●    |
| Battery (Auxiliary) - Deep Cycle   | ●    | ●    |
| City Water Hook-Up   | ●    | ●    |
| Electrical Control Center - Automotive DC Fuses, AC Circuit Breakers (100 & 110 VAC), 9-Amp. Battery Charger/32-Amp. Converter   | ●    | ●    |
| Furnace - Electronic Ignition, 19,000-BTU  | ●    | ●    |
| Furnace Ducting System - Flexible, above Floor   | ●    | ●    |
| Generator - 4,000-Watt   | ○    | ○    |
| LP Tank - Permanent Mount w/Gauge  | ●    | ●    |
| Monitor Panel - Holding Tank Level, Battery Condition Gauge, Water Pump Switch, Located in Galley  | ●    | ●    |
| Power Cord - 30 Amp.   | ●    | ●    |
| Water Heater - 6-gal., Manual Ignition   | ●    | ●    |
| Water Pump (Demand)  | ●    | ●    |
| <b>SAFETY</b>  |      |      |
| Assist Strap - Interior  | ●    | ●    |
| Carbon Monoxide Detector/Alarm   | ●    | ●    |
| Fire Extinguisher (10-B.C.)  | ●    | ●    |
| Ground Fault Interrupter   | ●    | ●    |
| LP Leak Detector/Alarm   | ●    | ●    |
| Smoke Detector/Alarm   | ●    | ●    |
| Three Point Seat Belts   | ●    | ●    |
| <b>SPECIAL EQUIPMENT</b>   |      |      |
| Preferred Package - AM/FM Radio w/Cassette Deck, Microwave Touch Control, Flooring (Vinyl - Galley & under Dinette Table), TV Antenna (Amplified), Auxiliary Start Circuit, Class II Trailer Hitch, Wheel Covers - Stainless Steel, Ladder | ○    | ○    |

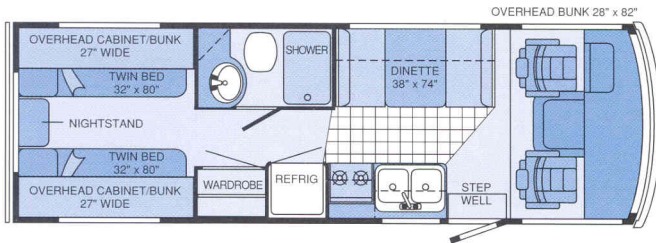
<sup>†</sup>The height of each model is based on the curb weight of a typically equipped unit on the standard chassis. The actual height of your vehicle may vary by as much as 2" depending on chassis or equipment variations.

\*Not all options available in combinations. See dealer for details. Winnebago Industries' continuing program of product improvement makes specifications, equipment, model availability and prices subject to change without notice.

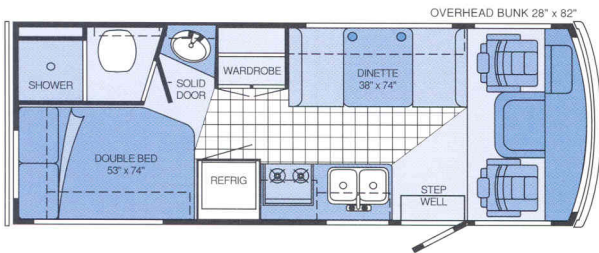
# Choose from a variety of floorplans.



| 1995 WARRIOR 25RU |         |                               |         |
|-------------------|---------|-------------------------------|---------|
| Length            | 25'4"   | Holding Tank Capacity         | 38 gal. |
| Wheelbase         | 158.5"  | Fresh Water Capacity w/Heater | 60 gal. |
| Fuel Capacity     | 40 gal. |                               |         |



| 1995 WARRIOR 25RU (BUNK OPTION) |         |                               |         |
|---------------------------------|---------|-------------------------------|---------|
| Length                          | 25'4"   | Holding Tank Capacity         | 38 gal. |
| Wheelbase                       | 158.5"  | Fresh Water Capacity w/Heater | 60 gal. |
| Fuel Capacity                   | 40 gal. |                               |         |



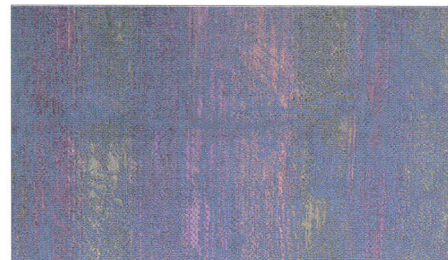
| 1995 WARRIOR 23RC |         |                               |         |
|-------------------|---------|-------------------------------|---------|
| Length            | 23'6"   | Holding Tank Capacity         | 39 gal. |
| Wheelbase         | 137"    | Fresh Water Capacity w/Heater | 36 gal. |
| Fuel Capacity     | 40 gal. |                               |         |

Note: Dimensions shown are for sleeping space only and dashed lines denote overhead storage area.

# Choose the colors that match your spirit of adventure.



Ocean Reef



Accent



Carpet



Silverado





Accent



Carpet



A Winnebago motor home is more than just a great investment. It's a ticket to a world of fun, camaraderie and support. Foremost is our Winnebago-Itasca Travelers (WIT) Club. The WIT Club lets you meet other Winnebago Industries motor home owners and access unique club services like professional trip routing and mail forwarding.

When you join the Winnebago Motorsports Team you'll be right at home at racing events across America. Winnebago has been designated the Official Motor Homes of  and is closely associated with several NHRA drag racing teams.  Also, a growing number of NASCAR and NHRA drivers are involved with the Winnebago Motorsports Team. Motorsports members enjoy many benefits including a quarterly newsletter, a racing merchandise catalog and the opportunity to participate in special on-track events at selected races.



Down the road, factory support is never far behind. Twenty-four-hour emergency road service pays for towing to a factory authorized dealer at no cost to you. With over 20,000 locations throughout North America, quality assistance is just a phone call away with our Preferred Care Program. Plus, our warranty program is one of the most comprehensive in the industry, starting with 12-month or 15,000-mile protection. In addition, a 10-year limited warranty protects the roof and walls.

If you'd like to know more about Winnebago and our motor homes, we invite you to visit one of our outstanding dealers, or visit us at our headquarters in Forest City, Iowa. Just call us at (515) 582-3535 for a free factory tour.

