

**CHIEFTAIN 1984
FOR PEOPLE WHO WANT RATIONAL REASONS
TO BUY A LUXURY MOTOR HOME.**



A MOTOR HOME THAT CAPTURES YOUR HEART WITHOUT CLOUDING YOUR THINKING.

The Winnebago® Chieftain®. Tour its plush interior. Then look at its price tag. Suddenly, it will become clear that Chieftain for 1984 is the best value in motor homing. It's designed to appeal to your desire



for luxury. But it's priced to satisfy your practical side. So you don't have to settle for a

dull motor home just because it fits your budget. Or an extravagant motor home that you really can't afford. You can get Chieftain.

Chieftain is soft and rich inside, sleek and stylish outside. The kind of motor home that will capture your heart the minute you look at it. That makes buying one a truly emotional purchase you can make for purely rational reasons. Because you'll find the price comfortable, just like the motor home.

One of the ways we improved Chieftain this year was simply to make more of them. With four new models added to the Chieftain line, our best value now comes six ways. That's more choices than we've ever offered before. More sizes and more floorplans.

Lengths start at twenty-two feet and run all the way up to our big 33-footer. Plus four models in between. So you can get almost any floorplan that suits your needs.

If you want a motor home

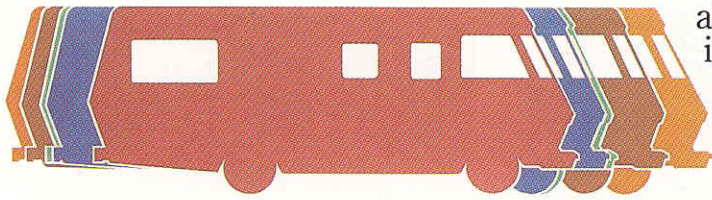
with a rear dinette, Chieftain's got it. Or if a full sized rear bedroom is more to your liking, Chieftain's got that, too. And, of course, each model has several mix and match layout options for arranging your home on the road.

No matter which length or floorplan you select, you'll be

getting pure Chieftain from the the smart wrap-around front bumper to the impact resistant spare tire cover.

You'll find the spacious interiors that have always been the benchmark of Chieftain. Winnebago designers are skilled at fitting a lot into a motor home without making it a tight fit for you, too. That gives Chieftain an abundance of space for standing up, sitting down





22RC 26RB 26RH 27RU 30RC 33RU

and stretching out.

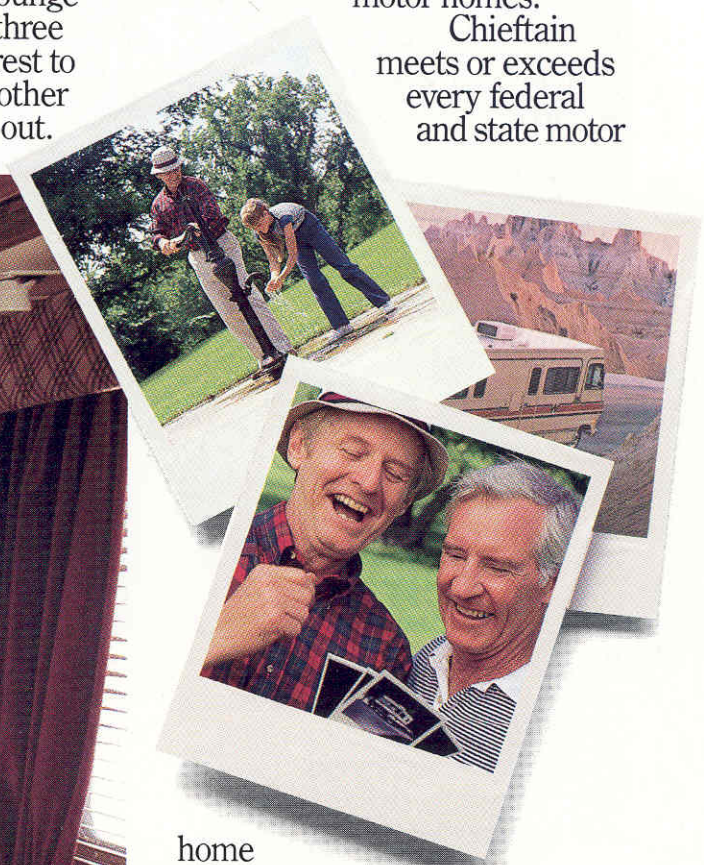
Our designers have made a lot of enhancements to Chieftain for 1984. We did things like add a separate pad underneath our

already thick carpeting. It's a method used in many homes to improve wear and comfort. So it seemed a logical refinement for Chieftain. And

we took our swiveling lounge chairs and made them three inches wider from armrest to armrest. Plus a host of other refinements inside and out.

We've maintained our solid principles of construction and quality control in every Chieftain we've built. All six of the new Chieftains are computer analyzed for stress and weight distribution. So they're more than comfortable motor homes. They're safe motor homes.

Chieftain meets or exceeds every federal and state motor



home safety code written. And Winnebago engineers treat your demands for comfort with the same thoroughness.

So you'll not only feel good in your Chieftain. You'll feel good about your Chieftain.

It's just another way Chieftain appeals to both your emotional and practical sides. So get a Chieftain for the luxury. Or get a Chieftain for the quality. Either way, you'll get an outstanding value.

Interior shown from Chieftain 30RC.

A GOOD DEAL MORE THAN JUST A GOOD DEAL.

You really begin to appreciate the value of Chieftain when you see how much we put into it. We've combined lots of great features to give you a motor home that looks good, feels comfortable and functions well.

Appearance isn't everything, but it's a good place to start when you're building a luxury motor home. So we started with the Chieftain exterior.

We put on a fiber-glass front end behind a stylish wrap-around bumper. And the new graphics complement the sleek radius cornered windows and door.

Step inside the Chieftain. Right away you'll notice the care and craftsmanship we put into our interior design.

You'll be surrounded by thick carpeting, rich upholstery and fine woodwork. The decor

is as handsome as you would find in any home.

Coordinated colors throughout set the tone for finer appointments. Like tri-level wall lamps, radius edged cabinetry and optional woven wood blinds. Even the door

window shade is housed in a decorative shelf and valance.

But you'll want to do more than look at your Chieftain. You'll want to relax in it. So we did everything we could to make it the most comfortable motor home you've ever been in.

Starting with the driver's compartment, you'll find comfort at every turn. Plush, reclining seats with armrests,



power steering and an automatic transmission make driving in the front of the Chieftain almost as fun as relaxing in the back.

The padded dash has a low glare finish to soothe your eyes on sunny days. In addition, the double hinged visors are adjustable to just the right spot. And at night, a blackout curtain separates the cab from the rest of the motor home to reduce windshield reflections from internal lighting. Plus it can serve as a privacy curtain.

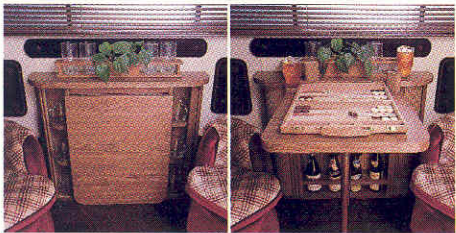
At the end of the driving day, an optional front overhead bunk can increase your sleeping



capacity. Just pull it down over the front seats.

The rest of the Chieftain will cradle you in softness from the lounge chairs to the beds. The Flexsteel® convertible couch available in many Chieftain models may be the most comfortable piece of furniture ever put inside a motor home.

We'll keep you even more comfortable with our quiet Blend-Air Temperature Control System. Or if you would rather enjoy the fresh air, our windows are double sliding to give you more natural ventilation.

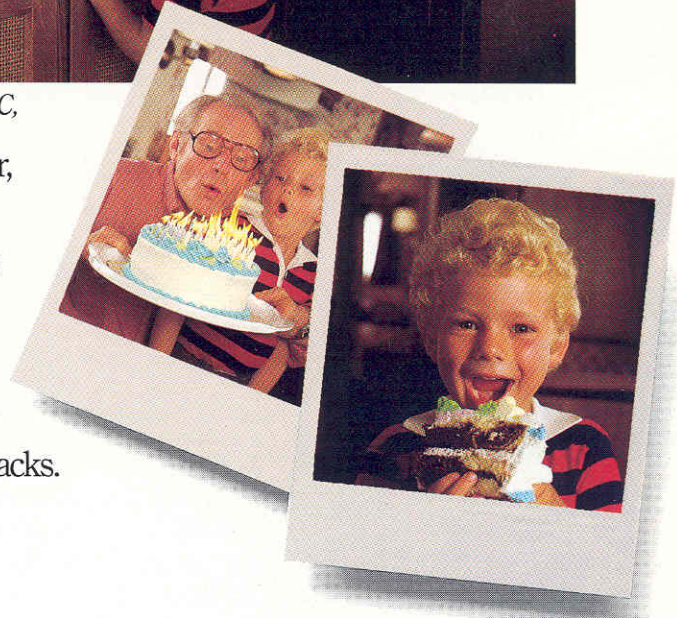


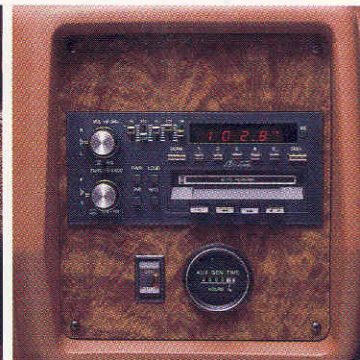
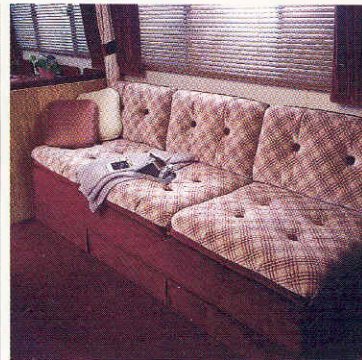
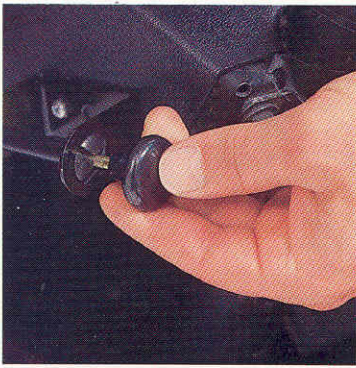
The first time you use the galley, you'll be pleasantly surprised at how much working space we can give you without putting anything out of reach.



Galley as shown available in 22RC, 30RC and 33RU.

The large refrigerator, stainless steel double sink and four-burner stove are arranged as functionally as you have them at home. And you can even supplement the conventional oven with an optional touch control microwave oven for quick meals and snacks.





Top row L to R: Interior hood release; wardrobe with drawers and door-activated courtesy light; quick-locking spare tire cover; knick-knack shelf and pull-down shade over door window. Bottom row: Brushed brass-tone faucet; overhead cabinet door prop; Flexsteel brand convertible couch; electronic-tuning AM/FM cassette stereo option.

Yet with all these features, we still left enough room in the galley for storage. Besides the spacious cabinets, look under the sink and you'll see that we carefully route our plumbing to maximize shelf storage as well. Many models also have a roll-out pantry with wire baskets that are rubber coated to stay quiet.

The generous wardrobe provides plenty of storage for clothing and other personal effects. And we added extra drawers at the base for smaller items in some models.

Next, look into the bathroom. With brushed brass-tone fixtures, an oak stile and rail medicine cabinet and a flush mounted door with a real doorknob, the bath has a look fit for the Chieftain.

The tub/shower is a completely new design this year. All three walls and the ceiling



Bathroom shown 22RC & 30RC.

are molded from a single piece of strong ABS plastic for leak resistance. And the shower curtain isn't a curtain at all, but a sturdy folding door that's easier to operate and clean.

And when you're not showering, you can use the removable clothes rod for temporary storage or drip drying.

You'll encounter an abundance of features on the outside of the Chieftain as well. With the electric step option, the entrance step goes in and out automatically as you close and open the door. And whenever you turn on the ignition it comes in by itself, even if you've locked it into place. So you can't drive away with it out.

The entrance door has a screen door so you can let



Bedroom as shown available in 33RU.

the air in without letting everything else in, too.

Some of the nicest features about our Chieftain are things you may never even see. But you'll be glad they're included. Our rotocast wheel wells can take all the road salts and rock chips a highway can dish out.

And no one else makes seamless holding tanks like ours.

We design them to fit our motor homes, not the





Top row L to R: Eye-level refrigerator controls; dinette storage; dual-locking exterior storage; drawers under sink. Bottom row: Sewer hose compartment; microwave oven and monitor panel; roll-out pantry; oak beverage tray.

other way around.

Then there's our aluminum sub-flooring. It's probably the main reason we don't offer standard rust-proofing. After all, aluminum doesn't rust. And our roof doesn't leak. It's all one piece, carefully joined to the sidewalls for a tight seal.

After you've looked through the entire Chieftain, there's still one more feature that may be the most pleasant of them all. The price. Even with all the details you've just read about, and countless others too numerous to mention here, we've kept our prices lower than you'd expect. So you can get a whole lot

of motor home for not a whole lot of money.

A lot of people call that value. At Winnebago, we call it Chieftain.



HOW WE BUILD OUR MOTOR HOMES IS HOW WE BUILT OUR REPUTATION.

When you buy a Winnebago motor home, you're purchasing more than a great motor home. You're purchasing the Winnebago reputation. It's the most famous in the industry for sound construction, efficient design and quality materials.

By pioneering the application of computer technology to motor home design and manufacture, we're making our reputation even better. Our computer aided design (CAD) capabilities allow us to develop design solutions for more effective use of space and materials. And we've been doing sophisticated load and stress analyses by computer for years.

We've made the same state-of-the-art advances in our manufacturing facilities as we have in our design center.

Our computer controlled punch press gives us extreme precision in parts production.

And with four 1,000 foot conveyor-fed assembly lines, no other motor home builder even comes close to our production capabilities.

Then again, no other motor home builder is a manufacturer like Winnebago. Every other company that puts motor homes together is doing exactly that. Putting them together. Assembling, not manufacturing.

That can make a big difference. Close to 80 percent of everything we put into our motor homes we make ourselves.

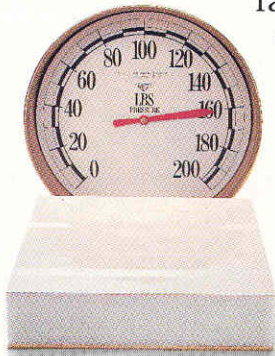
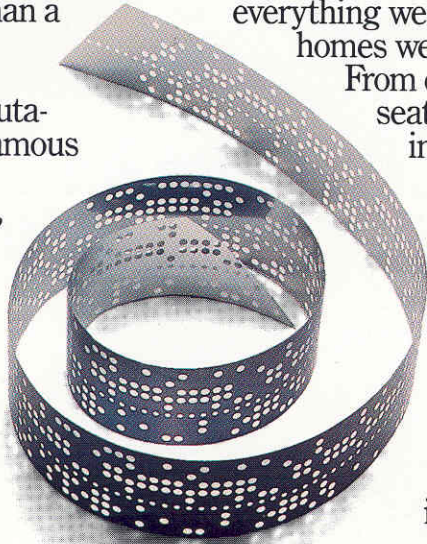
From doors to driver's seats and from holding tanks to window trim. So we don't have to design our motor homes to fit a lot of off-the-shelf parts.

Instead, we design them to fit something much more important. You.

Of course, there are certain parts, like appliances, that we buy just as everyone else does. But, unlike everyone else, we don't buy name brands just for their names. Our test lab runs performance evaluations on everything from refrigerators to radios to TV antennas.

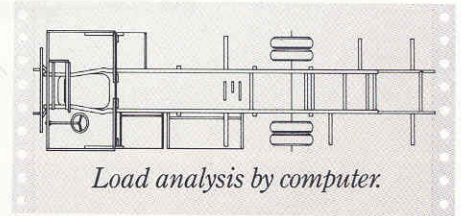
Only the best ever sees the inside of a Winnebago. We're no less discriminating about the parts we make ourselves. Even

the samples of our proven ThermoPanel® sidewalls get tested weekly for lamination strength. We measure the amount of force it takes to pull them apart. A two inch square block

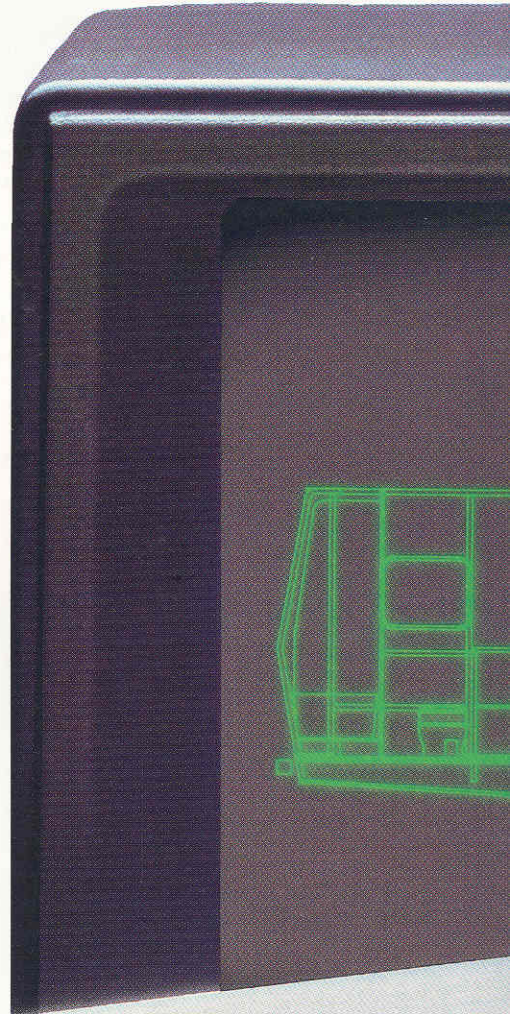


takes up to 160 pounds. And the interior stock usually gives way before our adhesives do.

A special heat chamber is used to check our molded plastic parts under temperature ex-



tremes ranging from 100° below to 400° above. And we test our paint finishes for chip resistance by bombarding test parts with



gravel thrown at 60 miles an hour. Our lab also runs vibration tests, 600-hour salt spray tests and weight distribution tests.

Then there's our celebrated drop test. A free fall onto the pavement. Upside down. To make sure nothing becomes buckled, unbolted or unsafe. Nothing does, thanks to steel tie-downs on our appliances and an eighteen gauge structural steel frame supporting our sidewalls and roof.

You'll also find steel in the driver's compartment. Steel flooring and a steel firewall totally



isolate the driver and passenger from the engine. Plus a steel frame enclosure on the top,

bottom, front and sides protects the cab.

And when you load up your motor home for a trip, you won't have to worry about exceeding the Gross Vehicle Weight Rating. Because we designed in lots of extra payload capacity. And we organized the storage areas and holding tanks so even when fully loaded you'll have near-perfect weight distribution.

It's obvious that we pay attention to a lot of details when we build a motor home. To make sure nothing gets overlooked, we've got thirty quality control specialists inspecting everything from welding to wheel balancing. And our volunteer Quality Circles are always looking for ways to build motor homes



stronger and safer.

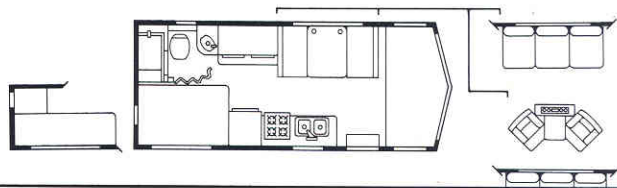
So Winnebago can give you even more than a piece of the good life. We can give you peace of mind.

We'll give you even more peace of mind with our 12 month/12,000 mile limited warranty and our optional 5 year/50,000 mile Traveler's Protection Plan.* So you can count on good times for a long time in a Winnebago.

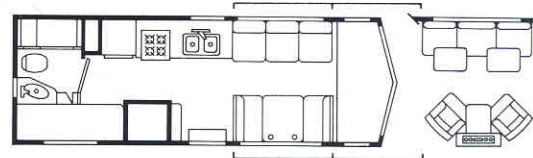
*Not available in Canada.

SPECIFICATIONS

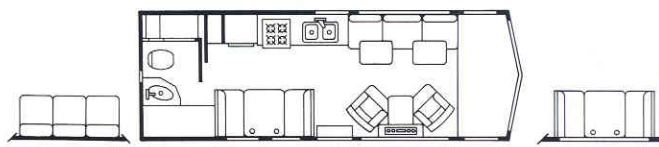
22RC



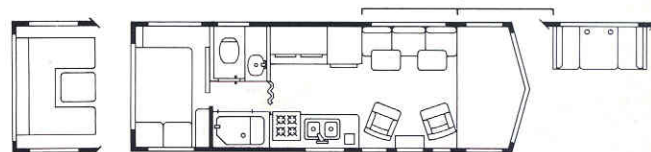
26RH



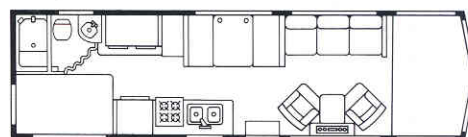
26RB



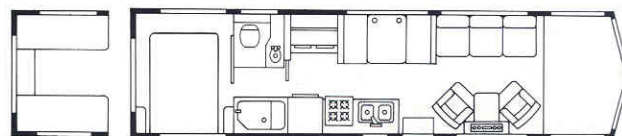
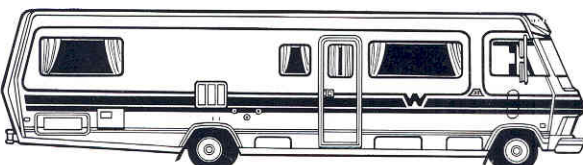
27RU



30RC



33RU



Length	Exterior Height (w/roof air)	Interior Height	Exterior Width	Automotive Battery (Amp/Hr)	Auxiliary Battery (Amp/Hr)	Fuel Capacity (Gal.)	Fresh Water Cap. (Gal. w/heater)	Holding Tank Cap. (Gal. Sewage/ Waste)	LP Capacity (lbs. STD/OPT)	Sleeping Capacity (STD/OPT)	GVWR	Wheelbase
22'6"	121"	77"	94.7"	80	90	40	53	32/25	42/80	3/4	11,800	137"
26'7"	120.6"	77"	94.7"	80	90	60	50	37/33	42/80	3/5	12,300	158.5"
26'7"	120.6"	77"	94.7"	80	90	60	48	37/33	42/80	5/6	12,300	158.5"
27'4"	120.6"	77"	94.7"	80	90	60	51	44/40	42/80	4/5	12,300	158.5"
30'1"	120.2"	77¼"	94.7"	80	90	60	58	44/42	80/NA	5/6	14,500	190"
32'8"	120.2"	77¼"	94.7"	80	90	60	72	44/40	80/NA	5/6	14,500	208"



FEATURES AND OPTIONS.

CHIEFTAIN

	22RC	26RB	26RH	27RU	30RC	33RU
AM/FM Cassette Stereo electronic tune	OPT	OPT	OPT	OPT	OPT	OPT
Cruise Control	OPT	OPT	OPT	OPT	OPT	OPT
24,000 BTU Furnace Electronic ignition	STD	STD	STD	STD	NA	NA
34,000 BTU Furnace Electronic ignition	OPT	OPT	OPT	OPT	STD	NA
45,000 BTU Furnace Electronic ignition	NA	NA	NA	NA	NA	STD
Microwave Oven	OPT	OPT	OPT	OPT	OPT	OPT
4,000 Watt generator w/13,500 BTU Roof air*	OPT	OPT	OPT	OPT	OPT	OPT
6,500 Watt generator w/13,500 BTU Roof air*	NA	NA	NA	NA	OPT	OPT
Deluxe Range hood monitor panel	OPT	OPT	OPT	OPT	STD	STD
Barometer/thermometer	OPT	OPT	OPT	OPT	OPT	OPT
Blend-Air temperature control system	OPT	OPT	OPT	OPT	OPT	OPT
TV Antenna w/jack	OPT	OPT	OPT	OPT	OPT	OPT
5 year/50,000 Mile Traveler's Protection Plan**	OPT	OPT	OPT	OPT	OPT	OPT
6.2 Liter diesel engine	OPT	OPT	OPT	OPT	NA	NA
Non-power stove, coach & bath vents	STD	STD	STD	STD	NA	NA
Powered stove, bath and coach vents	NA	NA	NA	NA	STD	STD
Hollow core bath door	NA	STD	STD	STD	STD	STD
Folding Bath door	STD	NA	NA	NA	NA	NA
Sliding dividers	NA	NA	NA	STD	STD	STD
Folding dividers	NA	NA	NA	STD	STD	STD
Roll out pantry	NA	NA	NA	STD	STD	STD
Flip-up Galley extension	STD	NA	NA	NA	NA	NA
Contoured front bumper	STD	STD	STD	STD	NA	NA
Rear painted formed bumper	STD	STD	STD	STD	NA	NA
Bright Front bumper	NA	NA	NA	NA	STD	STD
Bright Rear bumper	NA	NA	NA	NA	STD	STD

STANDARD EQUIPMENT

Automotive and exterior features:
80 Amp. battery, 6 RV tires, Transmission cooler, Tire tools, Intermittent wipers, Sunvisors, Cockpit window screens, Emergency start solenoid, AM/FM Cassette radio, Tilt steering wheel, Single deep cycle battery, Converter/battery charger, 110 volt exterior outlet, Lighted assist handle, Lockable water and gas fills, Sewer hose w/storage, All tinted windows, Rear view mirrors, Color coordinated graphics, Retractable entrance step, Dual lock exterior doors, Low back seat w/swivel-slide pedestals, 454 cu. in. V-8 engine

Appliances and interior features:
Refrigerator (3-way, gas, electric), 4-burner range w/oven, 6-gallon water heater, carpet, Demand water system, Lavatory (dual control faucets), Marine toilet, Tissue holder, Towel bar, Folding shower door, Stainless steel sinks (double) w/covers, LP Leak tester, Ground fault interrupter, Fire extinguisher, Screen door, Entrance door window w/pull shade, Spice rack, Magazine rack, Interior assist strap, Curtains, sheers, shades w/valances, Trash container, Cup holders in dinette, Shower/Tub with flexible shower head, Medicine cabinet, Blackout curtains

*With diesel option, optional generator is LP-fueled.

**Not available in Canada.

Winnebago's continuing program of product improvement makes specifications, equipment, model availability and prices subject to change without notice. Some items shown may be extra cost options.



For Winnebago sales & service, contact:

★ THE ★ UNBEATABLE ★ WINNEBAGO ★