

**ONLY WINNEBAGO WOULD TAKE A HOT SELLING
MOTOR HOME AND TURN IT INTO A REAL SLEEPER.**



★ THE ★ UNBEATABLE ★ WARRIOR ★

THE 1983 WARRIOR.[™] THE UNIQUE NEW DRIVING EXPERIENCE.



Not so long ago, the Winnebago[®] Warrior caught the rest of the motor home industry unprepared.

While other manufacturers were still struggling to develop efficient lightweight models, the Warrior was already winning fuel economy runs and the hearts of motor homers all across America.

Since then, not much has changed. The Warrior is still miles ahead of the competition. It remains unchallenged by anything its size for maneuverability, gas mileage and the sheer enjoyment of driving.

But for 1983, the original Warrior is joined by an innovative new version. The Warrior Plus 2.

Streamlined and fuel efficient like its predecessor, the Warrior Plus 2 offers the added livability of a full sized cab-over bunk. Incredibly, this 22-foot unit gives you comfortable sleeping capacity for six adults. It also gives you an interior that looks and feels as luxurious as what you'll find in many motor homes selling for twice the price.

Step inside the Plus 2 and see for yourself. The sprung couch, the swiveling bucket seats in the cab and the dinette cushions are all contemporary pillow style. Just



like today's best furniture. They're well made of supersoft Dacron-wrapped foam, covered with plush fabrics searched out and acquired by Winnebago directly from the mill.

The storage cabinets are a special treat, too. Not just because there are so many of them, but because of their old fashioned craftsmanship. Cabinet doors are constructed of oak with an attractive cane-design insert.

You'll see more oak on the wardrobe, the vanity and the medicine chest. All in all, the Warrior Plus 2 is a richly furnished home away from home.

Yet you needn't be rich to buy a Plus 2 or to keep one filled with fuel on a long trip.



Of course, for all the appeal of the Warrior Plus 2, we certainly wouldn't want you to overlook the original Warrior. It, too, features lush fabrics, thick carpeting, handsome wall coverings and floor plans that make every inch count.

You can choose your Warrior with a sprung couch up front or a handy set of bunk beds in the rear. Either way, combined with the large dinette bed, you'll sleep four comfortably.

Or you can expand your sleeping capacity to five or even six with two Warrior options. There's a pull down bunk or a youth bed which fits across the cab seats. Its galley is equipped with top name appliances and a surprising amount of elbow room. However, the Warrior is above all else a highly efficient, proudly engineered driving machine. It lures you behind the wheel with its responsive handling. Its sleek front end forms a low wedge, slicing through the air cleanly.



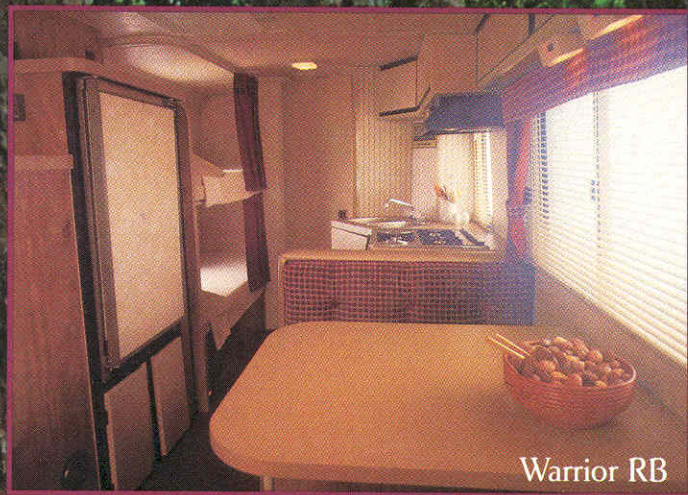


WARRIOR





X WINNEBAGO



Warrior RB

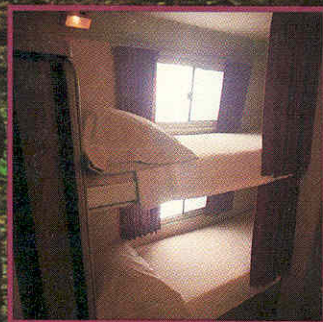
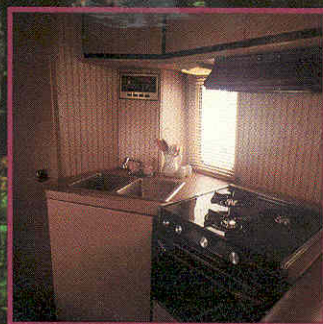
The Warrior performs unlike any motor home you've ever driven. In fact, it's more like the family car.

Part of this agility is due to the Warrior's near-perfect balance. Part is due to its amazing new Chevrolet chassis. But mostly it is innovative design and engineering which give the Warrior such exceptional maneuverability and year 'round usability.

If there is one thing the Warrior lacks, it is unnecessary weight. The Warrior is 36% lighter than comparable motor homes. Yet it is still solid and sturdy. The structural integrity of its aluminum framework was analyzed by computer and dramatically confirmed by Winnebago's exclusive drop test.

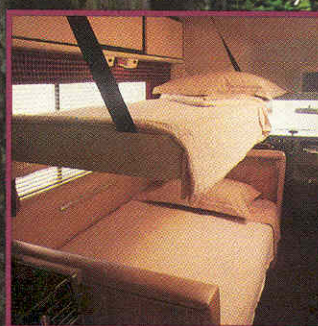
If you're looking for a motor home that offers both living efficiency and driving efficiency, you've easily found it in both the Warrior and the Plus 2. The hard part will be deciding between them.

Both come with some special features we haven't yet mentioned. Like an eye-opening amount of visibility for



the driver and co-pilot. Or a much appreciated AM/FM multiplex stereo system with cassette player and four 10-ounce speakers. It's standard equipment, of course.

Also standard on both models are high beam halogen headlamps, tinted windows all the way around, tilt steering wheel and an emergency start solenoid that will give you cranking power from both batteries if you ever need it.

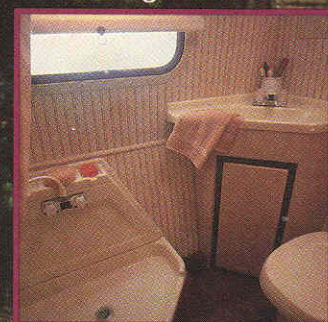


You'll also find some enticing options to give either motor home an extra amount of comfort.

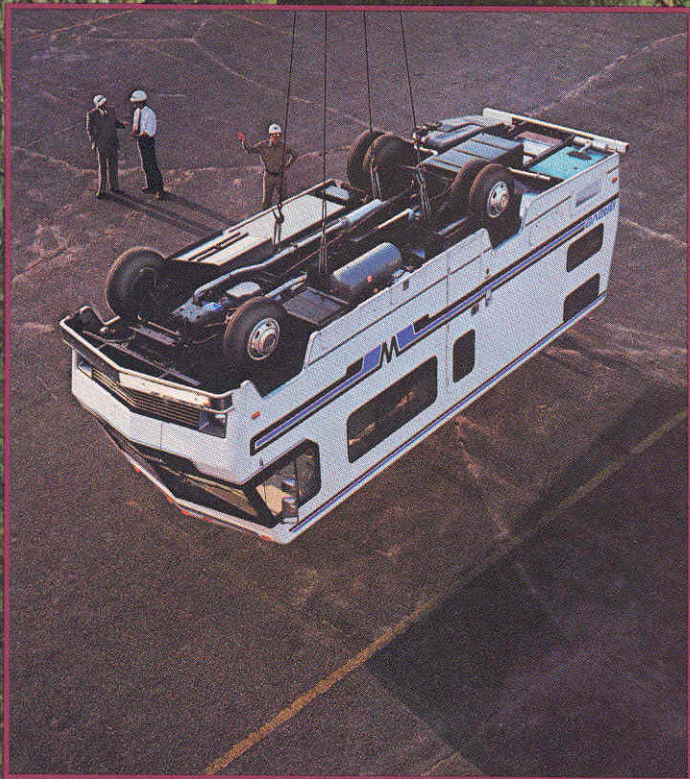
Our deluxe feature package might light up your life. It gives you lights on the floor, in the wardrobe, plus reading lights and a porch light. It also includes a deluxe monitor panel which shows the levels of all holding tanks and LP fuel, and contains a digital alarm clock for the fisherman in your family.

There are also options to pamper the driver. Like automotive air conditioning. Cruise control. And a luxury cab group with plusher seats, deluxe door trim panels, intermittent wipers and a unique overhead instrument panel.

A final option will make even the Warrior and Warrior Plus 2 more economical to drive. It's Winnebago's exclusive WinnAir™ Dual Fuel System. This proven system enables you to change from gasoline operation to liquid propane at the flick of a switch. Propane offers the advantage of costing much less than gas in most areas of the U.S. Of course, the nicest thing about both the Warrior and the Plus 2 is that they don't need a single option to be totally inviting. Compare them yourself. See if these two uniquely efficient motor homes aren't miles ahead of the competition.



**MOST MANUFACTURERS
DON'T OFFER 5 YEAR /50,000
MILE PROTECTION.
MAYBE THEY KNOW SOMETHING
YOU DON'T.**



**OUR DROP TEST SHOULD BE
AN INDUSTRY STANDARD.
INSTEAD, IT'S AN
INDUSTRY EXCLUSIVE.**

Where your safety is concerned, we drop everything. Including our motor homes. It's a test every new Winnebago model has to pass before it can reach the assembly line.

We lift a fully loaded motor home into the air, and drop it. Upside down.

After the dust has settled, we check the results against a rigid set of standards for structural integrity. If the motor home fails in any area, it's back to the drawing board.

If our drop test sounds dramatic, maybe that's why only Winnebago has the confidence to perform it.

Yet it's only one of many ways in which every Winnebago motor home meets or exceeds all federal and state safety codes.

There can be no compromise. Because we will not lower our standards to meet the code or the competition.



50,000 mile Traveler's Protection Plan.

Now the truth is, all the other manufacturers could offer this same protection. But they don't. And that might make you wonder how much faith they have in the dependability of their product.

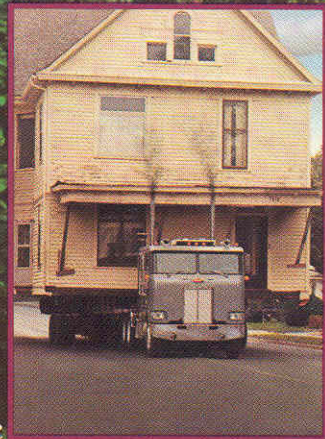
**SOME PEOPLE WOULD
HAVE YOU BELIEVE
THIS IS A MOTOR HOME.**

Some manufacturers have gotten carried away. Their motor homes come with closed circuit TV systems. Food processing centers so complex you practically need to take along an instructor. Even heavy cedar closets.

They seem to have remembered everything. Except that a motor home shouldn't cost as much as a house to buy. Or to move. At Winnebago, we think a little differently than our competition.

Our Warrior was designed to be every bit as sensible as it is comfortable. We made it as much fun to live in as to drive. And gave it good mileage to squeeze gas and stretch weekends.

Now that's what we call a motor home.





**WITH SOME MOTOR HOMES,
THE POSSIBILITY OF FINDING
SERVICE IS REMOTE.**

A motor home is not meant to stay parked in the backyard any more than you are. Yet, with some brands every time you leave home, you leave behind practically any chance of finding authorized dealer service.

In fact, an ordinary trip can easily leave you half a continent away from the nearest dealer.

Compare that to Winnebago. As America's largest motor home manufacturer, we've built a vast network of experienced dealers coast to coast across the U.S. and Canada.

Anything less than that doesn't seem to make sense. Not even remotely.

**MAYBE YOU WOULDN'T BE
LOOKING FOR A NEW
MOTOR HOME IF YOUR OLD
ONE WAS A WINNEBAGO.**

Some motor homes that look great in the showroom can lose their good looks almost overnight. Because that's all the time it takes you to uncover the bugs.

But built into every Winnebago is a standard feature that will keep you happy with your purchase for years to come. A feature that gives Winnebago owners their high loyalty, and repays them with a high resale price. Quality.

Quality helped make us America's favorite motor home. And quality will keep us there.



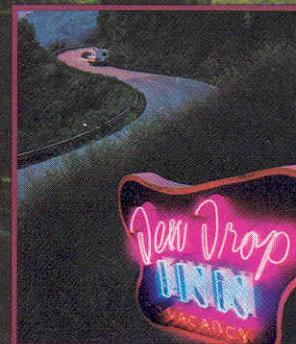
**THEY SAY YOU HAVE TO PAY A LOT
TO GET A LOT OF MOTOR HOME.
HERE'S WHAT WE SAY TO THAT.**

Bull. How can a motor home be comfortable when the price hurts?

The surprisingly affordable Winnebago is proof that a motor home needn't be remarkably expensive to be remarkably good.

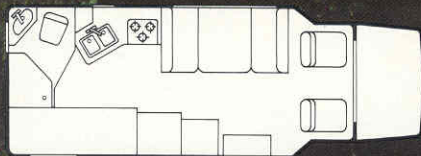
**IN A FEW YEARS, THIS COULD BE
OUR MAIN COMPETITION.**

Lots of motor home manufacturers have gone out of business. More than half of them since 1977. To make sure that your brand isn't next, don't buy just a motor home. Buy a motor home company. Winnebago.

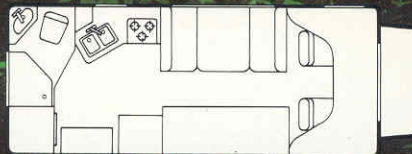


THE UNBEATABLE WARRIOR

EQUIPMENT	WARRIOR RB/RN	PLUS 2 RB/RH	SPECIFICATIONS	WARRIOR RB/RN	PLUS 2 RB/RH
AM/FM/cassette stereo	STD	STD	Length	22'1"	22'1"
Cruise control	OPT	OPT	Exterior height (w/roof air)	116.4"	116.4"
Tilt steering wheel	STD	STD	Interior height	75"	75"
24,000 BTU furnace (electronic ignition)	STD	STD	Exterior width	91.3"	91.3"
4-Burner range w/oven	STD	STD	Interior width	88"	88"
6 Cu. ft. 3-way refrigerator	STD	STD	Tires	8.75 x 16.5E	LT215/85R x 16D
3,000 Watt generator w/13,500 BTU roof air	OPT	OPT	Suspension—Front	Coil springs	Coil springs
Deluxe monitor panel	OPT	OPT	Suspension—Rear	Springs	Springs
Barometer/thermometer decorator kit	OPT	OPT	Rear axle ratio	3.73	4.10
32 Amp. converter/charger	STD	STD	Automotive battery (amp.-hr.)	50	50
4 Gallon water heater	STD	STD	Auxiliary battery (amp.-hr.)	90	90
TV Antenna w/jack	OPT	OPT	Fuel capacity (gal.)	40	40
Full tinted windows	STD	STD	Fresh water capacity (gal. w/heater)	24	36
5 year/50,000 mile Traveler's Protection Plan	OPT	OPT	Holding tank capacity (gal.)	20	32
350 Cu. in V8 engine	STD	STD	LP gas (lbs.) (STD/OPT)	28/80	28/80
WinnAir Dual Fuel System	OPT	OPT	Sleeping capacity Standard	4	6
			Optional	6	7
			GVWR (lbs.)	8,600	11,000
			Wheelbase	133"	133"



Warrior RB



Warrior Plus 2 RH

Winnebago's continuing program of product improvement makes specifications, equipment, model availability and prices subject to change without notice. Some items shown may be extra cost options.

For Winnebago sales & service, contact: