

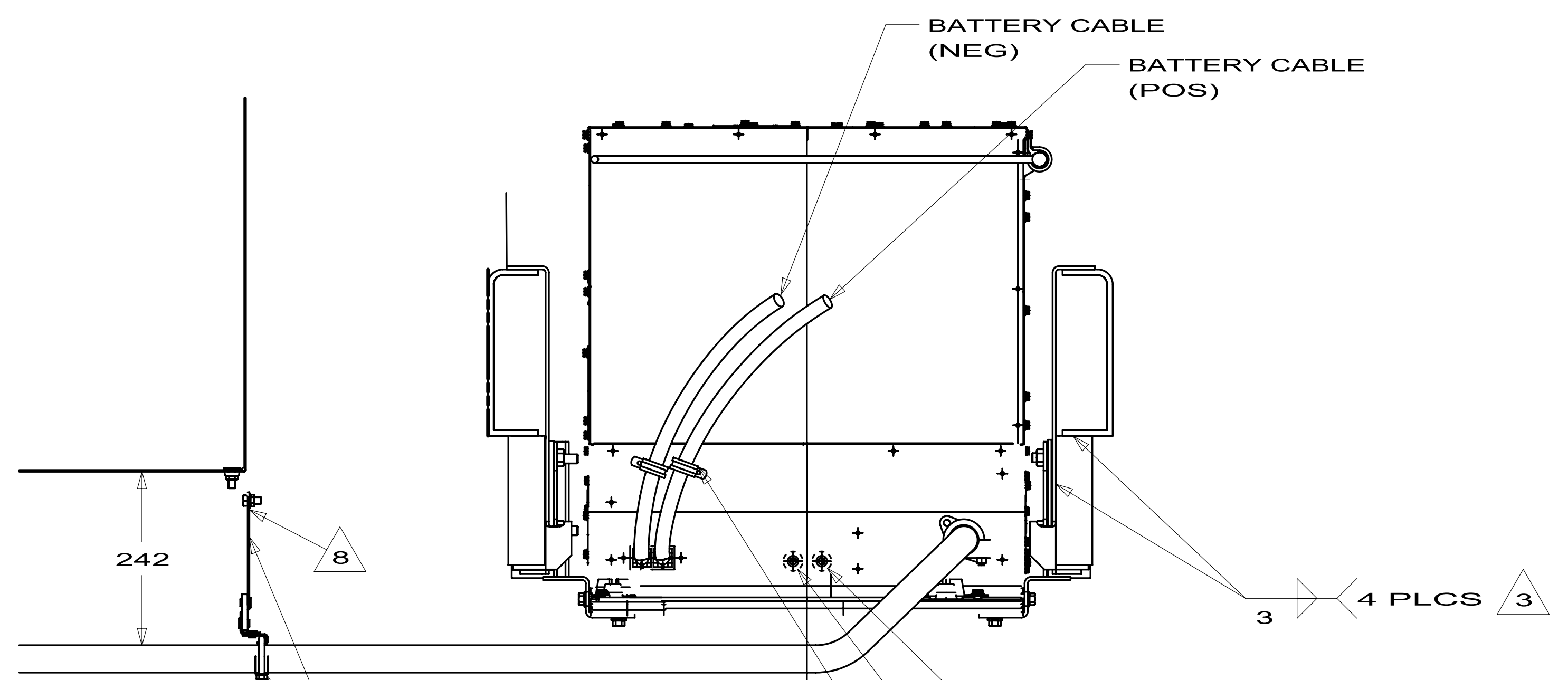
- NOTES:
- 6 USE LOCTITE 062917-02-000 ON ALL THREADS BEFORE INSTALLING BOLTS.
 - 5 EXTENSION IS TO BE FULLY ENGAGED ONTO PIPE.
 - 4 TORQUE CLAMP TO 14 TO 20 FT-LBS.
 - 3 WELD TO BRACKETS AND CHASSIS RAILS AFTER INSTALLATION.
 - 2. SEE WIRING INSTL-BODY FOR ADDITIONAL INFORMATION.
 - 1. SEE GENERATOR INSTALLATION INSTRUCTIONS.

- 9 FASTEN TO FINGER LOOP ON OIL DIPSTICK.
- 8 TORQUE TO 28 TO 42 FT-LBS.
- 7 TORQUE BOLTS TO 57 ± 6 FT-LBS.

		COPYRIGHT 2009 WINNEBAGO INDUSTRIES, INC.	
DFT-ORIG	ORIG. DATE	ALL DIMENSIONS ARE IN MILLIMETERS	
CHKR		10 R-SERIES	
P.E.		MATERIAL:	
M.E.	FIRST USED	UNSPECIFIED TOLERANCES ARE:	
DSNR		WHOLE DIM (X) : 3	
		ONE-PLACE (X.X) : 1.5	
		TWO-PLACE (X.XX) : 0.50	
		ANGLE : 1°	
THIRD ANGLE PROJECTION			
DO NOT SCALE DRAWING			
TITLE: GENERATOR INSTL-DIESEL, 10KW			
SHEET 1 OF 2	PART NO	172592	REV
REF:		1	

EXTENSION-TAILPIPE
5 138246-01-01A
538 (REF)

883

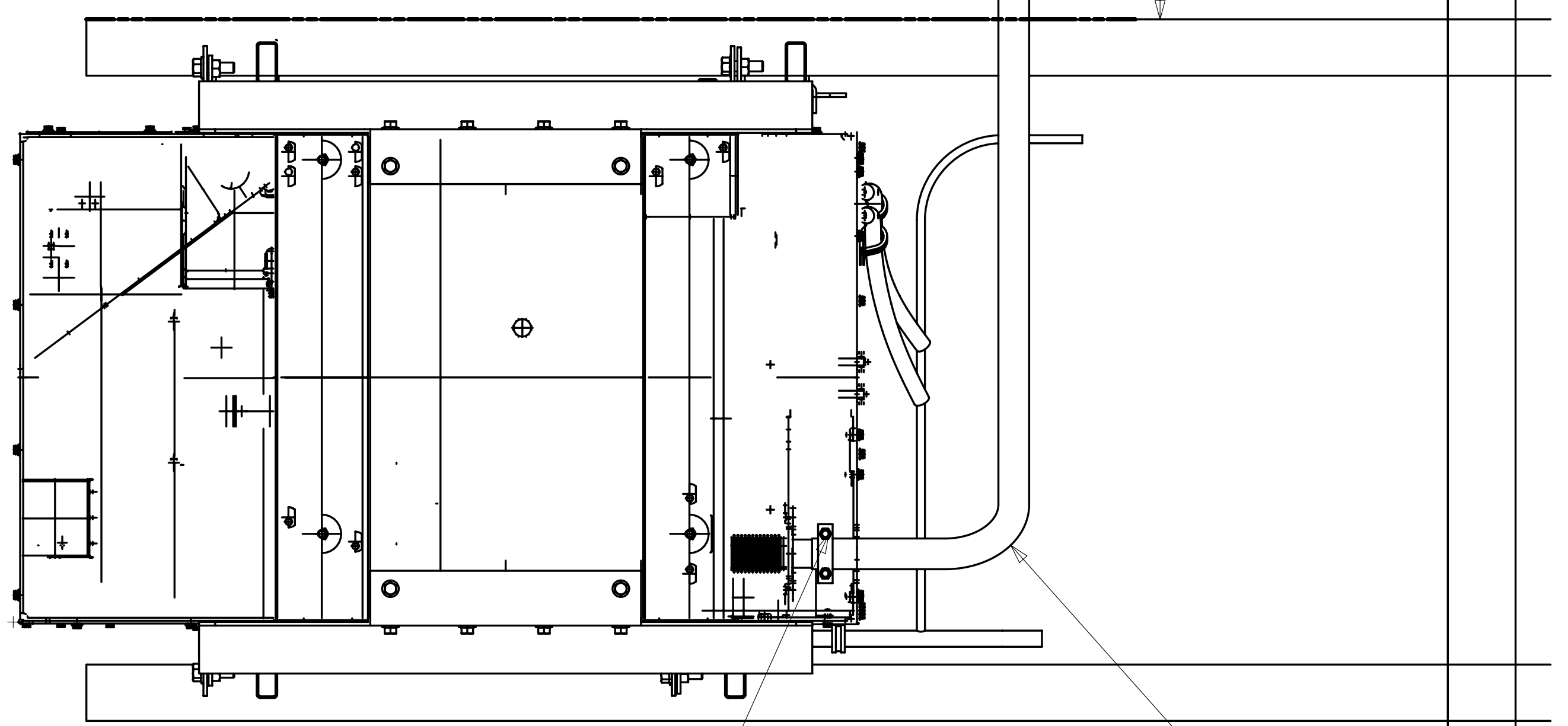


CLAMP
4 007125-03-000

HANGER
007131-01-000
ANGLE
157073-01-02B (UP TO 12-13-09)
157073-02-02B (AFTER 12-14-09)
BOLT
000C26-06-12U
NUT
000D39-06-00B (2)

CLAMP
010497-03-000 (2)
SCREW
000G39-08-12T (2)

VIEW BA



ADAPTOR-EXHAUST
106235-01-000
(BOLTS SUPPLIED)

PIPE-EXHAUST
4 137330-05-000
CLAMP
007125-03-000

VIEW BB

FRONT AXLE
DATUM

FIRST USED		
10 R-SERIES		
DO NOT SCALE DRAWING		
TITLE: GENERATOR INSTL-DIESEL, 10KW		
SHEET 2	PART NO 172592	REV