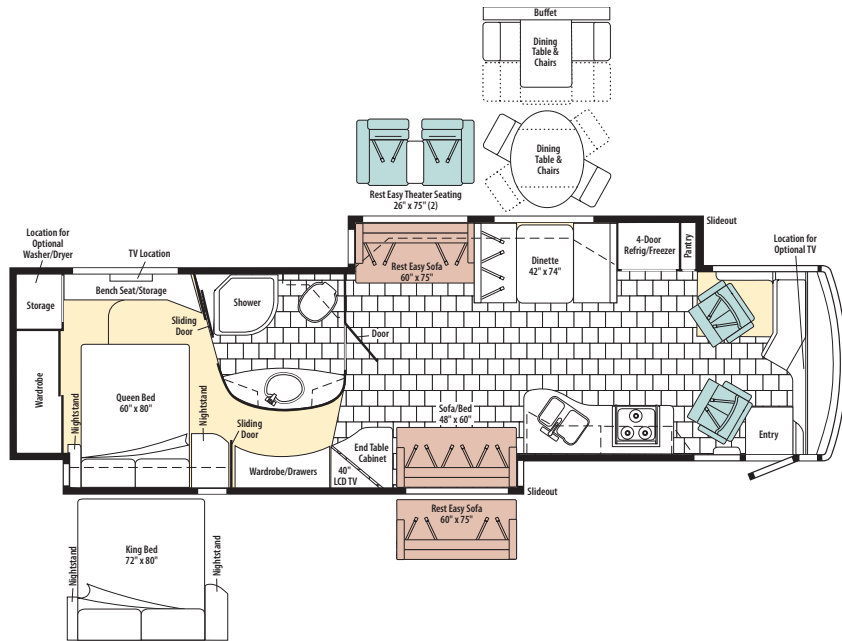
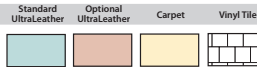


2010 (L) P-SERIES



2010 WINNEBAGO

Journey 40T

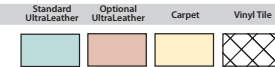


Note: Dimensions shown are for sleeping space only and may vary due to styling differences. Dashed lines denote overhead storage areas.



2010 ITASCA

Meridian 40T



Note: Dimensions shown are for sleeping space only and may vary due to styling differences. Dashed lines denote overhead storage areas.

WKP40T

| | | |
|--------------|-----|---------------------------|
| WROUGHT IRON | AB0 | HONEY CHERRY |
| | AB1 | BELMONT MAPLE |
| | AB2 | FOREST CHERRY |
| ROUNDAABOUT | ADM | SIERRA MAPLE COFFEE GLAZE |
| | AB3 | HONEY CHERRY |
| | AB4 | BELMONT MAPLE |
| COURTYARD | AB5 | FOREST CHERRY |
| | ADN | SIERRA MAPLE COFFEE GLAZE |
| | AB6 | HONEY CHERRY |
| | AB7 | BELMONT MAPLE |
| | AD0 | SIERRA MAPLE COFFEE GLAZE |

IKP40T

| | | |
|-------------|---------------------------|---------------------------|
| CLIFFSIDE | AC0 | HONEY CHERRY |
| | AC1 | BELMONT MAPLE |
| | AC2 | FOREST CHERRY |
| CROSSROADS | ADP | SIERRA MAPLE COFFEE GLAZE |
| | AC3 | HONEY CHERRY |
| | AC4 | BELMONT MAPLE |
| CINDERBLOCK | AC5 | FOREST CHERRY |
| | ADQ | SIERRA MAPLE COFFEE GLAZE |
| | AC6 | HONEY CHERRY |
| | AC7 | BELMONT MAPLE |
| | AC8 | FOREST CHERRY |
| ADR | SIERRA MAPLE COFFEE GLAZE | |

158603-10-012- MANUAL/OWNER - SUPPLEMENT - P SERIES - 2010
 159842-01-01A - CASE - VINYL - F/MANUALS - W/SLEEVES - BLACK
 161500-10-020- MANUAL/OWNER - JOURNEY - P SERIES - 2010
 161500-10-021 - MANUAL/OWNER - MERIDIAN - P SERIES - 2010
 170746-01-000 - TOP LEVEL DRAWING - R, 2010