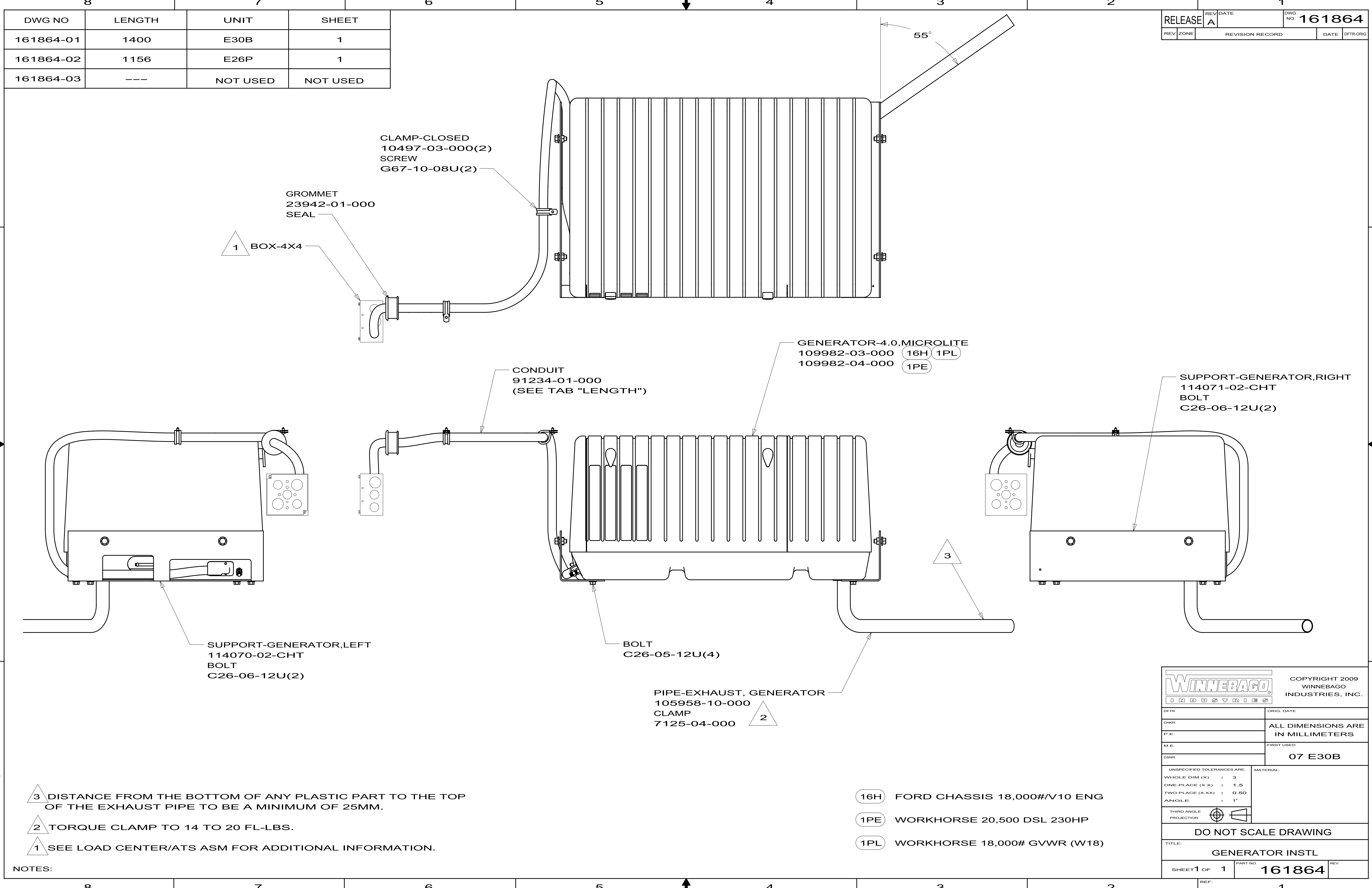


DWG NO	LENGTH	UNIT	SHEET
161864-01	1400	E30B	1
161864-02	1156	E26P	1
161864-03	---	NOT USED	NOT USED

RELEASE	REV DATE	DWG NO	161864
REV ZONE	REVISION RECORD	DATE	DTR-ORIG



- NOTES:
- 3 DISTANCE FROM THE BOTTOM OF ANY PLASTIC PART TO THE TOP OF THE EXHAUST PIPE TO BE A MINIMUM OF 25MM.
 - 2 TORQUE CLAMP TO 14 TO 20 FL-LBS.
 - 1 SEE LOAD CENTER/ATS ASM FOR ADDITIONAL INFORMATION.

- (16H) FORD CHASSIS 18,000#/V10 ENG
- (1PE) WORKHORSE 20,500 DSL 230HP
- (1PL) WORKHORSE 18,000# GVWR (W18)

WINNEBAGO INDUSTRIES

COPYRIGHT 2009 WINNEBAGO INDUSTRIES, INC.

DTR	ORIG. DATE
CHKR	ALL DIMENSIONS ARE IN MILLIMETERS
P.E.	
M.E.	FIRST USED
DSNR	07 E30B

UNSPECIFIED TOLERANCES ARE:

WHOLE DIM (X)	: 3
ONE-PLACE (X.X)	: 1.5
TWO-PLACE (X.XX)	: 0.50
ANGLE	: 1°

THIRD ANGLE PROJECTION

DO NOT SCALE DRAWING

TITLE: **GENERATOR INSTL**

SHEET 1 OF 1 PART NO **161864** REV