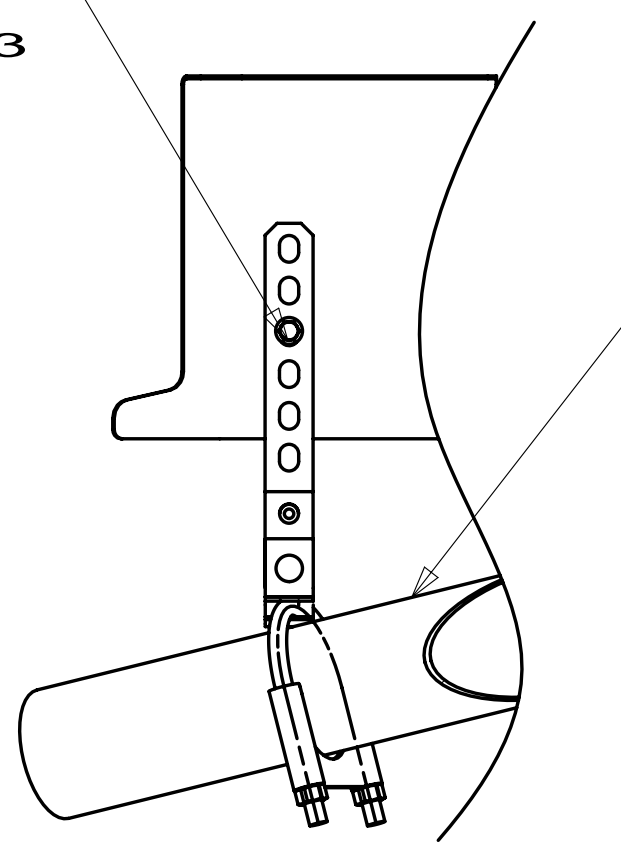


BOLT
C26-04-18B
NUT
D39-04-00B
(DRILL 7.13
DIA HOLE)



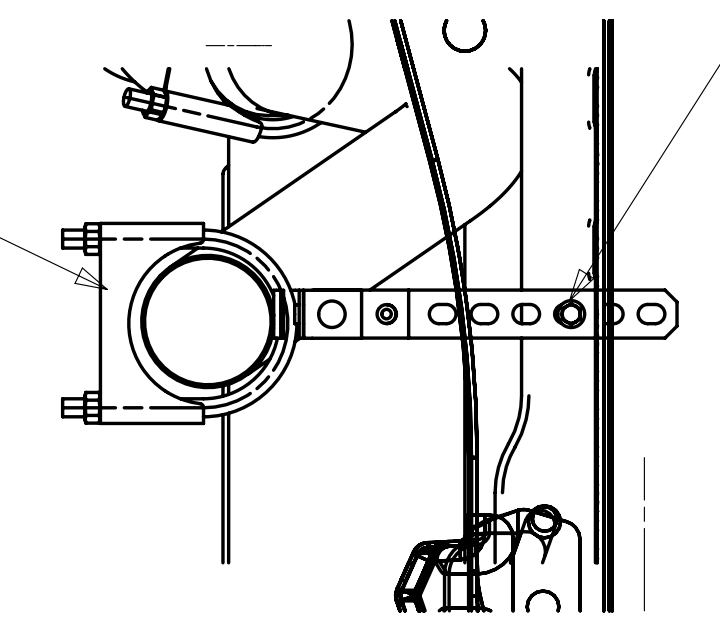
SECTION AB-AB

PIPE-EXHAUST
160364-03-000
CLAMP
94918-01-000
HANGER
007131-01-000

CLAMP
94918-01-000

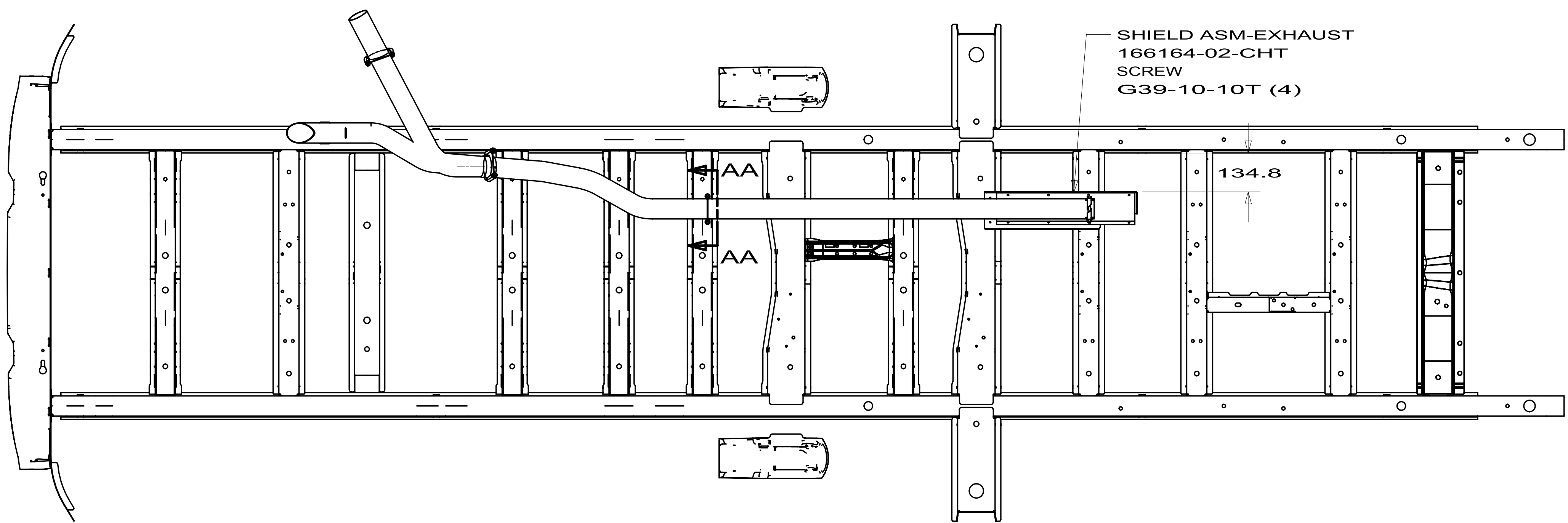
CUT SPRINTER PIPE
UP 210 MM FROM BEND

HANGER
7131-01-000
CLAMP
94918-01-000



SECTION AA-AA

BOLT
C26-04-18B
RIVNUT
39715-05-000
(DRILL CURRENT HOLE
LARGER TO 9.92 DIA)



SHIELD ASM-EXHAUST
166164-02-CHT
SCREW
G39-10-10T (4)

134.8

- NOTES:
- 3. ANGLE DOWN TO BE BELOW RUNNING BOARDS 25 mm.
 - 2. DATUM IS LOCATED AT THE BACK OF THE CAB.
 - 1. TORQUE CLAMP TO 35 ± 3 Nm.

INDICATES CRITICAL SAFETY
PROCEDURE TO BE FOLLOWED

		COPYRIGHT 2009 WINNEBAGO INDUSTRIES, INC.	
DTR	ORIG. DATE	ALL DIMENSIONS ARE IN MILLIMETERS	
CHKR		MATERIAL:	
P.E.		09 BV1170	
M.E.	FIRST USED	UNSPECIFIED TOLERANCES ARE:	
DSNR		WHOLE DIM (X) : 3	
		ONE-PLACE (X.X) : 1.5	
		TWO-PLACE (X.XX) : 0.50	
		ANGLE : 1°	
THIRD ANGLE PROJECTION			
DO NOT SCALE DRAWING			
TITLE: EXHAUST SYSTEM INSTL			
SHEET 1 OF 1	PART NO	166042	REV
REF:	1		