

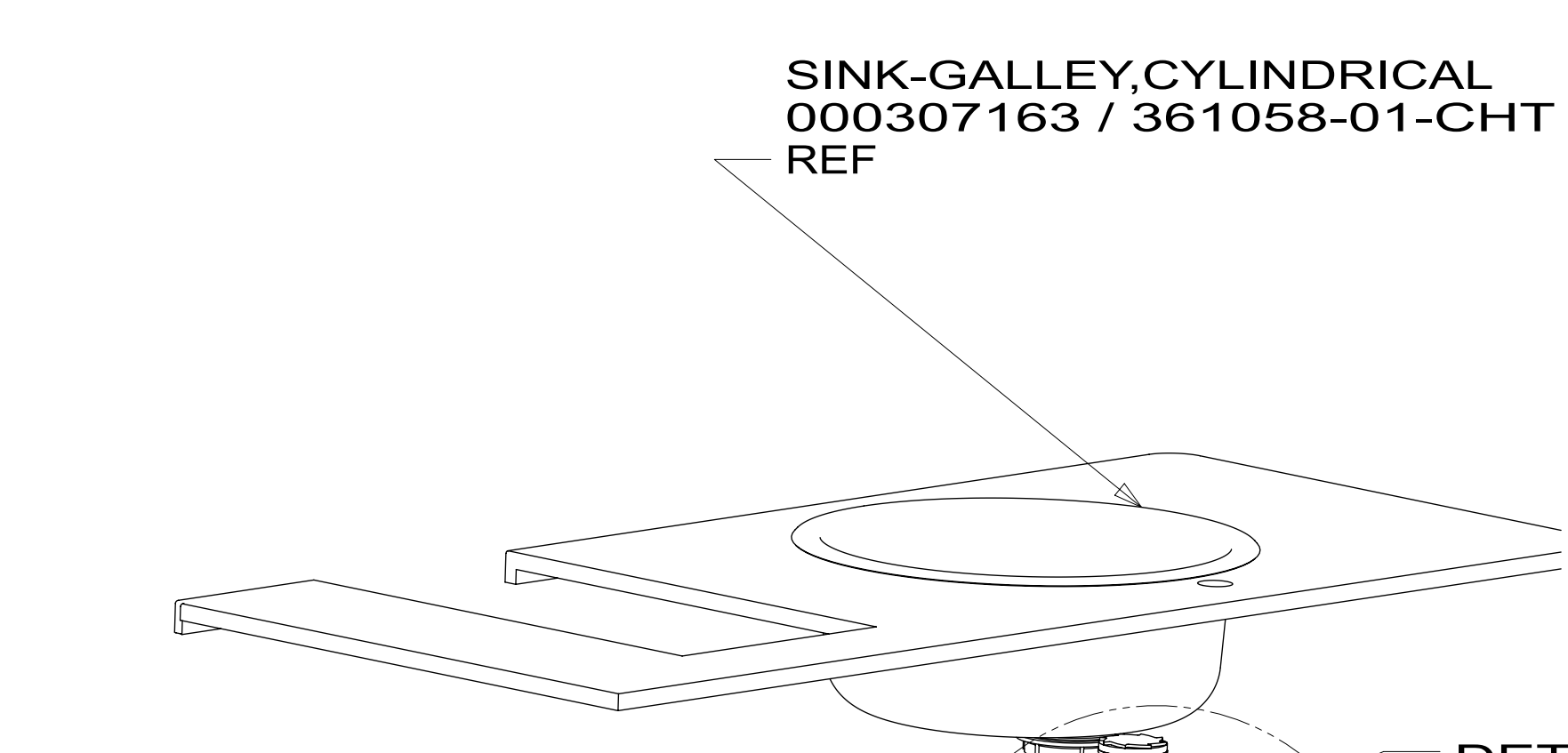
- NOTES:
1. SLOPE OF HORIZONTAL PIPING TO BE MINIMUM OF 3 PER 305 mm.
  2. SLOPE OF TRAP ARM MUST BE 6 PER 305 mm.
  3. ALL PIPE AND FITTINGS TO BE ASSEMBLED WITH SOLVENT 004020-01-000 (USA), 004020-02-000 (CAN).
  4. USE SMOOTH PLUMBERS PUTTY 167459-01-000 TO SEAL STRAINER (0.2 PER STRAINER).
  5. VENT PIPE MUST PROJECT 51 MIN AND 64 MAX ABOVE ROOF FOR PROPER FIT AND FUNCTION.
  6. SECURE VENT PIPE TO FLOOR WITH CLAMP 000156237 / 326663-02-000, SCREW 000G67-10-12U, BRACKET 136878-01-CHT.
  7. SECURE DRAINAGE PIPES TO CABINET USING WIRE TIE 108046-02-000, AND SCREW 000G67-10-12U AT INTERVALS OF NOT MORE THAN 4 FEET APART.
  8. SEE DRAWING 061607 FOR INSTALLATION OF GROMMETS.
  9. SEE WIRING INSTL-BODY FOR ELECTRICAL CONNECTION.
  10. PREP THE SURFACE PER MANUFACTURERS INSTRUCTIONS BEFORE APPLYING THE HEATING PAD.
  11. ATTACH SEAL TO BRACE WHERE IT CONTACTS HEATER PAD.

X-X	FOR SEALS & ADHESIVES CALLOUTS SEE DWG NO. 000297348 / 359866-01-000	X-X	FOR DRAINAGE CALLOUTS SEE DWG NO. 000211962 / 303370-01-000
-----	--	-----	---

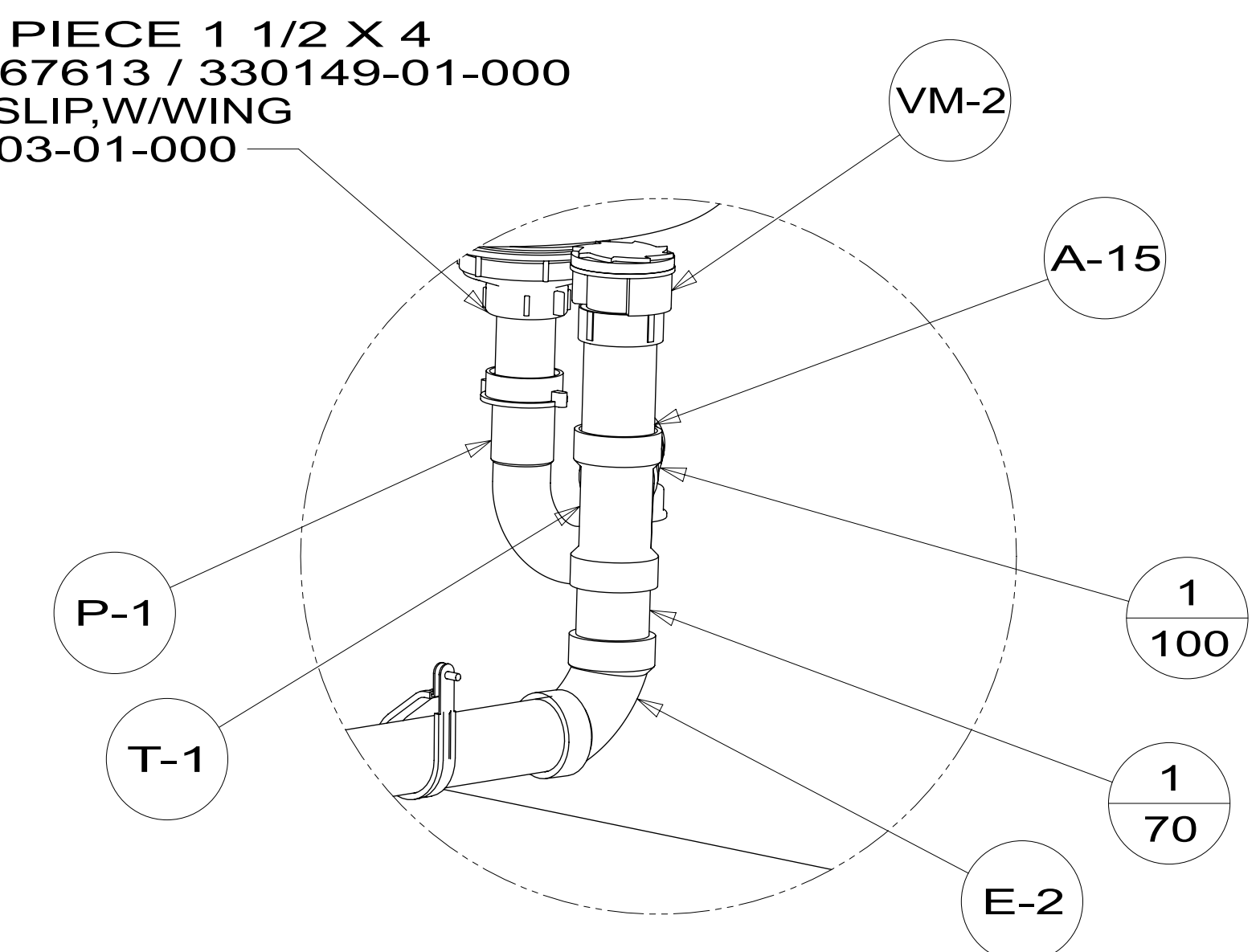
CC	INDICATES A CRITICAL CHARACTERISTIC. ENSURE PROPER PROCEDURES ARE FOLLOWED.
SC	INDICATES A SIGNIFICANT CHARACTERISTIC. ENSURE PROPER PROCEDURES ARE FOLLOWED.
KC	INDICATES A KEY CHARACTERISTIC. ENSURE PROPER PROCEDURES ARE FOLLOWED.

**WINNEBAGO**<sup>®</sup>  
COPYRIGHT 2024 WINNEBAGO INDUSTRIES, INC.

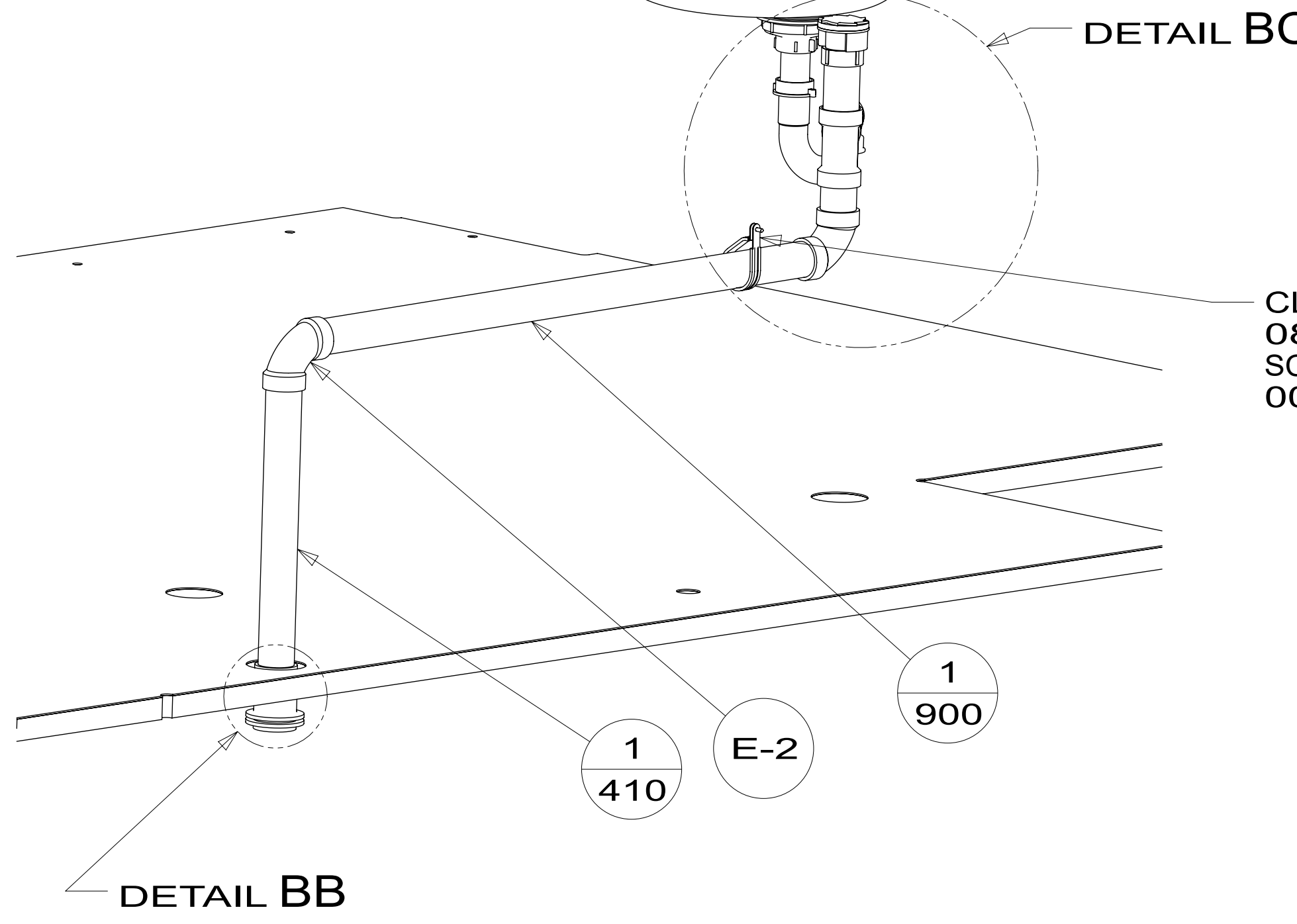
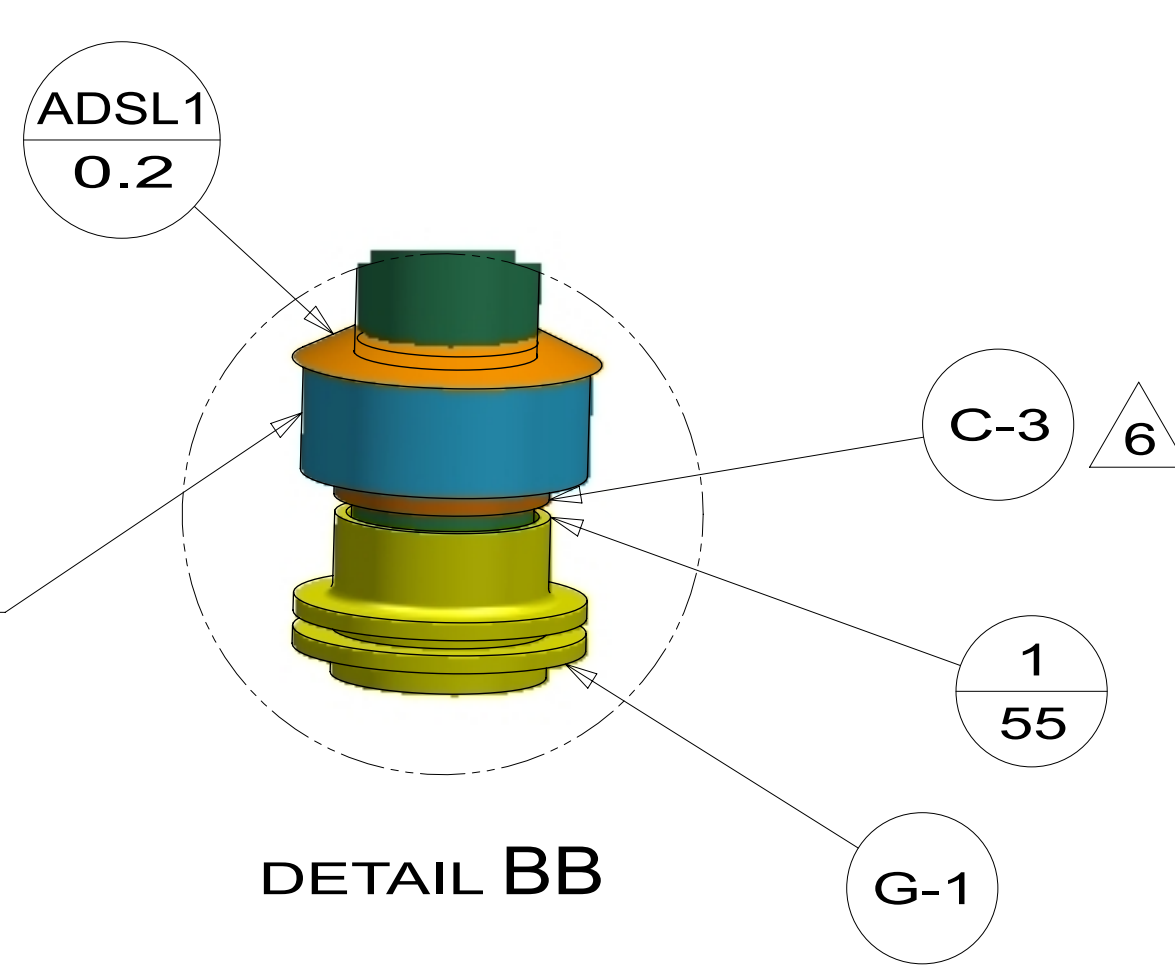
DSNR:	ALL DIMENSIONS ARE IN MILLIMETERS	⊕
DIFTR:		
UNSPECIFIED TOLERANCES:		MATERIAL:
WHOLE DIM (X)	3	
ONE-PLACE (X.X)	1.5	
TWO-PLACE (X.XX)	0.50	
ANGLE	1°	
REFER TO ES0018 FOR FASTENER TIGHTENING GUIDELINES	WEIGHT: (LBS)	FIRST USED: (REF)
		26 324GG
<b>DRAINAGE SYSTEM INSTL</b>		
SHEET: 1 OF 4	ITEM/PART NO: 000310322 / 36208601000	REV:



TAIL PIECE 1 1/2 X 4  
000167613 / 330149-01-000  
NUT-SLIP,W/WING  
130403-01-000

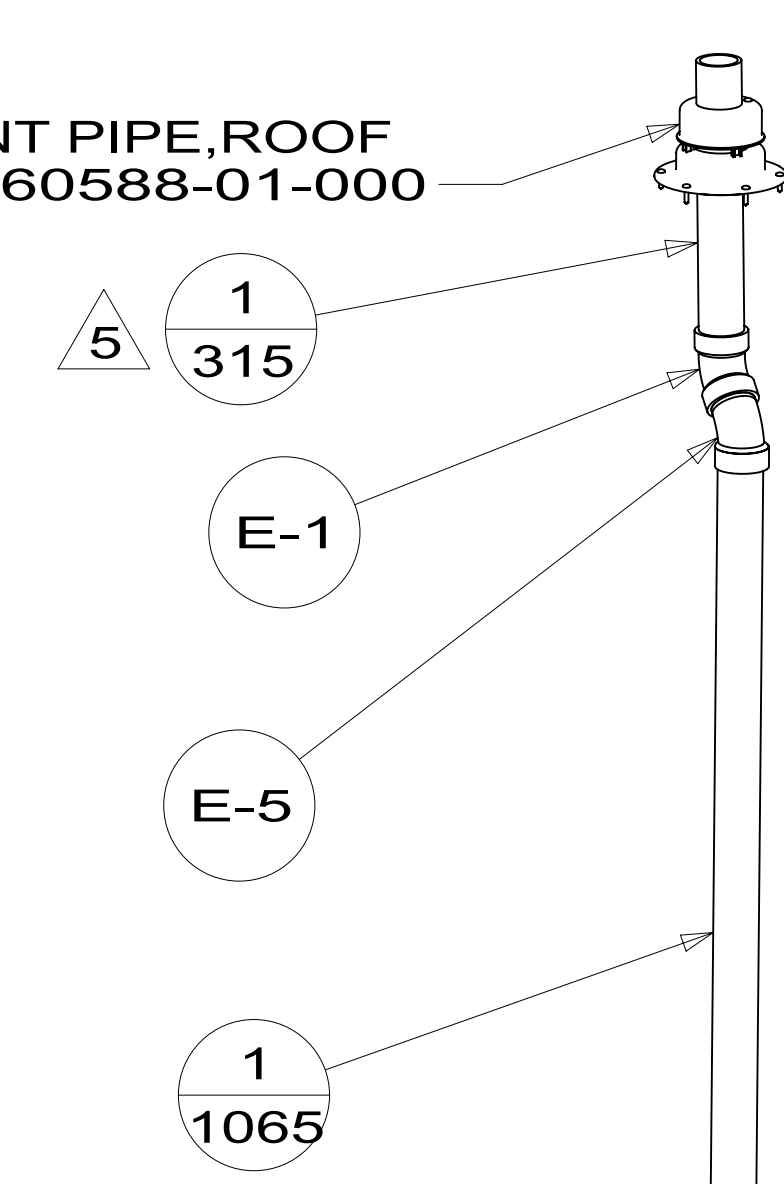


EXPANDING FOAM  
110744-03-000 (5)  
(6.9 Oz)  
(SECTION CB-CB)

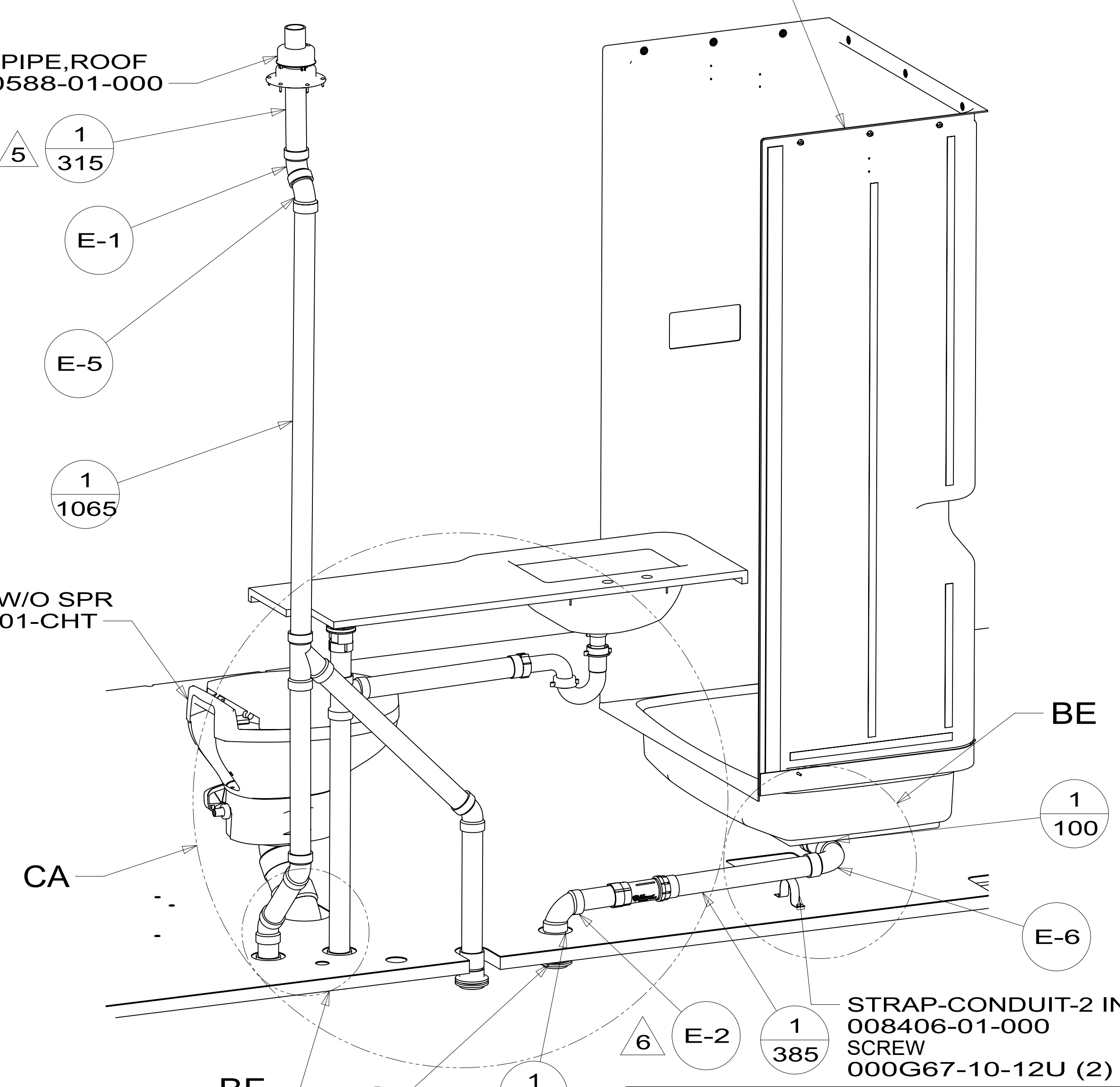


DETAIL BC

CAP INSTL-VENT PIPE,ROOF  
000303582 / 360588-01-000

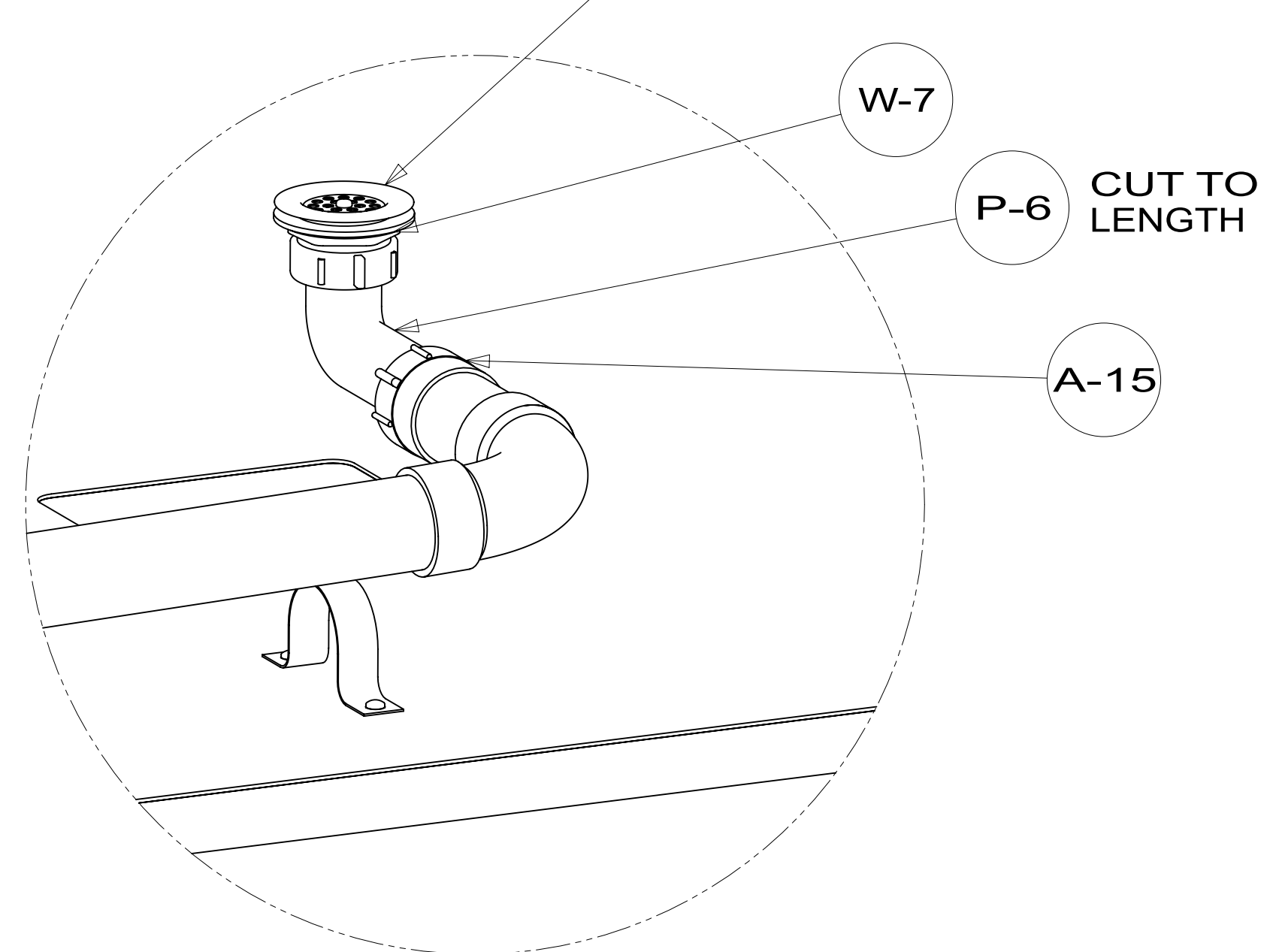


SHOWER INSTL  
000310585 / 362231-01-000

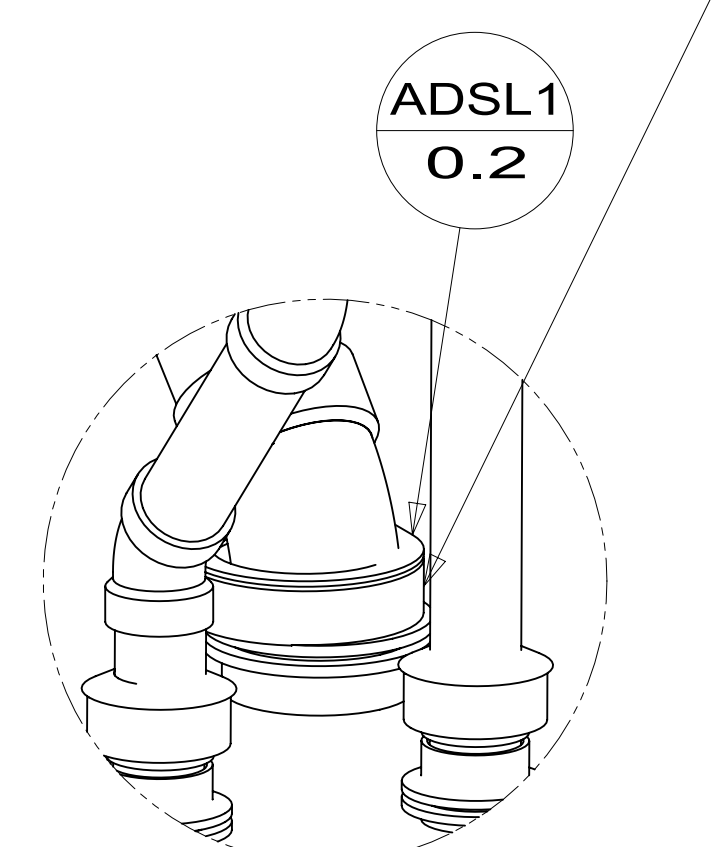


VIEW BA

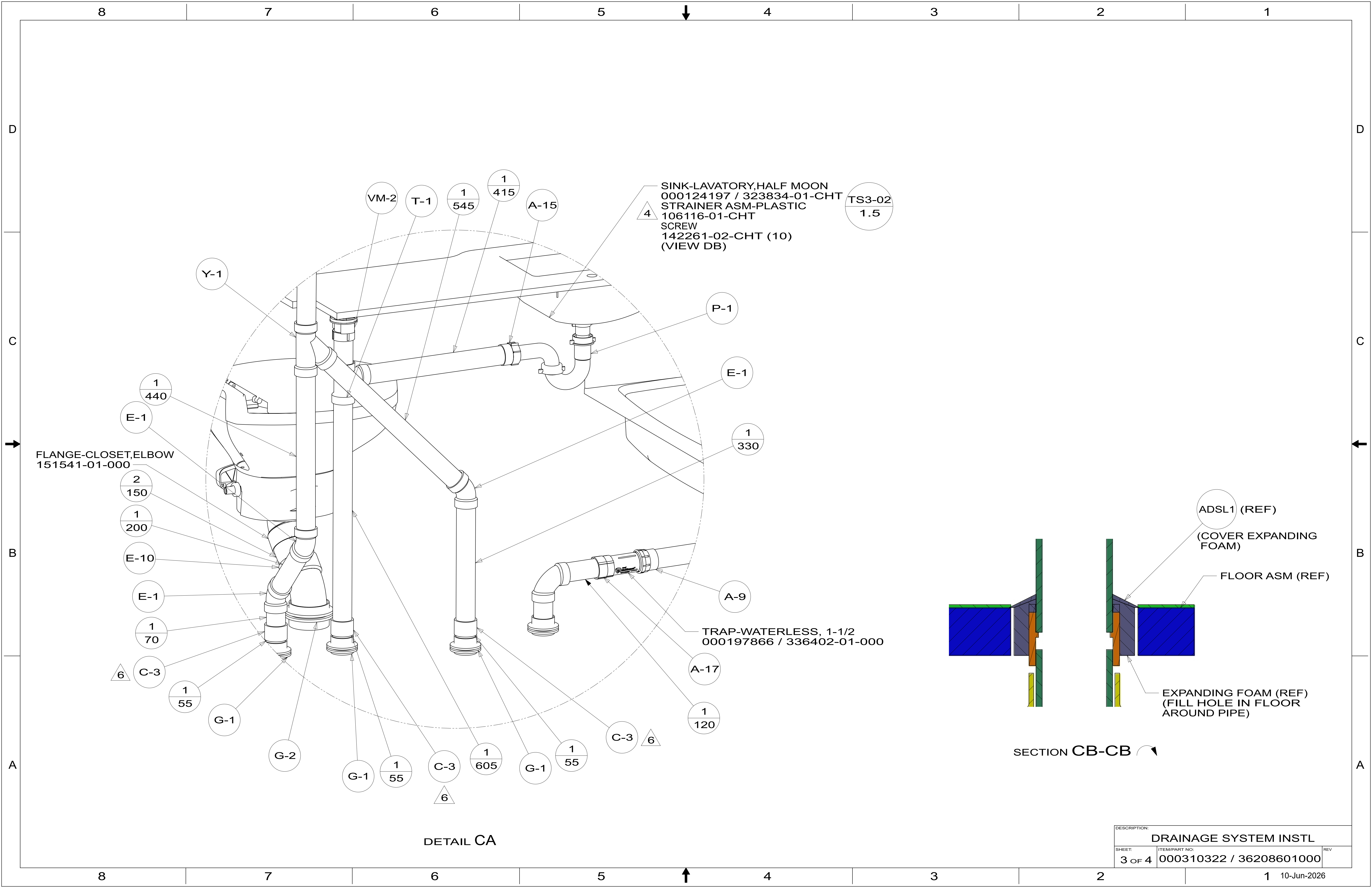
STRAINER W/RUBBER WASHER  
066440-01-000  
4



EXPANDING FOAM  
110744-03-000  
(2.3 Oz)  
(SECTION CC-CC)



DESCRIPTION: <b>DRAINAGE SYSTEM INSTL</b>		
SHEET: 2 OF 4	ITEM/PART NO: 000310322 / 36208601000	REV



SINK-LAVATORY, HALF MOON  
 000124197 / 323834-01-CHT  
 STRAINER ASM-PLASTIC  
 106116-01-CHT  
 SCREW  
 142261-02-CHT (10)  
 (VIEW DB)

TS3-02  
 1.5

FLANGE-CLOSET, ELBOW  
 151541-01-000

TRAP-WATERLESS, 1-1/2  
 000197866 / 336402-01-000

ADSL1 (REF)  
 (COVER EXPANDING  
 FOAM)

FLOOR ASM (REF)

EXPANDING FOAM (REF)  
 (FILL HOLE IN FLOOR  
 AROUND PIPE)

SECTION CB-CB

DETAIL CA

DESCRIPTION:		
DRAINAGE SYSTEM INSTL		
SHEET:	ITEM/PART NO.:	REV
3 OF 4	000310322 / 36208601000	

