

- 11. TRIM TO FIT
- 10. PREP THE SURFACE PER MANUFACTURERS INSTRUCTIONS BEFORE APPLYING HEAT PAD.
- 9. SEE WIRING INSTL-BODY FOR ELECTRICAL CONNECTIONS.
- 8. USE SMOOTH PLUMBERS PUTTY 167459-01-000 TO SEAL STRAINER (0.2 PER STRAINER).
- 7. REMOVE SWIVEL NUT ON TRAP-WATERLESS 165406-01 AND CONNECT TO A-10.
- 6. VENT PIPE MUST PROJECT 6 TO 15MM FROM SIDEWALL FOR PROPER FIT AND FUNCTION.
- 5. SEAL AROUND SHOWER WITH SILICONE.
- 4. SECURE DRAINAGE PIPES TO CABINET USING WIRE TIE 108046-02-000, AND SCREW 000G67-10-12U AT INTERVALS OF NOT MORE THAN 4 FEET APART.
- 3. ALL PIPE AND FITTINGS TO BE ASSEMBLED WITH SOLVENT 004020-01-000 (USA), 004020-02-000 (CAN)
- 2. SLOPE OF TRAP ARM MUST BE 6 PER 305 mm.
- 1. SLOPE OF HORIZONTAL PIPING TO BE MINIMUM OF 3 PER 305 mm.

NOTES:

X-X
FOR
DRAINAGE
CALLOUTS
SEE DWG NO.
000211962 /
303370-01-000

CC	INDICATES A CRITICAL CHARACTERISTIC. ENSURE PROPER PROCEDURES ARE FOLLOWED.																												
SC	INDICATES A SIGNIFICANT CHARACTERISTIC. ENSURE PROPER PROCEDURES ARE FOLLOWED.																												
KC	INDICATES A KEY CHARACTERISTIC. ENSURE PROPER PROCEDURES ARE FOLLOWED.																												
WINNEBAGO [®] <small>COPYRIGHT 2024 WINNEBAGO INDUSTRIES, INC.</small>																													
<table border="1" style="width: 100%; border-collapse: collapse;"> <tr> <td colspan="2">DSNR:</td> <td colspan="2">ALL DIMENSIONS ARE IN MILLIMETERS</td> </tr> <tr> <td colspan="2">DIFTR:</td> <td colspan="2" style="text-align: right;"> </td> </tr> <tr> <td>UNSPECIFIED TOLERANCES:</td> <td></td> <td colspan="2">MATERIAL:</td> </tr> <tr> <td>WHOLE DIM (X)</td> <td style="text-align: center;">3</td> <td colspan="2"></td> </tr> <tr> <td>ONE-PLACE (X.X)</td> <td style="text-align: center;">1.5</td> <td colspan="2"></td> </tr> <tr> <td>TWO-PLACE (X.XX)</td> <td style="text-align: center;">0.50</td> <td colspan="2"></td> </tr> <tr> <td>ANGLE</td> <td style="text-align: center;">1°</td> <td colspan="2"></td> </tr> </table>		DSNR:		ALL DIMENSIONS ARE IN MILLIMETERS		DIFTR:				UNSPECIFIED TOLERANCES:		MATERIAL:		WHOLE DIM (X)	3			ONE-PLACE (X.X)	1.5			TWO-PLACE (X.XX)	0.50			ANGLE	1°		
DSNR:		ALL DIMENSIONS ARE IN MILLIMETERS																											
DIFTR:																													
UNSPECIFIED TOLERANCES:		MATERIAL:																											
WHOLE DIM (X)	3																												
ONE-PLACE (X.X)	1.5																												
TWO-PLACE (X.XX)	0.50																												
ANGLE	1°																												
REFER TO ES0018 FOR FASTENER TIGHTENING GUIDELINES		WEIGHT: (LBS)	FIRST USED: (REF)																										
			26 T59P																										
DRAINAGE SYSTEM INSTL																													
SHEET:	ITEM/PART NO.:	REV																											
1 OF 3	000309140 / 36211401000																												
		REF:	1 03-Mar-2026																										

SHOWER INSTL
000188678 / 335600-01-XXX

DOOR-STORAGE
179220-01-CHT
FOAM-SEAL,DOOR
179377-01-CHT
COMPARTMENT-STORAGE
179218-01-CHT
SCREW
000G12-08-12U (10)

COUPLER NUT, WATERLESS TRAP
000197851 / 336400-01-000
TRAP-WATERLESS, 1-1/2
000197866 / 336402-01-000

STRAINER
066440-01-000

SEAL-FOAM
169992-03-CHT
(670 MM)

ELBOW-90DEG 1 1/2 - FERNCO
000258816 / 350996-01-000

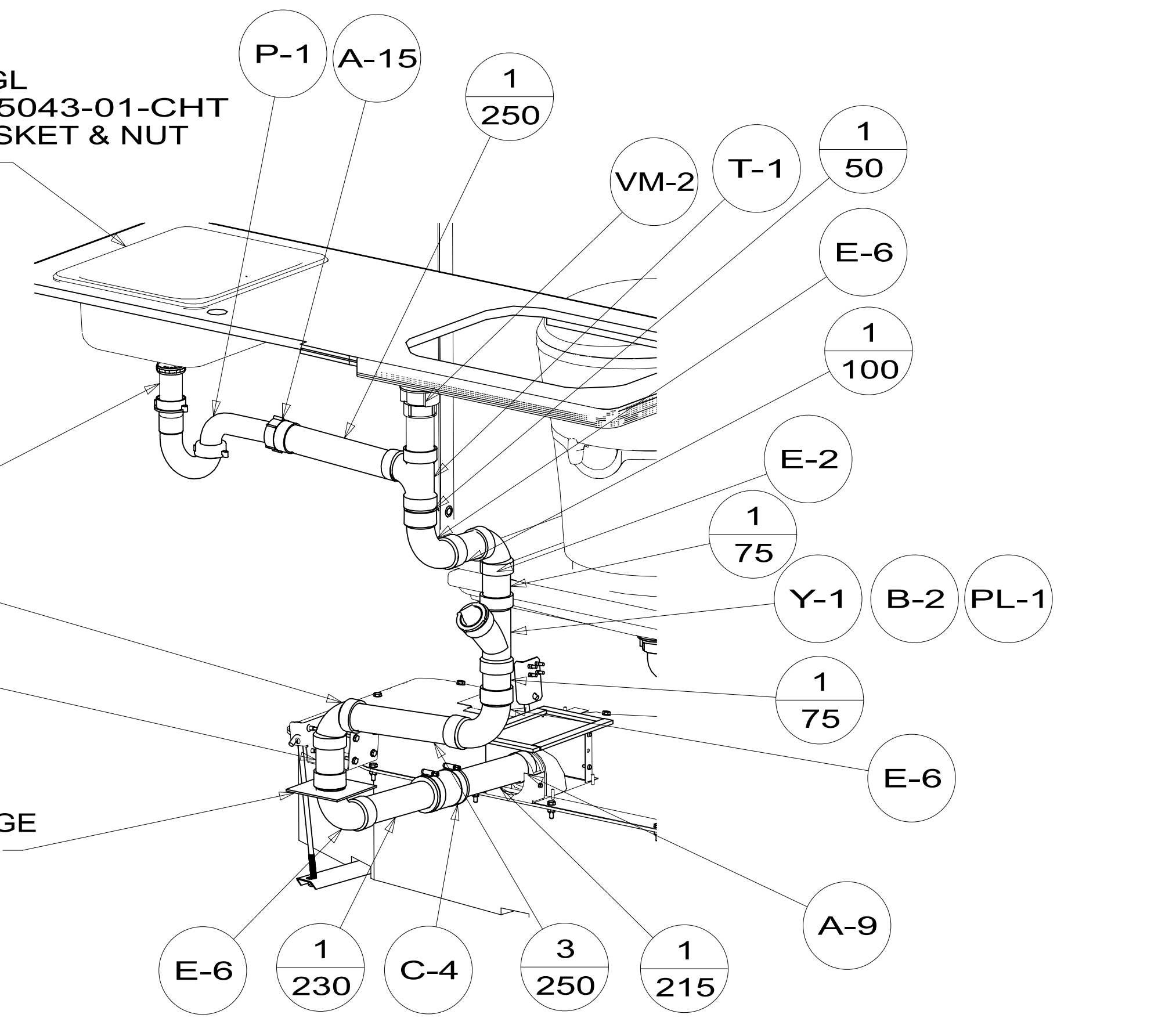
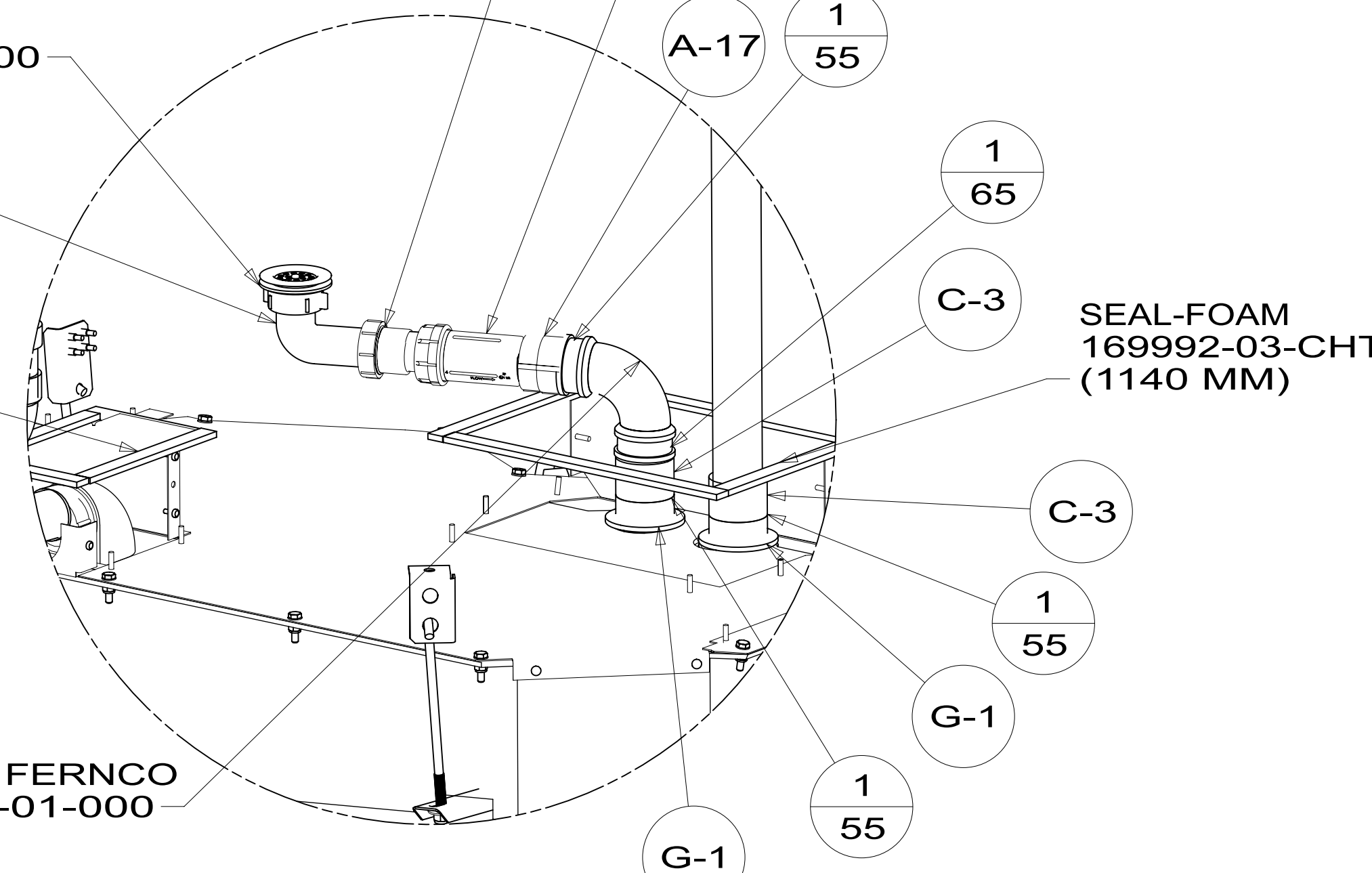
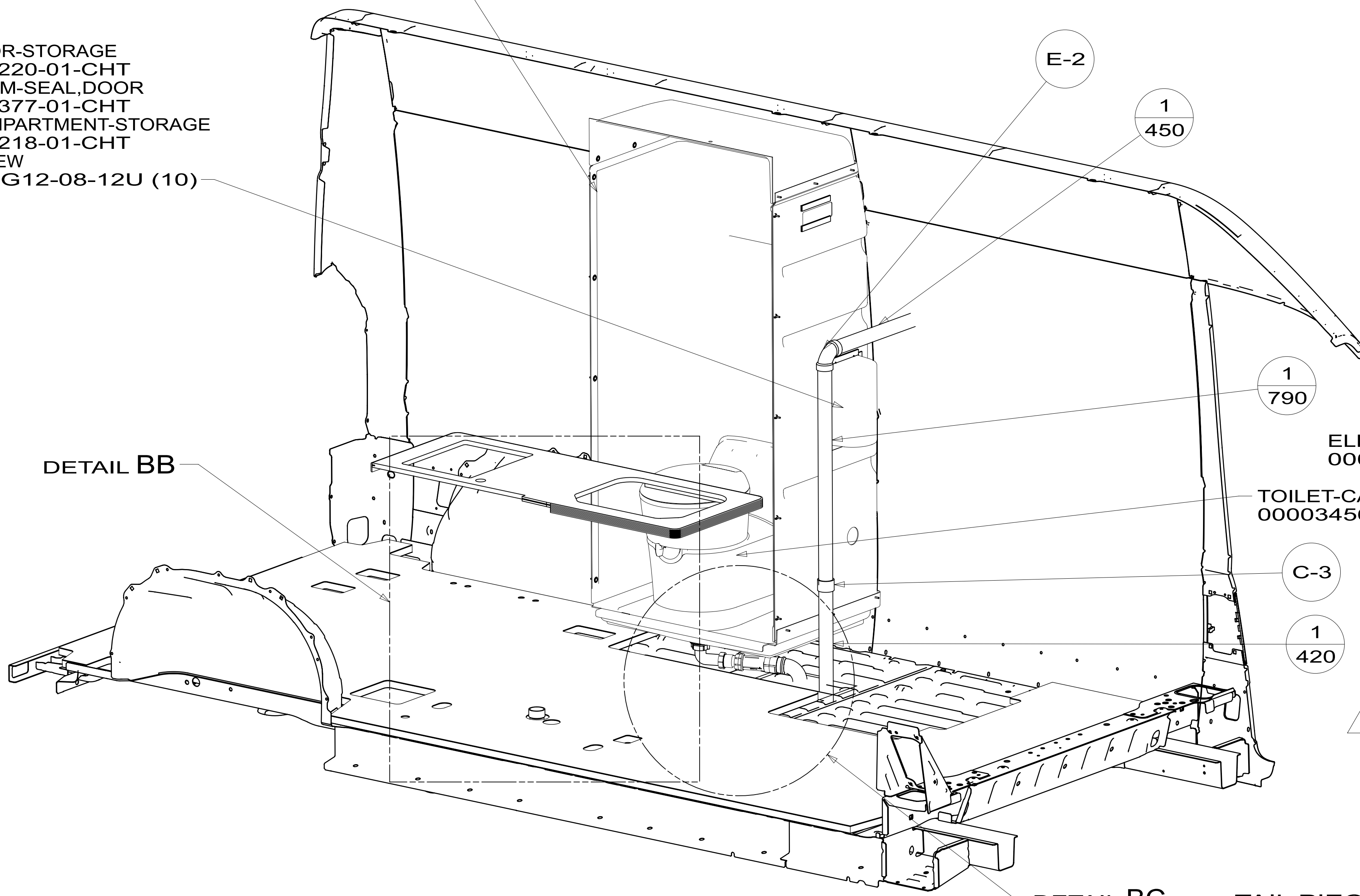
TOILET-CASSETTE
000034566 / 320321-01-CHT

SINK-GALLEY,SGL
000321973 / 365043-01-CHT
STRAINER W/BASKET & NUT
163569-01-000

TAIL PIECE 1 1/2 X 4
000167613 / 330149-01-000
(TRIM TAIL BY 20 MM)

GASKET-DRAINAGE
167219-03-CHT

SEAL-FOAM
169992-03-CHT
(1140 MM)

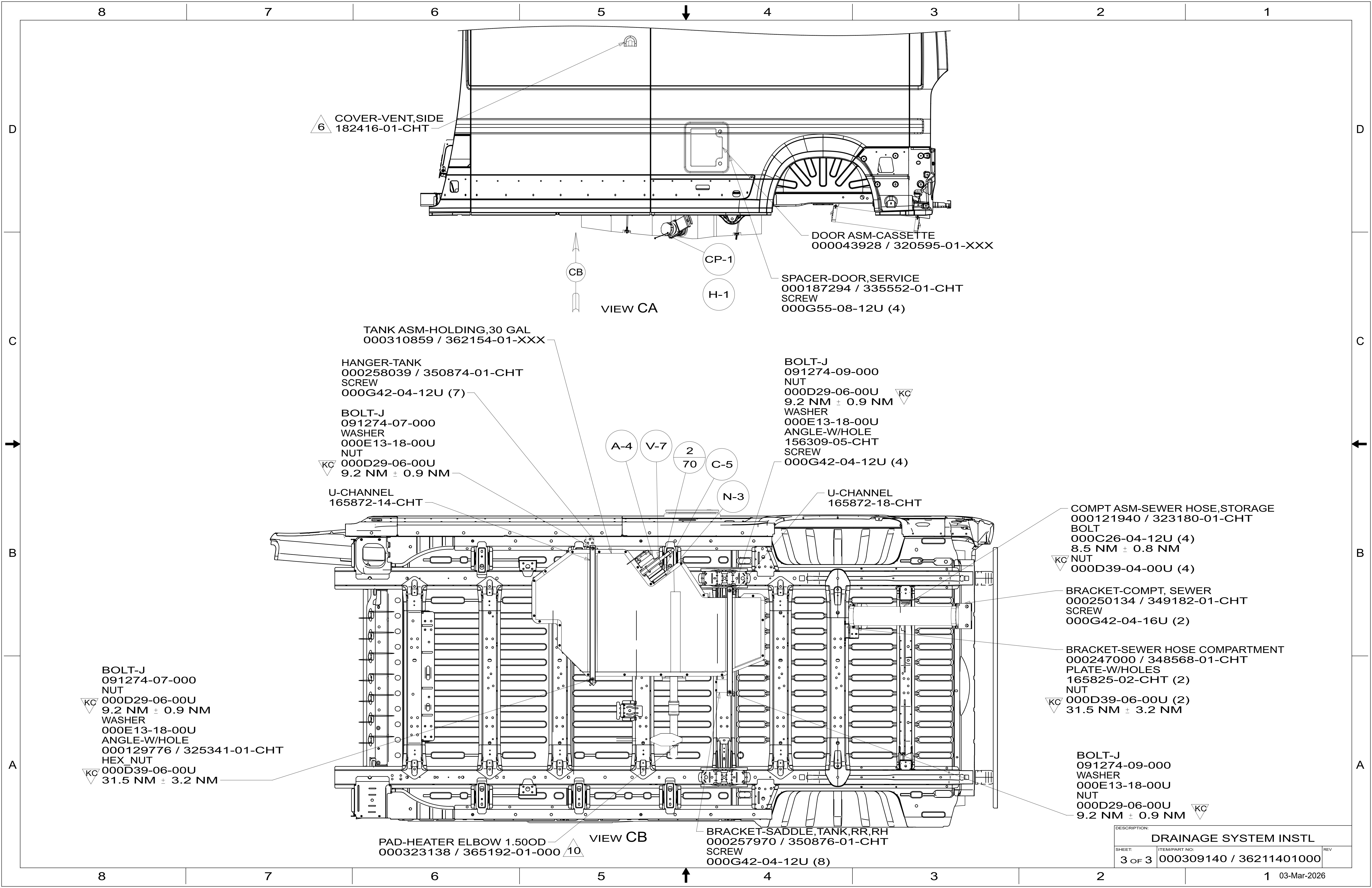


VIEW BA

DETAIL BC

DETAIL BB

DESCRIPTION: DRAINAGE SYSTEM INSTL		
SHEET: 2 OF 3	ITEM/PART NO: 000309140 / 36211401000	REV



6 COVER-VENT, SIDE
182416-01-CHT

DOOR ASM-CASSETTE
000043928 / 320595-01-XXX

SPACER-DOOR, SERVICE
000187294 / 335552-01-CHT
SCREW
000G55-08-12U (4)

VIEW CA

TANK ASM-HOLDING, 30 GAL
000310859 / 362154-01-XXX

HANGER-TANK
000258039 / 350874-01-CHT
SCREW
000G42-04-12U (7)

BOLT-J
091274-07-000
WASHER
000E13-18-00U
NUT
000D29-06-00U
9.2 NM ± 0.9 NM

BOLT-J
091274-09-000
NUT
000D29-06-00U
9.2 NM ± 0.9 NM
WASHER
000E13-18-00U
ANGLE-W/HOLE
156309-05-CHT
SCREW
000G42-04-12U (4)

U-CHANNEL
165872-14-CHT

U-CHANNEL
165872-18-CHT

COMPT ASM-SEWER HOSE, STORAGE
000121940 / 323180-01-CHT
BOLT
000C26-04-12U (4)
8.5 NM ± 0.8 NM
NUT
000D39-04-00U (4)

BRACKET-COMPT, SEWER
000250134 / 349182-01-CHT
SCREW
000G42-04-16U (2)

BRACKET-SEWER HOSE COMPARTMENT
000247000 / 348568-01-CHT
PLATE-W/HOLES
165825-02-CHT (2)
NUT
000D39-06-00U (2)
31.5 NM ± 3.2 NM

BOLT-J
091274-07-000
NUT
000D29-06-00U
9.2 NM ± 0.9 NM
WASHER
000E13-18-00U
ANGLE-W/HOLE
000129776 / 325341-01-CHT
HEX_NUT
000D39-06-00U
31.5 NM ± 3.2 NM

BOLT-J
091274-09-000
WASHER
000E13-18-00U
NUT
000D29-06-00U
9.2 NM ± 0.9 NM

PAD-HEATER ELBOW 1.500D
000323138 / 365192-01-000 10

VIEW CB

BRACKET-SADDLE, TANK, RR, RH
000257970 / 350876-01-CHT
SCREW
000G42-04-12U (8)

DESCRIPTION: DRAINAGE SYSTEM INSTL		
SHEET: 3 OF 3	ITEM/PART NO: 000309140 / 36211401000	REV