

8 7 6 5 4 3 2 1

D

D

C

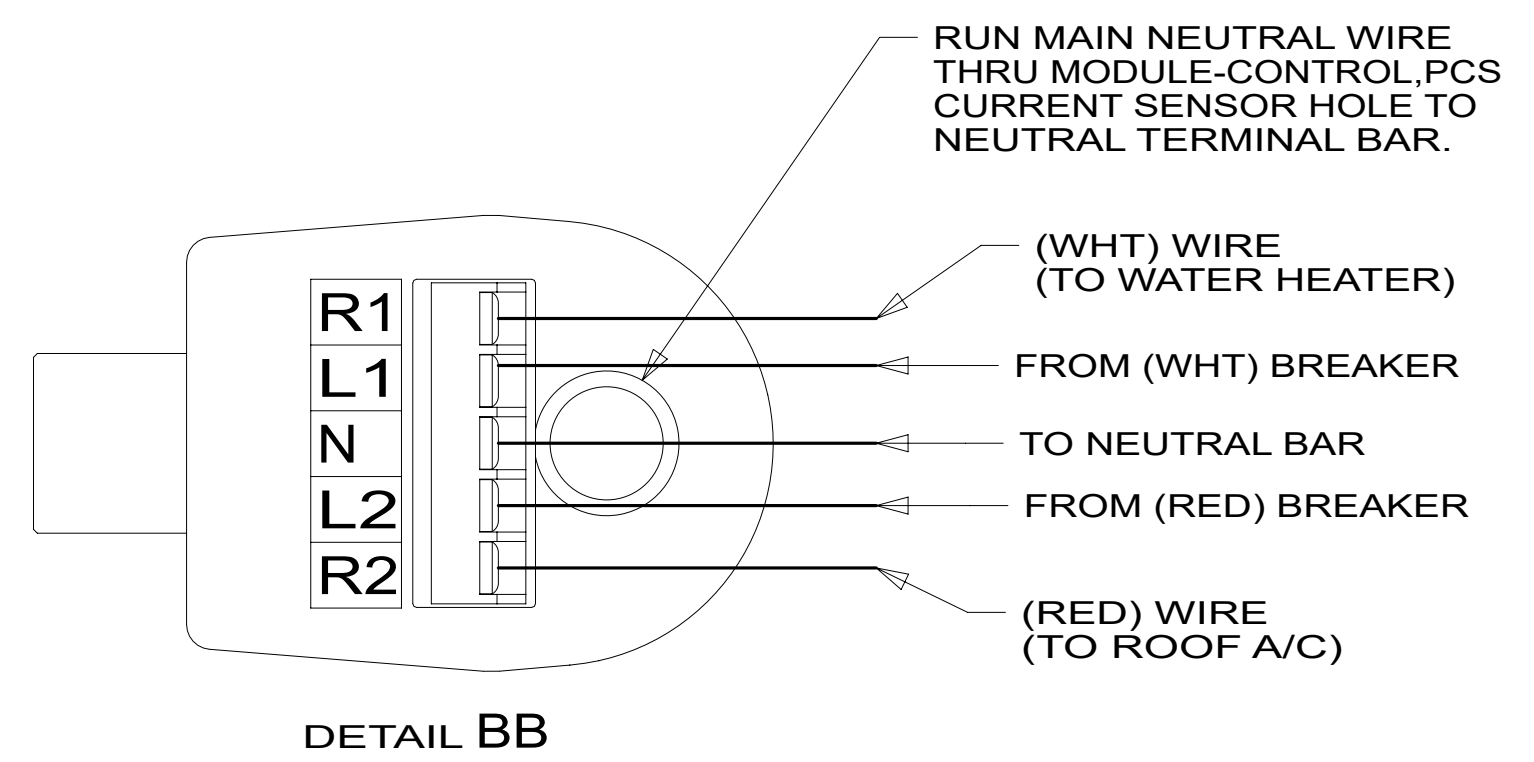
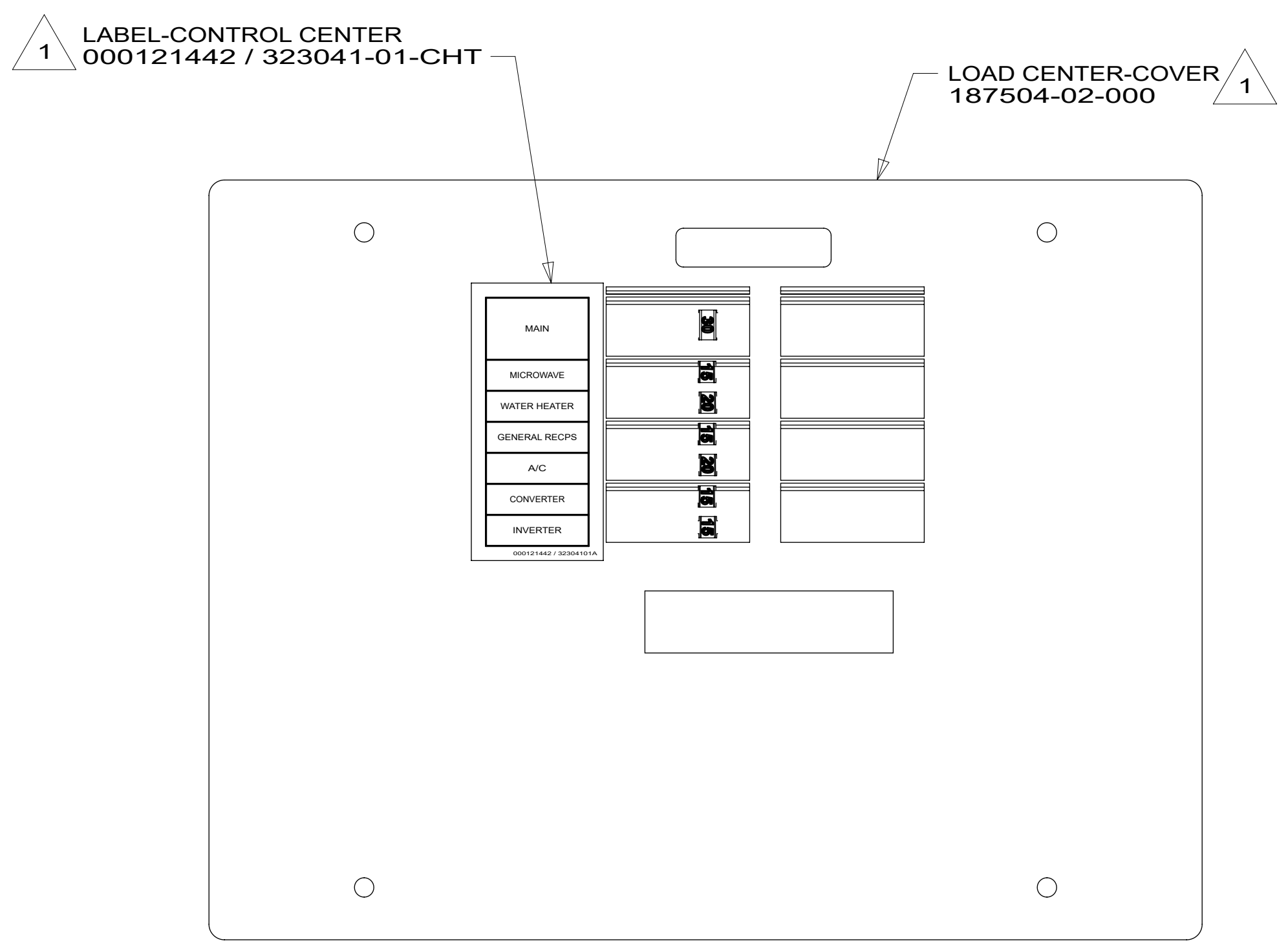
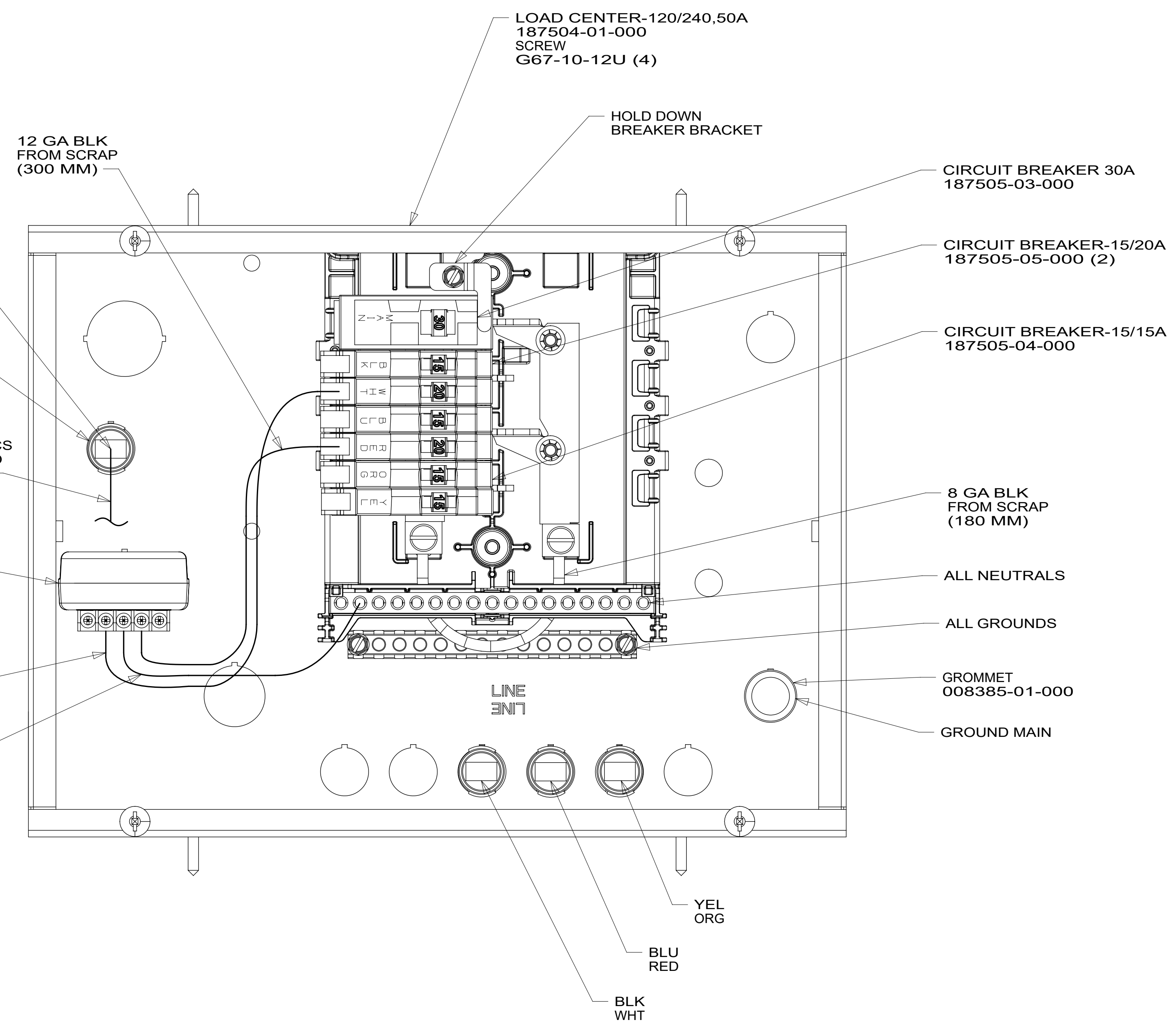
C

B

B

A

A



- 7. SEE WIRING INSTL-BODY,110V FOR ADDITIONAL INFORMATION.
  - 6. ALL 110V STRANDED WIRE WITHOUT TERMINALS TO BE STRIPPED 10 MM AND SOLDER DIPPED.
  - 5. REMOVE 400 MM FROM OUTER JACKET ON ALL WIRES ENTERING LOAD CENTER AND TRIM INDIVIDUAL CONDUCTORS AS REQUIRED TO MAKE INTERNAL CONNECTIONS.
  - 4. ALL WIRES TO BE CLAMPED WITHIN 200 MM OF ATS.
  - 3. GROUND WIRES ARE NOT SHOWN FOR CLARITY.
  - 2. ALL GROUNDS TO BE COVERED WITH TUBING 8041-02-000.
- 1 INSTALLED BY ASSEMBLY LINE.

NOTES:

FOR ELECTRICAL TORQUE SPECIFICATIONS SEE DWG NO. 128783-01-000

FOR ELECTRICAL CALLOUTS SEE DWG 000228177 344479-01-000

- 265 CODES/STANDARDS-CSA/CMVSS
- 1B1 CODES/STANDARDS USA
- 1B1 265

<b>WINNEBAGO</b> COPYRIGHT 2024 WINNEBAGO INDUSTRIES, INC.	
DSNR:	ALL DIMENSIONS ARE IN MILLIMETERS
DFT:	
UNSPECIFIED TOLERANCES:	MATERIAL:
WHOLE DIM (X) : 3	
ONE-PLACE (X.X) : 1.5	
TWO-PLACE (X.XX) : 0.50	
ANGLE : 1°	
REFER TO ES0018 FOR FASTENER TIGHTENING GUIDELINES	WEIGHT: (LBS) FIRST USED: <b>25 259G</b>
<b>LOAD CENTER ASM</b>	
SHEET: 1 OF 1	ITEM/PART NO: 000296272 / 35950201000

8 7 6 5 4 3 2 1 REF: 1 02-Feb-2026