

FRONT OF AXEL  
VEHICLE

DATUM  
EDGE OF FLOOR

BB

BB

BA

CA

541

502

- 9. ALL CRIMP FITTINGS TO 3/4" PEX TUBING REQUIRE 3/4" CLAMP 000156247 / 326668-01-000.
- 8. ALL CRIMP FITTINGS TO 1/2" PEX TUBING REQUIRE 1/2" CLAMP 000156249 / 326670-01-000.
- 7. ALL CRIMP FITTINGS TO 5/8" FLEX TUBING REQUIRE 5/8" CLAMP 000156248 / 326669-01-000.
- 6. LABEL HOT AND COLD SUPPLY TUBES AND TAPE FITTING TO TUBE BEFORE CABINET SET TO PREVENT MOVEMENT.
- 5. ADD PIPE WRAP (LADDER SCRAP 110157-02-000) INSULATION.
- 4. ADD TEFLON TAPE 010405-01-000.
- 3. ALL TUBING TO BE SECURED AT 1200 INTERVALS MAXIMUM WITH CLAMP 010495-01-000 AND SCREW 000G67-10-12U OR EQUIVALENT.
- 2. TUBING TO BE INSTALLED WITH SUFFICIENT SLOPE TO PROVIDE DRAINAGE TO NEAREST VALVE.
- 1. PLASTIC FITTINGS TO BE SEALED WITH SEALANT 084456-01-000.

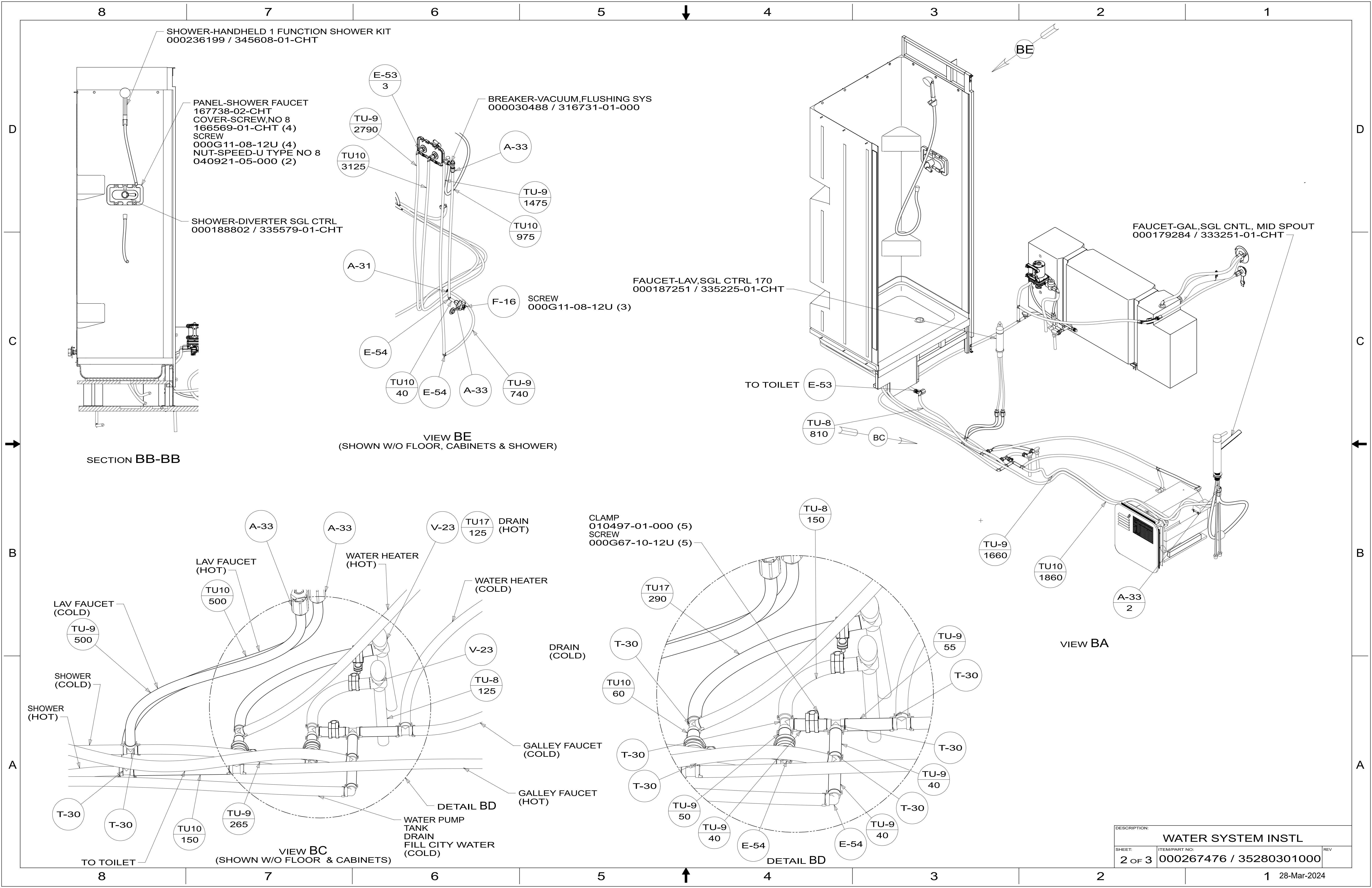
NOTES:

- CC** INDICATES A CRITICAL CHARACTERISTIC. ENSURE PROPER PROCEDURES ARE FOLLOWED.
- SC** INDICATES A SIGNIFICANT CHARACTERISTIC. ENSURE PROPER PROCEDURES ARE FOLLOWED.
- KC** INDICATES A KEY CHARACTERISTIC. ENSURE PROPER PROCEDURES ARE FOLLOWED.

X-X  
FOR WATER CALLOUTS SEE DWG NO. 000209446 / 303369-01-000

**WINNEBAGO**  
COPYRIGHT 2024 WINNEBAGO INDUSTRIES, INC.

DSNR:	ALL DIMENSIONS ARE IN MILLIMETERS	
DFTR:	MATERIAL:	
UNSPECIFIED TOLERANCES:	WHOLE DIM (X) : 3	
	ONE-PLACE (X.X) : 1.5	
	TWO-PLACE (X.XX) : 0.50	
	ANGLE : 1°	
REFER TO ES0018 FOR FASTENER TIGHTENING GUIDELINES	WEIGHT: (LBS)	FIRST USED: (REF)
		24 C24P
DESCRIPTION: <b>WATER SYSTEM INSTL</b>		
SHEET: 1 OF 3	ITEM/PART NO: 000267476 / 35280301000	REV:



SHOWER-HANDHELD 1 FUNCTION SHOWER KIT  
000236199 / 345608-01-CHT

PANEL-SHOWER FAUCET  
167738-02-CHT  
COVER-SCREW,NO 8  
166569-01-CHT (4)  
SCREW  
000G11-08-12U (4)  
NUT-SPEED-U TYPE NO 8  
040921-05-000 (2)

SHOWER-DIVERTER SGL CTRL  
000188802 / 335579-01-CHT

BREAKER-VACUUM,FLUSHING SYS  
000030488 / 316731-01-000

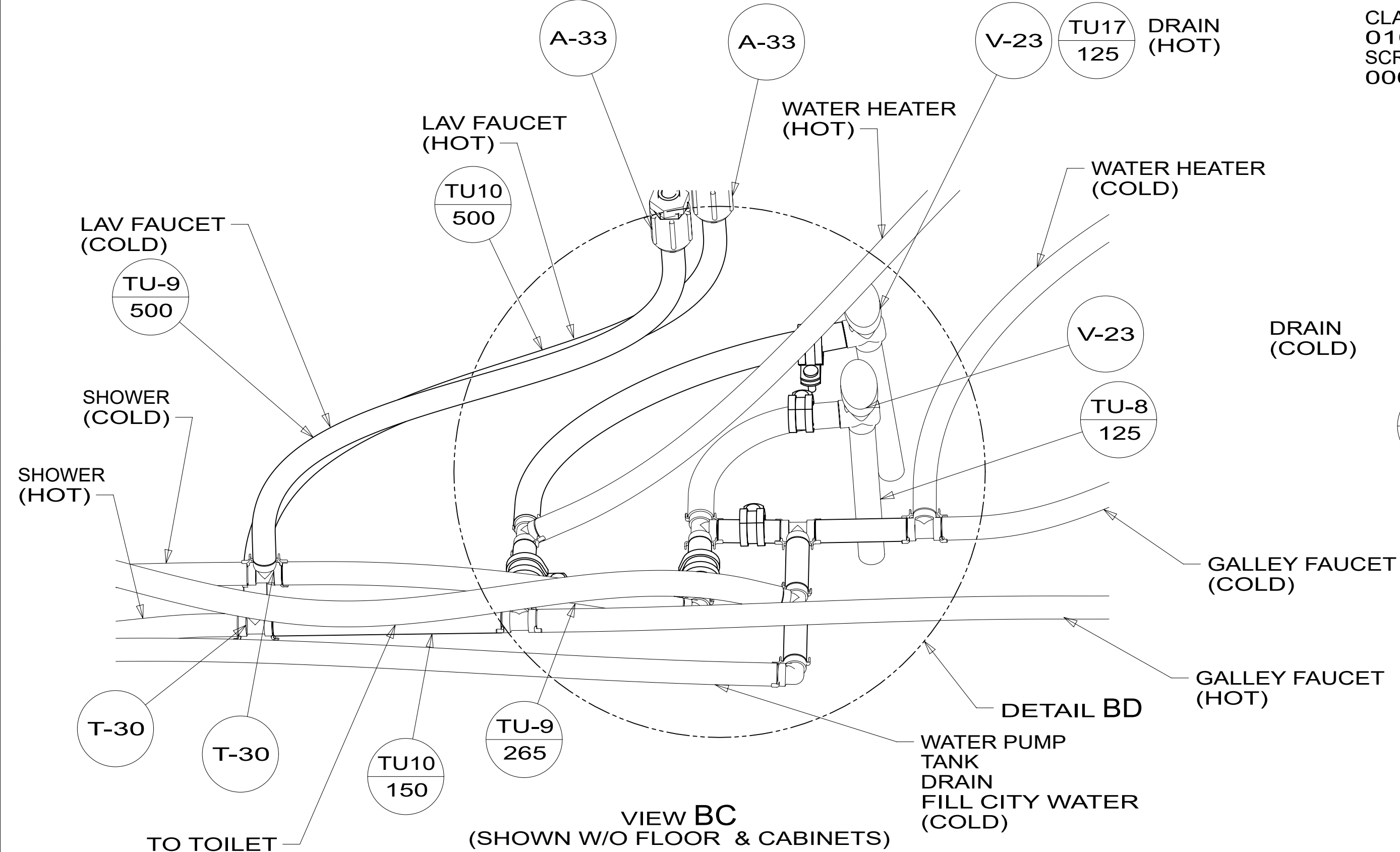
FAUCET-LAV,SGL CTRL 170  
000187251 / 335225-01-CHT

FAUCET-GAL,SGL CNTL, MID SPOUT  
000179284 / 333251-01-CHT

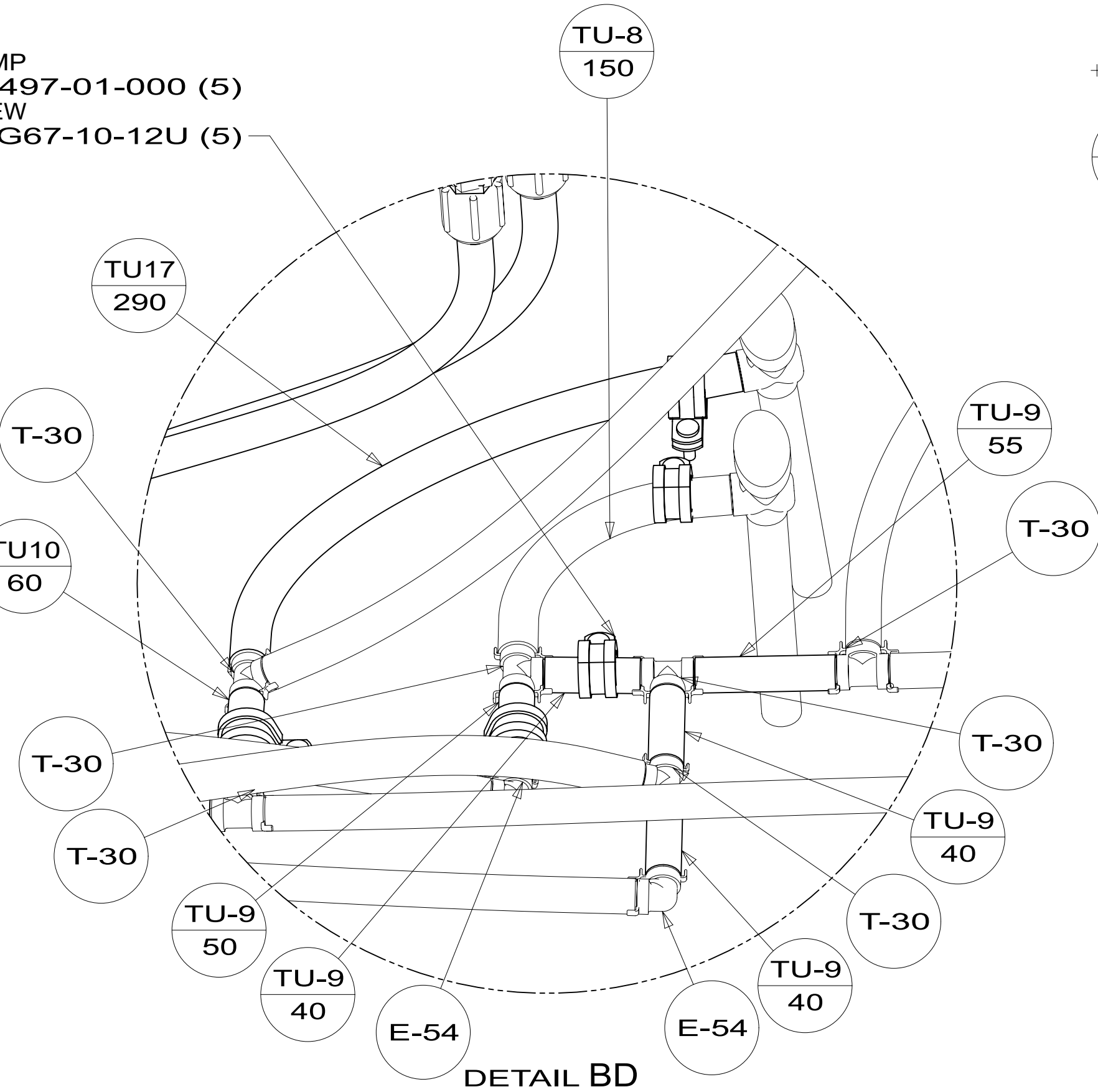
SCREW  
000G11-08-12U (3)

VIEW BE  
(SHOWN W/O FLOOR, CABINETS & SHOWER)

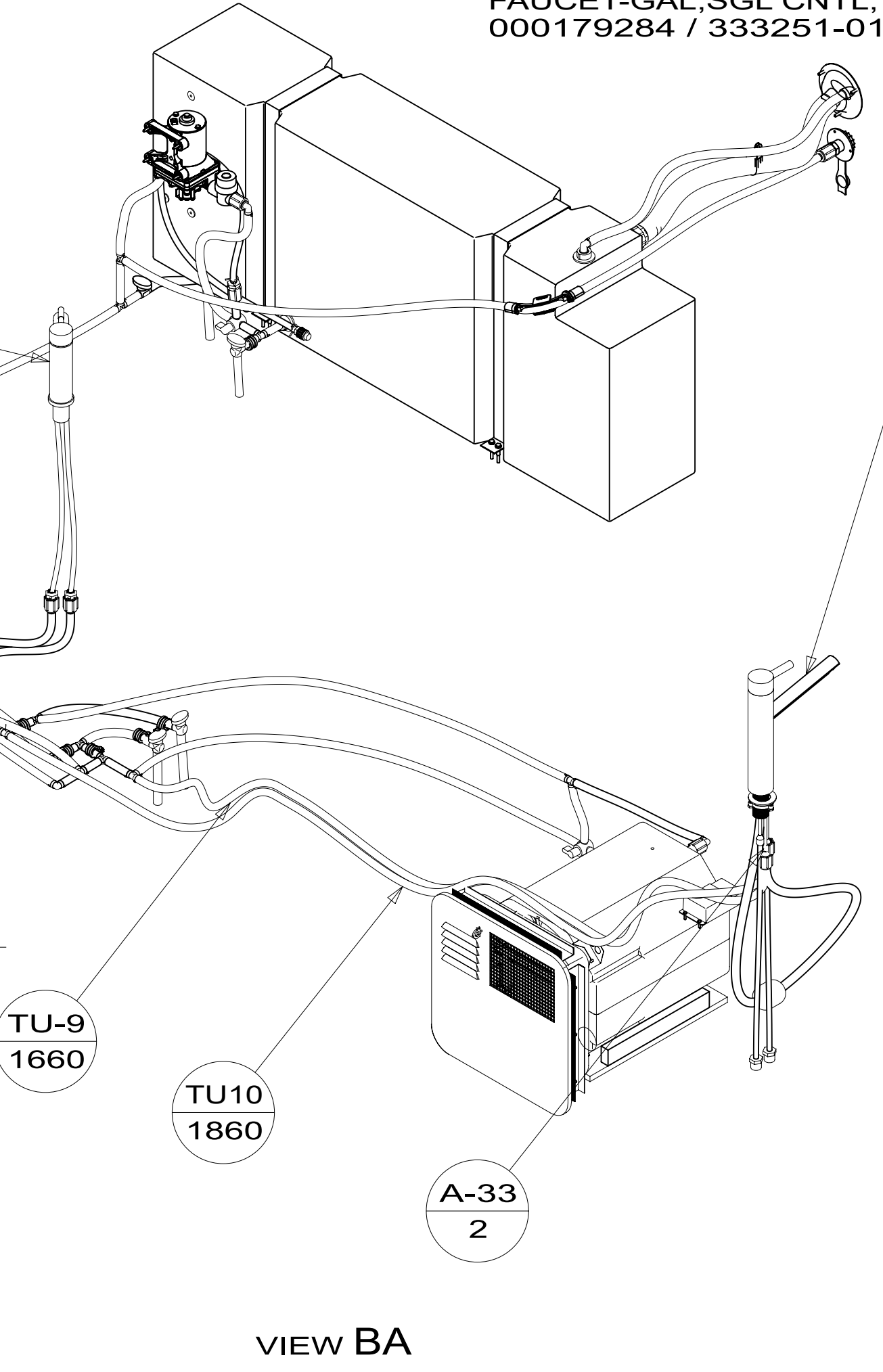
SECTION BB-BB



VIEW BC  
(SHOWN W/O FLOOR & CABINETS)

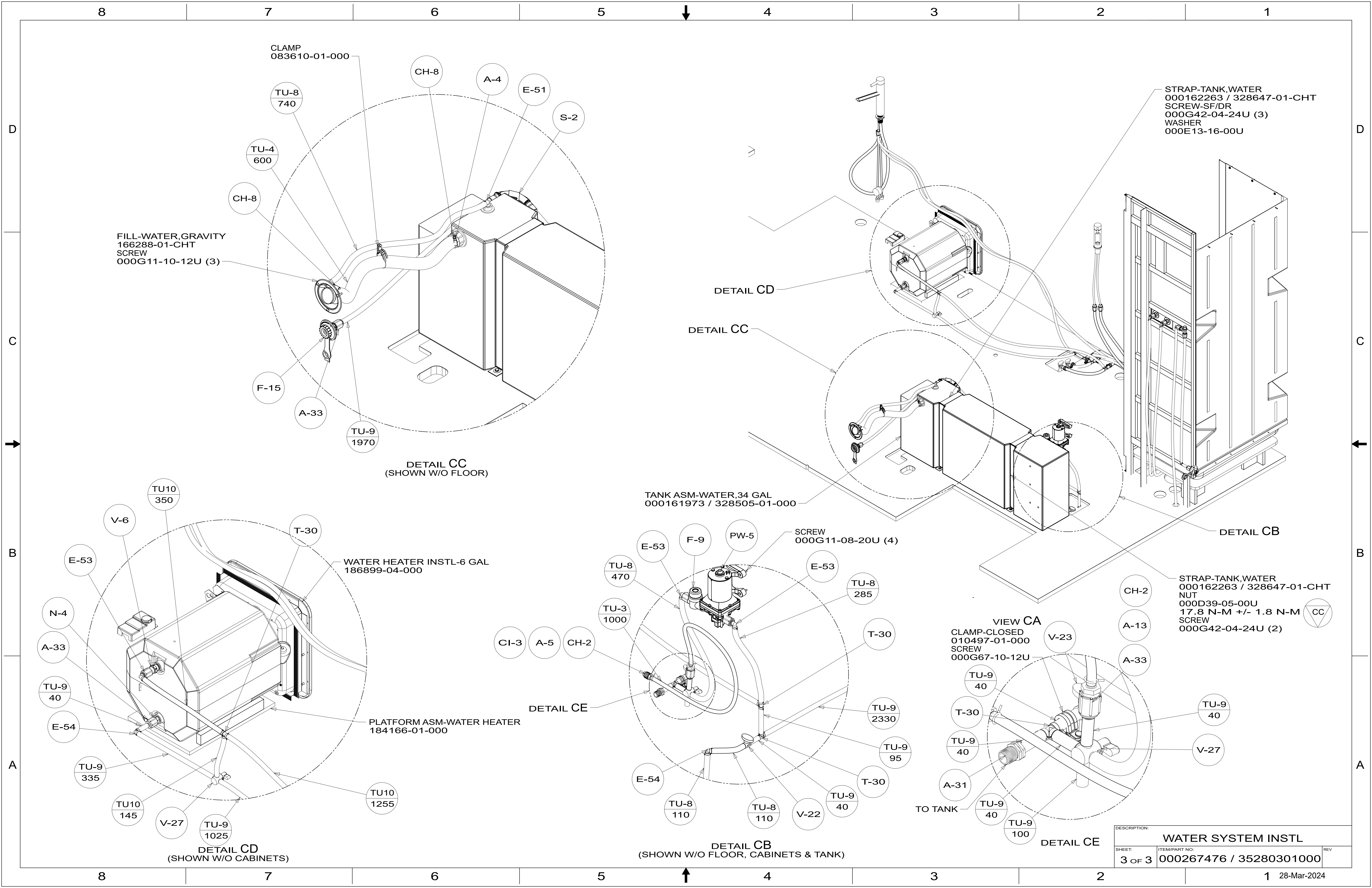


DETAIL BD



VIEW BA

DESCRIPTION:		
WATER SYSTEM INSTL		
SHEET:	ITEM/PART NO:	REV
2 OF 3	000267476 / 35280301000	



DESCRIPTION:		
WATER SYSTEM INSTL		
SHEET:	ITEM/PART NO.:	REV:
3 OF 3	000267476 / 35280301000	