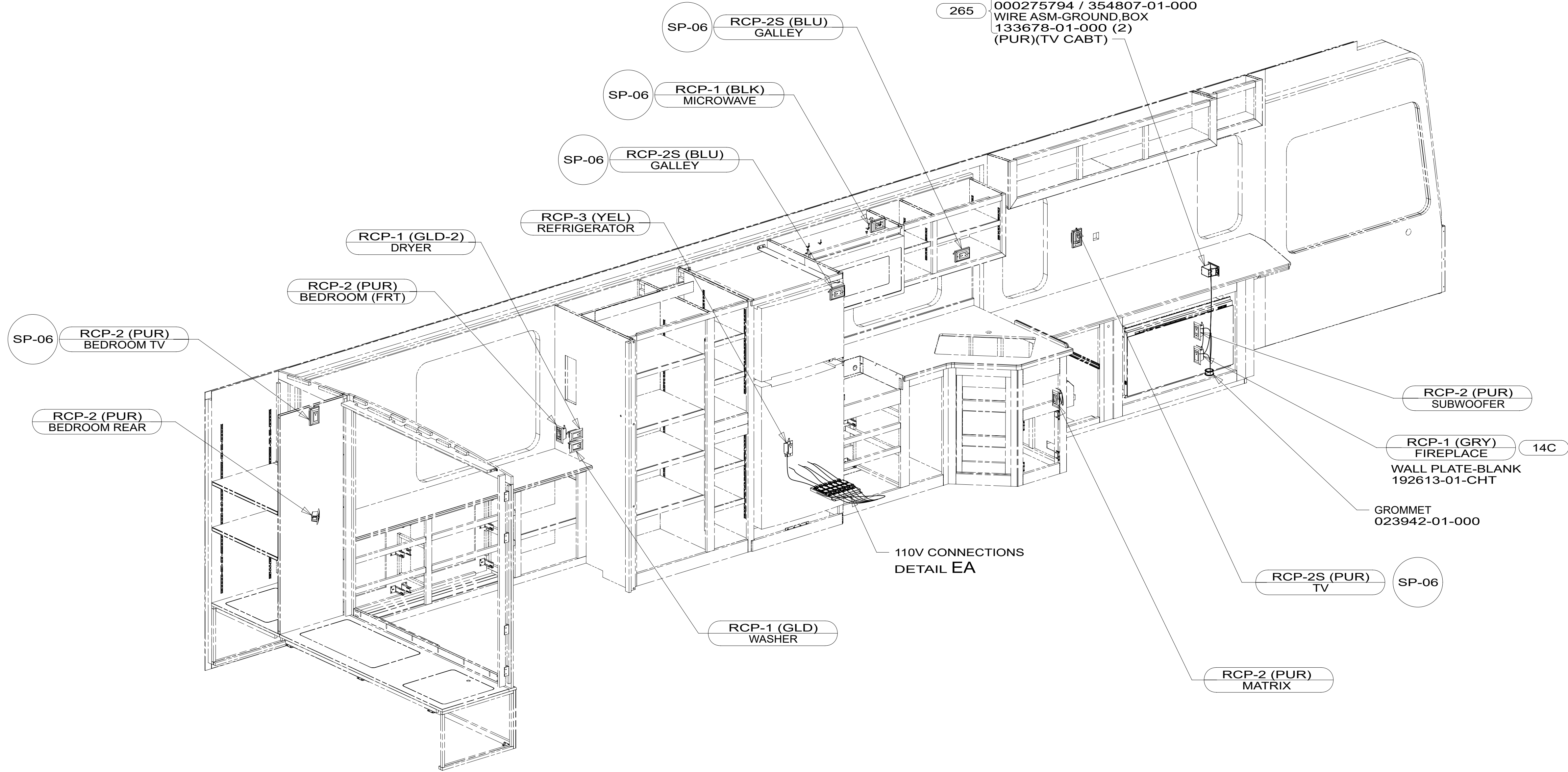


RECEPTACLE-110V / USB
 000025877 / 315435-01-CHT
 SCREW
 G13-07-12U (4)
 CONNECTOR
 8313-01-000
 TUBING-VINYL
 8041-03-000 (300 MM)
 BOX-ELEC-FIBERGLASS
 000213062 / 340536-01-000
 WIRE ASM-GROUND,BOX
 133678-03-000
 BOX-ELEC-STL 3.25X2.25X3.0
 000275794 / 354807-01-000
 WIRE ASM-GROUND,BOX
 133678-01-000 (2)
 (PUR)(TV CABT)



2 APPLY TO BARE GROUND WIRES.

1. AT MINIMUM ALL WIRES TO BE SUPPORTED AND SECURED PER CODE REQUIREMENTS. USE CLAMP 10495 OR 10497 OR WIRE TIE 8343 OR 108046 AND SCREW G67-XX-XXX OR G56-XX-XXX AS APPROPRIATE FOR INSTALLATION.

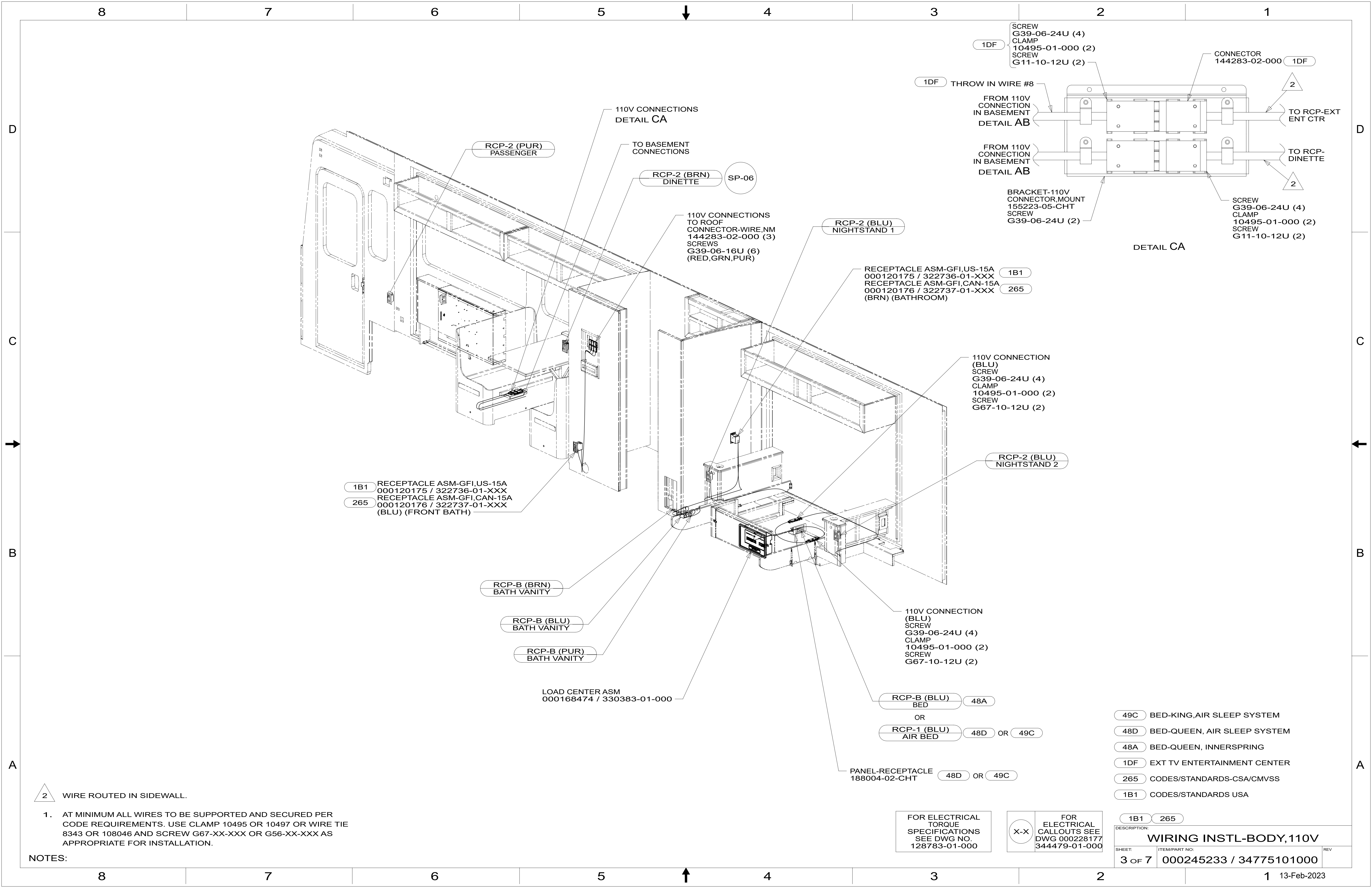
NOTES:

FOR ELECTRICAL TORQUE SPECIFICATIONS SEE DWG NO. 128783-01-000

FOR ELECTRICAL CALLOUTS SEE DWG 000228177 344479-01-000

- 14C FIREPLACE-ELECTRIC
- 265 CODES/STANDARDS-CSA/CMVSS
- 1B1 CODES/STANDARDS USA

DESCRIPTION:		1B1 265	
WIRING INSTL-BODY,110V			
SHEET:	ITEM/PART NO.:	REV:	
2 OF 7	000245233 / 34775101000		



2 WIRE ROUTED IN SIDEWALL.

1. AT MINIMUM ALL WIRES TO BE SUPPORTED AND SECURED PER CODE REQUIREMENTS. USE CLAMP 10495 OR 10497 OR WIRE TIE 8343 OR 108046 AND SCREW G67-XX-XXX OR G56-XX-XXX AS APPROPRIATE FOR INSTALLATION.

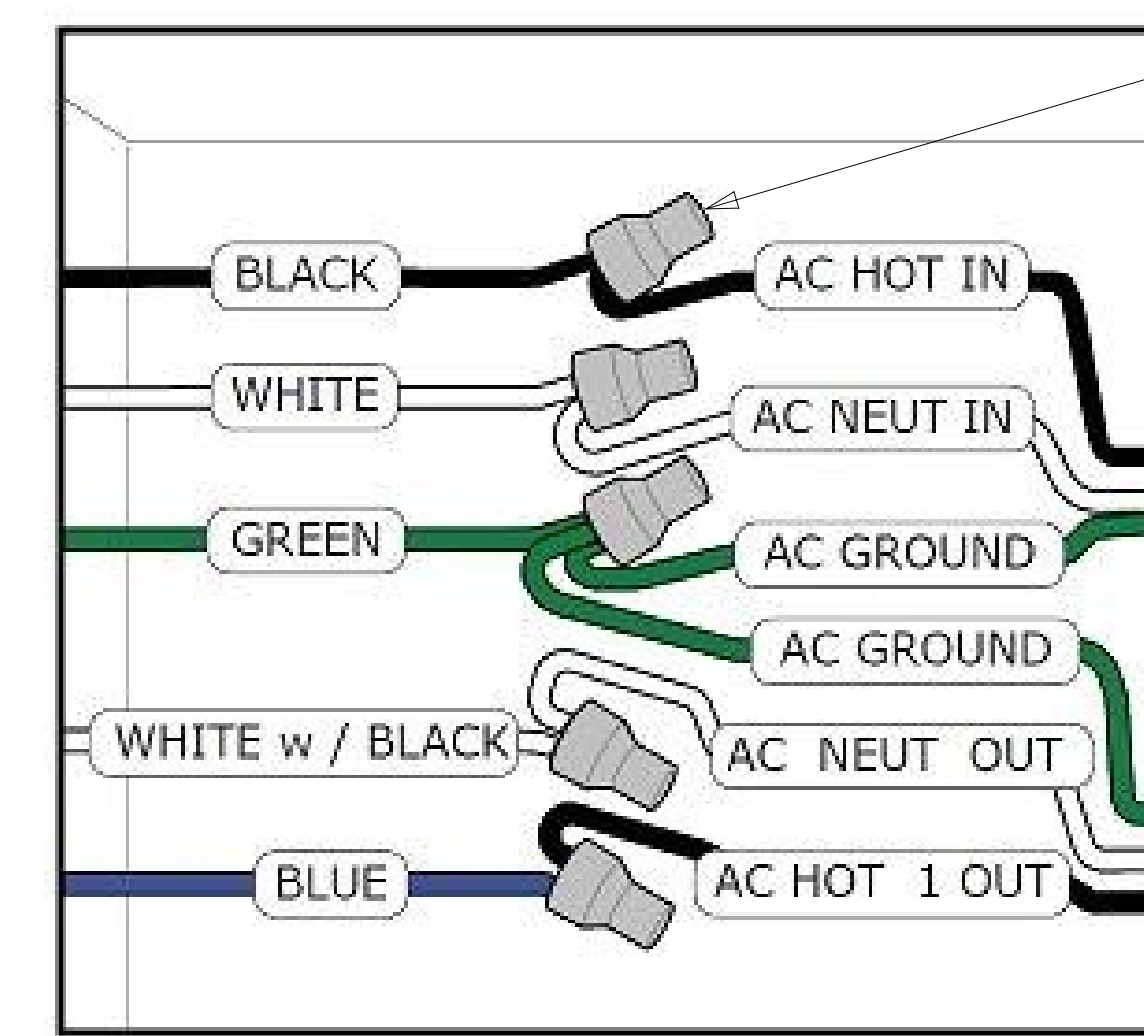
NOTES:

FOR ELECTRICAL TORQUE SPECIFICATIONS SEE DWG NO. 128783-01-000

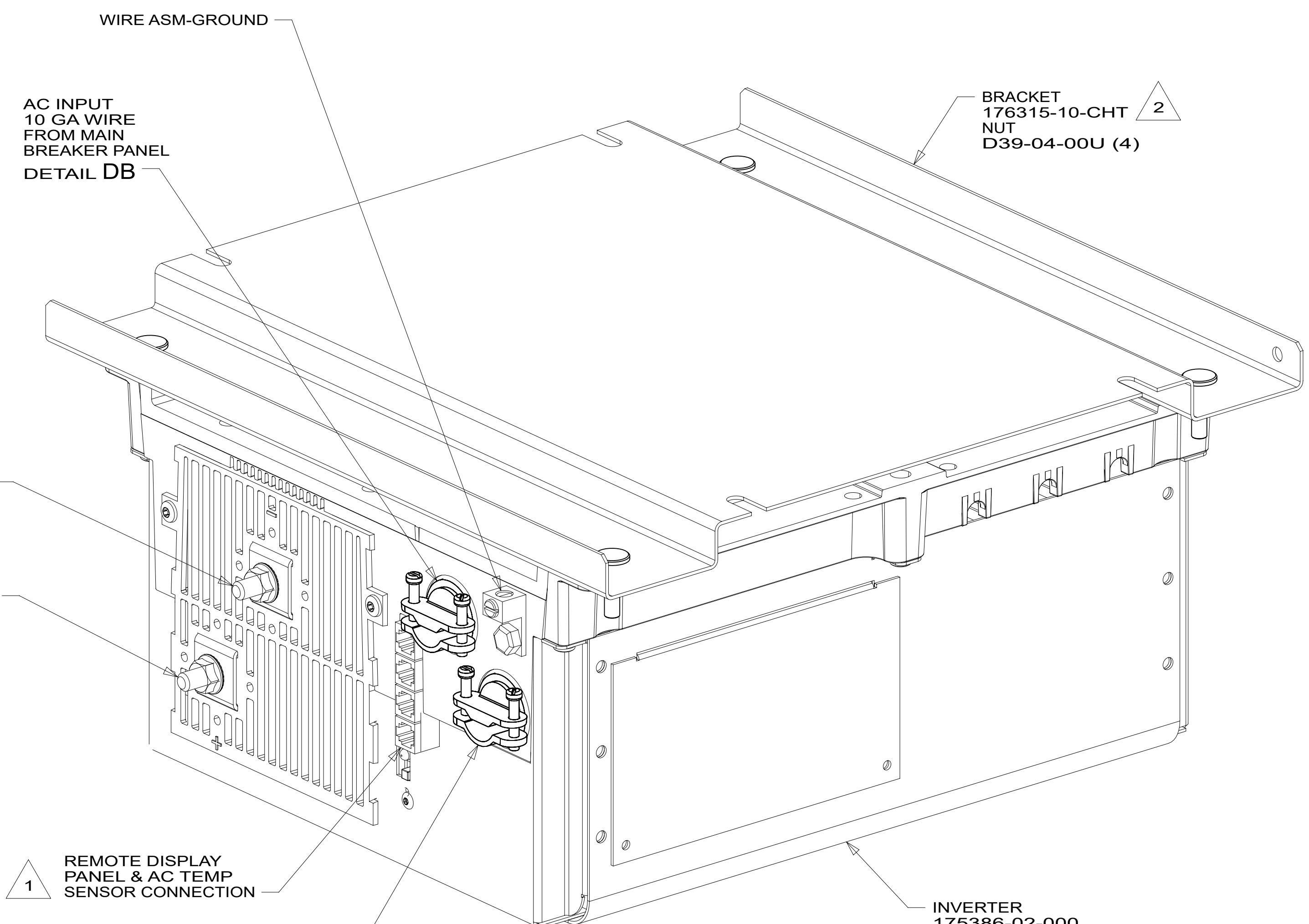
FOR ELECTRICAL CALLOUTS SEE DWG 000228177 344479-01-000

- 49C BED-KING, AIR SLEEP SYSTEM
- 48D BED-QUEEN, AIR SLEEP SYSTEM
- 48A BED-QUEEN, INNERSPRING
- 1DF EXT TV ENTERTAINMENT CENTER
- 265 CODES/STANDARDS-CSA/CMVSS
- 1B1 CODES/STANDARDS USA

DESCRIPTION:		1B1 265
WIRING INSTL-BODY, 110V		
SHEET:	ITEM/PART NO.:	REV:
3 OF 7	000245233 / 34775101000	



DETAIL DB



DETAIL DA

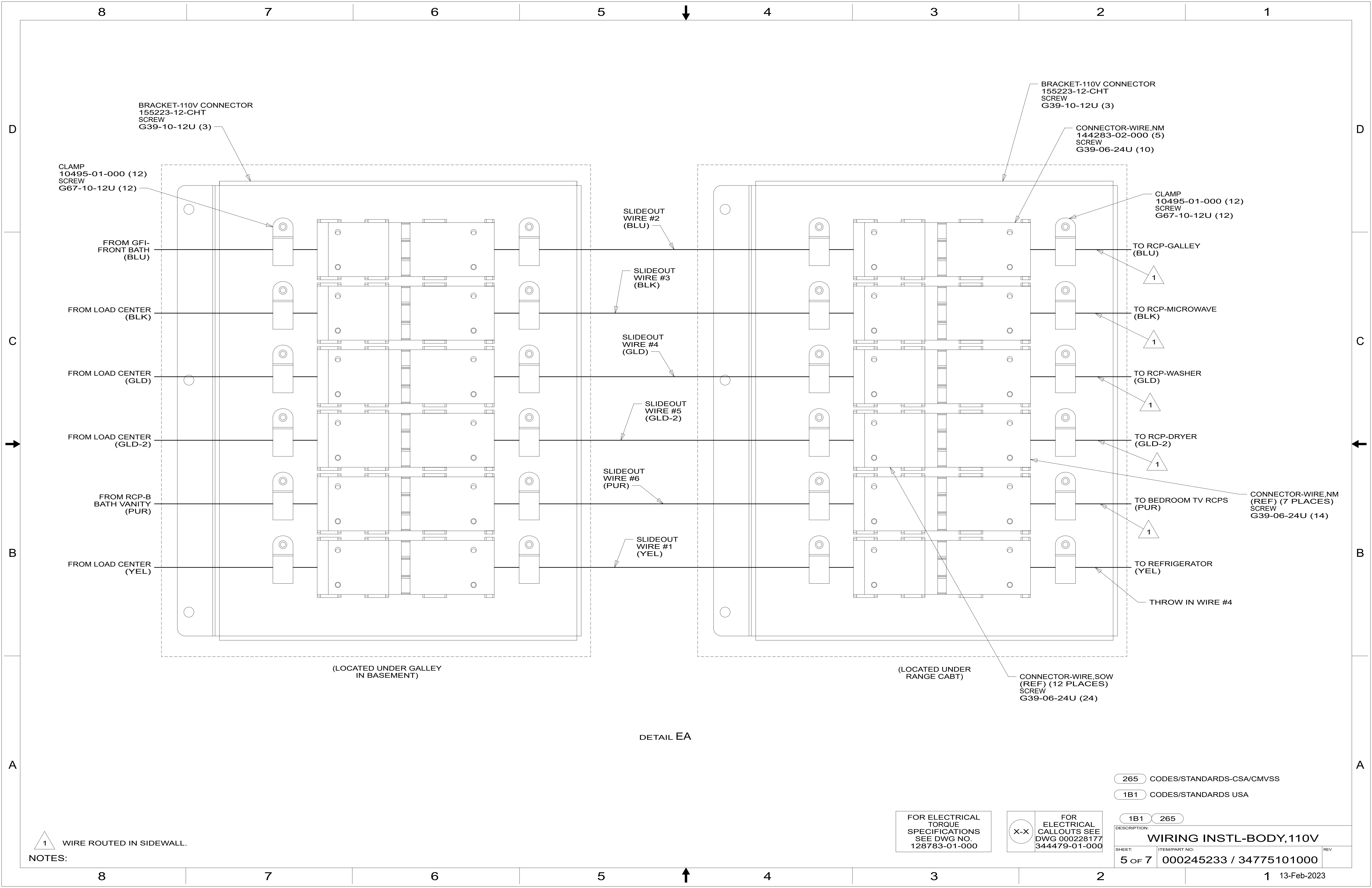
- NOTES:
- 4 DO NOT USE POWER/AIR TOOL TO INSTALL NUT. TORQUE TO 10-12 FT LBS. DO NOT USE A HAMMER.
 - 3 SEE WIRING INSTL-CHASSIS FOR ADDITIONAL INFORMATION.
 - 2 BRACKET IS LOCATED BY HOLES ON BRACKET.
 - 1 CABLES PART OF WIRE ASM-COACH.

FOR ELECTRICAL
TORQUE
SPECIFICATIONS
SEE DWG NO.
128783-01-000

FOR
ELECTRICAL
CALLOUTS SEE
DWG 000228177
344479-01-000

265 CODES/STANDARDS-CSA/CMVSS
1B1 CODES/STANDARDS USA

DESCRIPTION:	
WIRING INSTL-BODY,110V	
SHEET:	ITEM/PART NO.:
4 OF 7	000245233 / 34775101000
REV	



BRACKET-110V CONNECTOR
155223-12-CHT
SCREW
G39-10-12U (3)

CLAMP
10495-01-000 (12)
SCREW
G67-10-12U (12)

BRACKET-110V CONNECTOR
155223-12-CHT
SCREW
G39-10-12U (3)

CONNECTOR-WIRE,NM
144283-02-000 (5)
SCREW
G39-06-24U (10)

SLIDEOUT
WIRE #2
(BLU)

SLIDEOUT
WIRE #3
(BLK)

SLIDEOUT
WIRE #4
(GLD)

SLIDEOUT
WIRE #5
(GLD-2)

SLIDEOUT
WIRE #6
(PUR)

SLIDEOUT
WIRE #1
(YEL)

CLAMP
10495-01-000 (12)
SCREW
G67-10-12U (12)

TO RCP-GALLEY
(BLU)

TO RCP-MICROWAVE
(BLK)

TO RCP-WASHER
(GLD)

TO RCP-DRYER
(GLD-2)

TO BEDROOM TV RCPS
(PUR)

TO REFRIGERATOR
(YEL)

THROW IN WIRE #4

CONNECTOR-WIRE,NM
(REF) (7 PLACES)
SCREW
G39-06-24U (14)

CONNECTOR-WIRE,SOW
(REF) (12 PLACES)
SCREW
G39-06-24U (24)

(LOCATED UNDER GALLEY
IN BASEMENT)

(LOCATED UNDER
RANGE CABT)

DETAIL EA

265 CODES/STANDARDS-CSA/CMVSS

1B1 CODES/STANDARDS USA

1B1 265

FOR ELECTRICAL
TORQUE
SPECIFICATIONS
SEE DWG NO.
128783-01-000

FOR
ELECTRICAL
CALLOUTS SEE
DWG 000228177
344479-01-000

DESCRIPTION: WIRING INSTL-BODY,110V		
SHEET: 5 OF 7	ITEM/PART NO.: 000245233 / 34775101000	REV

1 WIRE ROUTED IN SIDEWALL.

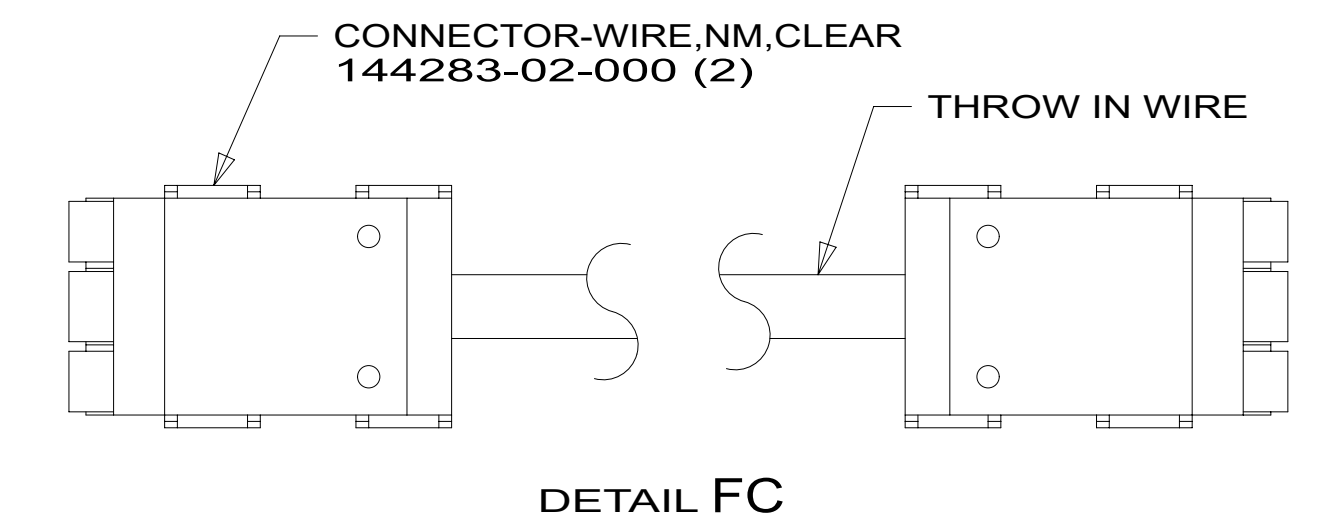
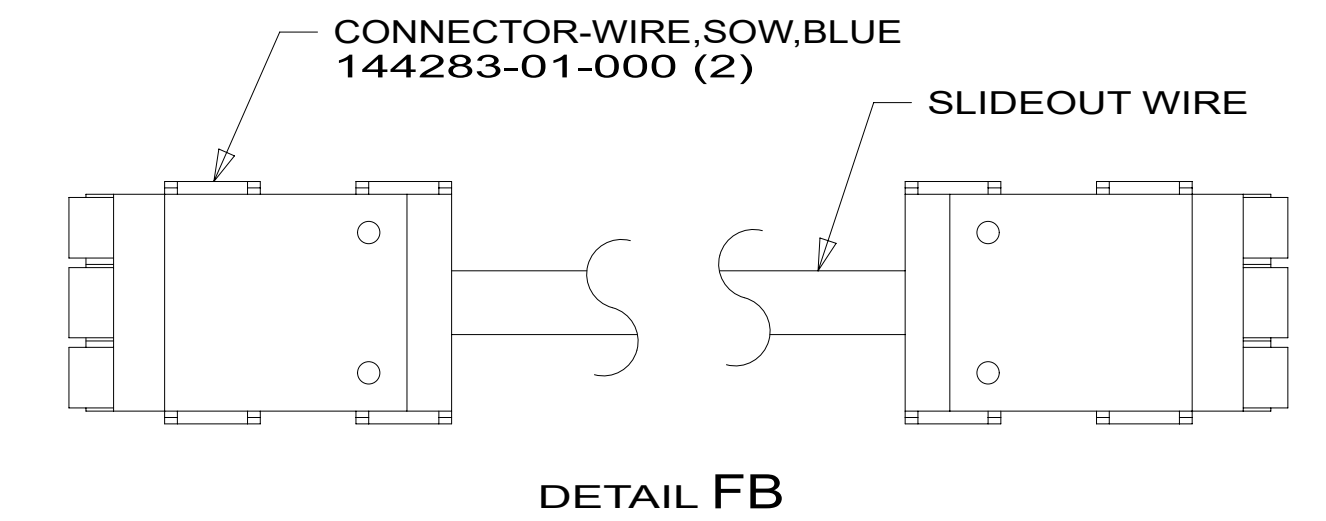
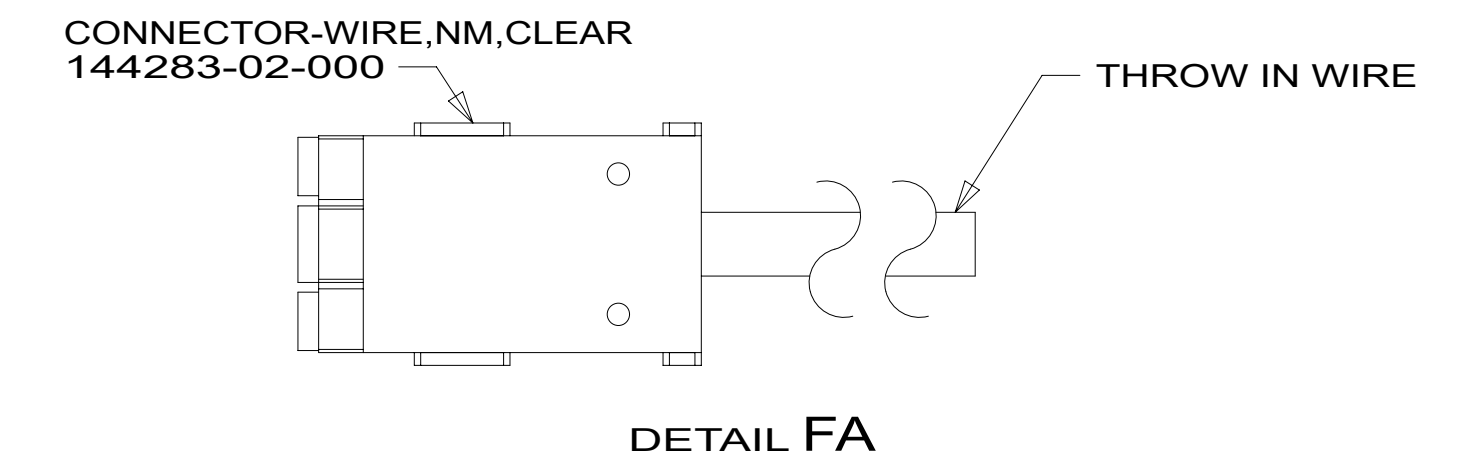
NOTES:

RED	1B1	136135-07-065	1
	265	136136-07-065	1
GRN	1B1	136135-08-065	1
	265	136136-08-065	1
YEL	1B1	136131-05-056	1
	265	136134-05-056	1
GLD	1B1	136131-10-055	1
	265	136134-10-055	1
GLD-2	1B1	136131-20-055	1
	265	136134-20-055	1
BLU	1B1	136131-02-118	1
	265	136134-02-118	1
BRN	1B1	136131-03-085	
	265	136134-03-085	
PUR	1B1	136131-04-150	
	265	136134-04-150	

ORG	1B1	136131-16-030	
	265	136134-16-030	
BLK	1B1	136131-06-057	1
	265	136134-06-057	1
GRY	1B1	136131-15-103	
	265	136134-15-103	
INVERTER CHARGER MAIN	1B1	136137-01-028	
	265	136138-01-028	
INVERTER CHARGER SUB MAIN	1B1	136137-01-028	
	265	136138-01-028	
CABLE ASM-MAIN,6 AWG		176841-01-034	
MAIN GROUND		136145-01-025	
ATS GROUND		136145-01-015	
INVERTER GROUND		136145-04-022	
GENERATOR CABLE ASM		136148-02-109	

THROW IN WIRE #1	1B1	136131-02-062	1
	265	136134-02-062	1
THROW IN WIRE #2	1B1	136131-04-080	3
	265	136134-04-080	3
THROW IN WIRE #3	1B1	136131-02-003	1
	265	136134-02-003	1
THROW IN WIRE #4	1B1	136131-05-007	1
	265	136134-05-007	1
THROW IN WIRE #5	1B1	136131-02-070	1
	265	136134-02-070	1
THROW IN WIRE #6	1B1	136131-03-045	1
	265	136134-03-045	1

SLIDEOUT WIRE #1	136151-05-019	2	
SLIDEOUT WIRE #2	136151-02-019	2	
SLIDEOUT WIRE #3	136151-06-019	2	
SLIDEOUT WIRE #4	136151-10-019	2	
SLIDEOUT WIRE #5	136151-20-019	2	
SLIDEOUT WIRE #6	136151-04-019	2	
SLIDEOUT WIRE #7	136151-02-015	2	
SLIDEOUT WIRE #8	136151-02-025	2	1DF
SLIDEOUT WIRE #9	136151-03-025	2	



- NOTES:
- 3 SEE DETAIL FC FOR CONNECTON INSTALLATION.
 - 2 SEE DETAIL FB FOR CONNECTON INSTALLATION.
 - 1 SEE DETAIL FA FOR CONNECTON INSTALLATION.

FOR ELECTRICAL TORQUE SPECIFICATIONS SEE DWG NO. 128783-01-000

FOR ELECTRICAL CALLOUTS SEE DWG 000228177 344479-01-000

- 1DF EXT TV ENTERTAINMENT CENTER
- 265 CODES/STANDARDS-CSA/CMVSS
- 1B1 CODES/STANDARDS USA

DESCRIPTION:	1B1 265	
WIRING INSTL-BODY,110V		
SHEET:	ITEM/PART NO.:	REV
6 OF 7	000245233 / 34775101000	

