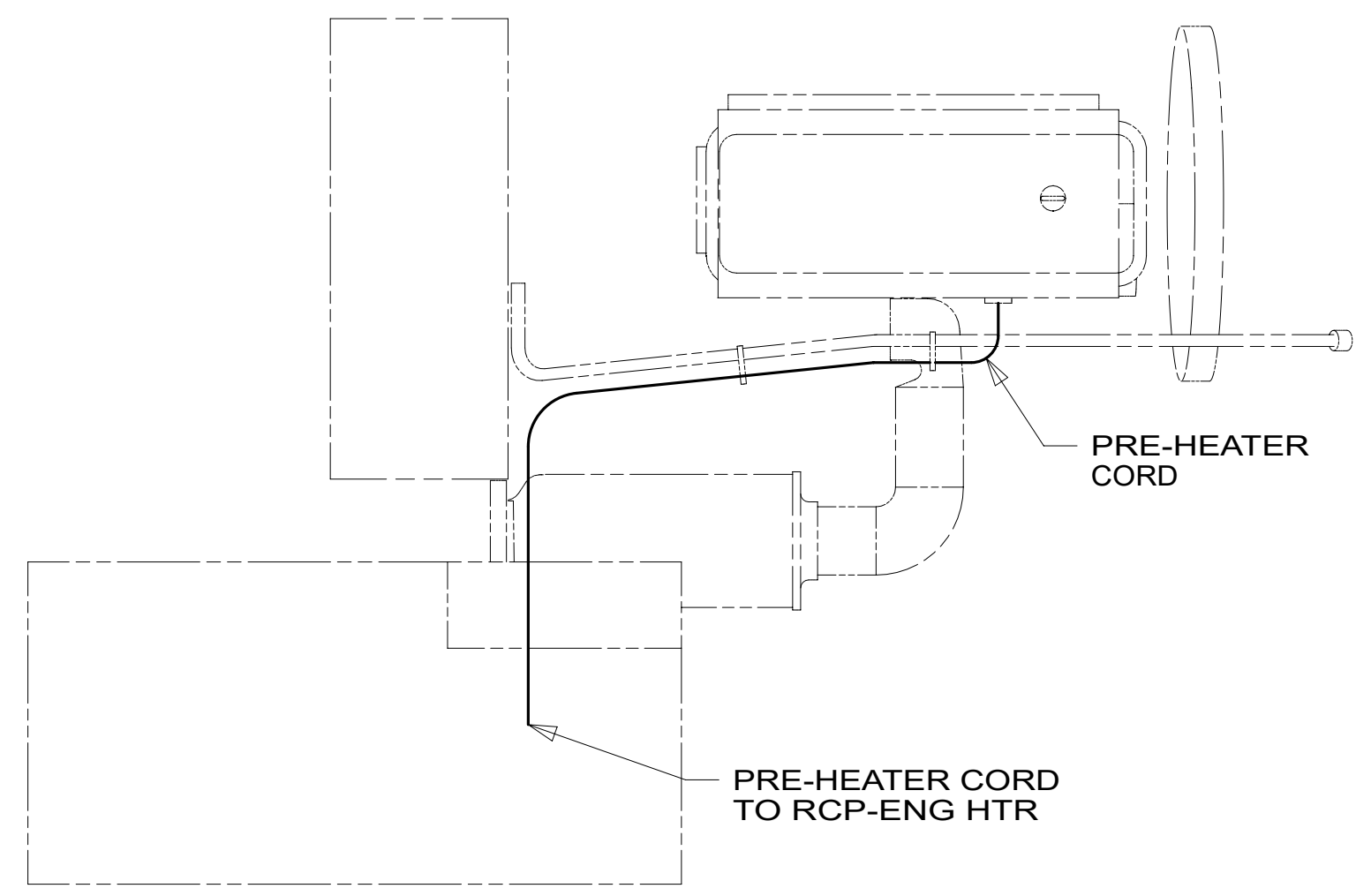


- 6 CLAMP 83610-01-000, SCREW G39-08-12U.
- 5 CLAMP 10497-03-000, SCREW G39-08-12U.
- 4 USE TIE-WIRE 8343-04-000 TO SECURE WIRES TO FLOOR SUPPORT FRAME AT LEAST ONCE EVERY 600MM.
- 3 SECURE CORD AWAY FROM ALL MOVING PARTS AND EXHAUST WITH WIRE-TIE 8343-04-000 AS REQUIRED
- 2 SEE WIRING INSTL-FRONT END FOR ADDITIONAL INFORMATION.
- 1 REST WIRE IN FRAME RAIL WHEN APPLICABLE.

NOTES:



DETAIL AA 3

CC

INDICATES A CRITICAL CHARACTERISTIC. ENSURE PROPER PROCEDURES ARE FOLLOWED.

SC

INDICATES A SIGNIFICANT CHARACTERISTIC. ENSURE PROPER PROCEDURES ARE FOLLOWED.

KC

INDICATES A KEY CHARACTERISTIC. ENSURE PROPER PROCEDURES ARE FOLLOWED.

FOR ELECTRICAL TORQUE SPECIFICATIONS SEE DWG NO. 128783-01-000

X-X

FOR ELECTRICAL CALLOUTS SEE DWG 000228177 344479-01-000

265

CODES/STANDARDS-CSA/CMVSS

1B1

CODES/STANDARDS USA

1B1

265

WINNEBAGO

COPYRIGHT 2024 WINNEBAGO INDUSTRIES, INC.

DSNR:		ALL DIMENSIONS ARE IN MILLIMETERS	
DFTR:			
UNSPECIFIED TOLERANCES:		MATERIAL:	
WHOLE DIM (X)	± 3		
ONE-PLACE (X.X)	± 1.5		
TWO-PLACE (X.XX)	± 0.50		
ANGLE	± 1°		
REFER TO ES0018 FOR FASTENER TIGHTENING GUIDELINES		WEIGHT: (LBS)	FIRST USED:
			22 L38W

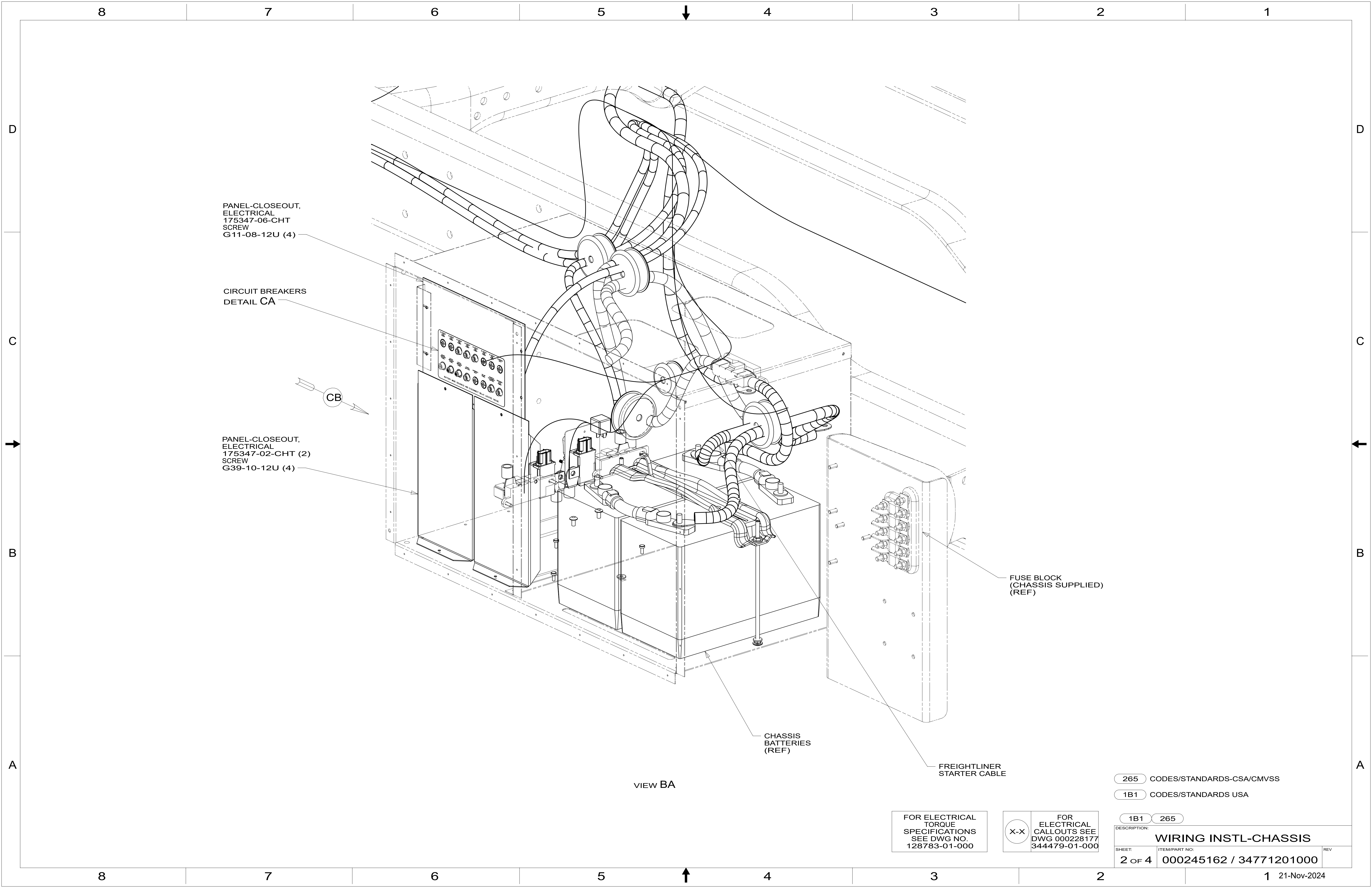
WIRING INSTL-CHASSIS

SHEET: 1 OF 4

ITEM/PART NO: 000245162 / 34771201000

REF: 1

21-Nov-2024



PANEL-CLOSEOUT,  
ELECTRICAL  
175347-06-CHT  
SCREW  
G11-08-12U (4)

CIRCUIT BREAKERS  
DETAIL CA

CB

PANEL-CLOSEOUT,  
ELECTRICAL  
175347-02-CHT (2)  
SCREW  
G39-10-12U (4)

FUSE BLOCK  
(CHASSIS SUPPLIED)  
(REF)

CHASSIS  
BATTERIES  
(REF)

FREIGHTLINER  
STARTER CABLE

VIEW BA

FOR ELECTRICAL  
TORQUE  
SPECIFICATIONS  
SEE DWG NO.  
128783-01-000

FOR  
ELECTRICAL  
CALLOUTS SEE  
DWG 000228177  
344479-01-000

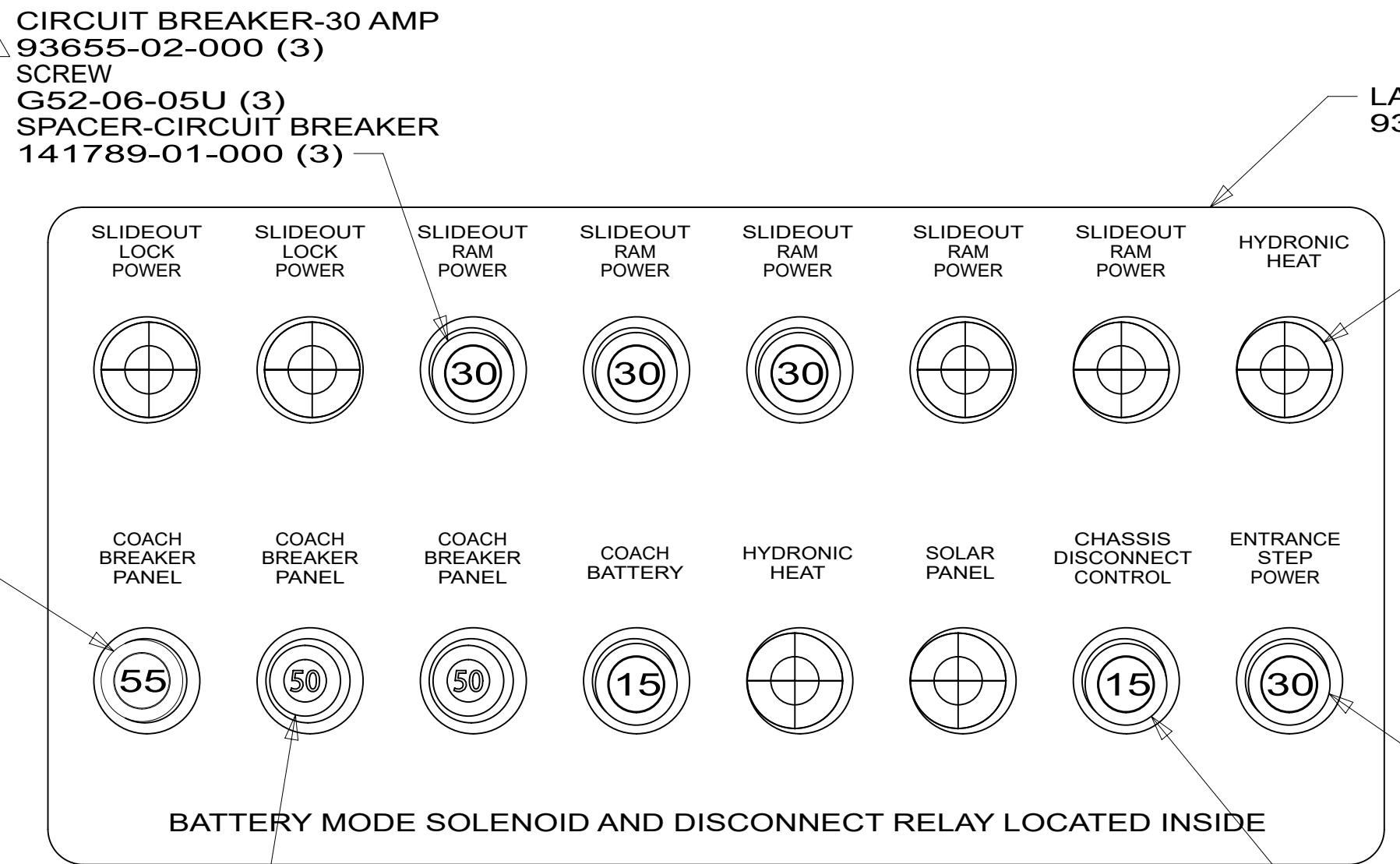
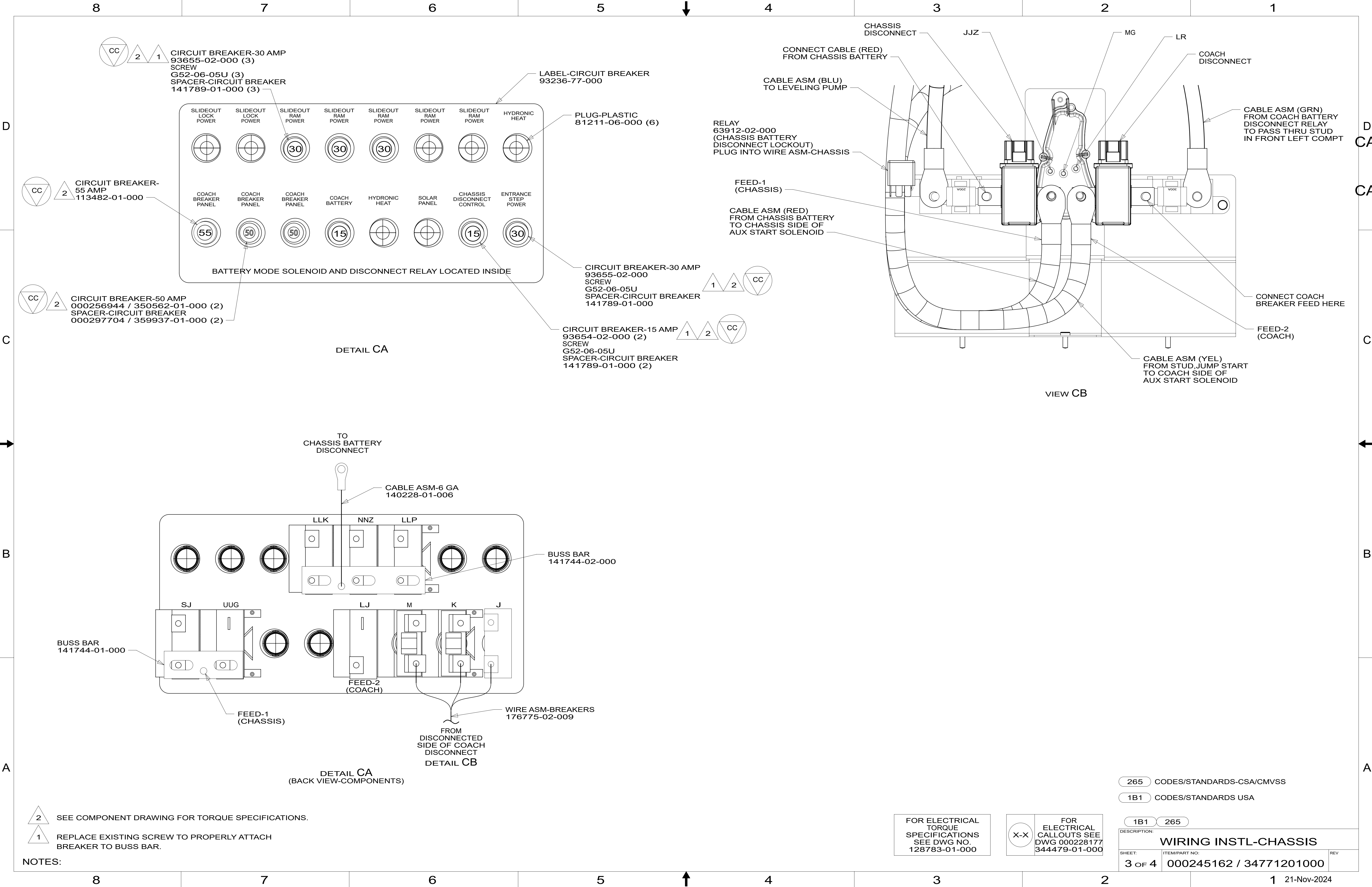
265 CODES/STANDARDS-CSA/CMVSS

1B1 CODES/STANDARDS USA

1B1 265

DESCRIPTION:  
**WIRING INSTL-CHASSIS**

SHEET: 2 OF 4	ITEM/PART NO: 000245162 / 34771201000	REV
------------------	--	-----



RELAY  
63912-02-000  
(CHASSIS BATTERY  
DISCONNECT LOCKOUT)  
PLUG INTO WIRE ASM-CHASSIS

CABLE ASM (RED)  
FROM CHASSIS BATTERY  
TO CHASSIS SIDE OF  
AUX START SOLENOID

CIRCUIT BREAKER-30 AMP  
93655-02-000  
SCREW  
G52-06-05U  
SPACER-CIRCUIT BREAKER  
141789-01-000

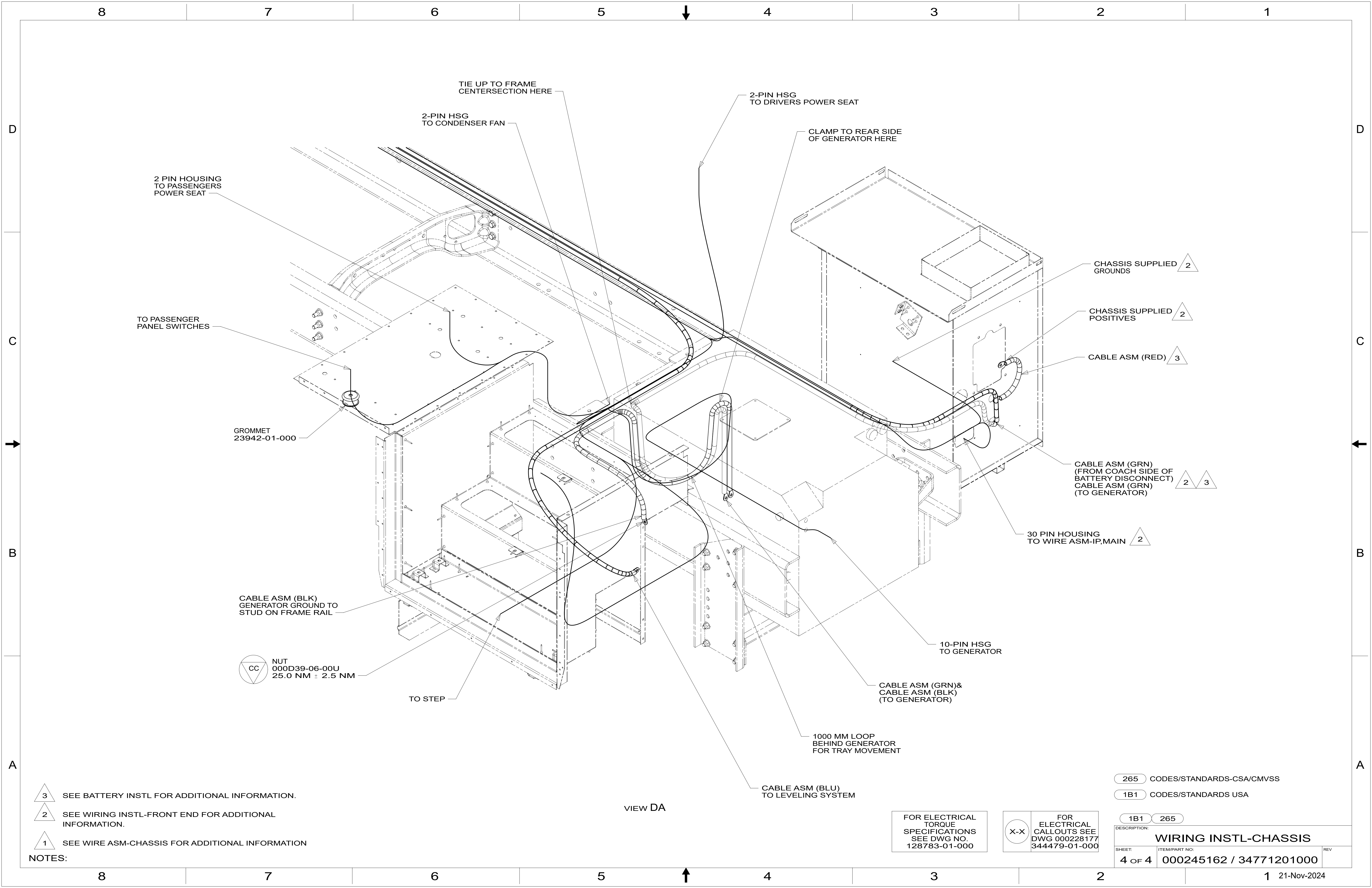
CIRCUIT BREAKER-15 AMP  
93654-02-000 (2)  
SCREW  
G52-06-05U  
SPACER-CIRCUIT BREAKER  
141789-01-000 (2)

265 CODES/STANDARDS-CSA/CMVSS

1B1 CODES/STANDARDS USA

1B1 265

DESCRIPTION:		
WIRING INSTL-CHASSIS		
SHEET:	ITEM/PART NO:	REV
3 OF 4	000245162 / 34771201000	



D

C

B

A

D

C

B

A

- 3

SEE BATTERY INSTL FOR ADDITIONAL INFORMATION.
- 2

SEE WIRING INSTL-FRONT END FOR ADDITIONAL INFORMATION.
- 1

SEE WIRE ASM-CHASSIS FOR ADDITIONAL INFORMATION

NOTES:

VIEW DA

FOR ELECTRICAL  
TORQUE  
SPECIFICATIONS  
SEE DWG NO.  
128783-01-000

FOR  
ELECTRICAL  
CALLOUTS SEE  
DWG 000228177  
344479-01-000

- 265 CODES/STANDARDS-CSA/CMVSS
- 1B1 CODES/STANDARDS USA

DESCRIPTION: <b>WIRING INSTL-CHASSIS</b>		
SHEET: <b>4 OF 4</b>	ITEM/PART NO: <b>000245162 / 34771201000</b>	REV