

12 DO NOT USE SPACER SUPPLIED WITH DROP ELL.

11 REMOVE WATER HEATER DOOR STRAPS AND HARDWARE.

10 INSTALL BYPASS PLUG FOR SYSTEM TESTING AND SHIPPING.

9. ALL CRIMP FITTINGS TO 3/4" PEX TUBING REQUIRE 3/4" CLAMP 140171-05-000.

8. ALL CRIMP FITTINGS TO 1/2" PEX TUBING REQUIRE 1/2" CLAMP 140171-03-000.

7. ALL CRIMP FITTINGS TO 5/8" FLEX TUBING REQUIRE 5/8" CLAMP 140171-04-000.

6 LABEL HOT AND COLD SUPPLY TUBES AND TAPE FITTING TO TUBE BEFORE CABINET SET TO PREVENT MOVEMENT.

5 ADD PIPE WRAP (LADDER SCRAP 110157-02-000) INSULATION.

4 ADD TEFLON TAPE 010405-01-000.

3. ALL TUBING TO BE SECURED AT 1200 INTERVALS MAXIMUM WITH CLAMP 010495-01-000 AND SCREW 000G67-10-12U OR EQUIVALENT.

2. TUBING TO BE INSTALLED WITH SUFFICIENT SLOPE TO PROVIDE DRAINAGE TO NEAREST VALVE.

1. PLASTIC FITTINGS TO BE SEALED WITH SEALANT 084456-01-000.

NOTES:

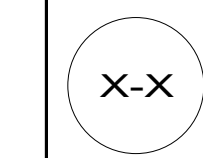
21M WASHER/DRYER PREP

21S WASHER & DRYER-PAIR



DSNR:		ALL DIMENSIONS ARE IN MILLIMETERS	
DFTR:		MATERIAL:	
UNSPECIFIED TOLERANCES:			
WHOLE DIM (X)	: 3		
ONE-PLACE (X.X)	: 1.5		
TWO-PLACE (X.XX)	: 0.50		
ANGLE	: 1°		
REFER TO ES0018 FOR FASTENER TIGHTENING GUIDELINES		WEIGHT: (LBS)	FIRST USED: (REF)
			22 L38W
DESCRIPTION: WATER SYSTEM INSTL			
SHEET:	ITEM/PART NO.:	REV	
1 OF 6	000245156 / 34770901000		

FOR WATER CALLOUTS SEE DWG NO. 000209446 / 303369-01-000



FAUCET-GAL, SGL CNTL, MID SPOUT
000179284 / 333251-01-CHT

SHOWER HEAD-W/HOSE & BRKT
000162058 / 328585-01-CHT

BRACKET-SHOWER HEAD
143218-03-CHT
DROP ELL
000251849 / 349569-01-CHT
PLATE-COVER
000120549 / 322781-01-CHT

FAUCET-VALVE, SHOWER
144596-01-CHT
FAUCET-TRIM KIT
144596-02-CHT

SECTION BC-BC
(ROTATED)

TO SINK

DETAIL BF

TU-9
1175
TU10
1190

TO SHOWER

A-31
3

TU-9
40

T-30

TU10
2470

TU10
1550

TU-9
1365

DETAIL BH
(SHOWN W/OUT FLOOR)

BREAKER-VACUUM, FLUSHING SYS
000030488 / 316731-01-000

E-53

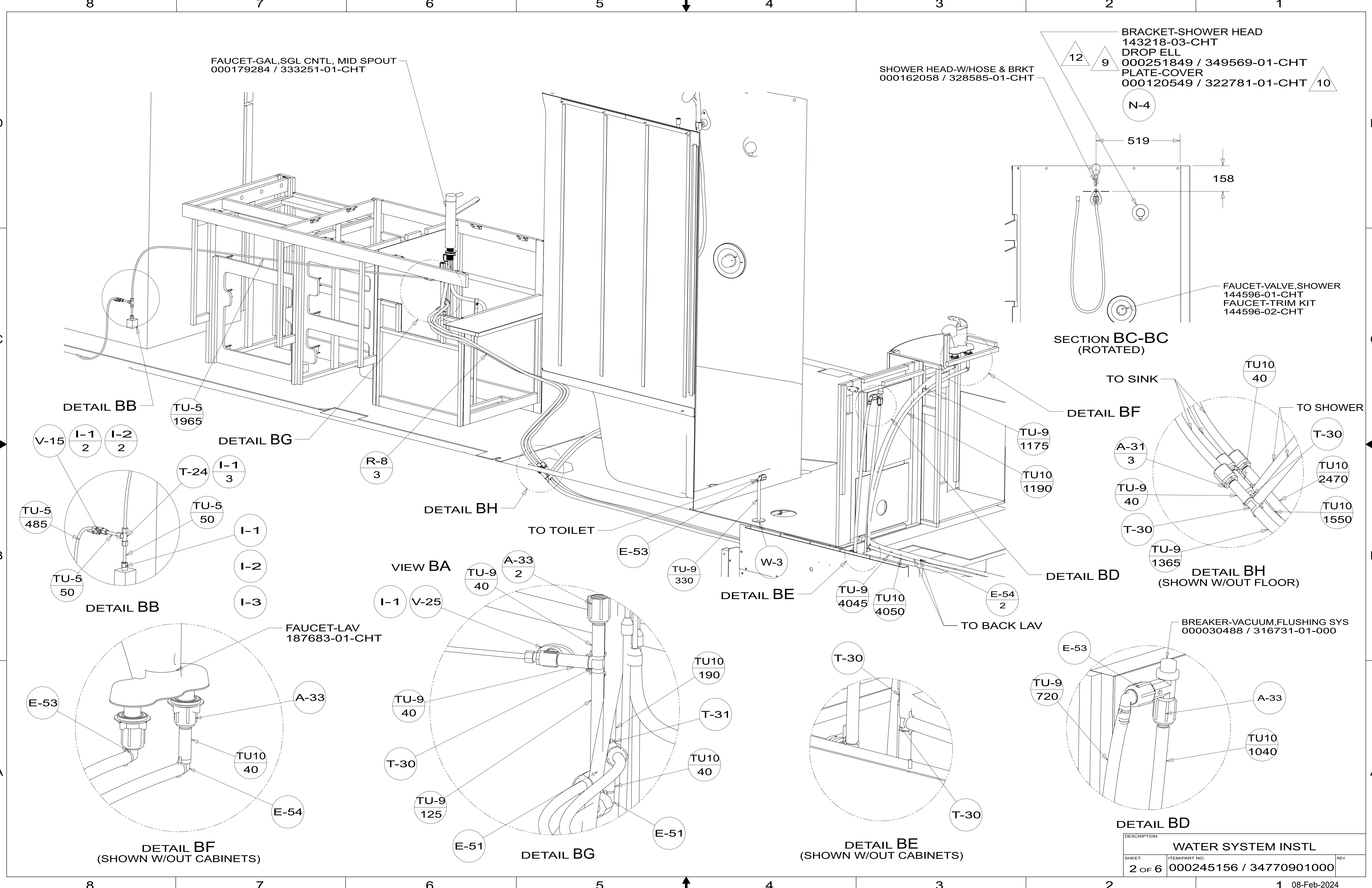
TU-9
720

A-33

TU10
1040

DETAIL BD

DESCRIPTION: WATER SYSTEM INSTL		
SHEET: 2 OF 6	ITEM/PART NO: 000245156 / 34770901000	REV



DETAIL BB
V-15
I-1
2
I-2
2

TU-5
1965

DETAIL BG

T-24
I-1
3

I-1

TU-5
50

I-1

I-2

I-3

DETAIL BB
TU-5
485
TU-5
50

DETAIL BB

FAUCET-LAV
187683-01-CHT

E-53

A-33

TU10
40

E-54

DETAIL BF
(SHOWN W/OUT CABINETS)

R-8
3

DETAIL BH

TO TOILET

E-53

TU-9
330

W-3

DETAIL BE

TU-9
4045

TU10
4050

TO BACK LAV

T-30

DETAIL BE
(SHOWN W/OUT CABINETS)

T-30

VIEW BA

I-1

V-25

TU-9
40

A-33
2

TU-9
40

T-30

TU-9
125

E-51

DETAIL BG

TU10
190

T-31

TU10
40

E-51

←

→

A

A

D

D

C

C

B

B

A

A

D

D

C

C

B

B

A

A

D

D

C

C

B

B

A

A

D

D

C

C

B

B

A

A

8

7

6

5

4

3

2

1

8

7

6

5

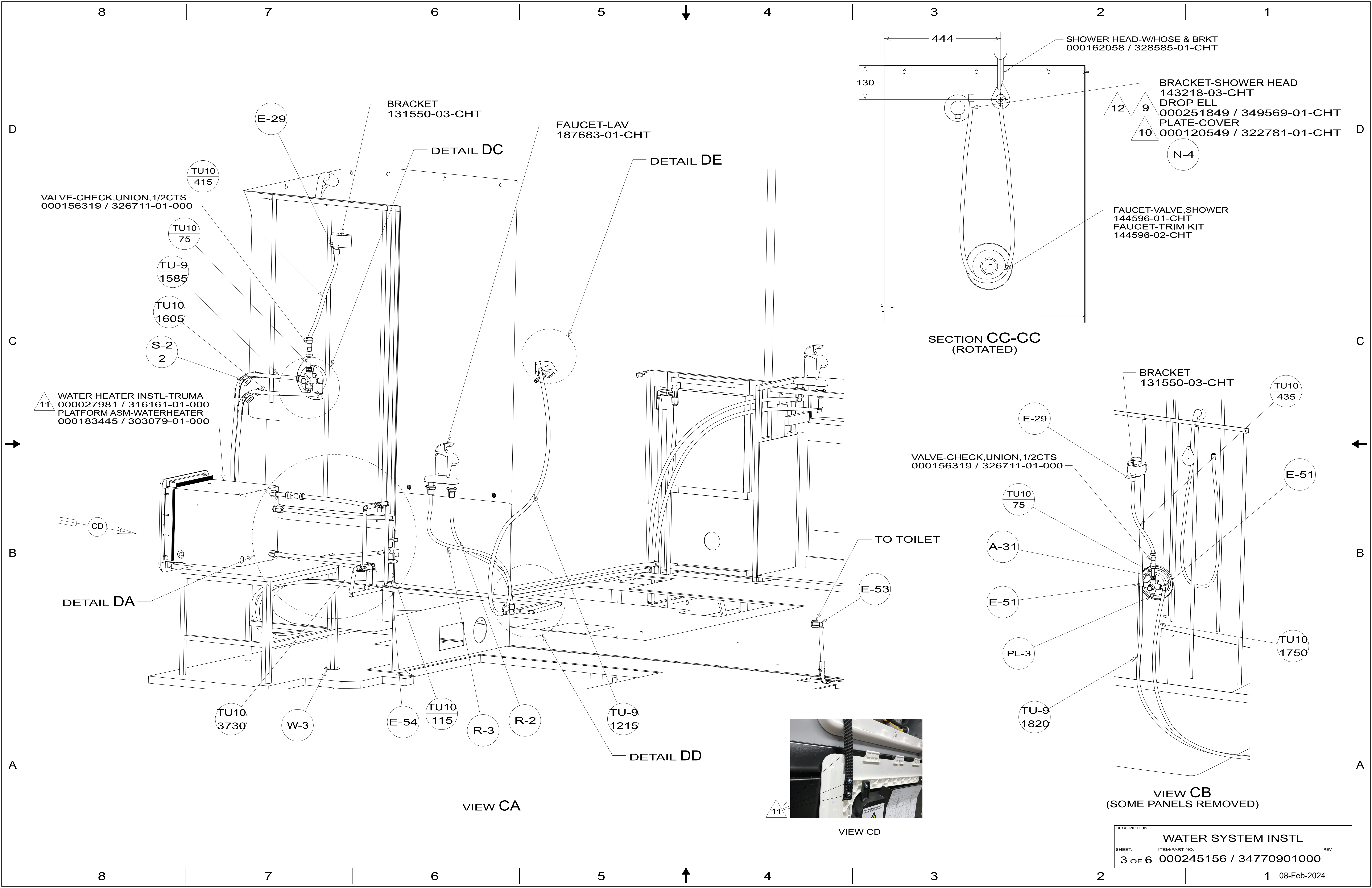
4

3

2

1

08-Feb-2024



VALVE-CHECK, UNION, 1/2CTS
000156319 / 326711-01-000

11 WATER HEATER INSTL-TRUMA
000027981 / 316161-01-000
PLATFORM ASM-WATERHEATER
000183445 / 303079-01-000

E-29 BRACKET
131550-03-CHT

FAUCET-LAV
187683-01-CHT

444
130
SHOWER HEAD-W/HOSE & BRKT
000162058 / 328585-01-CHT

BRACKET-SHOWER HEAD
143218-03-CHT
DROP ELL
000251849 / 349569-01-CHT
PLATE-COVER
000120549 / 322781-01-CHT

FAUCET-VALVE, SHOWER
144596-01-CHT
FAUCET-TRIM KIT
144596-02-CHT

SECTION CC-CC
(ROTATED)

VALVE-CHECK, UNION, 1/2CTS
000156319 / 326711-01-000

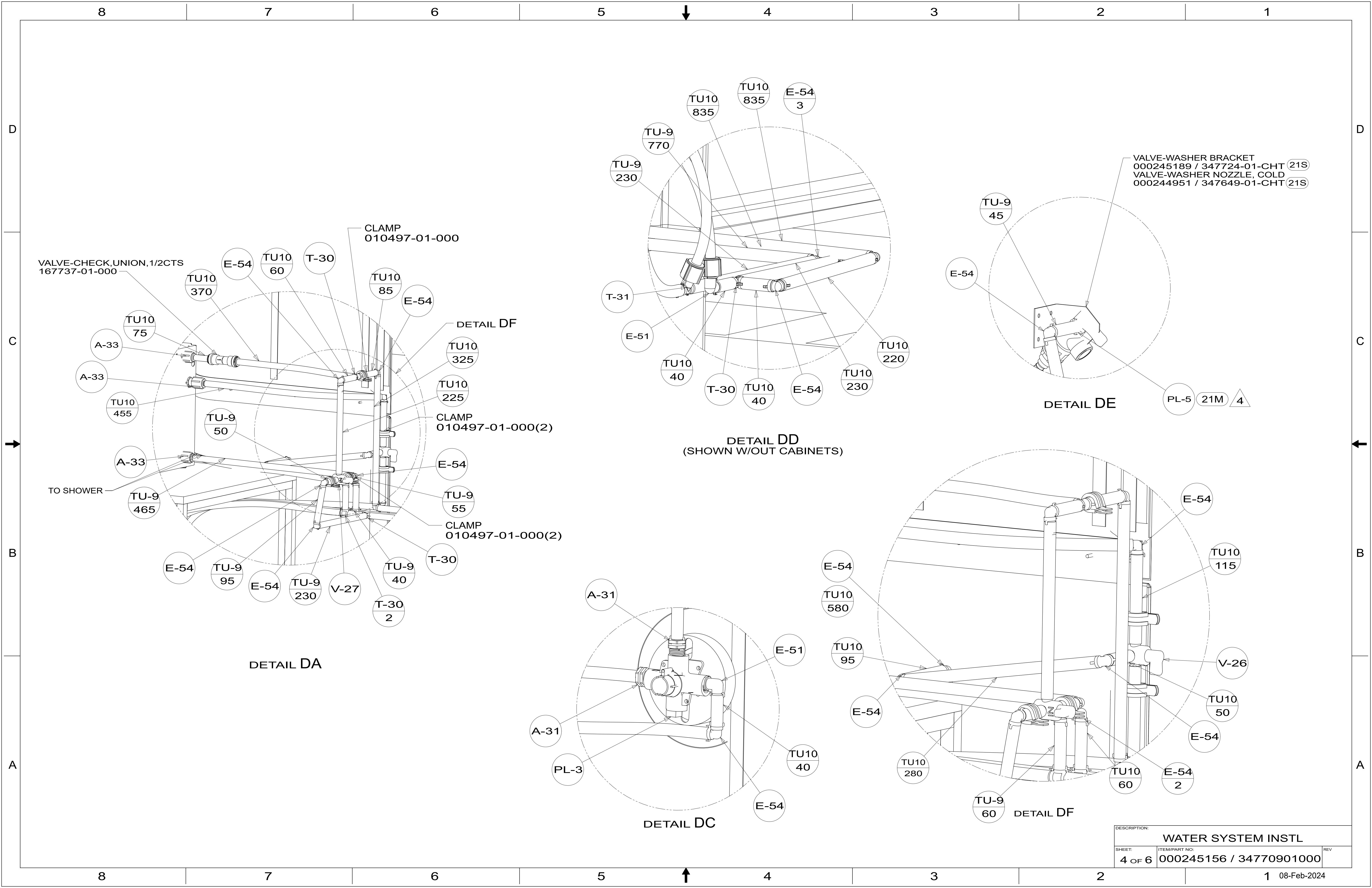
BRACKET
131550-03-CHT

TO TOILET

VIEW CB
(SOME PANELS REMOVED)



DESCRIPTION: WATER SYSTEM INSTL		
SHEET: 3 OF 6	ITEM/PART NO: 000245156 / 34770901000	REV



VALVE-CHECK, UNION, 1/2CTS
167737-01-000

CLAMP
010497-01-000

DETAIL DF

CLAMP
010497-01-000(2)

CLAMP
010497-01-000(2)

DETAIL DA

DETAIL DD
(SHOWN W/OUT CABINETS)

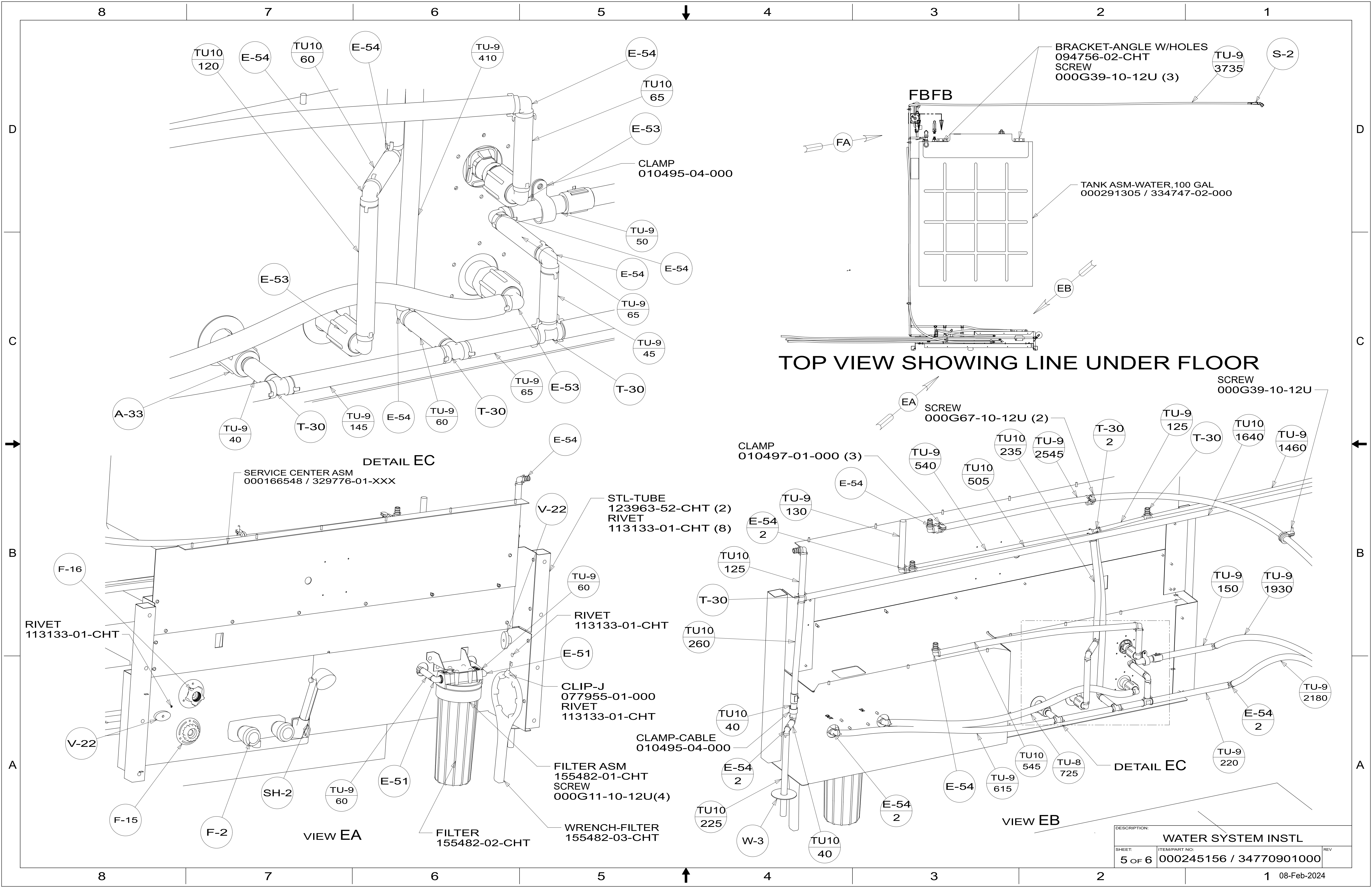
DETAIL DE

DETAIL DC

DETAIL DF

VALVE-WASHER BRACKET
000245189 / 347724-01-CHT (21S)
VALVE-WASHER NOZZLE, COLD
000244951 / 347649-01-CHT (21S)

DESCRIPTION: WATER SYSTEM INSTL		
SHEET: 4 OF 6	ITEM/PART NO: 000245156 / 34770901000	REV



DESCRIPTION:		
WATER SYSTEM INSTL		
SHEET:	ITEM/PART NO.:	REV
5 OF 6	000245156 / 34770901000	

