

- 10. CUT TAIL PIECE TO FIT.
- 9. PLACE PLYWOOD UNDER SHOWER AS REQUIRED.
- 8. SECURE DRAINAGE PIPES TO CABINET USING WIRE TIE 108046-02-000, AND SCREW 000G67-10-12U AT INTERVALS OF NOT MORE THAN 4 FEET APART.
- 7. SECURE VENT PIPE TO FLOOR WITH CLAMP 000156237 / 326663-02-000 (2), SCREW 000G67-10-12U (2), BRACKET 136878-01-CHT (2).
- 6. VENT PIPE MUST PROJECT 51 MIN AND 64 MAX ABOVE ROOF FOR PROPER FIT AND FUNCTION. ADD S-1 (000156099 / 326607-01-CHT SEAL-VENT CAP) AROUND PIPE ON ROOF BEFORE VENT CAP IS INSTALLED.
- 5. SEAL AROUND SHOWER WITH SILICONE.
- 4. USE SMOOTH PLUMBERS PUTTY 167459-01-000 TO SEAL STRAINER (0.2 PER STRAINER).
- 3. ALL PIPE AND FITTINGS TO BE ASSEMBLED WITH SOLVENT 004020-01-000 (USA), 004020-02-000 (CAN)
- 2. SLOPE OF TRAP ARM MUST BE 6 PER 305 mm.
- 1. SLOPE OF HORIZONTAL PIPING TO BE MINIMUM OF 3 PER 305 mm.

NOTES:

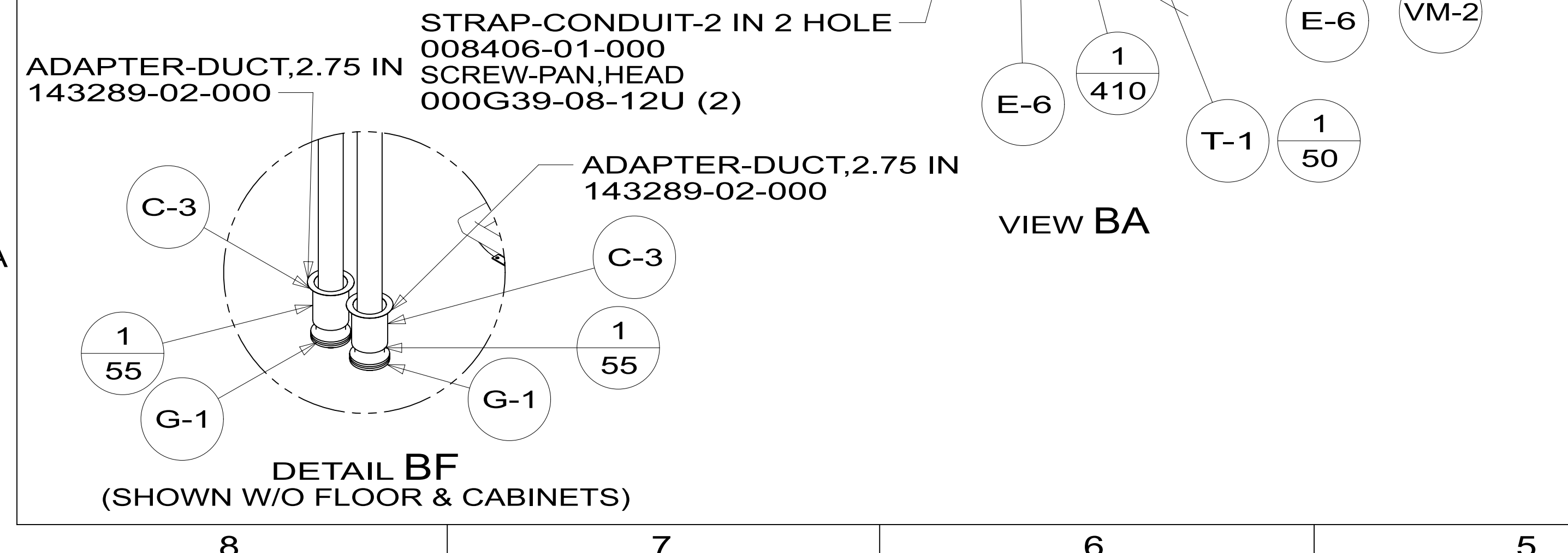
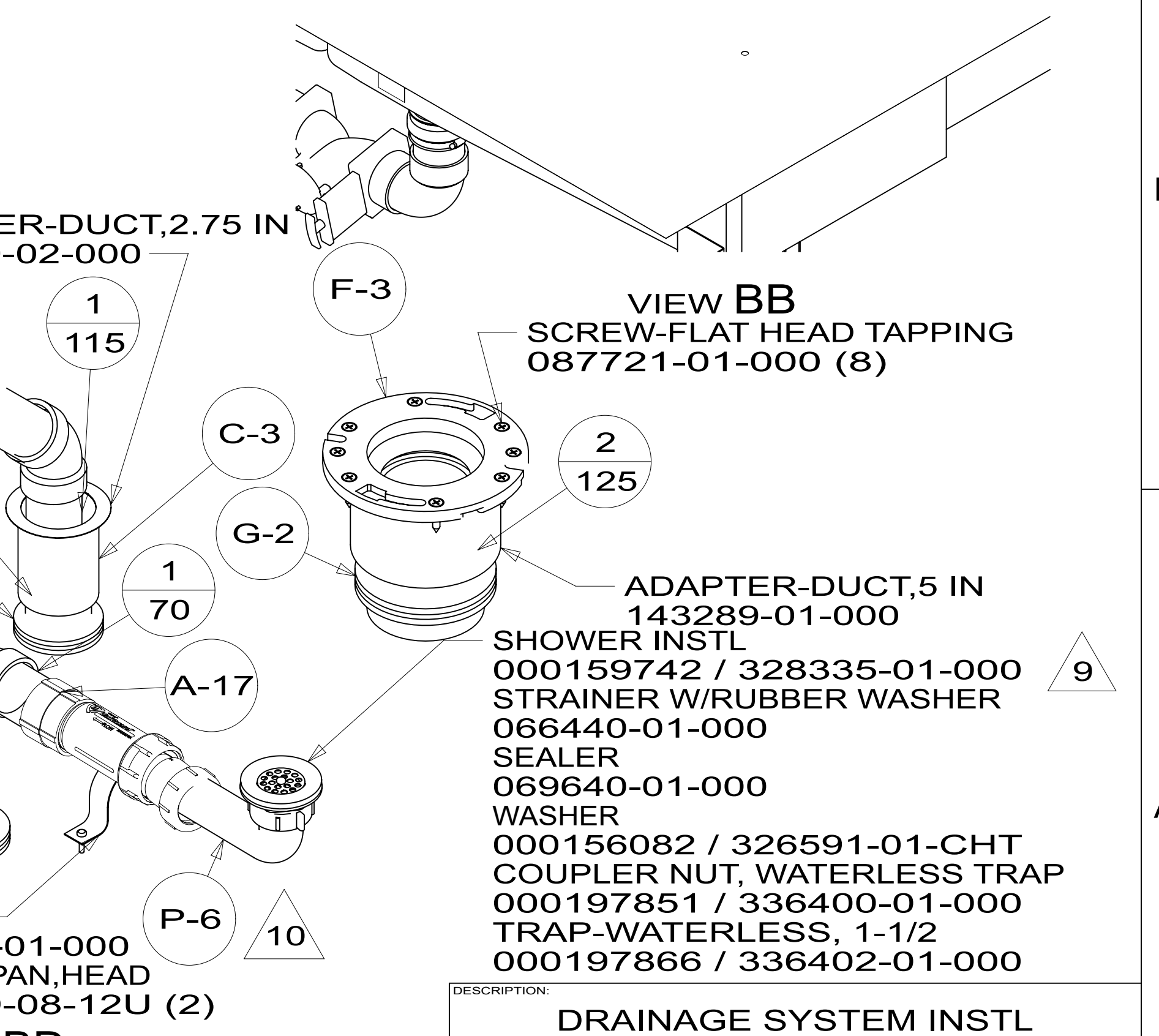
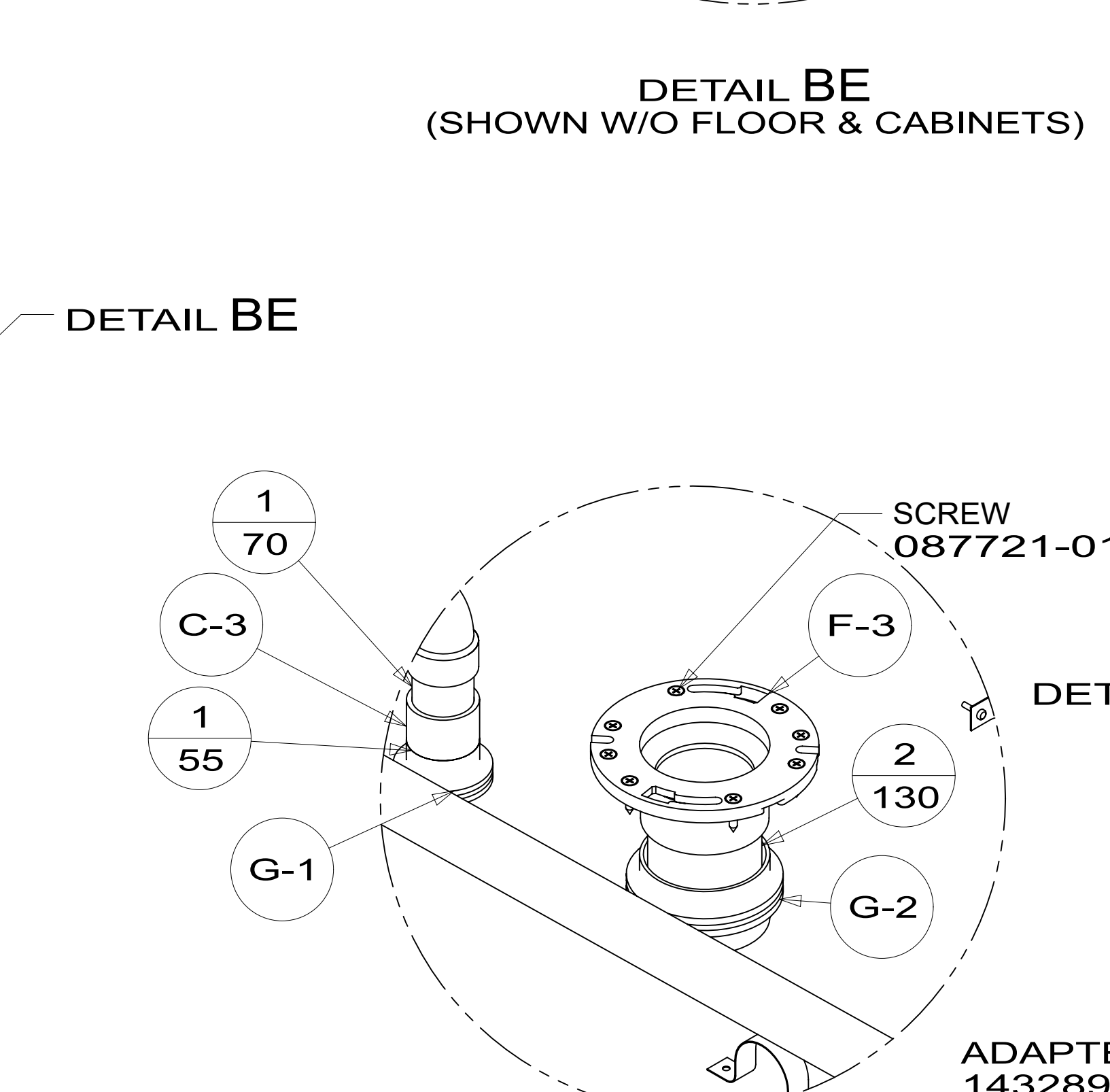
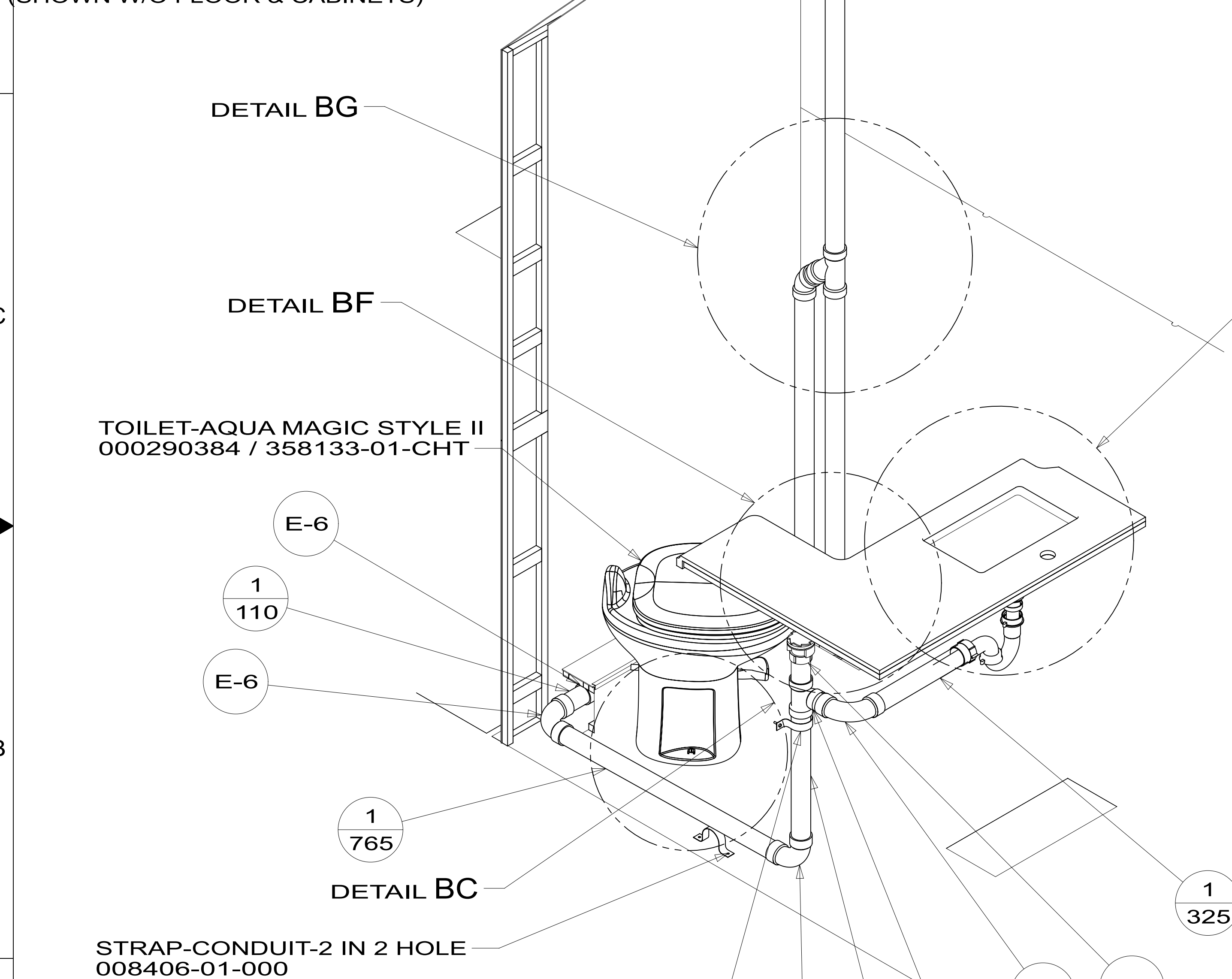
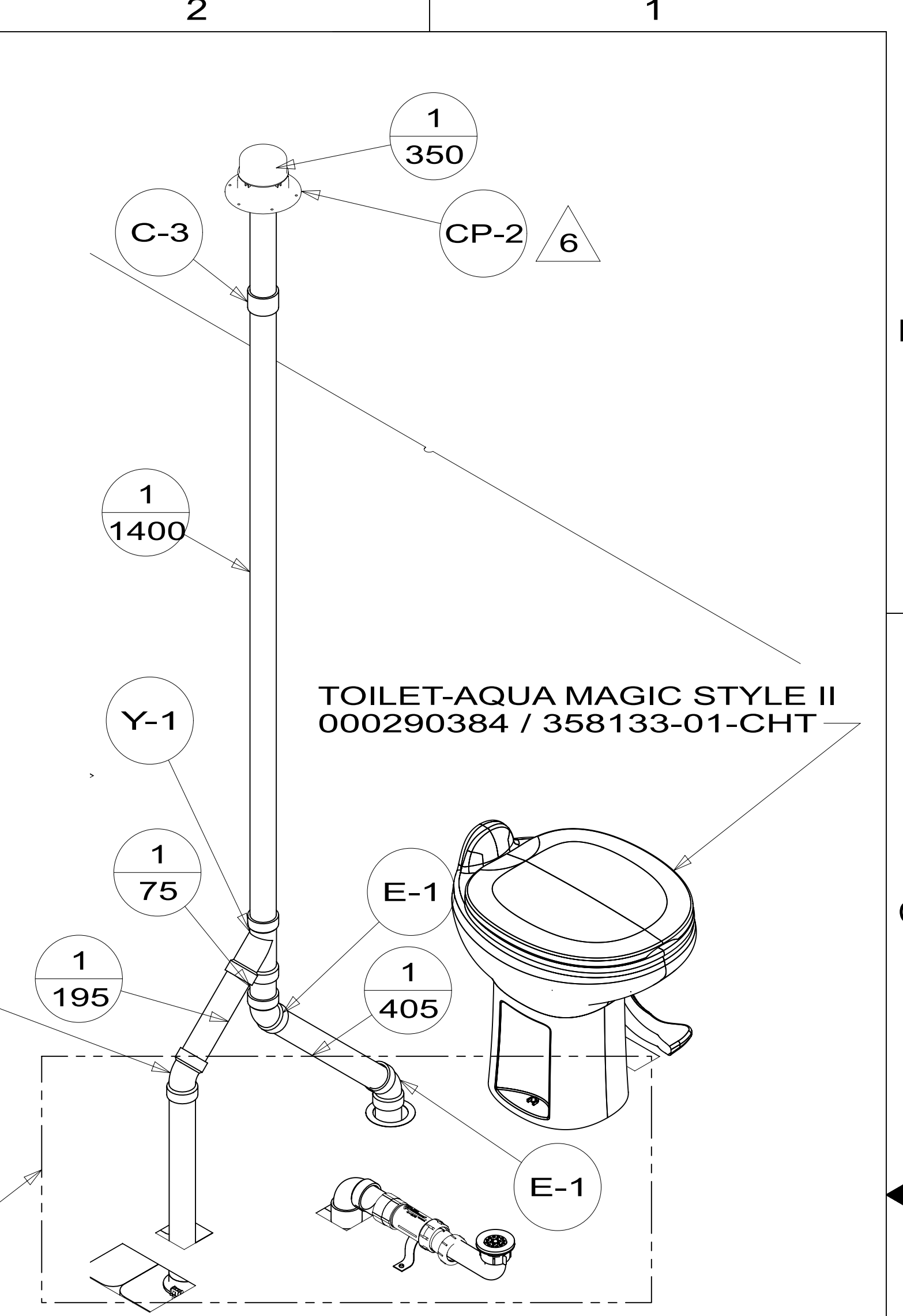
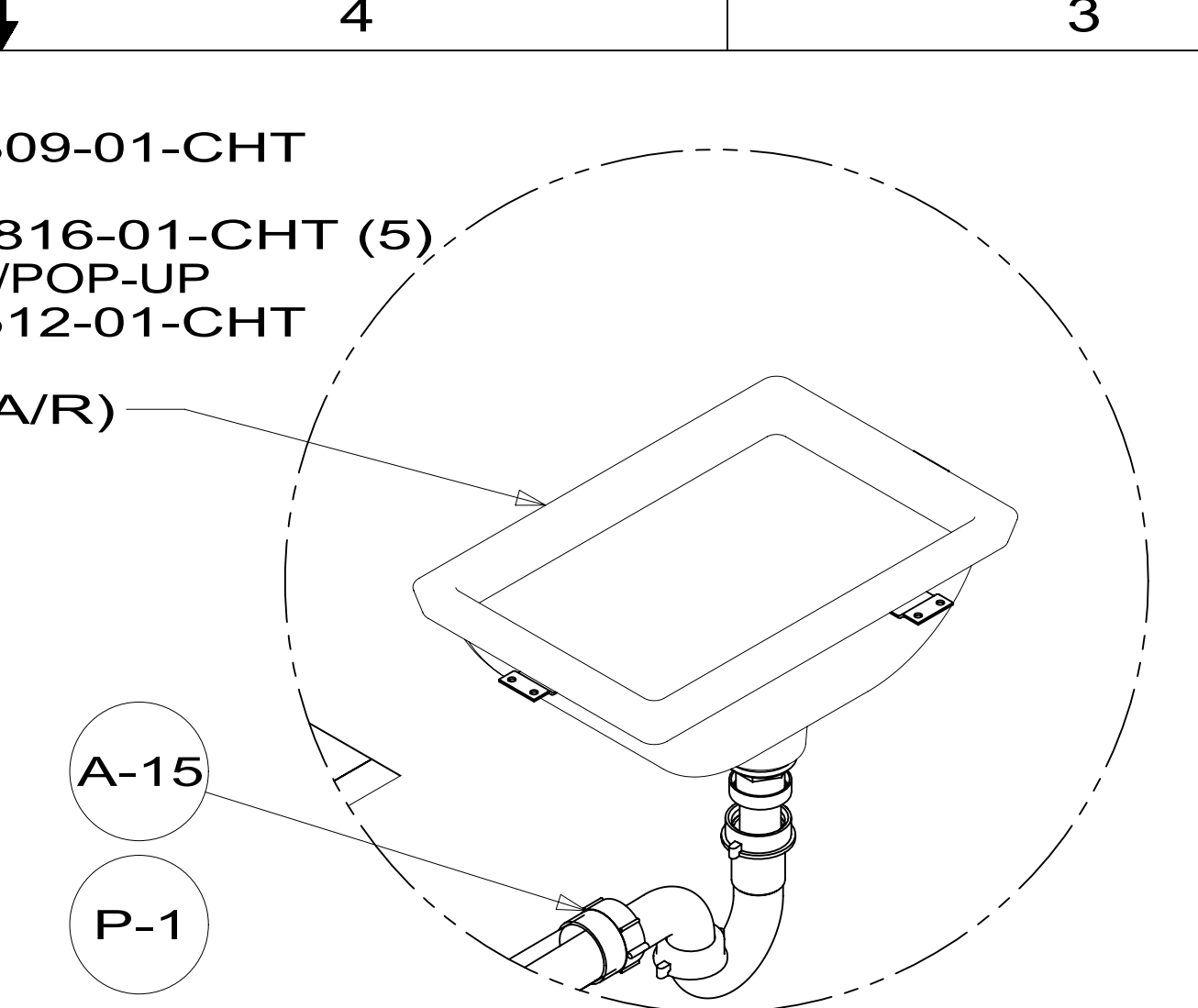
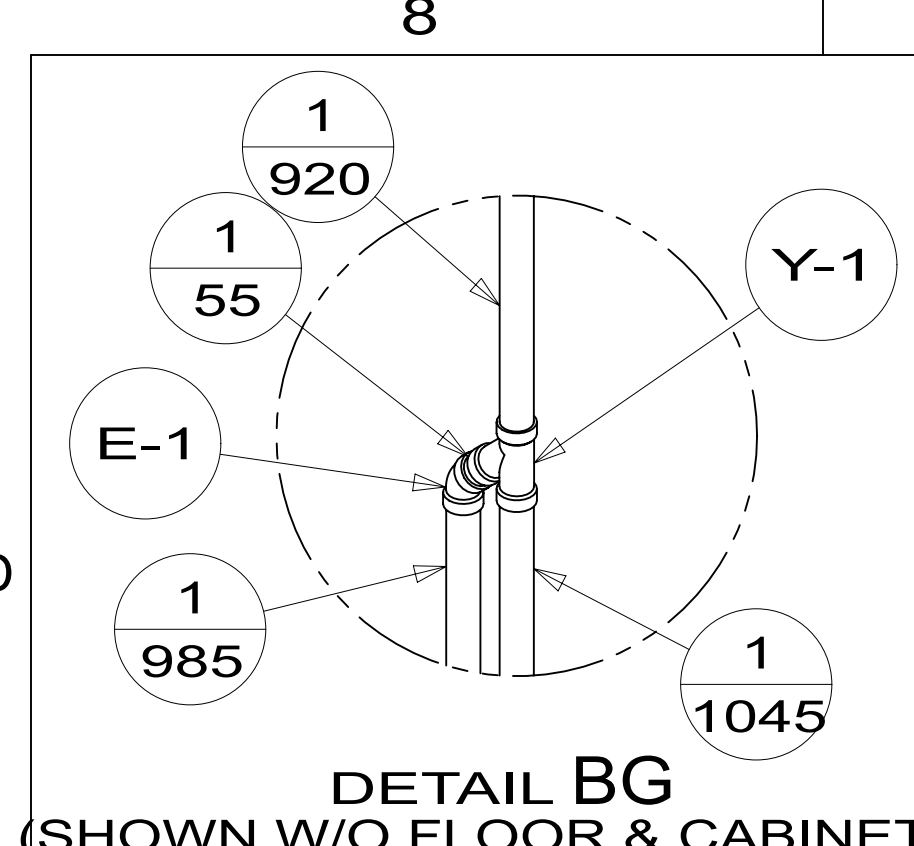
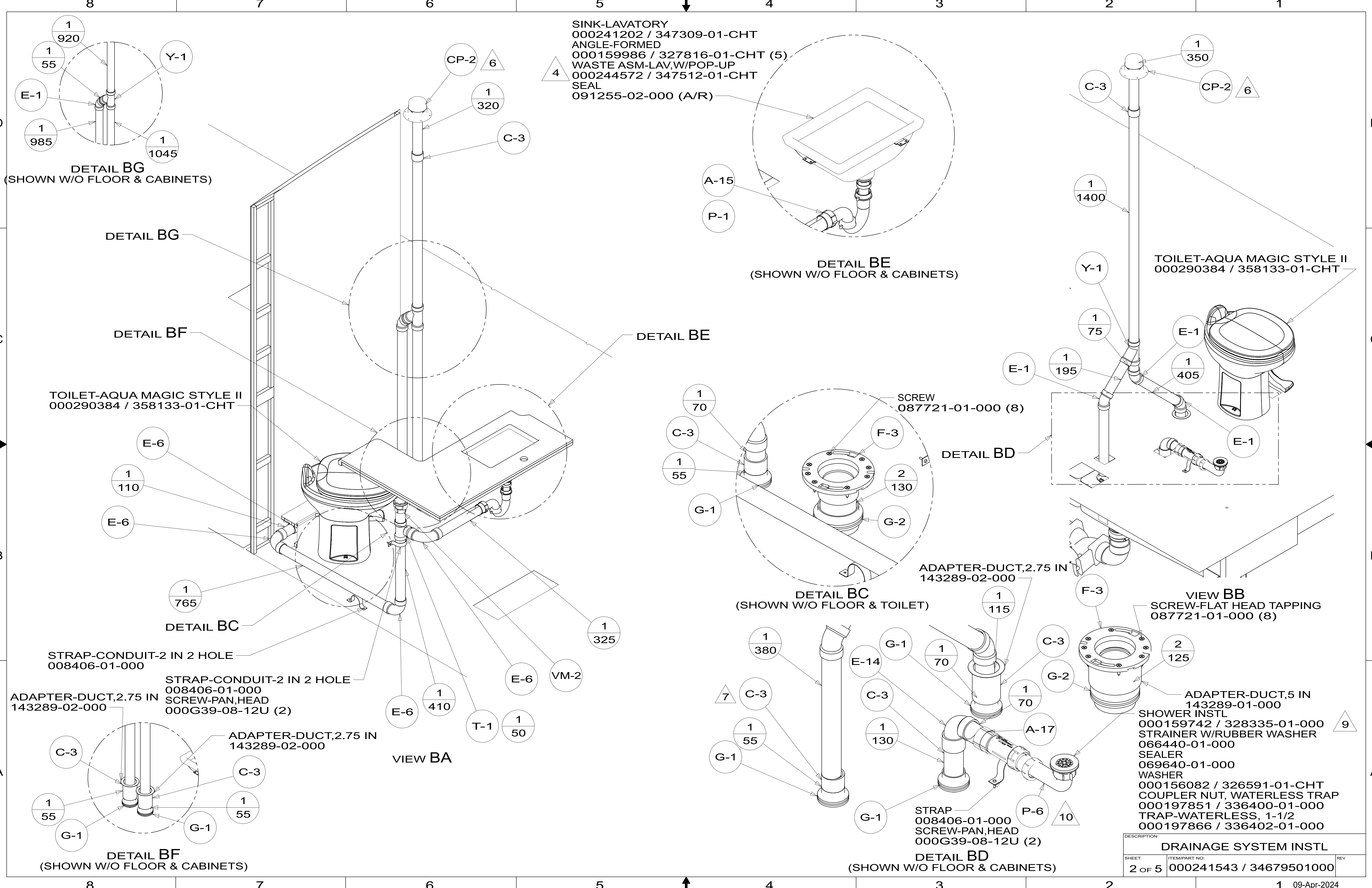
21M WASHER/DRYER PREP



DSNR:		ALL DIMENSIONS ARE IN MILLIMETERS	
DIFTR:		MATERIAL:	
UNSPECIFIED TOLERANCES:			
WHOLE DIM (X)	3		
ONE-PLACE (X.X)	1.5		
TWO-PLACE (X.XX)	0.50		
ANGLE	1°		
REFER TO ES0018 FOR FASTENER TIGHTENING GUIDELINES		WEIGHT: (LBS)	FIRST USED: (REF)
DESCRIPTION:		22 F36Z	
DRAINAGE SYSTEM INSTL			
SHEET:	ITEM/PART NO.:	REV	
1 OF 5	000241543 / 34679501000		

X-X

FOR DRAINAGE CALLOUTS SEE DWG NO. 000211962 / 303370-01-000



DESCRIPTION:		
DRAINAGE SYSTEM INSTL		
SHEET:	ITEM/PART NO.:	REV
2 OF 5	000241543 / 34679501000	

ELBOW-DRAIN, 1 1/2 LOW PROFIL
131486-01-000

SINK-GALLEY
000186043 / 334933-01-CHT
PREP KIT-GALLEY, SINK
000200645 / 334934-01-CHT
RACK-DRYING, ROLL UP
000214333 / 340698-01-CHT
ANGLE-FORMED
140002-01-CHT (12)
SEAL
091255-03-000
(21)

STRAP-CONDUIT-2 IN 2 HOLE
008406-01-000 (2)
SCREW-PAN, HEAD
000G39-08-12U (4)

STRAP-CONDUIT-2 IN 2 HOLE
008406-01-000 (2)
SCREW-PAN, HEAD
000G39-08-12U (4)

ELBOW-1 1/2, SOCKET X SLIP FIT
136111-01-000 (3)

DETAIL CD
(SHOWN W/O CABINETS & FLOOR)

DETAIL CC
(SHOWN W/O CABINETS)

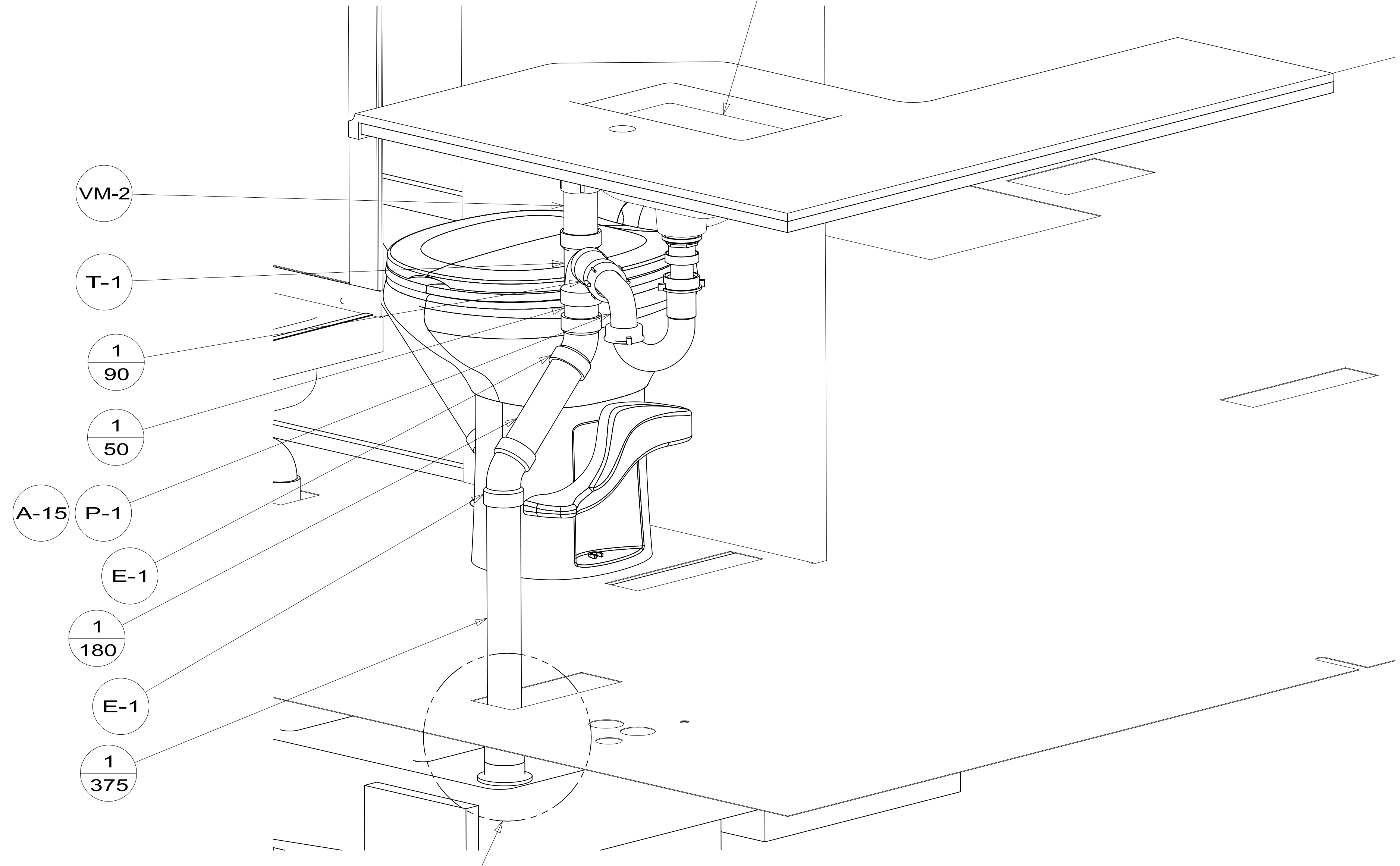
DETAIL CD

DETAIL CC

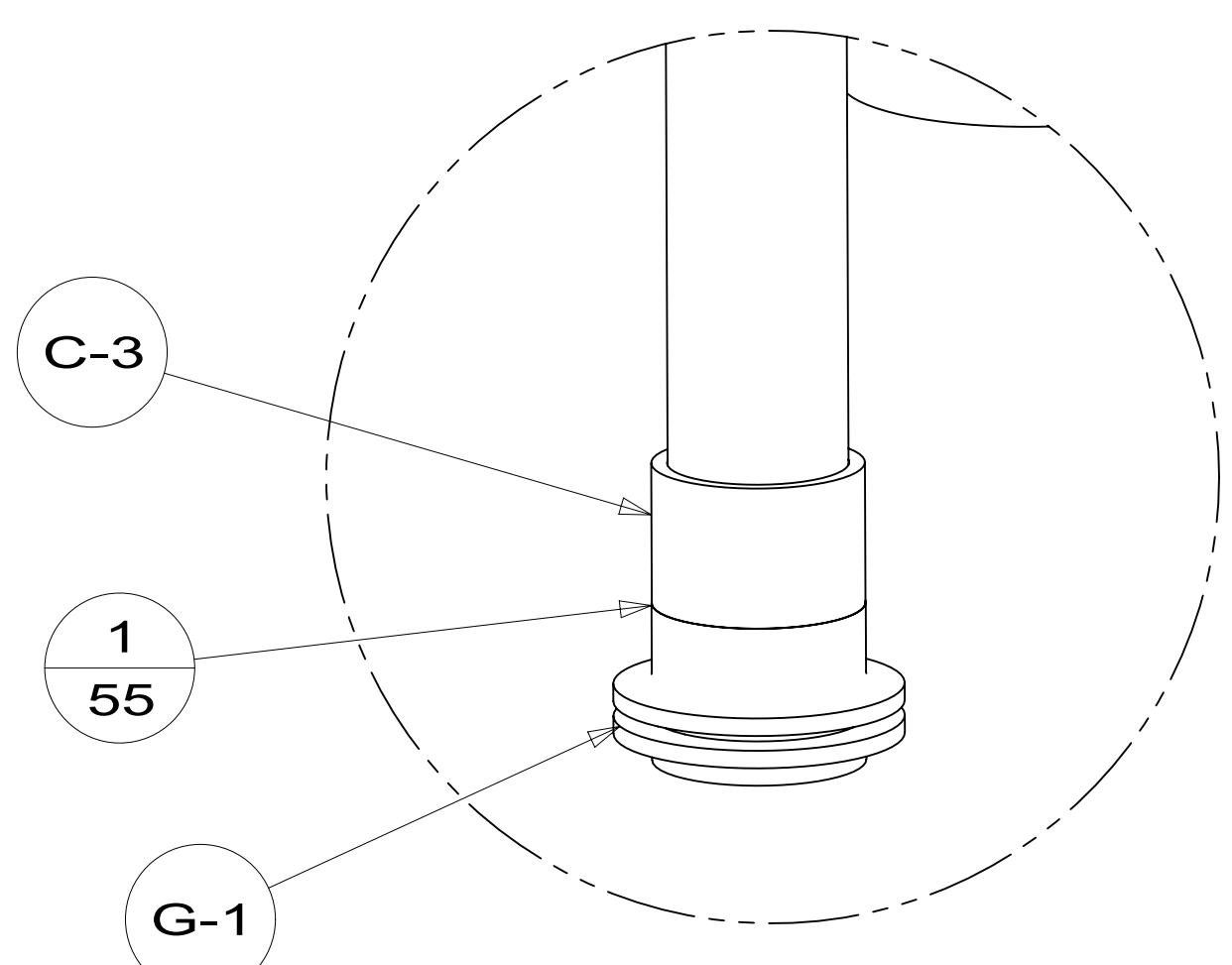
VIEW CA

DESCRIPTION: DRAINAGE SYSTEM INSTL		
SHEET: 3 OF 5	ITEM/PART NO: 000241543 / 34679501000	REV

SINK-LAVATORY
 000241202 / 347309-01-CHT
 ANGLE-FORMED
 000159986 / 327816-01-CHT (5)
 WASTE ASM-LAV,W/POP-UP
 000244572 / 347512-01-CHT
 SEAL
 091255-02-000 (A/R)

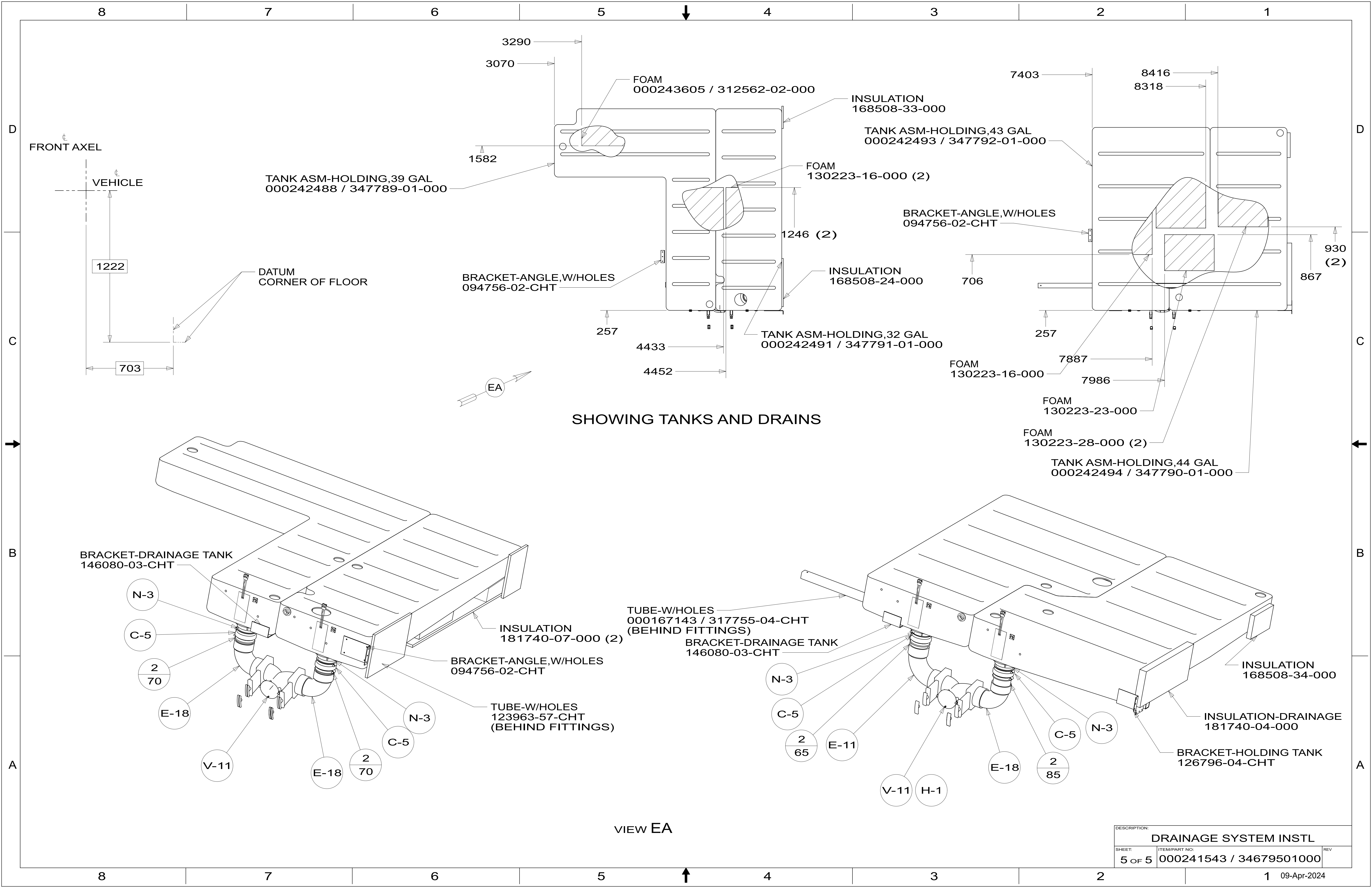


VIEW DA



DETAIL DB

DESCRIPTION: DRAINAGE SYSTEM INSTL		
SHEET: 4 OF 5	ITEM/PART NO: 000241543 / 34679501000	REV



DESCRIPTION:		
DRAINAGE SYSTEM INSTL		
SHEET:	ITEM/PART NO.:	REV
5 OF 5	000241543 / 34679501000	