

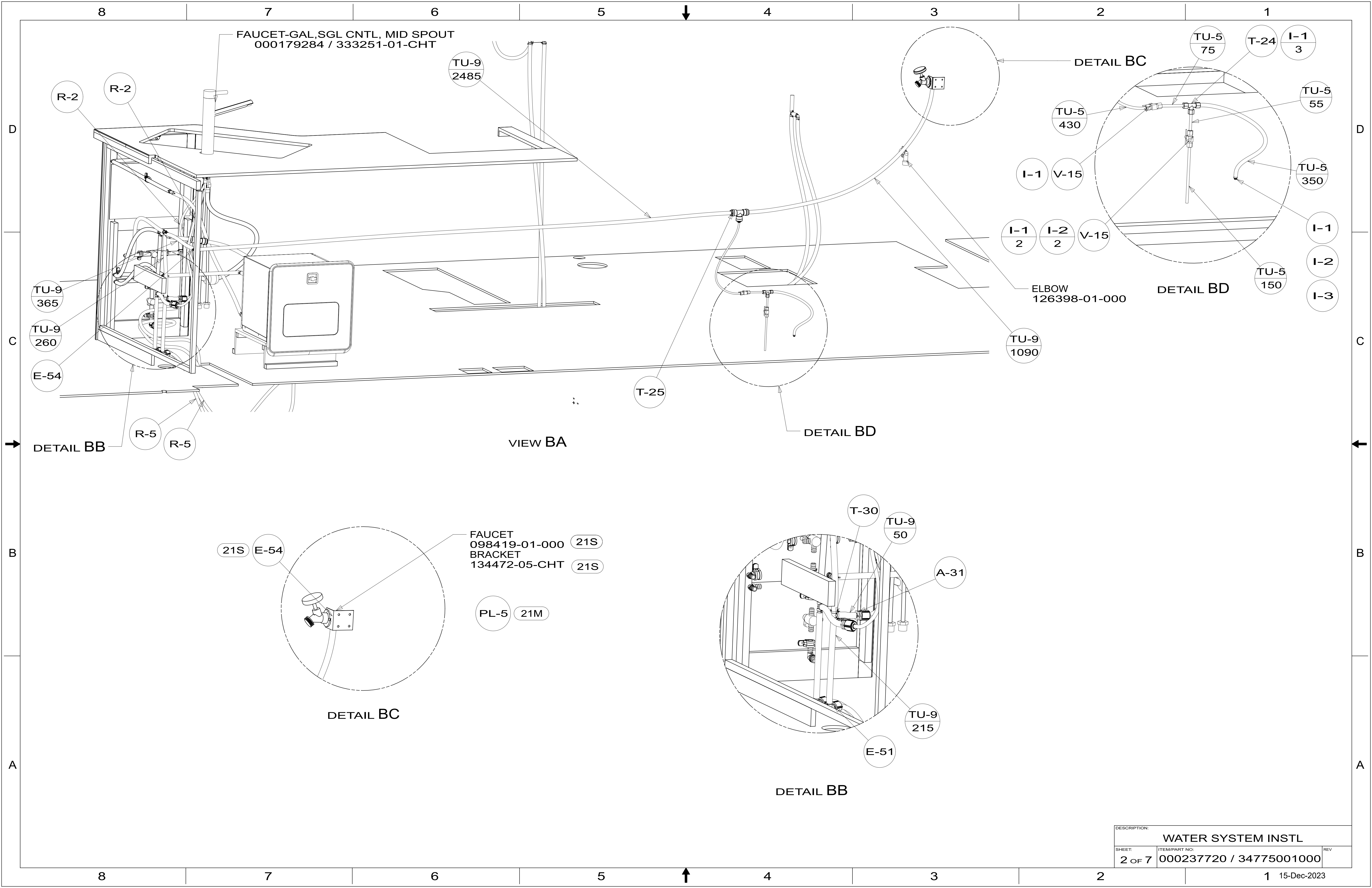
- 13 DO NOT USE SPACER SUPPLIED WITH DROP ELL.
- 12 FOR INSTALLATION USE SILICON-ADHESIVE 000162556 / 328744-02-CHT. APPLY ON TOP OF PLATE, PLACE COVER ON, AND PUT ADHESIVE AROUND COVER.
- 11 VALVE MUST REMAIN OPEN AFTER WATER TEST.
- 10 INSTALL FAUCET W/OUT BASEPLATE.
- 9 ELBOW TO BE TURN 45° BELOW HORIZONTAL LINE.
- 8. ALL CRIMP FITTINGS TO 1/2" PEX TUBING REQUIRE 1/2" CLAMP 000156249 / 326670-01-000.
- 7. ALL CRIMP FITTINGS TO 5/8" PEX TUBING REQUIRE 5/8" CLAMP 000156248 / 326669-01-000.
- 6 LABEL HOT AND COLD SUPPLY TUBES AND TAPE FITTING TO TUBE BEFORE CABINET SET TO PREVENT MOVEMENT.
- 5 ADD PIPE WRAP (LADDER SCRAP 110157-02-000) INSULATION.
- 4 ADD TEFLON TAPE 010405-02-000.
- 3. ALL TUBING TO BE SECURED AT 1200 INTERVALS MAXIMUM WITH CLAMP 010495-01-000 AND SCREW 000G67-10-12U OR EQUIVALENT.
- 2. TUBING TO BE INSTALLED WITH SUFFICIENT SLOPE TO PROVIDE DRAINAGE TO NEAREST VALVE.
- 1. PLASTIC FITTINGS TO BE SEALED WITH SEALANT 084456-01-000.

- 1BU WTR HTR TKLS W/RECIRCUL PUMP
- 21S WASHER & DRYER-PAIR
- 21M WASHER/DRYER PREP

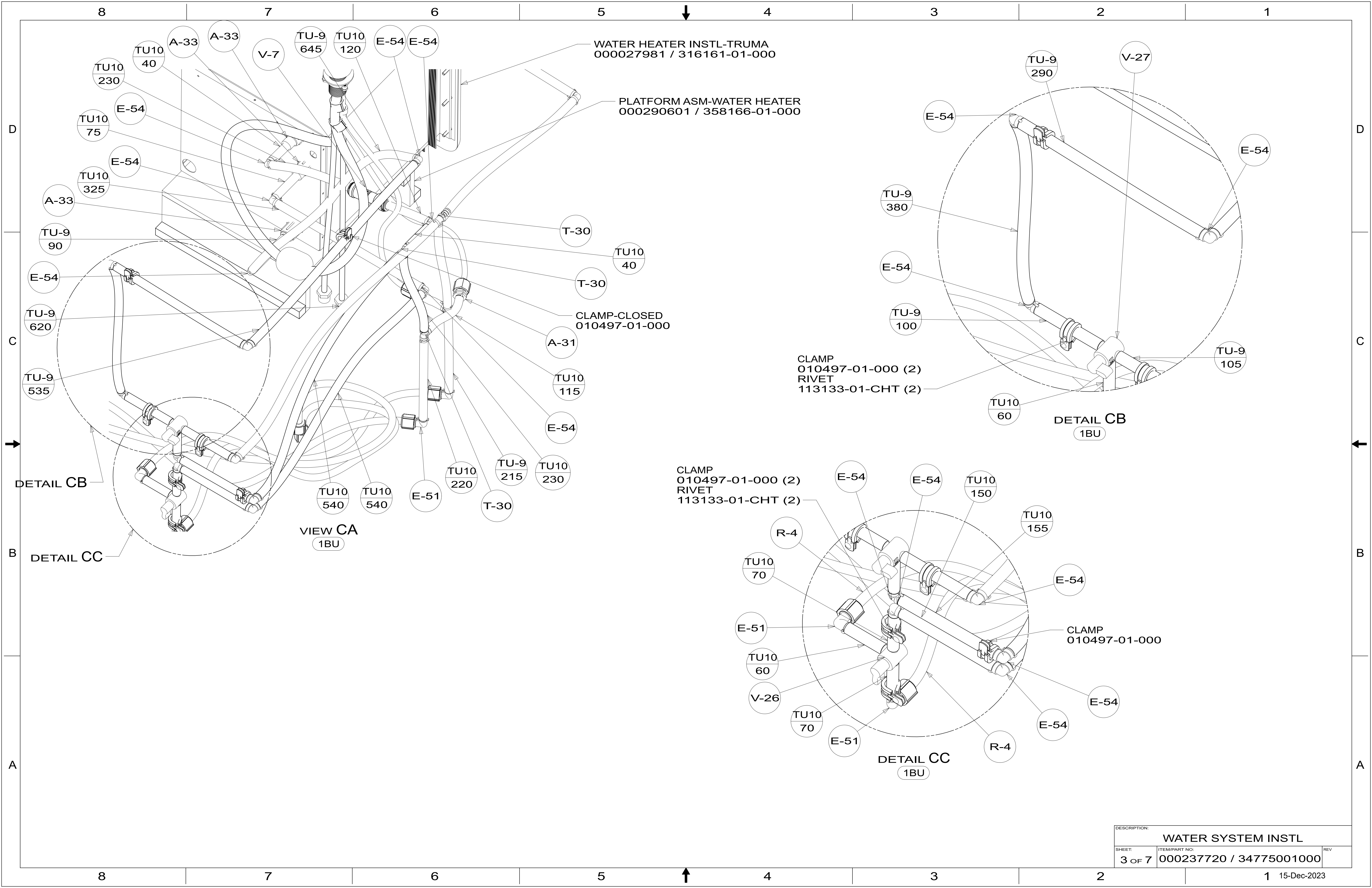
X-X  
FOR WATER CALLOUTS SEE DWG NO. 000209446 / 303369-01-000

**WINNEBAGO**<sup>®</sup>  
COPYRIGHT 2023 WINNEBAGO INDUSTRIES, INC.

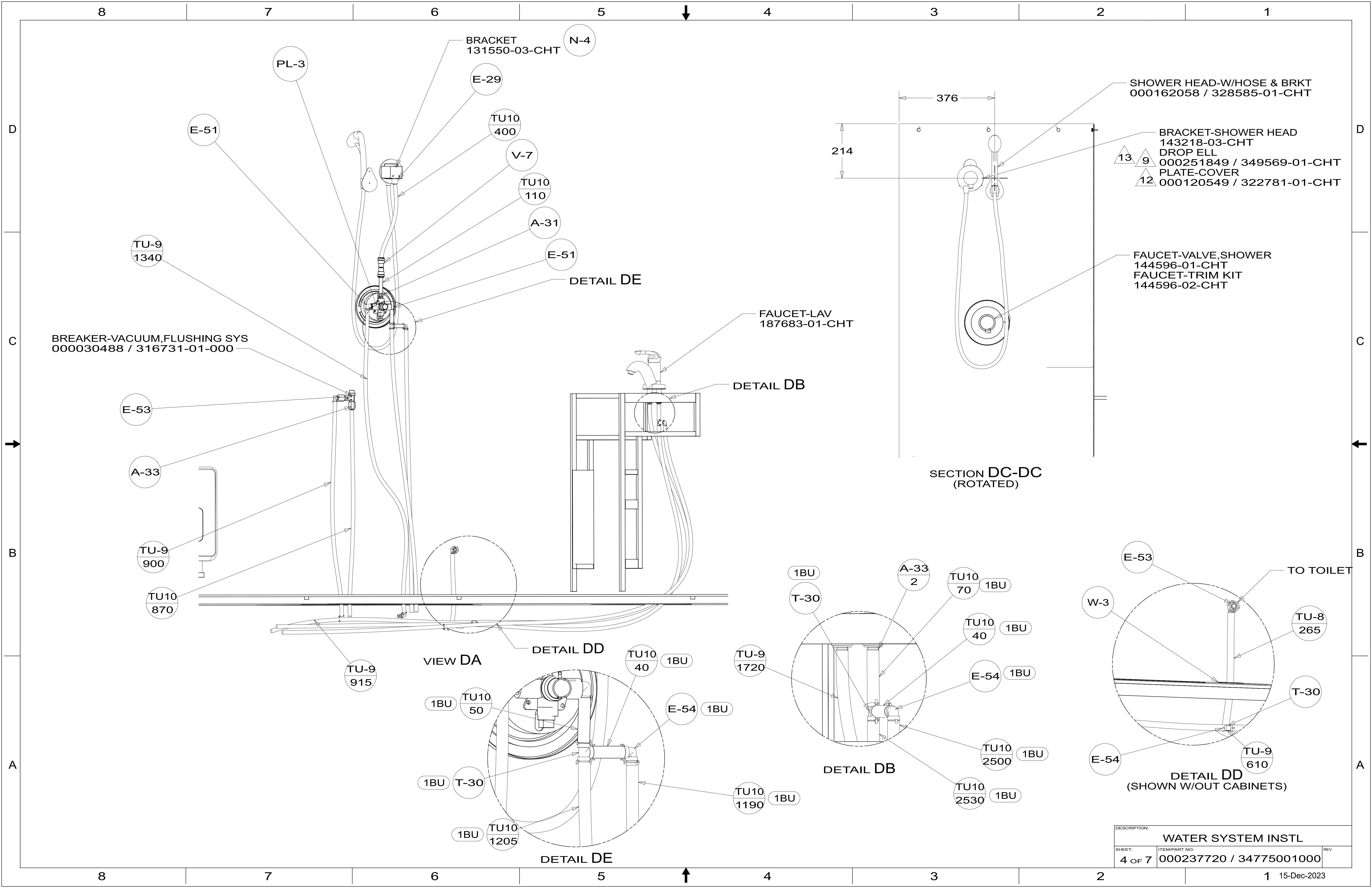
DSNR:		ALL DIMENSIONS ARE IN MILLIMETERS	
DFTR:			
UNSPECIFIED TOLERANCES:		MATERIAL:	
WHOLE DIM (X)	: 3		
ONE-PLACE (X.X)	: 1.5		
TWO-PLACE (X.XX)	: 0.50		
ANGLE	: 1°		
REFER TO ES0018 FOR FASTENER TIGHTENING GUIDELINES		WEIGHT: (LBS)	FIRST USED: (REF)
			22 L36H
DESCRIPTION: WATER SYSTEM INSTL			
SHEET:	ITEM/PART NO.:	REV	
1 OF 7	000237720 / 34775001000		



DESCRIPTION:		
WATER SYSTEM INSTL		
SHEET:	ITEM/PART NO.:	REV
2 OF 7	000237720 / 34775001000	



DESCRIPTION:		
WATER SYSTEM INSTL		
SHEET:	ITEM/PART NO:	REV
3 OF 7	000237720 / 34775001000	



BREAKER-VACUUM, FLUSHING SYS  
000030488 / 316731-01-000

BRACKET  
131550-03-CHT

SHOWER HEAD-W/HOSE & BRKT  
000162058 / 328585-01-CHT

BRACKET-SHOWER HEAD  
143218-03-CHT  
DROP ELL  
000251849 / 349569-01-CHT  
PLATE-COVER  
000120549 / 322781-01-CHT

FAUCET-VALVE, SHOWER  
144596-01-CHT  
FAUCET-TRIM KIT  
144596-02-CHT

FAUCET-LAV  
187683-01-CHT

SECTION DC-DC  
(ROTATED)

VIEW DA

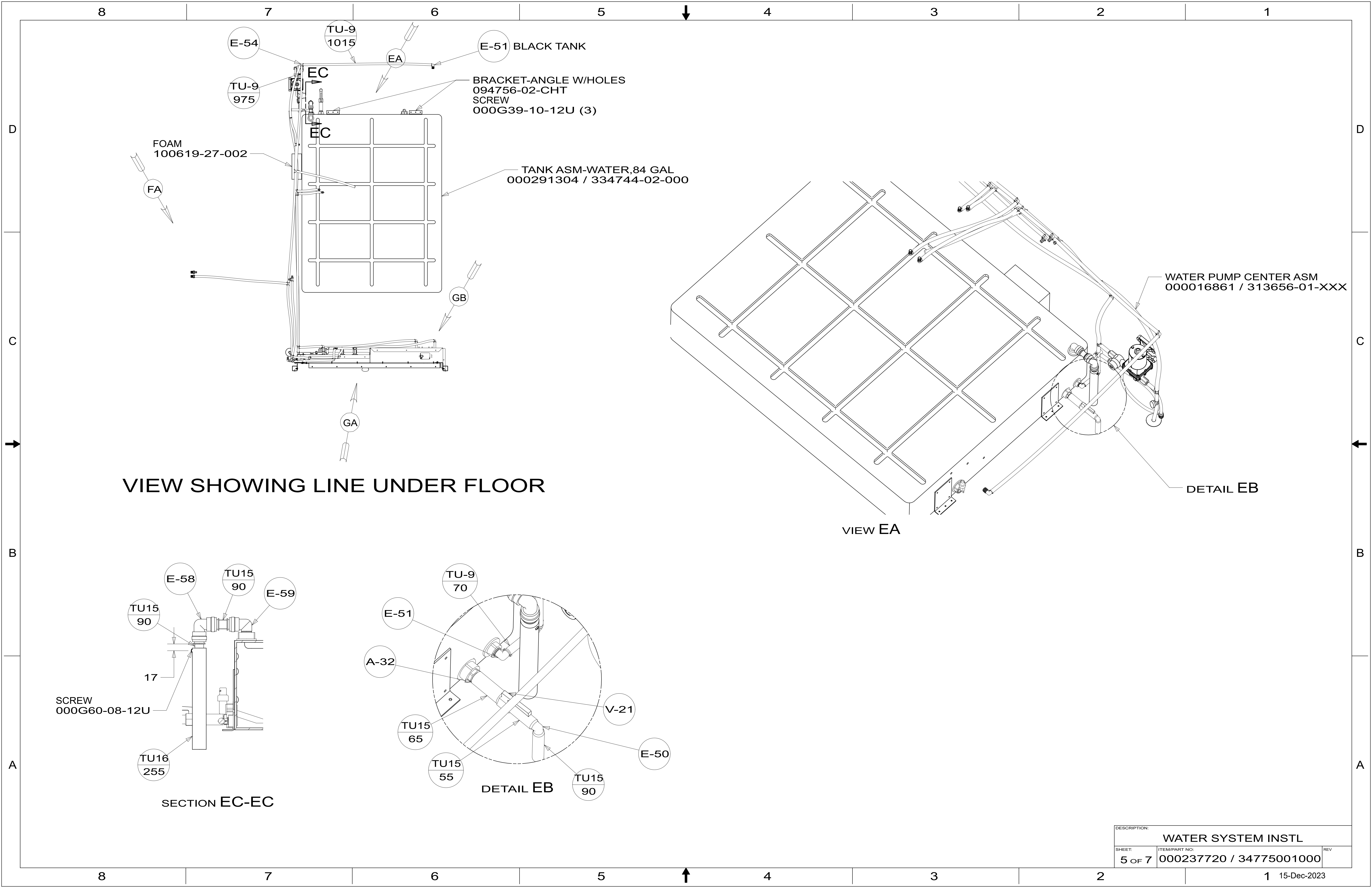
DETAIL DD

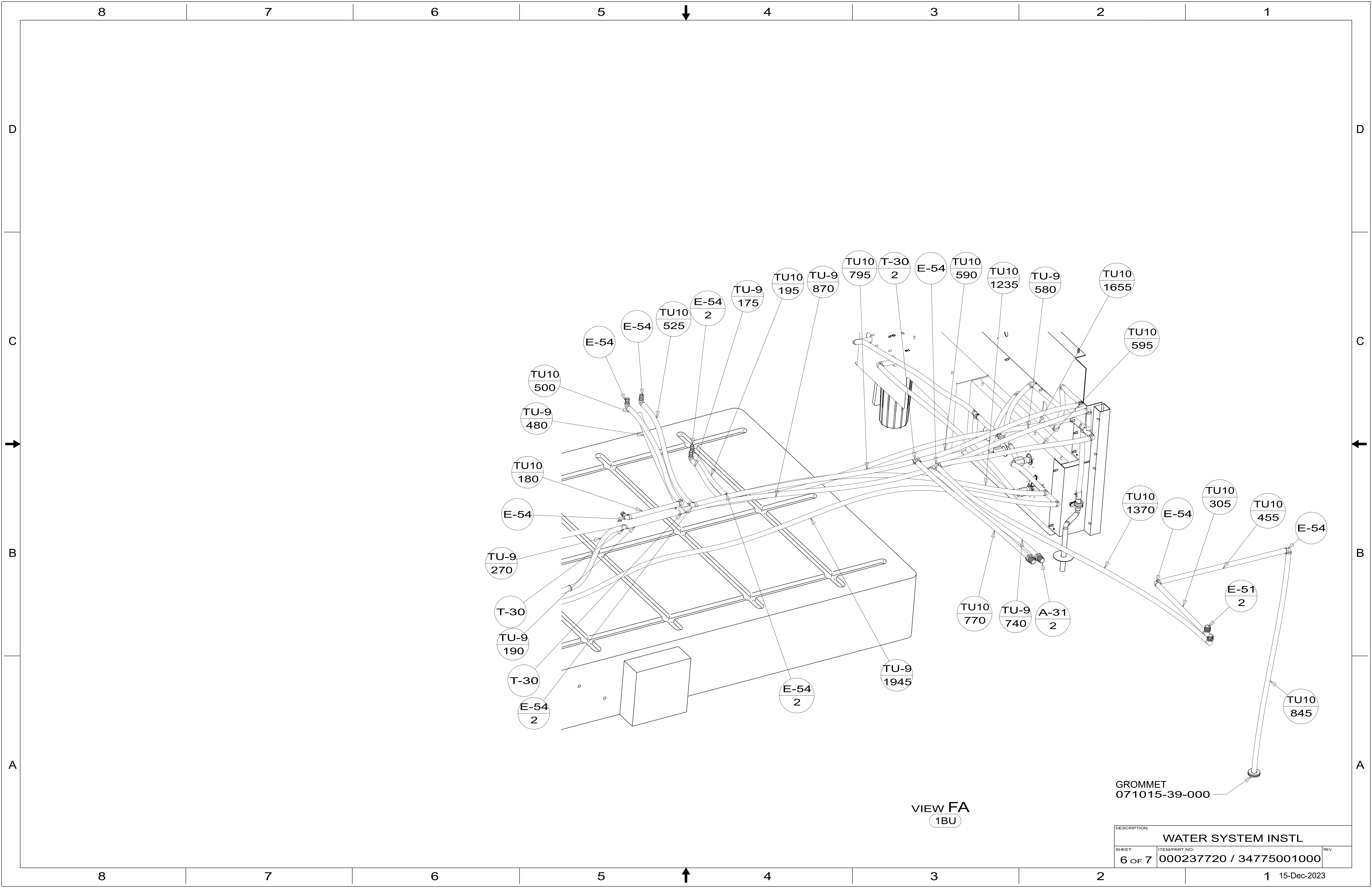
DETAIL DB

DETAIL DD  
(SHOWN W/OUT CABINETS)

DETAIL DE

DESCRIPTION: <b>WATER SYSTEM INSTL</b>		
SHEET: 4 OF 7	ITEM/PART NO: 000237720 / 34775001000	REV

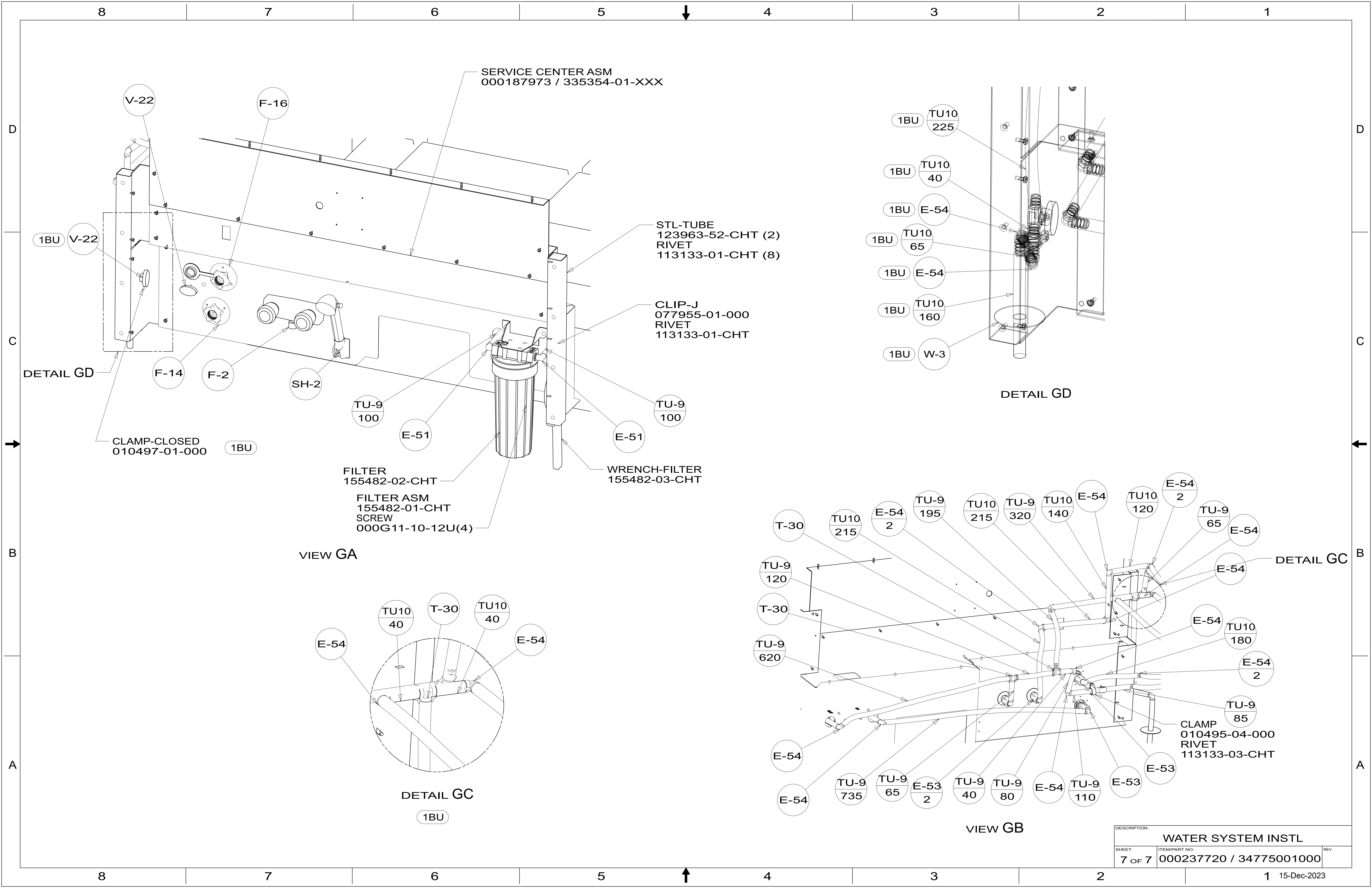




VIEW FA  
1BU

GROMMET  
071015-39-000

DESCRIPTION:		
WATER SYSTEM INSTL		
SHEET:	ITEM/PART NO.:	REV
6 OF 7	000237720 / 34775001000	



SERVICE CENTER ASM  
000187973 / 335354-01-XXX

STL-TUBE  
123963-52-CHT (2)  
RIVET  
113133-01-CHT (8)

CLIP-J  
077955-01-000  
RIVET  
113133-01-CHT

FILTER  
155482-02-CHT  
FILTER ASM  
155482-01-CHT  
SCREW  
000G11-10-12U(4)

WRENCH-FILTER  
155482-03-CHT

VIEW GA

DETAIL GD

DETAIL GC

VIEW GB

DETAIL GC

DESCRIPTION:		
WATER SYSTEM INSTL		
SHEET: 7 OF 7	ITEM/PART NO: 000237720 / 34775001000	REV