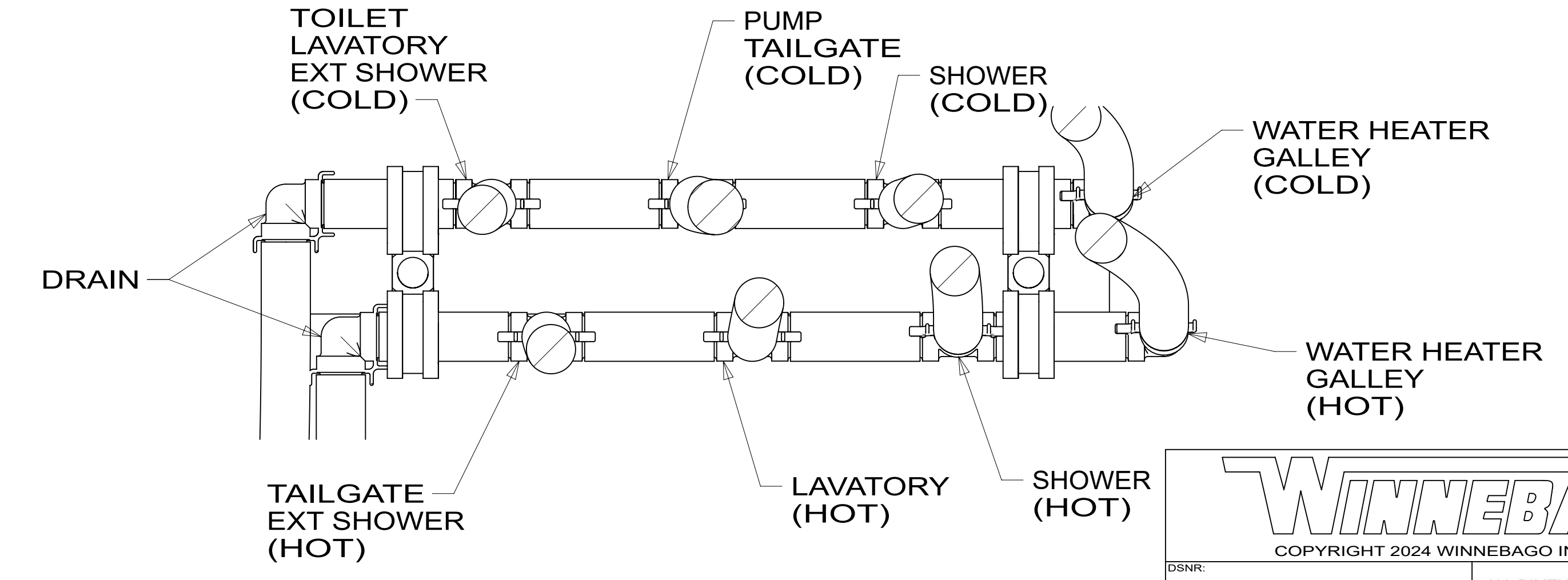
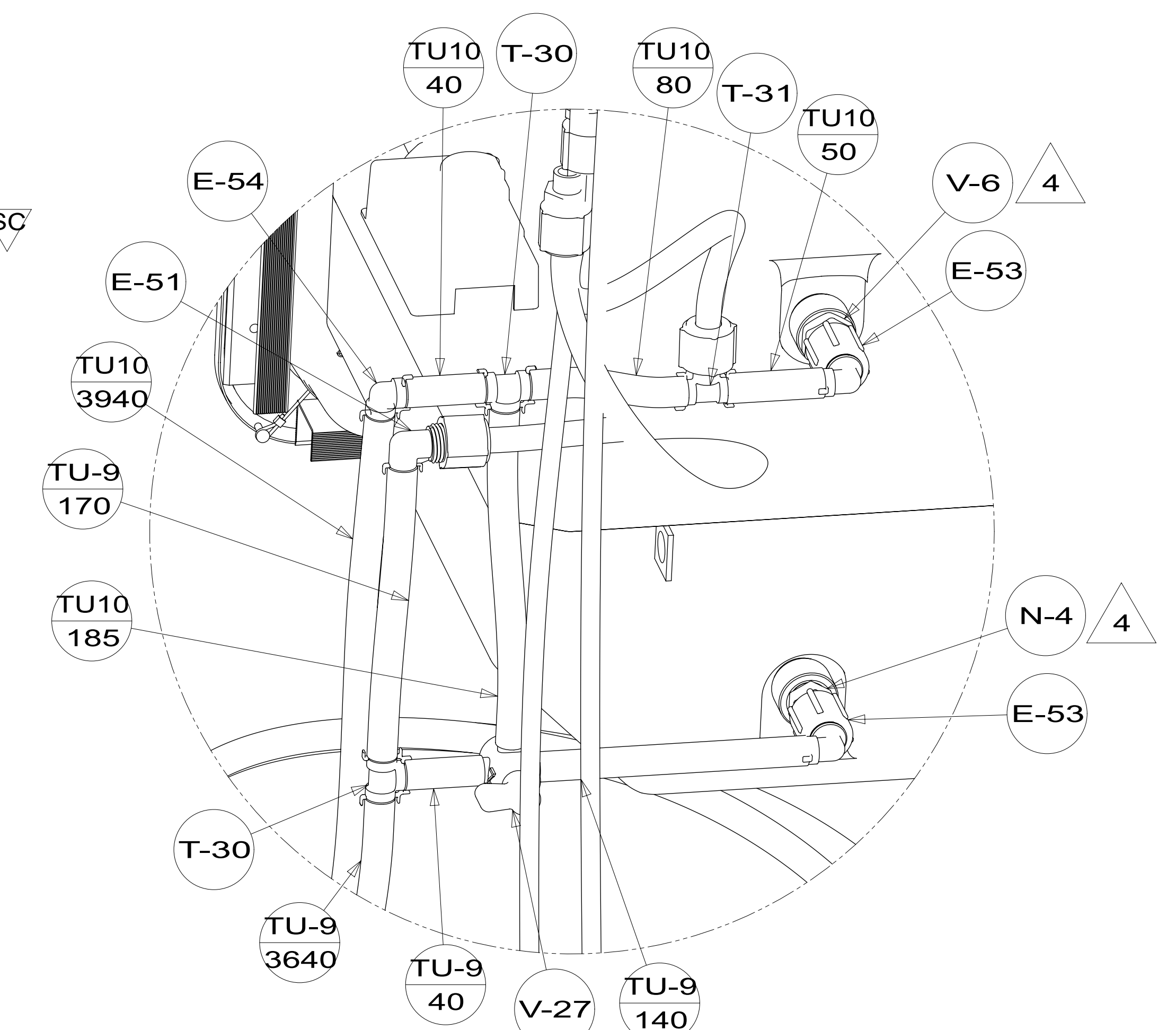
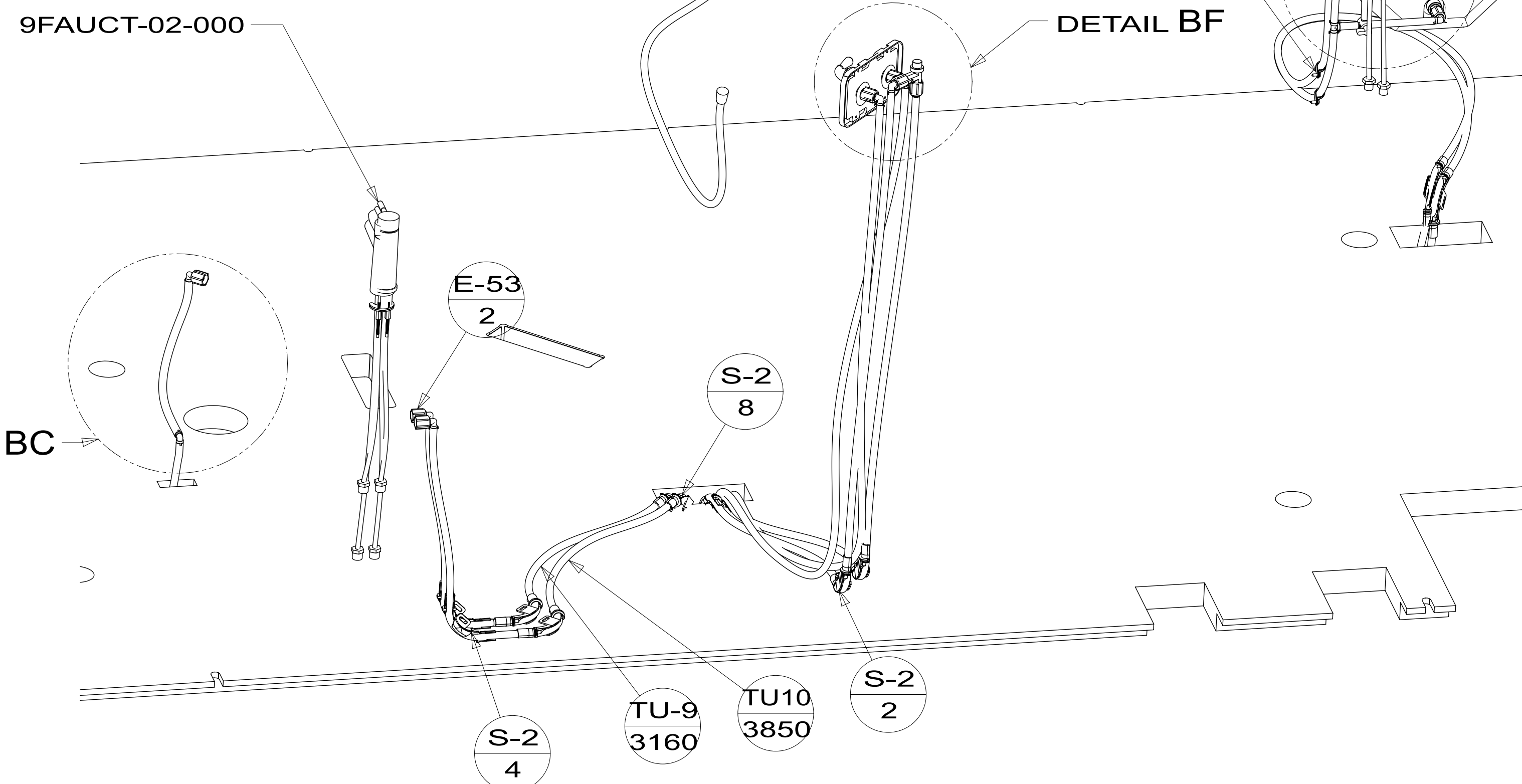
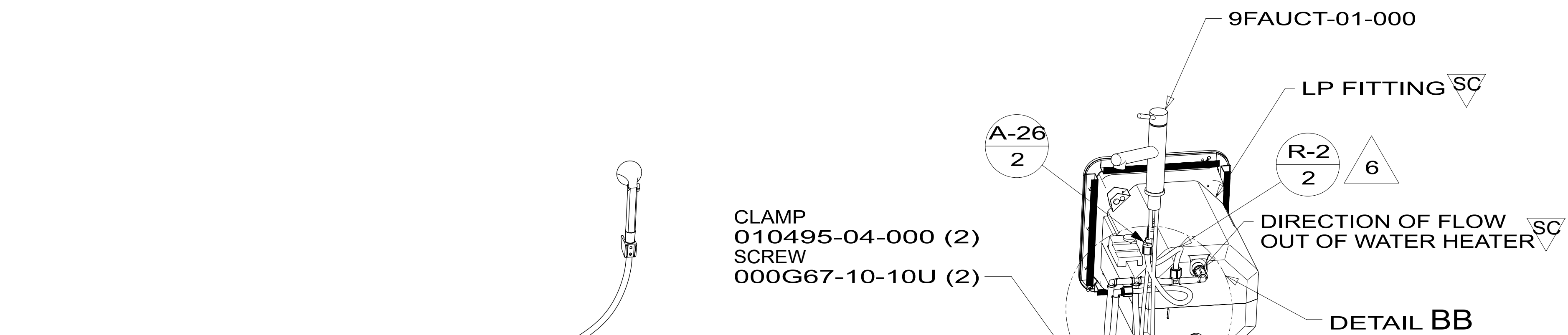
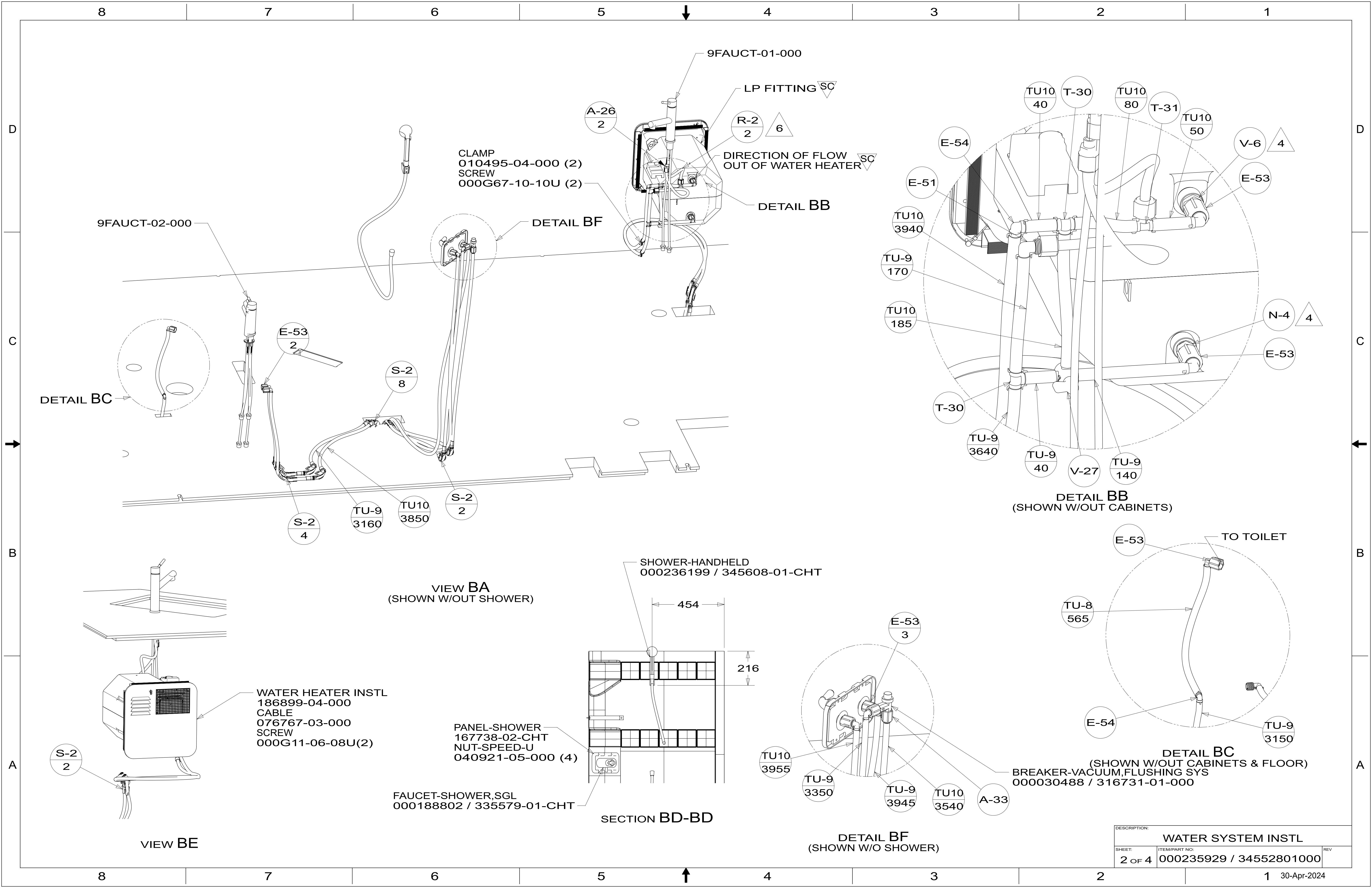


- NOTES:
1. PLASTIC FITTINGS TO BE SEALED WITH SEALANT 084456-01-000.
 2. TUBING TO BE INSTALLED WITH SUFFICIENT SLOPE TO PROVIDE DRAINAGE TO NEAREST VALVE.
 3. ALL TUBING TO BE SECURED AT 1200 INTERVALS MAXIMUM WITH CLAMP 010495-01-000 AND SCREW 000G67-10-12U OR EQUIVALENT.
 4. ADD TEFLON TAPE 010405-02-000.
 5. ADD PIPE WRAP (LADDER SCRAP 110157-02-000) INSULATION.
 6. LABEL HOT AND COLD SUPPLY TUBES AND TAPE FITTING TO TUBE BEFORE CABINET SET TO PREVENT MOVEMENT.
 7. ALL CRIMP FITTINGS TO 5/8" FLEX TUBING REQUIRE 5/8" CLAMP 000156248 / 326669-01-000.
 8. ALL CRIMP FITTINGS TO 1/2" PEX TUBING REQUIRE 1/2" CLAMP 000156249 / 326670-01-000.
 9. ALL CRIMP FITTINGS TO 3/4" PEX TUBING REQUIRE 3/4" CLAMP 000156247 / 326668-01-000.
 10. USE WITH FAUCET 000221451 / 342498-01-CHT AND 000282964 / 356515-01-CHT.

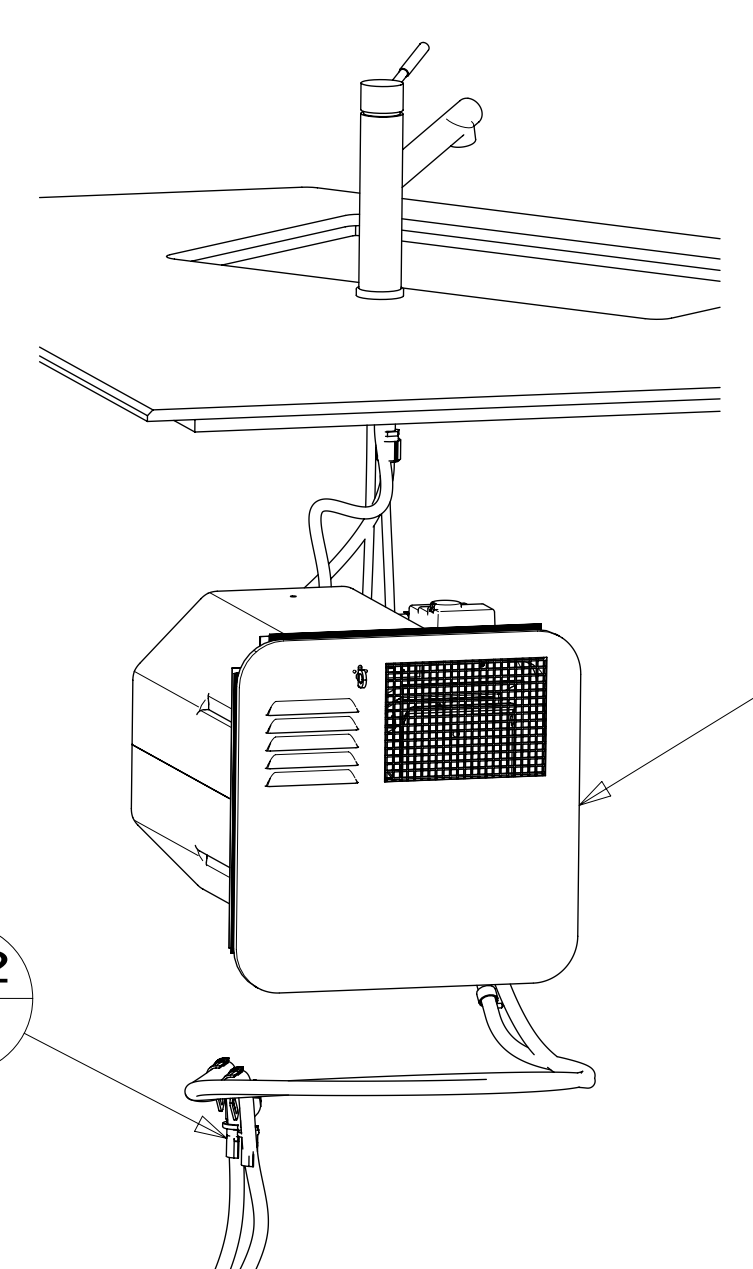


- CC** INDICATES A CRITICAL CHARACTERISTIC. ENSURE PROPER PROCEDURES ARE FOLLOWED.
- SC** INDICATES A SIGNIFICANT CHARACTERISTIC. ENSURE PROPER PROCEDURES ARE FOLLOWED.
- KC** INDICATES A KEY CHARACTERISTIC. ENSURE PROPER PROCEDURES ARE FOLLOWED.

WINNEBAGO [®]		COPYRIGHT 2024 WINNEBAGO INDUSTRIES, INC.	
DSNR:	ALL DIMENSIONS ARE IN MILLIMETERS		
DFTR:			
UNSPECIFIED TOLERANCES:	MATERIAL:		
WHOLE DIM (X) :	3		
ONE-PLACE (X.X) :	1.5		
TWO-PLACE (X.XX) :	0.50		
ANGLE :	1°		
REFER TO ES0018 FOR FASTENER TIGHTENING GUIDELINES	WEIGHT: (LBS)	FIRST USED: (REF)	
		22 E31B	
DESCRIPTION:			
WATER SYSTEM INSTL			
SHEET:	ITEM/PART NO.:	REV:	
1 OF 4	000235929 / 34552801000		
REF: 1 30-Apr-2024			



DETAIL BB
 (SHOWN W/OUT CABINETS)

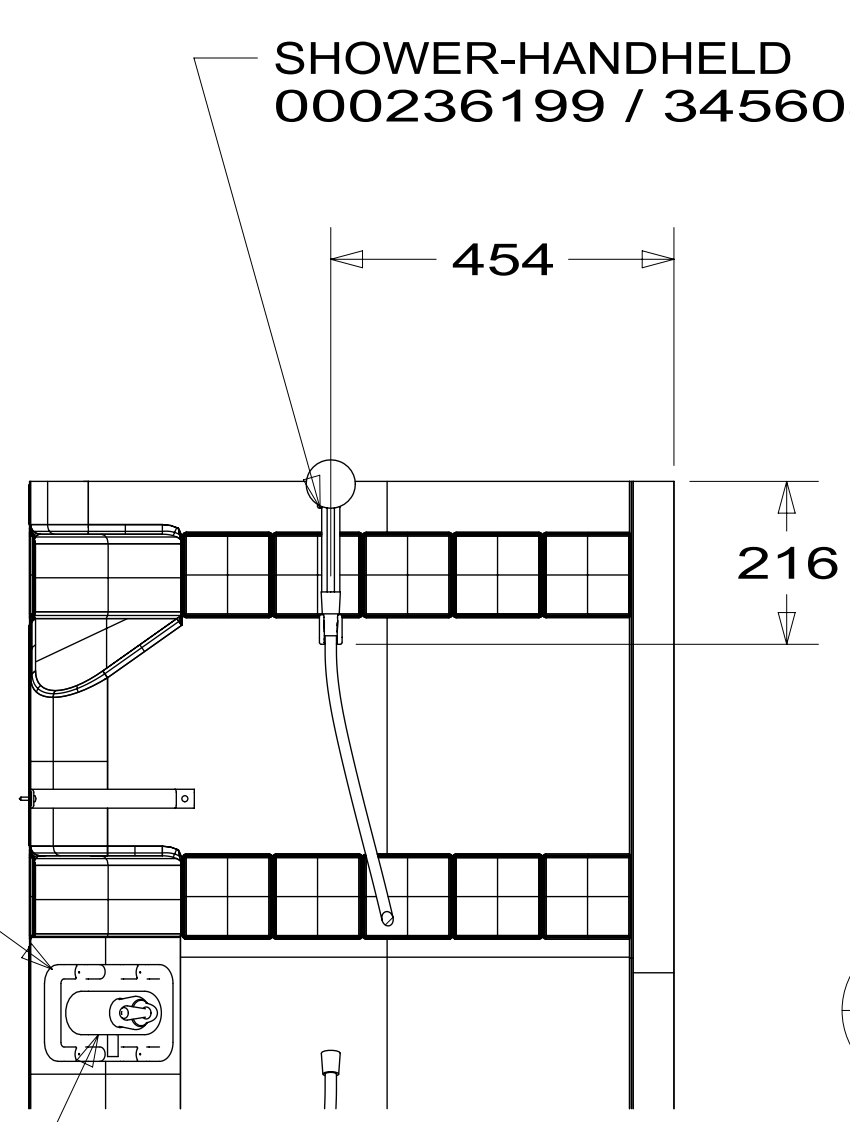


WATER HEATER INSTL
 186899-04-000
 CABLE 076767-03-000
 SCREW 000G11-06-08U(2)

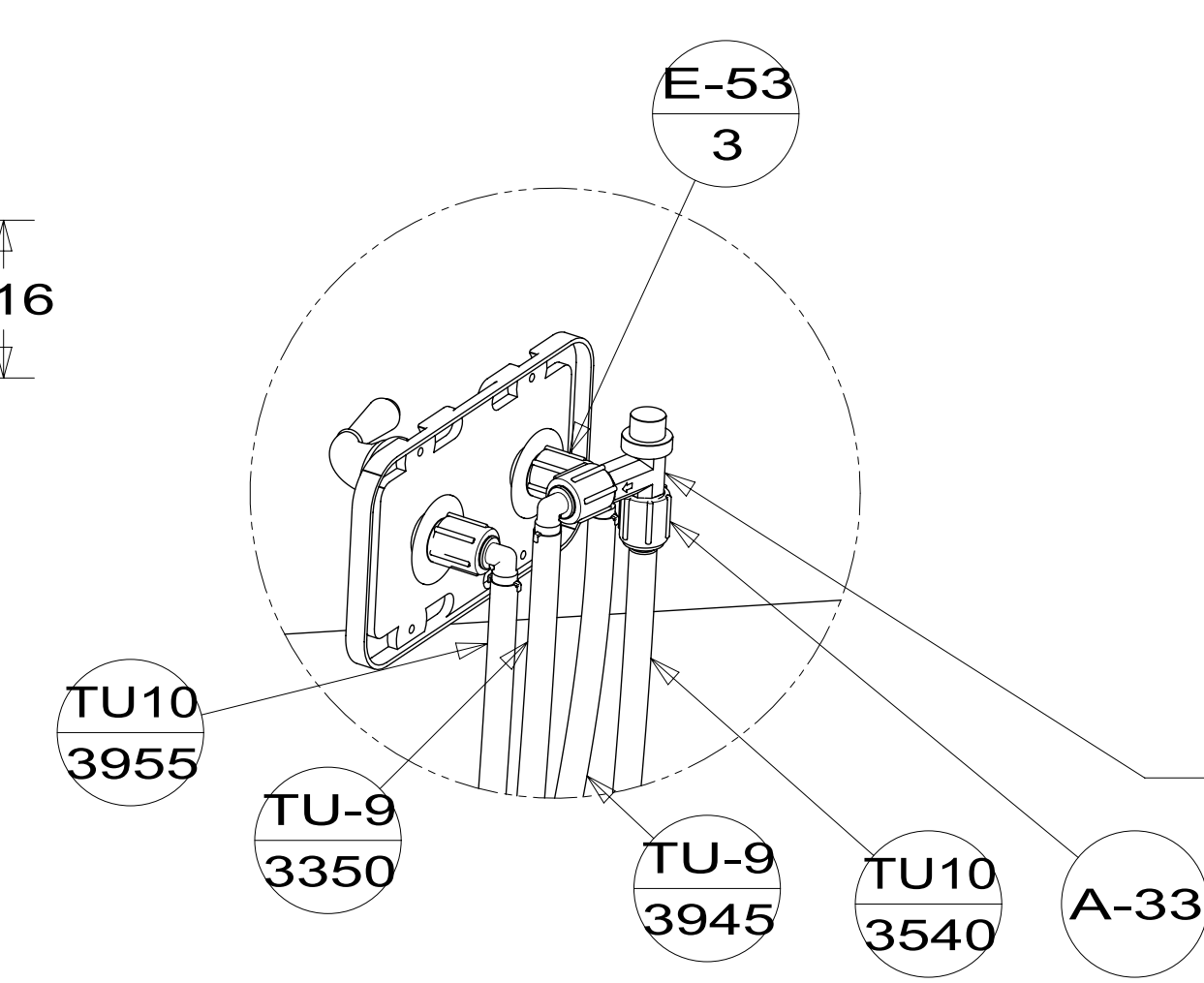
VIEW BA
 (SHOWN W/OUT SHOWER)

PANEL-SHOWER
 167738-02-CHT
 NUT-SPEED-U 040921-05-000 (4)

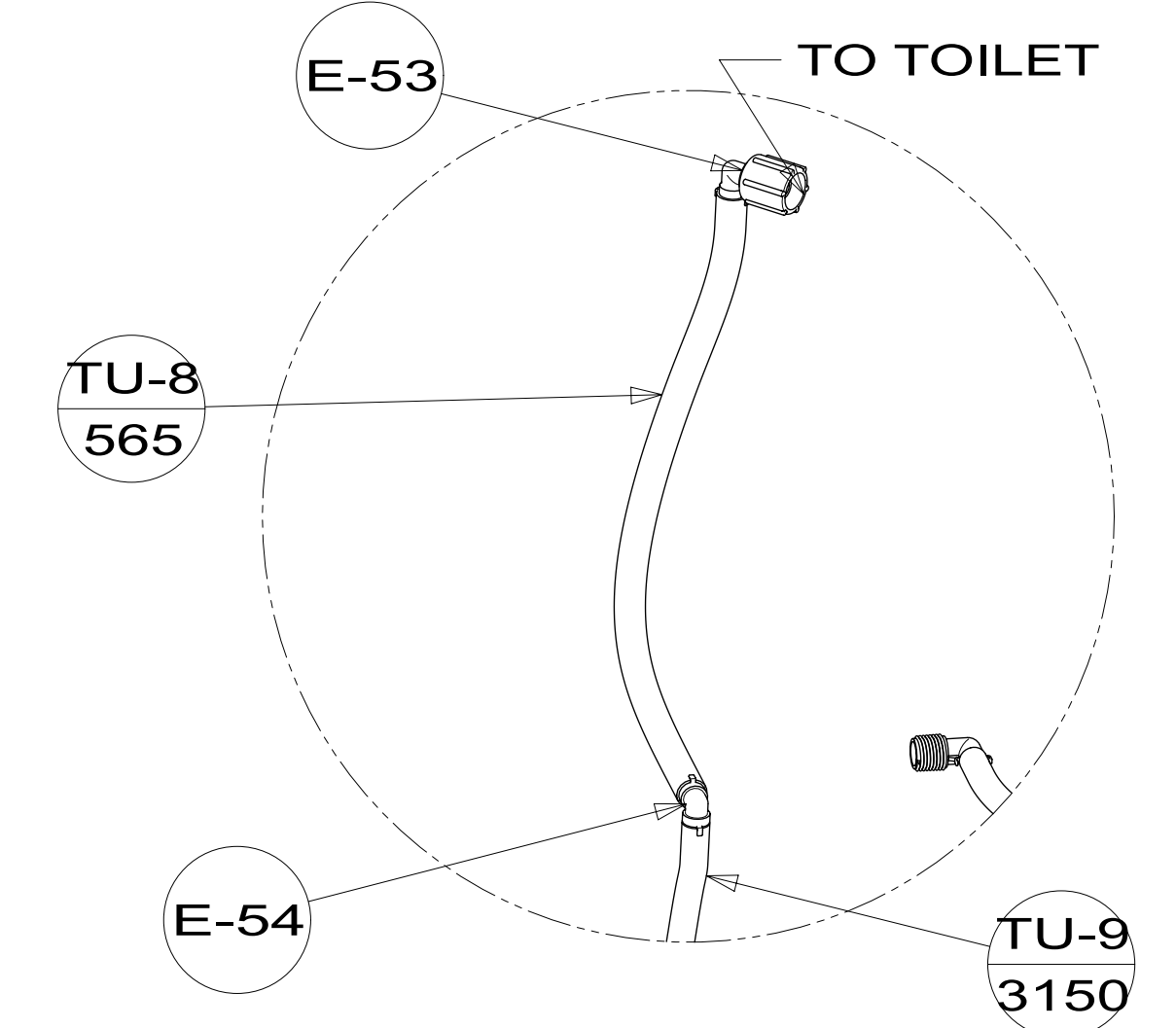
FAUCET-SHOWER, SGL
 000188802 / 335579-01-CHT



SECTION BD-BD



DETAIL BF
 (SHOWN W/O SHOWER)

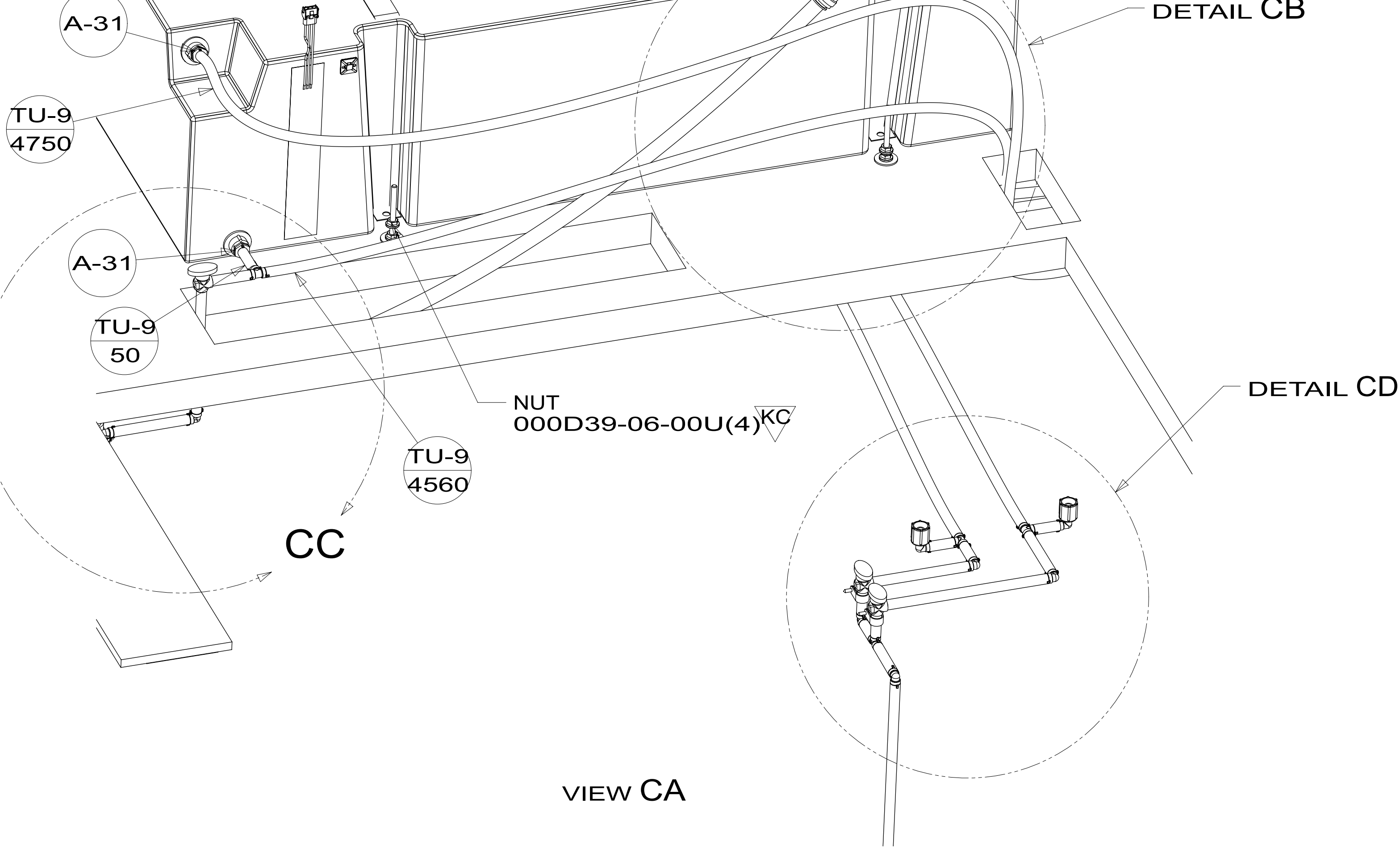


DETAIL BC
 (SHOWN W/OUT CABINETS & FLOOR)
 BREAKER-VACUUM, FLUSHING SYS
 000030488 / 316731-01-000

DESCRIPTION:		
WATER SYSTEM INSTL		
SHEET:	ITEM/PART NO.:	REV
2 OF 4	000235929 / 34552801000	

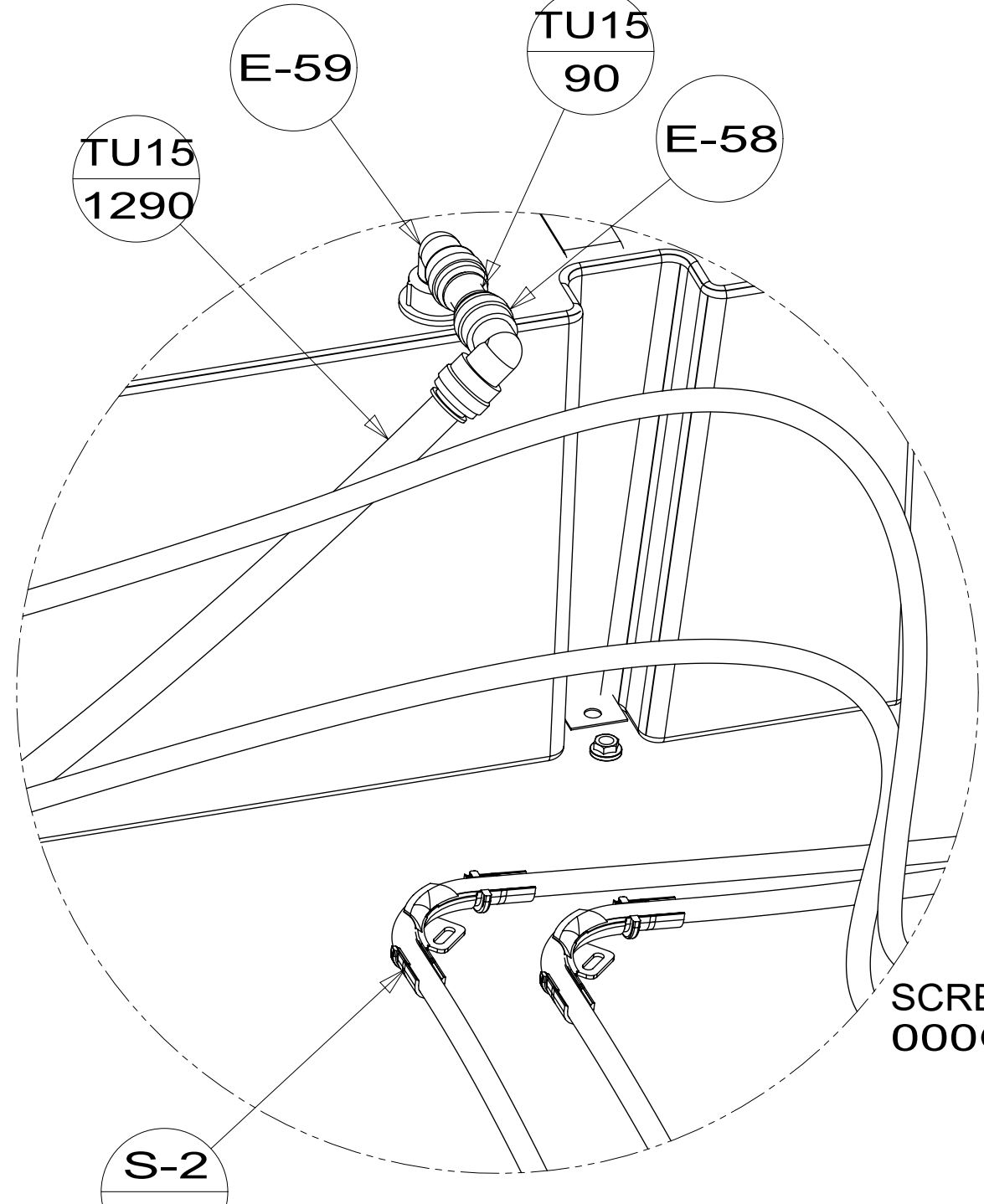
TANK ASM-WATER,70 GAL
000291128 / 342819-04-000

STRAP-TANK,WATER
118994-10-CHT (2)

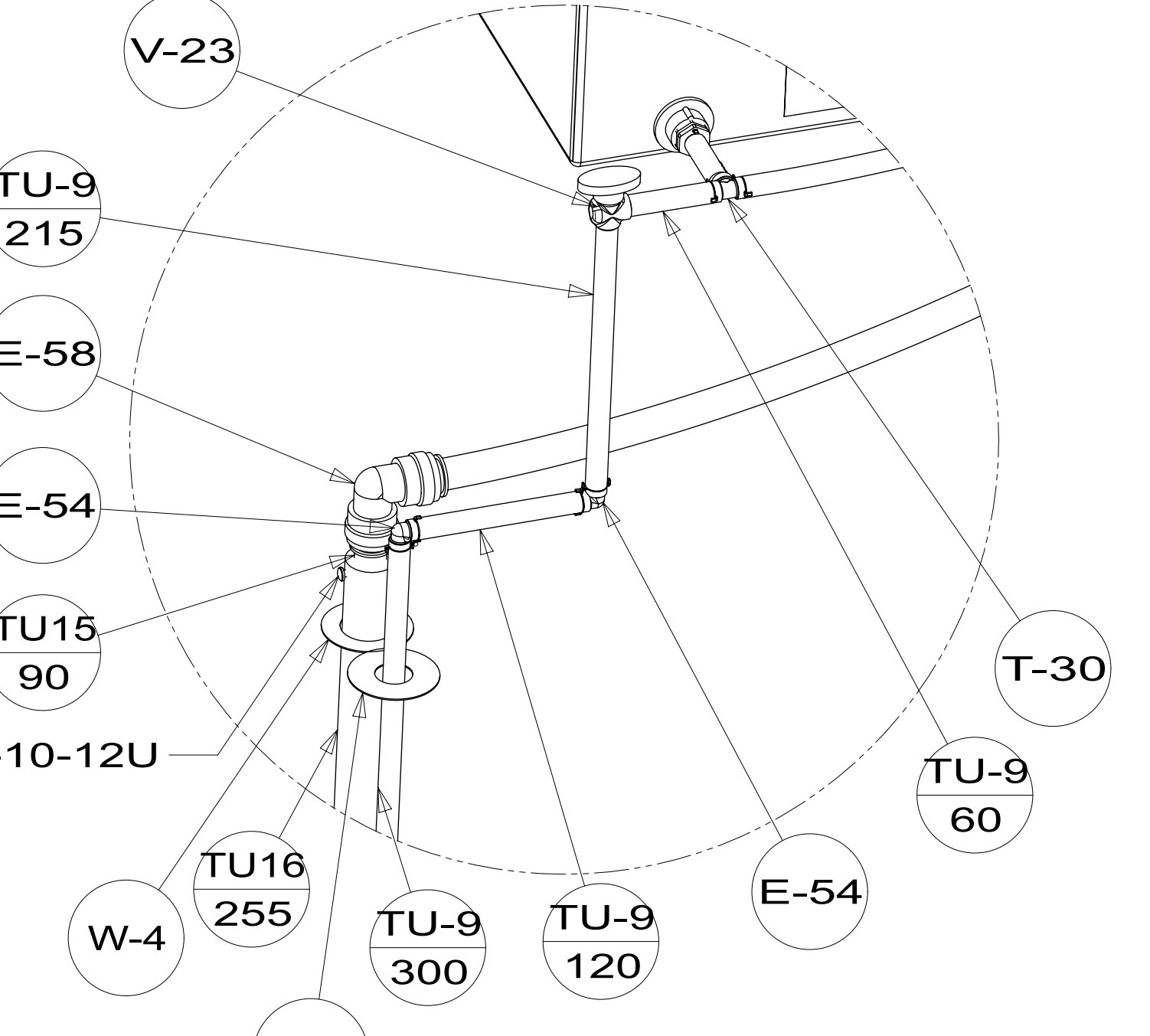


VIEW CA

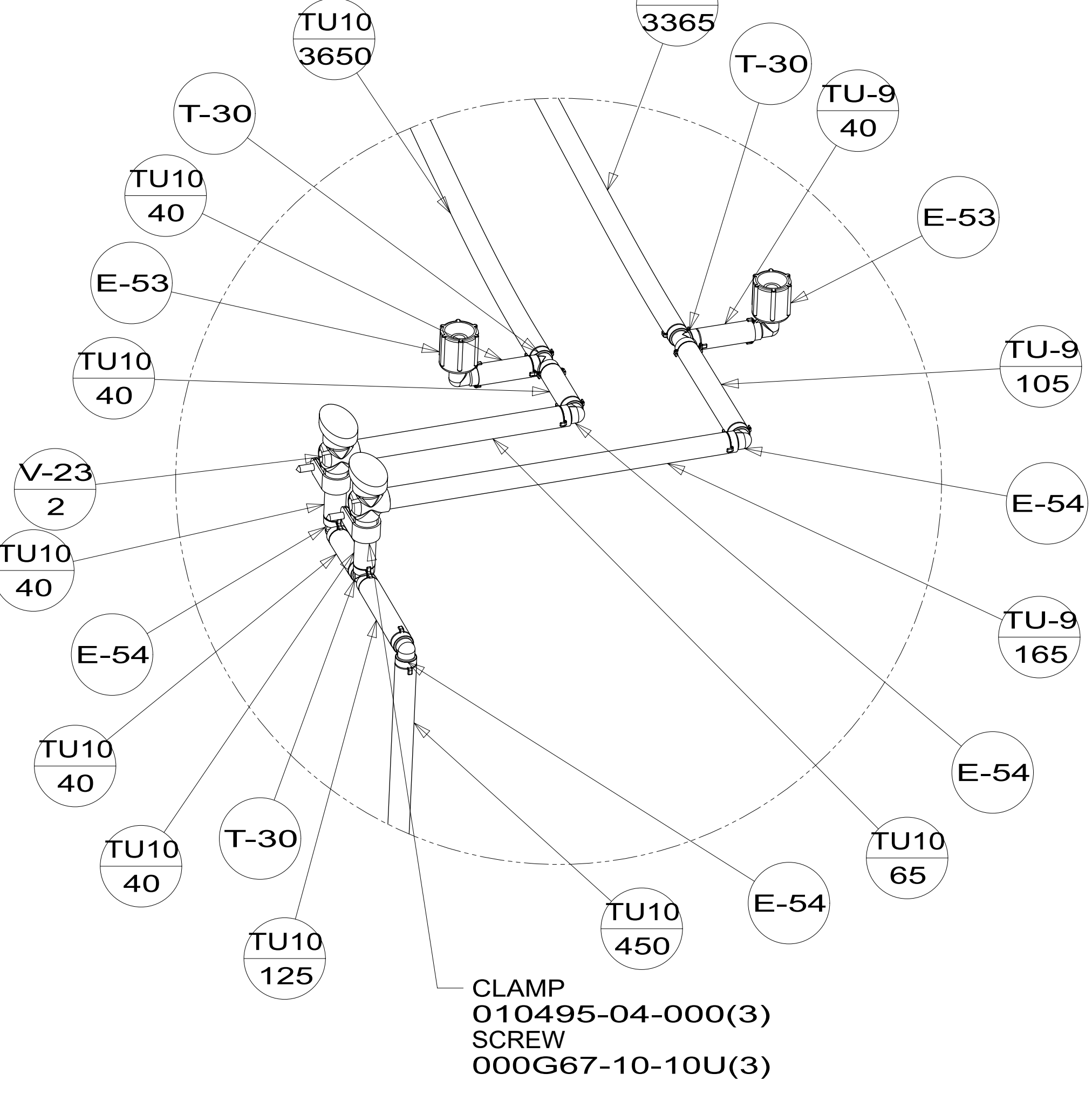
DETAIL CB



DETAIL CB
(SHOWN W/O FLOOR)

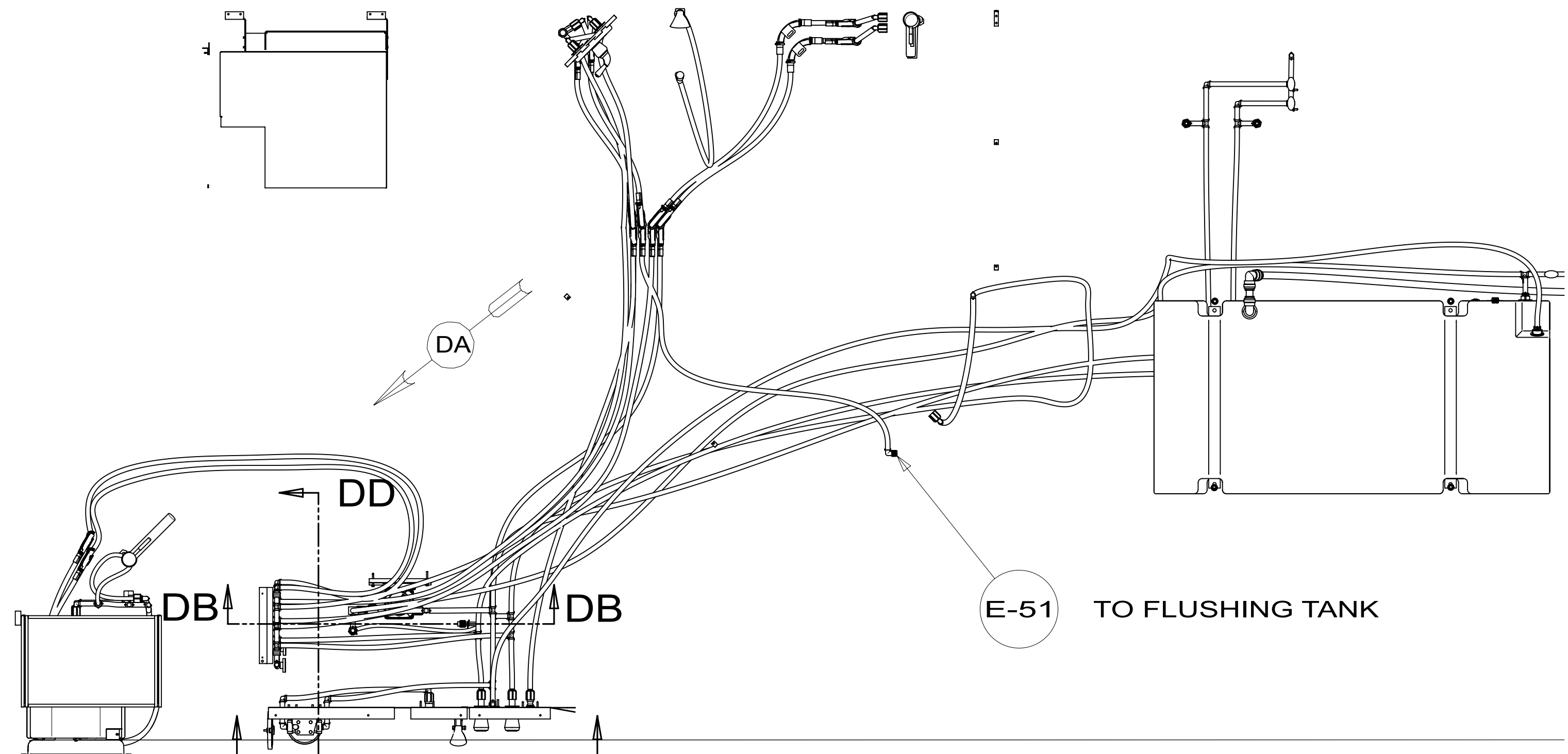


DETAIL CC

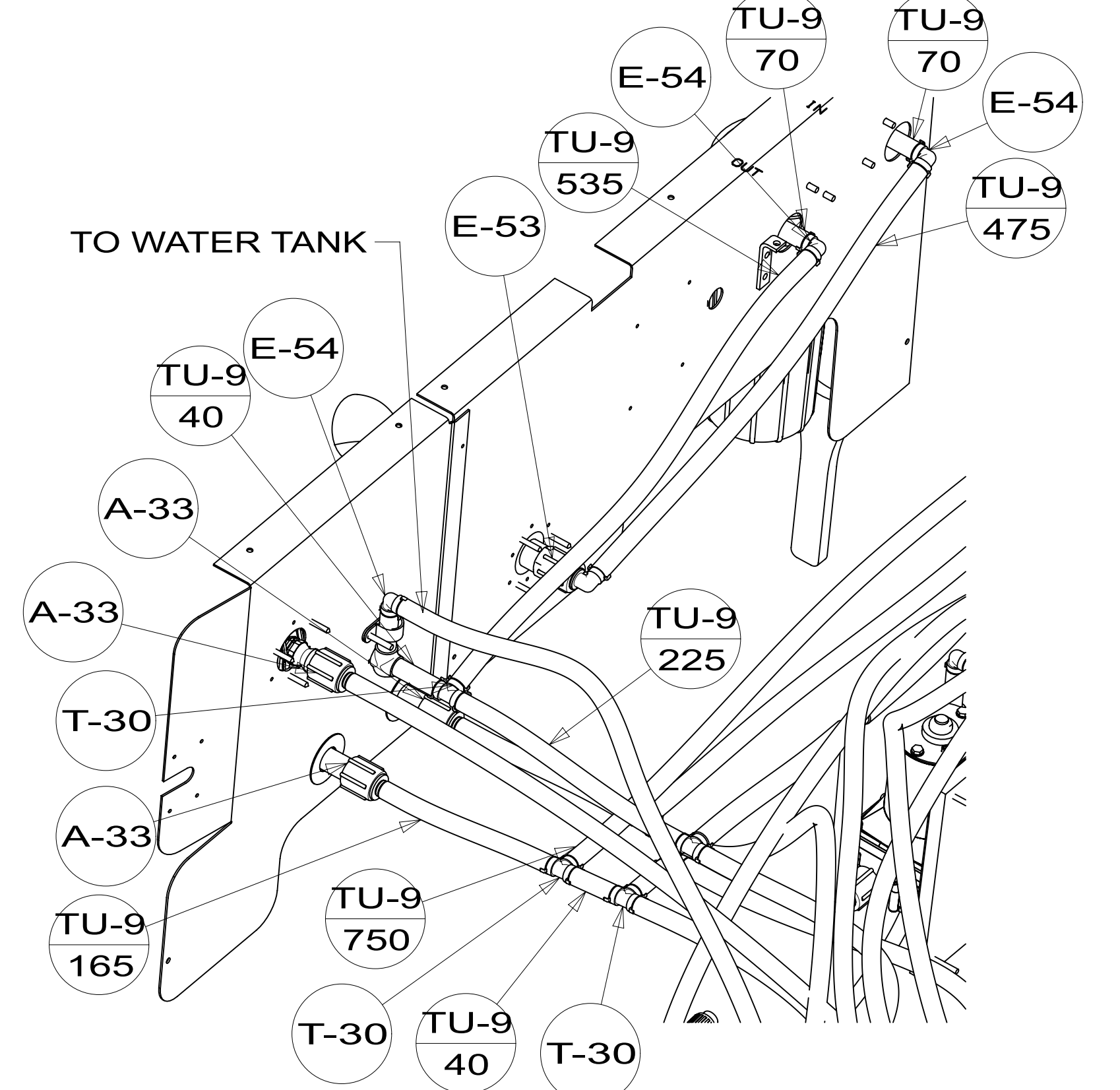


DETAIL CD

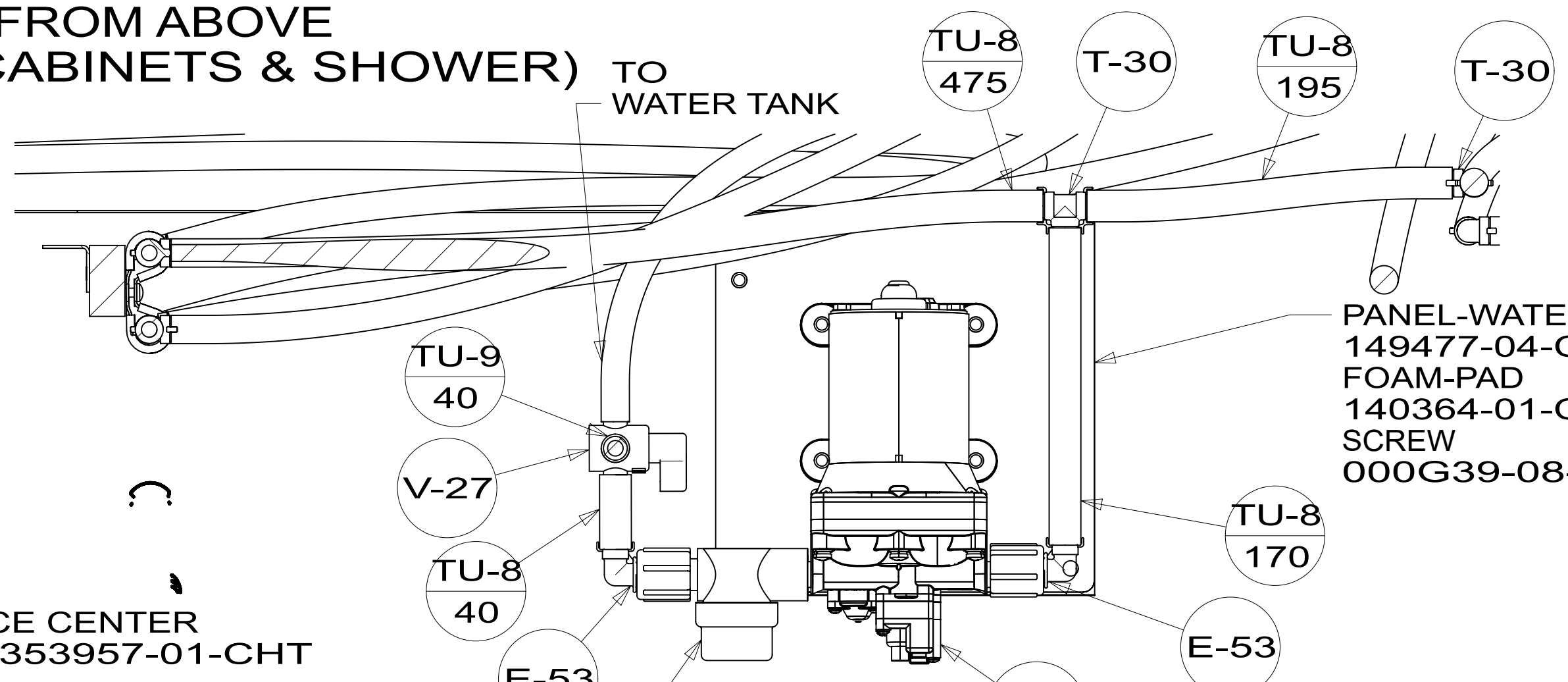
DESCRIPTION:		
WATER SYSTEM INSTL		
SHEET:	ITEM/PART NO.:	REV
3 OF 4	000235929 / 34552801000	



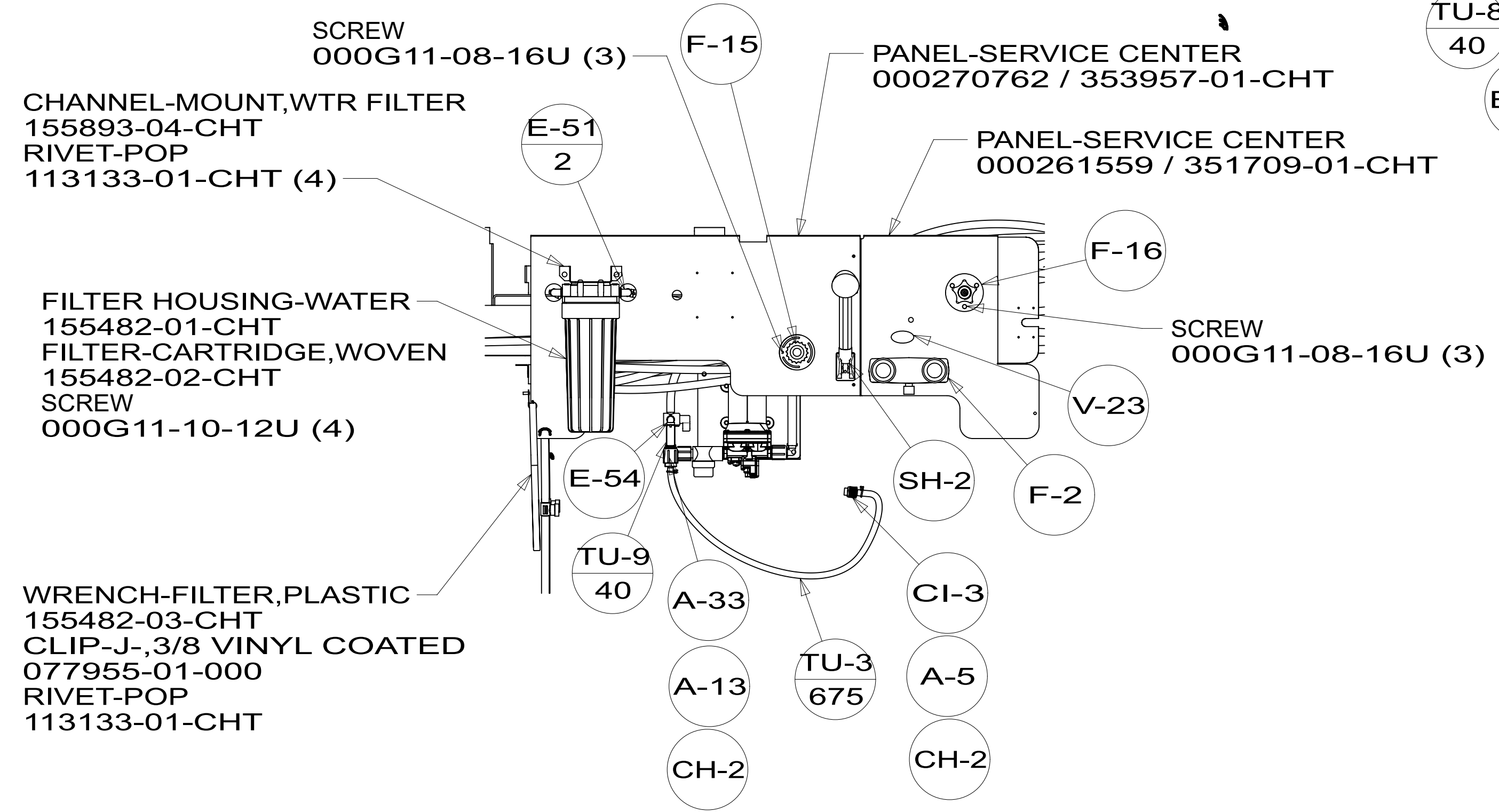
VIEW FROM ABOVE
(W/O FLOOR, CABINETS & SHOWER)



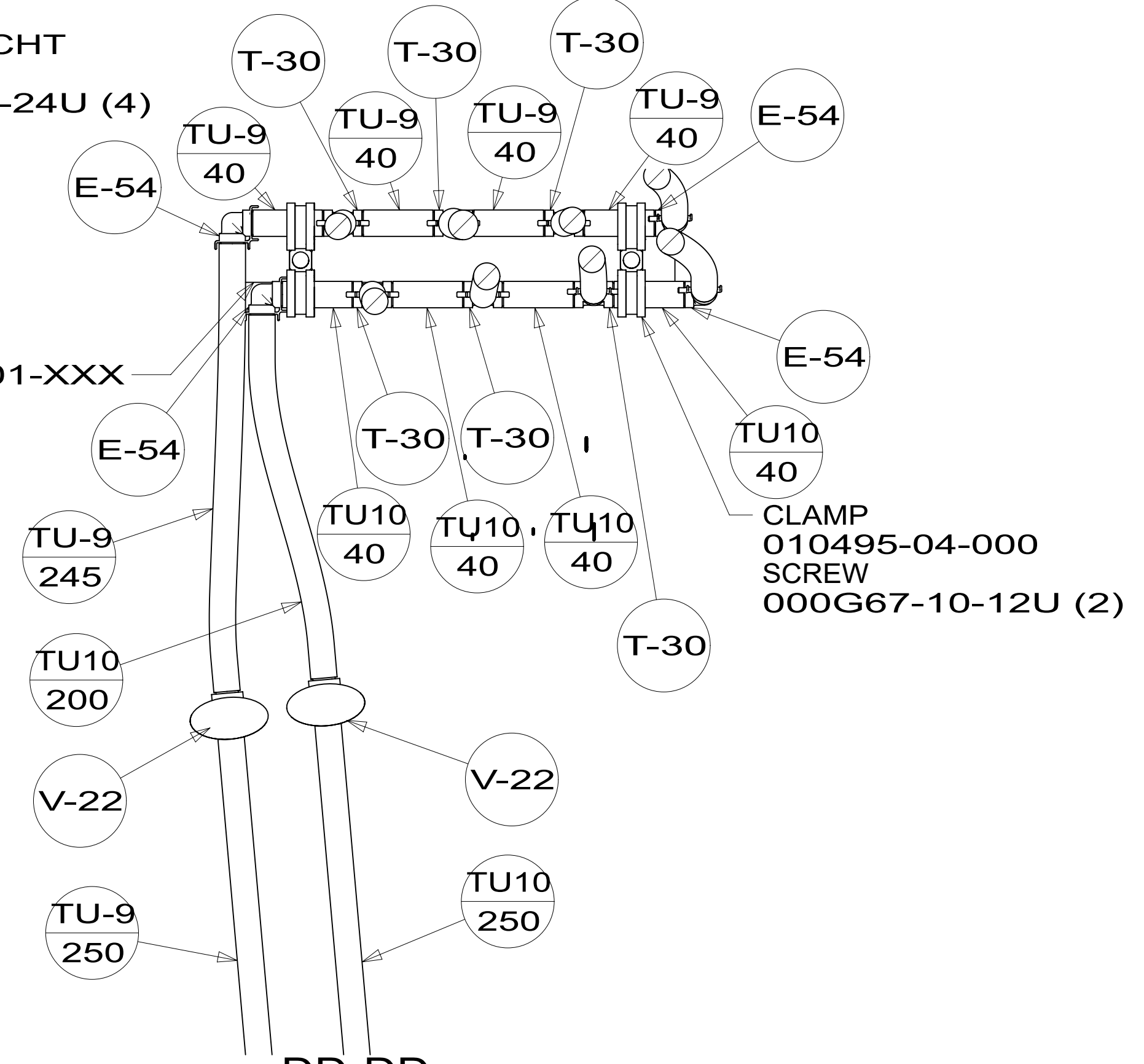
VIEW DA



SECTION DB-DB



SECTION DC-DC



SECTION DD-DD

- SCREW 000G11-08-16U (3)
- CHANNEL-MOUNT, WTR FILTER 155893-04-CHT
- RIVET-POP 113133-01-CHT (4)
- FILTER HOUSING-WATER 155482-01-CHT
- FILTER-CARTRIDGE, WOVEN 155482-02-CHT
- SCREW 000G11-10-12U (4)
- WRENCH-FILTER, PLASTIC 155482-03-CHT
- CLIP-J-, 3/8 VINYL COATED 077955-01-000
- RIVET-POP 113133-01-CHT

PANEL-SERVICE CENTER 000270762 / 353957-01-CHT

PANEL-SERVICE CENTER 000261559 / 351709-01-CHT

PANEL-WATER PUMP 149477-04-CHT
FOAM-PAD 140364-01-CHT
SCREW 000G39-08-24U (4)

ANGLE ASM 000256883 / 350545-01-XXX

DESCRIPTION: WATER SYSTEM INSTL		
SHEET: 4 OF 4	ITEM/PART NO: 000235929 / 34552801000	REV
		1 30-Apr-2024