

8 7 6 5 4 3 2 1

D

D

C

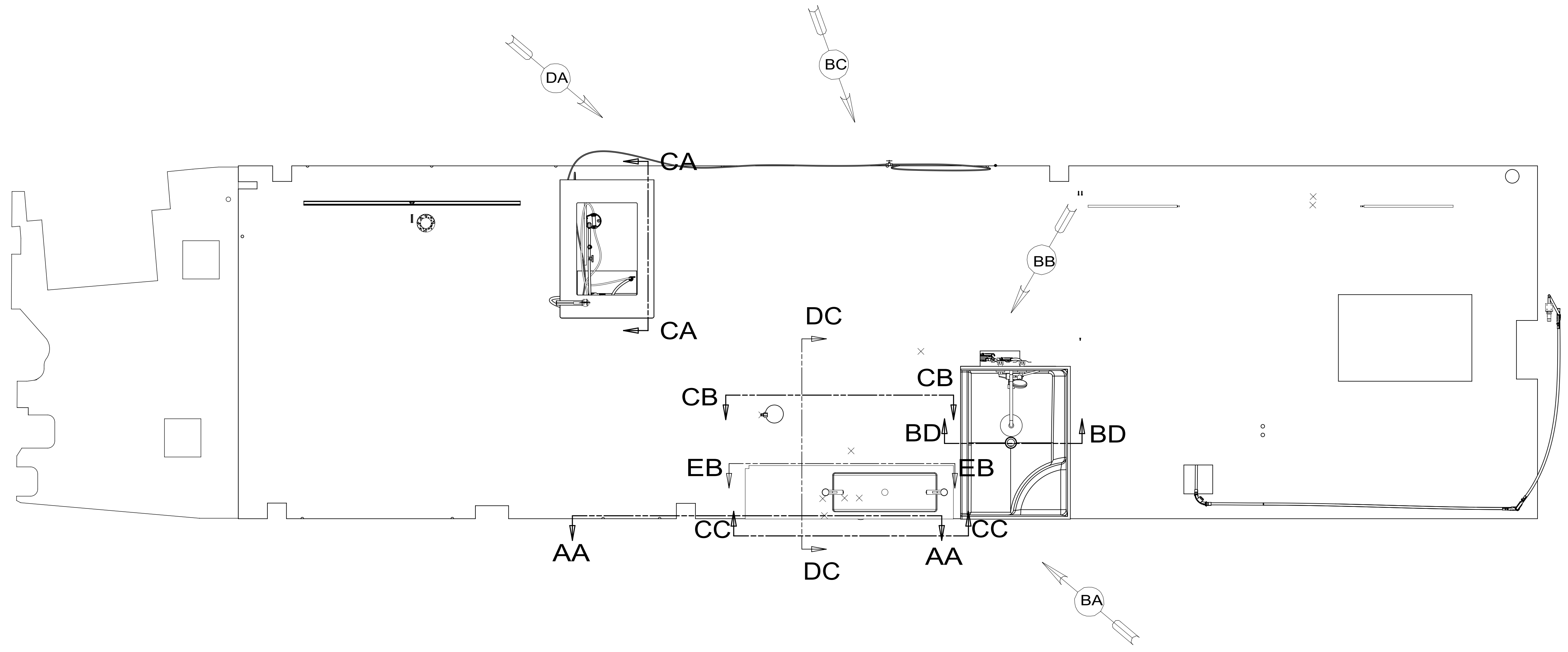
C

B

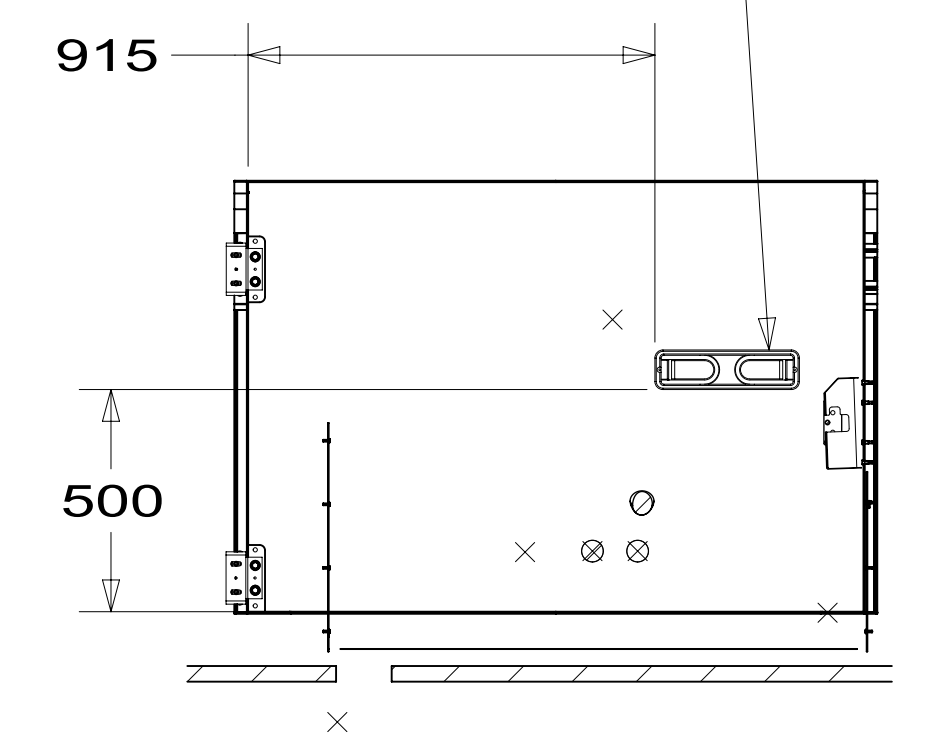
B

A

A



HOLDER-PAPER TOWEL
184493-01-CHT
RIVET
118626-01-CHT(2)



SECTION AA-AA

- NOTES:
1. PLASTIC FITTINGS TO BE SEALED WITH SEALANT 084456-01-000.
 2. TUBING TO BE INSTALLED WITH SUFFICIENT SLOPE TO PROVIDE DRAINAGE TO NEAREST VALVE.
 3. ALL TUBING TO BE SECURED AT 1200 INTERVALS MAXIMUM WITH CLAMP 010495-01-000 AND SCREW 000G67-10-12U OR EQUIVALENT.
 4. ADD TEFLON TAPE 010405-02-000.
 5. ADD PIPE WRAP (LADDER SCRAP 110157-02-000) INSULATION.
 6. LABEL HOT AND COLD SUPPLY TUBES AND TAPE FITTING TO TUBE BEFORE CABINET SET TO PREVENT MOVEMENT.
 7. ALL CRIMP FITTINGS TO 5/8" PEX TUBING REQUIRE 5/8" CLAMP 000156248 / 326669-01-000.
 8. ALL CRIMP FITTINGS TO 1/2" PEX TUBING REQUIRE 1/2" CLAMP 000156249 / 326670-01-000.
 9. ALL CRIMP FITTINGS TO 3/4" PEX TUBING REQUIRE 3/4" CLAMP 000156247 / 326668-01-000.

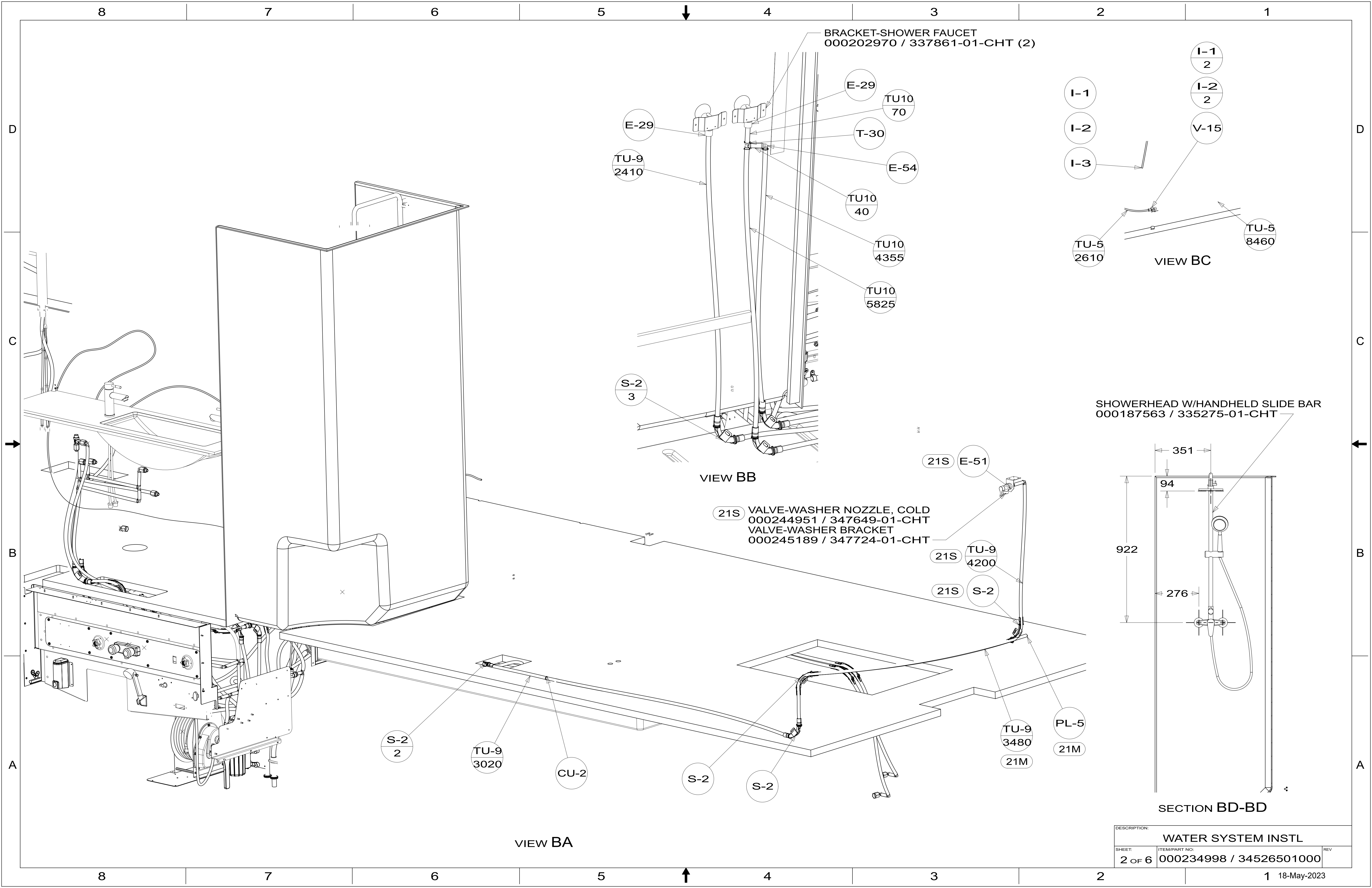
- 215 DISHWASHER WITHOUT
- 214 DISHWASHER DRAWER STYLE
- 21M WASHER/DRYER PREP
- 21S WASHER & DRYER-PAIR

X-X

FOR
WATER
CALLOUTS
SEE DWG NO.
000209446 /
303369-01-000

WINNEBAGO COPYRIGHT 2023 WINNEBAGO INDUSTRIES, INC.		ALL DIMENSIONS ARE IN MILLIMETERS	
DSNR:		MATERIAL:	
DFTR:		WEIGHT: (LBS)	
UNSPECIFIED TOLERANCES:		FIRST USED: (REF)	
WHOLE DIM (X)	: 3	22 N36K	
ONE-PLACE (X.X)	: 1.5		
TWO-PLACE (X.XX)	: 0.50		
ANGLE	: 1°		
REFER TO ES0018 FOR FASTENER TIGHTENING GUIDELINES		DESCRIPTION:	
WATER SYSTEM INSTL			
SHEET:	ITEM/PART NO.:	REV	
1 OF 6	000234998 / 34526501000		
REF:		1 18-May-2023	

8 7 6 5 4 3 2 1



BRACKET-SHOWER FAUCET
000202970 / 337861-01-CHT (2)

- E-29
- TU-9
2410
- TU-10
70
- T-30
- E-54
- TU-10
40
- TU-10
4355
- TU-10
5825
- S-2
3

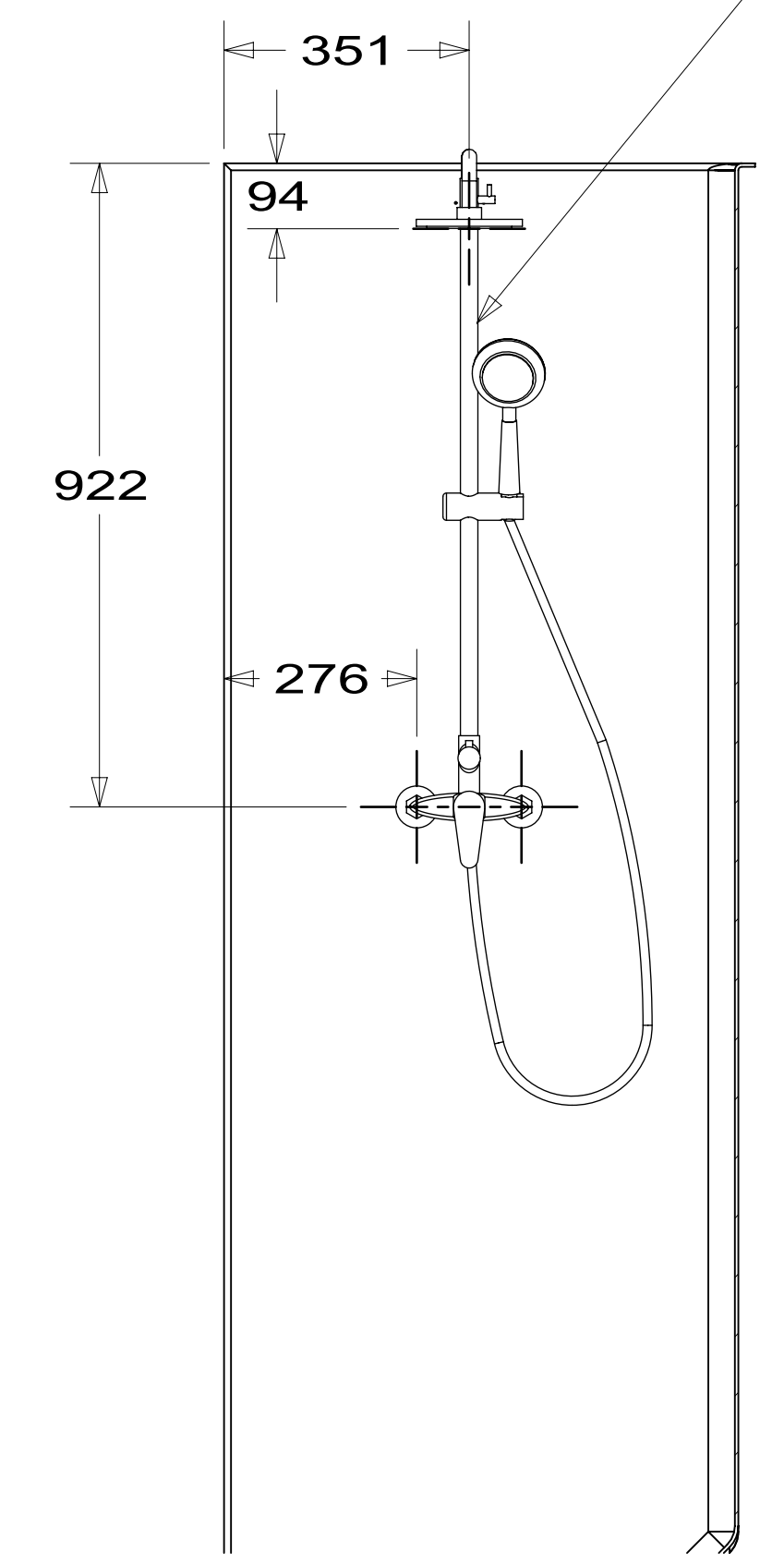
- I-1
- I-2
- I-3
- I-1
2
- I-2
2
- V-15
- TU-5
2610
- TU-5
8460

VIEW BB

VIEW BC

SHOWERHEAD W/HANDHELD SLIDE BAR
000187563 / 335275-01-CHT

- 21S E-51
- 21S VALVE-WASHER NOZZLE, COLD
000244951 / 347649-01-CHT
- 21S VALVE-WASHER BRACKET
000245189 / 347724-01-CHT
- 21S TU-9
4200
- 21S S-2

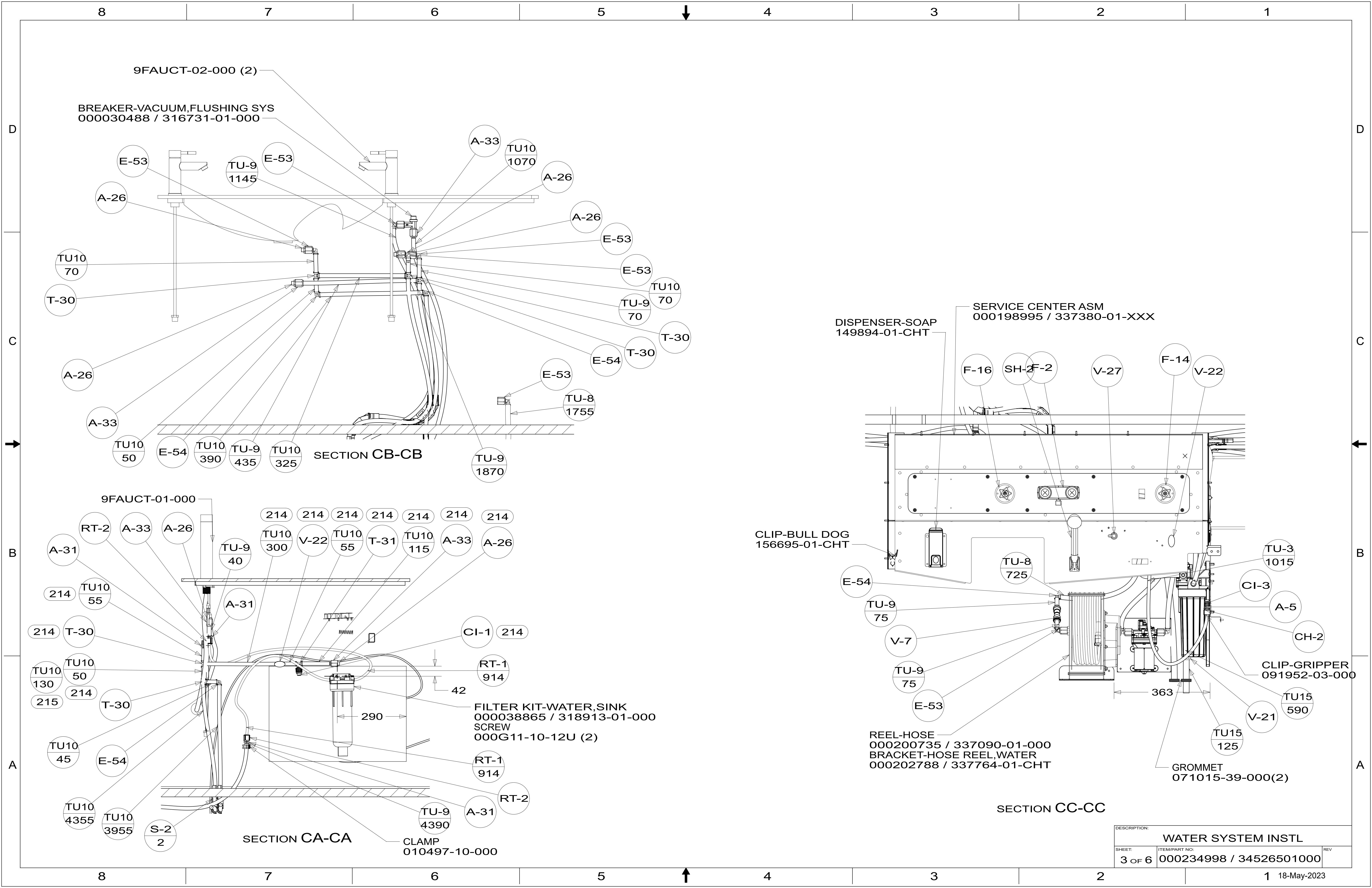


SECTION BD-BD

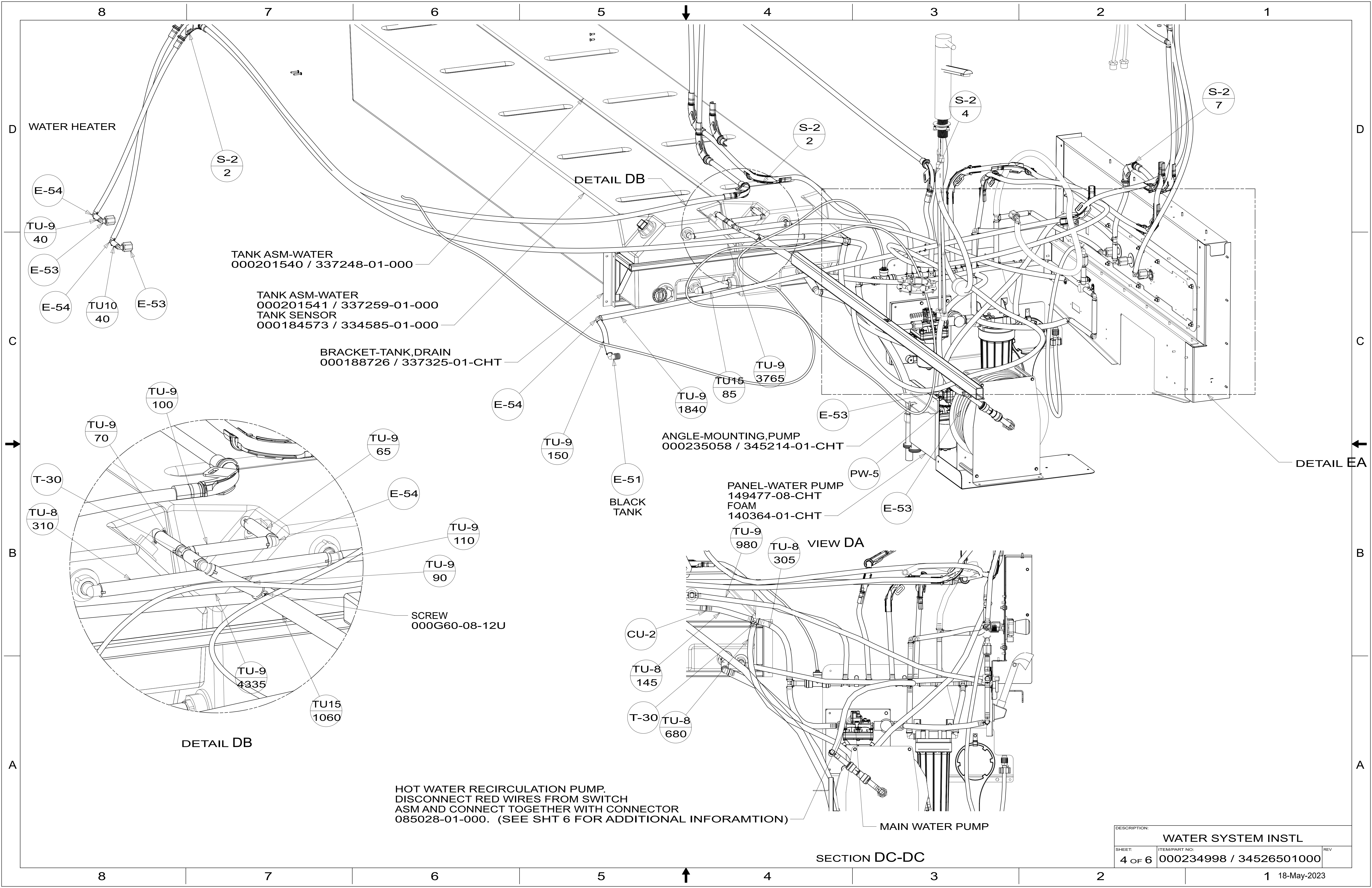
- S-2
2
- TU-9
3020
- CU-2
- S-2
- S-2
- TU-9
3480
- 21M
- PL-5
- 21M

VIEW BA

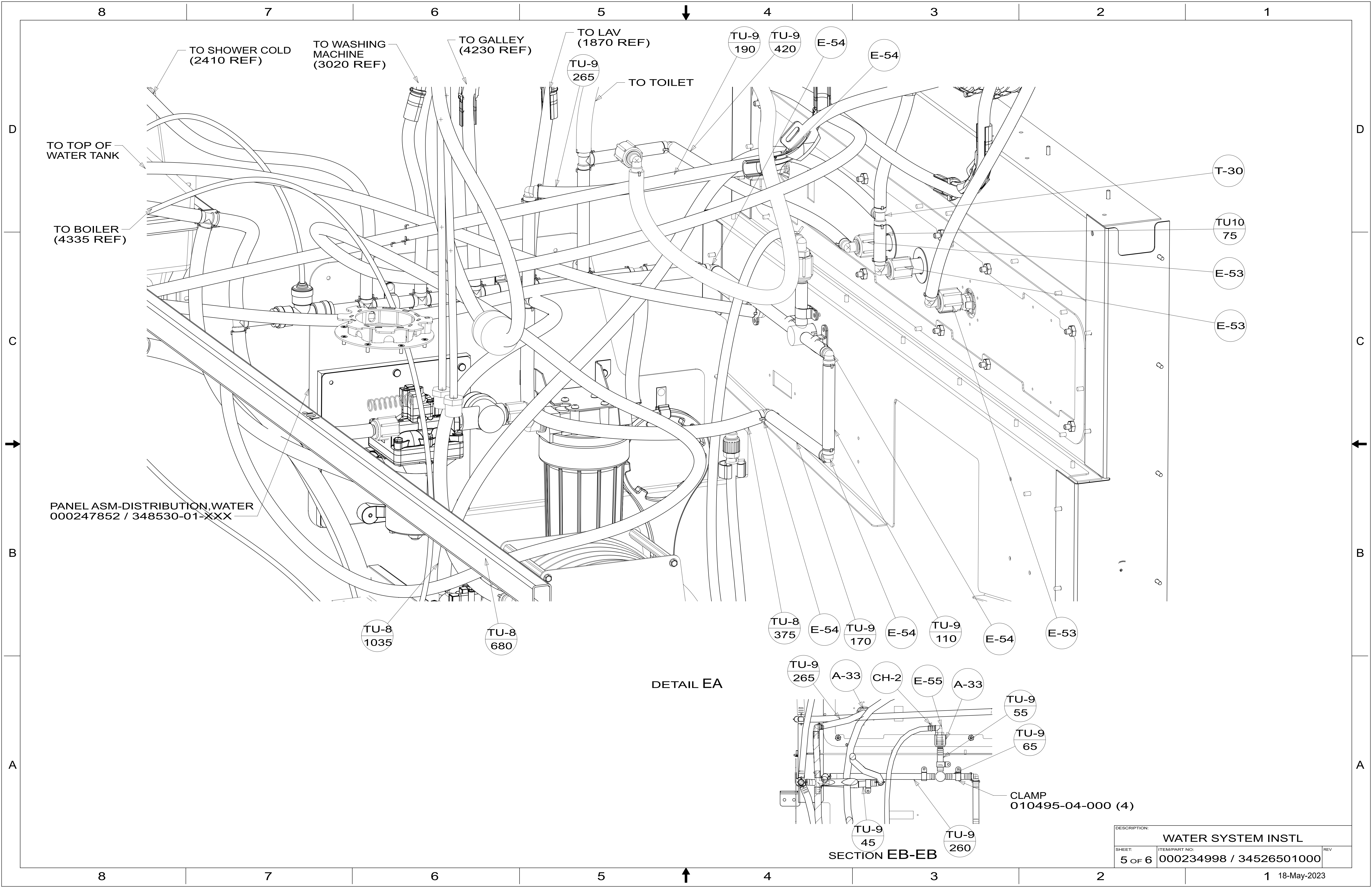
DESCRIPTION:		
WATER SYSTEM INSTL		
SHEET:	ITEM/PART NO.:	REV
2 OF 6	000234998 / 34526501000	



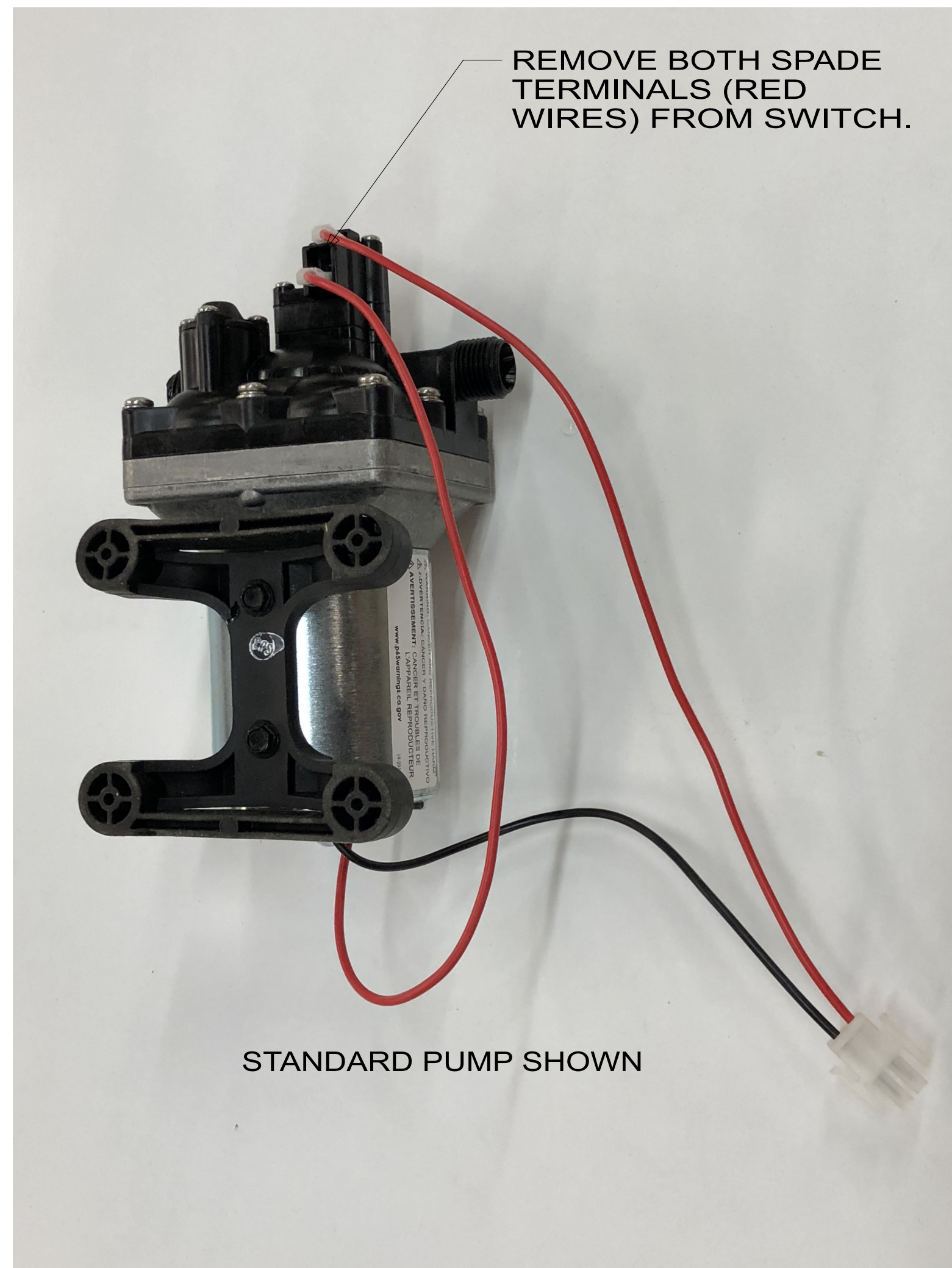
DESCRIPTION:		
WATER SYSTEM INSTL		
SHEET:	ITEM/PART NO.:	REV
3 OF 6	000234998 / 34526501000	



DESCRIPTION:		
WATER SYSTEM INSTL		
SHEET:	ITEM/PART NO.:	REV
4 OF 6	000234998 / 34526501000	



DESCRIPTION:		
WATER SYSTEM INSTL		
SHEET:	ITEM/PART NO.:	REV
5 OF 6	000234998 / 34526501000	

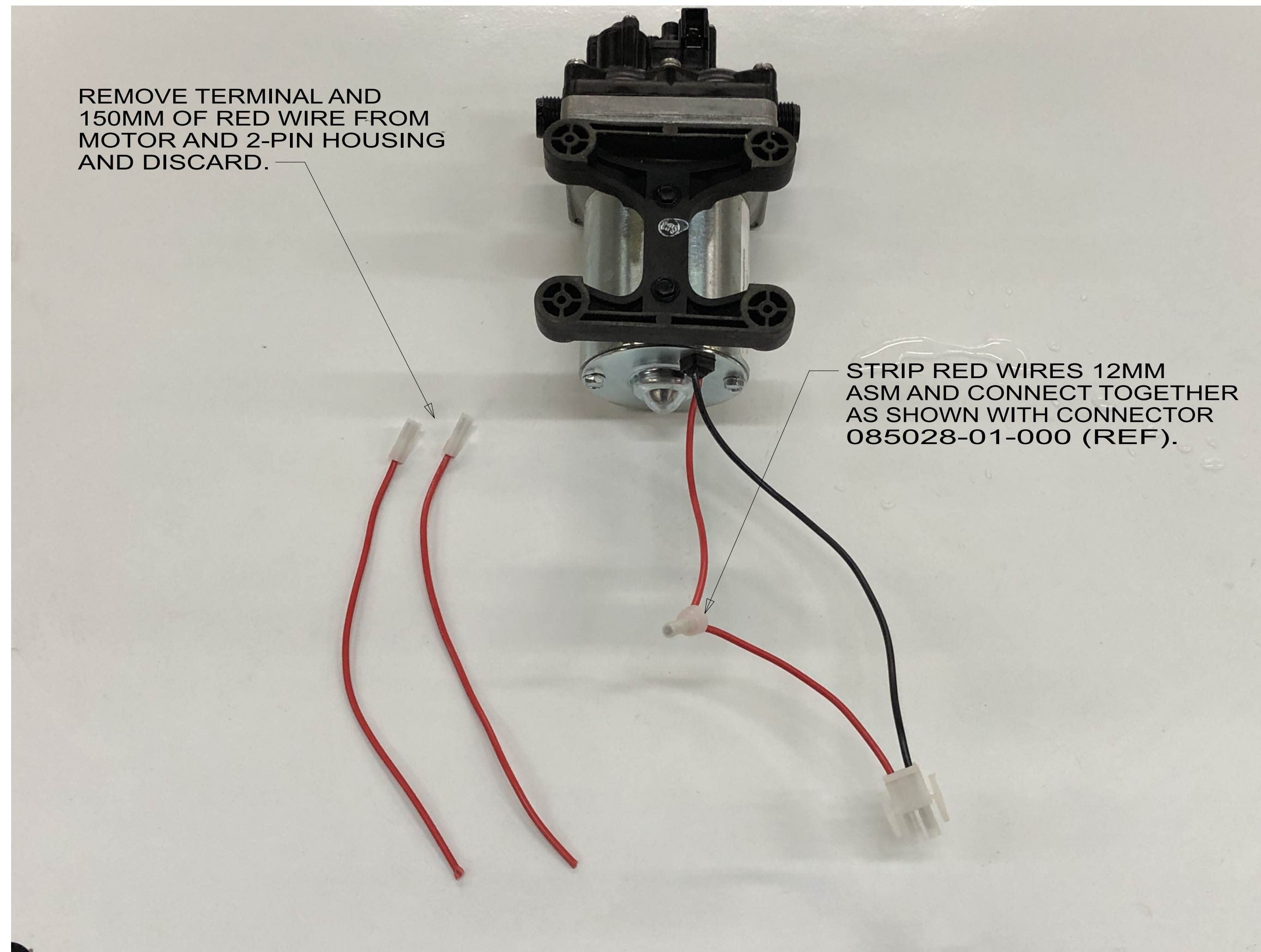


REMOVE BOTH SPADE
TERMINALS (RED
WIRES) FROM SWITCH.

STANDARD PUMP SHOWN

HOT WATER RECIRCULATION PUMP MODIFICATION

STEP 1



REMOVE TERMINAL AND
150MM OF RED WIRE FROM
MOTOR AND 2-PIN HOUSING
AND DISCARD.

STRIP RED WIRES 12MM
ASM AND CONNECT TOGETHER
AS SHOWN WITH CONNECTOR
085028-01-000 (REF).

HOT WATER RECIRCULATION PUMP MODIFICATION

STEP 2

DESCRIPTION:		
WATER SYSTEM INSTL		
SHEET:	ITEM/PART NO.:	REV:
6 OF 6	000234998 / 34526501000	