

8

7

6

5

4

3

2

1

D

D

C

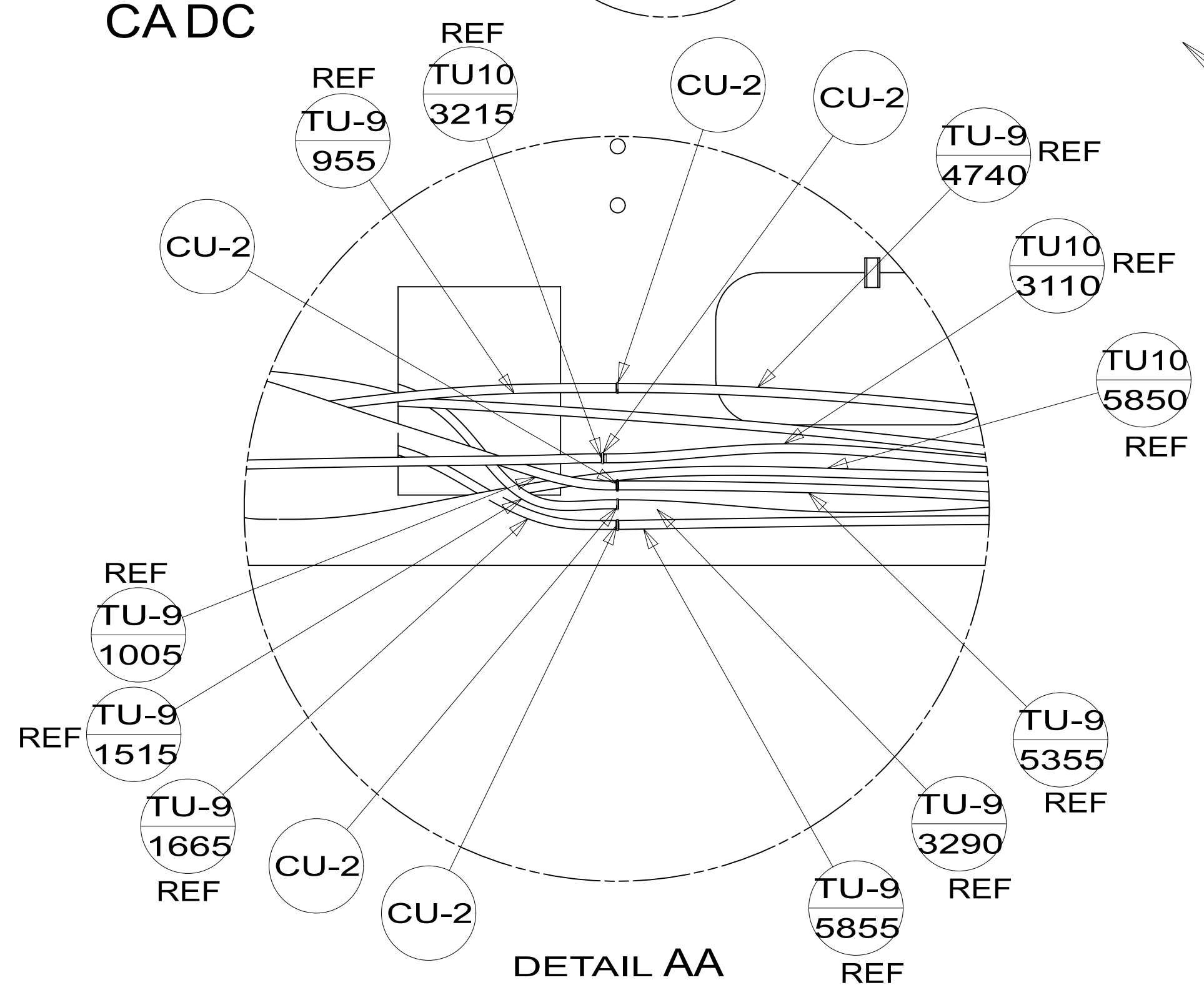
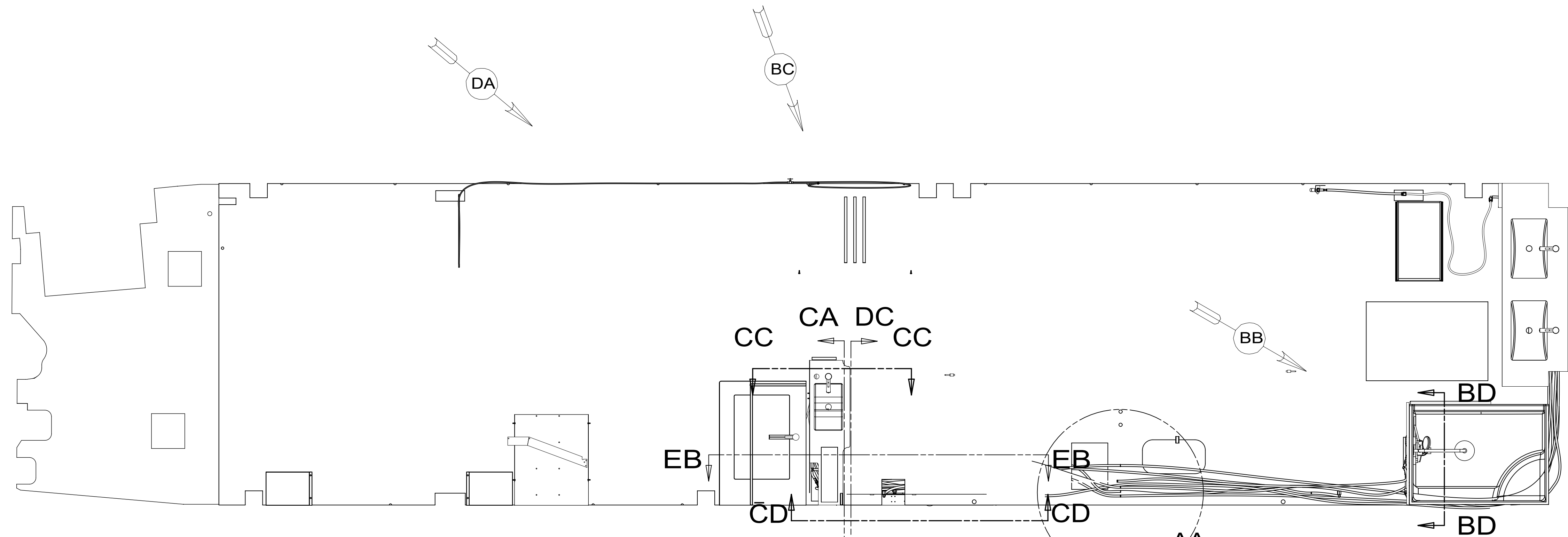
C

B

B

A

A



- NOTES:
1. PLASTIC FITTINGS TO BE SEALED WITH SEALANT 084456-01-000.
 2. TUBING TO BE INSTALLED WITH SUFFICIENT SLOPE TO PROVIDE DRAINAGE TO NEAREST VALVE.
 3. ALL TUBING TO BE SECURED AT 1200 INTERVALS MAXIMUM WITH CLAMP 010495-01-000 AND SCREW 000G67-10-12U OR EQUIVALENT.
 4. ADD TEFLON TAPE 010405-02-000.
 5. ADD PIPE WRAP (LADDER SCRAP 110157-02-000) INSULATION.
 6. LABEL HOT AND COLD SUPPLY TUBES AND TAPE FITTING TO TUBE BEFORE CABINET SET TO PREVENT MOVEMENT.
 7. ALL CRIMP FITTINGS TO 5/8" PEX TUBING REQUIRE 5/8" CLAMP 000156248 / 326669-01-000.
 8. ALL CRIMP FITTINGS TO 1/2" PEX TUBING REQUIRE 1/2" CLAMP 000156249 / 326670-01-000.
 9. ALL CRIMP FITTINGS TO 3/4" PEX TUBING REQUIRE 3/4" CLAMP 000156247 / 326668-01-000.

- (215) DISHWASHER WITHOUT
- (214) DISHWASHER DRAWER STYLE
- (21M) WASHER/DRYER PREP
- (21S) WASHER & DRYER-PAIR

WINNEBAGO COPYRIGHT 2022 WINNEBAGO INDUSTRIES, INC.	
DSNR:	ALL DIMENSIONS ARE IN MILLIMETERS
DIFTR:	
UNSPECIFIED TOLERANCES:	MATERIAL:
WHOLE DIM (X) : 3	
ONE-PLACE (X.X) : 1.5	
TWO-PLACE (X.XX) : 0.50	
ANGLE : 1°	
REFER TO ES0018 FOR FASTENER TIGHTENING GUIDELINES	WEIGHT: (LBS) FIRST USED: (REF)
	21 N40P
DESCRIPTION: WATER SYSTEM INSTL	
SHEET: 1 OF 6	ITEM/PART NO: 000219220 / 34191701000
REV:	

(X-X)
FOR WATER CALLOUTS SEE DWG NO. 000209446 / 303369-01-000

8

7

6

5

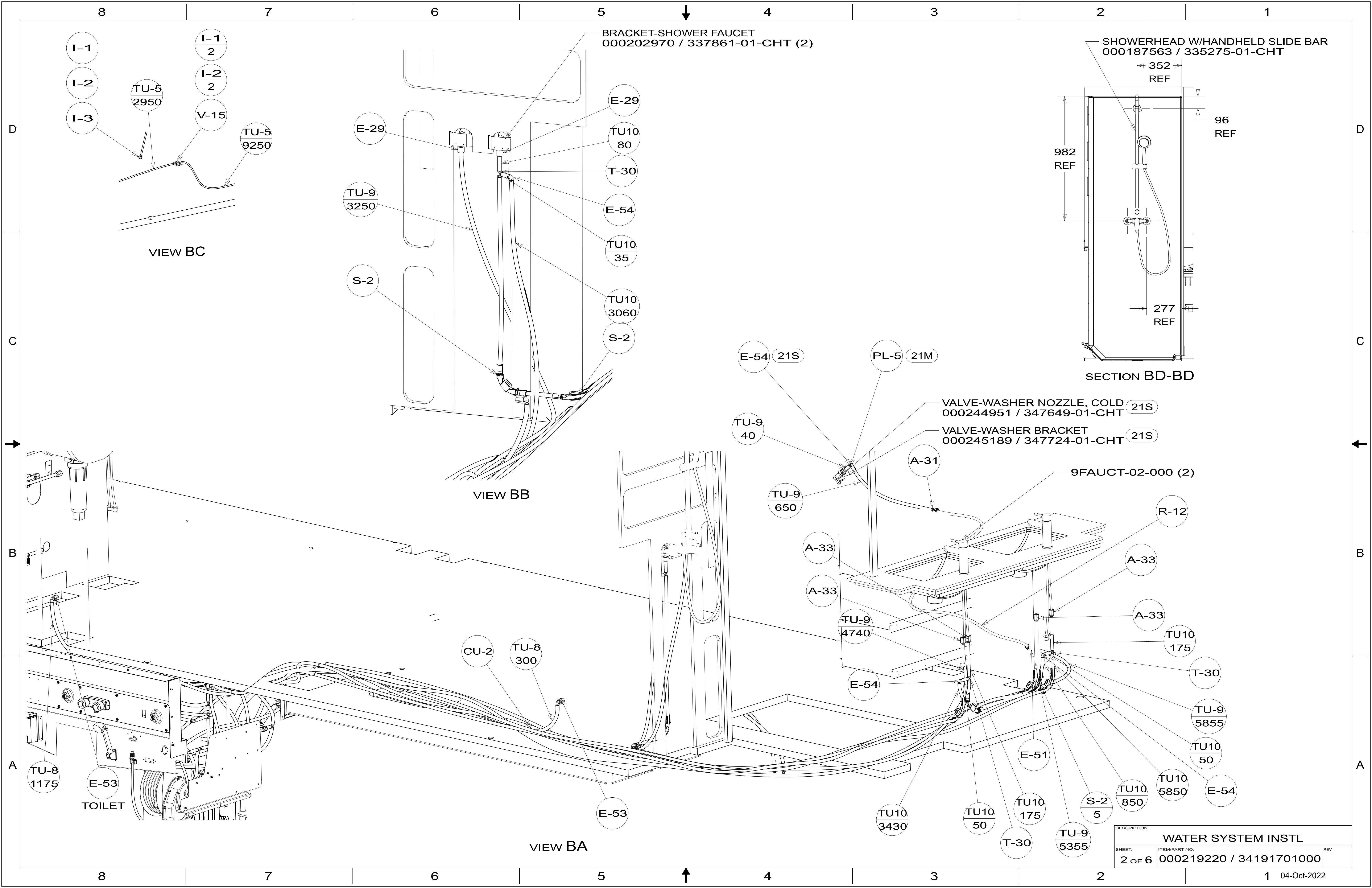
4

3

2

1

04-Oct-2022



BRACKET-SHOWER FAUCET
000202970 / 337861-01-CHT (2)

SHOWERHEAD W/HANDHELD SLIDE BAR
000187563 / 335275-01-CHT

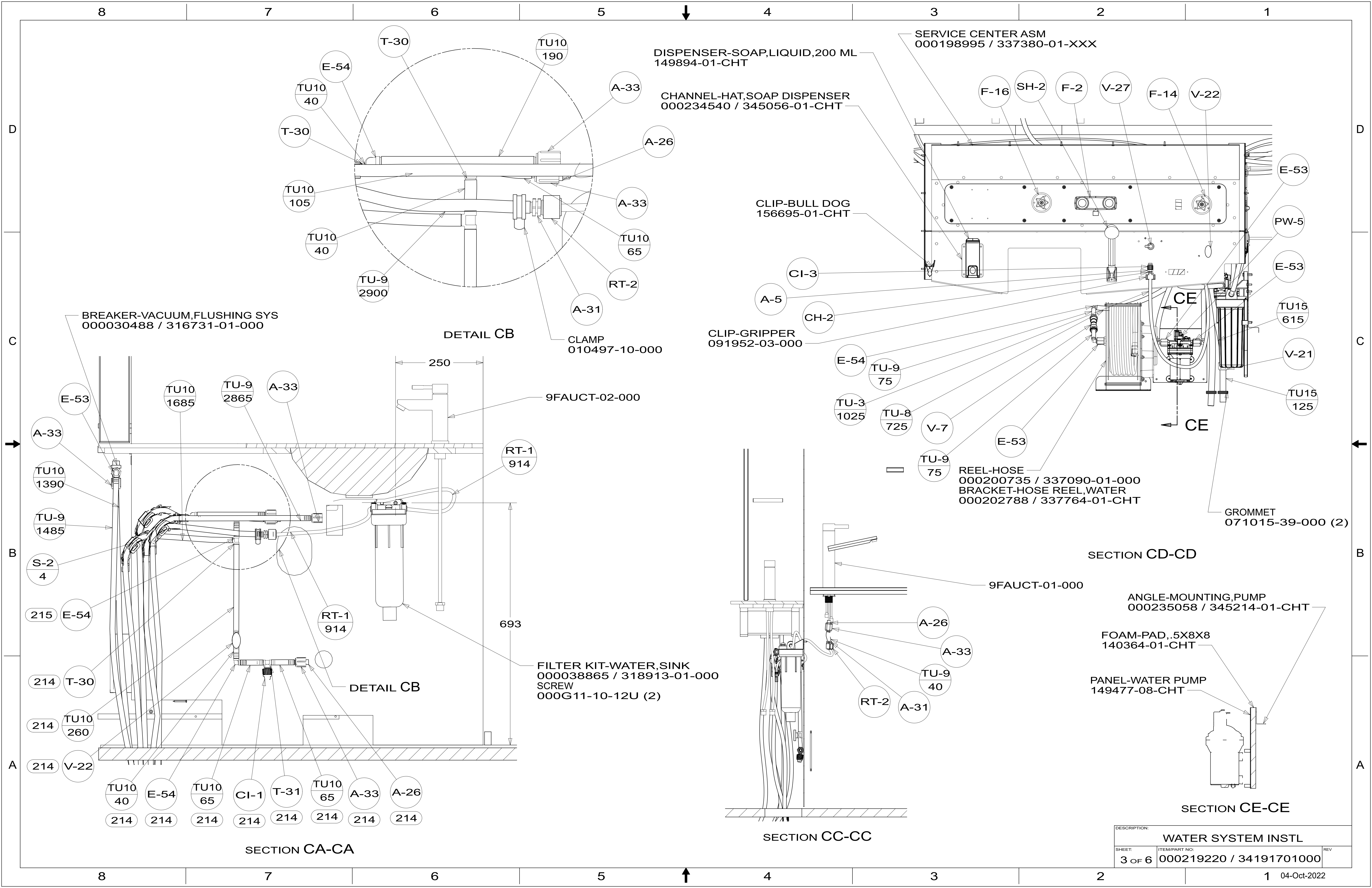
VIEW BC

VIEW BB

VIEW BA

SECTION BD-BD

DESCRIPTION:		
WATER SYSTEM INSTL		
SHEET:	ITEM/PART NO.:	REV
2 OF 6	000219220 / 34191701000	



DISPENSER-SOAP, LIQUID, 200 ML
149894-01-CHT

CHANNEL-HAT, SOAP DISPENSER
000234540 / 345056-01-CHT

SERVICE CENTER ASM
000198995 / 337380-01-XXX

CLIP-BULL DOG
156695-01-CHT

CLIP-GRIPPER
091952-03-000

REEL-HOSE
000200735 / 337090-01-000
BRACKET-HOSE REEL, WATER
000202788 / 337764-01-CHT

9FAUCT-02-000

9FAUCT-01-000

FILTER KIT-WATER, SINK
000038865 / 318913-01-000
SCREW
000G11-10-12U (2)

ANGLE-MOUNTING, PUMP
000235058 / 345214-01-CHT

FOAM-PAD, .5X8X8
140364-01-CHT

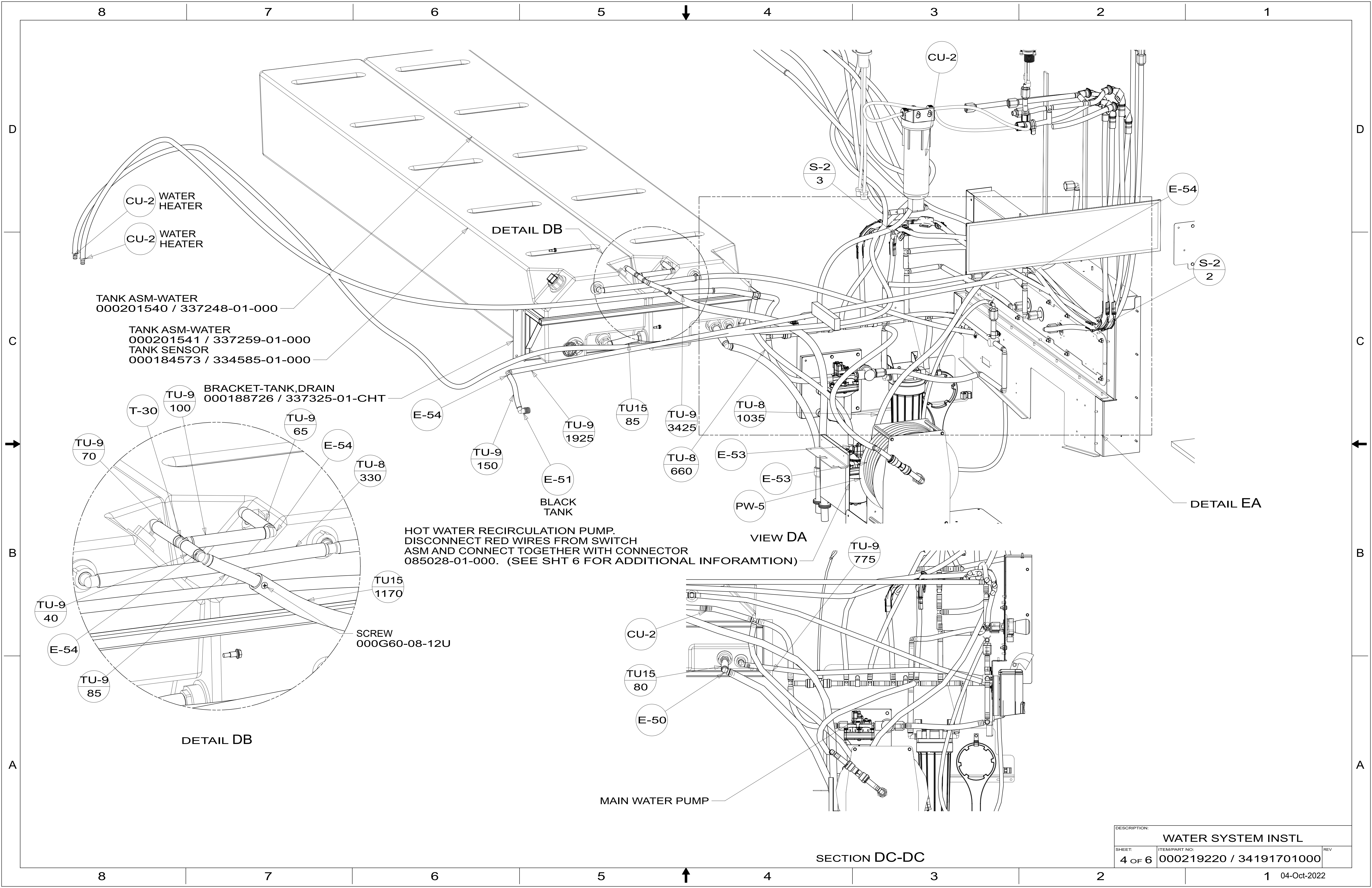
PANEL-WATER PUMP
149477-08-CHT

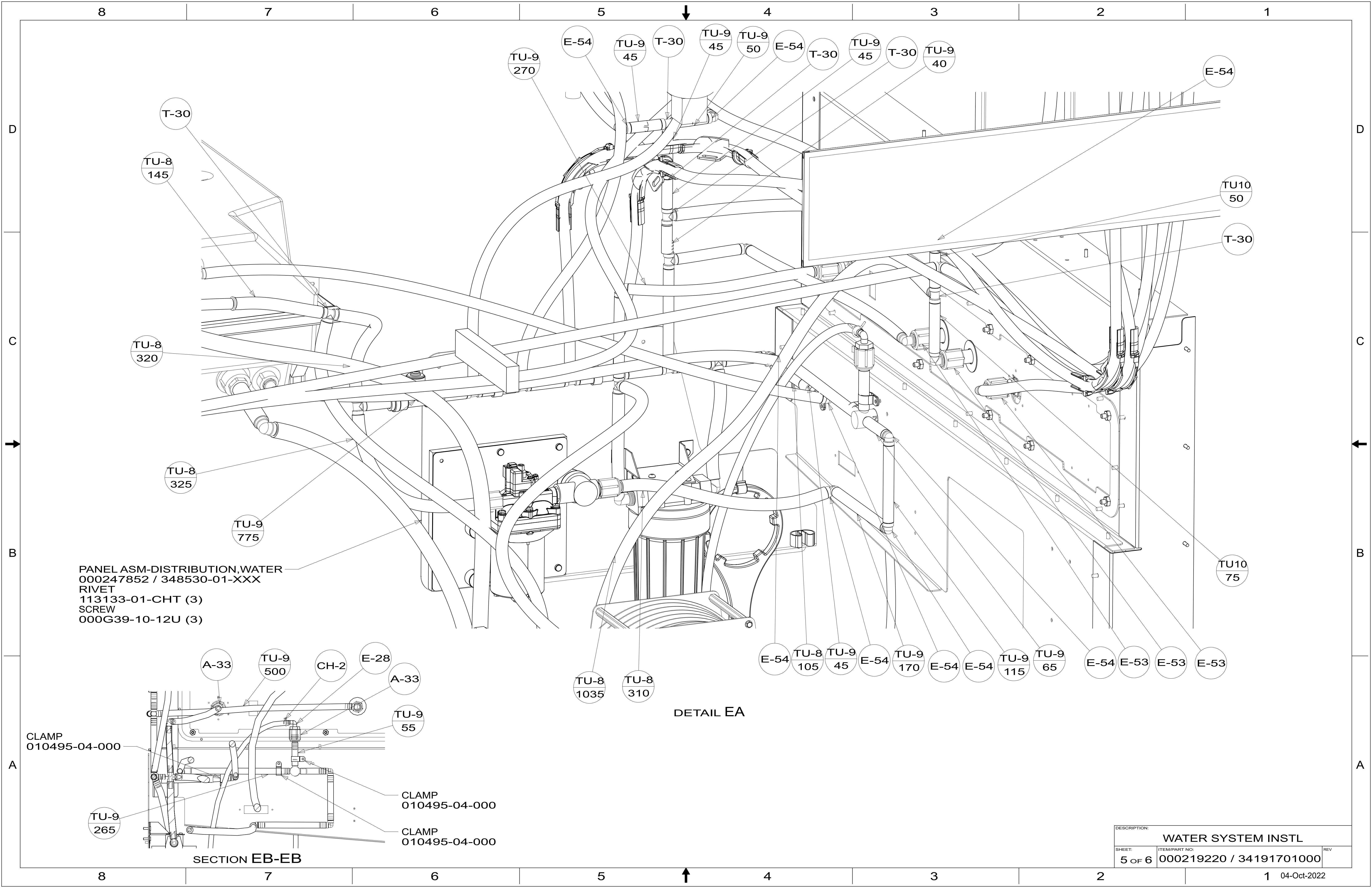
SECTION CE-CE

SECTION CC-CC

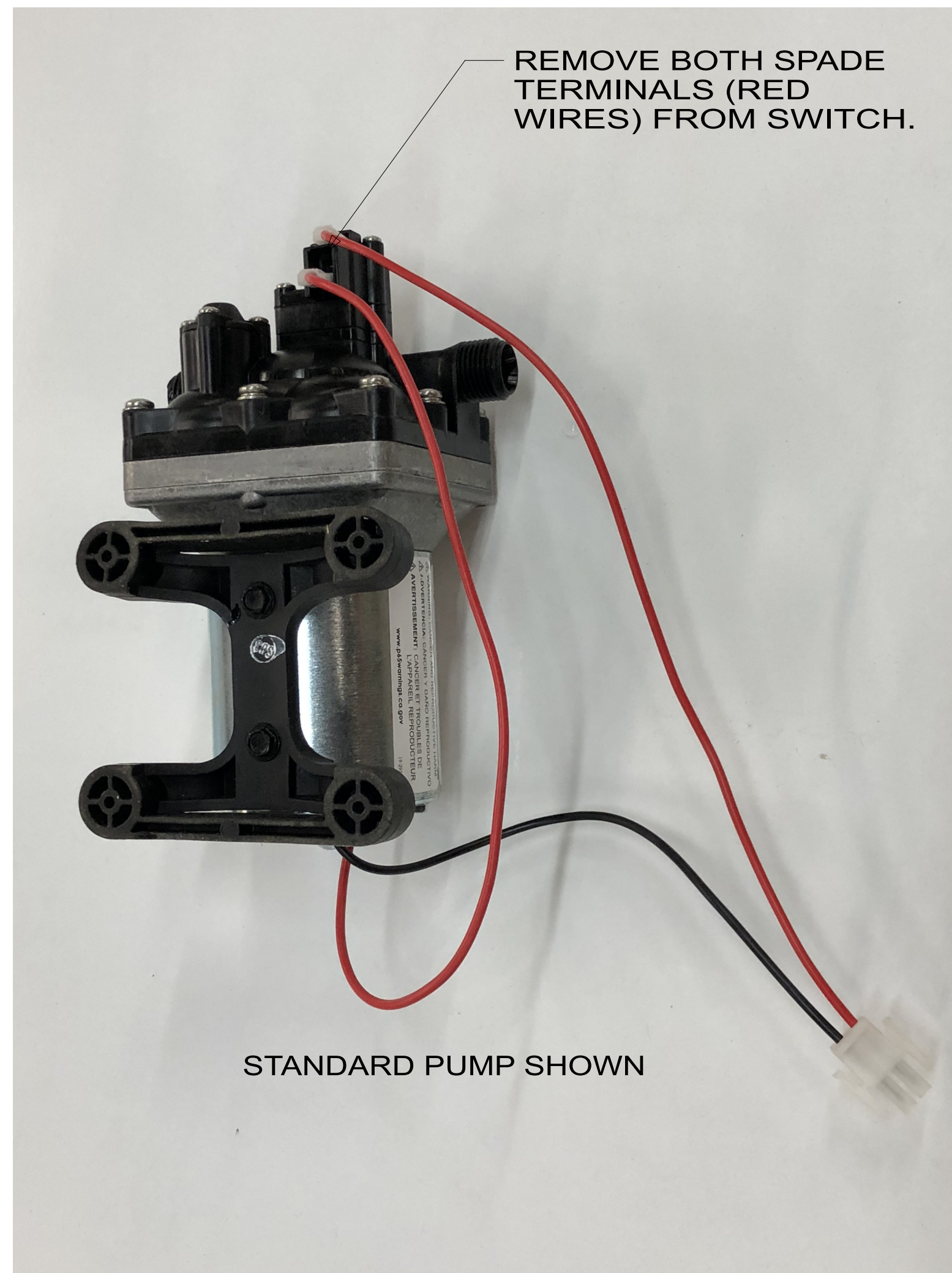
SECTION CA-CA

DESCRIPTION:		
WATER SYSTEM INSTL		
SHEET:	ITEM/PART NO.:	REV
3 OF 6	000219220 / 34191701000	





DESCRIPTION:		
WATER SYSTEM INSTL		
SHEET:	ITEM/PART NO.:	REV
5 OF 6	000219220 / 34191701000	

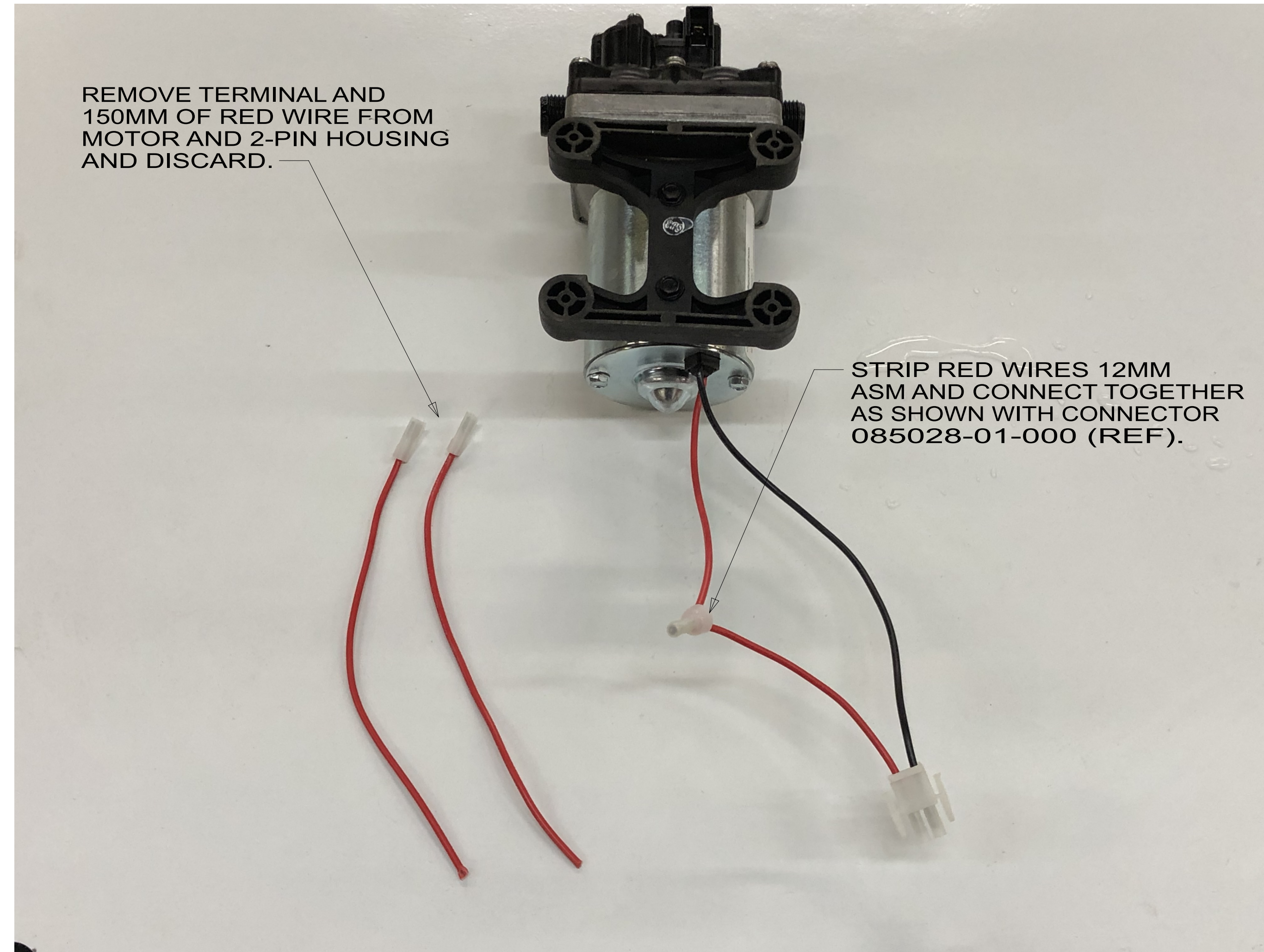


REMOVE BOTH SPADE
TERMINALS (RED
WIRES) FROM SWITCH.

STANDARD PUMP SHOWN

HOT WATER RECIRCULATION PUMP MODIFICATION

STEP 1



REMOVE TERMINAL AND
150MM OF RED WIRE FROM
MOTOR AND 2-PIN HOUSING
AND DISCARD.

STRIP RED WIRES 12MM
ASM AND CONNECT TOGETHER
AS SHOWN WITH CONNECTOR
085028-01-000 (REF).

HOT WATER RECIRCULATION PUMP MODIFICATION

STEP 2

DESCRIPTION:		
WATER SYSTEM INSTL		
SHEET:	ITEM/PART NO.:	REV
6 OF 6	000219220 / 34191701000	