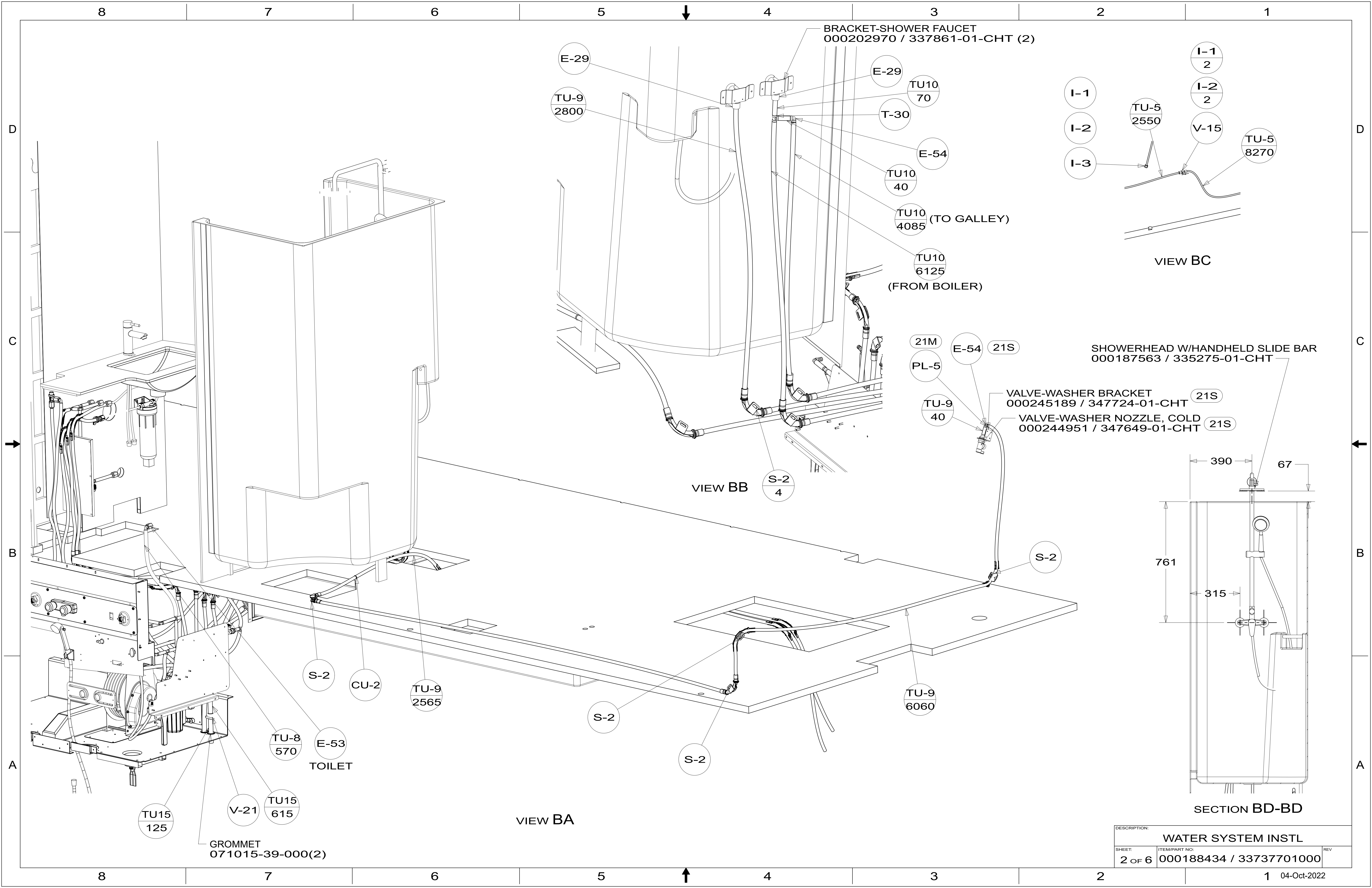


- NOTES:
1. PLASTIC FITTINGS TO BE SEALED WITH SEALANT 084456-01-000.
 2. TUBING TO BE INSTALLED WITH SUFFICIENT SLOPE TO PROVIDE DRAINAGE TO NEAREST VALVE.
 3. ALL TUBING TO BE SECURED AT 1200 INTERVALS MAXIMUM WITH CLAMP 010495-01-000 AND SCREW 000G67-10-12U OR EQUIVALENT.
 4. ADD TEFLON TAPE 010405-02-000.
 5. ADD PIPE WRAP (LADDER SCRAP 110157-02-000) INSULATION.
 6. LABEL HOT AND COLD SUPPLY TUBES AND TAPE FITTING TO TUBE BEFORE CABINET SET TO PREVENT MOVEMENT.
 7. ALL CRIMP FITTINGS TO 5/8" PEX TUBING REQUIRE 5/8" CLAMP 000156248 / 326669-01-000.
 8. ALL CRIMP FITTINGS TO 1/2" PEX TUBING REQUIRE 1/2" CLAMP 000156249 / 326670-01-000.
 9. ALL CRIMP FITTINGS TO 3/4" PEX TUBING REQUIRE 3/4" CLAMP 000156247 / 326668-01-000.

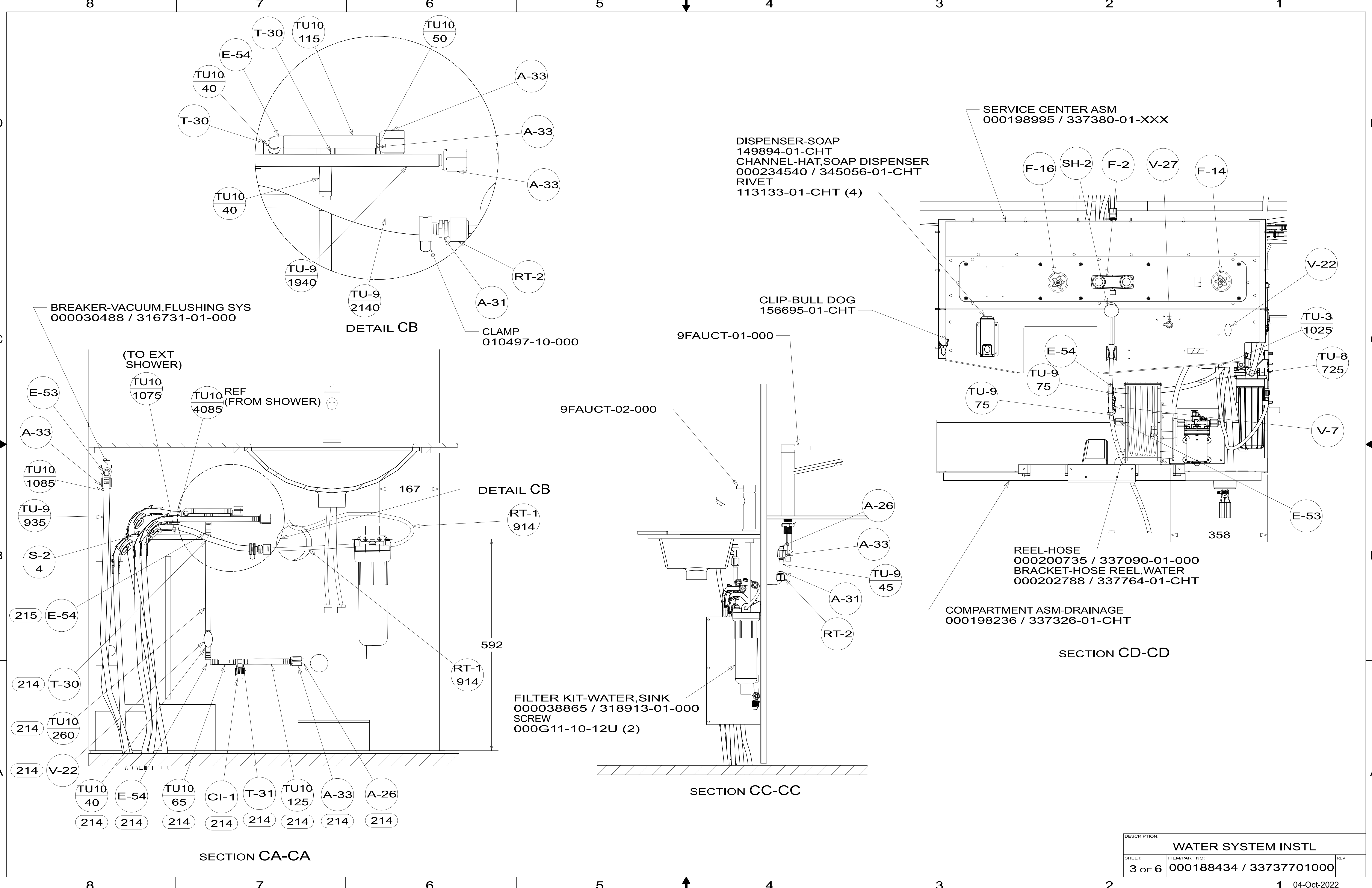
- (215) DISHWASHER WITHOUT
- (214) DISHWASHER DRAWER STYLE
- (21M) WASHER/DRYER PREP
- (21S) WASHER & DRYER-PAIR

X-X
FOR WATER CALLOUTS SEE DWG NO. 000209446 / 303369-01-000

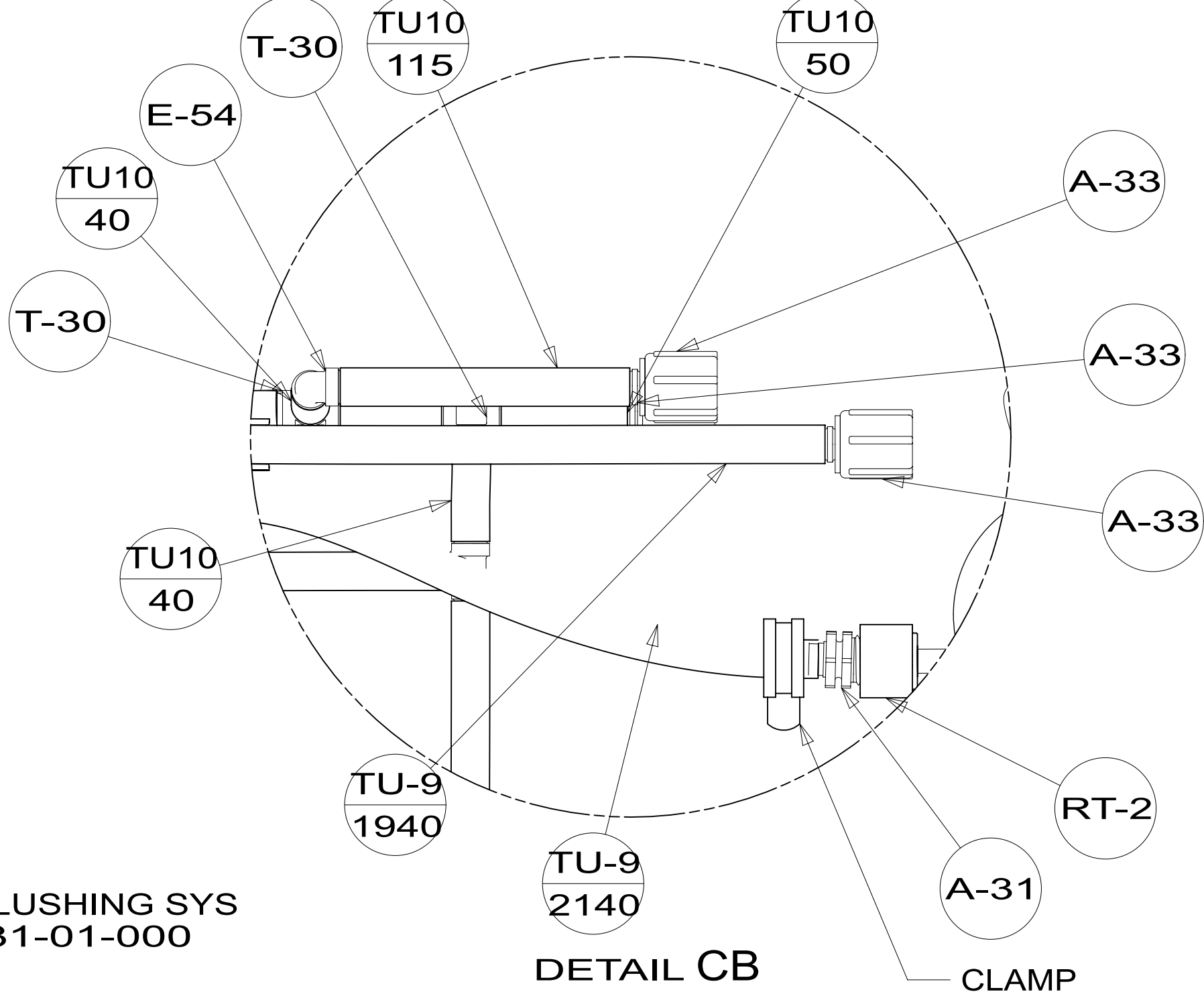
WINNEBAGO COPYRIGHT 2022 WINNEBAGO INDUSTRIES, INC.	
DSNR:	ALL DIMENSIONS ARE IN MILLIMETERS
DFTR:	
UNSPECIFIED TOLERANCES:	MATERIAL:
WHOLE DIM (X) : 3	
ONE-PLACE (X.X) : 1.5	
TWO-PLACE (X.XX) : 0.50	
ANGLE : 1°	
REFER TO ES0018 FOR FASTENER TIGHTENING GUIDELINES	WEIGHT: (LBS) FIRST USED: (REF) 21 N34N
DESCRIPTION: WATER SYSTEM INSTL	
SHEET: 1 OF 6	ITEM/PART NO.: 000188434 / 33737701000
REF: 1 04-Oct-2022	



DESCRIPTION:		
WATER SYSTEM INSTL		
SHEET:	ITEM/PART NO.:	REV
2 OF 6	000188434 / 33737701000	



BREAKER-VACUUM,FLUSHING SYS
000030488 / 316731-01-000



DETAIL CB

CLAMP
010497-10-000

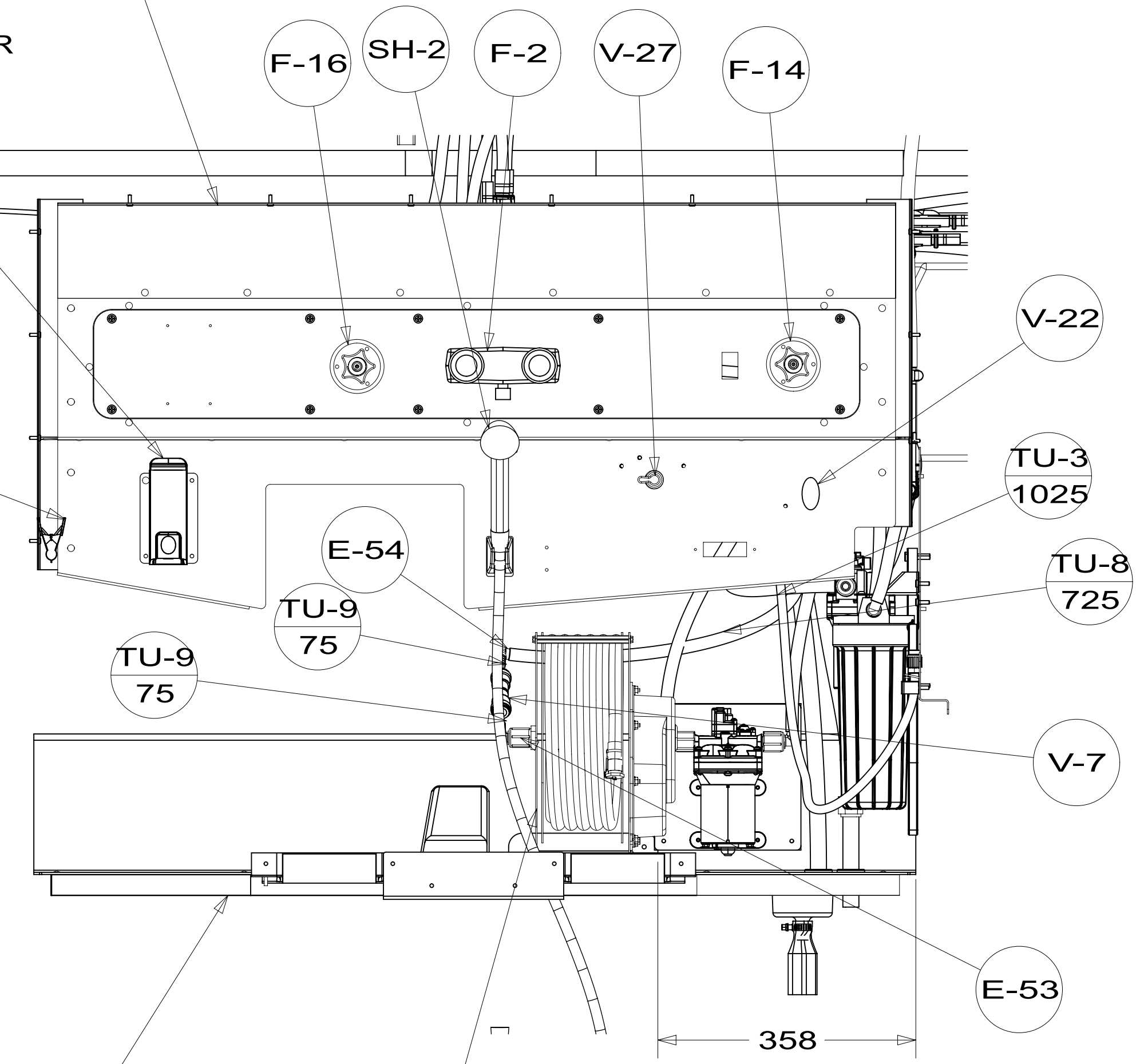
DISPENSER-SOAP
149894-01-CHT
CHANNEL-HAT,SOAP DISPENSER
000234540 / 345056-01-CHT
RIVET
113133-01-CHT (4)

CLIP-BULL DOG
156695-01-CHT

9FAUCT-01-000

9FAUCT-02-000

SERVICE CENTER ASM
000198995 / 337380-01-XXX



REEL-HOSE
000200735 / 337090-01-000
BRACKET-HOSE REEL,WATER
000202788 / 337764-01-CHT

COMPARTMENT ASM-DRAINAGE
000198236 / 337326-01-CHT

SECTION CD-CD

DETAIL CB

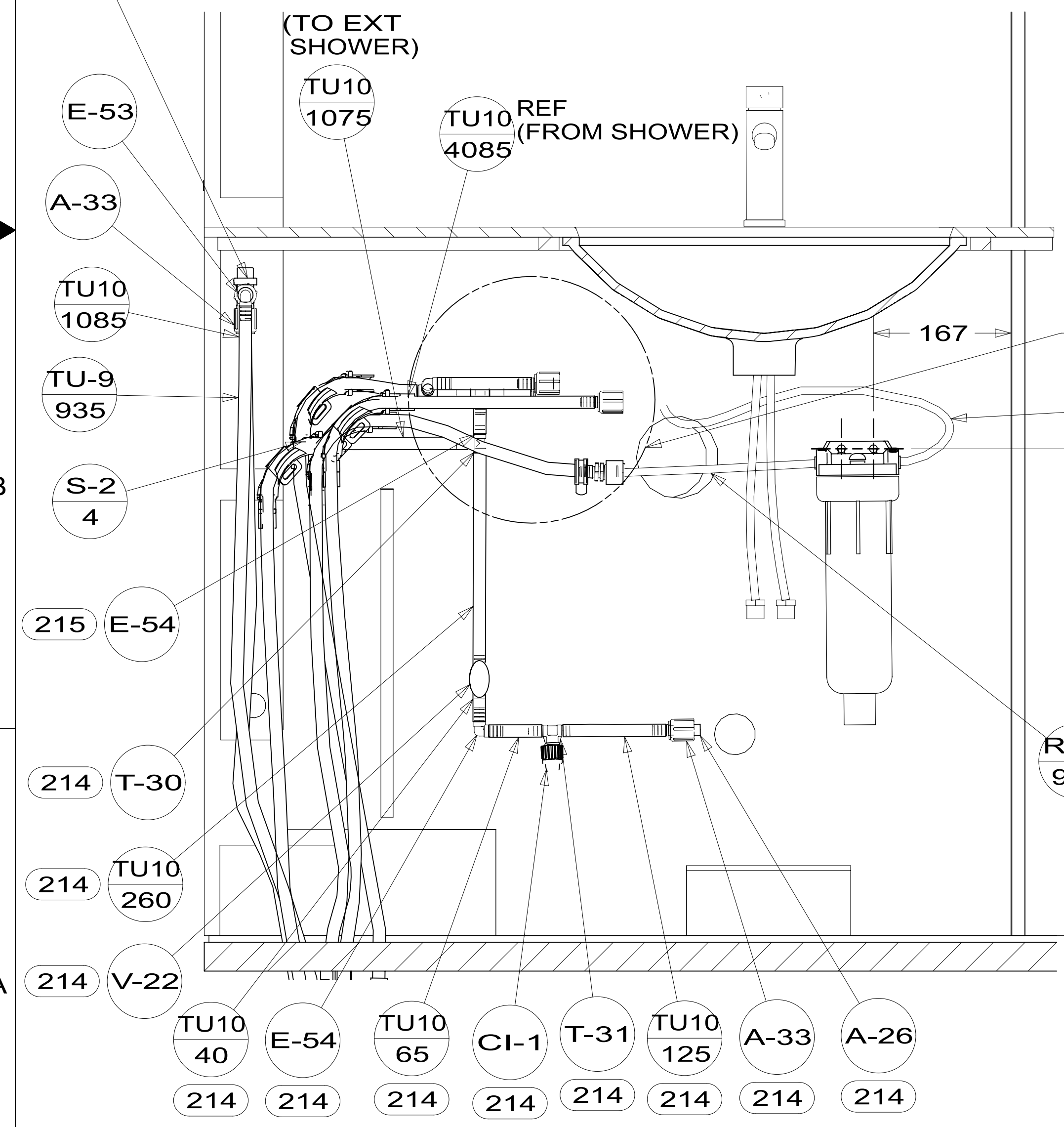
RT-1
914

592

RT-1
914

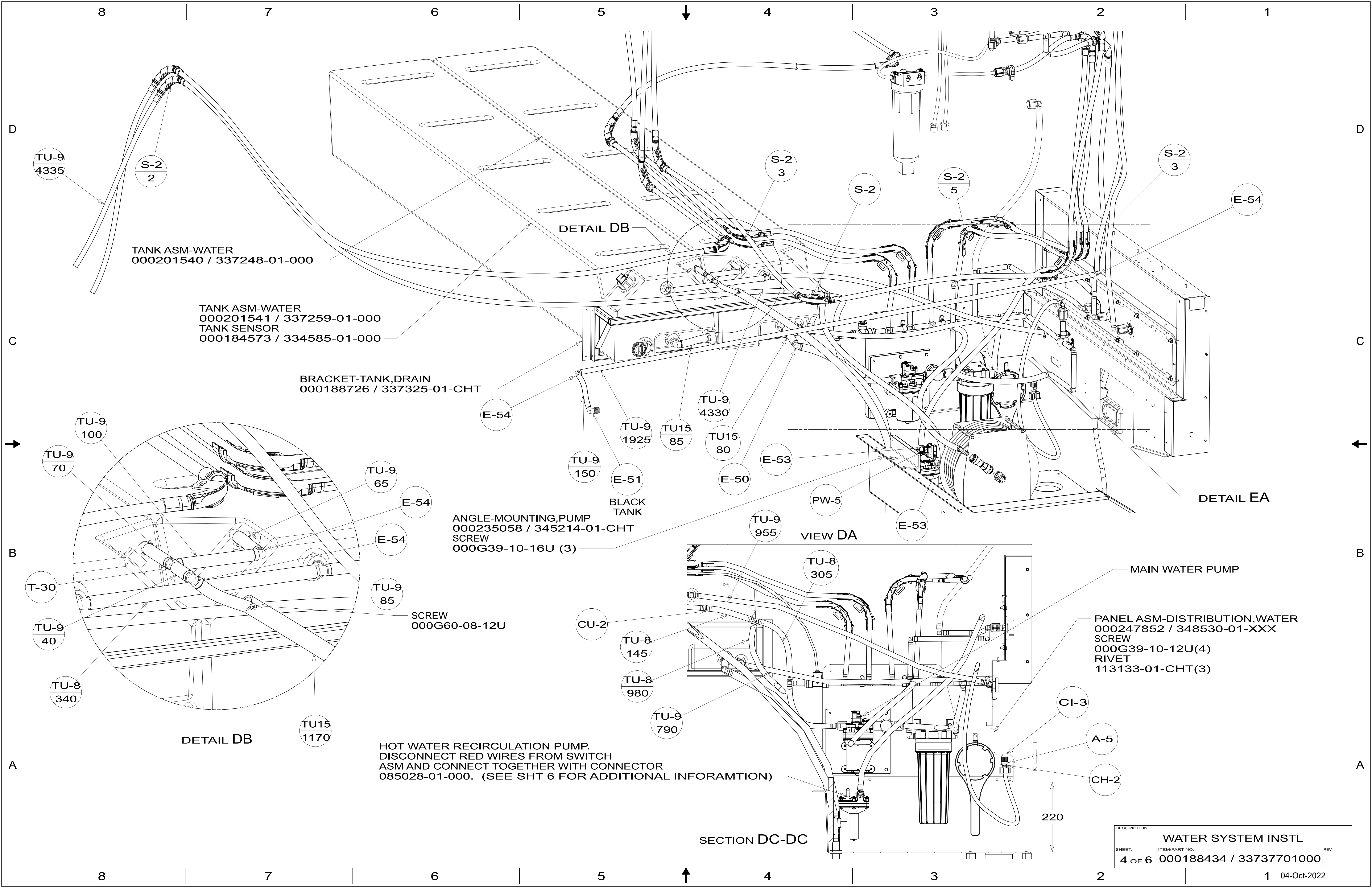
FILTER KIT-WATER,SINK
000038865 / 318913-01-000
SCREW
000G11-10-12U (2)

SECTION CC-CC

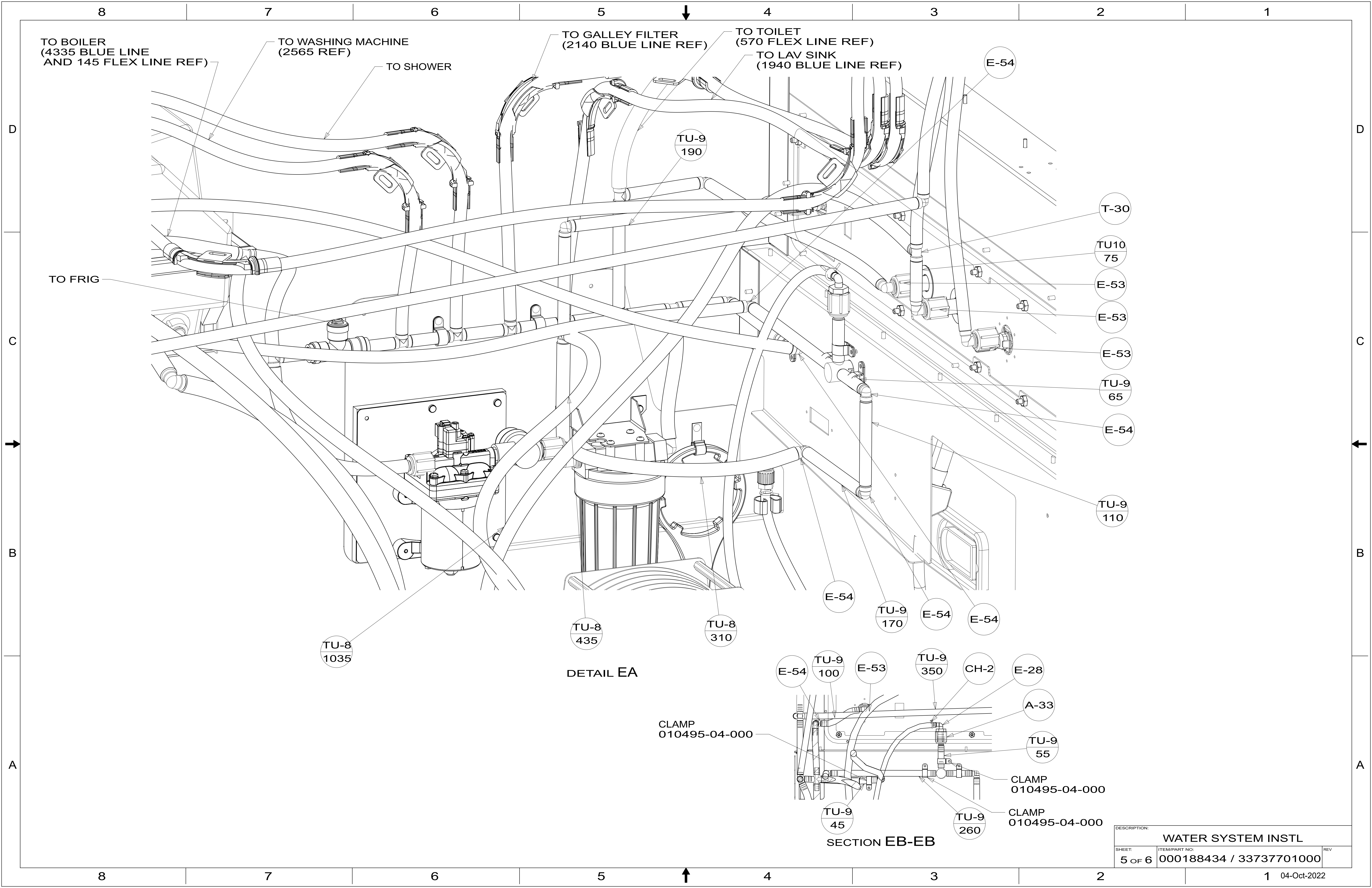


SECTION CA-CA

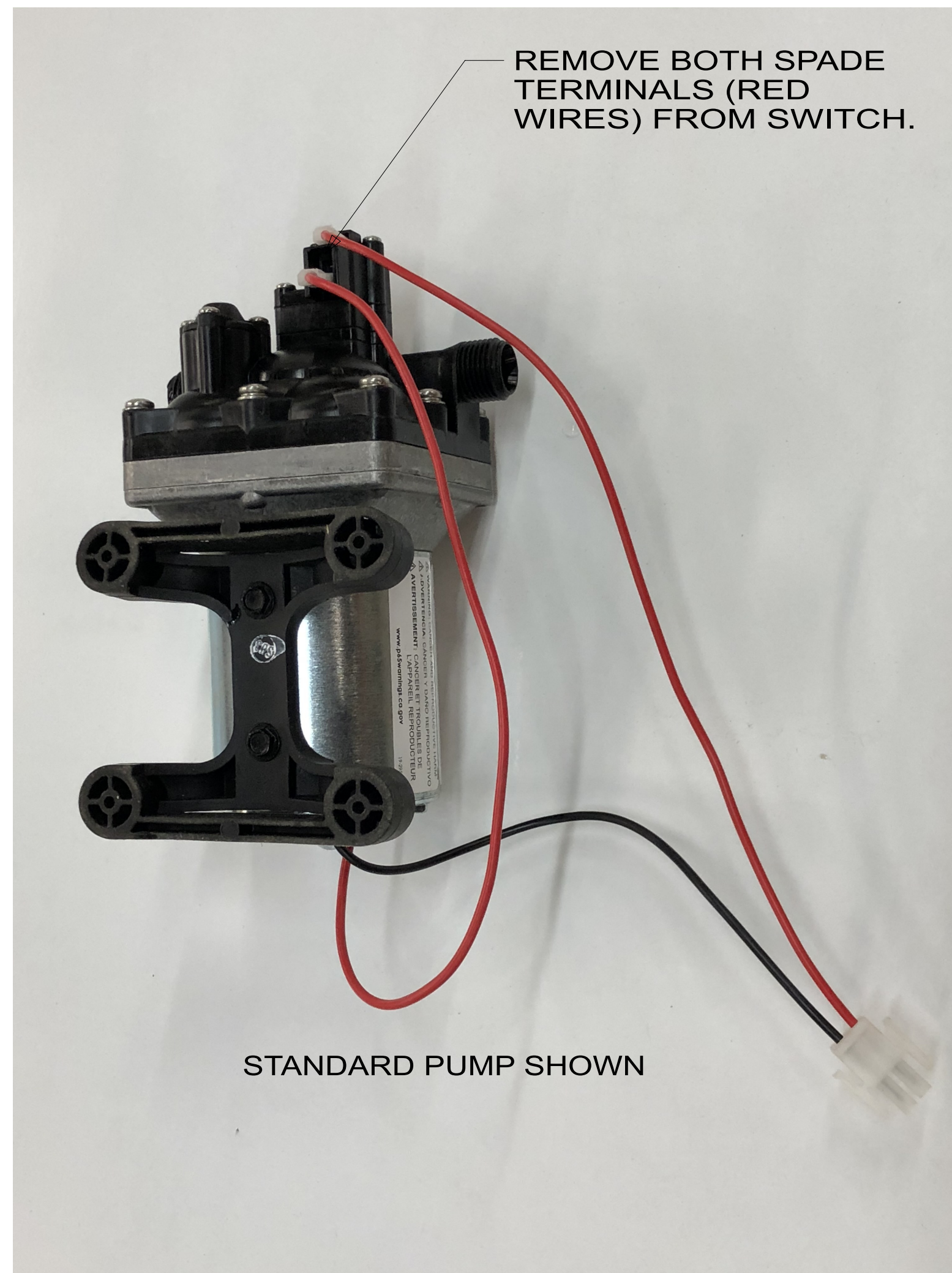
DESCRIPTION: WATER SYSTEM INSTL		
SHEET: 3 OF 6	ITEM/PART NO: 000188434 / 33737701000	REV



DESCRIPTION:		
WATER SYSTEM INSTL		
SHEET:	ITEM/PART NO.:	REV
4 OF 6	000188434 / 33737701000	



DESCRIPTION:		
WATER SYSTEM INSTL		
SHEET:	ITEM/PART NO:	REV
5 OF 6	000188434 / 33737701000	

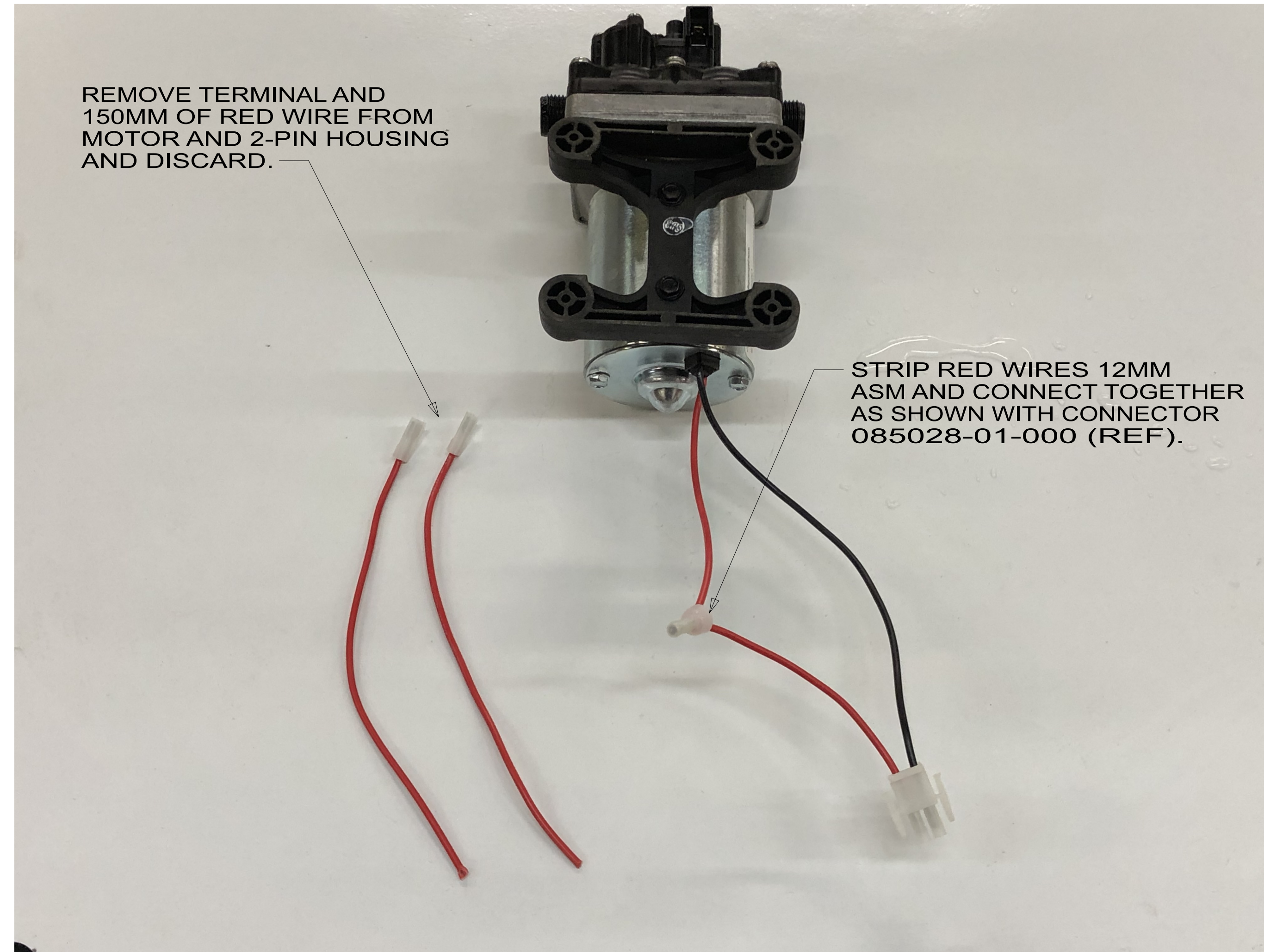


REMOVE BOTH SPADE
TERMINALS (RED
WIRES) FROM SWITCH.

STANDARD PUMP SHOWN

HOT WATER RECIRCULATION PUMP MODIFICATION

STEP 1



REMOVE TERMINAL AND
150MM OF RED WIRE FROM
MOTOR AND 2-PIN HOUSING
AND DISCARD.

STRIP RED WIRES 12MM
ASM AND CONNECT TOGETHER
AS SHOWN WITH CONNECTOR
085028-01-000 (REF).

HOT WATER RECIRCULATION PUMP MODIFICATION

STEP 2

DESCRIPTION:		
WATER SYSTEM INSTL		
SHEET:	ITEM/PART NO.:	REV
6 OF 6	000188434 / 33737701000	