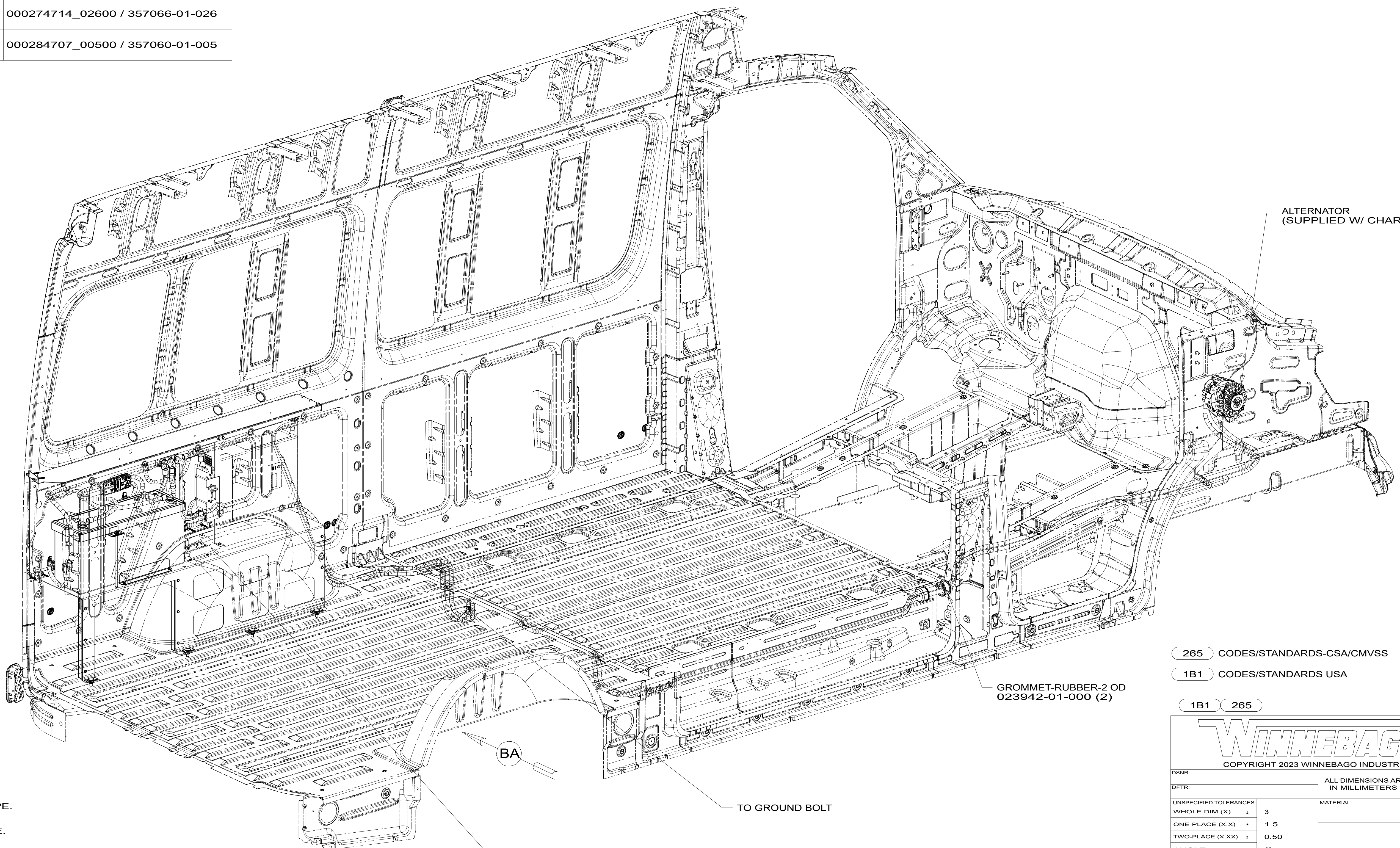


CABLE ASM-ALTERNATOR POS (RED)	000284739_07400 / 357070-01-074
CABLE ASM-ALTERNATOR NEG (BLK)	000284714_07300 / 357066-01-073
CABLE ASM-INVERTER FUSE (ORG)	000288368_00800 / 357492-01-008
CABLE ASM-INVERTER (ORG)	000288368_01200 / 357492-01-012
CABLE ASM-INVERTER GND (BLK)	000284631_00400 / 357056-01-004
CABLE ASM-BUSS BAR GND (BLK)	000274714_02600 / 357066-01-026
CABLE ASM-BREAKER	000284707_00500 / 357060-01-005

3
4



265 CODES/STANDARDS-CSA/CMVSS
 1B1 CODES/STANDARDS USA
 1B1 265

WINNEBAGO
 COPYRIGHT 2023 WINNEBAGO INDUSTRIES, INC.

DSNR:	ALL DIMENSIONS ARE IN MILLIMETERS	
DFTF:		
UNSPECIFIED TOLERANCES:	MATERIAL:	
WHOLE DIM (X) :	3	
ONE-PLACE (X.X) :	1.5	
TWO-PLACE (X.XX) :	0.50	
ANGLE :	1°	
REFER TO ES0018 FOR FASTENER TIGHTENING GUIDELINES	WEIGHT: (LBS)	FIRST USED:
		21 B44E
DESCRIPTION: BATTERY INSTL		
SHEET: 1 OF 5	ITEM/PART NO: 000290112 / 3581100100	REV:
REF:		1 29-Nov-2023

- 4 MARK WITH (2) WRAPS OF ORG TAPE.
 3 MARK WITH (1) WRAP OF ORG TAPE.
 2. SEE WIRING INSTL-CHASSIS FOR ADDITIONAL INFORMATION.
 1. AT MINIMUM ALL WIRES TO BE SUPPORTED AND SECURED PER CODE REQUIREMENTS. USE CLAMP 10495 OR 10497 OR WIRE TIE 8343 OR 108046 AND SCREW G67-XX-XXX OR G56-XX-XXX AS APPROPRIATE FOR INSTALLATION.

KIT-CHARGING SYSTEM, LITHIUM
 000289597 / 357910-01-000
 SCREW-PAN HEAD
 000G39-08-08U (4)

FOR ELECTRICAL TORQUE SPECIFICATIONS SEE DWG NO. 128783-01-000

FOR ELECTRICAL CALLOUTS SEE DWG 000228177 344479-01-000

D

D

C

C

B

B

A

A

8

7

6

5

4

3

2

1

8

7

6

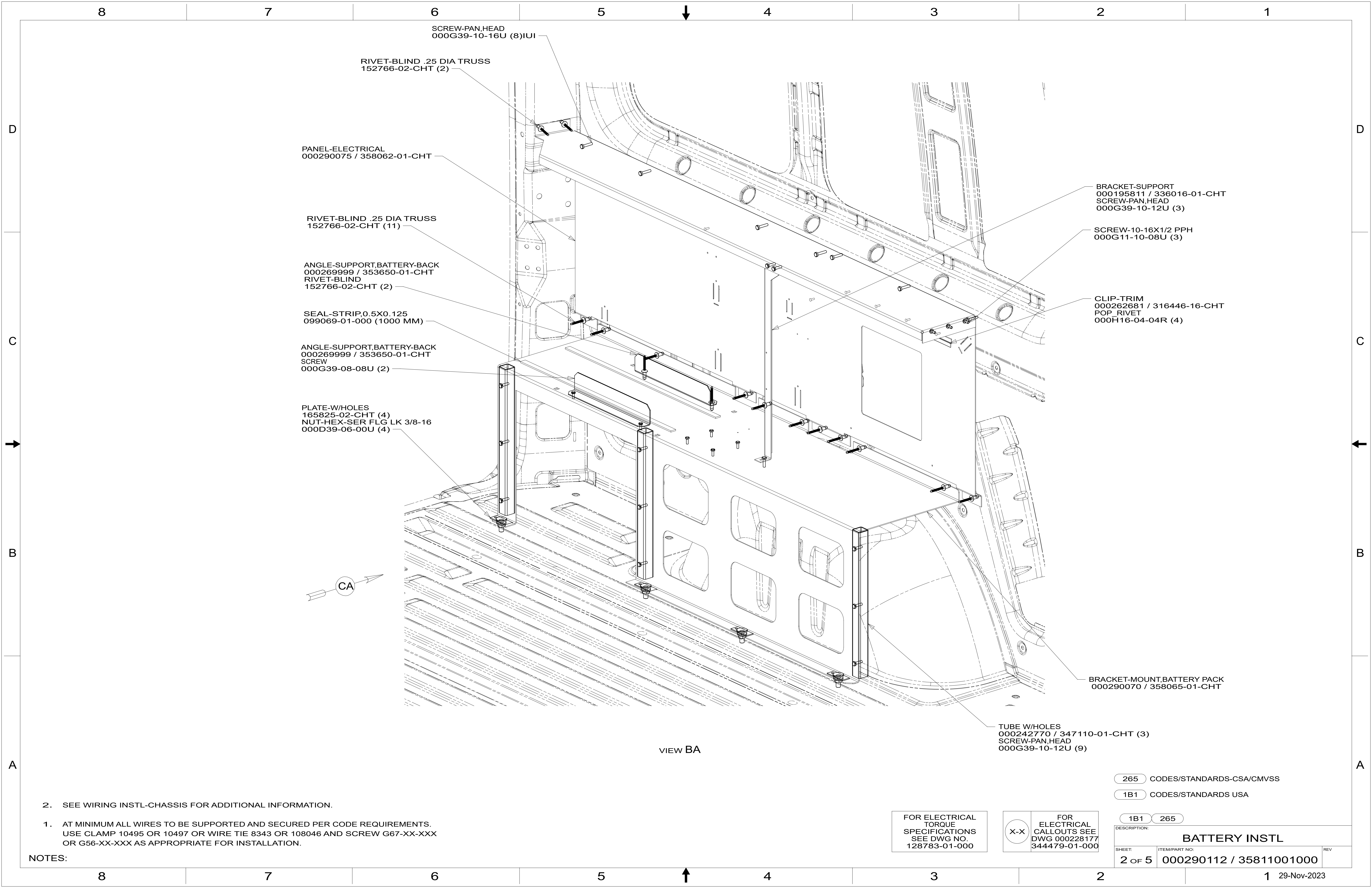
5

4

3

2

1



SCREW-PAN,HEAD
000G39-10-16U (8)IU1

RIVET-BLIND .25 DIA TRUSS
152766-02-CHT (2)

PANEL-ELECTRICAL
000290075 / 358062-01-CHT

RIVET-BLIND .25 DIA TRUSS
152766-02-CHT (11)

ANGLE-SUPPORT,BATTERY-BACK
000269999 / 353650-01-CHT
RIVET-BLIND
152766-02-CHT (2)

SEAL-STRIP,0.5X0.125
099069-01-000 (1000 MM)

ANGLE-SUPPORT,BATTERY-BACK
000269999 / 353650-01-CHT
SCREW
000G39-08-08U (2)

PLATE-W/HOLES
165825-02-CHT (4)
NUT-HEX-SER FLG LK 3/8-16
000D39-06-00U (4)

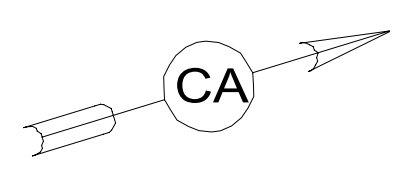
BRACKET-SUPPORT
000195811 / 336016-01-CHT
SCREW-PAN,HEAD
000G39-10-12U (3)

SCREW-10-16X1/2 PPH
000G11-10-08U (3)

CLIP-TRIM
000262681 / 316446-16-CHT
POP_RIVET
000H16-04-04R (4)

BRACKET-MOUNT,BATTERY PACK
000290070 / 358065-01-CHT

TUBE W/HOLES
000242770 / 347110-01-CHT (3)
SCREW-PAN,HEAD
000G39-10-12U (9)



VIEW BA

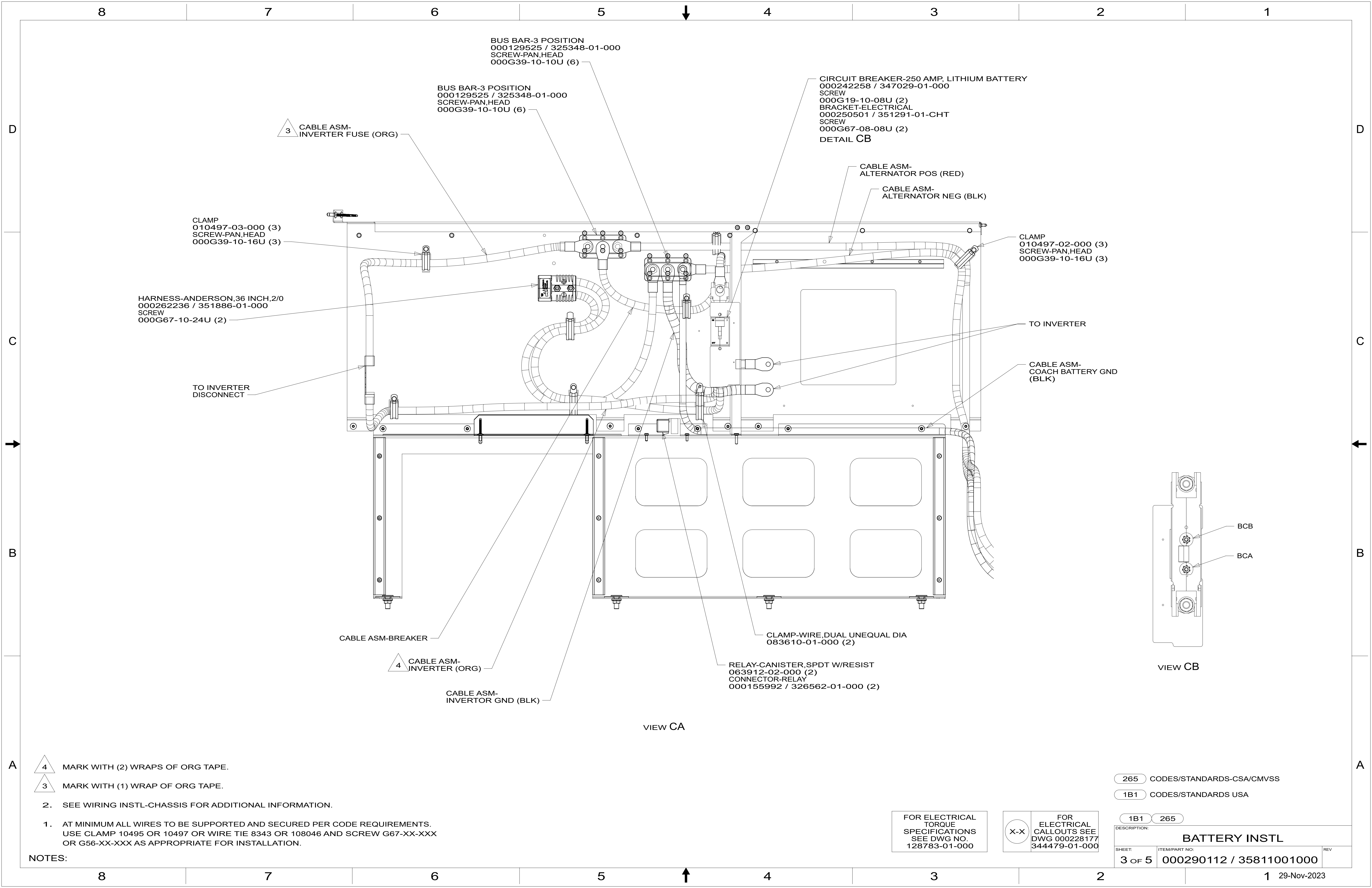
- NOTES:
- AT MINIMUM ALL WIRES TO BE SUPPORTED AND SECURED PER CODE REQUIREMENTS. USE CLAMP 10495 OR 10497 OR WIRE TIE 8343 OR 108046 AND SCREW G67-XX-XXX OR G56-XX-XXX AS APPROPRIATE FOR INSTALLATION.
 - SEE WIRING INSTL-CHASSIS FOR ADDITIONAL INFORMATION.

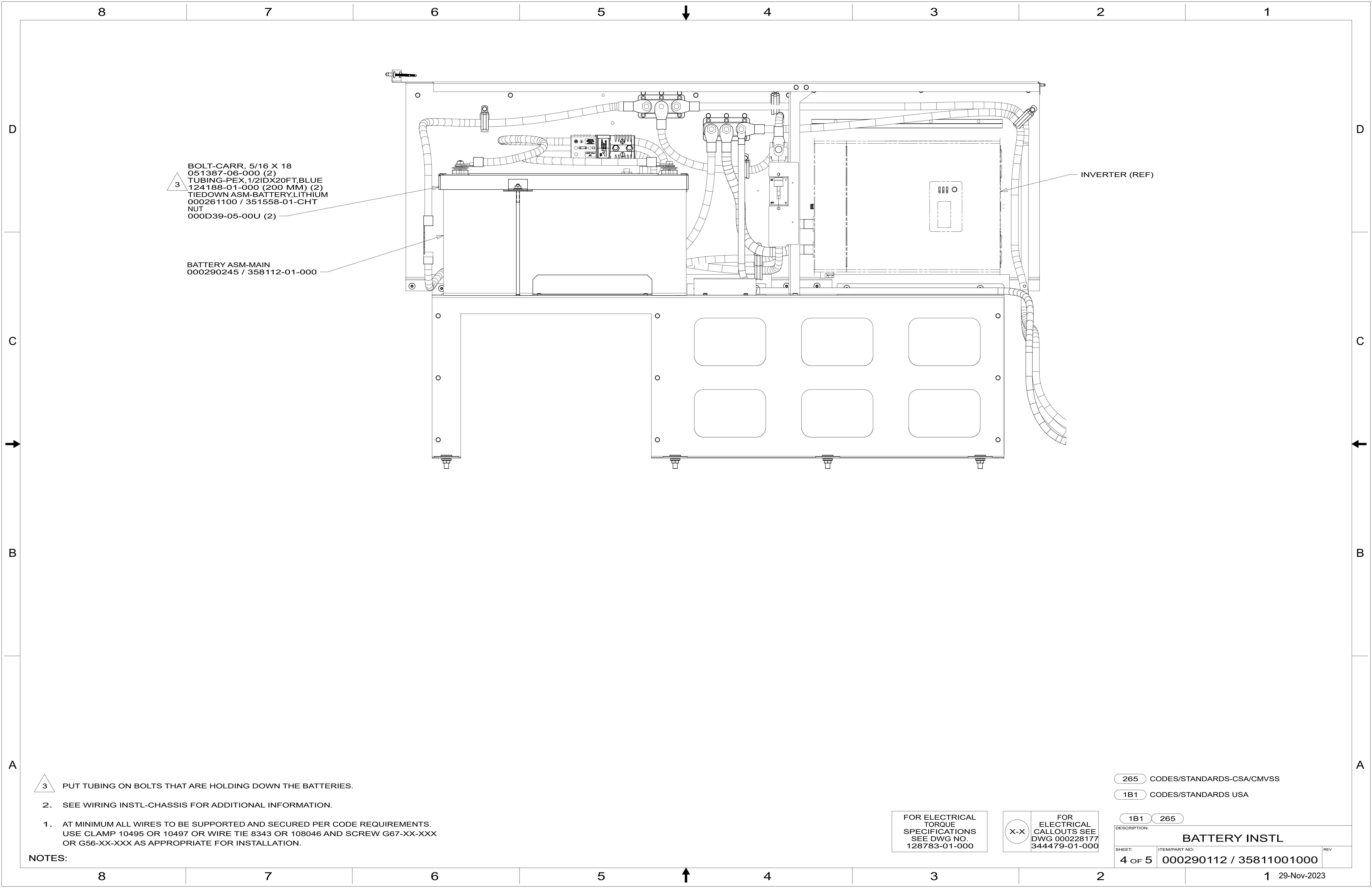
FOR ELECTRICAL TORQUE SPECIFICATIONS SEE DWG NO. 128783-01-000

FOR ELECTRICAL CALLOUTS SEE DWG 000228177 344479-01-000

265 CODES/STANDARDS-CSA/CMVSS
1B1 CODES/STANDARDS USA

DESCRIPTION:		1B1 265	
BATTERY INSTL			
SHEET:	ITEM/PART NO.:	REV	
2 OF 5	000290112 / 35811001000		





3
 BOLT-CARR, 5/16 X 18
 051387-06-000 (2)
 TUBING-PEX, 1/2IDX20FT,BLUE
 124188-01-000 (200 MM) (2)
 TIEDOWN ASM-BATTERY,LITHIUM
 000261100 / 351558-01-CHT
 NUT
 000D39-05-00U (2)

BATTERY ASM-MAIN
 000290245 / 358112-01-000

INVERTER (REF)

3 PUT TUBING ON BOLTS THAT ARE HOLDING DOWN THE BATTERIES.

2. SEE WIRING INSTL-CHASSIS FOR ADDITIONAL INFORMATION.

1. AT MINIMUM ALL WIRES TO BE SUPPORTED AND SECURED PER CODE REQUIREMENTS.
 USE CLAMP 10495 OR 10497 OR WIRE TIE 8343 OR 108046 AND SCREW G67-XX-XXX
 OR G56-XX-XXX AS APPROPRIATE FOR INSTALLATION.

NOTES:

265 CODES/STANDARDS-CSA/CMVSS

1B1 CODES/STANDARDS USA

1B1 265

FOR ELECTRICAL
 TORQUE
 SPECIFICATIONS
 SEE DWG NO.
 128783-01-000

FOR ELECTRICAL
 CALLOUTS SEE
 DWG 000228177
 344479-01-000

DESCRIPTION:		
BATTERY INSTL		
SHEET:	ITEM/PART NO.:	REV
4 OF 5	000290112 / 35811001000	

Balmar recommends the following torque specifications when installing a Balmar “XT MS” Series Alternator Charging System.

Balmar XT-MS-170 and XT-MS-250 Torque Specifications							
IDENTIFIER	Ref.	DESCRIPTION	LOCATION	TORQUE VALUE	CONNECTIONS MADE AT LOCATION		
1	B+	Nut	E	M8-1.25 x 13mm	Alternator rear	14 ft-lb (19Nm)	Battery(+) cable to 250A breaker. Breaker torque is not specified by Balmar, refer to OEM for Specification
1		Temp. Sensor Screw	F	M6-1.0x12, 10mm head	Alternator rear	75 in-lb (8.5Nm)	Alt. Temp. Sensor is plugged into connector on MC-614/618 pins 5 & 6
1		Alternator Mounting Bolts	G, H	(MS) M10-1.5x100, 17mm head	2 Mounting Bolt Locations	45 ft-lb (61Nm)	N/A

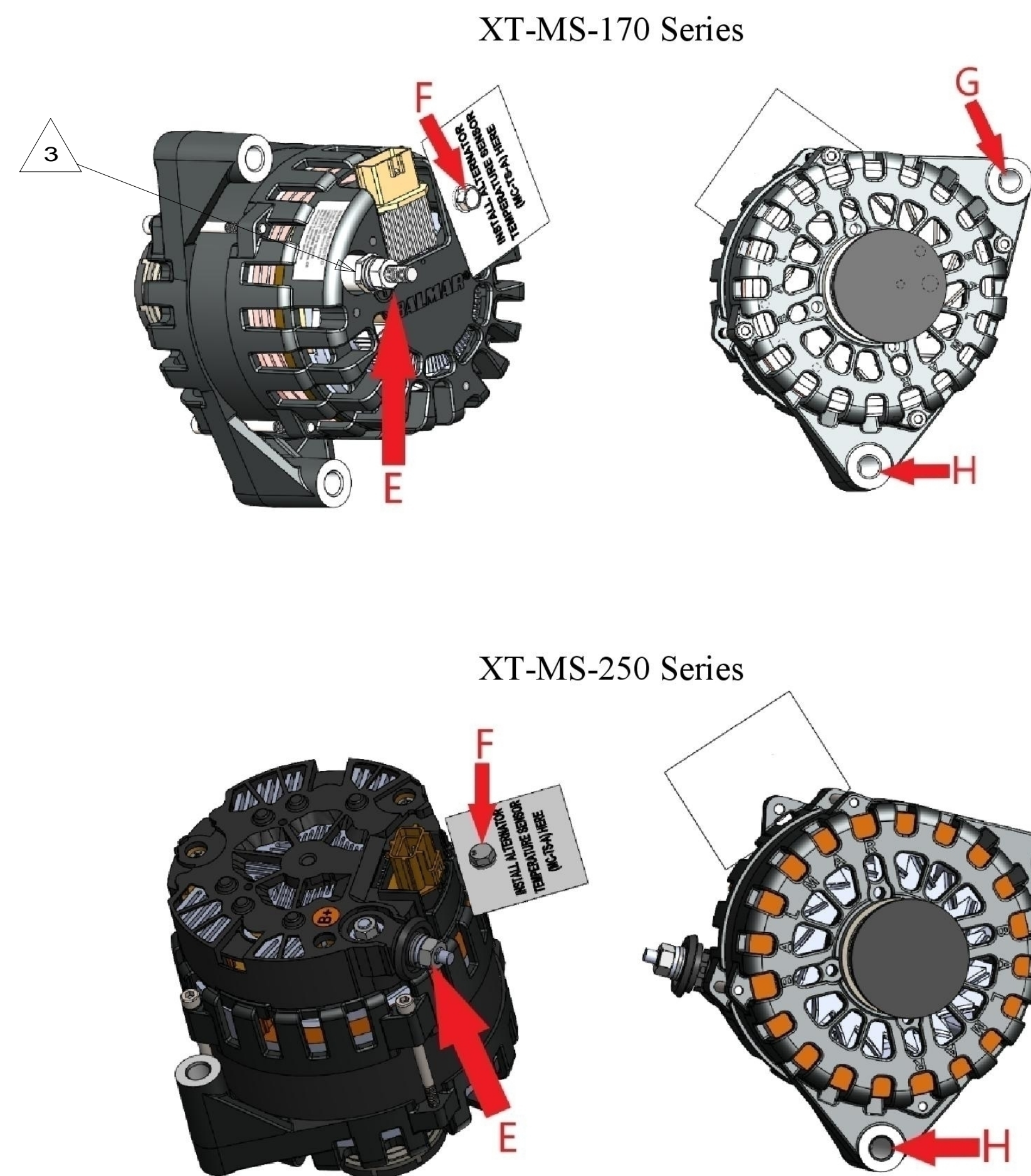
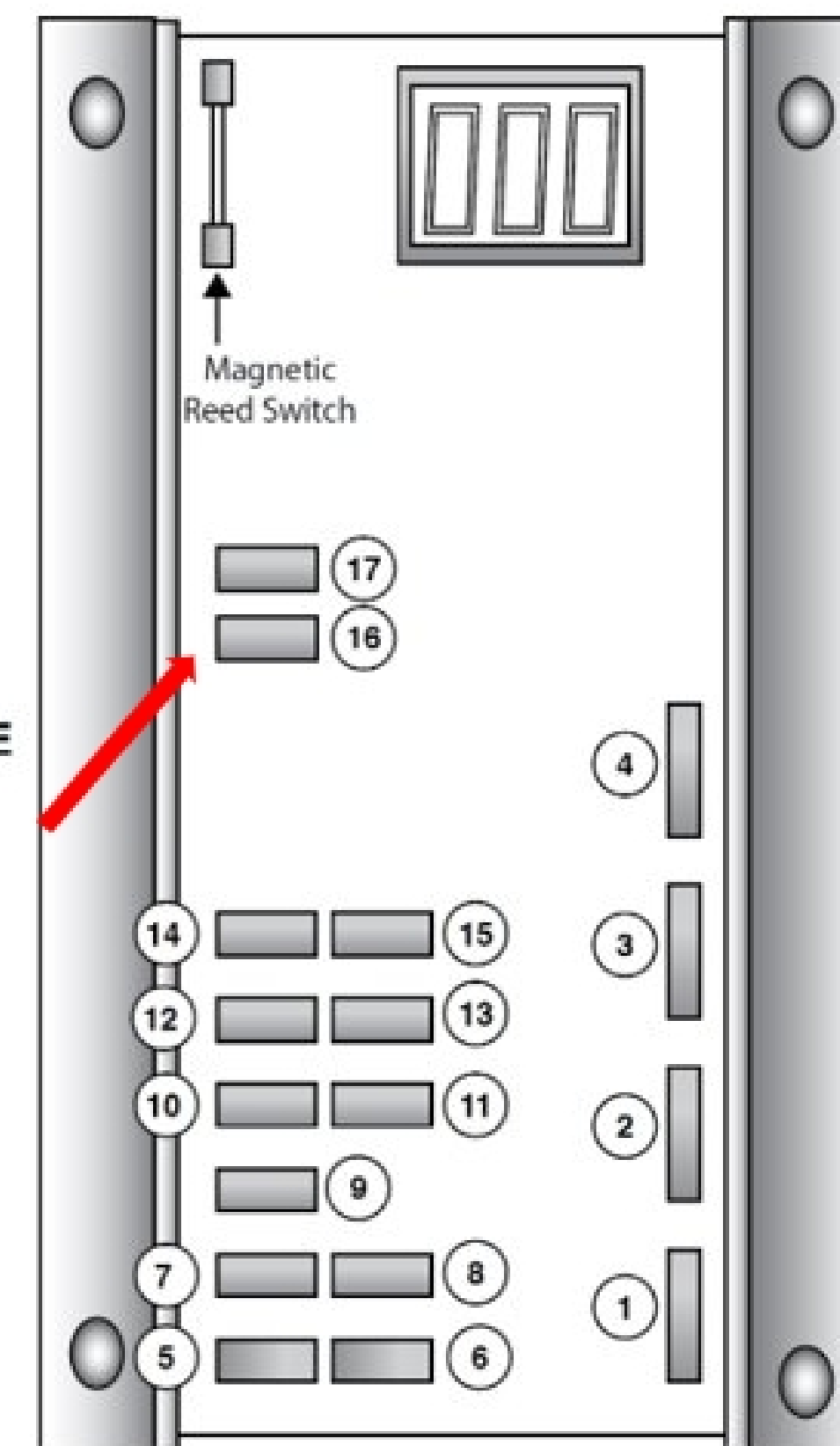


Image 1

1. GROUND INPUT
2. POWER INPUT
3. IGNITION INPUT
4. FIELD OUTPUT
5. ALT. TEMP. (-)
6. ALT. TEMP. (+)
7. BAT. TEMP. #1 (-)
8. BAT. TEMP. #1 (+)
9. POSITIVE VOLTAGE SENSE
10. SmartLink™ TX
11. SmartLink™ RX
12. STATOR IN
13. TACHOMETER OUT
14. BAT. #2 TEMP. (-)
15. BAT. #2 TEMP. (+)
16. AUX. #1 LAMP
17. DASH LAMP



Pin 16 is the alternator fault lockout trigger circuit

- NOTES:
- 3 USE A THIN 17 MM BACKER WRENCH TO REMOVE OR TORQUE THE POSITIVE CABLE TO THE POST.
 2. NEVER HANG THE ALTERNATOR BY THE CABLES TO AVOID DAMAGING THE ALTERNATOR.
 - 1 APPLY BLUE LOCTITE 243 355628-01-000 TO THREADS.

FOR ELECTRICAL TORQUE SPECIFICATIONS SEE DWG NO. 128783-01-000

FOR ELECTRICAL CALLOUTS SEE DWG 000228177 344479-01-000

265 CODES/STANDARDS-CSA/CMVSS

1B1 CODES/STANDARDS USA

1B1 265

DESCRIPTION: BATTERY INSTL

SHEET: 5 OF 5 ITEM/PART NO.: 000290112 / 3581100100 REV