

8 7 6 5 4 3 2 1

D

D

C

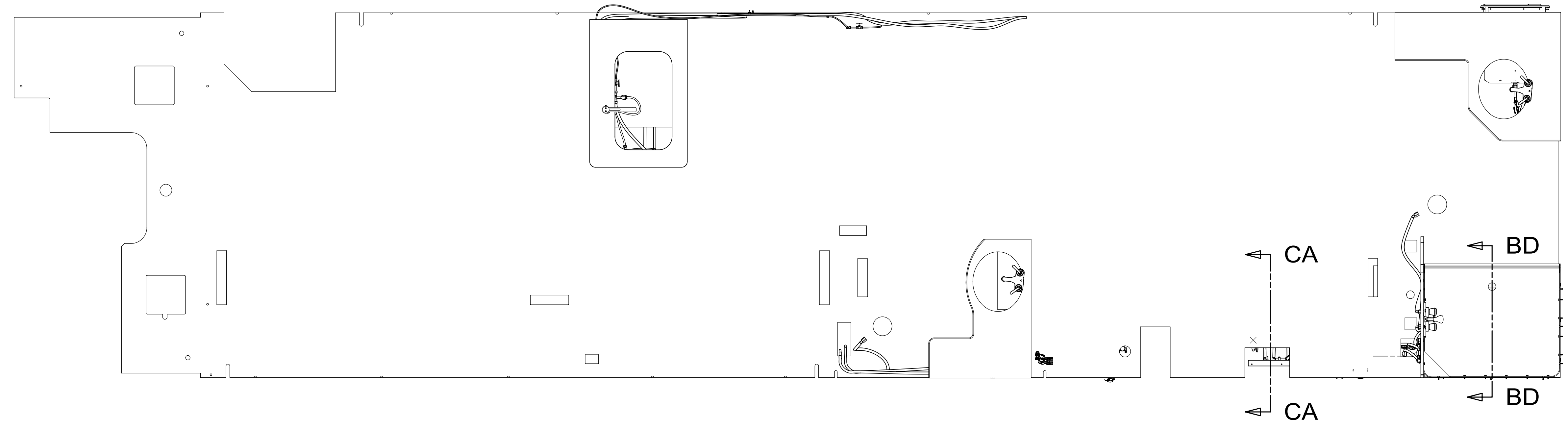
C

B

B

A

A



- 10 USE WITH FAUCET 000221451 / 342498-01-CHT.
- 9. ALL CRIMP FITTINGS TO 3/4" PEX TUBING REQUIRE 3/4" CLAMP 000156247 / 326668-01-000.
- 8. ALL CRIMP FITTINGS TO 1/2" PEX TUBING REQUIRE 1/2" CLAMP 000156249 / 326670-01-000.
- 7. ALL CRIMP FITTINGS TO 5/8" FLEX TUBING REQUIRE 5/8" CLAMP 000156248 / 326669-01-000.
- 6 LABEL HOT AND COLD SUPPLY TUBES AND TAPE FITTING TO TUBE BEFORE CABINET SET TO PREVENT MOVEMENT.
- 5 ADD PIPE WRAP (LADDER SCRAP 110157-02-000) INSULATION.
- 4 ADD TEFLON TAPE 010405-02-000.
- 3. ALL TUBING TO BE SECURED AT 1200 INTERVALS MAXIMUM WITH CLAMP 010495-01-000 AND SCREW 000G67-10-12U OR EQUIVALENT.
- 2. TUBING TO BE INSTALLED WITH SUFFICIENT SLOPE TO PROVIDE DRAINAGE TO NEAREST VALVE.
- 1. PLASTIC FITTINGS TO BE SEALED WITH SEALANT 084456-01-000.

NOTES:

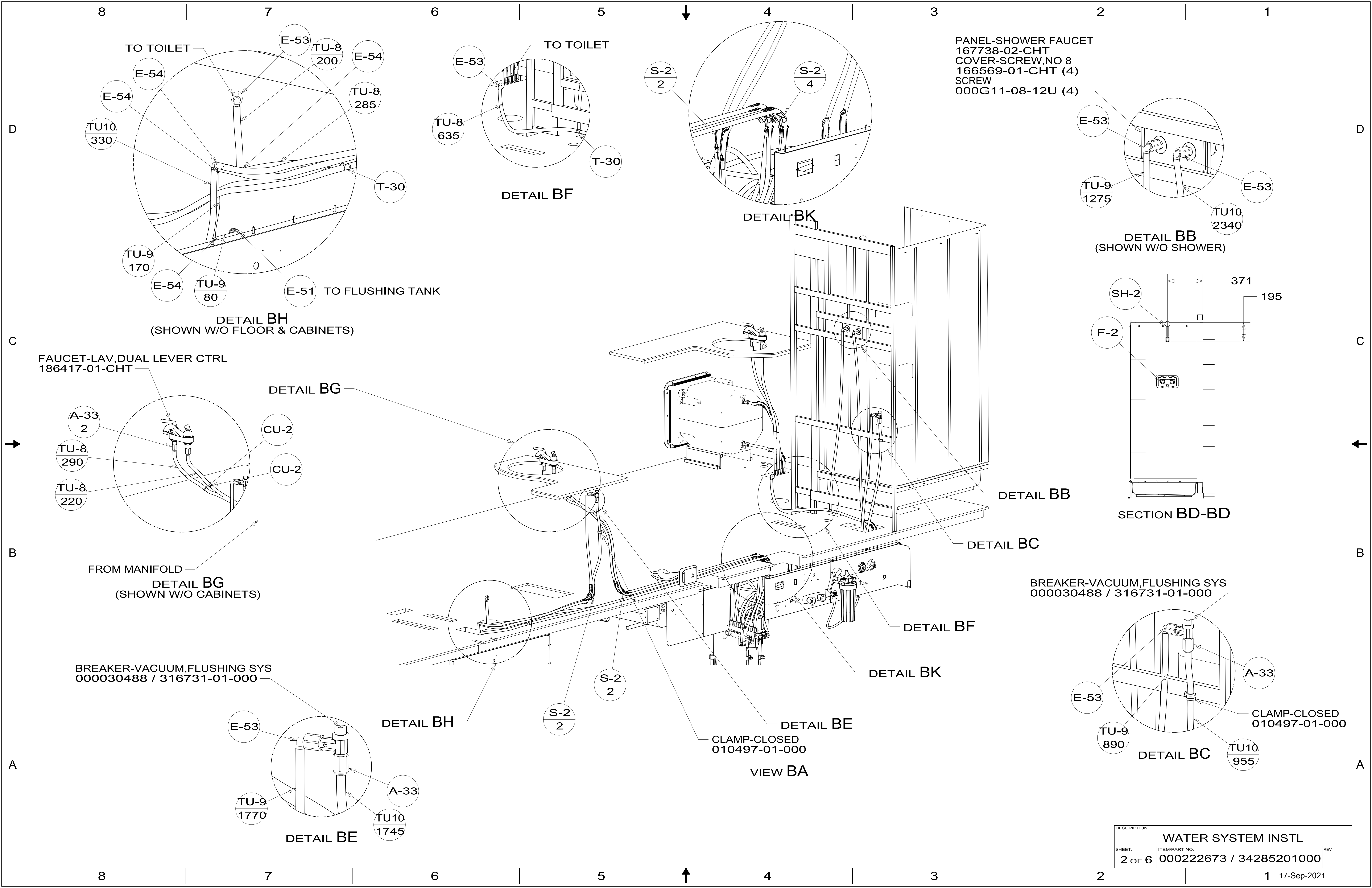
- 54E WASHER/DRYER COMBO
- 21M WASHER/DRYER PREP



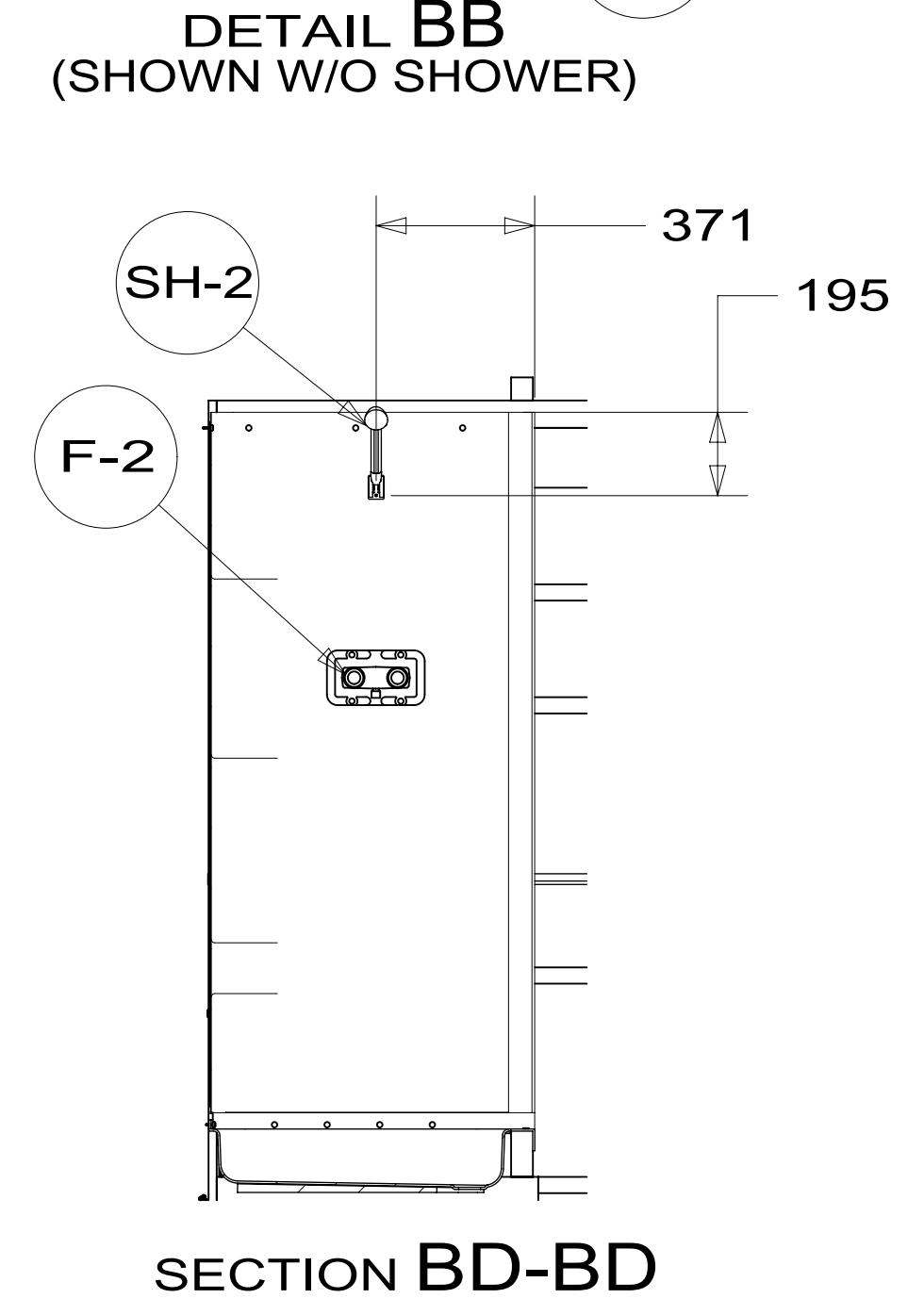
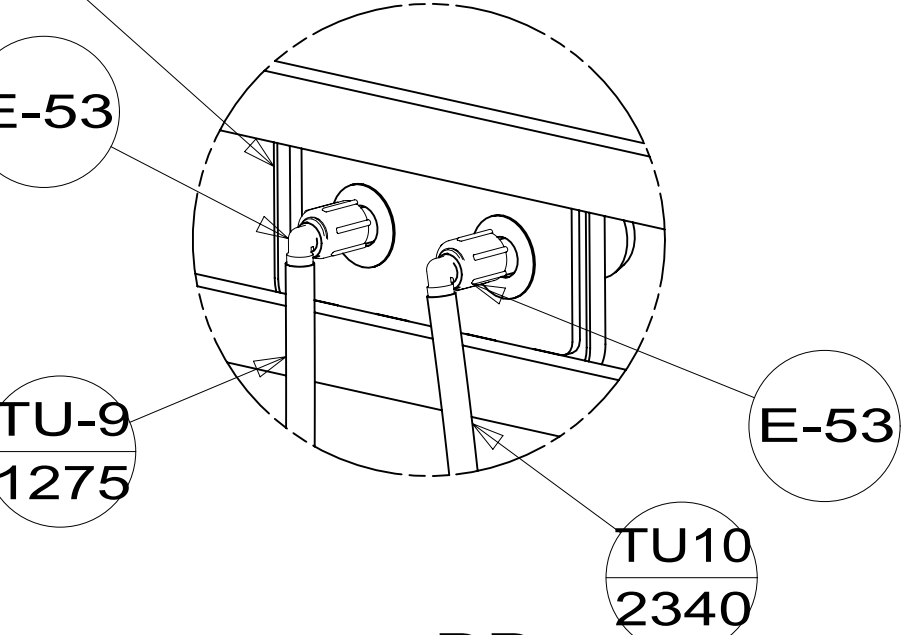
DSNR:		ALL DIMENSIONS ARE IN MILLIMETERS	
DIFTR:		MATERIAL:	
UNSPECIFIED TOLERANCES:			
WHOLE DIM (X)	: 3		
ONE-PLACE (X.X)	: 1.5		
TWO-PLACE (X.XX)	: 0.50		
ANGLE	: 1°		
REFER TO ES0018 FOR FASTENER TIGHTENING GUIDELINES		WEIGHT: (LBS)	FIRST USED: (REF)
			21 F36Z
DESCRIPTION: WATER SYSTEM INSTL			
SHEET:	ITEM/PART NO:	REV	
1 OF 6	000222673 / 34285201000		

X-X  
FOR WATER CALLOUTS SEE DWG NO. 000209446 / 303369-01-000

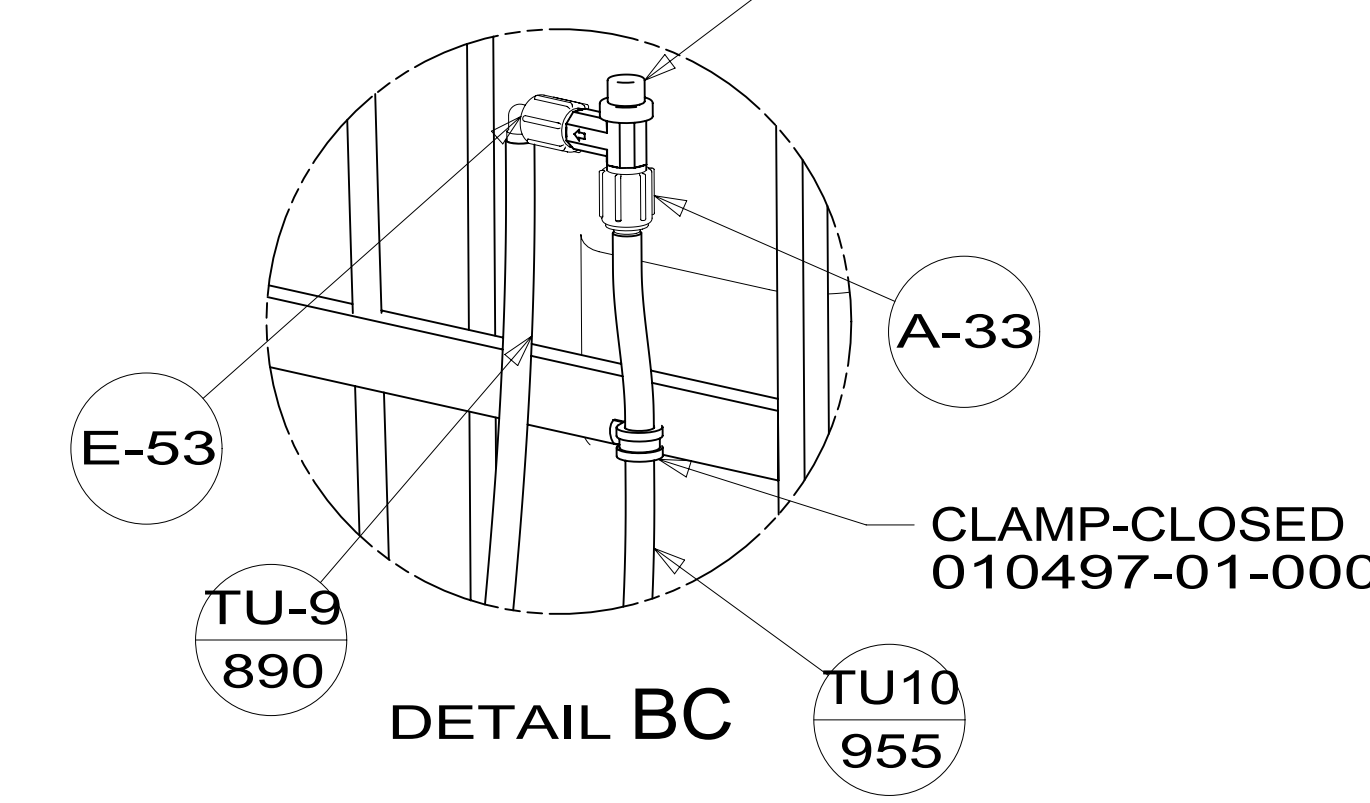
8 7 6 5 4 3 2 1



PANEL-SHOWER FAUCET  
 167738-02-CHT  
 COVER-SCREW,NO 8  
 166569-01-CHT (4)  
 SCREW  
 000G11-08-12U (4)



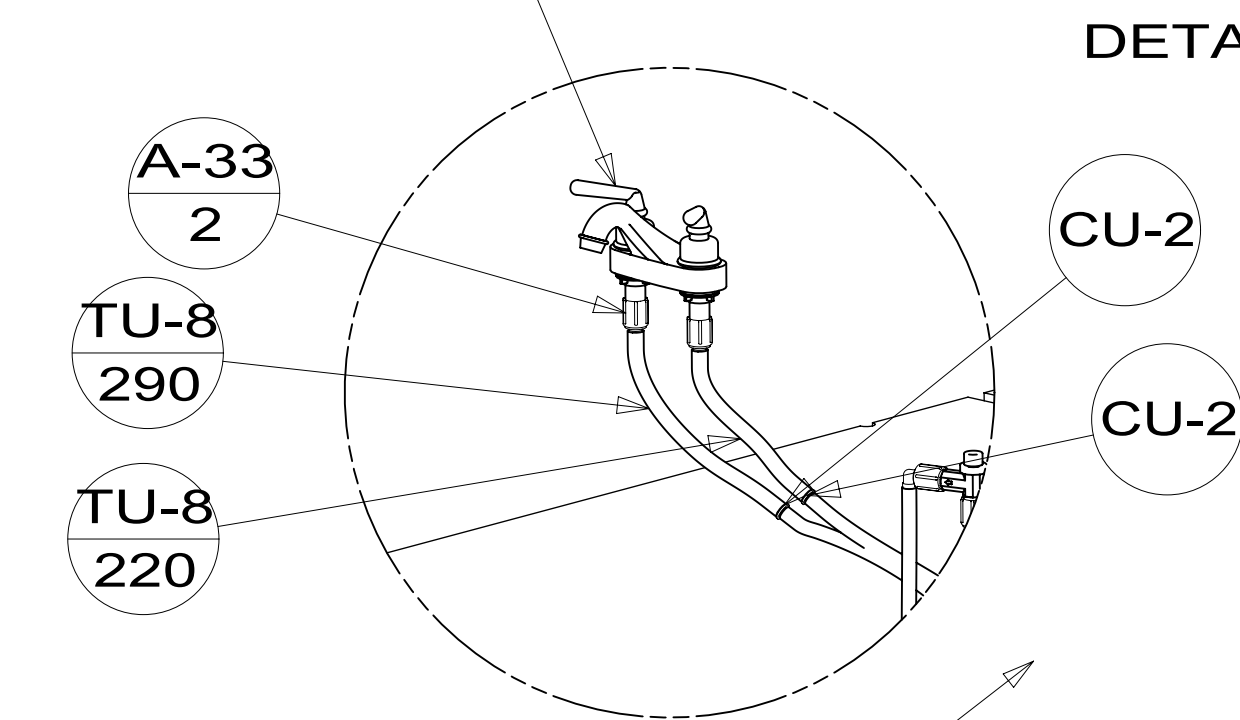
BREAKER-VACUUM,FLUSHING SYS  
 000030488 / 316731-01-000



DESCRIPTION: <b>WATER SYSTEM INSTL</b>		
SHEET: 2 OF 6	ITEM/PART NO: 000222673 / 34285201000	REV
		1 17-Sep-2021

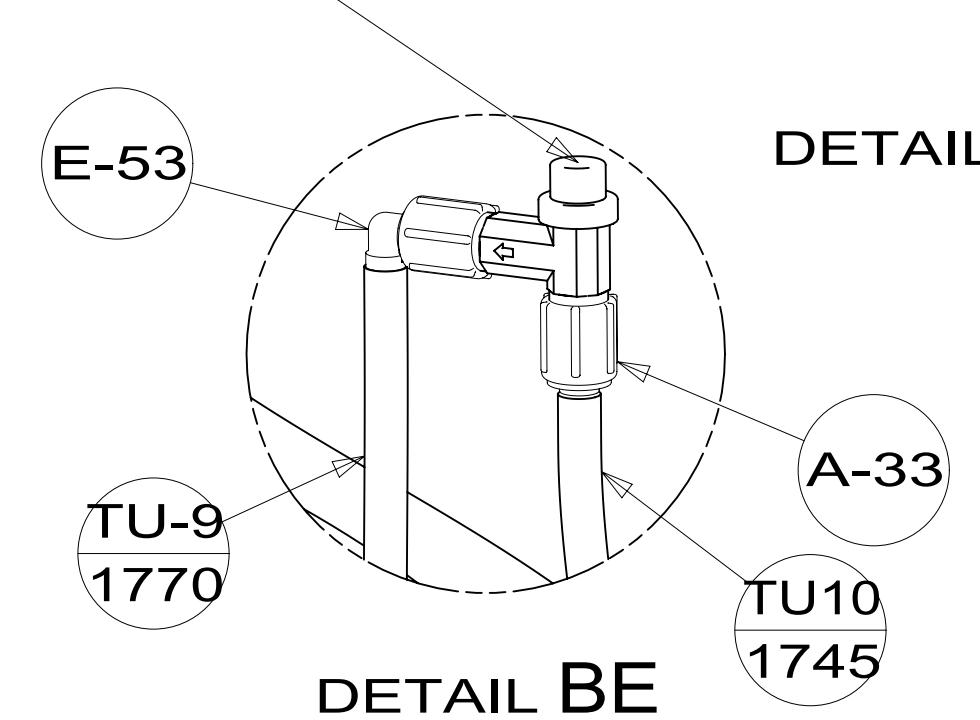
**DETAIL BH**  
 (SHOWN W/O FLOOR & CABINETS)

FAUCET-LAV,DUAL LEVER CTRL  
 186417-01-CHT



FROM MANIFOLD  
**DETAIL BG**  
 (SHOWN W/O CABINETS)

BREAKER-VACUUM,FLUSHING SYS  
 000030488 / 316731-01-000



**DETAIL BE**

CLAMP-CLOSED  
 010497-01-000

**VIEW BA**

SH-2 371 195

F-2

**SECTION BD-BD**

**DETAIL BB**

**DETAIL BC**

**DETAIL BF**

**DETAIL BK**

**DETAIL BE**

**DETAIL BH**

**DETAIL BF**

**DETAIL BK**

E-53

TU-9 1275

E-53

TU10 2340

SH-2

F-2

SH-2

F-2

SH-2

F-2

E-53

TU-9 890

A-33

CLAMP-CLOSED  
 010497-01-000

TU10 955

S-2 2

S-2 2

S-2 2

E-53

TU-8 635

T-30

S-2 2

S-2 4

TO TOILET

E-53

TU-8 200

E-54

TU-8 285

T-30

TU-9 170

E-54

TU-9 80

E-51

TO FLUSHING TANK

**DETAIL BH**  
 (SHOWN W/O FLOOR & CABINETS)

**DETAIL BG**

CU-2

CU-2

**DETAIL BG**  
 (SHOWN W/O CABINETS)

E-53

TU-9 1770

DETAIL BH

S-2 2

S-2 2

DETAIL BE

**DETAIL BF**

**DETAIL BK**

**DETAIL BE**

**DETAIL BH**

**DETAIL BF**

**DETAIL BK**

E-53

TU-9 1275

E-53

TU10 2340

SH-2

F-2

SH-2

F-2

SH-2

F-2

E-53

TU-9 890

A-33

CLAMP-CLOSED  
 010497-01-000

TU10 955

S-2 2

S-2 2

S-2 2

E-53

TU-8 635

T-30

S-2 2

S-2 4

TO TOILET

E-53

TU-8 200

E-54

TU-8 285

T-30

TU-9 170

E-54

TU-9 80

E-51

TO FLUSHING TANK

**DETAIL BH**  
 (SHOWN W/O FLOOR & CABINETS)

**DETAIL BG**

CU-2

CU-2

**DETAIL BG**  
 (SHOWN W/O CABINETS)

E-53

TU-9 1770

DETAIL BH

S-2 2

S-2 2

DETAIL BE

**DETAIL BF**

**DETAIL BK**

**DETAIL BE**

**DETAIL BH**

**DETAIL BF**

**DETAIL BK**

E-53

TU-9 1275

E-53

TU10 2340

SH-2

F-2

SH-2

F-2

SH-2

F-2

E-53

TU-9 890

A-33

CLAMP-CLOSED  
 010497-01-000

TU10 955

S-2 2

S-2 2

S-2 2

E-53

TU-8 635

T-30

S-2 2

S-2 4

TO TOILET

E-53

TU-8 200

E-54

TU-8 285

T-30

TU-9 170

E-54

TU-9 80

E-51

TO FLUSHING TANK

**DETAIL BH**  
 (SHOWN W/O FLOOR & CABINETS)

**DETAIL BG**

CU-2

CU-2

**DETAIL BG**  
 (SHOWN W/O CABINETS)

E-53

TU-9 1770

DETAIL BH

S-2 2

S-2 2

DETAIL BE

**DETAIL BF**

**DETAIL BK**

**DETAIL BE**

**DETAIL BH**

**DETAIL BF**

**DETAIL BK**

E-53

TU-9 1275

E-53

TU10 2340

SH-2

F-2

SH-2

F-2

SH-2

F-2

E-53

TU-9 890

A-33

CLAMP-CLOSED  
 010497-01-000

TU10 955

S-2 2

S-2 2

S-2 2

E-53

TU-8 635

T-30

S-2 2

S-2 4

TO TOILET

E-53

TU-8 200

E-54

TU-8 285

T-30

TU-9 170

E-54

TU-9 80

E-51

TO FLUSHING TANK

**DETAIL BH**  
 (SHOWN W/O FLOOR & CABINETS)

**DETAIL BG**

CU-2

CU-2

**DETAIL BG**  
 (SHOWN W/O CABINETS)

E-53

TU-9 1770

DETAIL BH

S-2 2

S-2 2

DETAIL BE

**DETAIL BF**

**DETAIL BK**

**DETAIL BE**

**DETAIL BH**

**DETAIL BF**

**DETAIL BK**

E-53

TU-9 1275

E-53

TU10 2340

SH-2

F-2

SH-2

F-2

SH-2

F-2

E-53

TU-9 890

A-33

CLAMP-CLOSED  
 010497-01-000

TU10 955

S-2 2

S-2 2

S-2 2

E-53

TU-8 635

T-30

S-2 2

S-2 4

TO TOILET

E-53

TU-8 200

E-54

TU-8 285

T-30

TU-9 170

E-54

TU-9 80

E-51

TO FLUSHING TANK

**DETAIL BH**  
 (SHOWN W/O FLOOR & CABINETS)

**DETAIL BG**

CU-2

CU-2

**DETAIL BG**  
 (SHOWN W/O CABINETS)

E-53

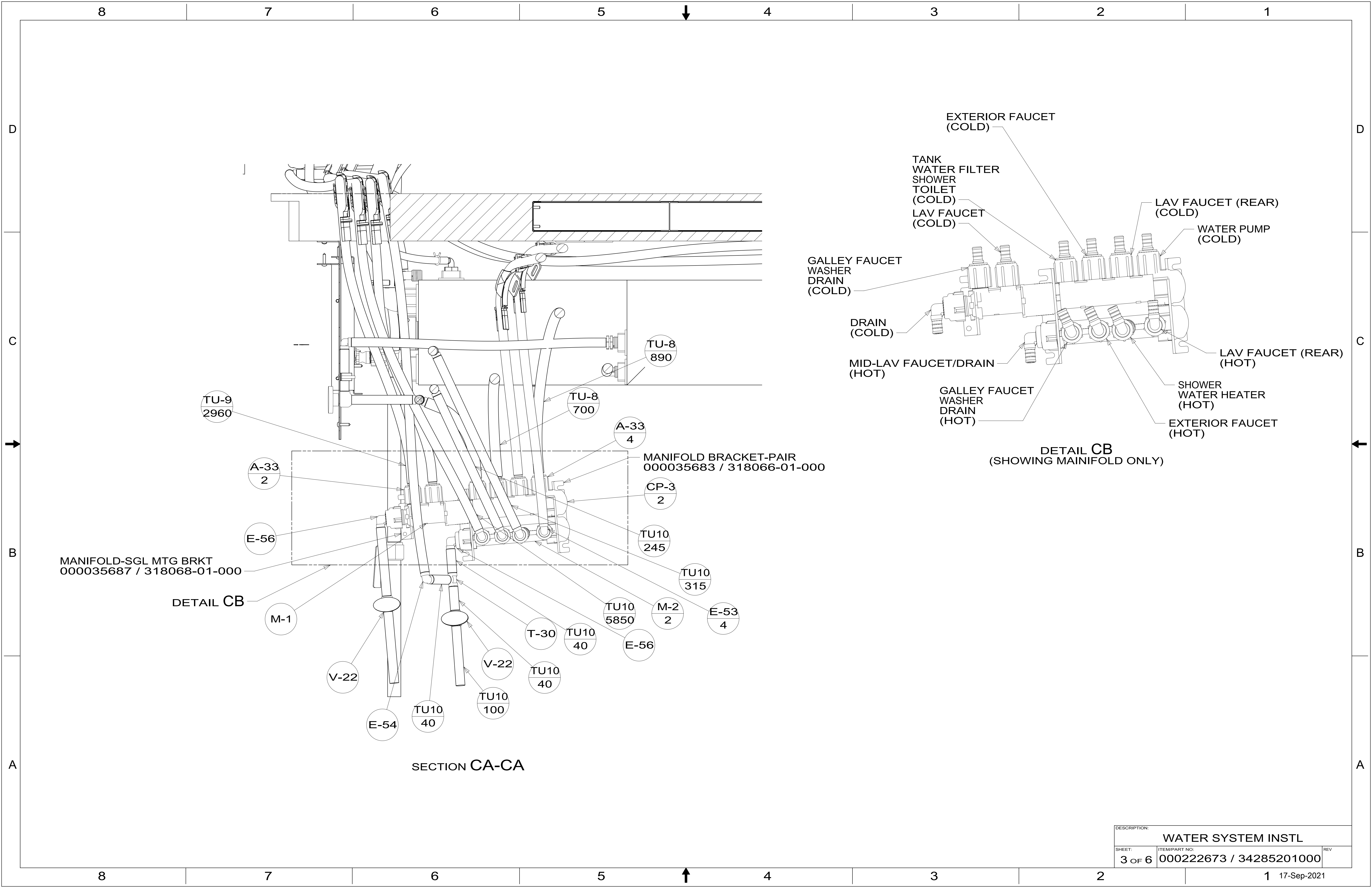
TU-9 1770

DETAIL BH

S-2 2

S-2 2

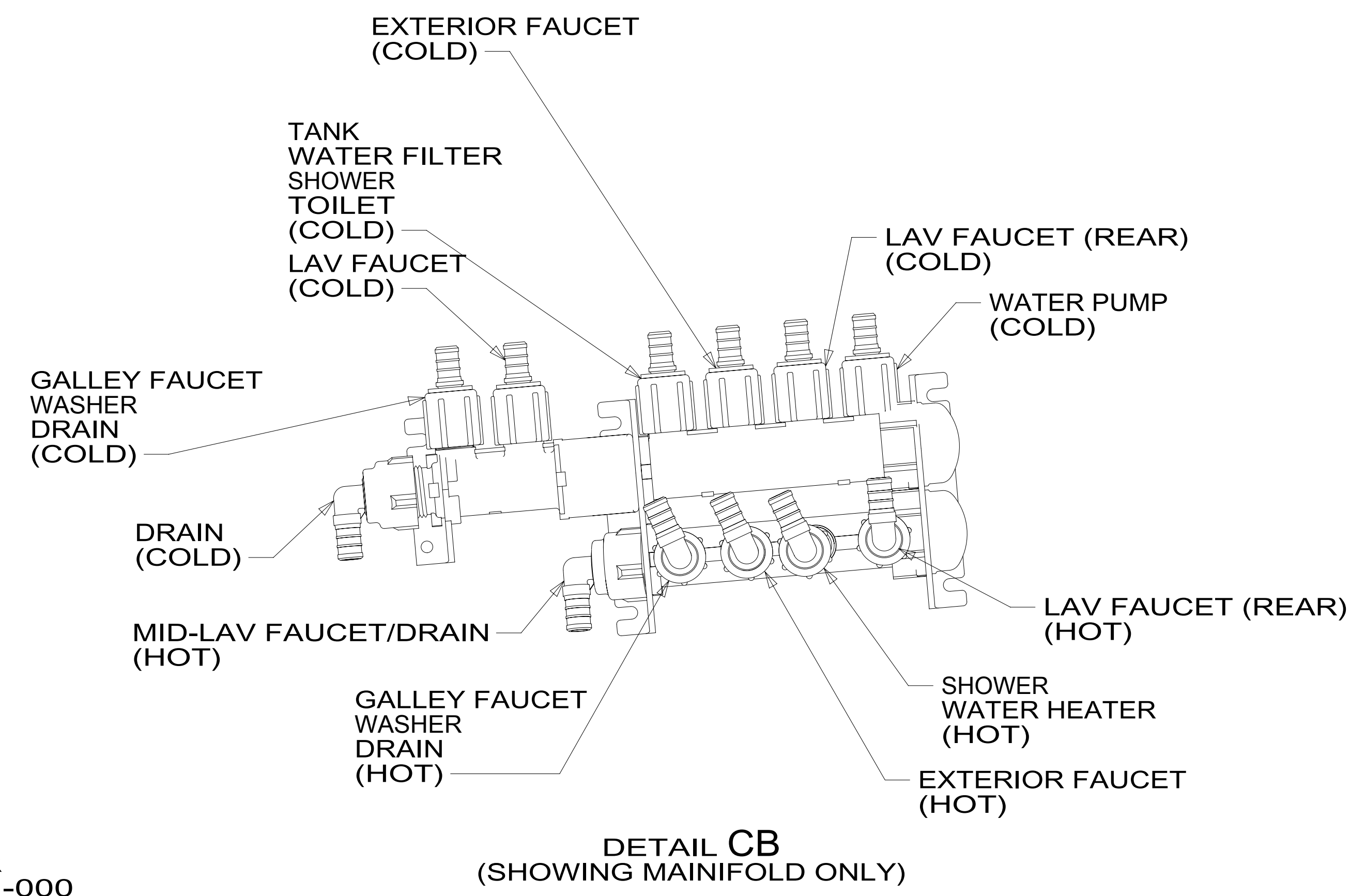
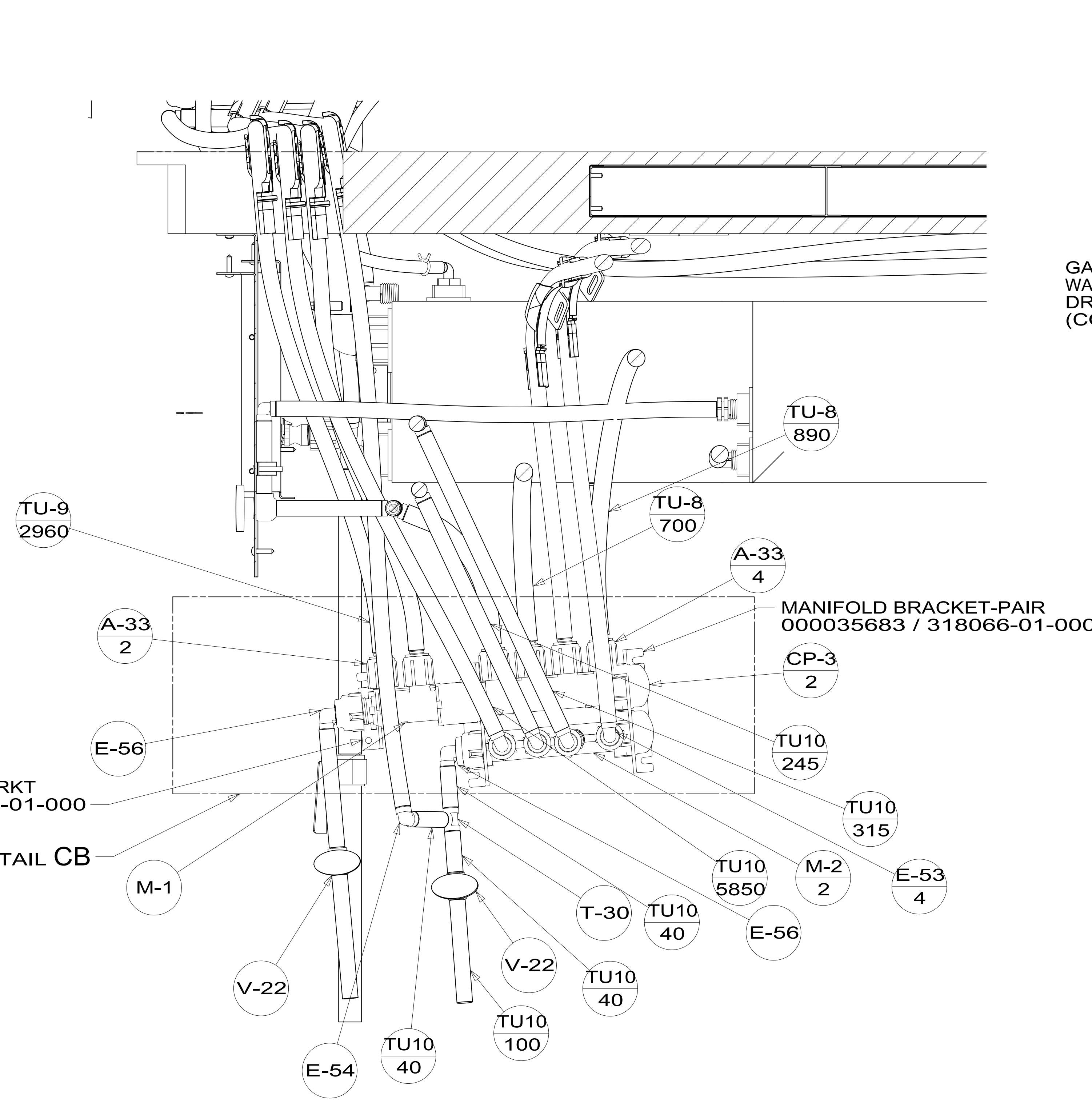
DETAIL BE



8 7 6 5 4 3 2 1

D  
C  
B  
A

D  
C  
B  
A



MANIFOLD-SGL MTG BRKT  
000035687 / 318068-01-000

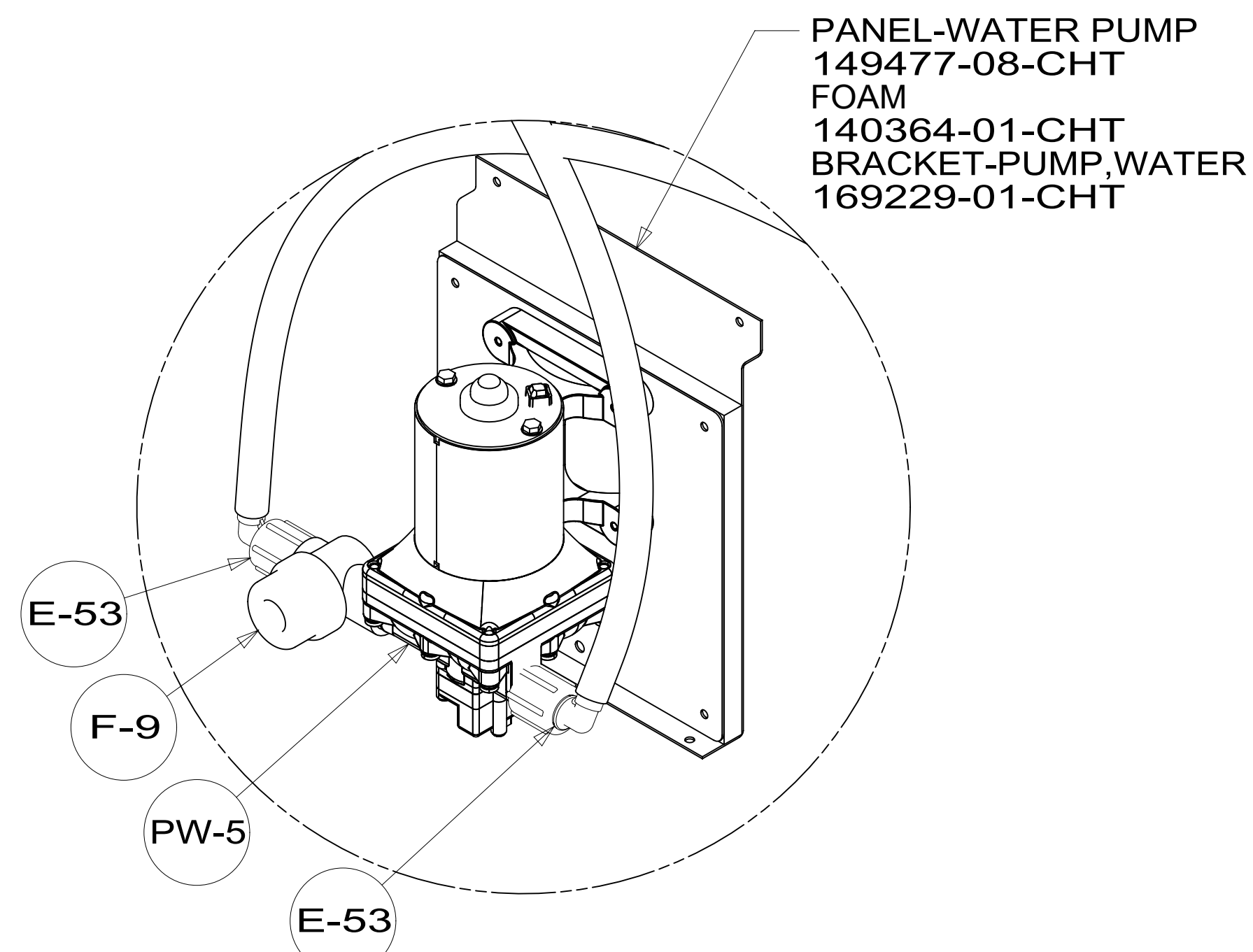
DETAIL CB

SECTION CA-CA

DETAIL CB  
(SHOWING MAINFOLD ONLY)

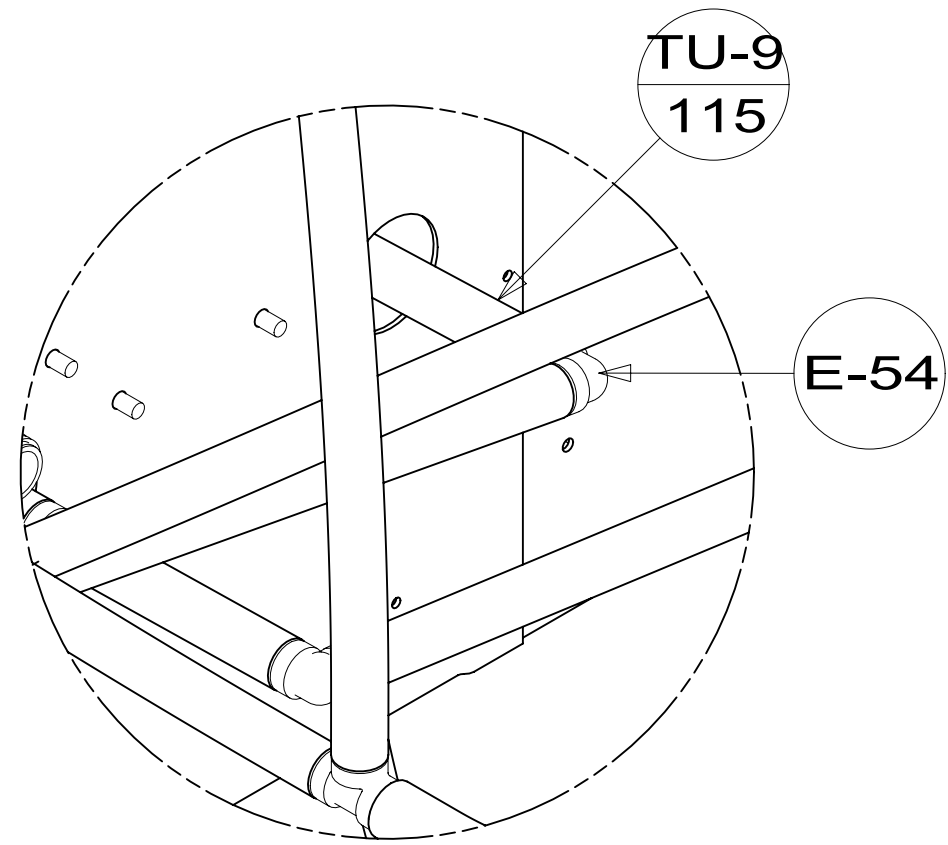
8 7 6 5 4 3 2 1

DESCRIPTION:		
WATER SYSTEM INSTL		
SHEET:	ITEM/PART NO:	REV
3 OF 6	000222673 / 34285201000	

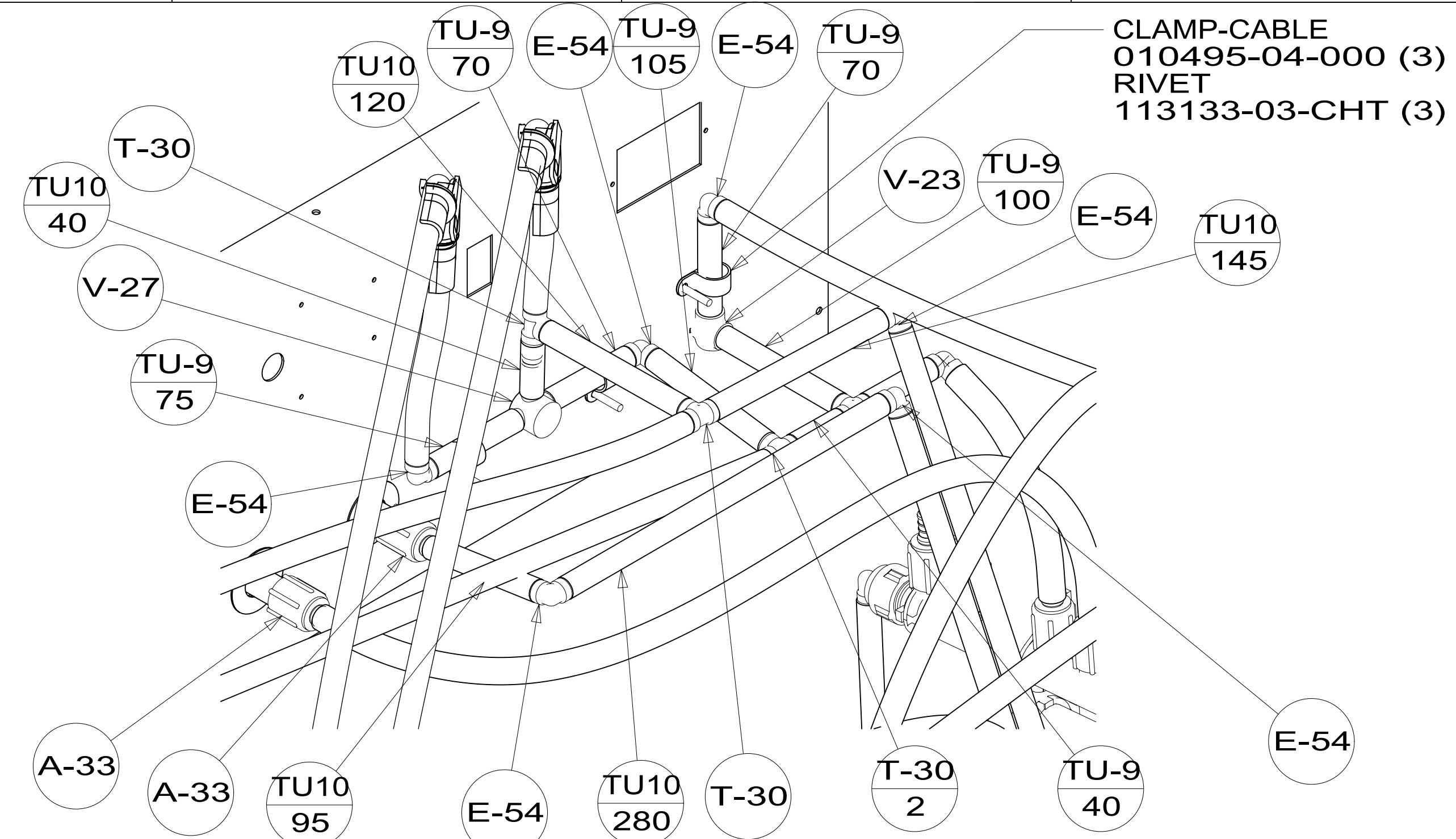


**DETAIL DC**  
(SHOWING WATER PUMP ONLY)

PANEL-WATER PUMP  
149477-08-CHT  
FOAM  
140364-01-CHT  
BRACKET-PUMP,WATER  
169229-01-CHT



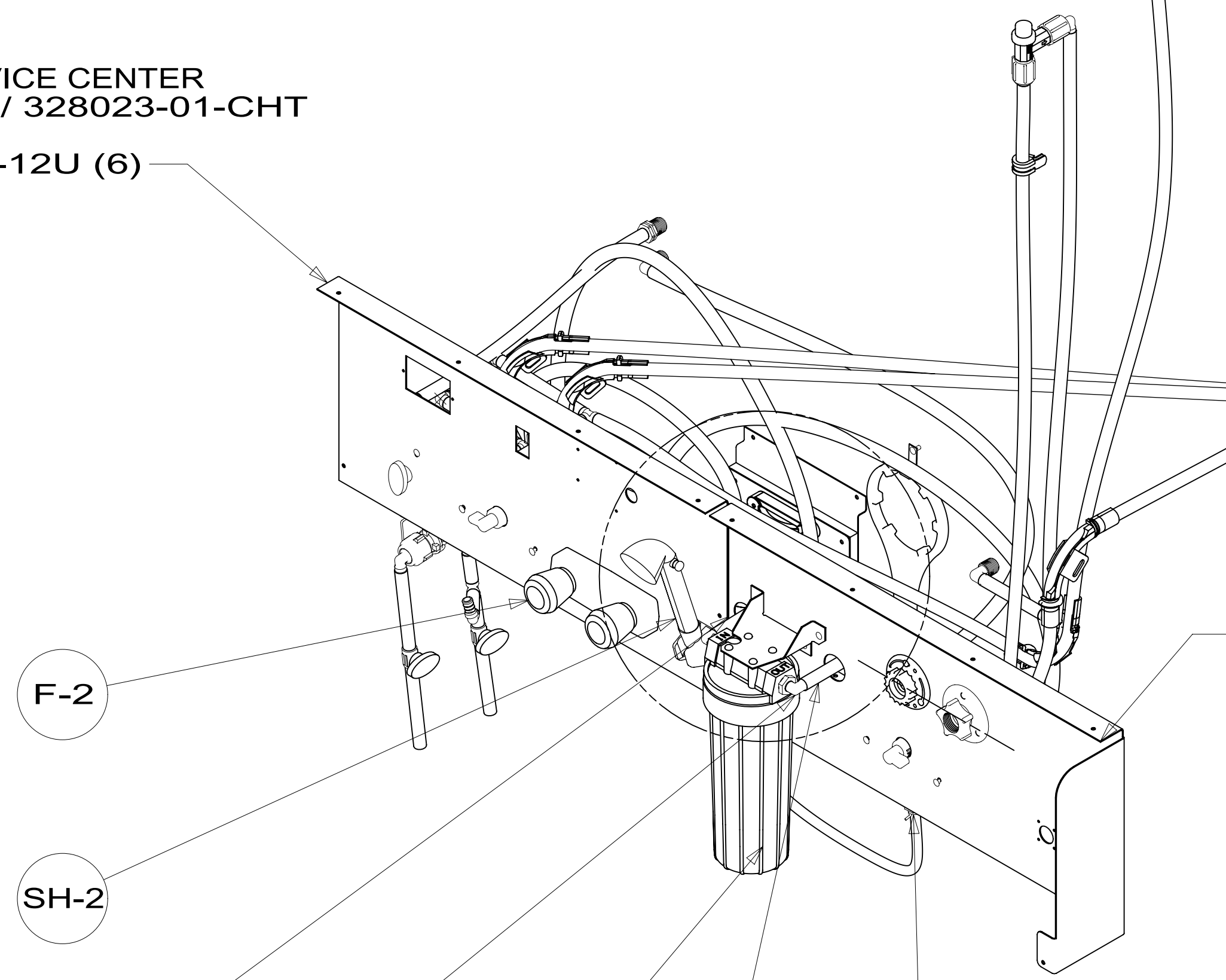
**DETAIL DD**



**DETAIL DE**

CLAMP-CABLE  
010495-04-000 (3)  
RIVET  
113133-03-CHT (3)

PANEL-SERVICE CENTER  
000160416 / 328023-01-CHT  
SCREW  
000G11-08-12U (6)



CLIP-GRIPPER  
091952-03-000

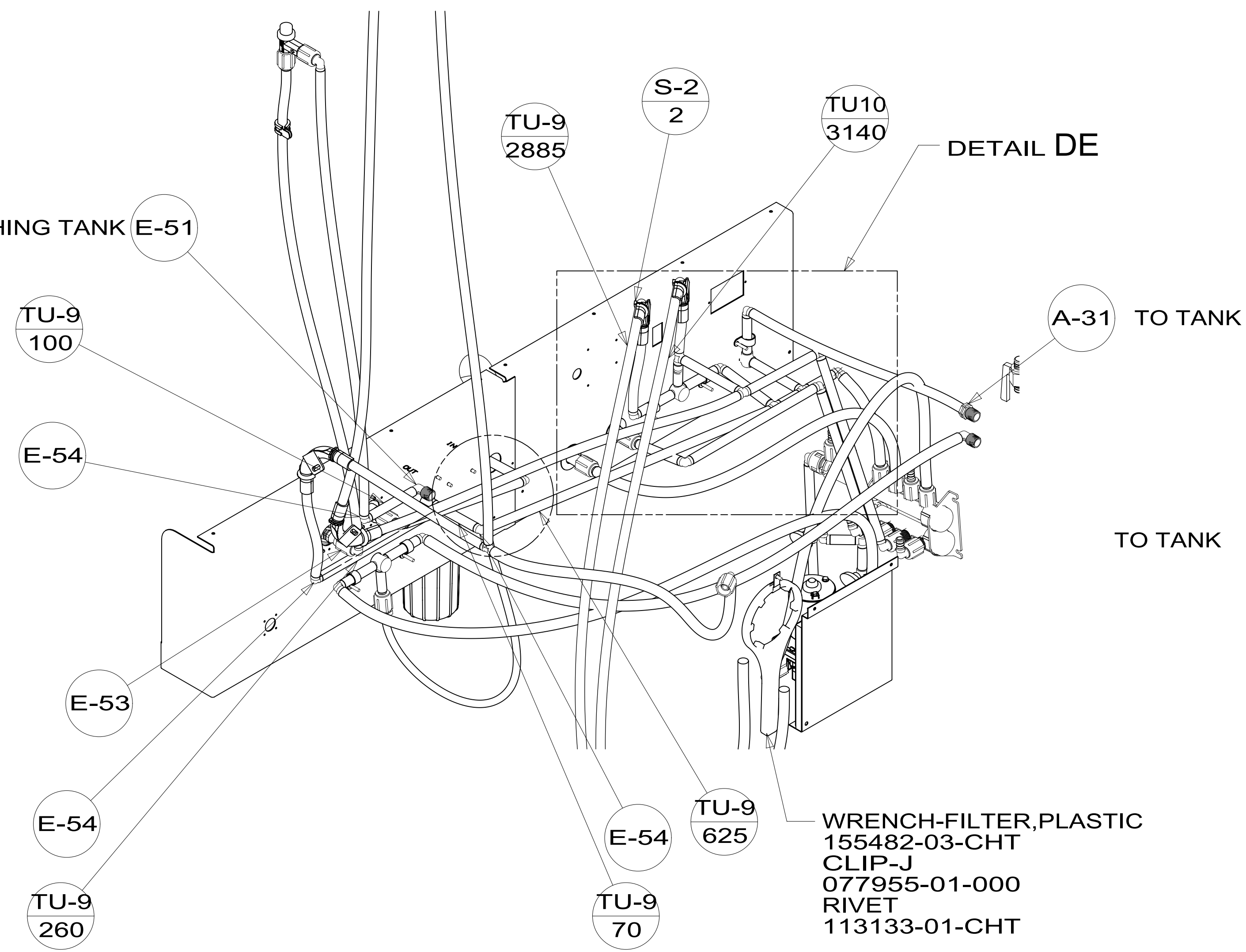
FILTER HOUSING-WATER  
155482-01-CHT  
155482-02-CHT  
CHANNEL-MOUNT,WTR FILTER  
155893-04-CHT  
SCREW  
000G11-10-12U (4)  
RIVET  
113133-01-CHT (4)

CH-2 A-5 CI-3

PANEL-SERVICE CENTER  
000183551 / 334222-01-CHT  
SCREW  
000G11-08-12U (5)

SCREW  
000G11-08-12U (3)

TO FLUSHING TANK E-51



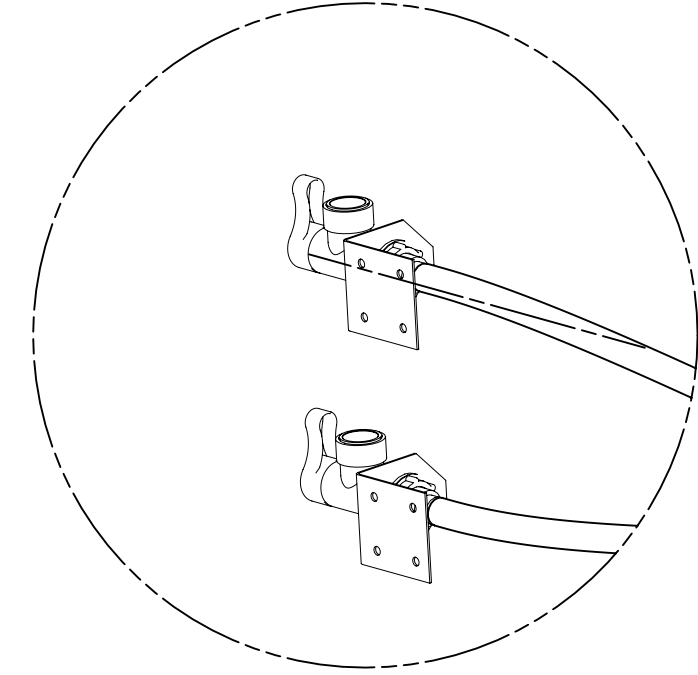
**DETAIL DE**

WRENCH-FILTER, PLASTIC  
155482-03-CHT  
CLIP-J  
077955-01-000  
RIVET  
113133-01-CHT

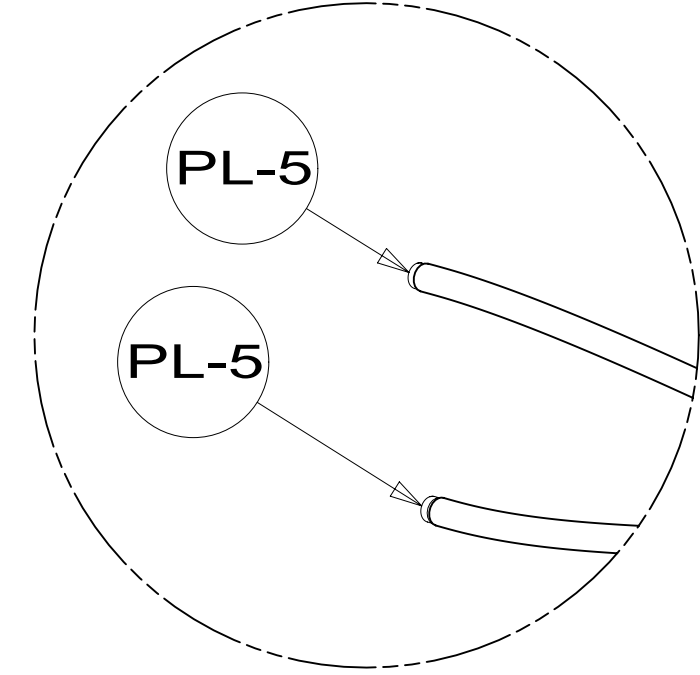
DESCRIPTION: <b>WATER SYSTEM INSTL</b>		
SHEET: 4 OF 6	ITEM/PART NO: 000222673 / 34285201000	REV



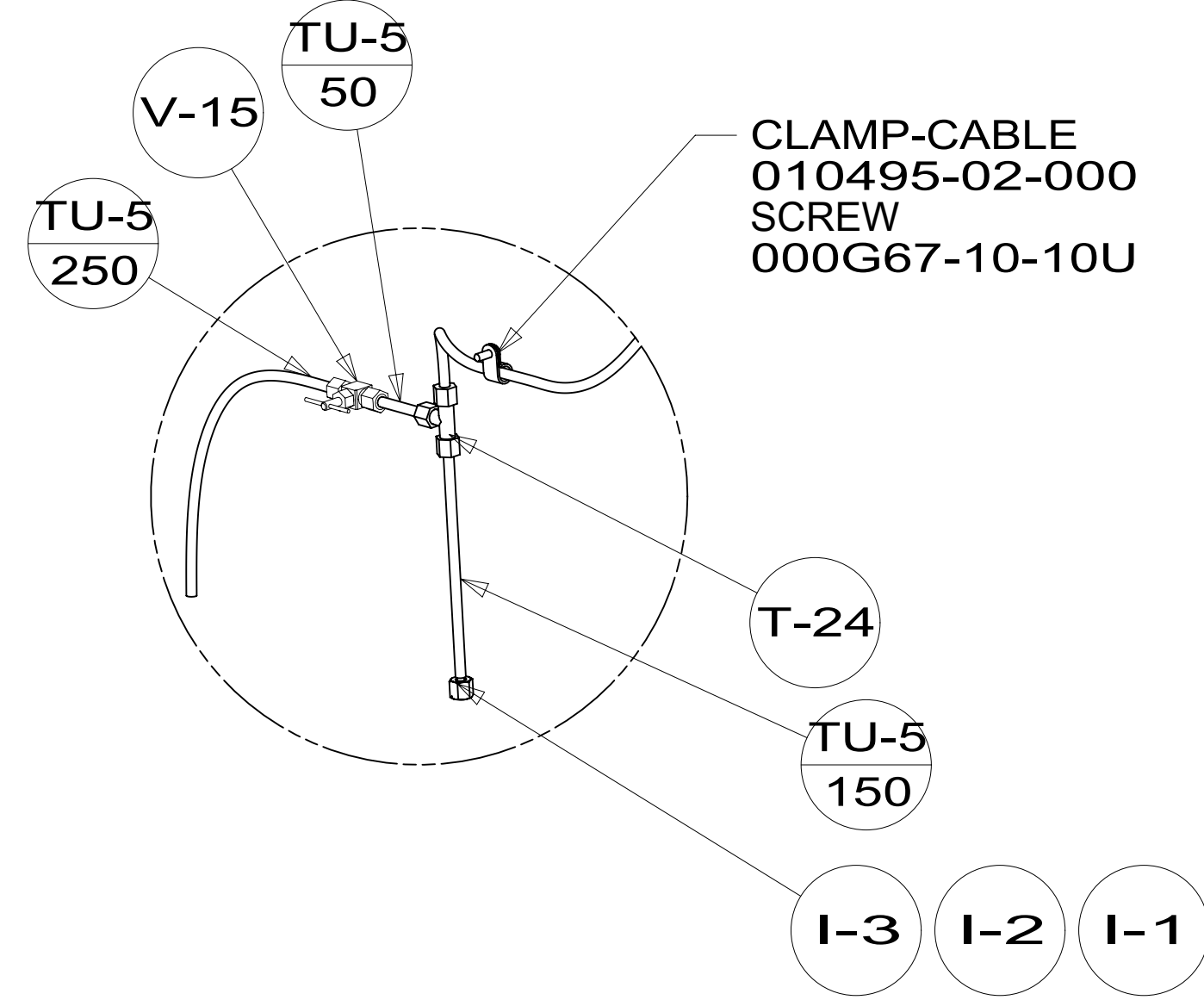
8 7 6 5 4 3 2 1



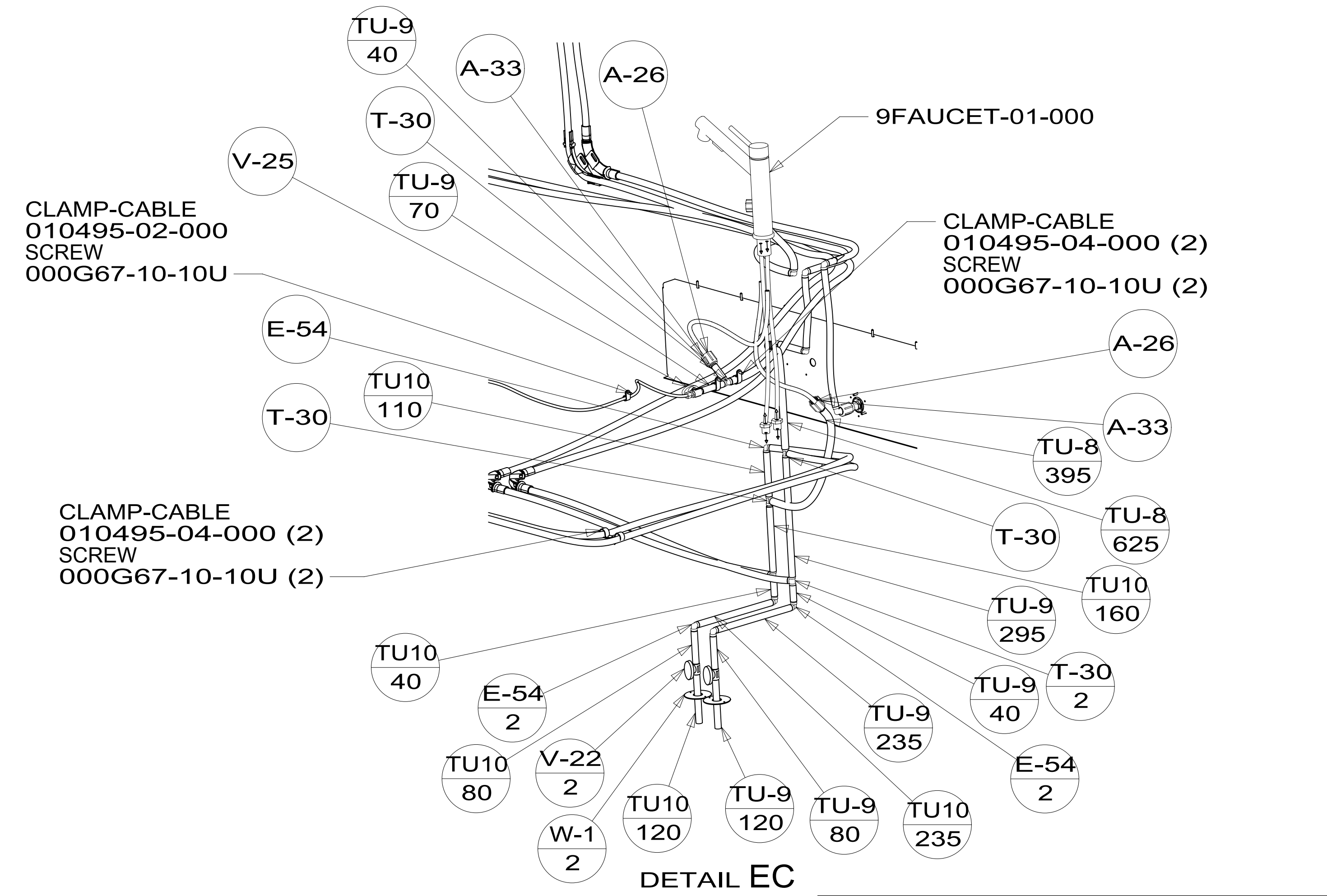
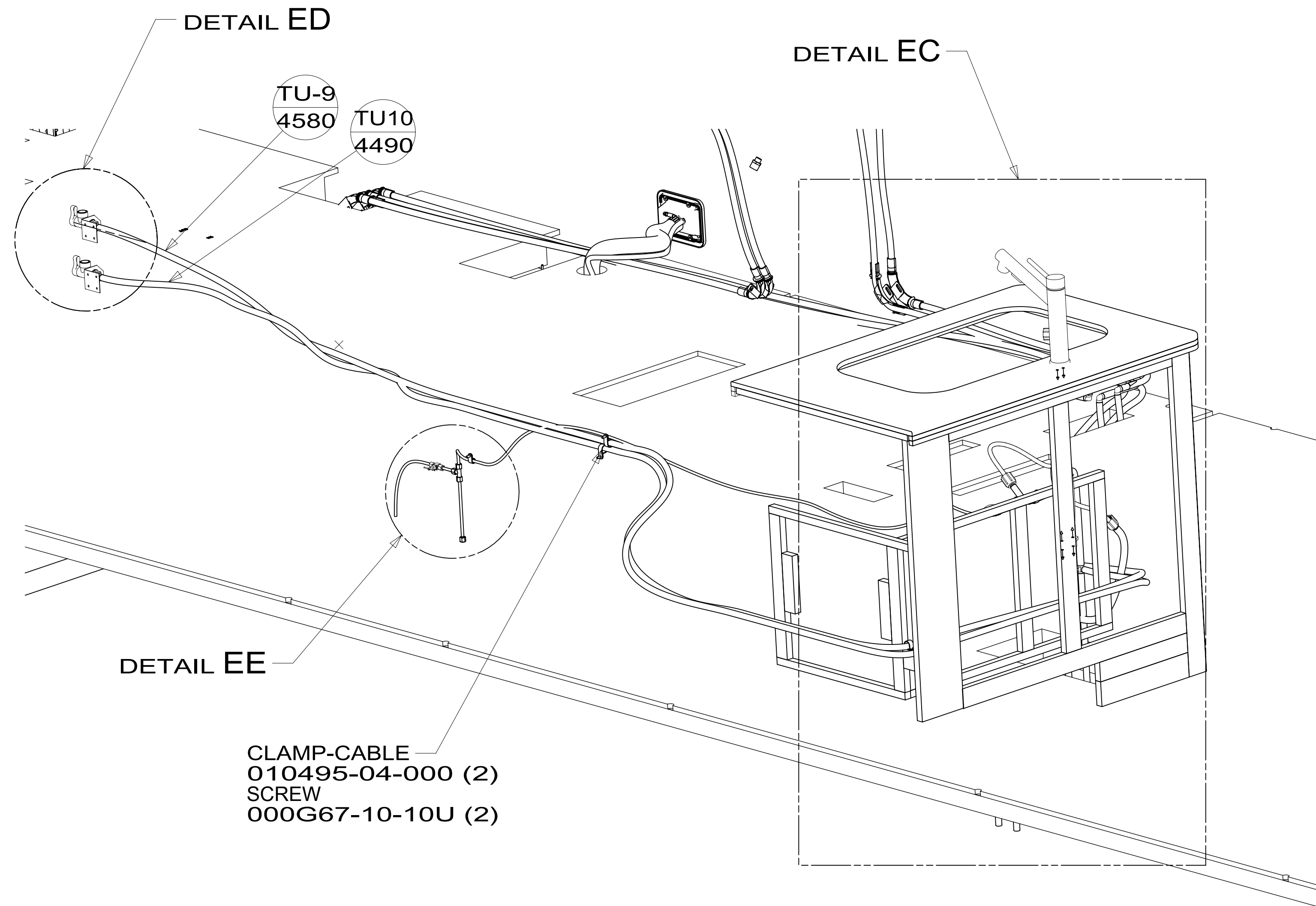
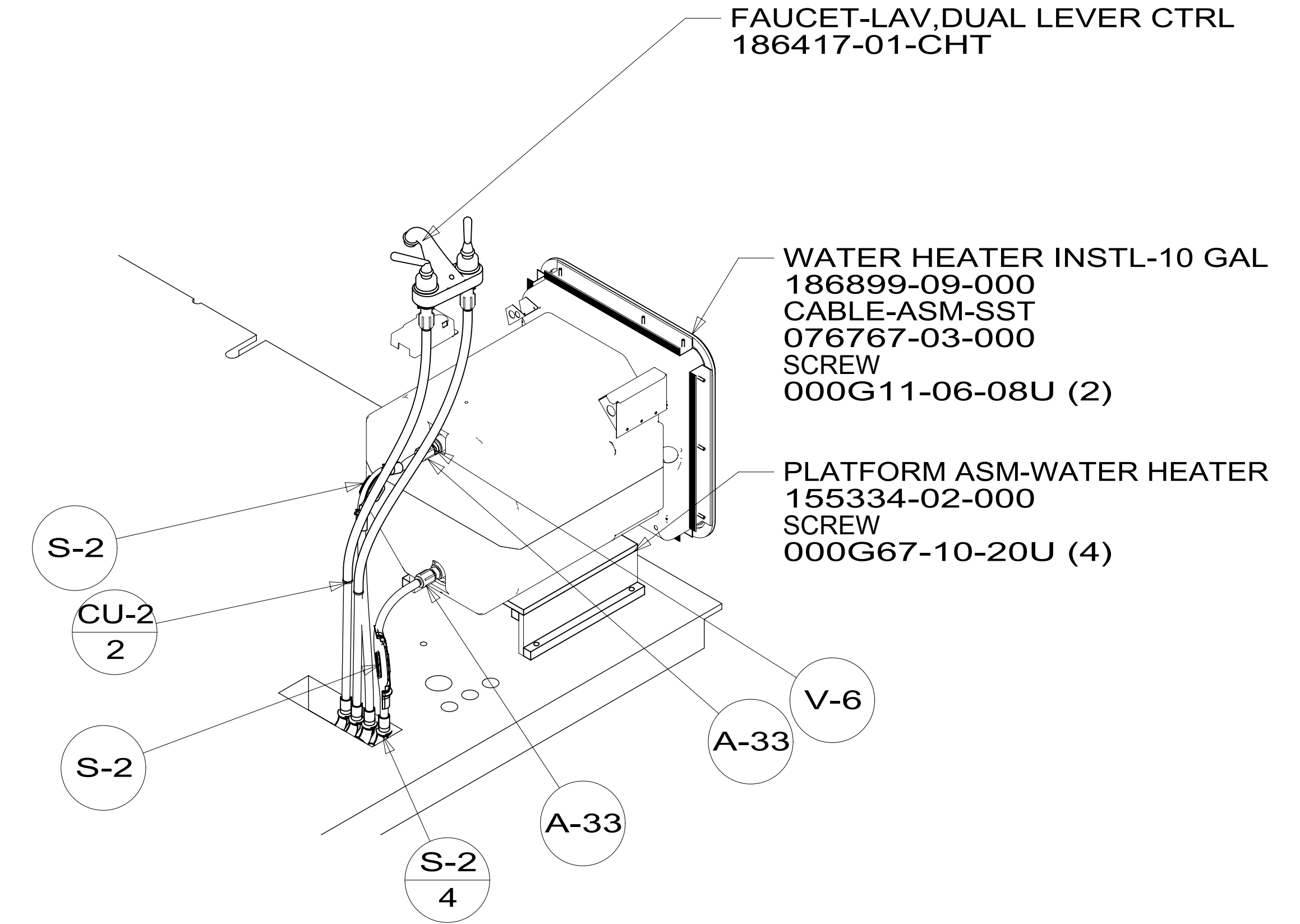
DETAIL ED 54E



DETAIL ED 27M



DETAIL EE



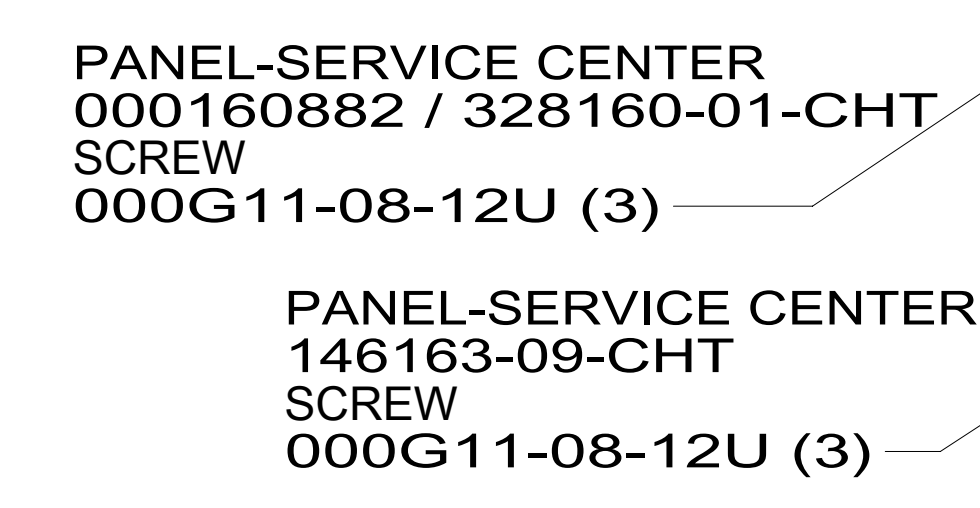
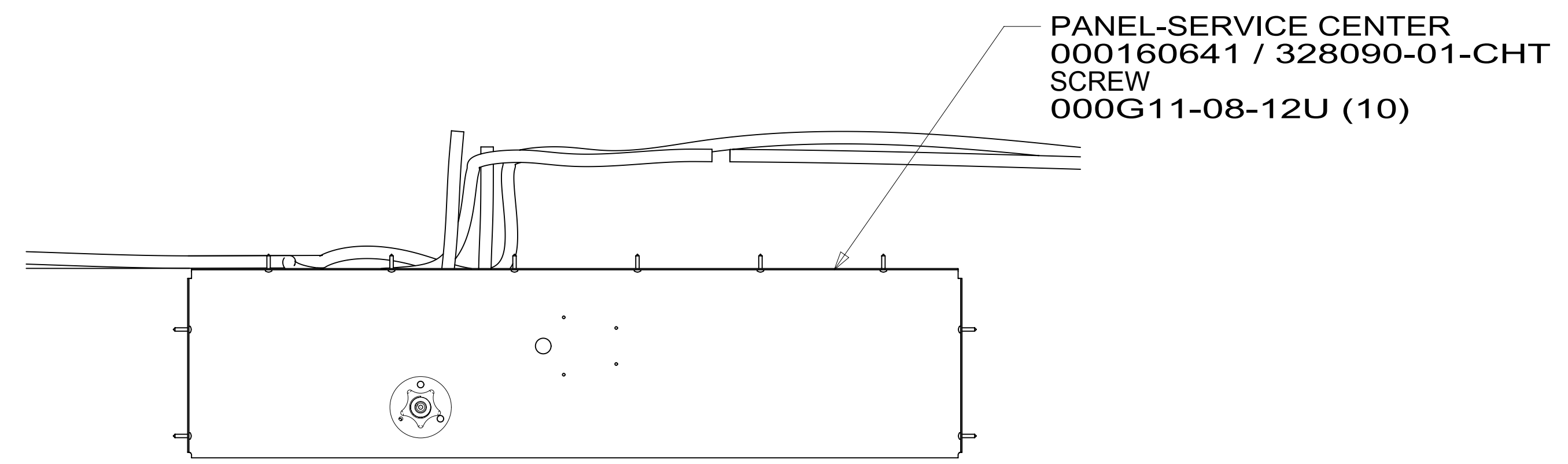
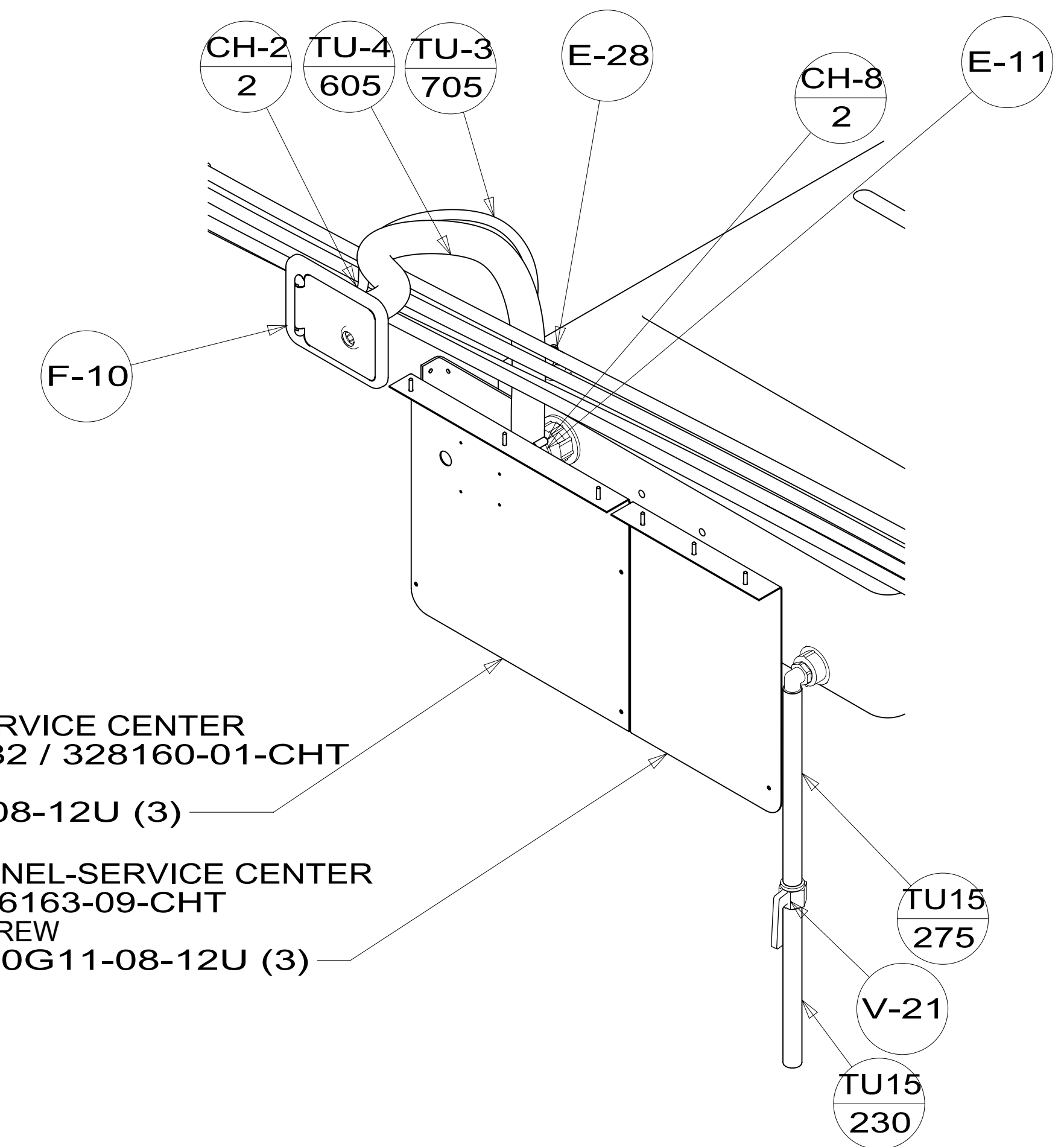
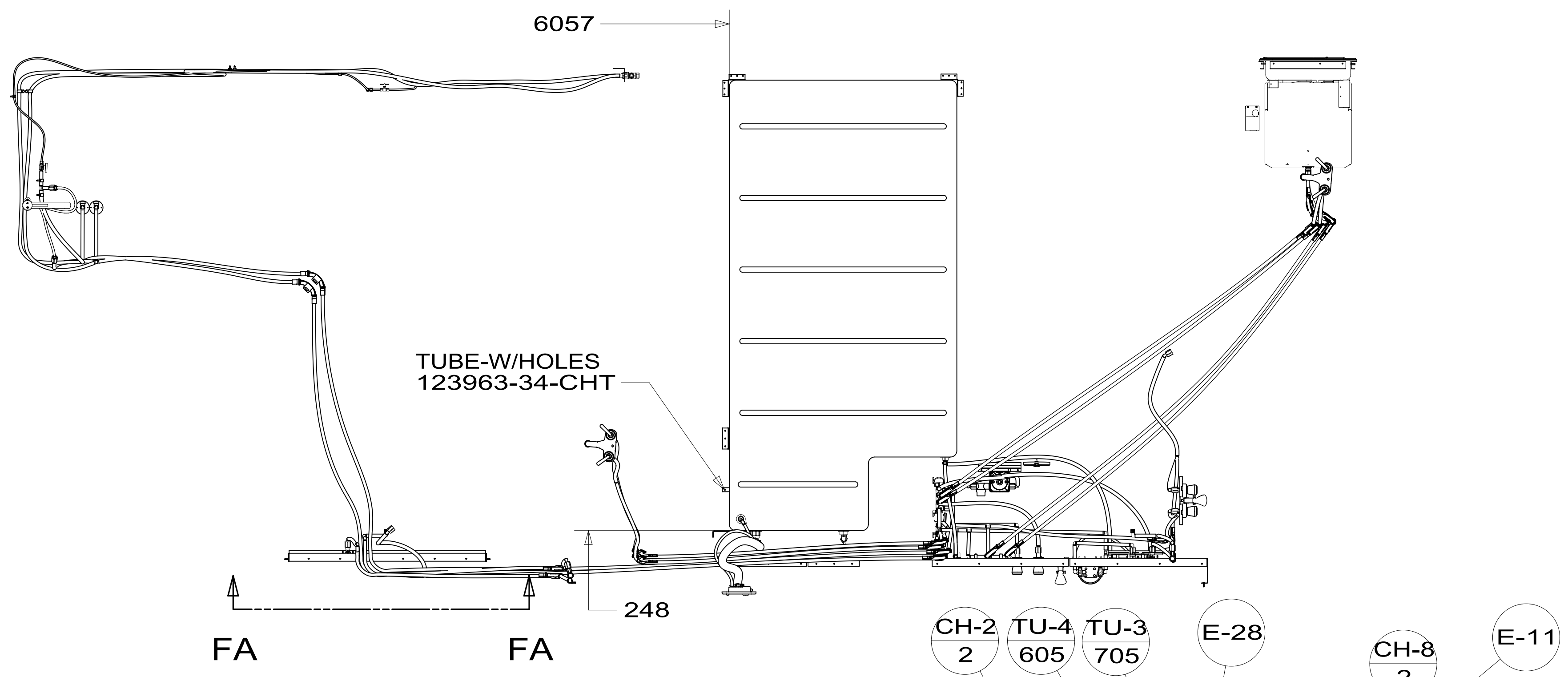
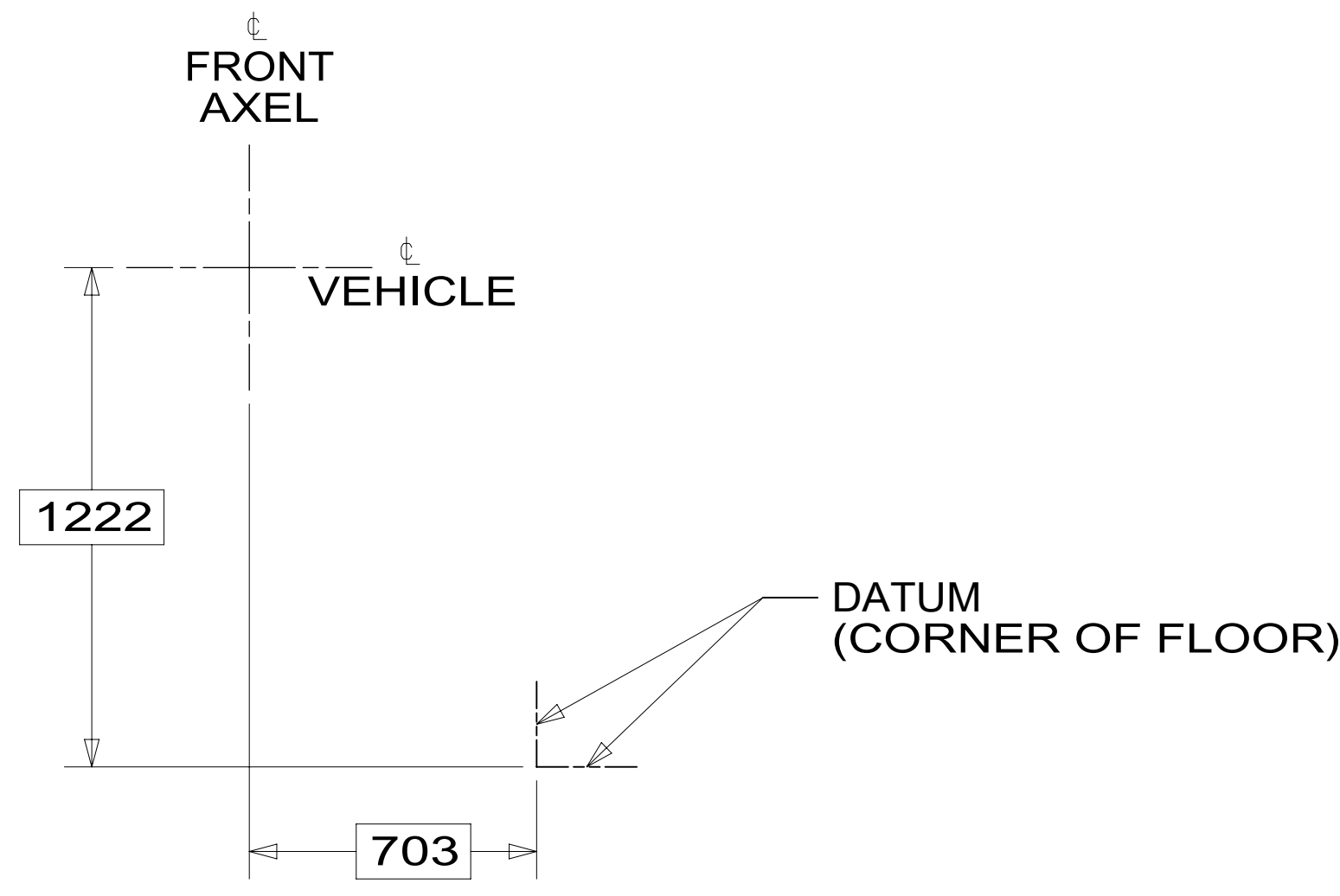
DETAIL EC

DESCRIPTION:		
WATER SYSTEM INSTL		
SHEET:	ITEM/PART NO:	REV
5 OF 6	000222673 / 34285201000	

8 7 6 5 4 3 2 1 17-Sep-2021

8 7 6 5 4 3 2 1

D  
C  
B  
A



VIEW FA-FA

8 7 6 5 4 3 2 1

DESCRIPTION:		
WATER SYSTEM INSTL		
SHEET:	ITEM/PART NO:	REV
6 OF 6	000222673 / 34285201000	