

- NOTES:
1. PLASTIC FITTINGS TO BE SEALED WITH SEALANT 084456-01-000.
  2. TUBING TO BE INSTALLED WITH SUFFICIENT SLOPE TO PROVIDE DRAINAGE TO NEAREST VALVE.
  3. ALL TUBING TO BE SECURED AT 1200 INTERVALS MAXIMUM WITH CLAMP 010495-01-000 AND SCREW 000G67-10-12U OR EQUIVALENT.
  4. ADD TEFLON TAPE 010405-02-000.
  5. ADD PIPE WRAP (LADDER SCRAP 110157-02-000) INSULATION.
  6. LABEL HOT AND COLD SUPPLY TUBES AND TAPE FITTING TO TUBE BEFORE CABINET SET TO PREVENT MOVEMENT.
  7. ALL CRIMP FITTINGS TO 5/8" PEX TUBING REQUIRE 5/8" CLAMP 000156248 / 326669-01-000.
  8. ALL CRIMP FITTINGS TO 1/2" PEX TUBING REQUIRE 1/2" CLAMP 000156249 / 326670-01-000.
  9. ELBOW TO BE TURN 45° BELOW HORIZONTAL LINE.
  10. FOR INSTALLATION USE SILICON-ADHESIVE 000162556 / 328744-02-CHT. APPLY ON TOP OF PLATE, PLACE COVER ON, AND PUT ADHESIVE AROUND CORNER.
  11. LEAVE STUBBED OFF AND HANGING LOOSE

- 21M WASHER/DRYER PREP
- 21S WASHER & DRYER-PAIR

X-X

FOR  
WATER  
CALLOUTS  
SEE DWG NO.  
000209446 /  
303369-01-000

<b>WINNEBAGO</b> <sup>®</sup>		
COPYRIGHT 2023 WINNEBAGO INDUSTRIES, INC.		
DSNR:		ALL DIMENSIONS ARE IN MILLIMETERS
DIFTR:		
UNSPECIFIED TOLERANCES:	MATERIAL:	
WHOLE DIM (X) :	3	
ONE-PLACE (X.X) :	1.5	
TWO-PLACE (X.XX) :	0.50	
ANGLE :	1°	
REFER TO ES0018 FOR FASTENER TIGHTENING GUIDELINES	WEIGHT: (LBS)	FIRST USED: (REF)
DESCRIPTION:		21 Y34AE
<b>WATER SYSTEM INSTL</b>		
SHEET:	ITEM/PART NO.:	REV:
1 OF 5	000221650 / 34255201000	
REF:		1 08-Dec-2023

8 7 6 5 4 3 2 1

D

D

C

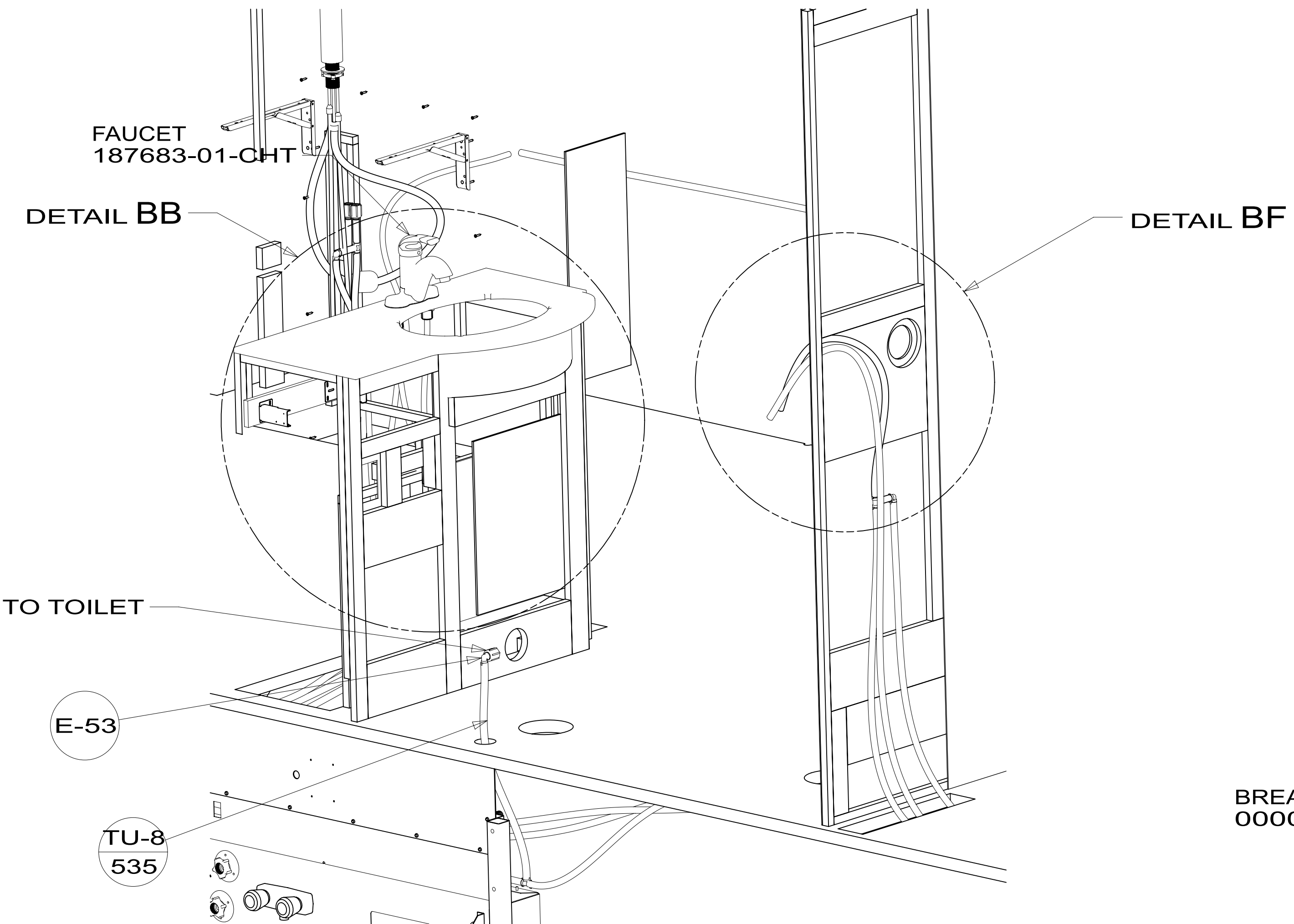
C

B

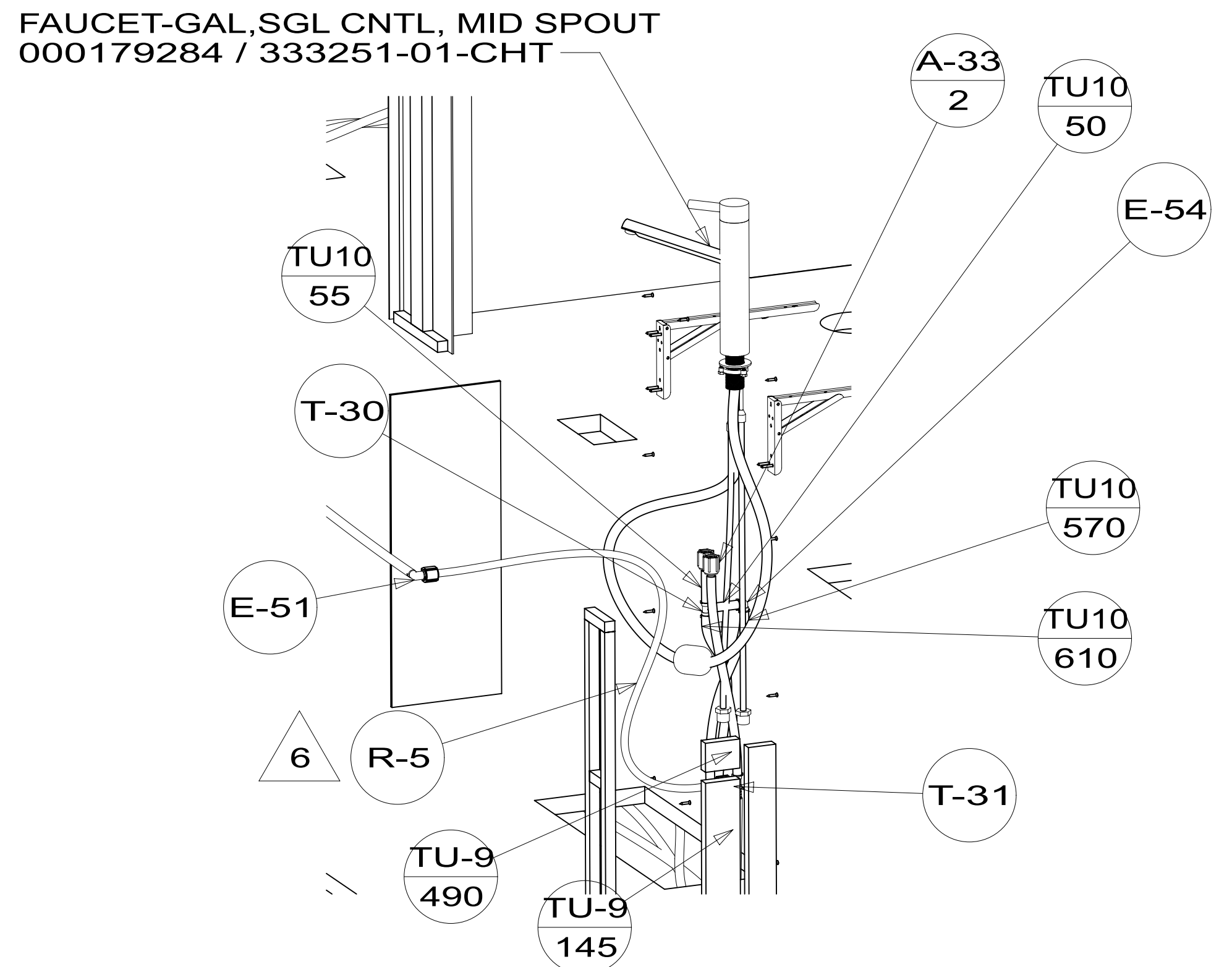
B

A

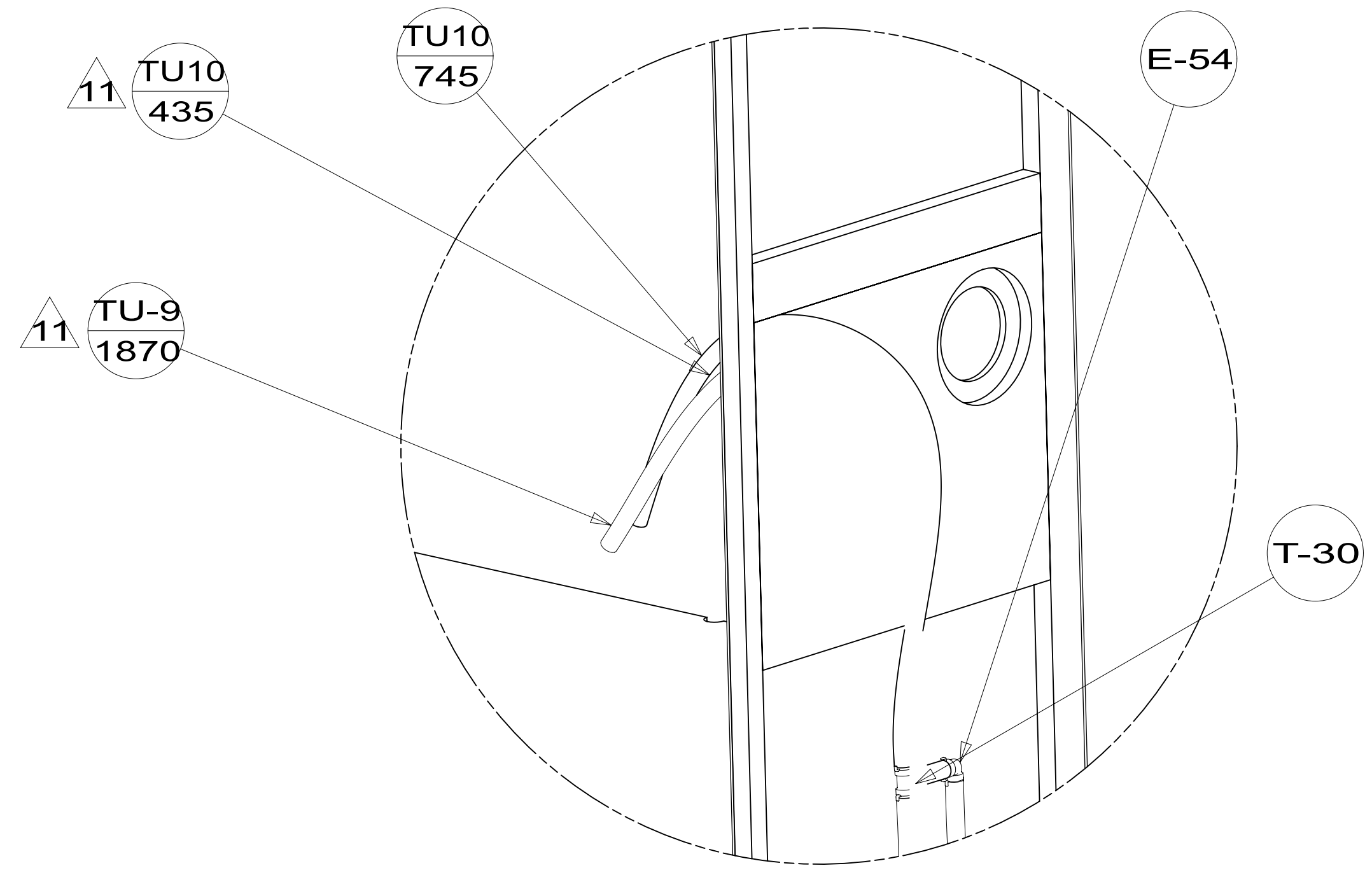
A



VIEW BA

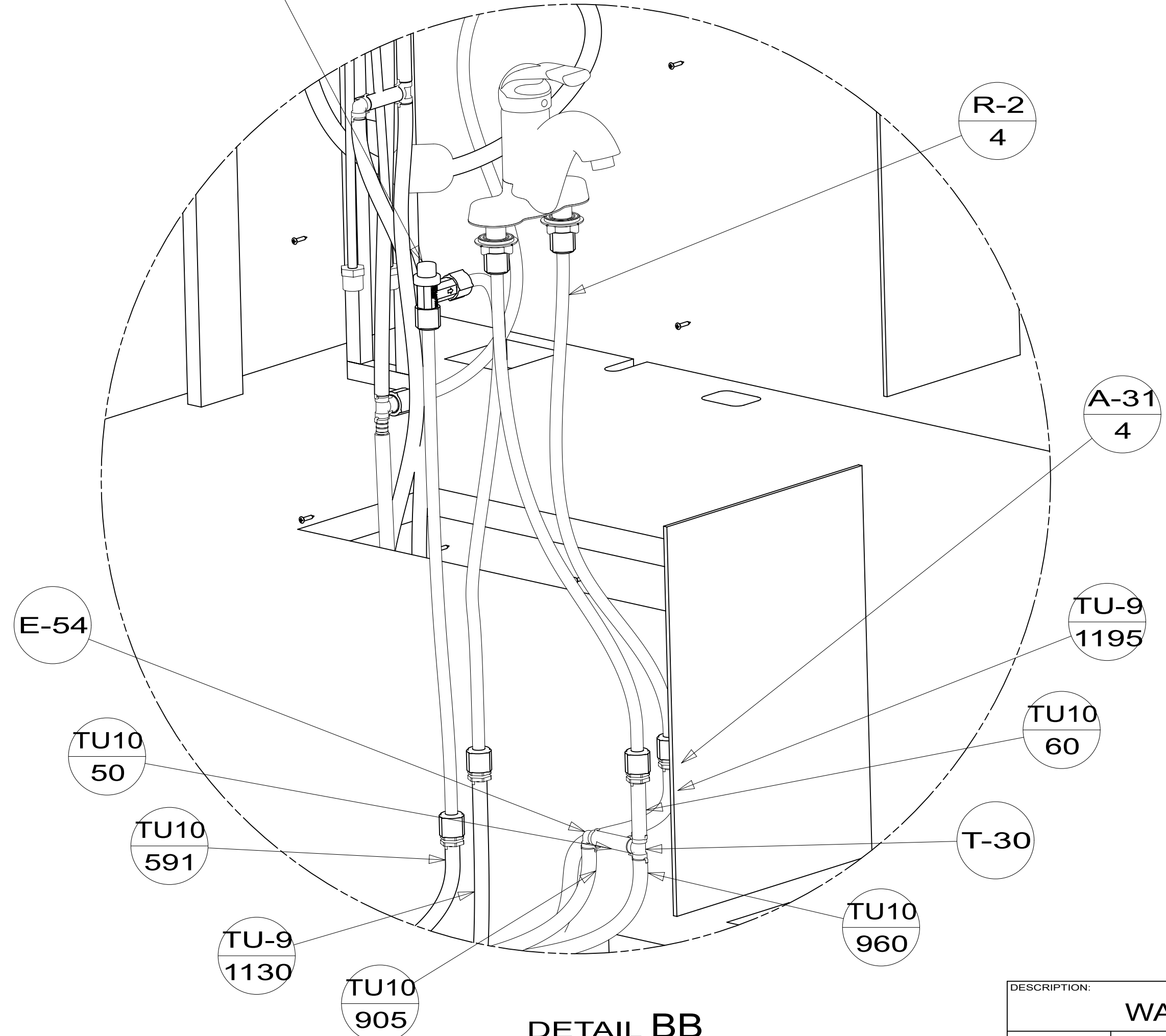


VIEW BE



DETAIL BF

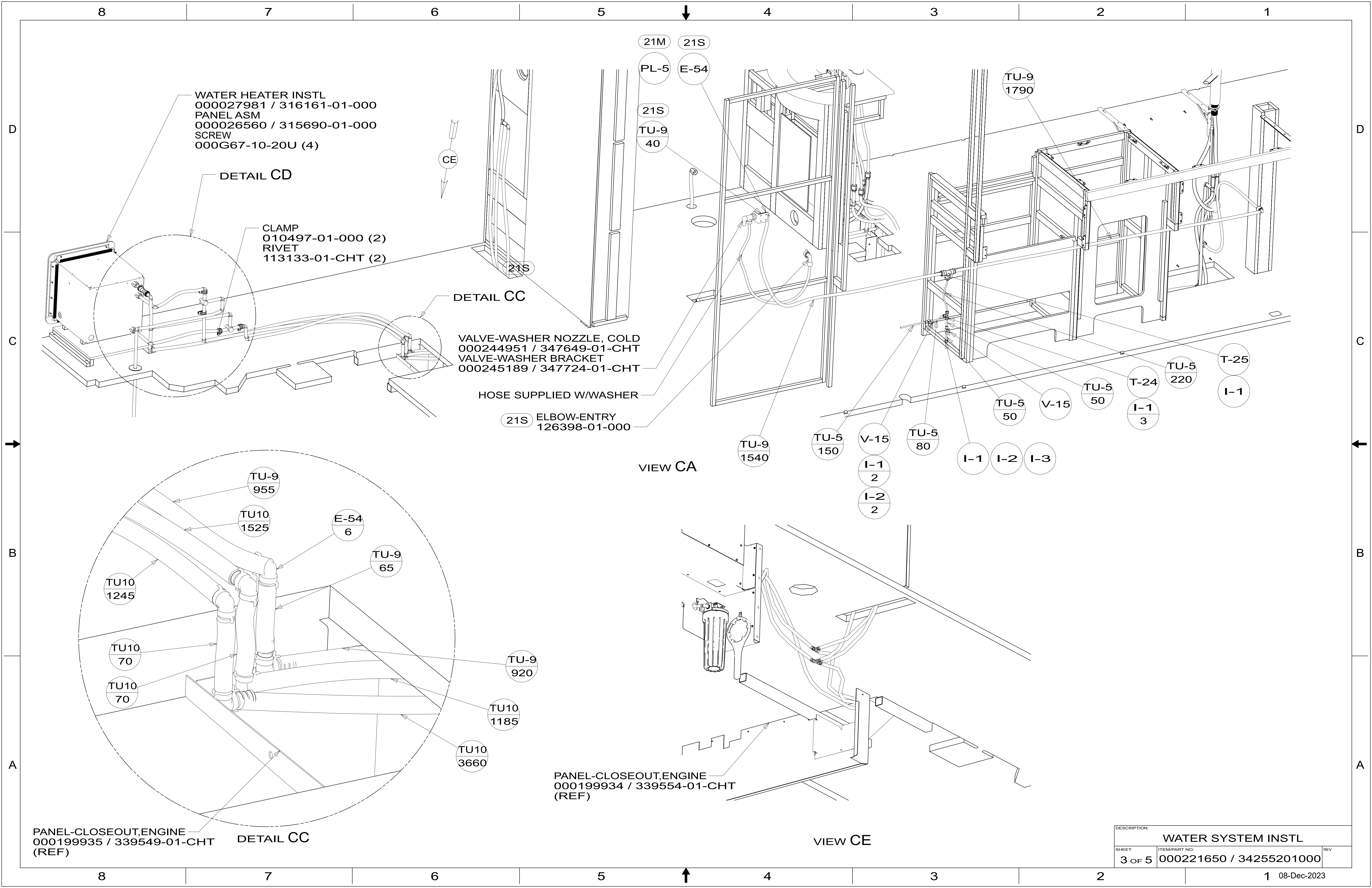
BREAKER-VACUUM, FLUSHING SYS  
000030488 / 316731-01-000

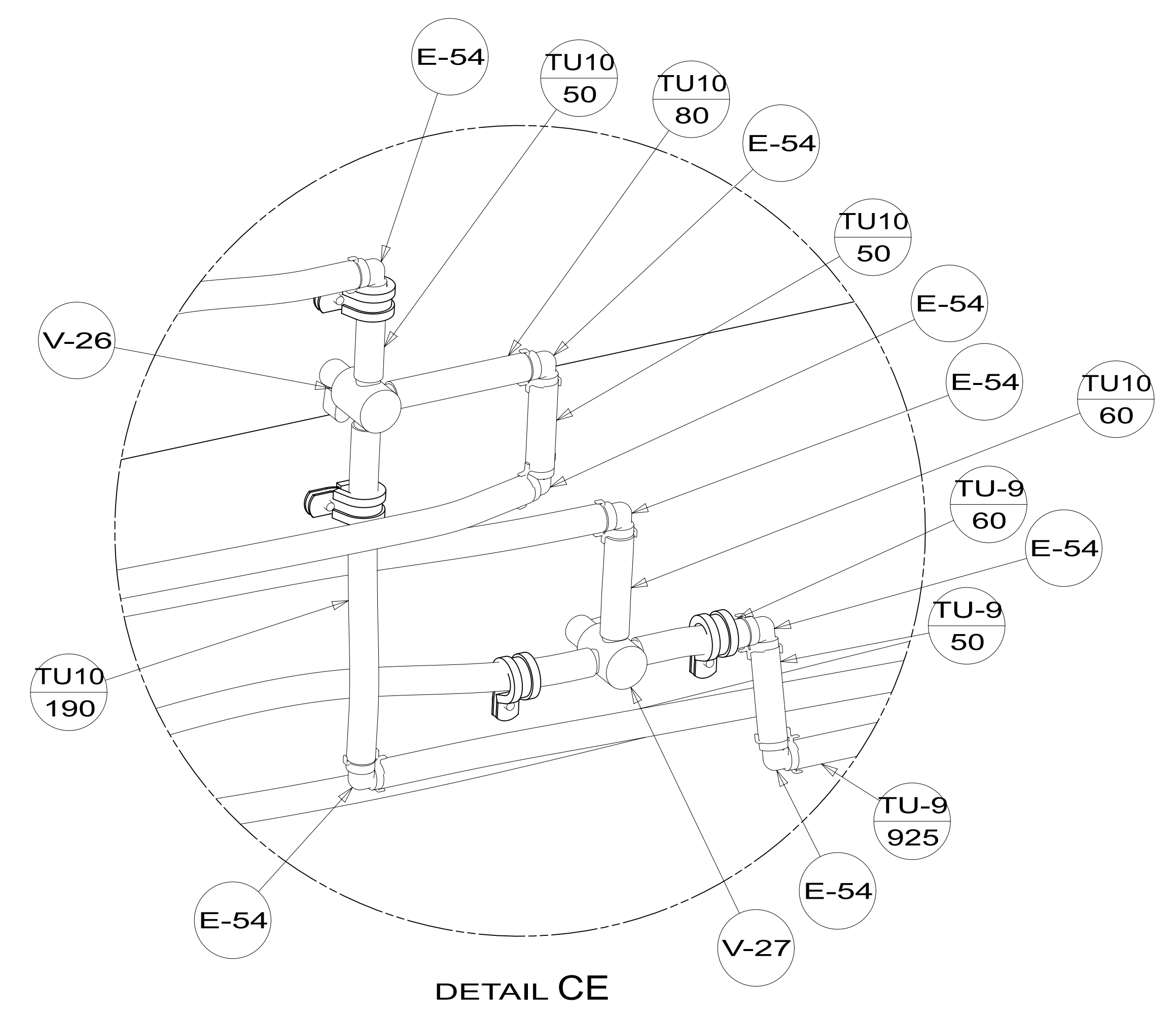
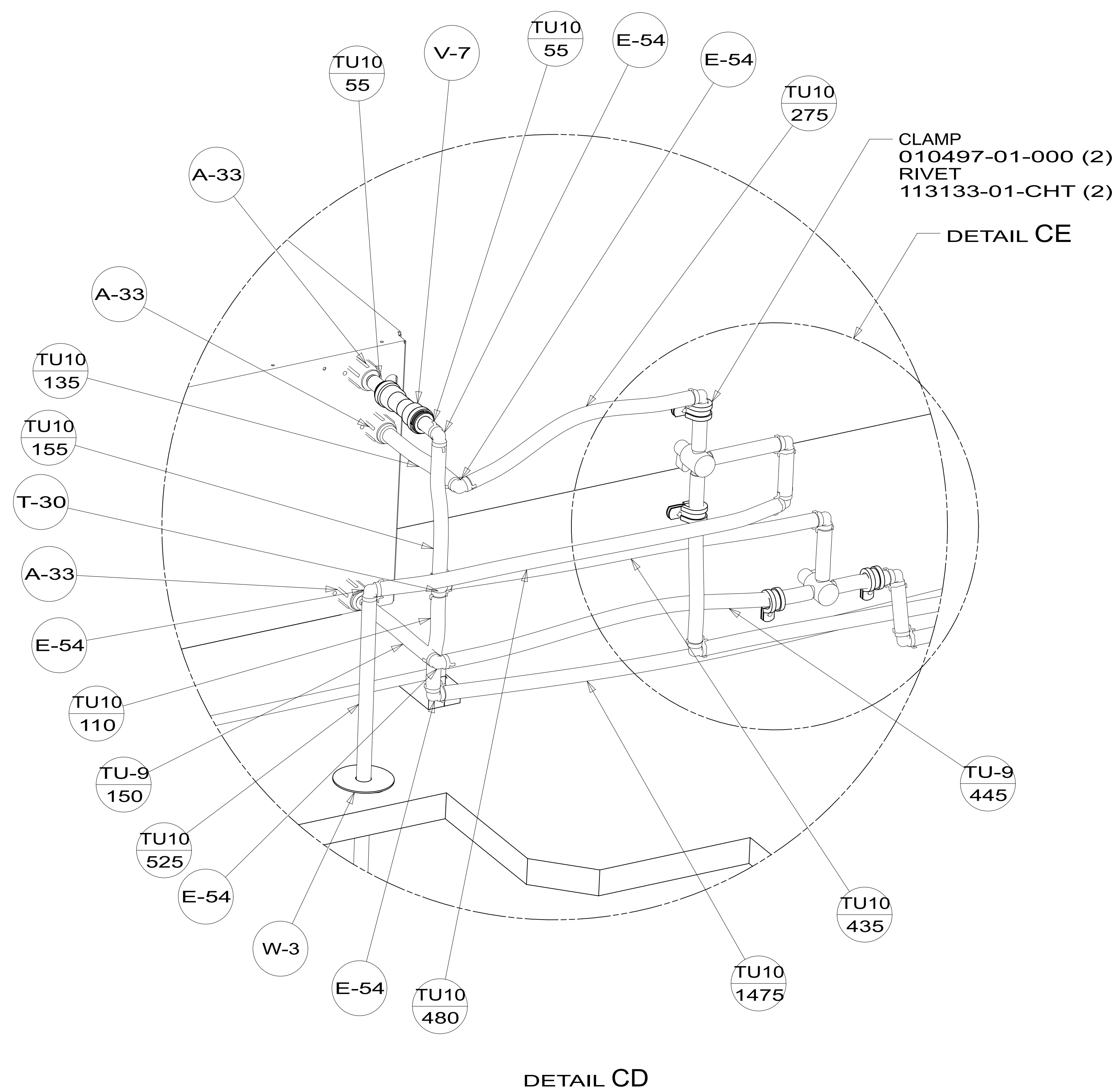


DETAIL BB  
(SHOWN W/OUT CABINETS)

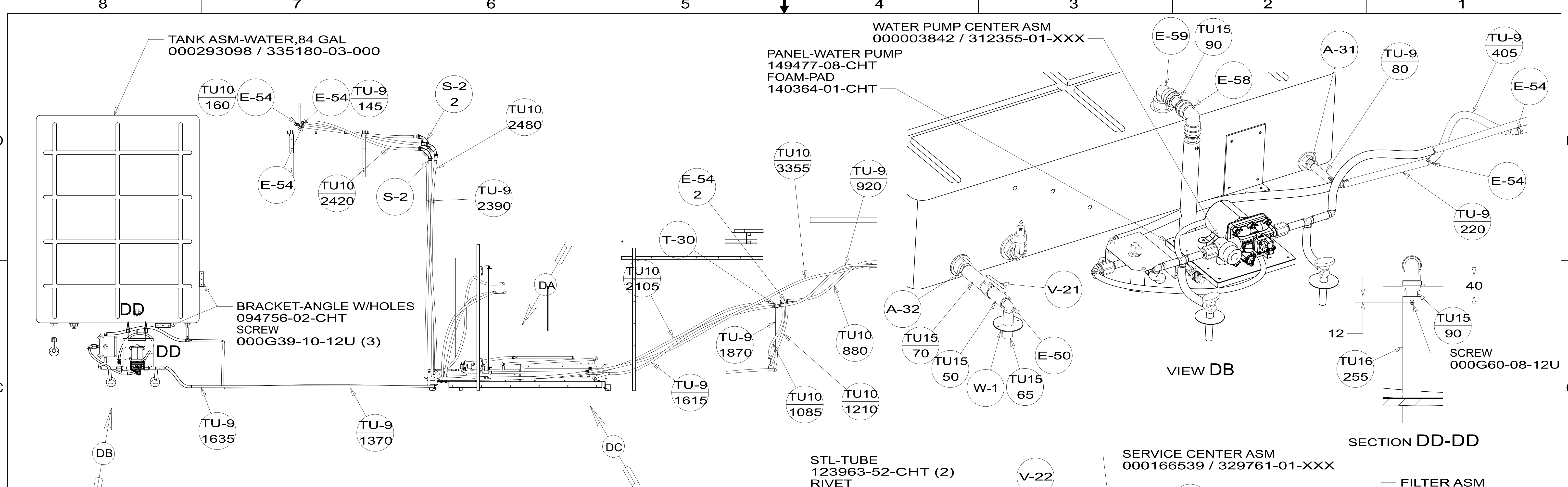
DESCRIPTION:		
WATER SYSTEM INSTL		
SHEET:	ITEM/PART NO.:	REV
2 OF 5	000221650 / 34255201000	

8 7 6 5 4 3 2 1 08-Dec-2023

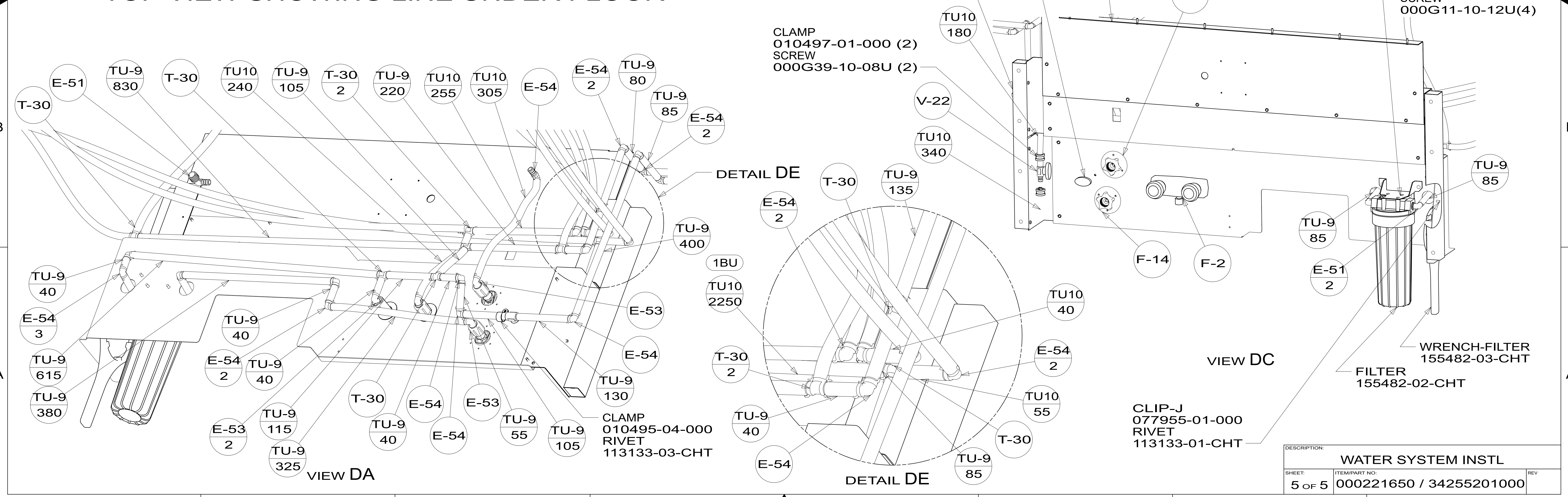




DESCRIPTION:		
WATER SYSTEM INSTL		
SHEET:	ITEM/PART NO.:	REV:
4 OF 5	000221650 / 34255201000	



**TOP VIEW SHOWING LINE UNDER FLOOR**



DESCRIPTION:		
<b>WATER SYSTEM INSTL</b>		
SHEET:	ITEM/PART NO.:	REV
5 OF 5	000221650 / 34255201000	