

- 12. TRIM TAIL PIECE TO 63.5mm PRIOR TO INSTALL.
- 11. TRIM TO FIT
- 10. PREP THE SURFACE PER MANUFACTURERS INSTRUCTIONS BEFORE APPLYING HEAT PAD.
- 9. SEE WIRING INSTL-BODY FOR ELECTRICAL CONNECTIONS.
- 8. USE SMOOTH PLUMBERS PUTTY 167459-01-000 TO SEAL STRAINER (0.2 PER STRAINER).
- 7. REMOVE SWIVEL NUT ON TRAP-WATERLESS 165406-01 AND CONNECT TO A-10.
- 6. VENT PIPE MUST PROJECT 6 TO 15MM FROM SIDEWALL FOR PROPER FIT AND FUNCTION.
- 5. SEAL AROUND SHOWER WITH SILICONE.
- 4. SECURE DRAINAGE PIPES TO CABINET USING WIRE TIE 108046-02-000, AND SCREW 000G67-10-12U AT INTERVALS OF NOT MORE THAN 4 FEET APART.
- 3. ALL PIPE AND FITTINGS TO BE ASSEMBLED WITH SOLVENT 004020-01-000 (USA), 004020-02-000 (CAN)
- 2. SLOPE OF TRAP ARM MUST BE 6 PER 305 mm.
- 1. SLOPE OF HORIZONTAL PIPING TO BE MINIMUM OF 3 PER 305 mm.

NOTES:

X-X

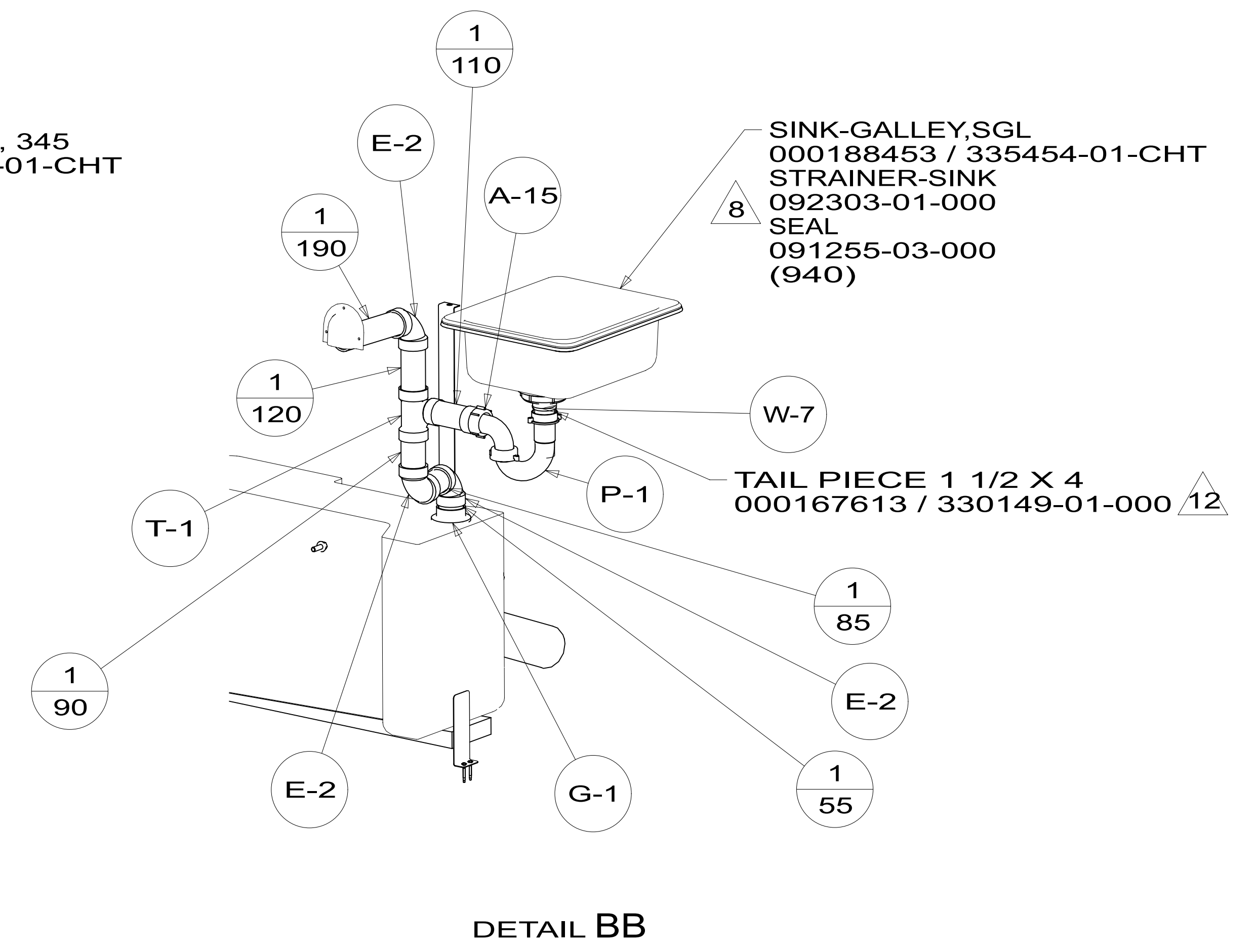
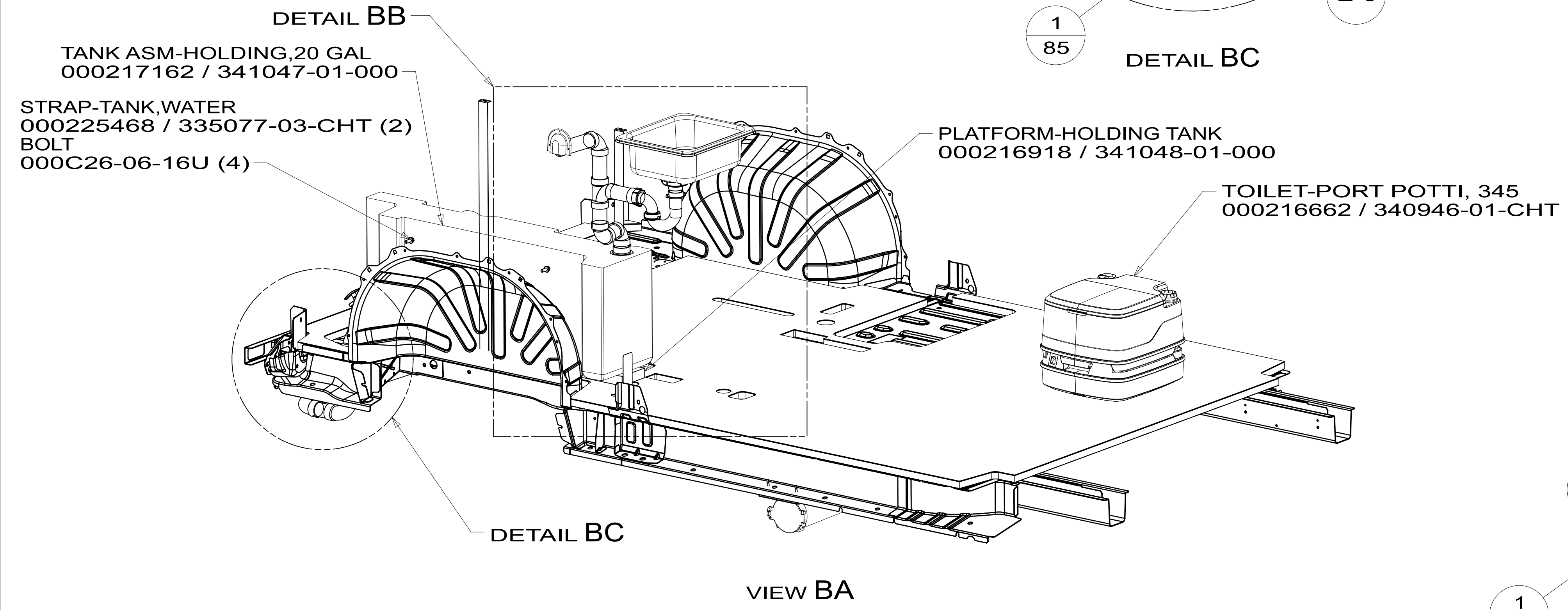
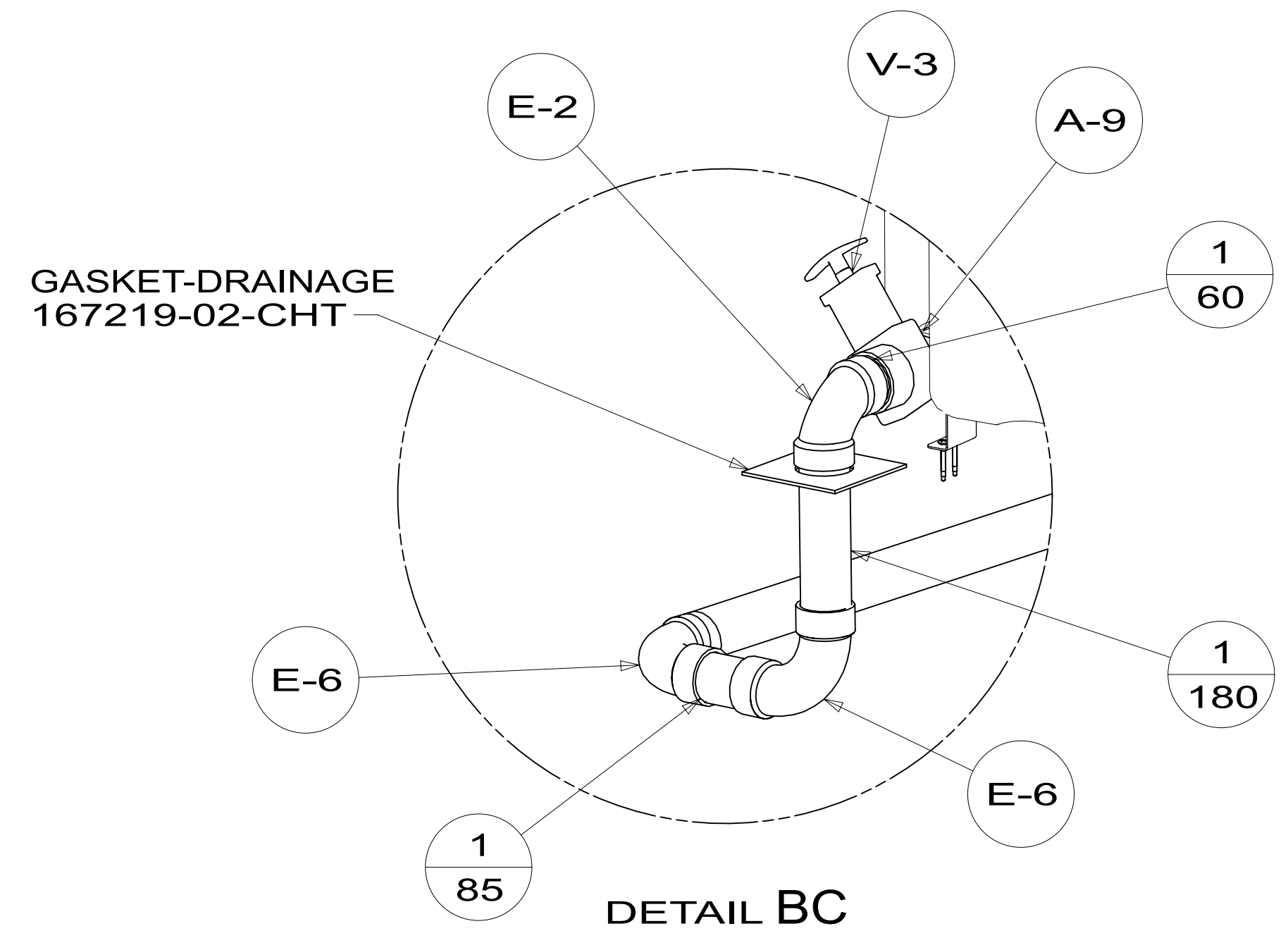
FOR
DRAINAGE
CALLOUTS
SEE DWG NO.
000211962 /
303370-01-000

WINNEBAGO COPYRIGHT 2023 WINNEBAGO INDUSTRIES, INC.		
DSNR:	ALL DIMENSIONS ARE IN MILLIMETERS	
DFTR:		
UNSPECIFIED TOLERANCES:	MATERIAL:	
WHOLE DIM (X) :	3	
ONE-PLACE (X.X) :	1.5	
TWO-PLACE (X.XX) :	0.50	
ANGLE :	1°	
REFER TO ES0018 FOR FASTENER TIGHTENING GUIDELINES	WEIGHT: (LBS)	FIRST USED: (REF)
		21 T36A
DESCRIPTION: DRAINAGE SYSTEM INSTL		
SHEET:	ITEM/PART NO:	REV:
1 OF 3	000214567 / 34103401000	
REF:		1 18-Jan-2023

8 7 6 5 4 3 2 1

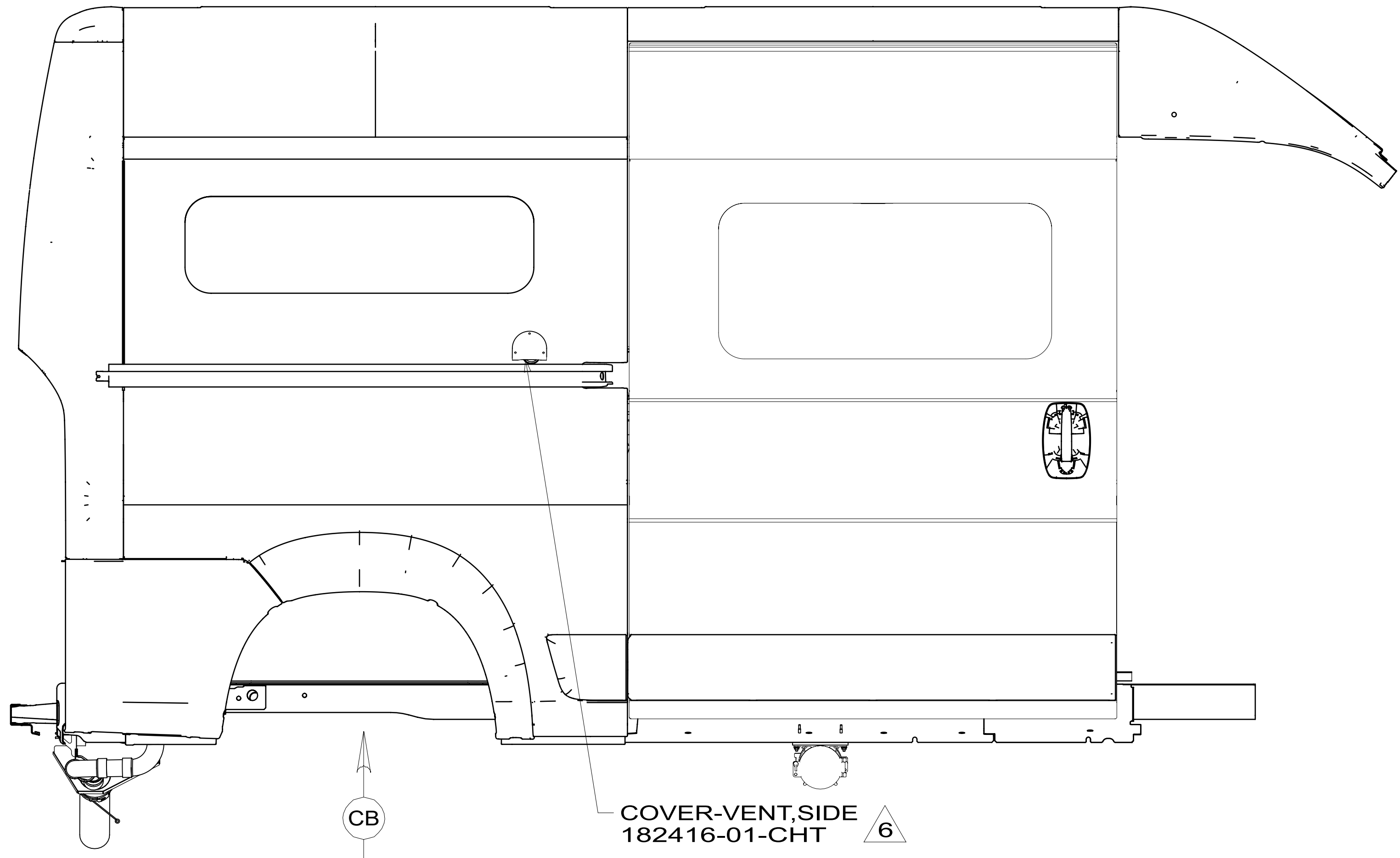
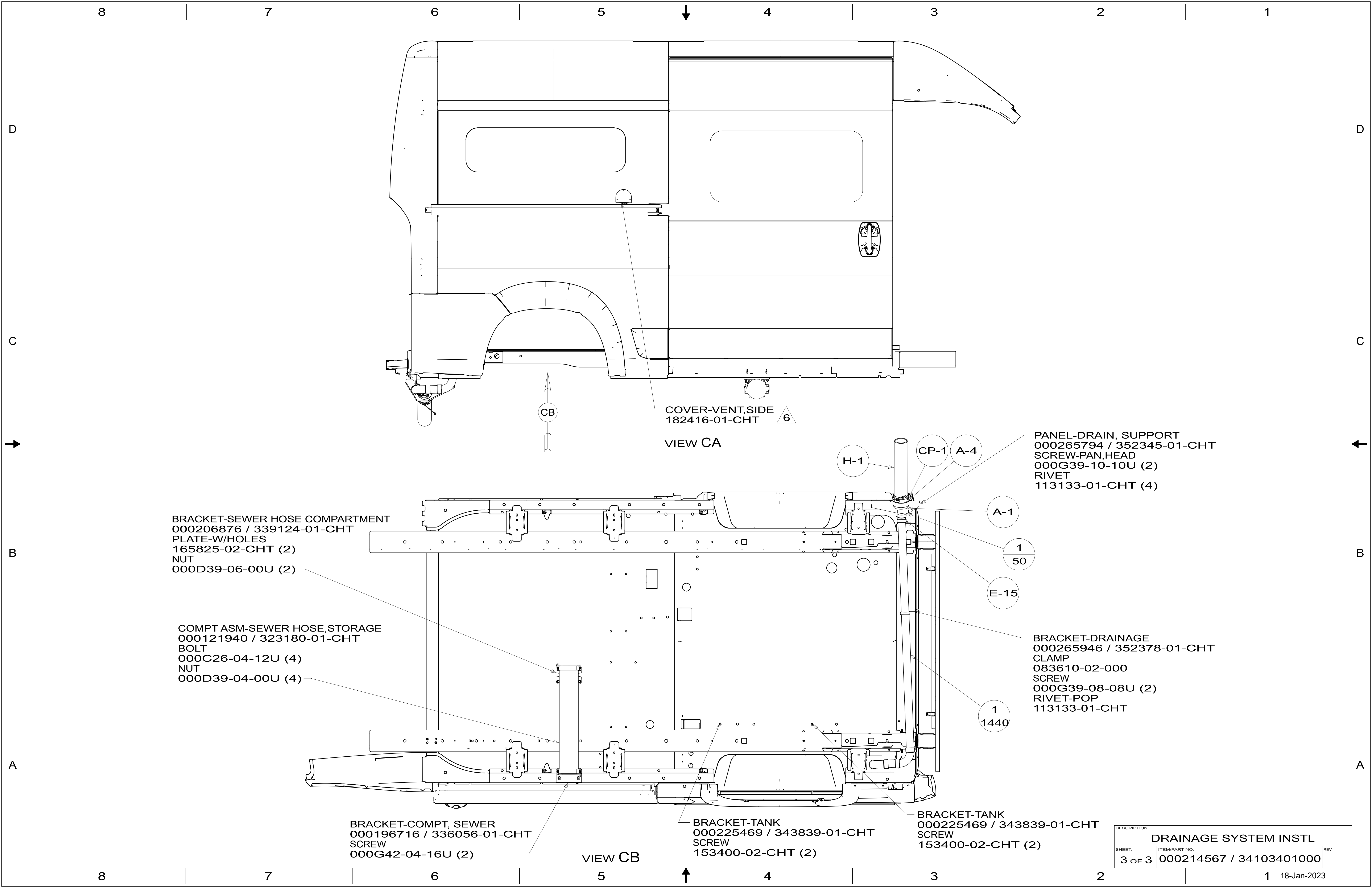
D
C
B
A

D
C
B
A

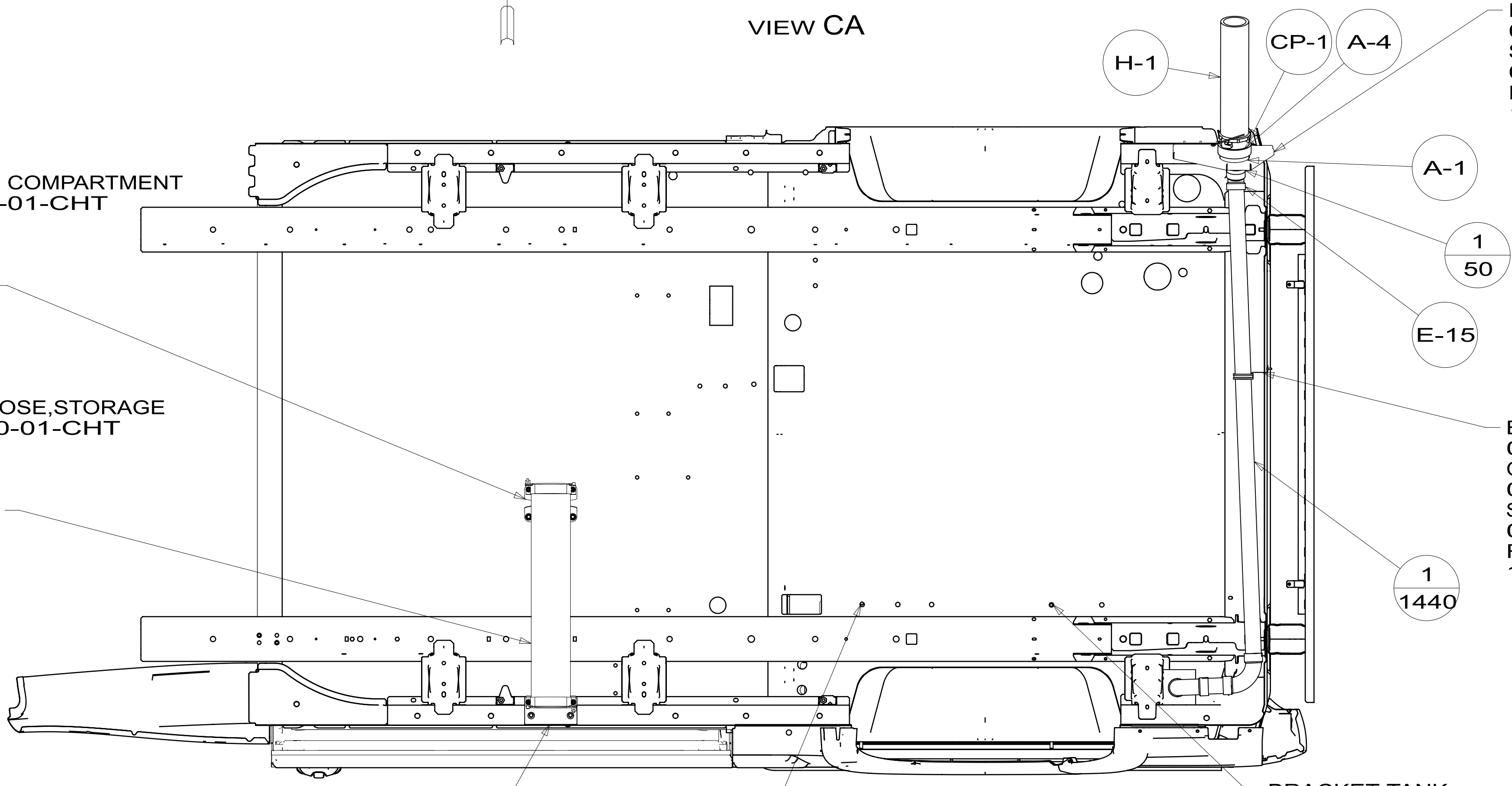


DESCRIPTION:		
DRAINAGE SYSTEM INSTL		
SHEET:	ITEM/PART NO.:	REV
2 OF 3	000214567 / 34103401000	

8 7 6 5 4 3 2 1 18-Jan-2023



COVER-VENT, SIDE
182416-01-CHT
VIEW CA



BRACKET-SEWER HOSE COMPARTMENT
000206876 / 339124-01-CHT
PLATE-W/HOLES
165825-02-CHT (2)
NUT
000D39-06-00U (2)

COMPT ASM-SEWER HOSE, STORAGE
000121940 / 323180-01-CHT
BOLT
000C26-04-12U (4)
NUT
000D39-04-00U (4)

BRACKET-COMPT, SEWER
000196716 / 336056-01-CHT
SCREW
000G42-04-16U (2)

VIEW CB

BRACKET-TANK
000225469 / 343839-01-CHT
SCREW
153400-02-CHT (2)

BRACKET-TANK
000225469 / 343839-01-CHT
SCREW
153400-02-CHT (2)

PANEL-DRAIN, SUPPORT
000265794 / 352345-01-CHT
SCREW-PAN.HEAD
000G39-10-10U (2)
RIVET
113133-01-CHT (4)

BRACKET-DRAINAGE
000265946 / 352378-01-CHT
CLAMP
083610-02-000
SCREW
000G39-08-08U (2)
RIVET-POP
113133-01-CHT

DESCRIPTION: DRAINAGE SYSTEM INSTL		
SHEET: 3 OF 3	ITEM/PART NO: 000214567 / 34103401000	REV