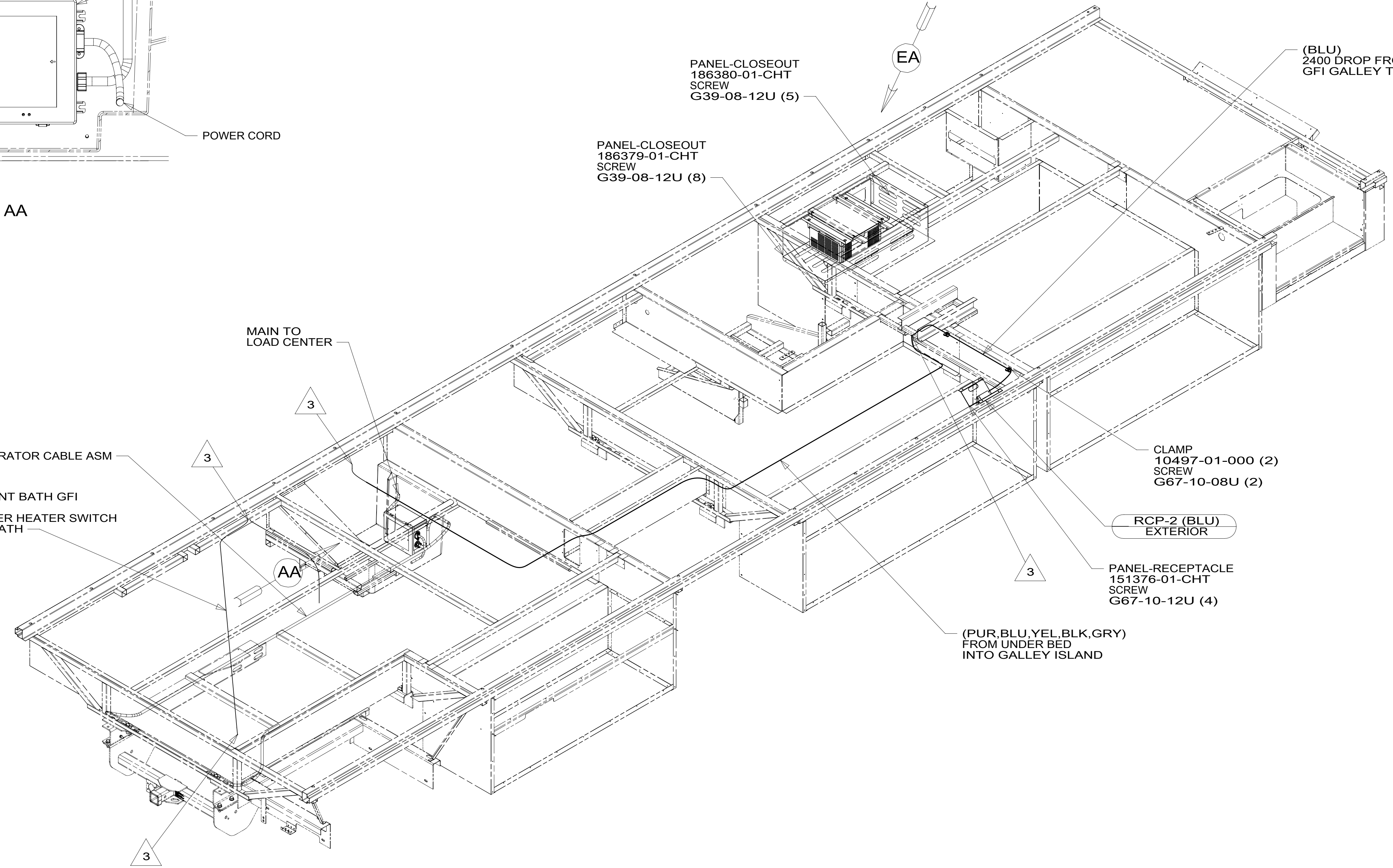


VIEW AA



- NOTES:
- 4 BRING EXCESS WIRE INTO COMPARTMENT TO PREVENT INTERFERENCE WITH CHASSIS COMPONENTS.
  - 3 WIRE ROUTED THROUGH FLOOR IN THIS AREA.
  - 2. WIRES ROUTED UNDER FLOOR.
  - 1. AT MINIMUM ALL WIRES TO BE SUPPORTED AND SECURED PER CODE REQUIREMENTS. USE CLAMP 10495 OR 10497 OR WIRE TIE 8343 OR 108046 AND SCREW G67-XX-XXX OR G56-XX-XXX AS APPROPRIATE FOR INSTALLATION.

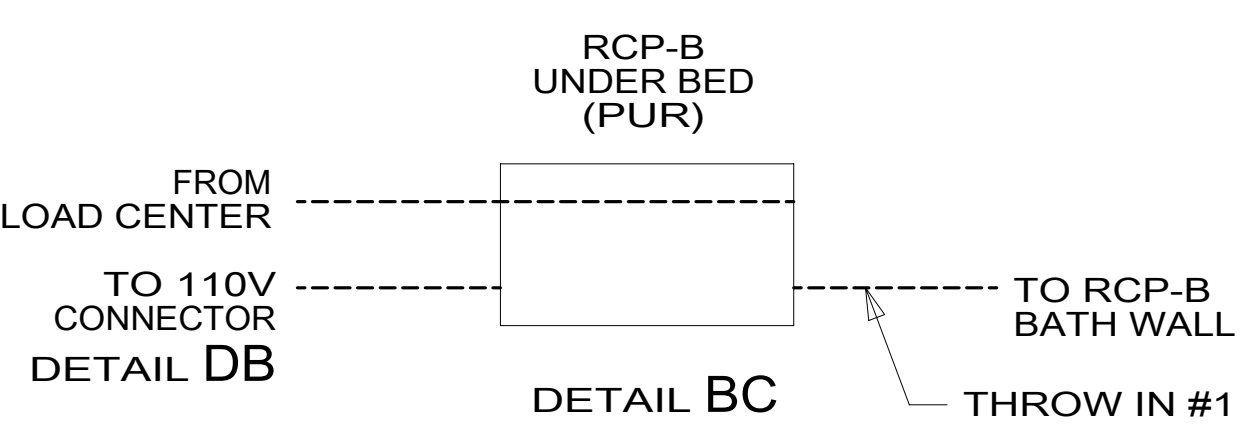
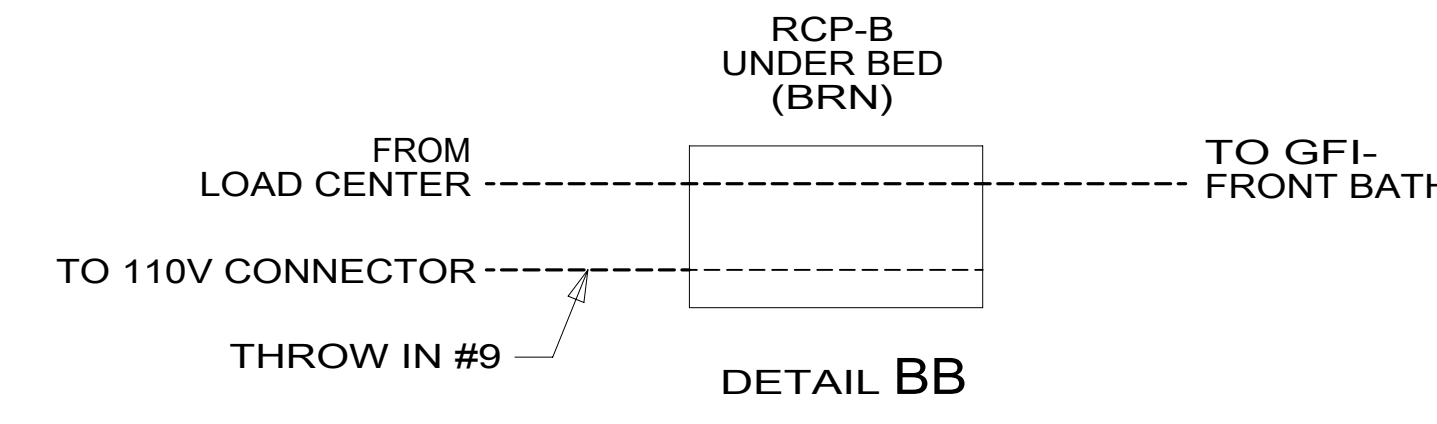
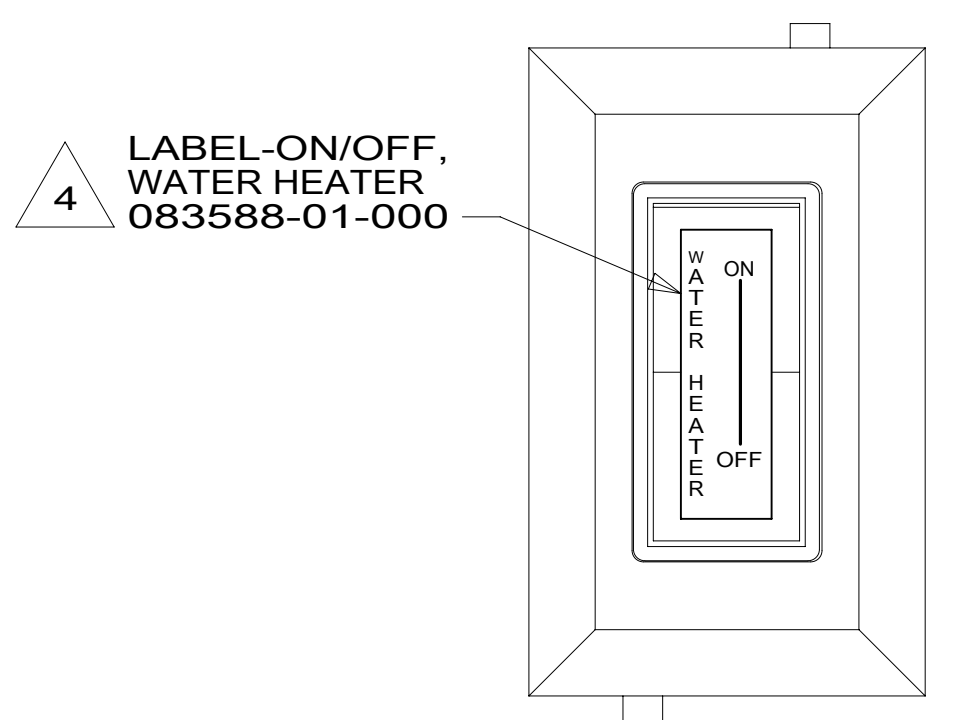
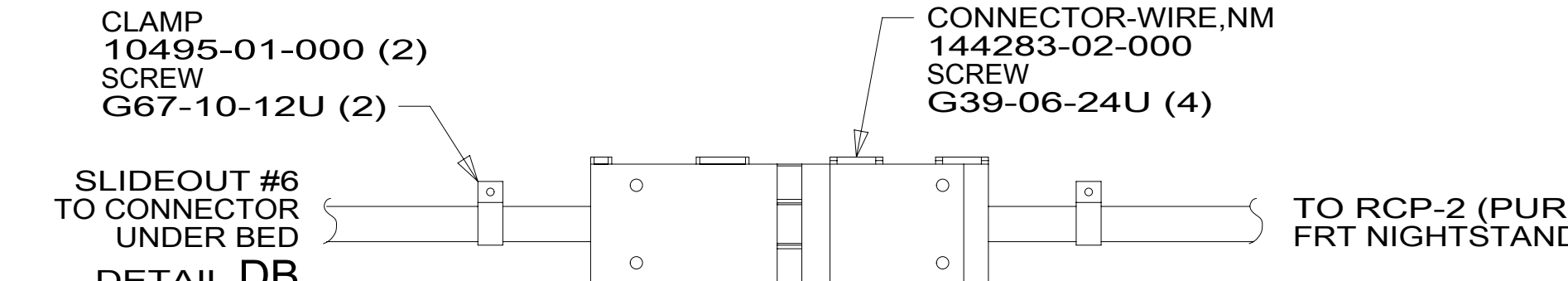
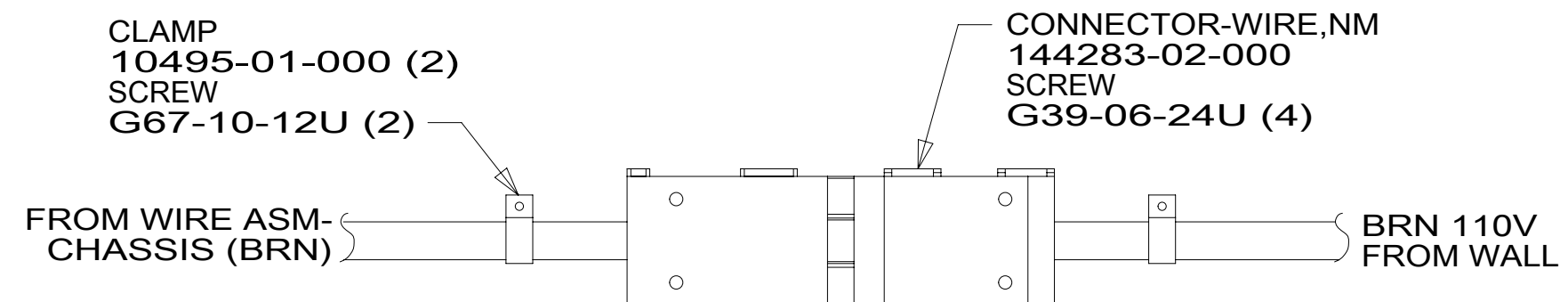
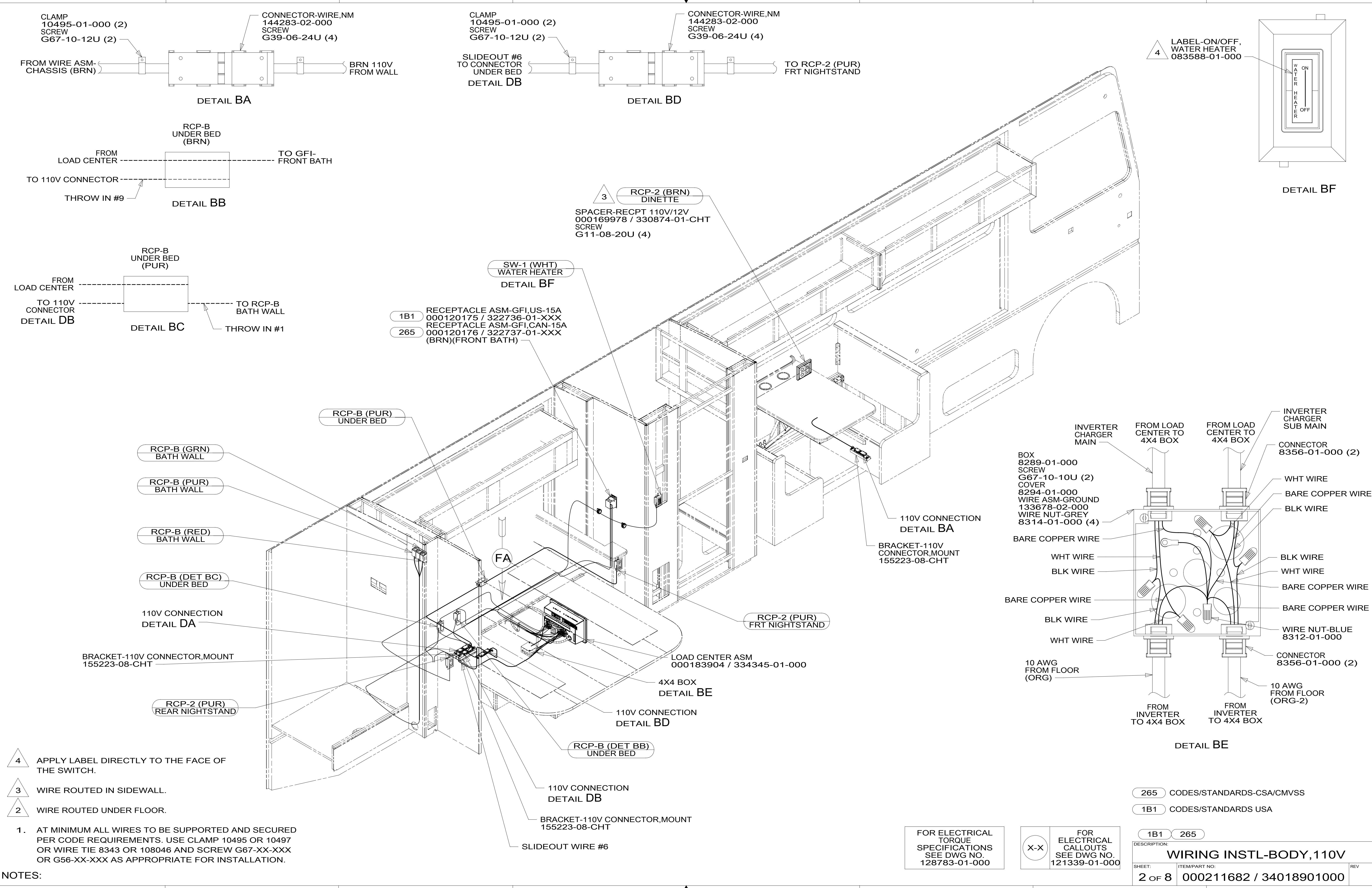
FOR ELECTRICAL TORQUE SPECIFICATIONS SEE DWG NO. 128783-01-000

FOR ELECTRICAL CALLOUTS SEE DWG NO. 121339-01-000

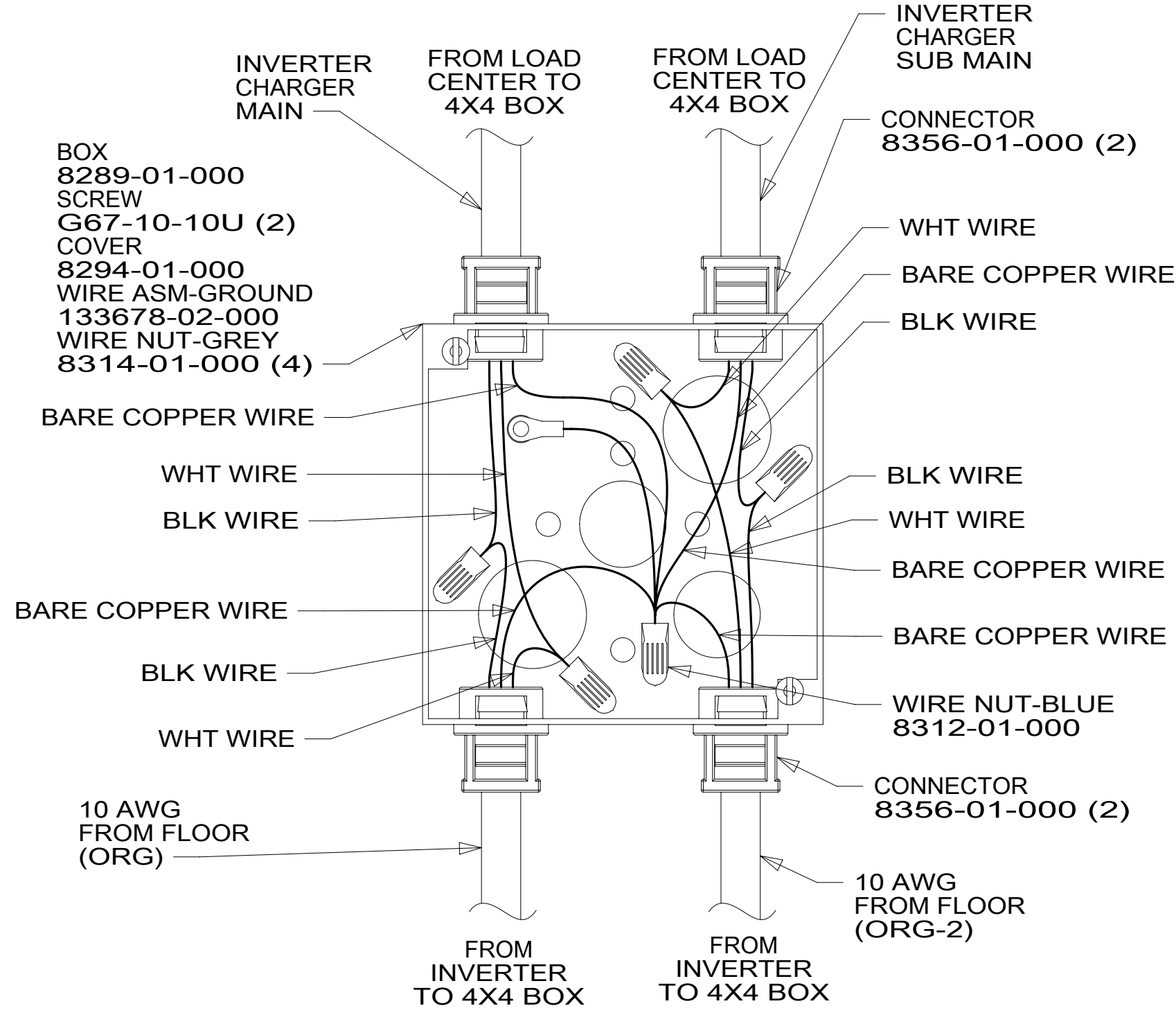
- 265 CODES/STANDARDS-CSA/CMVSS
- 1B1 CODES/STANDARDS USA
- 1B1 265

**WINNEBAGO**  
COPYRIGHT 2016 WINNEBAGO INDUSTRIES, INC.

DSNR:	ALL DIMENSIONS ARE IN MILLIMETERS
DFFR:	
UNSPECIFIED TOLERANCES:	MATERIAL:
WHOLE DIM (X) : 3	
ONE-PLACE (X.X) : 1.5	
TWO-PLACE (X.XX) : 0.50	
ANGLE : 1°	
REFER TO ES0018 FOR FASTENER TIGHTENING GUIDELINES	WEIGHT: (LBS) FIRST USED: 21 F36Z
<b>DESCRIPTION:</b> WIRING INSTL-BODY, 110V	
SHEET: 1 OF 8	ITEM/PART NO: 000211682 / 34018901000
REF:	1 28-Apr-2021



- 1B1 RECEPTACLE ASM-GFI,US-15A  
000120175 / 322736-01-XXX
- 265 RECEPTACLE ASM-GFI,CAN-15A  
000120176 / 322737-01-XXX  
(BRN)(FRONT BATH)

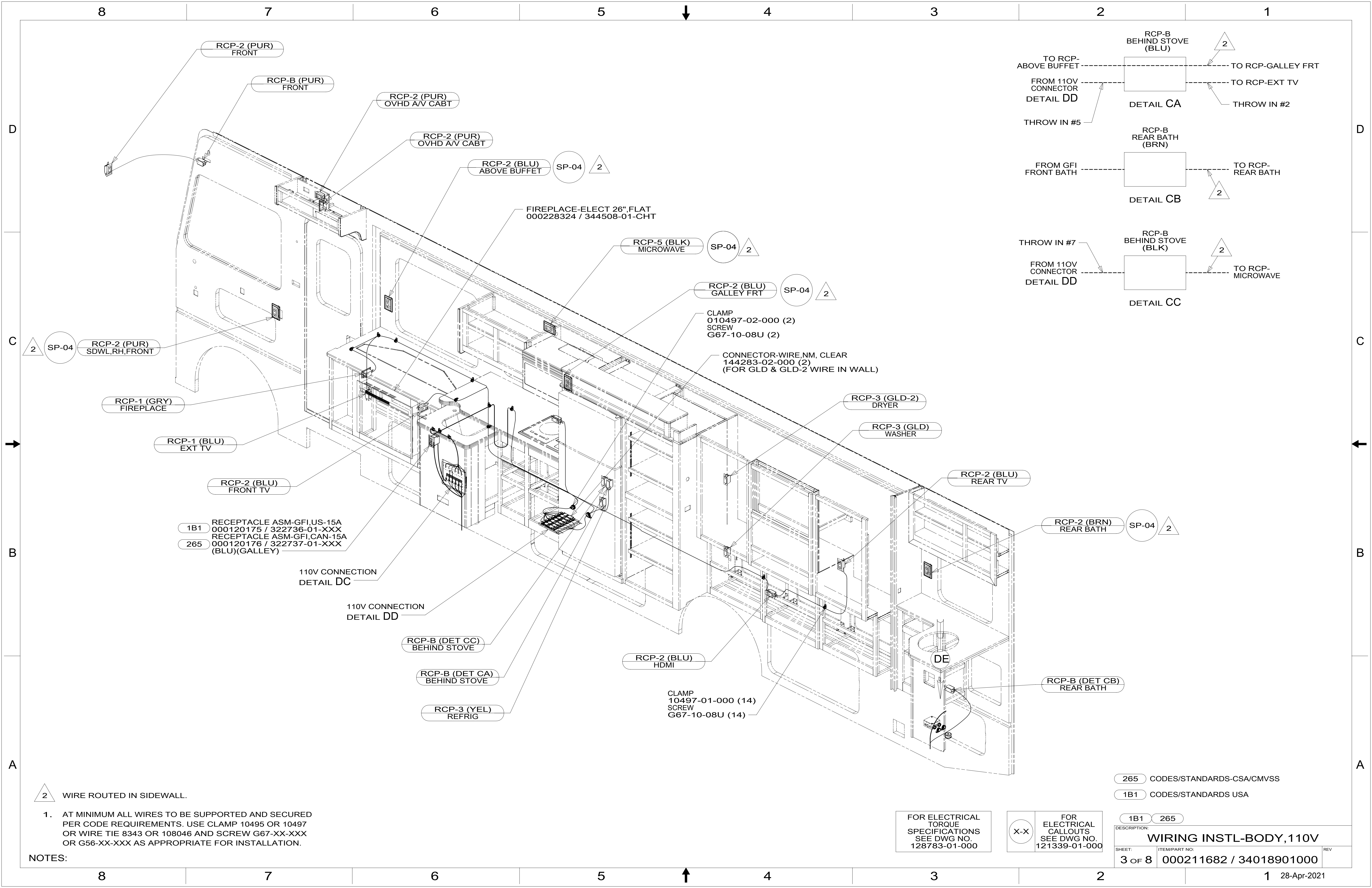


- NOTES:
- 4 APPLY LABEL DIRECTLY TO THE FACE OF THE SWITCH.
  - 3 WIRE ROUTED IN SIDEWALL.
  - 2 WIRE ROUTED UNDER FLOOR.
  - 1. AT MINIMUM ALL WIRES TO BE SUPPORTED AND SECURED PER CODE REQUIREMENTS. USE CLAMP 10495 OR 10497 OR WIRE TIE 8343 OR 108046 AND SCREW G67-XX-XXX OR G56-XX-XXX AS APPROPRIATE FOR INSTALLATION.

FOR ELECTRICAL TORQUE SPECIFICATIONS SEE DWG NO. 128783-01-000

FOR ELECTRICAL CALLOUTS SEE DWG NO. 121339-01-000

265	CODES/STANDARDS-CSA/CMVSS
1B1	CODES/STANDARDS USA
1B1	265
DESCRIPTION: <b>WIRING INSTL-BODY, 110V</b>	
SHEET: 2 OF 8	ITEM/PART NO: 000211682 / 34018901000
REV 1 28-Apr-2021	



2 WIRE ROUTED IN SIDEWALL.

1. AT MINIMUM ALL WIRES TO BE SUPPORTED AND SECURED PER CODE REQUIREMENTS. USE CLAMP 10495 OR 10497 OR WIRE TIE 8343 OR 108046 AND SCREW G67-XX-XXX OR G56-XX-XXX AS APPROPRIATE FOR INSTALLATION.

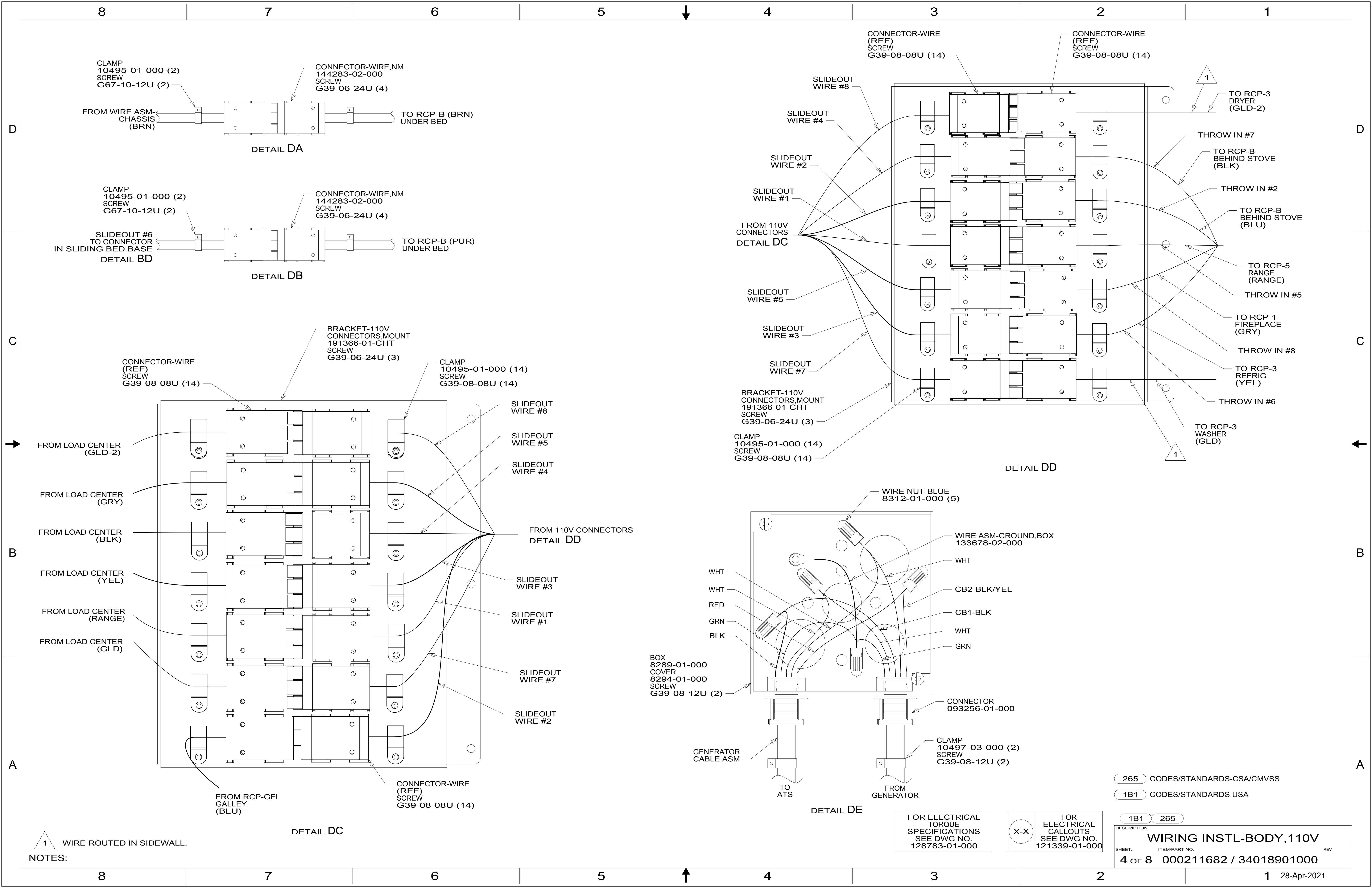
NOTES:

265 CODES/STANDARDS-CSA/CMVSS  
 1B1 CODES/STANDARDS USA

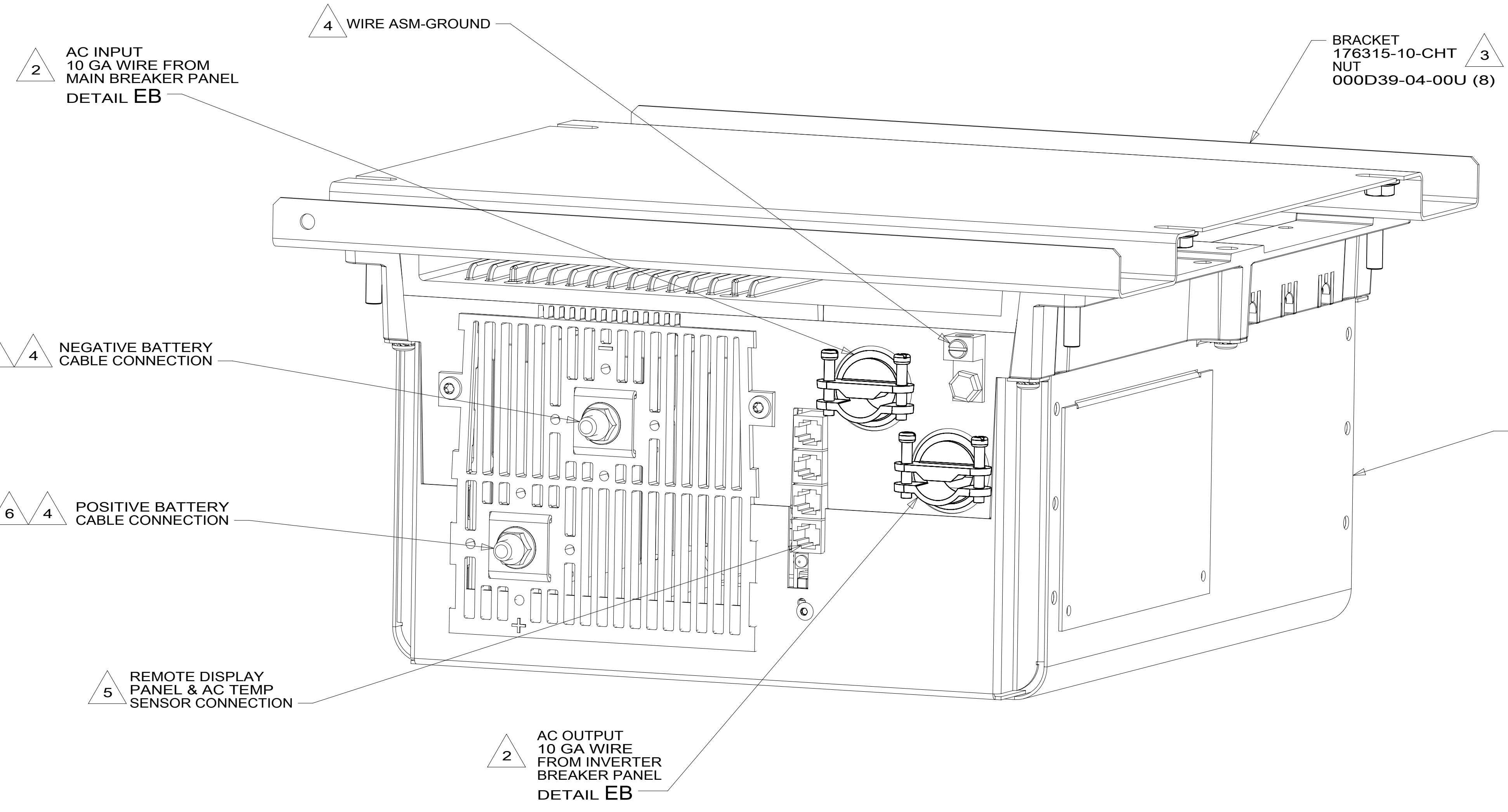
FOR ELECTRICAL TORQUE SPECIFICATIONS SEE DWG NO. 128783-01-000

X-X FOR ELECTRICAL CALLOUTS SEE DWG NO. 121339-01-000

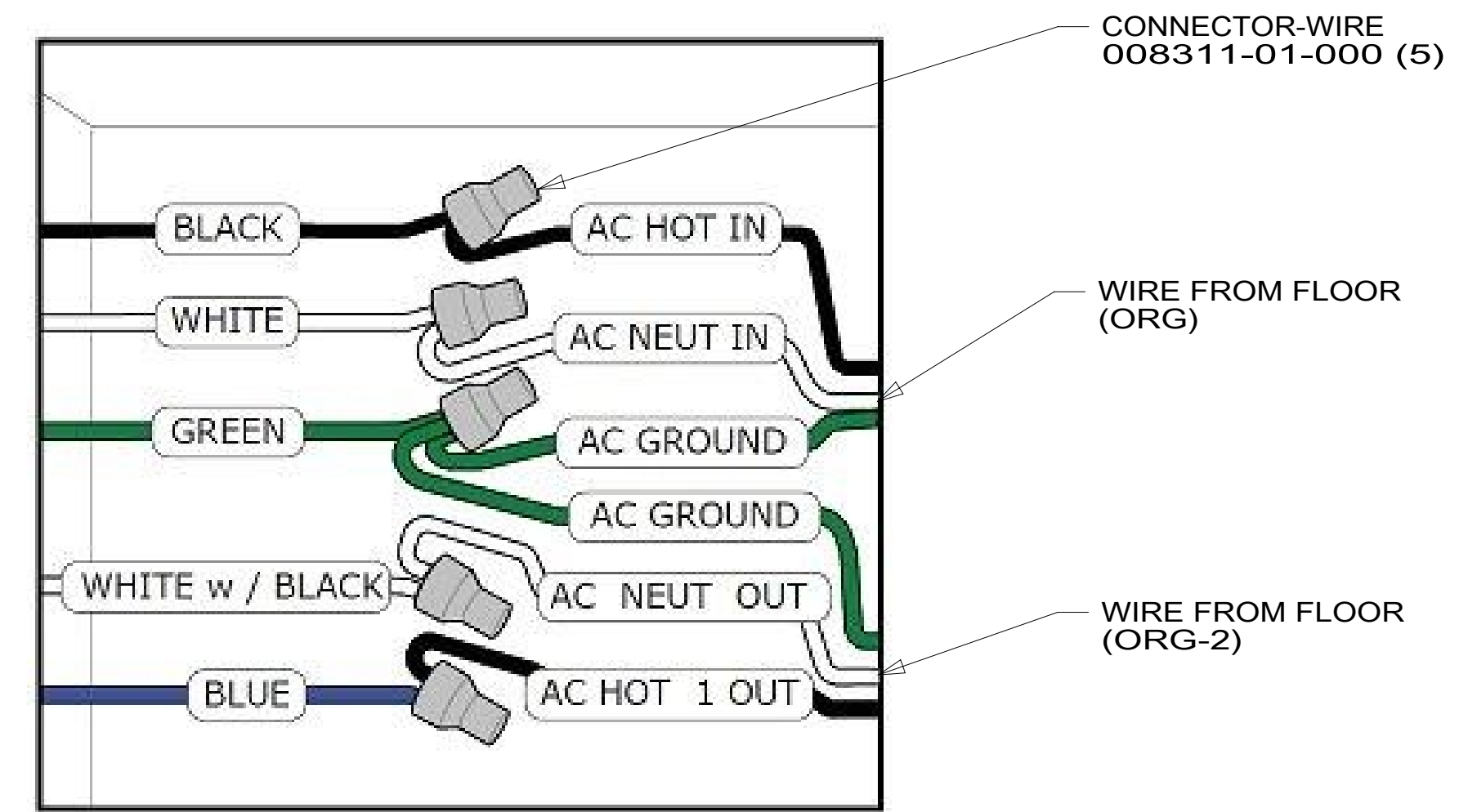
DESCRIPTION:	1B1 265	
<b>WIRING INSTL-BODY, 110V</b>		
SHEET:	ITEM/PART NO.:	REV
3 OF 8	000211682 / 34018901000	



8 7 6 5 4 3 2 1



DETAIL EA



DETAIL EB

- 6 DO NOT USE POWER/AIR TOOL IN INSTALL NUT. TORQUE TO 10-12 FT LBS.
- 5 CABLES PART OF WIR ASM-CHASSIS.
- 4 SEE BATTERY INSTL FOR ADDITIONAL INFORMATION.
- 3 BRACKET IS LOCATED BY HOLES ON BRACKET.
- 2 SEE LOAD CENTER/ATS ASM FOR ADDITIONAL INFORMATION.

NOTES:  
1. SEE INVERTER/CHARGER OWNER'S MANUAL FOR ADDITIONAL INFORMATION.

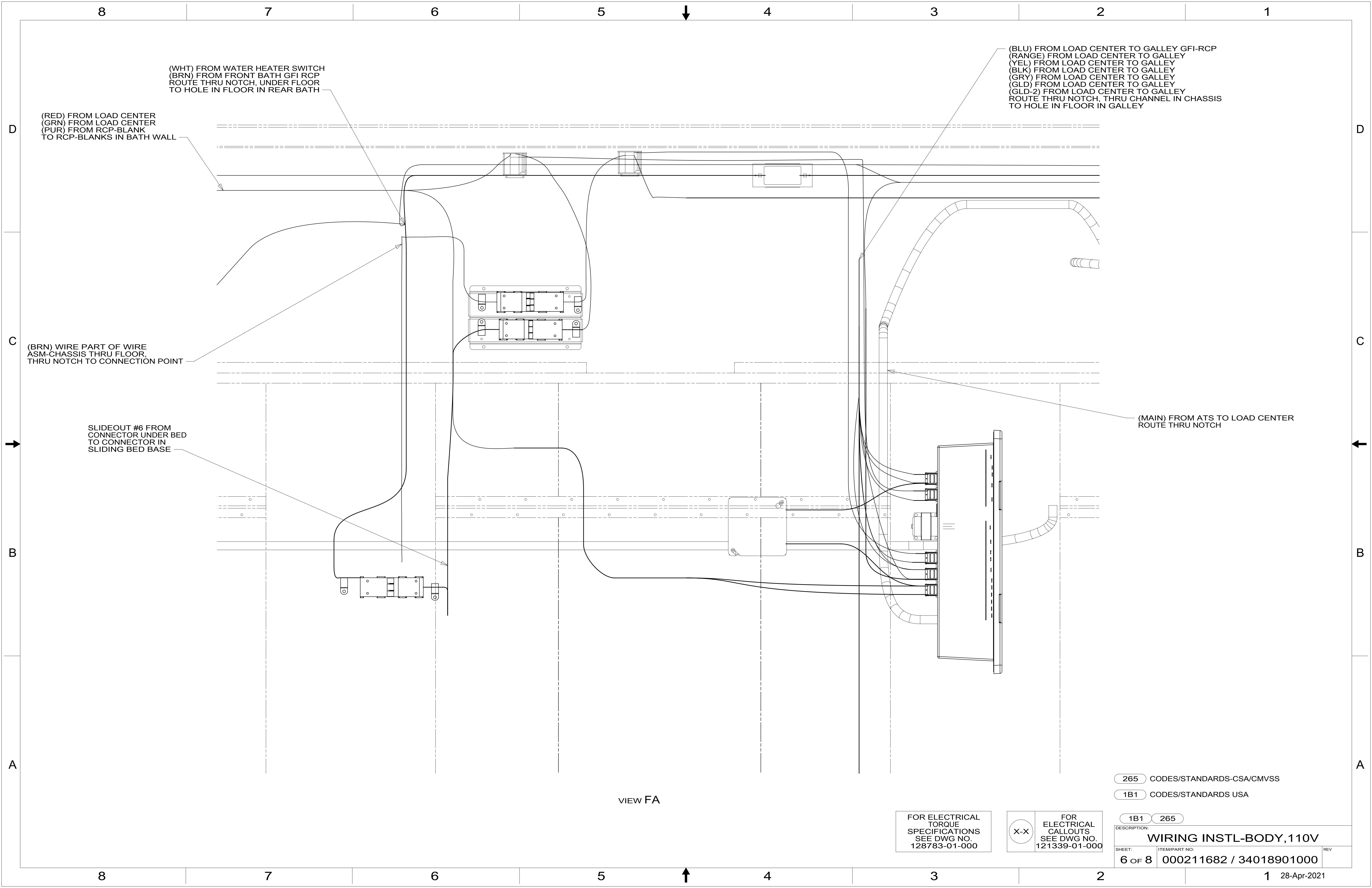
265 CODES/STANDARDS-CSA/CMVSS  
1B1 CODES/STANDARDS USA

FOR ELECTRICAL  
TORQUE  
SPECIFICATIONS  
SEE DWG NO.  
128783-01-000

X-X  
FOR ELECTRICAL  
CALLOUTS  
SEE DWG NO.  
121339-01-000

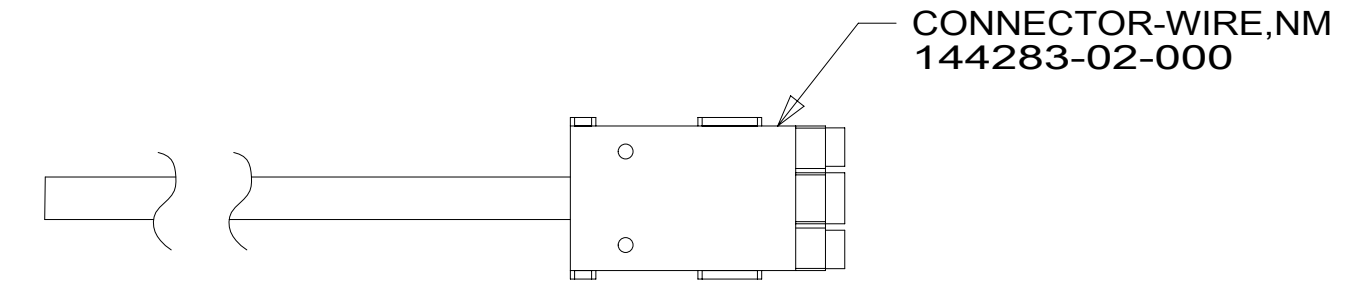
DESCRIPTION:	1B1 265	
<b>WIRING INSTL-BODY, 110V</b>		
SHEET:	ITEM/PART NO:	REV
5 OF 8	000211682 / 34018901000	

8 7 6 5 4 3 2 1 28-Apr-2021

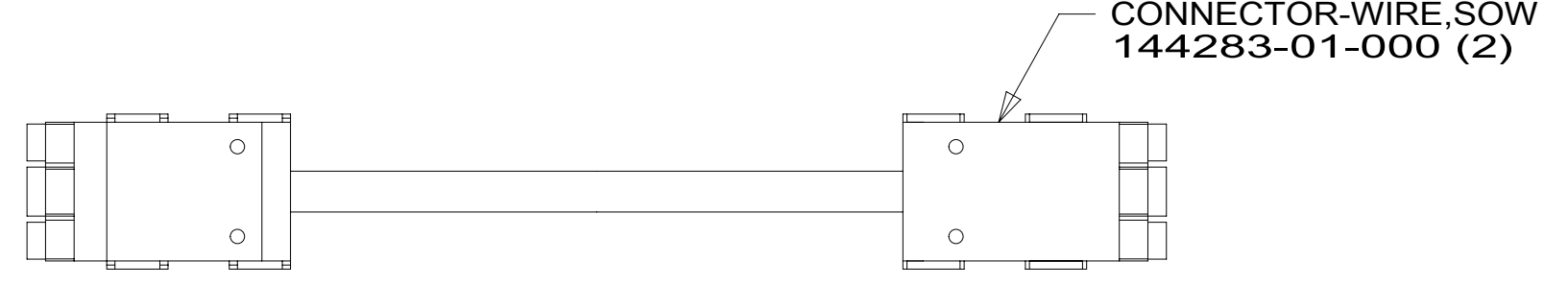


RED	1B1	136135-07-060	2
	265	136136-07-060	
YEL	1B1	136131-05-075	2
	265	136134-05-075	
BLK	1B1	136135-06-075	2
	265	136136-06-075	
BRN	1B1	136131-03-120	2
	265	136134-03-120	
BLU	1B1	136131-02-087	2
	265	136134-02-087	
GRN	1B1	136135-08-060	2
	265	136136-08-060	
PUR	1B1	136131-04-024	2
	265	136134-04-024	
WHT	1B1	136131-09-115	2
	265	136134-09-115	
MAIN	1B1	176841-01-032	2
	265	176841-01-032	
GROUND MAIN		136145-01-037	
GROUND ATS		136145-01-017	
GRY	1B1	136131-15-077	2
	265	136134-15-077	
GLD	1B1	136131-10-077	2
	265	136134-10-077	
INVERTER CHARGER MAIN	1B1	136137-01-012	2
	265	136138-01-012	
INVERTER CHARGER SUB MAIN	1B1	136137-01-012	2
	265	139138-01-012	
GLD-2	1B1	136131-20-077	2
	265	136134-20-077	
GENERATOR CABLE ASM		174762-01-054	

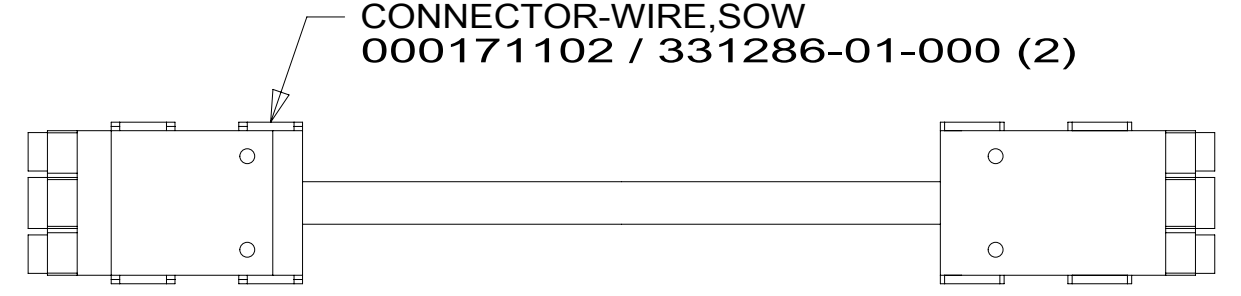
SLIDEOUT WIRE #1		136152-01-050	4
SLIDEOUT WIRE #2		136151-02-050	3
SLIDEOUT WIRE #3		136151-05-050	3
SLIDEOUT WIRE #4		136152-06-050	4
SLIDEOUT WIRE #5		136151-15-050	3
SLIDEOUT WIRE #6		136151-04-012	3
SLIDEOUT WIRE #7		136151-10-050	3
SLIDEOUT WIRE #8		136151-20-050	3
THROW IN WIRE #1	1B1	136131-04-047	2
	265	136134-04-047	
THROW IN WIRE #2	1B1	136131-02-166	2
	265	136134-02-166	
THROW IN WIRE #3	1B1	136131-04-014	2
	265	136134-04-014	
THROW IN WIRE #4	1B1	136131-02-032	2
	265	136134-02-032	
THROW IN WIRE #5	1B1	136135-01-022	2
	265	136136-01-022	
THROW IN WIRE #6	1B1	136131-05-011	2
	265	136134-05-011	
THROW IN WIRE #7	1B1	136135-06-013	2
	265	136136-06-013	
THROW IN WIRE #8	1B1	136131-15-051	2
	265	136134-15-051	
THROW IN WIRE #9	1B1	136131-03-007	2
	265	136134-03-007	
THROW IN WIRE #10	1B1	136131-04-037	2
	265	136134-04-037	
THROW IN WIRE #11	1B1	136131-04-025	2
	265	136134-04-025	
RANGE	1B1	136135-01-077	2
	265	136136-01-077	



DETAIL GA



DETAIL GB



DETAIL GC

- 4 SEE DETAIL GC FOR CONNECTOR INSTALLATION.
- 3 SEE DETAIL GB FOR CONNECTOR INSTALLATION.
- 2 SEE DETAIL GA FOR CONNECTOR INSTALLATION.

1. ALL GROUNDS WIRES TO BE COVERED WITH TUBING 8041-02-000.

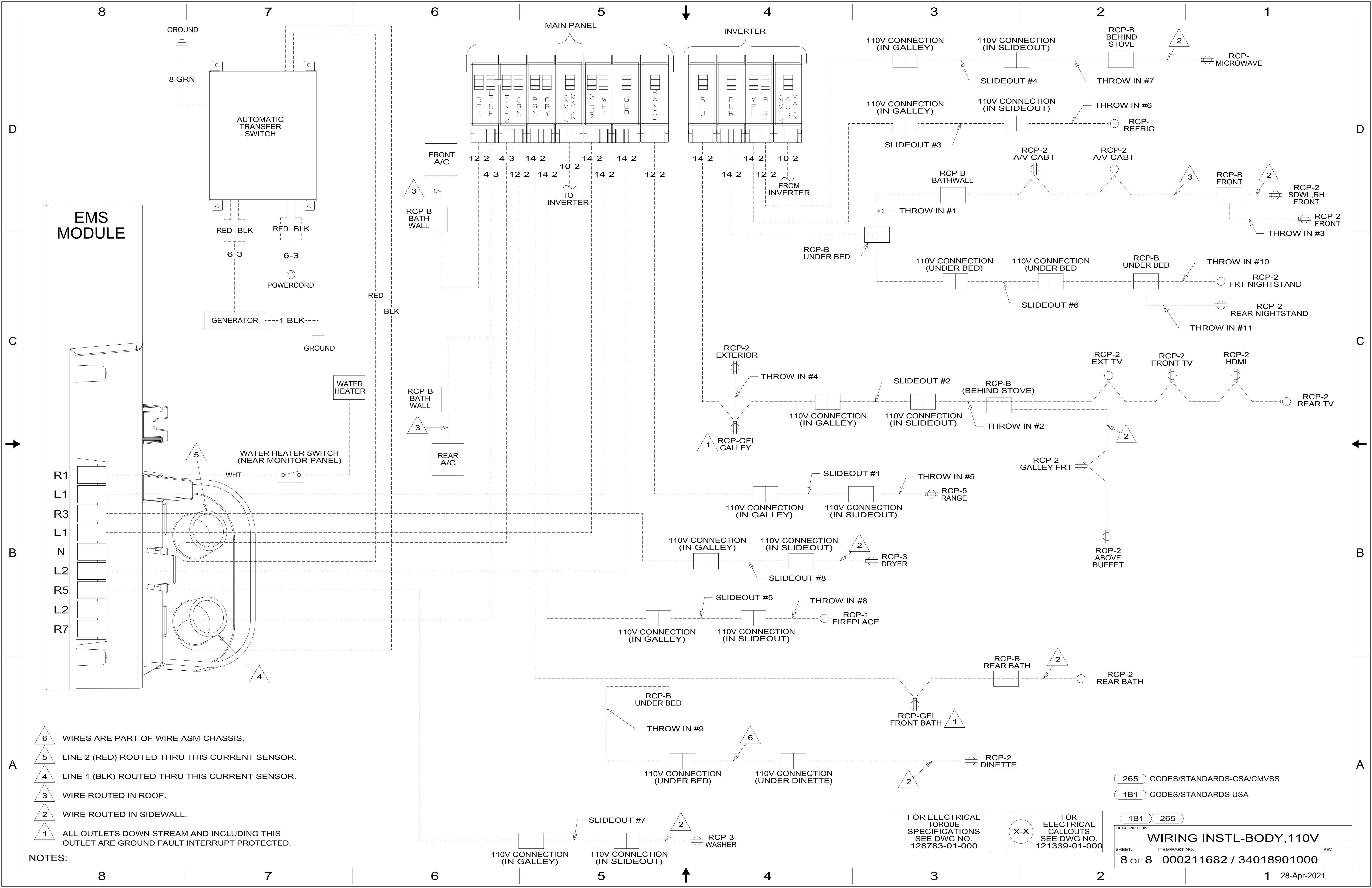
NOTES:

265 CODES/STANDARDS-CSA/CMVSS  
 1B1 CODES/STANDARDS USA

FOR ELECTRICAL TORQUE SPECIFICATIONS SEE DWG NO. 128783-01-000

FOR ELECTRICAL CALLOUTS SEE DWG NO. 121339-01-000

DESCRIPTION:	1B1 265	
<b>WIRING INSTL-BODY, 110V</b>		
SHEET:	ITEM/PART NO.:	REV:
7 OF 8	000211682 / 34018901000	



- NOTES:
- 6 WIRES ARE PART OF WIRE ASM-CHASSIS.
  - 5 LINE 2 (RED) ROUTED THRU THIS CURRENT SENSOR.
  - 4 LINE 1 (BLK) ROUTED THRU THIS CURRENT SENSOR.
  - 3 WIRE ROUTED IN ROOF.
  - 2 WIRE ROUTED IN SIDEWALL.
  - 1 ALL OUTLETS DOWN STREAM AND INCLUDING THIS OUTLET ARE GROUND FAULT INTERRUPT PROTECTED.

265 CODES/STANDARDS-CSA/CMVSS  
 1B1 CODES/STANDARDS USA

FOR ELECTRICAL TORQUE SPECIFICATIONS SEE DWG NO. 128783-01-000

X-X FOR ELECTRICAL CALLOUTS SEE DWG NO. 121339-01-000

DESCRIPTION:		<b>WIRING INSTL-BODY, 110V</b>	
SHEET:	ITEM/PART NO.:	REV	
8 OF 8	000211682 / 34018901000		