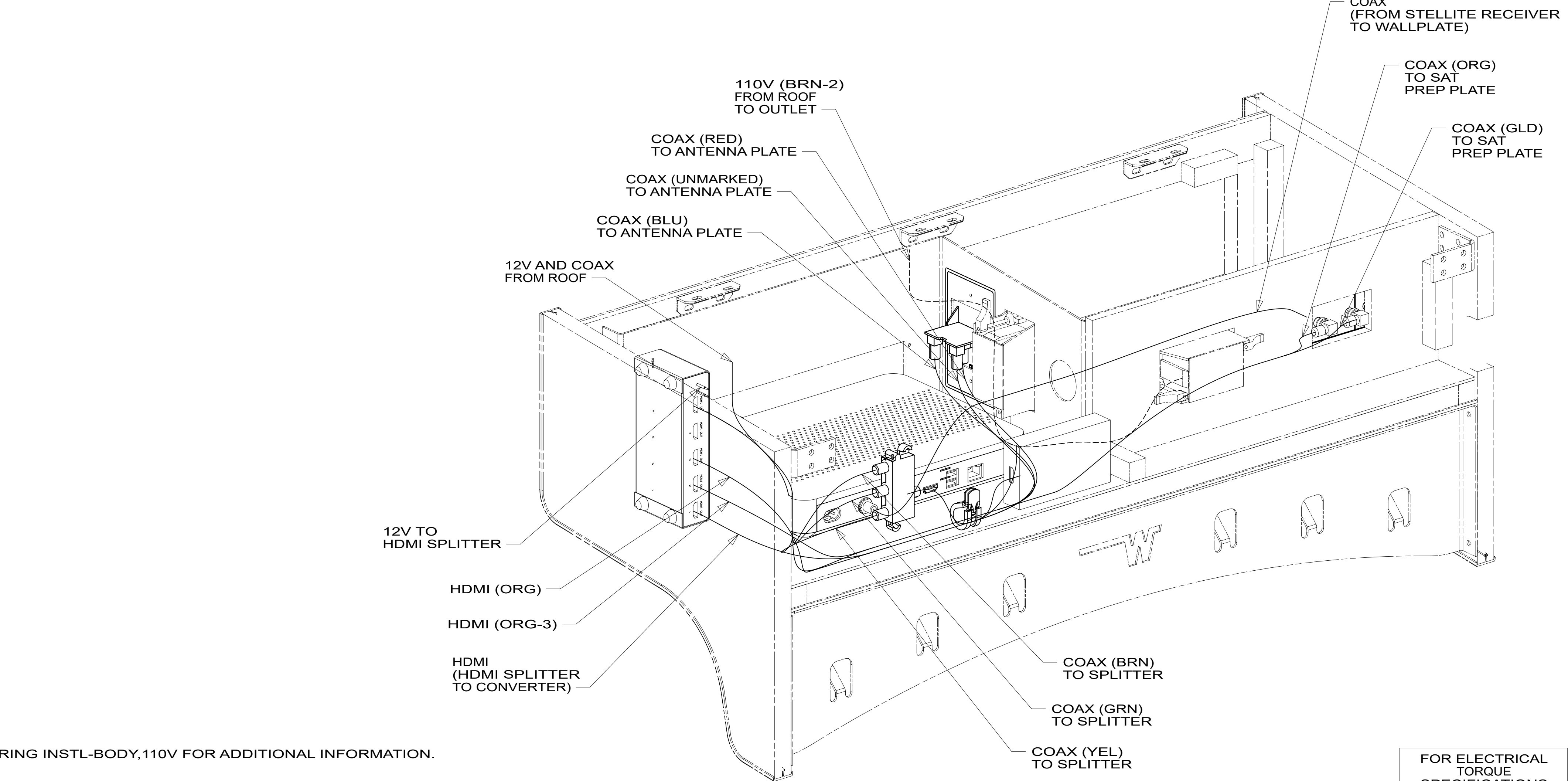
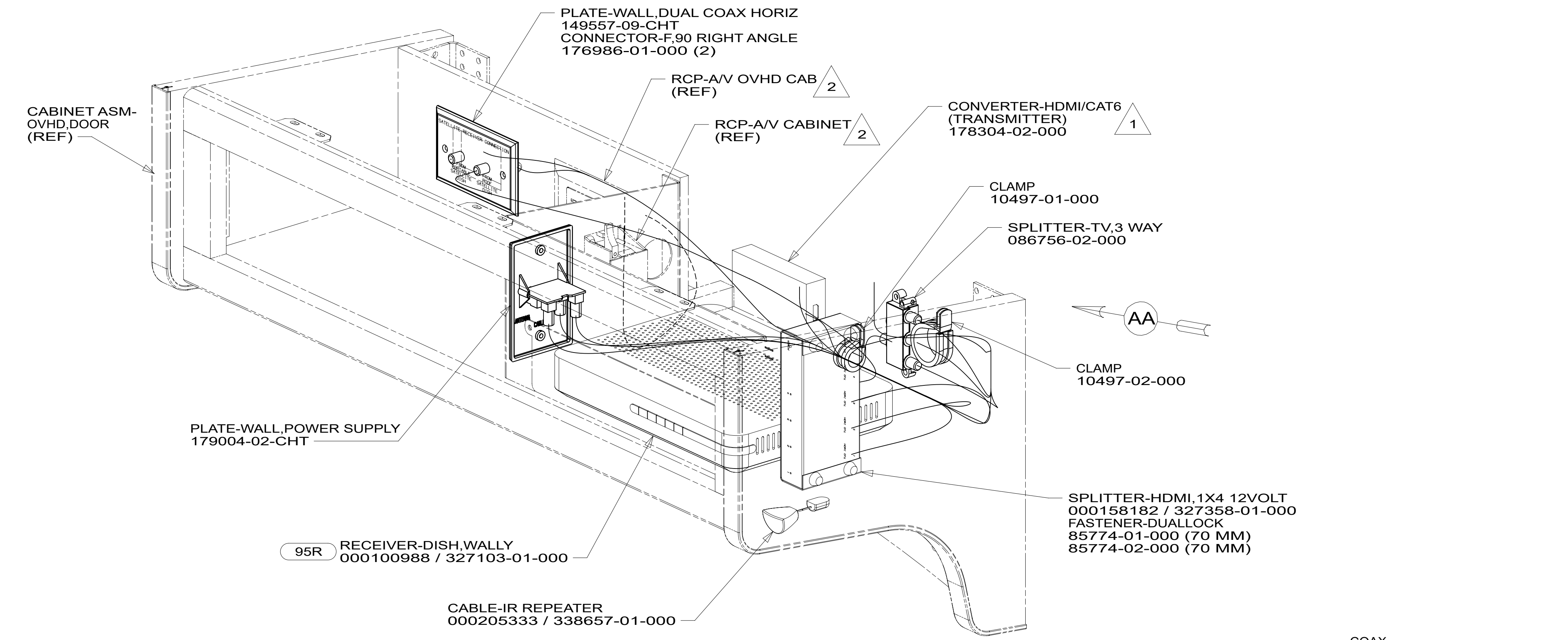


8 7 6 5 4 3 2 1



2 SEE WIRING INSTL-BODY,110V FOR ADDITIONAL INFORMATION.  
 1 ATTACH TO STICK WORK USING BRACKETS AND SCREWS THAT COME WITH CONVERTER.

FOR ELECTRICAL TORQUE SPECIFICATIONS SEE DWG NO. 128783-01-000

FOR ELECTRICAL CALLOUTS SEE DWG 000228177 344479-01-000

- 95R SATALLITE TV ANTENNA - AUTOM
- 265 CODES/STANDARDS-CSA/CMVSS
- 1B1 CODES/STANDARDS USA

<b>WINNEBAGO</b> COPYRIGHT 2016 WINNEBAGO INDUSTRIES, INC.	
DSNR:	ALL DIMENSIONS ARE IN MILLIMETERS
DfTR:	MATERIAL:
UNSPECIFIED TOLERANCES:	
WHOLE DIM (X) :	3
ONE-PLACE (X.X) :	1.5
TWO-PLACE (X.XX) :	0.50
ANGLE :	1°
REFER TO ES0018 FOR FASTENER TIGHTENING GUIDELINES	WEIGHT: (LBS) FIRST USED: <b>21 F29B</b>
<b>DESCRIPTION:</b> <b>WIRING INSTL-TV/DVD</b>	
SHEET: <b>1 OF 5</b>	ITEM/PART NO.: <b>000210690 / 33997101000</b>
REF:	REV:

VIEW AA

8 7 6 5 4 3 2 1

SIDEWALL  
ASM-RIGHT  
(REF)

CABINET  
ASM-BATH  
(REF)

BRACKET-MNTG,TV,40"INSIG  
000033931 / 317678-01-CHT  
SCREW  
G39-08-12U (5)

TV-39", INSIGNIA  
000247075/349369-01-000  
SCREW  
OMG02U-06-010 (4)

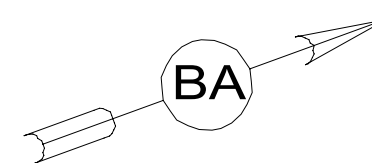
CLIP-TRIM  
130034-01-CHT  
SCREW  
G39-08-12U (4)

SIDEWALL  
ASM-RIGHT  
(REF)

328

244

VIEW BA  
(TV NOT SHOWN)



COOKTOP

GALLEY CABINET

CONVERTER-HDMI/CAT5X1  
(REF)

- NOTES:
1. 110V WIRE TO BE CLAMPED WITH CLAMP 10497-05-000 WITHIN 200MM OF OUTLET BOXES, USE SCREW G67-10-12B.
  2. ALL WIRES TO BE SECURED WITH CLAMP 10495-01-000 OR CLIP 80734-01-000 EVERY 600MM. USE SCREW G67-10-12B UNLESS OTHERWISE SPECIFIED.
  3. WHERE WIRES PASS THROUGH HOLES IN STEEL AND NOT OTHERWISE PROTECTED, USE GROMMET 92908-02-000.

FOR ELECTRICAL  
TORQUE  
SPECIFICATIONS  
SEE DWG NO.  
128783-01-000

FOR  
ELECTRICAL  
CALLOUTS SEE  
DWG 000228177  
344479-01-000

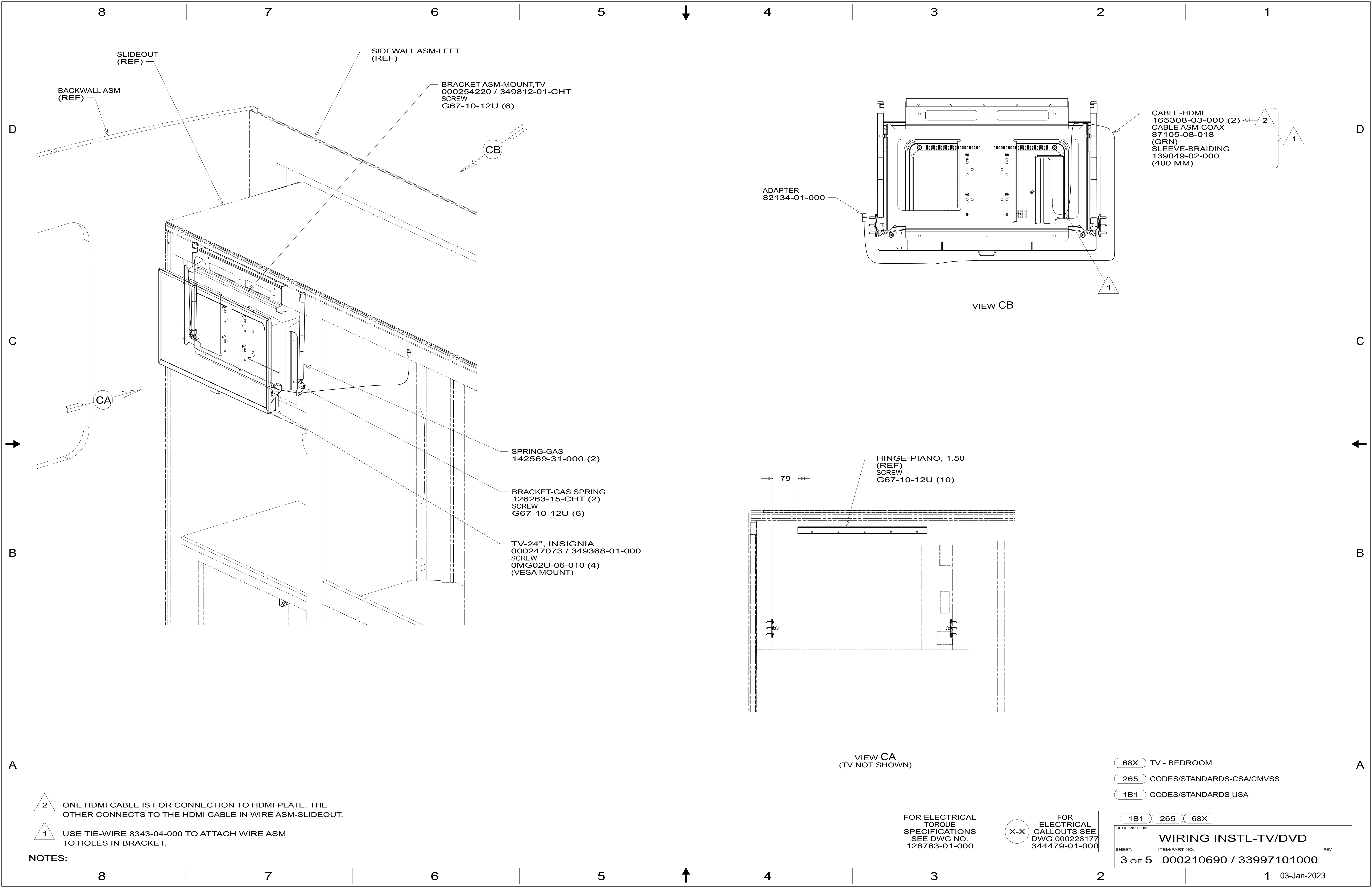
265 CODES/STANDARDS-CSA/CMVSS

1B1 CODES/STANDARDS USA

1B1 265

DESCRIPTION:  
**WIRING INSTL-TV/DVD**

SHEET: 2 OF 5 ITEM/PART NO: 000210690 / 33997101000 REV



BACKWALL ASM  
(REF)

SLIDEOUT  
(REF)

SIDEWALL ASM-LEFT  
(REF)

BRACKET ASM-MOUNT.TV  
000254220 / 349812-01-CHT  
SCREW  
G67-10-12U (6)

CB

ADAPTER  
82134-01-000

CABLE-HDMI  
165308-03-000 (2) ← 2  
CABLE ASM-COAX  
87105-08-018  
(GRN)  
SLEEVE-BRAIDING  
139049-02-000  
(400 MM) } 1

VIEW CB

SPRING-GAS  
142569-31-000 (2)

BRACKET-GAS SPRING  
126263-15-CHT (2)  
SCREW  
G67-10-12U (6)

TV-24", INSIGNIA  
000247073 / 349368-01-000  
SCREW  
0MG02U-06-010 (4)  
(VESA MOUNT)

HINGE-PIANO, 1.50  
(REF)  
SCREW  
G67-10-12U (10)

79

VIEW CA  
(TV NOT SHOWN)

2 ONE HDMI CABLE IS FOR CONNECTION TO HDMI PLATE. THE OTHER CONNECTS TO THE HDMI CABLE IN WIRE ASM-SLIDEOUT.

1 USE TIE-WIRE 8343-04-000 TO ATTACH WIRE ASM TO HOLES IN BRACKET.

NOTES:

- 68X TV - BEDROOM
- 265 CODES/STANDARDS-CSA/CMVSS
- 1B1 CODES/STANDARDS USA

FOR ELECTRICAL TORQUE SPECIFICATIONS SEE DWG NO. 128783-01-000

FOR ELECTRICAL CALLOUTS SEE DWG 000228177 344479-01-000

DESCRIPTION:	1B1 265 68X	
<b>WIRING INSTL-TV/DVD</b>		
SHEET:	ITEM/PART NO.:	REV
3 OF 5	000210690 / 33997101000	

8

7

6

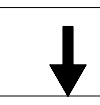
5

4

3

2

1



D

D

C

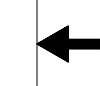
C

B

B

A

A



RIGHT SIDEWALL  
(REF)

ENTERTAINMENT CTR COMPL-TV  
000203260 / 338025-01-XXX

- 265 CODES/STANDARDS-CSA/CMVSS
- 1B1 CODES/STANDARDS USA

FOR ELECTRICAL  
TORQUE  
SPECIFICATIONS  
SEE DWG NO.  
128783-01-000

FOR  
ELECTRICAL  
CALLOUTS SEE  
DWG 000228177  
344479-01-000

DESCRIPTION:		1B1	265
<b>WIRING INSTL-TV/DVD</b>			
SHEET:	ITEM/PART NO.:	REV	
4 OF 5	000210690 / 33997101000		

8

7

6

5

4

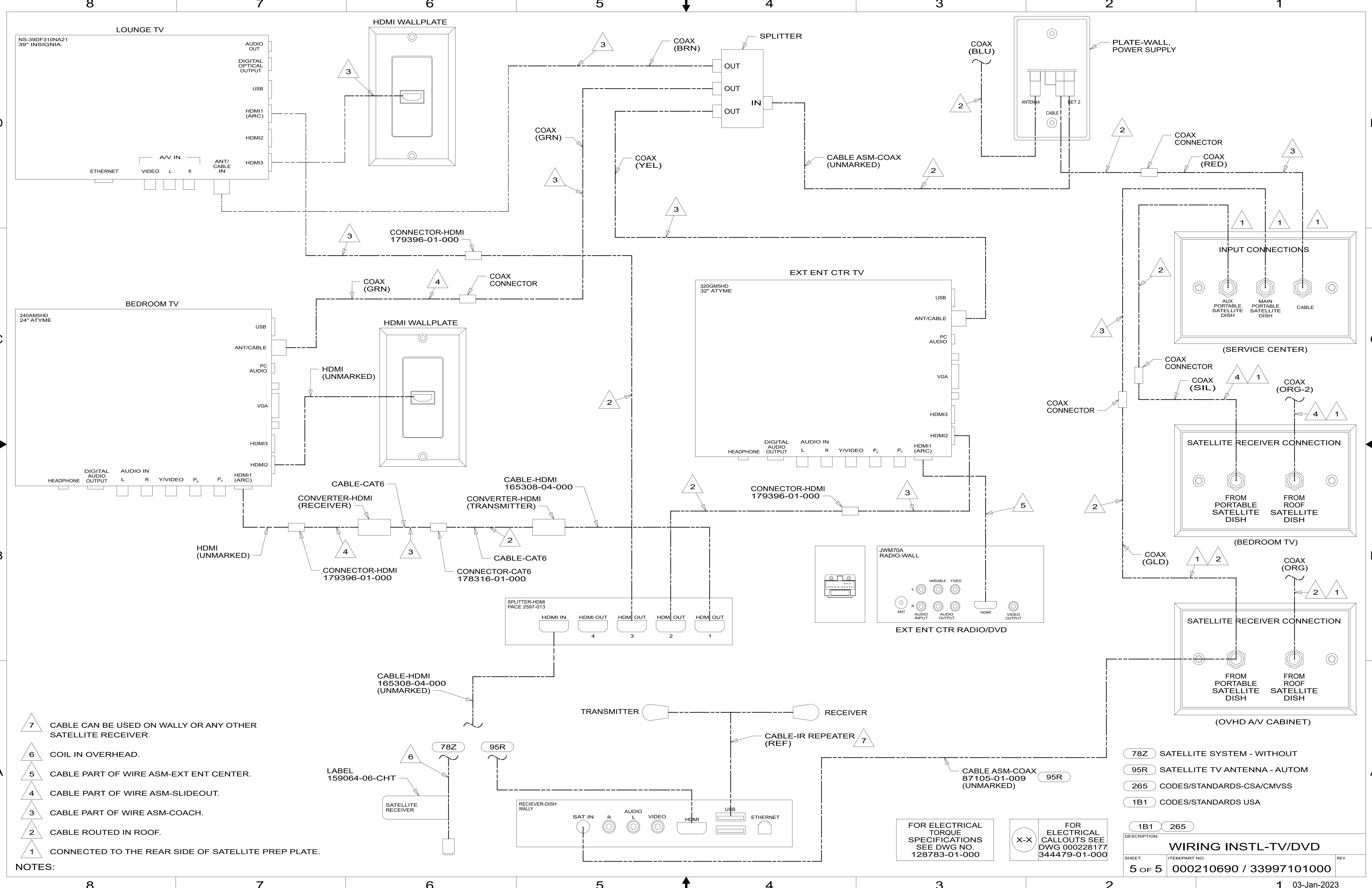
3

2

1

03-Jan-2023





- NOTES:
- 7 CABLE CAN BE USED ON WALLY OR ANY OTHER SATELLITE RECEIVER.
  - 6 COIL IN OVERHEAD.
  - 5 CABLE PART OF WIRE ASM-EXT ENT CENTER.
  - 4 CABLE PART OF WIRE ASM-SLIDEOUT.
  - 3 CABLE PART OF WIRE ASM-COACH.
  - 2 CABLE ROUTED IN ROOF.
  - 1 CONNECTED TO THE REAR SIDE OF SATELLITE PREP PLATE.

- 78Z SATELLITE SYSTEM - WITHOUT
- 95R SATELLITE TV ANTENNA - AUTOM
- 265 CODES/STANDARDS-CSA/CMVSS
- 1B1 CODES/STANDARDS USA

FOR ELECTRICAL TORQUE SPECIFICATIONS SEE DWG NO. 128783-01-000

FOR ELECTRICAL CALLOUTS SEE DWG 000228177 344479-01-000

DESCRIPTION: **WIRING INSTL-TV/DVD**

SHEET: 5 OF 5    ITEM/PART NO.: 000210690 / 33997101000    REV

03-Jan-2023